



The Right Connection™

Holedall Equipment and Products

Holedall Coupling Machines

Rams securely attach Holedall couplings to hose. Five machines meet every hose service requirement.

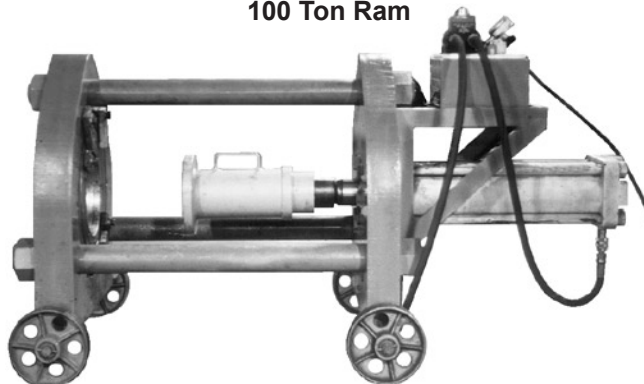
Rams, are powerful finely engineered machines designed specifically to swage and internally expand Holedall couplings by hydraulic pressure. Since each ram generates all the hydraulic pressure required to attach the Holedall coupling, one person can easily operate the equipment.

15 Ton Ram



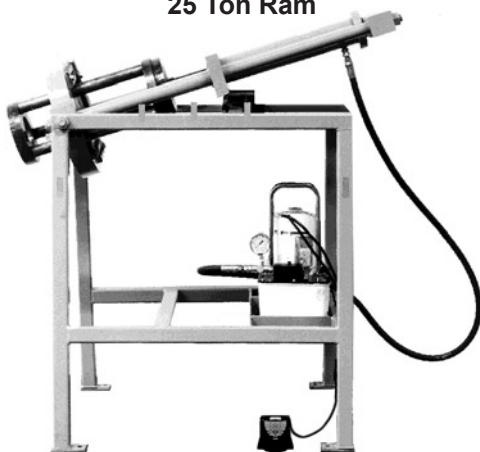
Specially designed ram for internally expanded couplings only. Bench mounted model (optional stand available), producing up to 10,000 PSI, for up to 15 tons of ram force. Capable of expanding 1" through 3" steel fittings and 3/4" through 4" brass Holedall Petroleum fittings. The motor is 1/2 h.p., 115 volt 60 cycle, single phase with foot pedal.

100 Ton Ram



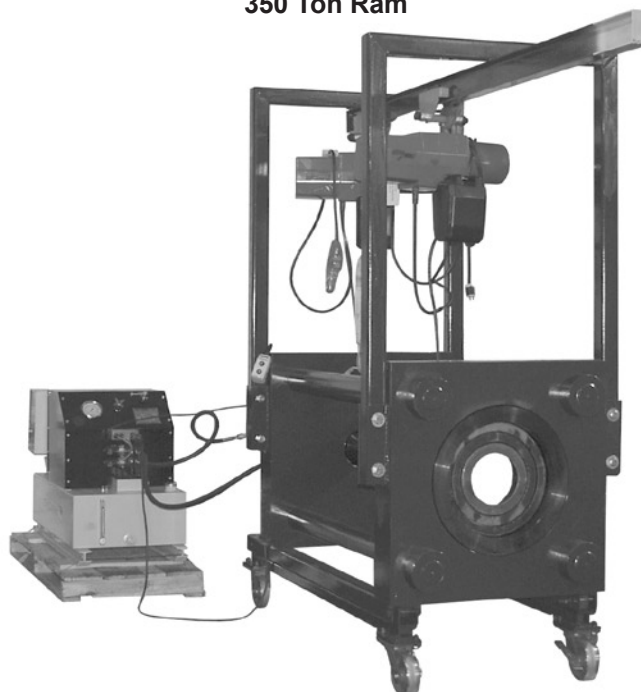
Used for swaging Holedall fittings to hose from 1 1/4" through 10" ID. With optional accessories, this ram may be used for internally expanded couplings on hose from 1 1/4" through 6". This machine is capable of producing up to 100 tons of ram force. A 1-1/8 h.p., 115 volt, 60 cycle, single phase motor is standard with remote, (220/440 volt motors are available).

25 Ton Ram



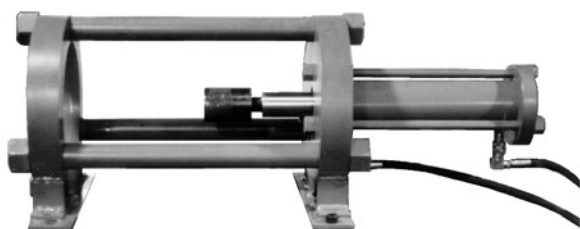
Free standing model producing up to 10,000 PSI of line pressure for up to 25 tons of ram force. Capable of external swaging 1/4" through 4" ID hose and internal expanding 5/8" through 4" ID hose, with proper equipment. The motor is 1/2 h.p., 115 volt 60 cycle, single phase with foot pedal. High speed pump kit option is available.

350 Ton Ram



Used for swaging Holedall and Rotary fittings. This ram is capable of producing up to 354 tons of ram force for swaging. A 14" 150 lb. flange will fit through the bed plate. This ram has 36" of stroke. A 12.5 h.p., 230 volt, 60Hz, 3 phase motor is standard with remote.

50 Ton Ram



Bench mounted model (optional stand available), producing up to 10,000 PSI, for up to 50 tons of ram force. Capable of external swaging 1 1/4" through 6" ID hose and internal expanding 5/8" through 6" ID hose, with proper equipment. A 1-1/8 h.p., 115 volt, 60 cycle, single phase motor is standard with remote, (220/440 volt motors are available).

All Rams require dies of the proper size to reduce the ferrule to the proper diameter for a good grip on the hose. Pushers of the proper size must be used on the end of the Ram to push the Holedall fitting through the die. Die and pusher selection depends on the sizes and types of hoses being coupled. Ferrule recommendations and a Die Chart binder are available upon request. Consult your Dixon representative for specific details.

Holedall Crimp Machine

CM400

Equipment

- Master die I.D. (standard): 145 mm
- Crimping force: 265 tons
- Maximum hose diameter: 4" I.D.
- Maximum die travel: 2.36"
- Maximum die opening without dies: 7.16"
 - Length: 29"
 - Width: 20"
 - Height: 32"
 - Weight: 579 lbs.
- Electrical power (standard): 230V 3Ph
- Optional:
 - Electrical power: 440V 3 Ph
 - Electrical power: 220V 1 Ph
 - Pump HP: 7.5 HP
- Manual / fully automatic crimping
- Inch / metric settings
- Approximate crimps per hour: 1415

Complete Crimp System Contains:

- 1 - Crimp 400 machine
- 1 - Digital control panel
- 1 - Mechanical stop
- 1 - Stand with foot pedal and die holder panel
- 11 - Small die sets from 1.02" - 3.07"
- 8 - Large die sets from 3.31" - 4.96"
- Note: large dies are not stored on the stand
- Quick change die tool



Recommended Working Pressures

Holedall couplings, regardless of coupling style, are never to be used for steam service at any pressure. Holedall fittings listed below are not to be used with cable reinforced high-pressure hose, 4 or 6 braid wire hydraulic hose or any other service not listed in recommendations. Consult factory for recommendations on usage.

Holedall couplings, to perform satisfactorily, must be applied properly in accordance with Dixon's assembly procedures, using correct die and ferrule for that particular hose end OD. Dixon's Die and Ferrule Recommendation Guide is to be used to select correct dies and ferrules. If you do not have the updated Die and Ferrule Recommendation Guide, consult the factory.

K Note: Hose service working pressure (including surges and spikes) is never to exceed the maximum recommended working pressure for the fitting (reference chart below)*. King safety cables are recommended. Media being transported through the hose should be compatible with the stem material and ferrule material. Consult Compatibility Chart on pages 548-553 or the factory for material compatibility. For applications other than the ones listed, please consult Dixon factory.

Holedall

Size	Externally Swaged *					Internally Expanded *		
	Standard Fittings	Long Style Fittings	Light Duty Fittings		Holedall II Fittings	Cam and Groove	Internally Expanded	Flow Chief / Crimp Sanitary Fittings
			NO Notched Fittings	NOS Notched Short Fittings				
	TM, TP, TG	TML, TPL, TGL	TM, TP, TG, RN***NO	RST***NOS, STC***NOS, GAS***NOS	FW		IXM, IXV, IXH	IXSE, IXFS, IXMS, CSSR
3/4"	---	---	---	---	---	---	---	---
1"	---	---	---	---	---	250	---	---
1-1/4"	600	1,000	350	---	---	---	800	---
1-3/8"	---	---	---	---	---	---	---	---
1-1/2"	600	1,000	350	250	300	250	800	250
2"	600	1,000	350	250	300	250	800	250
2-1/2"	600	1,000	250	---	250	150	600	250
3"	600	1,000	250	250	200	125	600 **	250
4"	500	850	250	***	200	100	500 **	200
5"	450	750	---	---	---	---	---	---
6"	400	700	---	---	---	---	400	---
8"	350	600	---	---	---	---	---	---
10"	300	550	---	---	---	---	---	---

- maximum recommended working pressures, in PSI, at **70°F** ambient temperature
- for applications other than the ones listed, please consult Dixon factory

* The assembly's (hose + coupling) maximum working pressure is the lesser of:

- 1) The hose rated working pressure, or
- 2) The coupling rated working pressure

** For hoses which use IXF48-3 to IXF48-5 and IXF64-2 to IXF64-5, consult the factory for working pressures. See notes below for specific recommendations.

Standard Fittings

Recommended for use on most one and two wire braid reinforced hoses, fiber braided and helical wire reinforced hose, such as: oil suction and discharge hose, barge and dock loading and unloading hose, L.P. gas hose (consult Dixon for NFPA56 compliant products), anhydrous ammonia hose, aircraft fueling hose and acid chemical hose.

Long Style Fittings

Recommended for use on hose as listed under standard fittings where additional retention is required due to higher working pressures or end pull. Consult maximum working pressure chart or call factory.

Holedall II Fittings

Recommended for Royalflex P1193 and P1196 hose or hoses with similar construction, having helical wire for a given O.D. range.

Light Duty Fittings

Recommended for use in the same applications as standard fittings above except that hose rated working pressure is never to exceed the maximum recommended working pressure listed in chart above.

Holedall External Swage Coupling System

The Holedall coupling system provides outstanding strength, durability and safety.

The Holedall system is a method of attaching couplings to hose utilizing a progressive swage. The patented Holedall couplings include a Holedall stem and a specially engineered ferrule. The hydraulic swaging of the coupling to the hose is accomplished by pushing the ferrule through a die which reduces the ferrule OD. The ferrule penetrates the hose wall, providing a 360° uninterrupted compression band around the hose.

A hydraulic ram is the only piece of machinery necessary to accomplish the coupling. Available in five different sizes - 15, 25, 50, 100 and 350 ton - these rams will accommodate dies and pushers of various sizes so that hoses up to 10" in diameter may be coupled.

This multi-purpose, high pressure coupling system requires no bolts and results in a clean coupling with no protrusions. The swaging operation is fast and hose of various lengths and different styles can be coupled. Ease of operation, flexibility and economy make the Holedall method an unequalled assembly system.

The Holedall coupling - the most adaptable coupling available.

For almost half a century, Holedall couplings have provided long-lasting efficiency and safety unmatched by any other industrial hose fitting.

K

Holedall

Couplings are available in stainless steel and carbon steel.

Couplings are furnished with pipe thread, plain end, victaulic grooved or flanged ends.

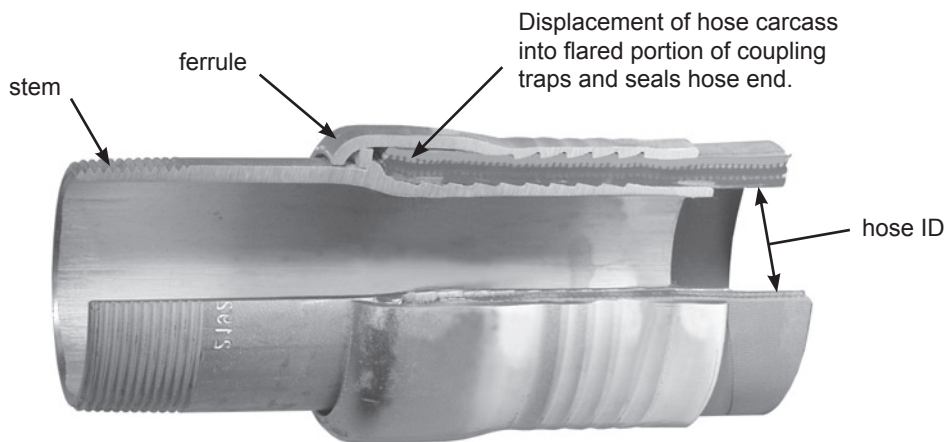
Dixon Holedall stems and ferrules are specifically designed to be used together as a coupling system.

SAFETY
ALERT

Due to differences in dimensions and tolerances, for safety reasons, do not use other manufacturer's stems or ferrules with Dixon Holedall products.

SAFETY
ALERT

Streamlined, lightweight coupling consisting of ferrule and stem.
No protrusions to snag on equipment.



Cross-section of holedall externally swaged assembly

Unless specified
consult the Dixon Swage/Crimp Recommendation Guide

External Swage Stems

- designed and machined for hydraulic suction line applications using SAE100R4 hydraulic hose
- Barbs provide easy assembly and maximum gripping action.
- for higher working pressure applications use long style stems and ferrules

Male Pipe Threaded (NPT) End



tubular type



investment cast design

Hose ID	Carbon Steel Part #	Long Style Carbon Steel Part #	Stainless Steel Part #
1¼"	TM20	TML20	TMR20
1½"	TM24	TML24	TMR24
2"	TM32	TML32	TMR32
2½"	TM40	TML40	TMR40
3"	TM48	TML48	TMR48
4"	TM64	TML64	TMR64
5"	TM80	TML80	---
6"	TM96	TML96	TMR96
8"	TM128	TML128	---
10"	TM160	TML160	---

Hose ID	Stainless Steel Part #
1½"	TMR24C
2"	TMR32C
3"	TMR48C

Beveled End for Welding



tubular type

Hose ID	Carbon Steel Part #	Long Style Carbon Steel Part #	Stainless Steel Part #
1¼"	TP20	TPL20	---
1½"	TP24	TPL24	---
2"	TP32	TPL32	TPR32
2½"	TP40	TPL40	---
3"	TP48	TPL48	TPR48
4"	TP64	TPL64	TPR64
5"	TP80	TPL80	---
6"	TP96	TPL96	---
8"	TP128	TPL128	---
10"	TP160	TPL160	---

Grooved End (Victaulic)



tubular type

Hose ID	Carbon Steel Part #	Long Style Carbon Steel Part #
1¼"	TG20	TGL20
1½"	TG24	TGL24
2"	TG32	TGL32
2½"	TG40	TGL40
3"	TG48	TGL48
4"	TG64	TGL64
5"	TG80	TGL80
6"	TG96	TGL96
8"	TG128	TGL128
10"	TG160	TGL160

Female End

stem & ferrule - two piece design
1" sizesstem & ferrule - one piece design
1¼" - 2" sizes

tubular type

Hose ID	Hose OD from to		Carbon Steel Part #
1"	1-30/64"	1-34/64"	TF16WF1-80
	1-34/64"	1-38/64"	TF16WF2-80
	1-35/64"	1-42/64"	TF16WF3-80
1¼"	1-44/64"	1-48/64"	TF20WF1-80 ¹
	1-49/64"	1-56/64"	TF20WF2-80 ¹
	1-57/64"	2"	TF20WF3-80 ¹
2"	2-36/64"	2-40/64"	TF32WF1-80 ¹
	2-41/64"	2-48/64"	TF32WF2-80 ¹
	2-49/64"	2-56/64"	TF32WF3-80 ¹

¹ Special pushers required for 1¼" and 2" sizes:

1¼" **25PUSH125-MOD**

2" **25PUSH200-MOD**

External Swage Ferrules

The selection of ferrules is very important to achieve the proper coupling-to-hose assembly.

- ferrules are plated carbon steel
- style F ferrules are used with all standard length male stems
- style FL ferrules are extra long and are used with all long style stems



K

Holedall

6-hole design

Hose ID	Hose OD		Plated Carbon Steel	Long Style Plated Carbon Stl.
	from	to	Part #	Part #
1¼"	1-44/64"	1-48/64"	F20-1	FL20-1
	1-49/64"	1-56/64"	F20-2	FL20-2
	1-57/64"	2"	F20-3	FL20-3
	2-1/64"	2-8/64"	F20-4	FL20-4
1½"	1-58/64"	2"	F24-1	FL24-1
	2-1/64"	2-8/64"	F24-2	FL24-2
	2-9/64"	2-16/64"	F24-3	FL24-3
	2-17/64"	2-24/64"	F24-4	FL24-4
	2-25/64"	2-32/64"	F24-5	FL24-5
2"	2-28/64"	2-40/64"	F32-1	FL32-1
	2-41/64"	2-48/64"	F32-2	FL32-2
	2-49/64"	2-56/64"	F32-3	FL32-3
	2-57/64"	3-2/64"	F32-4	FL32-4
2½"	2-62/64"	3-8/64"	F40-1	FL40-1
	3-9/64"	3-16/64"	F40-2	FL40-2
	3-17/64"	3-24/64"	F40-3	FL40-3
	3-25/64"	3-32/64"	F40-4	FL40-4
	3-33/64"	3-40/64"	F40-5	FL40-5
3"	3-30/64"	3-40/64"	F48-1	FL48-1
	3-41/64"	3-48/64"	F48-2	FL48-2
	3-49/64"	3-56/64"	F48-3	FL48-3
	3-57/64"	4"	F48-4	FL48-4
	4-1/64"	4-8/64"	F48-5	FL48-5
4"	4-30/64"	4-39/64"	F64-Z ¹	FL64-Z ²
	4-40/64"	4-44/64"	F64-1	FL64-1
	4-45/64"	4-52/64"	F64-2	FL64-2
	4-53/64"	4-60/64"	F64-3	FL64-3
	4-61/64"	5-4/64"	F64-4	FL64-4
	5-5/64"	5-12/64"	F64-5	FL64-5
	5-13/64"	5-20/64"	F64-6	FL64-6
	5-21/64"	5-28/64"	F64-7	FL64-7
5"	5-29/64"	5-36/64"	F64-8	FL64-8
	5-56/64"	5-60/64"	F80-1	FL80-1
	5-61/64"	6-4/64"	F80-2	FL80-2
	6-5/64"	6-12/64"	F80-3	FL80-3
	6-13/64"	6-20/64"	F80-4	FL80-4
	6-21/64"	6-28/64"	F80-5	FL80-5
	6-29/64"	6-38/64"	F80-6	FL80-6
	6-37/64"	6-44/64"	F80-7	FL80-7

2-hole design

Hose ID	Hose OD		Plated Carbon Steel	Long Style Plated Carbon Stl.
	from	to	Part #	Part #
6"	6-44/64"	6-63/64"	F96-Z	FL96-Z
	7"	7-4/64"	F96-1	FL96-1
	7-5/64"	7-12/64"	F96-2	FL96-2
	7-13/64"	7-20/64"	F96-3	FL96-3
	7-21/64"	7-28/64"	F96-4	FL96-4
	7-29/64"	7-36/64"	F96-5	FL96-5
	7-37/64"	7-44/64"	F96-6	FL96-6
	7-45/64"	7-52/64"	F96-7	FL96-7
	7-53/64"	7-60/64"	F96-8	FL96-8
8"	7-61/64"	8"	F96-9	FL96-9
	9"	9-9/64"	F128-Y	FL128-Y
	9-20/64"	9-24/64"	F128-1	FL128-1
	9-25/64"	9-32/64"	F128-2	FL128-2
	9-33/64"	9-40/64"	F128-3	FL128-3
	9-41/64"	9-48/64"	F128-4	FL128-4
	9-49/64"	9-56/64"	F128-5	FL128-5
	9-57/64"	10"	F128-6	FL128-6
	10-1/64"	10-4/64"	F128-7	FL128-7
10"	11-32/64"	11-44/64"	F160-1	FL160-1
	11-45/64"	11-60/64"	F160-2	FL160-2
	11-61/64"	12-12/64"	F160-3	FL160-3
	12-13/64"	12-28/64"	F160-4	FL160-4
	12-29/64"	12-44/64"	F160-5	FL160-5
	12-45/64"	12-60/64"	F160-6	FL160-6

For applications with hose OD ranges not listed, call the factory.

¹ requires special stem: **TM64-42**

² requires special stem: **TML64-42**

Holedall II External Swage Ferrules

For use with Royal-Flex™ thin wall hose. These specially designed carbon steel ferrules have serrations on the outside and should be used with stem styles TM, TP and TG stems on page 6.



Hose ID	Hose OD		Carbon Steel Part #
	from	to	
1½"	1-58/64"	2-2/64"	FW24
2"	2-28/64"	2-34/64"	FW32
3"	3-30/64"	3-38/64"	FW48
4"	4-30/64"	4-42/64"	FW64¹

¹ 4" takes special stem; **TM64-42**

Stainless External Swage Ferrules

Light duty 304 stainless ferrules for use with standard length stems such as the TMR series. Consult Dixon for die recommendations. Refer to the Dixon Pressure Slide Chart for specific pressure recommendations.



Hose ID	Hose OD		304 Stainless Steel Part #
	from	to	
1½"	1-60/64"	2-12/64"	GAS2334TO
	2-4/64"	2-22/64"	GAS2370TO
2"	2-30/64"	2-44/64"	GAS2709TO
	2-42/64"	2-54/64"	GAS2885TO
3"	3-30/64"	3-46/64"	GAS3760TO
	3-47/64"	3-54/64"	GAS3885TO
4"	4-40/64"	4-47/64"	GAS5010TO

External Swage Notched NOS Stems and Ferrules

- The largest advantage of the notched design is that the coupling can be removed from a damaged hose by cutting away the ferrule, without necessarily damaging the fitting. *After inspection of the fitting to determine its suitability for reuse, it can be reinstalled into another hose by using a new ferrule.*
- The notched system allows you to better manage your inventories. You can stock one stem and two ferrules, and cover the same hose range with less inventory. *You must purchase a stem and the matching ferrule to create an assembly.*
- For hose outside diameters of 2-4/64" and below, *the couplings are crimp only.*
- For hose outside diameters of 2-5/64" and above, the couplings can be crimped or swaged.
- See page 22 for cam and groove style notched NOS fittings.

SAFETY
ALERT

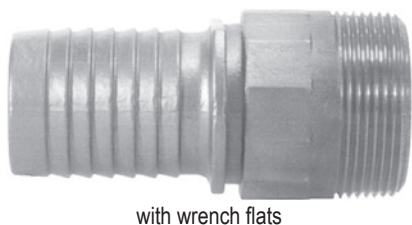
SAFETY
ALERT

Only use the NOS shank with the NOS ferrules.

SAFETY
ALERT

Due to differences in dimensions and tolerances for safety reasons, do not use other manufacturer's stems or ferrules with Dixon Holedall products.

SAFETY
ALERT



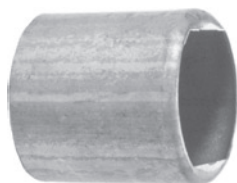
with wrench flats

male NPT stems

Hose ID	316 Stainless Steel Part #
1½"	RST150NOS
2"	RST200NOS
3"	RST300NOS
4"	RST400NOS

ferrules

Hose ID	Hose OD		304 Stainless Steel Part #
	from	to	
1½"	1-60/64"	2-12/64"	GAS2334NOS
	2-4/64"	2-22/64"	GAS2370NOS
2"	2-30/64"	2-44/64"	GAS2709NOS
	2-42/64"	2-54/64"	GAS2885NOS
3"	3-30/64"	3-46/64"	GAS3760NOS
	3-47/64"	3-54/64"	GAS3885NOS
4"	4-40/64"	4-47/64"	GAS5010NOS

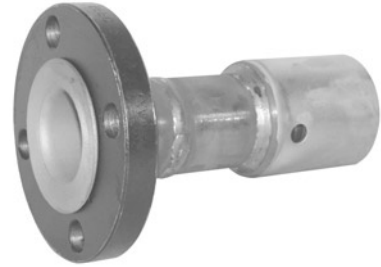


External Swage Flanged Assemblies

- 150# ASA flange drilling available with carbon steel stem, ferrule and flange, or 316 stainless steel stem, flange and carbon steel ferrule
- available in other sizes, consult the factory for pricing



fixed flange



floating flange

Hose ID	Hose OD		Carbon Steel	Stainless Steel	Carbon Steel	Stainless Steel
	from	to	Part #	Part #	Part #	Part #
2"	2-36/64"	2-40/64"	32P1SO15	R32P1SOR15	32P1LJ15	R32P1LJR15
	2-41/64"	2-48/64"	32P2SO15	R32P2SOR15	32P2LJ15	R32P2LJR15
	2-49/64"	2-56/64"	32P3SO15	R32P3SOR15	32P3LJ15	R32P3LJR15
3"	3-36/64"	3-40/64"	48P1SO15	R48P1SOR15	48P1LJ15	R48P1LJR15
	3-41/64"	3-48/64"	48P2SO15	R48P2SOR15	48P2LJ15	R48P2LJR15
	3-49/64"	3-56/64"	48P3SO15	R48P3SOR15	48P3LJ15	R48P3LJR15
4"	4-40/64"	4-44/64"	64P1SO15	R64P1SOR15	64P1LJ15	R64P1LJR15
	4-45/64"	4-52/64"	64P2SO15	R64P2SOR15	64P2LJ15	R64P2LJR15
	4-53/64"	4-60/64"	64P3SO15	R64P3SOR15	64P3LJ15	R64P3LJR15
6"	7"	7-4/64"	96P1SO15	R96P1SOR15	96P1LJ15	R96P1LJR15
	7-5/64"	7-12/64"	96P2SO15	R96P2SOR15	96P2LJ15	R96P2LJR15
	7-13/64"	7-20/64"	96P3SO15	R96P3SOR15	96P3LJ15	R96P3LJR15
8"	9-20/64"	9-24/64"	128P1SO15	---	128P1LJ15	---
	9-25/64"	9-32/64"	128P2SO15	---	128P2LJ15	---
	9-33/64"	9-40/64"	128P3SO15	---	128P3LJ15	---

External Swage Uni-Range Male Couplings

Designed for smaller hose systems, these couplings may be used for hose ID's of 1/4" - 1" and come complete with factory assembled stem and ferrule combination.

- can be swaged or crimped
- other hose OD's available, consult the factory
- stainless steel stems are investment cast



- plated carbon steel stem and ferrule

Hose ID	Hose OD		Plated Carbon Steel
	from	to	Part #
1/4"	34/64"	38/64"	4P1
	38/64"	42/64"	4P2
	42/64"	46/64"	4P3
3/8"	46/64"	50/64"	6P1
	50/64"	54/64"	6P2
	54/64"	58/64"	6P3
1/2"	54/64"	58/64"	8P1
	58/64"	62/64"	8P2
	62/64"	1-2/64"	8P3
3/4"	1-10/64"	1-14/64"	12P1
	1-14/64"	1-18/64"	12P2
	1-18/64"	1-22/64"	12P3
1"	1-30/64"	1-34/64"	16P1
	1-34/64"	1-38/64"	16P2
	1-38/64"	1-42/64"	16P3
	1-42/64"	1-46/64"	16P4

- 316 stainless steel stem, plated carbon steel ferrule

Hose ID	Hose OD		Stainless/Carbon Steel
	from	to	Part #
3/4"	1-10/64"	1-14/64"	R12P1
	1-14/64"	1-18/64"	R12P2
	1-18/64"	1-22/64"	R12P3
1"	1-30/64"	1-34/64"	R16P1
	1-34/64"	1-38/64"	R16P2
	1-38/64"	1-42/64"	R16P3
	1-42/64"	1-46/64"	R16P4

- 316 stainless steel stem, 304 stainless steel ferrule

Hose ID	Hose OD		Stainless Steel
	from	to	Part #
1/2"	58/64"	58/64"	R8P2SS
3/4"	1-6/64"	1-6/64"	R12P1250
	1-13/64"	1-13/64"	R12P1370
1"	1-30/64"	1-30/64"	R16P1620
	1-38/64"	1-38/64"	R16P1770

External Swage High Pressure Couplings

These couplings are for services requiring a fitting which will withstand extremely high pressures (up to **3,000 PSI**) and severe operating conditions, such as on small and medium size drilling rigs, used for slim hole, core drill, workover, seismograph, water well, blast or shot holes, etc. These long, rugged fittings are machined from seamless pipe and tubing with specially designed serrations. The mating ferrules are machined from heavy wall material incorporating matching serrations. These couplings are shipped with matching ferrules. Please provide hose OD when ordering for properly sized ferrule. Make sure both ends of the hose are measured for OD. Must be swaged with 50 Ton or 100 Ton Ram.

* An accurate hose OD must be provided to complete the part # and to ensure proper retention.

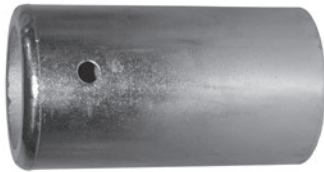
- The LM fittings are sold as a complete coupling, including stem and ferrule.
- API and NPT sizes are interchangeable

Stem and Ferrule Complete Assemblies

NPT Male Threaded Couplings



Hose ID	NPT Size	Zinc Plated Steel Part #
2"	2"	LM32-*
2½"	2½"	LM40-*
3"	3"	LM48-*



API Male Threaded Couplings

Hose ID	API Size	Zinc Plated Steel Part #
2"	2½"	LM3240-*
2½"	3"	LM4048-*
3"	4"	LM4864-*

Holedall Internal Expansion Couplings

The Dixon Internally Expanded Couplings are essential when maximum flow is important. Only one expansion tool is needed for each hose ID. Some recommended applications of these fittings are: concrete pump hose, plaster and grout hose, oil suction and discharge hose, multi-purpose heavy duty air hose, jetting hose, barge loading hose and bottom loading hose.

Benefits of Internal Expansion Fittings:

- maximum flow of media
- reduction of turbulence through hose
- excellent sealing and retention characteristics
- outperforms band clamps
- easy and consistent installation

End Configurations Available:

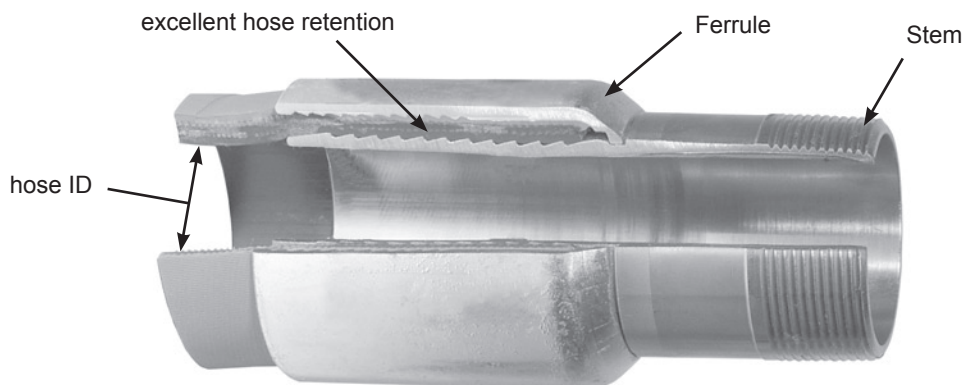
- male NPT
- raised California
- victaulic
- others available on request

Dixon Holedall stems and ferrules are specifically designed to be used together as a coupling system.

SAFETY
ALERT

Due to differences in dimensions and tolerances, for safety reasons, do not use other manufacturer's stems or ferrules with Dixon Holedall products.

SAFETY
ALERT



Cross-section of Holedall internally expanded assembly

Internal Expansion Stems



male pipe end

Size	Carbon Steel Part #
1"	IXM16
1¼"	IXM20
1½"	IXM24
2"	IXM32
2½"	IXM40
3"	IXM48
4"	IXM64
6"	IXM96



heavy duty raised end

Size	Carbon Steel Part #
1½"	IXH24
2"	IXH32
2½"	IXH40
3"	IXH48
4"	IXH64



grooved end

Size	Carbon Steel Part #
1¼"	IXV20
1½"	IXV24
2"	IXV32
2½"	IXV40
3"	IXV48
4"	IXV64

K

Holedall

Butt Weld x Heavy Duty Raised End (California Style)

Beveled design for welding to Schedule 40 pipe allows connection to a heavy duty raised end (California style) hose fitting or similar style end.

California style end

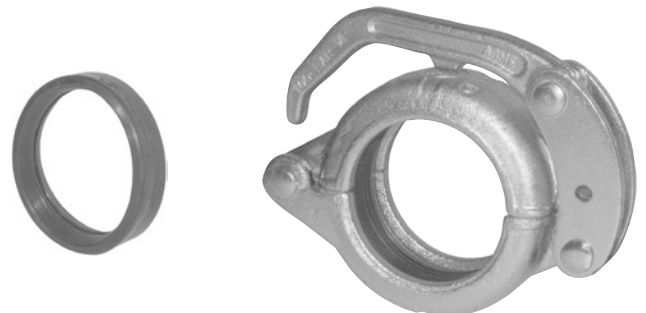
Size	Length	Carbon Steel Part #
1½"	1½"	HDE24
2"	1½"	HDE32
2½"	1½"	HDE40
3"	1½"	HDE48
4"	1½"	HDE64
5"	1½"	HDE80



Clamps for IXH Raised End (California Style) Stems

Drop-forged steel clamps for fast assembly when connecting heavy-duty raised end fittings used for concrete. These clamps can be used to connect the ends of pipes or hoses which use the Raised End or California style fittings listed above. Shipped with double lipped gasket and safety pin. 1½" through 3" are galvanized; 4" and 5" are painted green. Clamp should only be used with safety pin in place.

Hose ID	Forged Steel Clamps Part #	Buna-N Gaskets Part #
1½"	IXHC150	IXHCG150
2"	IXHC200	IXHCG200
2½"	IXHC250	IXHCG250
3"	IXHC300	IXHCG300
4"	IXHC400	IXHCG400
5"	IXHC500	IXHCG500



Internal Expansion Ferrules



K

Holedall

Hose ID	Hose OD from	Hose OD to	Ferrule Size	Plated Carbon Steel Part #
1"	1-24/64"	1-28/64"	1-7/16"	IXF16-1
	1-28/64"	1-32/64"	1-1/2"	IXF16-2
	1-32/64"	1-36/64"	1-9/16"	IXF16-3
1 1/4"	1-40/64"	1-44/64"	1-11/16"	IXF20-Z
	1-44/64"	1-48/64"	1-3/4"	IXF20-1
	1-48/64"	1-52/64"	1-13/16"	IXF20-2
	1-52/64"	1-56/64"	1-7/8"	IXF20-3
	1-56/64"	1-60/64"	1-15/16"	IXF20-4
	1-60/64"	2"	2"	IXF20-5
	2"	2-4/64"	2-1/16"	IXF20-6
1 1/2"	1-56/64"	1-60/64"	1-15/16"	IXF24-Z
	1-60/64"	2"	2"	IXF24-1
	2"	2-4/64"	2-1/16"	IXF24-2
	2-4/64"	2-8/64"	2-1/8"	IXF24-3
	2-8/64"	2-12/64"	2-3/16"	IXF24-4
	2-12/64"	2-16/64"	2-1/4"	IXF24-5
	2-16/64"	2-20/64"	2-5/16"	IXF24-6
2"	2-20/64"	2-24/64"	2-3/8"	IXF24-7
	2-32/64"	2-36/64"	2-9/16"	IXF32-Y
	2-36/64"	2-40/64"	2-5/8"	IXF32-Z
	2-40/64"	2-44/64"	2-11/16"	IXF32-1
	2-44/64"	2-48/64"	2-3/4"	IXF32-2
	2-48/64"	2-52/64"	2-13/16"	IXF32-3
	2-52/64"	2-56/64"	2-7/8"	IXF32-4
2 1/2"	2-56/64"	2-60/64"	2-15/16"	IXF32-5
	2-60/64"	3"	3"	IXF32-6
	3"	3-4/64"	3-1/16"	IXF32-7
	3"	3-4/64"	3-1/16"	IXF40-1
	3-4/64"	3-8/64"	3-1/8"	IXF40-2
	3-8/64"	3-12/64"	3-3/16"	IXF40-3
	3-12/64"	3-16/64"	3-1/4"	IXF40-4
2 1/2"	3-16/64"	3-20/64"	3-5/16"	IXF40-5
	3-20/64"	3-24/64"	3-3/8"	IXF40-6
	3-24/64"	3-28/64"	3-7/16"	IXF40-7
	3-28/64"	3-32/64"	3-1/2"	IXF40-8

Hose ID	Hose OD from	Hose OD to	Ferrule Size	Plated Carbon Steel Part #
3"	3-32/64"	3-36/64"	3-9/16"	IXF48-T
	3-36/64"	3-40/64"	3-5/8"	IXF48-U
	3-40/64"	3-44/64"	3-11/16"	IXF48-V
	3-44/64"	3-48/64"	3-3/4"	IXF48-W
	3-48/64"	3-52/64"	3-13/16"	IXF48-X
	3-52/64"	3-56/64"	3-7/8"	IXF48-Y
	3-56/64"	3-60/64"	3-15/16"	IXF48-Z
	3-60/64"	4"	4"	IXF48-1
	4"	4-4/64"	4-1/16"	IXF48-2
	4-4/64"	4-8/64"	4-1/8"	IXF48-3 ¹
4"	4-8/64"	4-12/64"	4-3/16"	IXF48-4 ¹
	4-12/64"	4-16/64"	4-1/4"	IXF48-5 ¹
	4-36/64"	4-40/64"	4-5/8"	IXF64-T
	4-40/64"	4-44/64"	4-11/16"	IXF64-U
	4-44/64"	4-48/64"	4-3/4"	IXF64-V
	4-48/64"	4-52/64"	4-13/16"	IXF64-W
	4-52/64"	4-56/64"	4-7/8"	IXF64-X
	4-56/64"	4-60/64"	4-15/16"	IXF64-Y
	4-60/64"	5"	5"	IXF64-Z
	5"	5-4/64"	5-1/16"	IXF64-1
6"	5-4/64"	5-8/64"	5-1/8"	IXF64-2 ¹
	5-8/64"	5-12/64"	5-3/16"	IXF64-3 ¹
	5-12/64"	5-16/64"	5-1/4"	IXF64-4 ¹
	5-16/64"	5-20/64"	5-5/16"	IXF64-5 ¹
	6-40/64"	6-44/64"	6-11/16"	IXF96-1
	6-44/64"	6-48/64"	6-3/4"	IXF96-2
	6-48/64"	6-52/64"	6-13/16"	IXF96-3
	6-52/64"	6-56/64"	6-7/8"	IXF96-4
	6-56/64"	6-60/64"	6-15/16"	IXF96-5
	6-60/64"	7"	7"	IXF96-6
6"	7"	7-4/64"	7-1/16"	IXF96-7
	7-4/64"	7-8/64"	7-1/8"	IXF96-8
	7-8/64"	7-12/64"	7-3/16"	IXF96-9
	7-12/64"	7-16/64"	7-1/4"	IXF96-10
	7-16/64"	7-20/64"	7-5/16"	IXF96-11
	7-20/64"	7-24/64"	7-11/32"	IXF96-12
	7-24/64"	7-28/64"	7-3/8"	IXF96-13
	7-28/64"	7-32/64"	7-7/8"	IXF96-14
	7-32/64"	7-36/64"	7-15/16"	IXF96-15
	7-36/64"	7-40/64"	7-1/2"	IXF96-16

¹ For hoses using ferrule sizes IXF48-3 thru IXF48-5 and IXF64-2 thru IXF64-5, consult the factory for working pressures.

Internally Expanded Permanent Couplings - Scovill Style



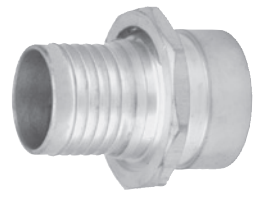
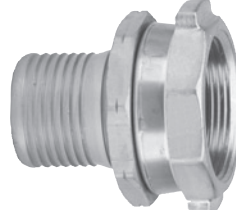
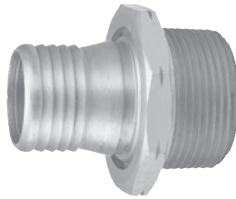
Do not interchange with other manufacturer's fittings.



Brass internally expanded permanent coupling are recommended for discharge and suction service. Commonly used in the transfer of fuel in industry to homes, airplanes, ships, etc. The working pressure of the 520-H fitting varies with the size of the fitting, the size and construction of the hose and the media being conveyed. Consult the factory for recommendations. Dixon Holedall stems and ferrules are specifically designed to be used together as a coupling system.

Both the male and female have octagonal facets for tightening with a wrench. The female in 1½" and larger sizes has special lugs for tightening. The stem is expanded to nominal ID of hose for a rigid, uniform, full-flow area.

- Male and female stems are machined from bar stock or solid brass forgings; ferrules are available in brass and stainless steel.
- Couplings are compact, light and streamlined to eliminate catching on curbs and shrubs.
- The H520 fittings are designed for internal expansion only.
- Couplings are pre-lubricated for assembly.
- Hand and electrically operated installation equipment is available. Consult factory for pricing and availability.



	male NPT	male NST	female NPSH	female NST	victaulic groove
Hose ID	Brass Part #	Brass Part #	Brass Part #	Brass Part #	Brass Part #
3/4"	H5192	---	H5191-BU	---	---
1"	H5212-A	H5212NST	H5211-A-BU	H5211NST	G5212
1-1/4"	H5222-A	---	H5221-A-BU	---	---
1-3/8"	H5272 ¹	---	H5271-BU ¹	---	---
1-1/2"	H5232-A	H5232NST ²	H5231-A-BU	H5231NST ²	G5232
2"	H5242	---	H5241-BU	---	G5242
2-1/2"	H5252	---	H5251 ³	---	---
3"	H5262	---	H5261 ³	---	---

¹ 1-3/8" stem has 1½" thread

² 1½" NST requires special adapter, part # H5231NSTADT

³ 2½" and 3" female parts have NPSM thread

Note: The fittings on this page are intended for fuel delivery service. See page 12 for information on API 1529 certification.

520-H Ferrules

A wide range of 520-H ferrules permits a perfect assembly of a coupling to a corresponding size of hose within commercial tolerances regardless of wall thickness. Eliminates need for large stock of coupling bodies. Consult Dixon for other hose OD's.

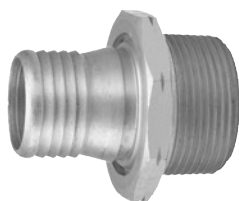


Hose ID	Hose OD from	Hose OD to	Brass Part #	Hose ID	Hose OD from	Hose OD to	Brass Part #	Hose ID	Hose OD from	Hose OD to	Brass Part #
¾"	1-8/64"	1-11/64"	R75AAS	1-3/8"	1-47/64"	1-50/64"	R1375BS	2"	2-27/64"	2-30/64"	R2AAS
	1-12/64"	1-14/64"	R75AS		1-51/64"	1-54/64"	R1375CS		2-31/64"	2-34/64"	R2AS
	1-15/64"	1-17/64"	R75BS		1-55/64"	1-58/64"	R1375DS		2-35/64"	2-38/64"	R2BS
	1-18/64"	1-20/64"	R75CS		1-59/64"	1-62/64"	R1375ES		2-39/64"	2-42/64"	R2CS
	1-24/64"	1-26/64"	R1AAAS-A		1-54/64"	1-57/64"	R15AAAS-A		2-43/64"	2-46/64"	R2DS
1"	1-27/64"	1-29/64"	R1AAS-A	1½"	1-58/64"	1-62/64"	R15AAS-A	2½"	2-47/64"	2-50/64"	R2ES
	1-30/64"	1-32/64"	R1AS-A		1-63/64"	2-2/64"	R15AS-A		2-51/64"	2-54/64"	R2FS
	1-33/64"	1-35/64"	R1BS-A		2-3/64"	2-6/64"	R15BS-A		2-62/64"	3-1/64"	R25AS
	1-36/64"	1-38/64"	R1CS-A		2-7/64"	2-11/64"	R15CS-A		3-2/64"	3-6/64"	R25BS
	1-39/64"	1-41/64"	R1DS-A		2-12/64"	2-14/64"	R15DS-A		3-7/64"	3-11/64"	R25CS
	1-42/64"	1-44/64"	R1ES-A		2-15/64"	2-19/64"	R15ES-A		3-12/64"	3-16/64"	R25DS
	1-39/64"	1-42/64"	R125AAS-A		2-20/64"	2-24/64"	R15FS		3-17/64"	3-21/64"	R25ES
1¼"	1-43/64"	1-46/64"	R125AS-A	2"	2-25/64"	2-28/64"	R15GS	3"	3-22/64"	3-26/64"	R25FS
	1-47/64"	1-50/64"	R125BS-A		3-30/64"	3-34/64"	R3AAAS		3-30/64"	3-34/64"	R3AAAS
	1-51/64"	1-54/64"	R125CS-A		3-35/64"	3-39/64"	R3AAS		3-35/64"	3-39/64"	R3AAS
	1-55/64"	1-58/64"	R125DS-A		3-40/64"	3-45/64"	R3AS		3-40/64"	3-45/64"	R3AS
	1-59/64"	1-62/64"	R125ES		3-46/64"	3-50/64"	R3BS		3-46/64"	3-50/64"	R3BS
									3-51/64"	3-54/64"	R3CS

¹ 1", 1¼" and 1½" ferrules will be replaced by API ferrules on page 14 as inventory is depleted.

API Certified Permanently Attached Petroleum Couplings

The following fittings have been tested and are compliant with API 1529 6th edition. Coupling procedures, ferrule recommendations and API test data are available upon request, please contact the factory.



520-H series male thread



520-H series female thread

Hose Size	Thread Type	Brass Part #	Aluminum Part #
1"	NPT	H5212-A	---
1¼"	NPT	H5222-A	---
1½"	NPT	H5232-A	---
2"	NPT	H5242L-A	A5242L-A ¹
2½"	NPT	H5252L-A	A5252L-A ¹
3"	NPT	H5262L-A	A5262L-A ¹
4"	NPT	H5282L-A	---

Hose Size	Thread Type	Brass Part #
1"	NPSH	H5211-A-BU
1¼"	NPSH	H5221-A-BU
1½"	NPSH	H5231-A-BU
2"	NPSH	H5241L-A-BU
2½"	NPSM	H5251L-A-BU
3"	NPSM	H5261L-A-BU
4"	NPSM	H5281L-A-BU

¹ requires a special thrust plate

2" **25000HTL24**

2½" **25000HTL25**

3" **25000HTL26**

API 520-H Series Ferrules



Hose ID	Hose OD from to		Brass Part #
1"	1-24/64"	1-26/64"	R1AAAS-A
	1-27/64"	1-29/64"	R1AAS-A
	1-30/64"	1-32/64"	R1AS-A
	1-33/64"	1-35/64"	R1BS-A
	1-36/64"	1-38/64"	R1CS-A
	1-39/64"	1-41/64"	R1DS-A
	1-42/64"	1-44/64"	R1ES-A
1¼"	1-39/64"	1-42/64"	R125AAS-A
	1-43/64"	1-46/64"	R125AS-A
	1-47/64"	1-50/64"	R125BS-A
	1-51/64"	1-54/64"	R125CS-A
	1-55/64"	1-58/64"	R125DS-A
	1-59/64"	1-62/64"	R125ES-A
1½"	1-54/64"	1-57/64"	R15AAAS-A
	1-58/64"	1-62/64"	R15AAS-A
	1-63/64"	2-2/64"	R15AS-A
	2-3/64"	2-6/64"	R15BS-A
	2-7/64"	2-11/64"	R15CS-A
	2-12/64"	2-14/64"	R15DS-A
	2-15/64"	2-19/64"	R15ES-A

Hose ID	Hose OD from to		304 Stainless Steel Part #	Aluminum Part #
2"	2-31/64"	2-34/64"	R2ASS-A	R2AAL-A
	2-35/64"	2-38/64"	R2BSS-A	R2BAL-A
	2-39/64"	2-42/64"	R2CSS-A	R2CAL-A
	2-43/64"	2-46/64"	R2DSS-A	R2DAL-A
	2-47/64"	2-50/64"	R2ESS-A	R2EAL-A
	2-62/64"	3-1/64"	R25ASS-A	R25AAL-A
2½"	3-2/64"	3-6/64"	R25BSS-A	R25BAL-A
	3-7/64"	3-11/64"	R25CSS-A	R25CAL-A
	3-12/64"	3-16/64"	R25DSS-A	R25DAL-A
	3-17/64"	3-21/64"	R25ESS-A	R25EAL-A
3"	3-35/64"	3-39/64"	R3AASS-A	R3AAAL-A
	3-40/64"	3-45/64"	R3ASS-A	R3AAL-A
	3-46/64"	3-50/64"	R3BSS-A	R3BAL-A
	3-51/64"	3-54/64"	R3CSS-A	R3CAL-A
	3-55/64"	3-59/64"	R3DSS-A	R3DAL-A
4"	4-46/64"	4-48/64"	R4ESS-A	---
	4-49/64"	4-51/64"	R4FSS-A	---
	4-52/64"	4-54/64"	R4GSS-A	---
	4-55/64"	4-57/64"	R4HSS-A	---
	4-58/64"	4-59/64"	R4KSS-A	---
	4-60/64"	4-62/64"	R4LSS-A	---
	4-63/64"	5"	R4MSS-A	---

CIP Internal Expansion (IX) Sanitary Style Hose Couplings

- **Clean-In-Place (CIP)** compliant
- Flow Chief internal expansion (IX) fittings are only to be used with Flow Chief stainless steel ferrules.
- Flow Chief Sanitary fittings are used in the food, dairy and beverage industries.

Sanitary Clamp End Stems

- see the current Dixon Price List for sanitary style gaskets
- see the current Dixon Price List for sanitary style clamps
- special plug is required to expand CIP compliant fittings
- special adapter plate is required to expand 1½" CIP compliant fittings
- 3A compliant when assembled by 3A authorized hose shop

Size	304 Stainless Steel Part #
1½"	IXSE24-3A
2"	IXSE32-3A
3"	IXSE48-3A



K

Holedall

Tube Weld End Stem

- special plug is required to expand CIP compliant fittings

Size	304 Stainless Steel Part #
2"	IXPE32-3A



Special Expansion Plug for CIP Compliant IX Fittings

Hose Size	Part #
1½"	IXFDPLG137
2"	IXFDPLG187
3"	IXFDPLG287



Flow Chief Ferrules

- the ferrule ID's are designed in increments of 1/16"

Hose ID	Hose OD from	Hose OD to	304 stainless steel Part #
1½" ¹	1-56/64"	1-59/64"	24PFX1.937
	1-60/64"	1-63/64"	24PFX2.000
	2"	2-3/64"	24PFX2.062
	2-4/64"	2-7/64"	24PFX2.125
	2-8/64"	2-11/64"	24PFX2.187
	2-12/64"	2-15/64"	24PFX2.250
2" ¹	2-16/64"	2-19/64"	24PFX2.312 ²
	2-28/64"	2-31/64"	32PFX2.500
	2-32/64"	2-35/64"	32PFX2.562
	2-36/64"	2-39/64"	32PFX2.625
	2-40/64"	2-43/64"	32PFX2.687
	2-44/64"	2-47/64"	32PFX2.750
	2-48/64"	2-51/64"	32PFX2.812
	2-52/64"	2-55/64"	32PFX2.875
	2-56/64"	2-59/64"	32PFX2.937
	3"	3-3/64"	40PFX3.062
2½"	3-4/64"	3-7/64"	40PFX3.125
	3-8/64"	3-11/64"	40PFX3.187
	3-12/64"	3-15/64"	40PFX3.250
	3-16/64"	3-19/64"	40PFX3.312
	3-20/64"	3-23/64"	40PFX3.375
	3-28/64"	3-31/64"	40PFX3.500

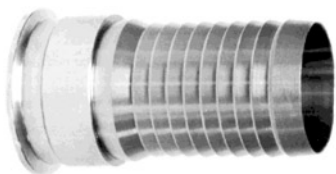


Hose ID	Hose OD from	Hose OD to	304 stainless steel Part #
3"	3-32/64"	3-35/64"	48PFX3.562
	3-36/64"	3-39/64"	48PFX3.625
	3-40/64"	3-43/64"	48PFX3.687
	3-44/64"	3-47/64"	48PFX3.750
	3-48/64"	3-51/64"	48PFX3.812
	3-52/64"	3-55/64"	48PFX3.875
	3-56/64"	3-59/64"	48PFX3.937
	3-60/64"	3-63/64"	48PFX4.000
	4"	4-3/64"	48PFX4.062
	4-4/64"	4-7/64"	48PFX4.125
4"	4-36/64"	4-39/64"	64PFX4.625
	4-40/64"	4-43/64"	64PFX4.687
	4-44/64"	4-47/64"	64PFX4.750
	4-48/64"	4-51/64"	64PFX4.812
	4-52/64"	4-55/64"	64PFX4.875
	4-56/64"	4-59/64"	64PFX4.937

¹ 1½" and 2" ferrules are not serrated

² consult the factory for working pressure

Internal Expansion (IX) Sanitary Style Hose Couplings



- sanitary style end
- Flow Chief internal expansion (IX) fittings are only to be used with Flow Chief stainless steel ferrules, see page 15
- see the current Dixon Price List for sanitary style gaskets
- see the current Dixon Price List for sanitary style clamps

Size	304 Stainless Steel Part #
1½"	IXSE24
2"	IXSE32
2½"	IXSE40
3"	IXSE48
4"	IXSE64

Internal Expansion (IX) Male NPT Stems



- Flow Chief internal expansion (IX) fittings are only to be used with Flow Chief stainless steel ferrules, see page 15

Size	304 Stainless Steel Part #
1½"	IXMS24
2"	IXMS32
2½"	IXMS40
3"	IXMS48
4"	IXMS64

Internal Expansion (IX) Bevel Seat Hose Couplings

- Flow Chief internal expansion (IX) fittings are only to be used with Flow Chief stainless steel ferrules, see page 15
- see the current Dixon Price List for bevel seat gaskets

Female Shank



- only use with the IXAN nuts shown below

Size	304 Stainless Steel Part #
1½"	IXFS24
2"	IXFS32
2½"	IXFS40
3"	IXFS48
4"	IXFS64

Threaded Hex Nuts



series 13H (modified)	
Size	304 Stainless Steel Part #
1½"	IXAN24
2"	IXAN32
2½"	IXAN40
3"	IXAN48
4"	IXAN64

Dixon Sanitary Style Crimp Stems Sanitary End x Hose Shank

- sanitary style end
- Dixon sanitary crimp stems are only to be used with Dixon stainless steel crimp ferrules
- reference pages 18-19 for crimp recommendations

Size	316 Stainless Steel Part #
1"	CSSR100
1½"	CSSR150
2"	CSSR200
3"	CSSR300
4"	CSSR400



K

Holedall

Female Bevel Seat End x Hose Shank

Size	316 Stainless Steel Part #
1"	CBSR100 ¹
1½"	CBSR150 ¹
2"	CBSR200 ¹
3"	CBSR300 ²
4"	CBSR400 ¹

¹ only use with IXAN nut on page 14

² only use with IXAN300 nut



Female I-Line End x Hose Shank

Size	316 Stainless Steel Part #
1½"	CILR150
2"	CILR200
3"	CILR300
4"	CILR400



Tube Weld End x Hose Shank

Size	316 Stainless Steel Part #
1½"	CTER150
2"	CTER200
3"	CTER300
4"	CTER400



Dixon Sanitary Crimp Ferrules

- manufactured in AISI 304 stainless steel
- ferrules have a surface finish of 63 or better



Hose ID	Hose OD from	Hose OD to	304 stainless steel Part #
1"	1-26/64"	1-28/64"	F16G-1453
	1-29/64"	1-31/64"	F16G-1500
	1-32/64"	1-34/64"	F16G-1547
	1-35/64"	1-37/64"	F16G-1594
	1-38/64"	1-40/64"	F16G-1641
1½"	1-58/64"	1-61/64"	F24G-1969
	1-62/64"	2-1/64"	F24G-2031
	2-2/64"	2-5/64"	F24G-2094
	2-6/64"	2-9/64"	F24G-2156
2"	2-30/64"	2-33/64"	F32G-2531
	2-34/64"	2-37/64"	F32G-2594
	2-38/64"	2-41/64"	F32G-2656
	2-42/64"	2-45/64"	F32G-2719

Hose ID	Hose OD from	Hose OD to	304 stainless steel Part #
3"	3-39/64"	3-42/64"	F48G-3625
	3-40/64"	3-43/64"	F48G-3688
	3-44/64"	3-47/64"	F48G-3750
	3-48/64"	3-51/64"	F48G-3813
	3-52/64"	3-55/64"	F48G-3875
	3-56/64"	3-59/64"	F48G-3938
4"	4-40/64"	4-43/64"	F64G-4688
	4-44/64"	4-47/64"	F64G-4750
	4-48/64"	4-51/64"	F64G-4813
	4-52/64"	4-55/64"	F64G-4875
	4-56/64"	4-59/64"	F64G-4938

Crimped Sanitary Recommendation Guide

See page 17 for Crimp Sanitary products.

1", 1½" and 2" Crimped Sanitary Fittings

Hose ID	Stem Part #	Ferrule Part #	Hose OD		Crimp Diameter (±0.005)	% Reduction
			Fractional	Decimal		
1"	CSSR100 CBSR100	F16G-1453	1 26/64	1.406	1.565	23%
			1 27/64	1.422	1.577	23%
			1 28/64	1.438	1.589	23%
		F16G-1500	1 29/64	1.453	1.601	23%
			1 30/64	1.469	1.613	23%
			1 31/64	1.484	1.625	23%
		F16G-1547	1 32/64	1.500	1.637	23%
			1 33/64	1.516	1.649	23%
			1 34/64	1.531	1.661	23%
		F16G-1594	1 35/64	1.547	1.673	23%
			1 36/64	1.563	1.685	23%
			1 37/64	1.578	1.697	23%
		F16G-1641	1 38/64	1.594	1.709	23%
			1 39/64	1.609	1.721	23%
			1 40/64	1.625	1.733	23%
1½"	CSSR150 CBSR150 CILR150 CTER150	F24G-1969	1 58/64	1.906	2.063	23%
			1 59/64	1.922	2.075	23%
			1 60/64	1.938	2.087	23%
			1 61/64	1.953	2.099	23%
		F24G-2031	1 62/64	1.969	2.111	23%
			1 63/64	1.984	2.123	23%
			2	2.000	2.135	23%
			2 1/64	2.016	2.147	23%
		F24G-2094	2 2/64	2.031	2.159	23%
			2 3/64	2.047	2.171	23%
			2 4/64	2.063	2.183	23%
			2 5/64	2.078	2.195	23%
		F24G-2156	2 6/64	2.094	2.207	23%
			2 7/64	2.109	2.219	23%
			2 8/64	2.125	2.231	23%
			2 9/64	2.141	2.243	23%
2"	CSSR200 CBSR200 CILR200 CTER200	F32G-2531	2 30/64	2.469	2.611	23%
			2 31/64	2.484	2.623	23%
			2 32/64	2.500	2.635	23%
			2 33/64	2.516	2.647	23%
		F32G-2594	2 34/64	2.531	2.659	23%
			2 35/64	2.547	2.671	23%
			2 36/64	2.563	2.683	23%
			2 37/64	2.578	2.695	23%
		F32G-2656	2 38/64	2.594	2.707	23%
			2 39/64	2.609	2.719	23%
			2 40/64	2.625	2.731	23%
			2 41/64	2.641	2.743	23%
		F32G-2719	2 42/64	2.656	2.755	23%
			2 43/64	2.672	2.767	23%
			2 44/64	2.688	2.779	23%
			2 45/64	2.703	2.791	23%

Crimped Sanitary Recommendation Guide

See page 17 for Crimp Sanitary products.

3" and 4" Crimped Sanitary Fittings

Hose ID	Stem Part #	Ferrule Part #	Hose OD		Crimp Diameter (±0.005)	% Reduction
			Fractional	Decimal		
3"	CSSR300 CBSR300 CILR300 CTER300	F24G-1969	3 36/64	3.563	3.683	23%
			3 37/64	3.578	3.695	23%
			3 38/64	3.594	3.707	23%
			3 39/64	3.609	3.719	23%
			3 40/64	3.625	3.731	23%
		F48G-3688	3 41/64	3.641	3.743	23%
			3 42/64	3.656	3.755	23%
			3 43/64	3.672	3.767	23%
			3 44/64	3.688	3.779	23%
			3 45/64	3.703	3.791	23%
		F48G-3750	3 46/64	3.719	3.803	23%
			3 47/64	3.734	3.815	23%
			3 48/64	3.750	3.828	23%
			3 49/64	3.766	3.840	23%
			3 50/64	3.781	3.852	23%
		F48G-3813	3 51/64	3.797	3.864	23%
			3 52/64	3.813	3.876	23%
			3 53/64	3.828	3.888	23%
			3 54/64	3.844	3.900	23%
			3 55/64	3.859	3.912	23%
		F48G-3875	3 56/64	3.875	3.924	23%
			3 57/64	3.891	3.936	23%
			3 58/64	3.906	3.948	23%
			3 59/64	3.922	3.960	23%
			4 40/64	4.625	4.857	23%
4"	CSSR400 CBSR400 CILR400 CTER400	F64G-4688	4 41/64	4.641	4.869	23%
			4 42/64	4.656	4.881	23%
			4 43/64	4.672	4.893	23%
		F64G-4750	4 44/64	4.688	4.905	23%
			4 45/64	4.703	4.917	23%
			4 46/64	4.719	4.929	23%
			4 47/64	4.734	4.941	23%
		F64G-4813	4 48/64	4.750	4.954	23%
			4 49/64	4.766	4.966	23%
			4 50/64	4.781	4.978	23%
			4 51/64	4.797	4.990	23%
		F64G-4875	4 52/64	4.813	5.002	23%
			4 53/64	4.828	5.014	23%
			4 54/64	4.844	5.026	23%
			4 55/64	4.859	5.038	23%
		F64G-4938	4 56/64	4.875	5.050	23%
			4 57/64	4.891	5.062	23%
			4 58/64	4.906	5.074	23%
			4 59/64	4.922	5.086	23%

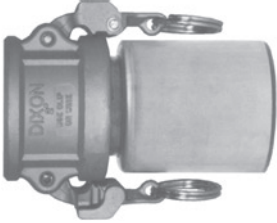
K

Holedall

Swaged Cam and Groove

- Developed specifically for chemical transport hoses having Crosslinked Polyethylene (XLPE) or Ultra High Molecular Weight Polyethylene (UHMW) tubes. Swaged Boss-Lock provides you with a permanently attached Cam and Groove fitting when superior coupling retention is required.
- In testing tank transport hoses from a wide variety of manufacturers, the swaged Boss-Lock fitting proved itself to be the clear winner in overall performance.
- Fittings are also available on special order for other sizes or hose OD's. Consult the factory for pricing and availability.
- Consult the factory for pricing and availability of the *special equipment required for installation* or refer to pages 2-3.

SAFETY
ALERT



coupler x hose shank with ferrule

EZ Boss-Lock type C Coupler with Ferrule

Size	Hose OD		316 Stainless Steel
	from	to	Part #
3/4"	1-6/64"	1-22/64"	RC075EZ-70
1"	1-29/64"	1-35/64"	RC100EZ-20
1"	1-36/64"	1-44/64"	RC100EZ-70

A



adapter x hose shank with ferrule

Boss-Lock type E Adapter with Ferrule

Size	Hose OD		316 Stainless Steel
	from	to	Part #
3/4"	1-6/64"	1-22/64"	RE075-1370
1"	1-29/64"	1-35/64"	RE100-1620
1"	1-36/64"	1-44/64"	RE100-1770

Cam &
Groove

Crimp Sleeves

- The hose OD ranges for the crimp sleeves are the same as for Dixon's standard cam and groove notched ferrules.
- The crimp sleeve is not designed to be used in applications where the assembly is exposed to high temperatures.
- Carbon steel is also available. Contact the factory for pricing and availability.



Size	Hose OD		304 Stainless Steel
	from	to	Part #
2"	2-30/64"	2-44/64"	GCS2709
3"	3-30/64"	3-46/64"	GCS3760

SAFETY
ALERT

Dixon stems and ferrules are specifically designed to be used together as a coupling system. Due to differences in dimensions and tolerances for safety reasons, do not use other manufacturer's stems or ferrules with Dixon Holedall products.

Notched Ferrules



Size	Hose OD		304 Stainless Steel
	from	to	Part #
1 1/2"	1-60/64"	2-12/64"	GAS2334NO
1 1/2"	2-4/64"	2-22/64"	GAS2370NO
2"	2-30/64"	2-44/64"	GAS2709NO
2"	2-42/64"	2-54/64"	GAS2885NO
3"	3-30/64"	3-46/64"	GAS3760NO
3"	3-47/64"	3-54/64"	GAS3885NO
4"	4-40/64"	4-47/64"	GAS5010NO

SAFETY
ALERT

Dixon stems and ferrules are specifically designed to be used together as a coupling system. Due to differences in dimensions and tolerances for safety reasons, do not use other manufacturer's stems or ferrules with Dixon Holedall products.

Notched Cam and Groove

- The largest advantage of the notched EZ Boss-Lock design is that the coupling can be removed from a damaged hose by cutting away the ferrule, without necessarily damaging the fitting. After inspection to of the fitting determine its suitability for reuse, it can be reinstalled into another hose by using a *new ferrule*.
- The notched EZ Boss-Lock system allows you to better manage your inventories. You can stock one coupling and two ferrules, and cover the same hose range with less inventory. *You must purchase a fitting and the matching ferrule to create an assembly.*

SAFETY
ALERT

Dixon stems and ferrules are specifically designed to be used together as a coupling system. Due to differences in dimensions and tolerances for safety reasons, do not use other manufacturer's stems or ferrules with Dixon Holedall products.

SAFETY
ALERT

Couplers

EZ Boss-Lock type C

Size	316 Stainless Steel Part #
1½"	RC150EZNO
2"	RC200EZNO
3"	RC300EZNO
4"	RC400EZNO

Boss-Lock type C

Size	316 Stainless Steel Part #
1½"	RC150BLNO
2"	RC200BLNO
3"	RC300BLNO
4"	RC400BLNO



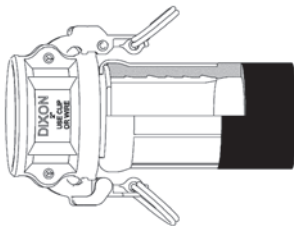
female coupler x
notched hose shank



female coupler x
notched hose shank

A

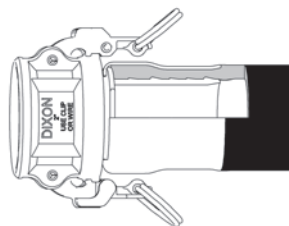
Cam & Groove



crimped assembly

SAFETY
ALERT

Contact the factory for swage
and crimp recommendations.



swaged assembly

Adapters

Boss-Lock type E

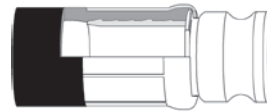
Size	316 Stainless Steel Part #
1½"	RE150NO
2"	RE200NO
3"	RE300NO
4"	RE400NO



swaged assembly

SAFETY
ALERT

Contact the factory for swage
and crimp recommendations.



crimped assembly



male adapter x
notched hose shank

Dixon Notched NOS Shank Cam and Groove

- For hose outside diameters of 2-4/64" and below, *the couplings are crimp only*.
- For hose outside diameters of 2-5/64" and above, the couplings can be crimped or swaged.
- See page 34 for male NPT notched NOS fittings.

SAFETY
ALERT

SAFETY
ALERT

Only use the NOS shank with the NOS ferrules.

Due to differences in dimensions and tolerances for safety reasons, do not use other manufacturer's stems or ferrules with Dixon Holedall products.

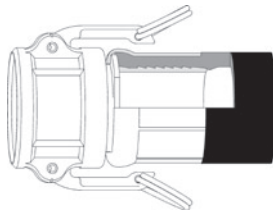
Couplers

Dixon type C

Size	316 Stainless Steel Part #
1½"	150CNOSSS
2"	200CNOSSS
3"	300CNOSSS



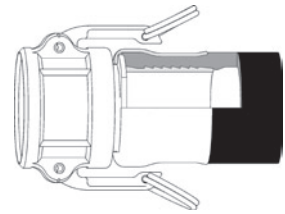
female coupler x
notched NOS hose shank



crimped assembly

SAFETY
ALERT

Contact the factory for swage
and crimp recommendations.



swaged assembly

Adapters

type E

Size	316 Stainless Steel Part #
1½"	150ENOSSS
2"	200ENOSSS
3"	300ENOSSS



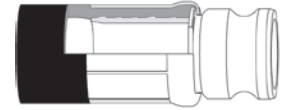
male adapter x
notched NOS hose shank



swaged assembly

SAFETY
ALERT

Contact the factory for swage
and crimp recommendations.



crimped assembly

Notched NOS Ferrules



Size	Hose OD		304 Stainless Steel Part #
	from	to	
1½"	1-60/64"	2-12/64"	GAS2334NOS
1½"	2-4/64"	2-22/64"	GAS2370NOS
2"	2-30/64"	2-44/64"	GAS2709NOS
2"	2-42/64"	2-54/64"	GAS2885NOS
3"	3-30/64"	3-46/64"	GAS3760NOS
3"	3-47/64"	3-54/64"	GAS3885NOS

Interlocking Style External Crimp Ferrules

Dixon's External Crimp Ferrules are designed for use with Dixon's Type C and E hose shanks. This design offers 360° interlocking with approved Dixon hose shanks and can be installed with any Dixon crimper system. For crimp specifications please refer to pages 24-26.

- designed to be used on aluminum Dixon grooved hose shanks (1½", 2", 3", 4")
- carbon steel for rugged applications
- 1½" – 2" features .063" wall thickness
- 3" – 4" features .125" wall thickness
- turnover edge is sliced for easy ferrule removal
- large offering of ID sizes to match your hose OD
- streamlined and safe final assembly
- *Do NOT interchange with other products.*

SAFETY
ALERT

Size	Hose OD		Carbon Steel Part #	Aluminum Adapter Part#	Aluminum Coupler Part#
	from	to			
1½"	1-49/64"	1-52/64"	CF150-1	150-E-AL	150-C-AL
	1-53/64"	1-56/64"	CF150-2		
	1-57/64"	1-60/64"	CF150-3		
	1-61/64"	2"	CF150-4		
	2-1/64"	2-4/64"	CF150-5		
	2-5/64"	2-8/64"	CF150-6		
	2-9/64"	2-12/64"	CF150-7		
	2-13/64"	2-16/64"	CF150-8		
	2-17/64"	2-20/64"	CF150-9		
	2-21/64"	2-24/64"	CF150-10		
2"	2-21/64"	2-24/64"	CF200-1	200-E-AL	200-C-AL
	2-25/64"	2-28/64"	CF200-2		
	2-29/64"	2-32/64"	CF200-3		
	2-33/64"	2-36/64"	CF200-4		
	2-37/64"	2-40/64"	CF200-5		
	2-41/64"	2-44/64"	CF200-6		
	2-45/64"	2-48/64"	CF200-7		
	2-49/64"	2-52/64"	CF200-8		
	2-53/64"	2-56/64"	CF200-9		
	2-57/64"	2-60/64"	CF200-10		
3"	3-23/64"	3-26/64"	CF300-1	300-E-AL	300-C-AL
	3-27/64"	3-30/64"	CF300-2		
	3-31/64"	3-34/64"	CF300-3		
	3-35/64"	3-38/64"	CF300-4		
	3-39/64"	3-42/64"	CF300-5		
	3-43/64"	3-46/64"	CF300-6		
	3-47/64"	3-50/64"	CF300-7		
	3-51/64"	3-54/64"	CF300-8		
	3-55/64"	3-58/64"	CF300-9		
	3-59/64"	3-62/64"	CF300-10		
4"	4-23/64"	4-26/64"	CF400-1	400-E-AL	400-C-AL
	4-27/64"	4-30/64"	CF400-2		
	4-31/64"	4-34/64"	CF400-3		
	4-35/64"	4-38/64"	CF400-4		
	4-39/64"	4-42/64"	CF400-5		
	4-43/64"	4-46/64"	CF400-6		
	4-47/64"	4-50/64"	CF400-7		
	4-51/64"	4-54/64"	CF400-8		
	4-55/64"	4-58/64"	CF400-9		
	4-59/64"	4-62/64"	CF400-10		



interlocking crimp ferrule

A

Cam &
Groove



type E Dixon cam & groove



type C Dixon cam & groove

Crimped Interlocking Cam & Groove Recommendation Guide

See page 23 for Interlocking Cam & Groove products.

1½" Interlocking Style Cam and Groove

Hose ID	Ferrule Part #	Hose OD		Crimp Diameter (±0.005)	% Reduction	Crimp Die #	Offset
		Fractional	Decimal				
1½"	CF150-1	1-49/64	1.766	1.845	20%	45	0.072
		1-50/64	1.781	1.857	20%	45	0.085
		1-51/64	1.797	1.870	20%	45	0.097
		1-52/64	1.813	1.882	20%	45	0.110
	CF150-2	1-53/64	1.828	1.895	20%	45	0.123
		1-54/64	1.844	1.907	20%	45	0.135
		1-55/64	1.859	1.920	20%	45	0.148
		1-56/64	1.875	1.932	20%	45	0.160
	CF150-3	1-57/64	1.891	1.945	20%	45	0.173
		1-58/64	1.906	1.957	20%	45	0.185
		1-59/64	1.922	1.970	20%	45	0.198
		1-60/64	1.938	1.982	20%	45	0.210
	CF150-4	1-61/64	1.953	1.995	20%	45	0.223
		1-62/64	1.969	2.007	20%	45	0.235
		1-63/64	1.984	2.020	20%	51	0.011
		2	2.000	2.032	20%	51	0.024
	CF150-5	2-1/64	2.016	2.045	20%	51	0.036
		2-2/64	2.031	2.057	20%	51	0.049
		2-3/64	2.047	2.070	20%	51	0.061
		2-4/64	2.063	2.082	20%	51	0.074
	CF150-6	2-5/64	2.078	2.095	20%	51	0.087
		2-6/64	2.094	2.107	20%	51	0.099
		2-7/64	2.109	2.120	20%	51	0.112
		2-8/64	2.125	2.132	20%	51	0.124
	CF150-7	2-9/64	2.141	2.145	20%	51	0.137
		2-10/64	2.156	2.157	20%	51	0.149
		2-11/64	2.172	2.170	20%	51	0.162
		2-12/64	2.188	2.182	20%	51	0.174
	CF150-8	2-13/64	2.203	2.195	20%	51	0.187
		2-14/64	2.219	2.207	20%	51	0.199
		2-15/64	2.234	2.220	20%	51	0.212
		2-16/64	2.250	2.232	20%	51	0.224
	CF150-9	2-17/64	2.266	2.245	20%	57	0.000
		2-18/64	2.281	2.257	20%	57	0.013
		2-19/64	2.297	2.270	20%	57	0.025
		2-20/64	2.313	2.282	20%	57	0.038
	CF150-10	2-21/64	2.328	2.295	20%	57	0.050
		2-22/64	2.344	2.307	20%	57	0.063
		2-23/64	2.359	2.320	20%	57	0.075
		2-24/64	2.375	2.332	20%	57	0.088

2" Interlocking Style Cam and Groove

Hose ID	Ferrule Part #	Hose OD		Crimp Diameter (±0.005)	% Reduction	Crimp Die #	Offset
		Fractional	Decimal				
2"	CF200-1	2-21/64	2.328	2.388	20%	57	0.144
		2-22/64	2.344	2.400	20%	57	0.156
		2-23/64	2.359	2.413	20%	57	0.169
		2-24/64	2.375	2.425	20%	57	0.181
	CF200-2	2-25/64	2.391	2.438	20%	57	0.194
		2-26/64	2.406	2.450	20%	57	0.206
		2-27/64	2.422	2.463	20%	57	0.219
		2-28/64	2.438	2.475	20%	57	0.231
	CF200-3	2-29/64	2.453	2.488	20%	63	0.007
		2-30/64	2.469	2.500	20%	63	0.020
		2-31/64	2.484	2.513	20%	63	0.033
		2-32/64	2.500	2.525	20%	63	0.045
	CF200-4	2-33/64	2.516	2.538	20%	63	0.058
		2-34/64	2.531	2.550	20%	63	0.070
		2-35/64	2.547	2.563	20%	63	0.083
		2-36/64	2.563	2.575	20%	63	0.095
	CF200-5	2-37/64	2.578	2.588	20%	63	0.108
		2-38/64	2.594	2.600	20%	63	0.120
		2-39/64	2.609	2.613	20%	63	0.133
		2-40/64	2.625	2.625	20%	63	0.145

Crimped Interlocking Cam & Groove Recommendation Guide

See page 23 for Interlocking Cam & Groove products.

2" Interlocking Style Cam and Groove

Hose ID	Ferrule Part #	Hose OD		Crimp Diameter (±0.005)	% Reduction	Crimp Die #	Offset
		Fractional	Decimal				
2"	CF200-6	2-41/64	2.641	2.638	20%	63	0.158
		2-42/64	2.656	2.650	20%	63	0.170
		2-43/64	2.672	2.663	20%	63	0.183
		2-44/64	2.688	2.675	20%	63	0.195
	CF200-7	2-45/64	2.703	2.688	20%	63	0.208
		2-46/64	2.719	2.700	20%	63	0.220
		2-47/64	2.734	2.713	20%	63	0.233
		2-48/64	2.750	2.725	20%	69	0.008
	CF200-8	2-49/64	2.766	2.738	20%	69	0.020
		2-50/64	2.781	2.750	20%	69	0.033
		2-51/64	2.797	2.763	20%	69	0.046
		2-52/64	2.813	2.775	20%	69	0.058
	CF200-9	2-53/64	2.828	2.788	20%	69	0.071
		2-54/64	2.844	2.800	20%	69	0.083
		2-55/64	2.859	2.813	20%	69	0.095
		2-56/64	2.875	2.825	20%	69	0.108
	CF200-10	2-57/64	2.891	2.838	20%	69	0.121
		2-58/64	2.906	2.850	20%	69	0.133
		2-59/64	2.922	2.863	20%	69	0.146
		2-60/64	2.938	2.875	20%	69	0.158

A

Cam &
Groove**3" Interlocking Style Cam and Groove**

Hose ID	Ferrule Part #	Hose OD		Crimp Diameter (±0.005)	% Reduction	Crimp Die #	Offset
		Fractional	Decimal				
3"	CF300-1	3-23/64	3.359	3.553	20%	90	0.010
		3-24/64	3.375	3.565	20%	90	0.022
		3-25/64	3.391	3.578	20%	90	0.035
		3-26/64	3.406	3.590	20%	90	0.047
	CF300-2	3-27/64	3.422	3.603	20%	90	0.059
		3-28/64	3.438	3.615	20%	90	0.072
		3-29/64	3.453	3.628	20%	90	0.084
		3-30/64	3.469	3.640	20%	90	0.097
	CF300-3	3-31/64	3.484	3.653	20%	90	0.110
		3-32/64	3.500	3.665	20%	90	0.122
		3-33/64	3.516	3.678	20%	90	0.135
		3-34/64	3.531	3.690	20%	90	0.147
	CF300-4	3-35/64	3.547	3.703	20%	90	0.160
		3-36/64	3.563	3.715	20%	90	0.172
		3-37/64	3.578	3.728	20%	90	0.185
		3-38/64	3.594	3.740	20%	90	0.197
	CF300-5	3-39/64	3.609	3.753	20%	90	0.210
		3-40/64	3.625	3.765	20%	90	0.222
		3-41/64	3.641	3.778	20%	90	0.235
		3-42/64	3.656	3.790	20%	96	0.010
	CF300-6	3-43/64	3.672	3.803	20%	96	0.023
		3-44/64	3.688	3.815	20%	96	0.035
		3-45/64	3.703	3.828	20%	96	0.048
		3-46/64	3.719	3.840	20%	96	0.060
	CF300-7	3-47/64	3.734	3.853	20%	96	0.073
		3-48/64	3.750	3.865	20%	96	0.085
		3-49/64	3.766	3.878	20%	96	0.098
		3-50/64	3.781	3.890	20%	96	0.110
	CF300-8	3-51/64	3.797	3.903	20%	96	0.123
		3-52/64	3.813	3.915	20%	96	0.135
		3-53/64	3.828	3.928	20%	96	0.148
		3-54/64	3.844	3.940	20%	96	0.160
	CF300-9	3-55/64	3.859	3.953	20%	96	0.173
		3-56/64	3.875	3.965	20%	96	0.185
		3-57/64	3.891	3.978	20%	96	0.198
		3-58/64	3.906	3.990	20%	96	0.210
	CF300-10	3-59/64	3.922	4.003	20%	96	0.223
		3-60/64	3.938	4.015	20%	96	0.235
		3-61/64	3.953	4.028	20%	102	0.011
		3-62/64	3.969	4.040	20%	102	0.024

Crimped Interlocking Cam & Groove Recommendation Guide

See page 23 for Interlocking Cam & Groove products.

4" Interlocking Style Cam and Groove

Hose ID	Ferrule Part #	Hose OD		Crimp Diameter (±0.005)	% Reduction	Crimp Die #	Offset
		<i>Fractional</i>	<i>Decimal</i>				
4"	CF400-1	4-23/64	4.359	4.553	20%	114	0.064
		4-24/64	4.375	4.565	20%	114	0.077
		4-25/64	4.391	4.578	20%	114	0.089
		4-26/64	4.406	4.590	20%	114	0.102
	CF400-2	4-27/64	4.422	4.603	20%	114	0.115
		4-28/64	4.438	4.615	20%	114	0.127
		4-29/64	4.453	4.628	20%	114	0.139
		4-30/64	4.469	4.640	20%	114	0.152
	CF400-3	4-31/64	4.484	4.653	20%	114	0.164
		4-32/64	4.500	4.665	20%	114	0.177
		4-33/64	4.516	4.678	20%	114	0.189
		4-34/64	4.531	4.690	20%	114	0.202
	CF400-4	4-35/64	4.547	4.703	20%	114	0.214
		4-36/64	4.563	4.715	20%	114	0.227
		4-37/64	4.578	4.728	20%	120	0.003
		4-38/64	4.594	4.740	20%	120	0.016
	CF400-5	4-39/64	4.609	4.753	20%	120	0.028
		4-40/64	4.625	4.765	20%	120	0.041
		4-41/64	4.641	4.778	20%	120	0.053
		4-42/64	4.656	4.790	20%	120	0.066
	CF400-6	4-43/64	4.672	4.803	20%	120	0.078
		4-44/64	4.688	4.815	20%	120	0.091
		4-45/64	4.703	4.828	20%	120	0.103
		4-46/64	4.719	4.840	20%	120	0.116
	CF400-7	4-47/64	4.734	4.853	20%	120	0.129
		4-48/64	4.750	4.865	20%	120	0.141
		4-49/64	4.766	4.878	20%	120	0.153
		4-50/64	4.781	4.890	20%	120	0.166
	CF400-8	4-51/64	4.797	4.903	20%	120	0.179
		4-52/64	4.813	4.915	20%	120	0.191
		4-53/64	4.828	4.928	20%	120	0.203
		4-54/64	4.844	4.940	20%	120	0.216
	CF400-9	4-55/64	4.859	4.953	20%	120	0.228
		4-56/64	4.875	4.965	20%	126	0.004
		4-57/64	4.891	4.978	20%	126	0.016
		4-58/64	4.906	4.990	20%	126	0.029
	CF400-10	4-59/64	4.922	5.003	20%	126	0.041
		4-60/64	4.938	5.015	20%	126	0.054
		4-61/64	4.953	5.028	20%	126	0.066
		4-62/64	4.969	5.040	20%	126	0.079

Note: The crimp die #'s and offset dimensions are for use with Dixon's Holedall Crimp System (CM400) **only**.

A

Cam &
Groove

Boss Holedall Fittings

Boss Holedall fittings are designed for air and liquid applications where a permanent, low profile clamping system is desired. Both fittings are supplied with carbon steel ferrules. Consult the factory for swage and/or crimp specifications. *Not for steam service.*

SAFETY
ALERT

Size	Hose OD		Iron	Stainless Steel
	From:	To:	Part #	Part #
¾"	1-10/64"	1-14/64"	GF26P1	---
	1-15/64"	1-18/64"	GF26P2	---
	1-19/64"	1-22/64"	GF26P3	---
1"	1-30/64"	1-34/64"	GF36P1	---
	1-35/64"	1-38/64"	GF36P2	---
	1-39/64"	1-42/64"	GF36P3	---
1½"	1-15/16"	2"	GF61P1	RGF61P1
	2-1/64"	2-1/8"	GF61P2	RGF61P2
	2-9/64"	2-1/4"	GF61P3	---
2"	2-9/16"	2-5/8"	GF81P1	RGF81P1
	2-41/64"	2-3/4"	GF81P2	RGF81P2
	2-49/64"	2-7/8"	GF81P3	---
3"	3-9/16"	3-5/8"	GF111P1	---
	3-41/64"	3-3/4"	GF111P2	---
	3-49/64"	3-7/8"	GF111P3	---



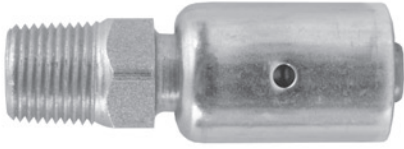
D

Boss

Unless specified
consult the Dixon Swage/Crimp Recommendation Guide

3500 Steel Nipples with Ferrules

Exclusive interlocking ferrule can be crimped or swaged to achieve maximum coupling sealing and retention. The 3500 steel nipples with ferrules have a low profile, streamline appearance.



- Zinc plated steel 3500 nipples with carbon steel ferrules can be crimped or swaged-on.
- rated to **600 PSI** working pressure
- *for air and water service only*

SAFETY
ALERT

Size	Hose OD		Steel Part #
	From:	To:	
1/2"	54/64"	58/64"	3512WF
3/4"	1-10/64"	1-14/64"	3514WF
1"	1-30/64"	1-34/64"	3518WF

The Importance of Whip Hose

SAFETY
ALERT

The constant vibration created by air tools, like air drills and pavement breakers, is destructive to air hose couplings, especially the quick-acting type. To provide protection against coupling breakage and related hazards, Dixon recommends the use of a whip hose. To construct a whip hose, connect one end of a short (3' to 10') air hose to the air tool using a 3500 type steel nipple. Connect the other end of the hose to the air supply using the standard quick-acting coupling. The heat-treated 3500 nipple will withstand vibration far better than the standard coupling and provide a safer connection. The whip hose should remain permanently connected to the tool.

Crimped 3500 Nipple Recommendation Guide

The crimp recommendation charts are only guides. It will not apply to every coupling situation. In some instances alternative dies and crimping dimensions must be employed to ensure safety. Experience has shown that variances in the construction of similar hoses and couplings may cause some assemblies to react differently when crimped. It is not uncommon to find hose with an outer diameter that fluctuates from one end to the other or from production lot to production lot. These inconsistencies coupled with the inherent differences between textile or wire braid, hard or soft wall, the presence or absence of an internal spiral wire and the differences in hose coverings make it difficult to establish hard and fast rules. Therefore, it's imperative that hose dimensions are accurately measured, assemblies are tested, and documentation is maintained.

Hose ID	Part #	Hose OD		Crimp Diameter (±0.005)	Crimp Length	% Reduction
		Fractional	Decimal			
1/2"	3512WF	54/64	0.844	0.906	1-1/4	21.1
		55/64	0.859	0.906	1-1/4	24.5
		56/64	0.875	0.938	1-1/4	19.3
		57/64	0.891	0.938	1-1/4	22.6
		58/64	0.906	0.969	1-1/4	17.8
3/4"	3514WF	1-10/64	1.156	1.218	1-7/16	17.8
		1-11/64	1.171	1.218	1-7/16	20.7
		1-12/64	1.187	1.218	1-7/16	23.6
		1-13/64	1.203	1.250	1-7/16	19.4
		1-14/64	1.218	1.250	1-7/16	22
1"	3518WF	1-30/64	1.468	1.500	1-15/16	23
		1-31/64	1.484	1.531	1-15/16	19
		1-32/64	1.500	1.531	1-15/16	21.6
		1-33/64	1.515	1.563	1-15/16	17.9
		1-34/64	1.531	1.563	1-15/16	20.3

Global Air King Universal Couplings Hose Ends

Size	<i>Investment Cast Steel</i> Part #
1/2"	GAM1
3/4"	GAM6
1"	GAM11



Air King Ferrules

Size	Ferrule ID	<i>Investment Cast Steel</i> Part #
1/2"	0.906	CCF0906
	1.120	CCF1120
	1.149	CCF1149
3/4"	1.190	CCF1190
	1.218	CCF1218
	1.246	CCF1246
	1.438	CCF1438
1"	1.469	CCF1469
	1.500	CCF1500
	1.531	CCF1531

Offers a low profile streamline appearance with maximum retention.

- lightweight
- can be crimped
- **ONLY** to be used with the global air king hose end, shown above

**SAFETY
ALERT**



**SAFETY
ALERT**

Air King is for air and water service only *Warning: Never use any Air King coupling for steam service!*
None of Dixon's catalog information is to be interpreted to mean that this type of coupling is suitable for use on steam hose.

Crimped Air King Recommendation Guide

1/2" Global Air King

Hose ID	Stem Part #	Ferrule Part #	Hose OD		Crimp Diameter (±0.005)	% Reduction
			<i>Fractional</i>	<i>Decimal</i>		
1/2"	GAM1	CCF0906	54/64	0.8438	0.840	15
		CCF0906	55/64	0.8594	0.853	15
		CCF0906	56/64	0.8750	0.867	15

3/4" Global Air King

Hose ID	Stem Part #	Ferrule Part #	Hose OD		Crimp Diameter (±0.005)	% Reduction
			<i>Fractional</i>	<i>Decimal</i>		
3/4"	GAM6	CCF1120	1-5/64	1.0781	1.082	20
		CCF1120	1-6/64	1.0938	1.094	20
		CCF1149	1-7/64	1.1094	1.107	20
		CCF1149	1-8/64	1.1250	1.119	20
		CCF1190	1-9/64	1.1406	1.122	20
		CCF1190	1-10/64	1.1563	1.134	20
		CCF1218	1-11/64	1.1719	1.147	20
		CCF1218	1-12/64	1.1875	1.159	20
		CCF1246	1-13/64	1.2031	1.182	20
		CCF1246	1-14/64	1.2188	1.194	20

1" Global Air King

Hose ID	Stem Part #	Ferrule Part #	Hose OD		Crimp Diameter (±0.005)	% Reduction
			<i>Fractional</i>	<i>Decimal</i>		
1"	GAM11	CCF1438	1-25/64	1.3906	1.388	20
		CCF1438	1-26/64	1.4063	1.400	20
		CCF1469	1-27/64	1.4219	1.413	20
		CCF1469	1-28/64	1.4375	1.425	20
		CCF1500	1-29/64	1.4531	1.438	20
		CCF1500	1-30/64	1.4688	1.450	20
		CCF1531	1-31/64	1.4844	1.463	20
		CCF1531	1-32/64	1.5000	1.475	20

Surelock Quick Acting Couplings with Ferrules

Universal design provides quick, easy and effective coupling of air hose. Exclusive interlocking ferrule can be crimped or swaged to achieve maximum coupling sealing and retention with a low profile streamline appearance.



- Dixon recommends that all hose assemblies be tested in accordance with RMA testing procedures.

- rated to **500 PSI** working pressure
- for air and water service only

SAFETY
ALERT

Head	Size	Hose OD		Iron Part #
		From:	To:	
small	1/2"	54/64"	1-2/64"	SL050CR
	3/4"	1-4/64"	1-22/64"	SL075CR
	1"	1-30/64"	1-46/64"	SL100CR
medium	1-1/2"	2-1/64"	2-8/64"	SL150CR
	2"	2-41/64"	2-48/64"	SL200CR

Crimped Surelock Recommendation Guide

The crimp recommendation charts are only guides. It will not apply to every coupling situation. In some instances alternative dies and crimping dimensions must be employed to ensure safety. Experience has shown that variances in the construction of similar hoses and couplings may cause some assemblies to react differently when crimped. It is not uncommon to find hose with an outer diameter that fluctuates from one end to the other or from production lot to production lot. These inconsistencies coupled with the inherent differences between textile or wire braid, hard or soft wall, the presence or absence of an internal spiral wire and the differences in hose coverings make it difficult to establish hard and fast rules. Therefore, its imperative that hose dimensions are accurately measured, assemblies are tested, and documentation is maintained.

Hose ID	Part #	Hose OD		Crimp Diameter (±0.005)	Crimp Length	% Reduction
		Fractional	Decimal			
1/2"	SL050CR	54/64	0.843	0.969	1-1/4	16.6
		55/64	0.859	0.969	1-1/4	20.2
		56/64	0.875	0.969	1-1/4	23.5
		57/64	0.890	1.000	1-1/4	18.6
		58/64	0.906	1.000	1-1/4	21.7
		59/64	0.921	1.031	1-1/4	17.2
		60/64	0.937	1.031	1-1/4	20.2
		61/64	0.953	1.032	1-1/4	23.0
		62/64	0.968	1.063	1-1/4	18.8
		63/64	0.984	1.063	1-1/4	21.5
		1	1.000	1.094	1-1/4	17.7
		1-1/64	1.015	1.094	1-1/4	20.2
		1-2/64	1.031	1.094	1-1/4	22.5
		1-4/64	1.062	1.156	1-1/4	18.8
		1-5/64	1.078	1.156	1-1/4	22.7
		1-6/64	1.093	1.188	1-1/4	17.1
3/4"	SL075CR	1-7/64	1.109	1.188	1-1/4	20.7
		1-8/64	1.125	1.188	1-1/4	24.0
		1-9/64	1.140	1.219	1-1/4	19.0
		1-10/64	1.156	1.219	1-1/4	22.2
		1-11/64	1.171	1.250	1-1/4	17.6
		1-12/64	1.187	1.250	1-1/4	20.6
		1-13/64	1.203	1.250	1-1/4	23.3
		1-14/64	1.218	1.281	1-1/4	19.2
		1-15/64	1.234	1.281	1-1/4	21.8
		1-16/64	1.250	1.313	1-1/4	18.0
		1-17/64	1.265	1.313	1-1/4	20.5
		1-18/64	1.281	1.313	1-1/4	22.8
		1-19/64	1.296	1.344	1-1/4	19.3
		1-20/64	1.312	1.344	1-1/4	21.6
		1-21/64	1.328	1.375	1-1/4	18.3
		1-22/64	1.343	1.375	1-1/4	20.4

Hose ID	Part #	Hose OD		Crimp Diameter (±0.005)	Crimp Length	% Reduction
		Fractional	Decimal			
1"	SL100CR	1-30/64	1.468	1.500	1-1/2	21.9
		1-31/64	1.484	1.531	1-1/2	18.0
		1-32/64	1.500	1.531	1-1/2	20.6
		1-33/64	1.515	1.531	1-1/2	23.0
		1-34/64	1.531	1.563	1-1/2	19.3
		1-35/64	1.546	1.563	1-1/2	21.7
		1-36/64	1.562	1.594	1-1/2	18.3
		1-37/64	1.578	1.594	1-1/2	20.5
		1-38/64	1.593	1.625	1-1/2	17.3
		1-39/64	1.609	1.625	1-1/2	19.4
		1-40/64	1.625	1.625	1-1/2	21.4
		1-41/64	1.640	1.656	1-1/2	18.5
		1-42/64	1.656	1.656	1-1/2	20.4
		1-43/64	1.671	1.688	1-1/2	17.6
		1-44/64	1.687	1.688	1-1/2	19.5
		1-45/64	1.703	1.688	1-1/2	21.3
1 1/2"	SL150CR	1-46/64	1.718	1.719	1-1/2	18.6
		2-1/64	2.015	2.094	2-7/8	19.9
		2-2/64	2.031	2.094	2-7/8	22.3
		2-3/64	2.046	2.125	2-7/8	18.8
		2-4/64	2.062	2.125	2-7/8	21.1
		2-5/64	2.078	2.125	2-7/8	23.2
		2-6/64	2.093	2.156	2-7/8	20.0
		2-7/64	2.109	2.156	2-7/8	22.0
2"	SL200CR	2-8/64	2.125	2.188	2-7/8	19.0
		2-41/64	2.640	2.718	3	20.1
		2-42/64	2.656	2.750	3	17.3
		2-43/64	2.671	2.750	3	19.2
		2-44/64	2.687	2.750	3	21.0
		2-45/64	2.703	2.781	3	18.3
		2-46/64	2.718	2.781	3	20.1
		2-47/64	2.734	2.813	3	17.6
		2-48/64	2.750	2.813	3	19.3

Air King with Ferrules

Universal design provides quick, easy and effective coupling of air hose. Exclusive interlocking ferrule can be crimped or swaged to achieve maximum coupling sealing and retention with a low profile streamline appearance.

- iron and stainless steel Air King with carbon steel ferrules can be crimped or swaged
- rated to **150 PSI** working pressure.
- for air and water service only

**SAFETY
ALERT**



Size	Hose OD		Iron	Stainless Steel
	From:	To:	Part #	Part #
1/2"	54/64"	1-2/64"	AM1WF	---
3/4"	1-4/64"	1-22/64"	AM6WF	RAM6WF
1"	1-18/64"	1-34/64"	AM11WF-1	---
1"	1-30/64"	1-46/64"	AM11WF	---

Crimped Air King Recommendation Guide

The crimp recommendation charts are only guides. It will not apply to every coupling situation. In some instances alternative dies and crimping dimensions must be employed to ensure safety. Experience has shown that variances in the construction of similar hoses and couplings may cause some assemblies to react differently when crimped. It is not uncommon to find hose with an outer diameter that fluctuates from one end to the other or from production lot to production lot. These inconsistencies coupled with the inherent differences between textile or wire braid, hard or soft wall, the presence or absence of an internal spiral wire and the differences in hose coverings make it difficult to establish hard and fast rules. Therefore, it's imperative that hose dimensions are accurately measured, assemblies are tested, and documentation is maintained.

Hose ID	Part #	Hose OD		Crimp Diameter (±0.005)	Crimp Length	% Reduction
		Fractional	Decimal			
1/2"	AM1WF	54/64	0.843	0.906	1-1/4	18.3
		55/64	0.859	0.937	1-1/4	13.2
		56/64	0.875	0.937	1-1/4	16.9
		57/64	0.890	0.968	1-1/4	12.1
		58/64	0.906	0.968	1-1/4	15.5
		59/64	0.921	1.000	1-1/4	11.1
		60/64	0.937	1.000	1-1/4	14.4
		61/64	0.953	1.000	1-1/4	17.2
		62/64	0.968	1.031	1-1/4	13.4
		63/64	0.984	1.031	1-1/4	16.1
		1	1.000	1.062	1-1/4	12.7
		1-1/64	1.015	1.062	1-1/4	15.3
		1-2/64	1.031	1.093	1-1/4	12.0
		1-4/64	1.062	1.156	1-1/4	13.4
		1-5/64	1.078	1.156	1-1/4	17.3
		1-6/64	1.093	1.187	1-1/4	11.9
		1-7/64	1.109	1.187	1-1/4	15.8
		1-8/64	1.125	1.218	1-1/4	11.2
3/4"	AM6WF RAM6WF	1-9/64	1.140	1.218	1-1/4	14.6
		1-10/64	1.156	1.218	1-1/4	17.5
		1-11/64	1.171	1.250	1-1/4	13.0
		1-12/64	1.187	1.250	1-1/4	16.2
		1-13/64	1.203	1.281	1-1/4	12.3
		1-14/64	1.218	1.281	1-1/4	15.1
		1-15/64	1.234	1.312	1-1/4	11.5
		1-16/64	1.250	1.312	1-1/4	14.4
		1-17/64	1.265	1.312	1-1/4	16.9
		1-18/64	1.281	1.343	1-1/4	13.5
		1-19/64	1.296	1.343	1-1/4	15.9
		1-20/64	1.312	1.375	1-1/4	12.6
		1-21/64	1.328	1.375	1-1/4	15.0
		1-22/64	1.343	1.406	1-1/4	12.1

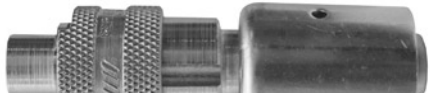
Hose ID	Part #	Hose OD		Crimp Diameter (±0.005)	Crimp Length	% Reduction
		Fractional	Decimal			
1"	AM11WF-1	1-18/64	1.281	1.375	1-1/2	16.7
		1-19/64	1.296	1.375	1-1/2	20.5
		1-20/64	1.312	1.406	1-1/2	15.0
		1-21/64	1.328	1.406	1-1/2	18.6
		1-22/64	1.343	1.437	1-1/2	13.7
		1-23/64	1.359	1.437	1-1/2	17.5
		1-24/64	1.375	1.468	1-1/2	12.8
		1-25/64	1.390	1.468	1-1/2	16.1
		1-26/64	1.406	1.500	1-1/2	11.5
		1-27/64	1.421	1.500	1-1/2	14.7
		1-28/64	1.437	1.500	1-1/2	17.6
		1-29/64	1.453	1.531	1-1/2	13.9
	AM11WF-1 AM11WF	1-30/64	1.468	1.531	1-1/2	16.8
		1-31/64	1.484	1.562	1-1/2	12.8
		1-32/64	1.500	1.562	1-1/2	15.4
		1-33/64	1.515	1.593	1-1/2	12.0
		1-34/64	1.531	1.593	1-1/2	14.7
	AM11WF	1-35/64	1.546	1.625	1-1/2	11.1
		1-36/64	1.562	1.625	1-1/2	13.7
		1-37/64	1.578	1.625	1-1/2	15.9
		1-38/64	1.593	1.656	1-1/2	12.9
		1-39/64	1.609	1.656	1-1/2	15.1
		1-40/64	1.625	1.687	1-1/2	12.4
		1-41/64	1.640	1.687	1-1/2	14.5
		1-42/64	1.656	1.718	1-1/2	11.8
		1-43/64	1.671	1.718	1-1/2	14.0
		1-44/64	1.687	1.750	1-1/2	11.3
		1-45/64	1.703	1.750	1-1/2	13.3
		1-46/64	1.718	1.750	1-1/2	15.1


E


Air

Dix-Lock Quick-Acting Couplings with Ferrules

- rated to **300 PSI** working pressure
- also available in stainless steel, contact the factory for further information
- for crimp recommendations see next page

Male Head	Body Size	Hose ID	Hose OD		Material	Part #
			From:	To:		
	1/2"	1/2"	27/32"	1-1/32"	plated steel	QM3WF
	1/2"	3/4"	1-5/32"	1-11/32"	plated steel	QM4WF
	1/2"	1/2"	27/32"	1-1/32"	brass	QB3WF
	1/2"	3/4"	1-5/32"	1-11/32"	brass	QB4WF

Female Head	Body Size	Hose ID	Hose OD		Material	Part #
			From:	To:		
	1/2"	1/2"	27/32"	1-1/32"	plated steel	QM22WF
	1/2"	3/4"	1-5/32"	1-11/32"	plated steel	QM23WF
	1/2"	1/2"	27/32"	1-1/32"	brass	QB22WF
	1/2"	3/4"	1-5/32"	1-11/32"	brass	QB23WF

Male Locking Head	Body Size	Hose ID	Hose OD		Material	Part #
			From:	To:		
	1/2"	1/2"	27/32"	1-1/32"	plated steel	QM33WF
	1/2"	3/4"	1-5/32"	1-11/32"	plated steel	QM44WF
	1/2"	1/2"	27/32"	1-1/32"	brass	QB33WF
	1/2"	3/4"	1-5/32"	1-11/32"	brass	QB44WF

Dual Lock Quick-Acting Couplings with Ferrule

- Dual Lock couplings with ferrules are rated to **300 PSI** working pressure.
- also available in brass and stainless steel
- yellow zinc coated coupling with plated steel ferrule
- for crimp recommendations see next page



Body Size	Hose ID	Hose OD		Part #
		From:	To:	
1/2"	1/2"	54/64"	1-2/64"	PHL8WF
1/2"	3/4"	1-10/64"	1-22/64"	PHL12WF

Crimped Dix-Lock and Dual-Lock Recommendation Guide

The crimp recommendation charts are only guides. It will not apply to every coupling situation. In some instances alternative dies and crimping dimensions must be employed to ensure safety. Experience has shown that variances in the construction of similar hoses and couplings may cause some assemblies to react differently when crimped. It is not uncommon to find hose with an outer diameter that fluctuates from one end to the other or from production lot to production lot. These inconsistencies coupled with the inherent differences between textile or wire braid, hard or soft wall, the presence or absence of an internal spiral wire and the differences in hose coverings make it difficult to establish hard and fast rules. Therefore, it is imperative that hose dimensions are accurately measured, assemblies are tested, and documentation is maintained.

Hose ID	Part #	Hose OD		Crimp Diameter (±0.005)	Crimp Length		% Reduction
		<i>Fractional</i>	<i>Decimal</i>		<i>QM/QB</i>	<i>PHL</i>	
1/2"	QM3WF	54/64	0.844	0.925	1-1/8	1-1/4	18.9
	QB3WF	55/64	0.859	0.940	1-1/8	1-1/4	18.1
	QM22WF	56/64	0.875	0.950	1-1/8	1-1/4	18.9
	QB22WF	57/64	0.891	0.965	1-1/8	1-1/4	18.4
	QM33WF	58/64	0.906	0.975	1-1/8	1-1/4	19.0
	QB33WF	59/64	0.922	0.990	1-1/8	1-1/4	18.5
		60/64	0.938	1.005	1-1/8	1-1/4	18.0
	PHL8WF	61/64	0.953	1.015	1-1/8	1-1/4	18.5
		62/64	0.969	1.030	1-1/8	1-1/4	18.1
		63/64	0.984	1.040	1-1/8	1-1/4	18.6
		1	1.000	1.055	1-1/8	1-1/4	18.2
		1-1/64	1.016	1.065	1-1/8	1-1/4	18.8
		1-2/64	1.031	1.080	1-1/8	1-1/4	18.3
3/4"	QM4WF	1-10/64	1.156	1.220	1-1/4		18.5
	QB4WF	1-11/64	1.171	1.235	1-1/4		18.0
	QM23WF	1-12/64	1.187	1.244	1-1/4		18.7
	QB23WF	1-13/64	1.203	1.260	1-1/4		18.1
	QM44WF	1-14/64	1.218	1.270	1-1/4		18.8
	QB44WF	1-15/64	1.234	1.285	1-1/4		18.2
		1-16/64	1.250	1.295	1-1/4		18.8
	PHL12WF	1-17/64	1.265	1.310	1-1/4		18.4
		1-18/64	1.281	1.320	1-1/4		18.8
		1-19/64	1.296	1.335	1-1/4		18.5
		1-20/64	1.312	1.345	1-1/4		19.0
		1-21/64	1.328	1.360	1-1/4		18.5
		1-22/64	1.343	1.370	1-1/4		19.0

External Swage Notched Stems and Ferrules



STC200NOS



RST150NOS

- When used with an appropriate notched ferrule, these fittings can be swaged or crimped onto hose, thereby providing improved shank retention.
For hose OD's of 2-4/64" and below, these couplings are to be crimped only.
For hose OD's of 2-5/64" and above, these couplings can be crimped or swaged.
- The stem can be removed from a damaged hose by cutting away the ferrule, without necessarily damaging the fitting. *After inspection to determine its suitability for reuse, it can be reinstalled into another hose by using a new ferrule.*
- Notched stems let you use the same ferrules used with the notched (NO) cam and groove and notched turned back nipples. This lets you *maximize your inventory usage and reduce costs.*

SAFETY
ALERT

Stems

Size	PSI	Stainless Steel	Plated Carbon Steel
		Part #	Part #
1½"	250	RST150NOS	STC150NOS
2"	250	RST200NOS	STC200NOS
3"	250	RST300NOS	STC300NOS
4"	*	RST400NOS *	STC400NOS *

* Contact factory for pressure information

Ferrules



Size	Hose OD		304 Stainless Steel	Carbon Steel
	From:	To:	Part #	Part #
1½"	1-60/64"	2-12/64"	GAS2334NOS	CAS2334NOS
1½"	2-4/64"	2-22/64"	GAS2370NOS	CAS2370NOS
2"	2-30/64"	2-44/64"	GAS2709NOS	CAS2709NOS
2"	2-42/64"	2-54/64"	GAS2885NOS	CAS2885NOS
3"	3-30/64"	3-46/64"	GAS3760NOS	CAS3760NOS
3"	3-47/64"	3-54/64"	GAS3885NOS	CAS3885NOS
4"	4-40/64"	4-47/64"	GAS5010NOS	CAS5010NOS

Notched Turned Back Nipples

- When used with an appropriate notched ferrule, these fittings can be swaged or crimped onto hose, thereby providing improved shank retention.
- The stem can be removed from a damaged hose by cutting away the ferrule, without necessarily damaging the fitting. *After inspection to determine its suitability for reuse, it can be reinstalled into another hose by using a new ferrule.*
- When used with double bolt or band clamps, notched turned back nipples will provide shank retention similar to that of the King turned back nipples.
- Notched turned back nipples let you use the same ferrules used with the notched (NO) cam and groove. This lets you *maximize your inventory usage and reduce costs.*

SAFETY
ALERT



Stems

Size	316 Stainless Steel	Carbon Steel
	Part #	Part #
1½"	RN150NO	N150NO
2"	RN200NO	N200NO
3"	RN300NO	N300NO
4"	RN400NO	N400NO

Ferrules

Size	Hose OD		304 Stainless Steel
	From:	To:	Part #
1½"	1-60/64"	2-12/64"	GAS2334NO
1½"	2-4/64"	2-22/64"	GAS2370NO
2"	2-30/64"	2-44/64"	GAS2709NO
2"	2-42/64"	2-54/64"	GAS2885NO
3"	3-30/64"	3-46/64"	GAS3760NO
3"	3-47/64"	3-54/64"	GAS3885NO
4"	4-40/64"	4-47/64"	GAS5010NO



Note: Stems are for use with lap joint flanges, see current Dixon Price List.

- * Special pushers required: 1½" stem - RN150NOPUSH
 2" stem - RN200NOPUSH
 3" stem - RN300NOPUSH
 4" stem - RN400NOPUSH