

## Air & Vacuum Relief Tank Vent Valve

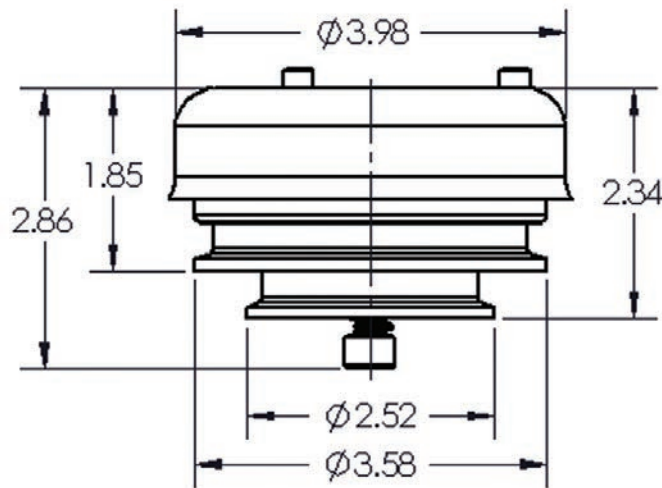
### Features:

- valve relieves pressure as the fluid level rises while filling a tank
- valve relieves vacuum as the fluid level drops while emptying a tank
- 2" and 3" clamp connections on the same valve
- dome helps in preventing external contamination
- light weight, robust PVC and 304 stainless steel construction
- can use any clamp gasket
- maximum flow rate: 500 GPM
- vacuum break: .1 **PSI**
- pressure relief: .1 **PSI**

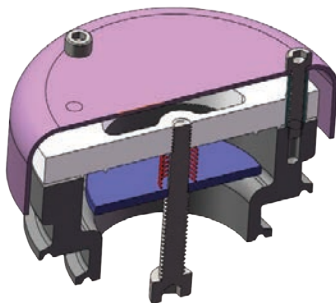


Size	304 Stainless Steel Part #	Price/E
2" - 3"	<b>TVPC200-300</b>	<b>\$98.55</b>

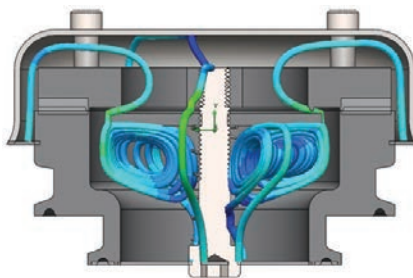
### Dimensions



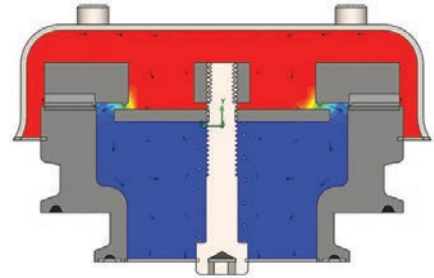
N



Assembly



Vent Flow Pipes



Pressure Analysis