


## Aluminum Grooved Clamps

### Features:

- 2" pressure rating: **400 PSI**
- 3" pressure rating: **170 PSI**
- 4" pressure rating: **120 PSI**
- bolt torque: 50 ft. lbs.
- precision casting and machined dimensions provide an exact fit and great appearance
- use of lock nuts prevents clamps from loosening in high vibration applications
- leak-tight connection
- are intended for tank truck applications only 

- Unlike steel groove clamps that secure pipe ends with high clamp force against the tubing walls, the Dixon™ bolted clamp takes the full bolt force and locks in the groove of the tube preventing distortion of the tube diameter.
- FKM-B rated for 100% biodiesel and Ethanol
- Buna-N rated for petroleum service, Ethanol to E100 and biodiesel to B20
- Baylast™ rated for petroleum service, Ethanol to E100 and biodiesel to B100
- white buna-N for use in dry bulk food applications

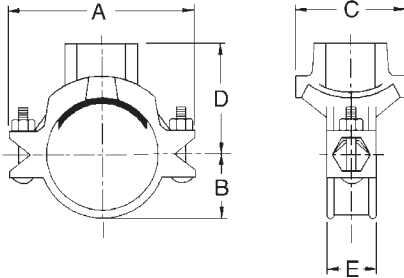
Description	Part #	Price/E
2" aluminum bolted clamp with FKM-B gasket	<b>DBV-VB200</b>	<b>\$79.85</b>
3" aluminum bolted clamp with FKM-B gasket	<b>DBV-VB300</b>	<b>90.20</b>
4" aluminum bolted clamp with FKM-B gasket	<b>DBV-VB400</b>	<b>148.55</b>
3" aluminum bolted clamp with buna-N gasket	<b>DBV-BN300</b>	<b>37.15</b>
4" aluminum bolted clamp with buna-N gasket	<b>DBV-BN400</b>	<b>47.75</b>
2" aluminum bolted clamp with Baylast™ gasket	<b>DBV-BL200</b>	<b>51.50</b>
3" aluminum bolted clamp with Baylast™ gasket	<b>DBV-BL300</b>	<b>61.15</b>
4" aluminum bolted clamp with Baylast™ gasket	<b>DBV-BL400</b>	<b>77.25</b>
4" aluminum bolted clamp with white buna-N gasket	<b>DBV-WB400</b>	<b>58.35</b>
2" FKM-B grooved coupling replacement gasket	<b>G200VB</b>	<b>61.05</b>
3" FKM-B grooved coupling replacement gasket	<b>G300VB</b>	<b>58.35</b>
4" FKM-B grooved coupling replacement gasket	<b>G400VB</b>	<b>116.70</b>
3" buna-N grooved coupling replacement gasket	<b>G300T</b>	<b>12.30</b>
4" buna-N grooved coupling replacement gasket	<b>G400T</b>	<b>17.90</b>
2" Baylast™ grooved coupling replacement gasket	<b>G200BL</b>	<b>29.00</b>
3" Baylast™ grooved coupling replacement gasket	<b>G300BL</b>	<b>34.95</b>
4" Baylast™ grooved coupling replacement gasket	<b>G400BL</b>	<b>41.45</b>
4" white buna-N grooved coupling replacement gasket	<b>G400N</b>	<b>36.50</b>



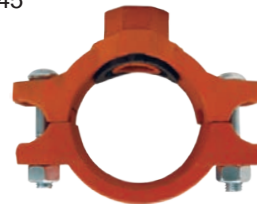
clamp with black buna gasket  
Note: Supplied clamp gasket must be installed prior to use, ships separately.

### Features:

- Provides a fast easy way to install a threaded connection along a length of pipe. After drilling or cutting a hole in the pipe at the location of the branch connection, simply attach the clamps around the pipe for a leak-free threaded outlet connection. See chart below for drilling hole specifications



- ductile iron body with rust inhibiting paint
- Underwriters Listed and Factory Mutual approved
- maximum operating pressure: **300 PSI** at 70°F
- see page 751 for replacement gaskets, nuts and bolts
- Comparable to:  
Victaulic's #920  
Grinnell's #7045



Nominal Size	Branch Size	Hole Saw diameter	Max. End Load Lbs.	Coupling Dimensions					Approx. Wt (lbs.)	Bolts			Ductile Iron	
				A	B	C	D	E		qty	size	length	Part #	Price/E
2"	1"	1½"	1⅝"	4½"	1⅝"	2¾"	2¼"	1⅞"	2.4	2	⅜"	2"	<b>MT2010</b>	<b>\$37.45</b>
2"	1¼"	1¾"	1⅞"	4½"	1⅝"	2¾"	2½"	1⅞"	2.9	2	⅜"	2"	<b>MT20125</b>	<b>41.20</b>
2"	1½"	1¾"	1⅞"	4½"	1⅝"	2¾"	2½"	1⅞"	2.8	2	⅜"	2"	<b>MT20150</b>	<b>41.20</b>
2½"	1"	1½"	1⅝"	5-5/32"	1-11/16"	3"	2-31/32"	2"	3.1	2	½"	2⅝"	<b>MT25010</b>	<b>47.45</b>
2½"	1¼"	2"	2⅛"	5-13/16"	1-11/16"	3-11/32"	3"	2"	3.3	2	½"	2⅝"	<b>MT250125</b>	<b>51.20</b>
3"	1"	1½"	1⅝"	6-11/32"	2-1/8"	3-3/32"	3-1/16"	2"	3.3	2	½"	2¾"	<b>MT3010</b>	<b>56.20</b>
3"	1½"	2"	2⅛"	6-11/32"	2-1/8"	3-3/4"	3-3/8"	2"	3.4	2	½"	2¾"	<b>MT30150</b>	<b>51.20</b>
4"	1"	1½"	1⅝"	7-5/16"	2-9/16"	3-3/32"	3-1/2"	2"	4.4	2	½"	2¾"	<b>MT4010</b>	<b>71.45</b>
4"	1¼"	2"	2⅛"	7-5/16"	2-9/16"	3-3/4"	3-7/8"	2"	5.1	2	½"	2¾"	<b>MT40125</b>	<b>58.65</b>
4"	1½"	2"	2⅛"	7-5/16"	2-9/16"	3-3/4"	3-7/8"	2"	4.9	2	½"	2¾"	<b>MT40150</b>	<b>61.15</b>
4"	2"	2½"	2⅝"	7-5/16"	2-9/16"	4-1/8"	4"	2"	5.3	2	½"	2¾"	<b>MT4020</b>	<b>61.15</b>
4"	2½"	2¾"	2⅞"	7-5/16"	2-9/16"	4-3/8"	4"	2"	5.4	2	½"	2¾"	<b>MT40250</b>	<b>63.65</b>
4"	3"	3½"	3⅝"	7-5/16"	2-9/16"	5-1/4"	4-1/4"	2"	6.4	2	½"	2¾"	<b>MT4030</b>	<b>68.05</b>
6"	1¼"	2½"	2⅝"	10-5/32"	3-11/16"	4-1/8"	4-7/8"	2¼"	8.6	2	⅝"	3¼"	<b>MT60125</b>	<b>76.75</b>
6"	1½"	2½"	2⅝"	10-5/32"	3-11/16"	4-1/8"	4-7/8"	2¼"	8.4	2	⅝"	3¼"	<b>MT60150</b>	<b>76.75</b>
6"	2"	2½"	2⅝"	10-5/32"	3-11/16"	4-1/8"	5"	2¼"	7.6	2	⅝"	3¼"	<b>MT6020</b>	<b>76.75</b>
6"	3"	3½"	3⅝"	10-5/32"	3-11/16"	5-1/4"	5-3/8"	2¼"	9.2	2	⅝"	3¼"	<b>MT6030</b>	<b>88.65</b>