

DATA SHEET

Three Phase Induction Motor - Squirrel Cage



Customer :

Product line : W40 JP Pump High Efficiency
Three-Phase

Product code : 14829289

Catalog # : 04036OP3EFP286JPV-W4

Frame : 284/6JP
Output : 40 HP (30 kW)
Poles : 2
Frequency : 60 Hz
Rated voltage : 230/460 V
Rated current : 94.4/47.2 A
L. R. Amperes : 576/288 A
LRC : 6.1x(Code G)
No load current : 28.0/14.0 A
Rated speed : 3535 rpm
Slip : 1.81 %
Rated torque : 59.4 ft.lb
Locked rotor torque : 170 %
Breakdown torque : 250 %
Insulation class : F
Service factor : 1.15
Moment of inertia (J) : 1.91 sq.ft.lb
Design : B

Locked rotor time : 18s (cold) 10s (hot)
Temperature rise : 80 K
Duty cycle : Cont.(S1)
Ambient temperature : -20°C to +40°C
Altitude : 1000 m.a.s.l.
Protection degree : IP23
Cooling method : IC01 - ODP
Mounting : W-6
Rotation¹ : Both (CW and CCW)
Starting method : Direct On Line
Approx. weight³ : 350 lb

Output	25%	50%	75%	100%
--------	-----	-----	-----	------

Efficiency (%)	90.8	91.0	91.7	91.7
Power Factor	0.54	0.78	0.86	0.87

Foundation loads

Max. traction

Max. compression

	Drive end	Non drive end
Bearing type	6311 Z C3	6211 Z C3
Sealing	Without Bearing Seal	Without Bearing Seal
Lubrication interval	11517 h	14226 h
Lubricant amount	18 g	11 g
Lubricant type	Mobil Polyrex EM	

Notes

USABLE @208V 104A SF 1.00 SFA 104A

This revision replaces and cancel the previous one, which must be eliminated.

- (1) Looking the motor from the shaft end.
- (2) Measured at 1m and with tolerance of +3dB(A).
- (3) Approximate weight subject to changes after manufacturing process.
- (4) At 100% of full load.

These are average values based on tests with sinusoidal power supply, subject to the tolerances stipulated in NEMA MG-1.

Rev.	Changes Summary	Performed	Checked	Date
Performed by		Page 1 / 6		
Checked by				
Date	10/04/2020			
		Revision		

TORQUE AND CURRENT VS SPEED CURVE

Three Phase Induction Motor - Squirrel Cage

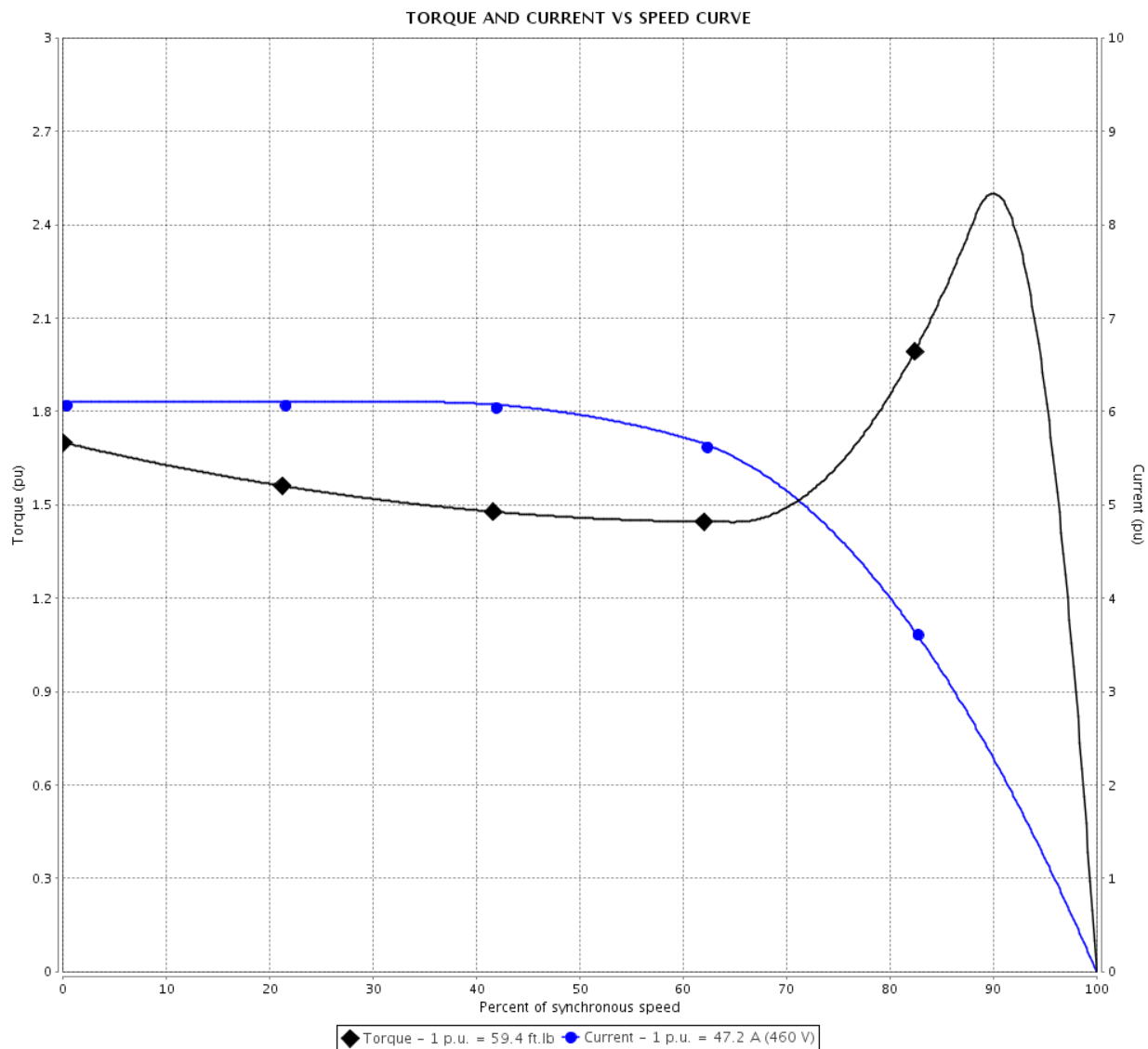


Customer :

Product line : W40 JP Pump High Efficiency
Three-Phase

Product code : 14829289

Catalog # : 04036OP3EFP286JPV-W4



Performance : 230/460 V 60 Hz 2P

Rated current : 94.4/47.2 A
LRC : 6.1
Rated torque : 59.4 ft.lb
Locked rotor torque : 170 %
Breakdown torque : 250 %
Rated speed : 3535 rpm

Moment of inertia (J) : 1.91 sq.ft.lb
Duty cycle : Cont.(S1)
Insulation class : F
Service factor : 1.15
Temperature rise : 80 K
Design : B

Locked rotor time : 18s (cold) 10s (hot)

Rev.	Changes Summary	Performed	Checked	Date
Performed by		<div>Page</div> <div>2 / 6</div> <div>Revision</div>		
Checked by				
Date	10/04/2020			

LOAD PERFORMANCE CURVE

Three Phase Induction Motor - Squirrel Cage

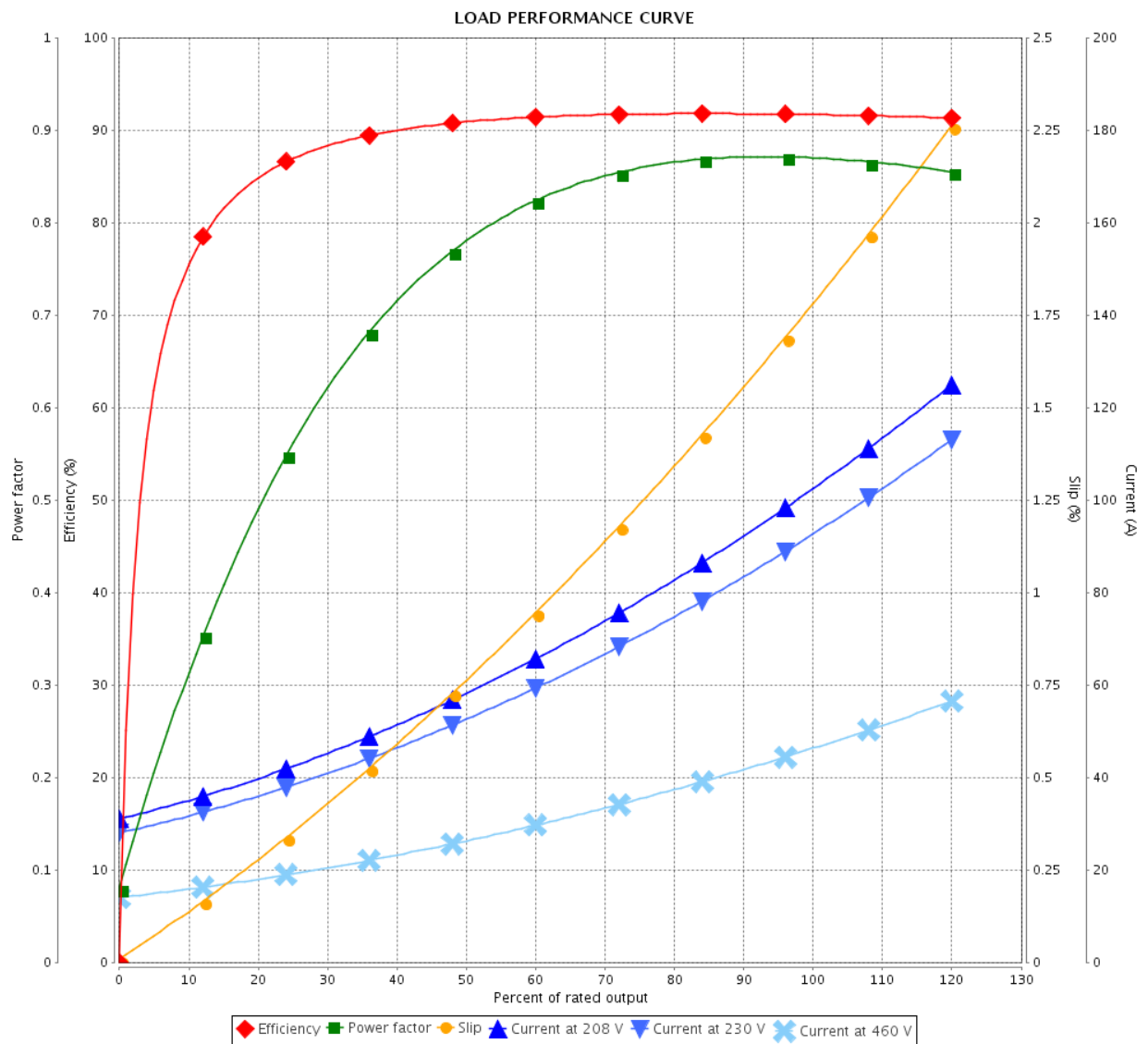


Customer :

Product line : W40 JP Pump High Efficiency
Three-Phase

Product code : 14829289

Catalog # : 04036OP3EFP286JPV-W4



Performance : 230/460 V 60 Hz 2P

Rated current : 94.4/47.2 A
LRC : 6.1
Rated torque : 59.4 ft.lb
Locked rotor torque : 170 %
Breakdown torque : 250 %
Rated speed : 3535 rpm

Moment of inertia (J) : 1.91 sq.ft.lb
Duty cycle : Cont.(S1)
Insulation class : F
Service factor : 1.15
Temperature rise : 80 K
Design : B

Rev.	Changes Summary	Performed	Checked	Date
Performed by		Page 3 / 6		
Checked by				
Date	10/04/2020			
		Revision		

THERMAL LIMIT CURVE

Three Phase Induction Motor - Squirrel Cage



Customer :

Product line : W40 JP Pump High Efficiency
Three-Phase

Product code : 14829289

Catalog # : 04036OP3EFP286JPV-W4

Performance : 230/460 V 60 Hz 2P

Rated current : 94.4/47.2 A
LRC : 6.1
Rated torque : 59.4 ft.lb
Locked rotor torque : 170 %
Breakdown torque : 250 %
Rated speed : 3535 rpm

Moment of inertia (J) : 1.91 sq.ft.lb
Duty cycle : Cont.(S1)
Insulation class : F
Service factor : 1.15
Temperature rise : 80 K
Design : B

Heating constant

Cooling constant

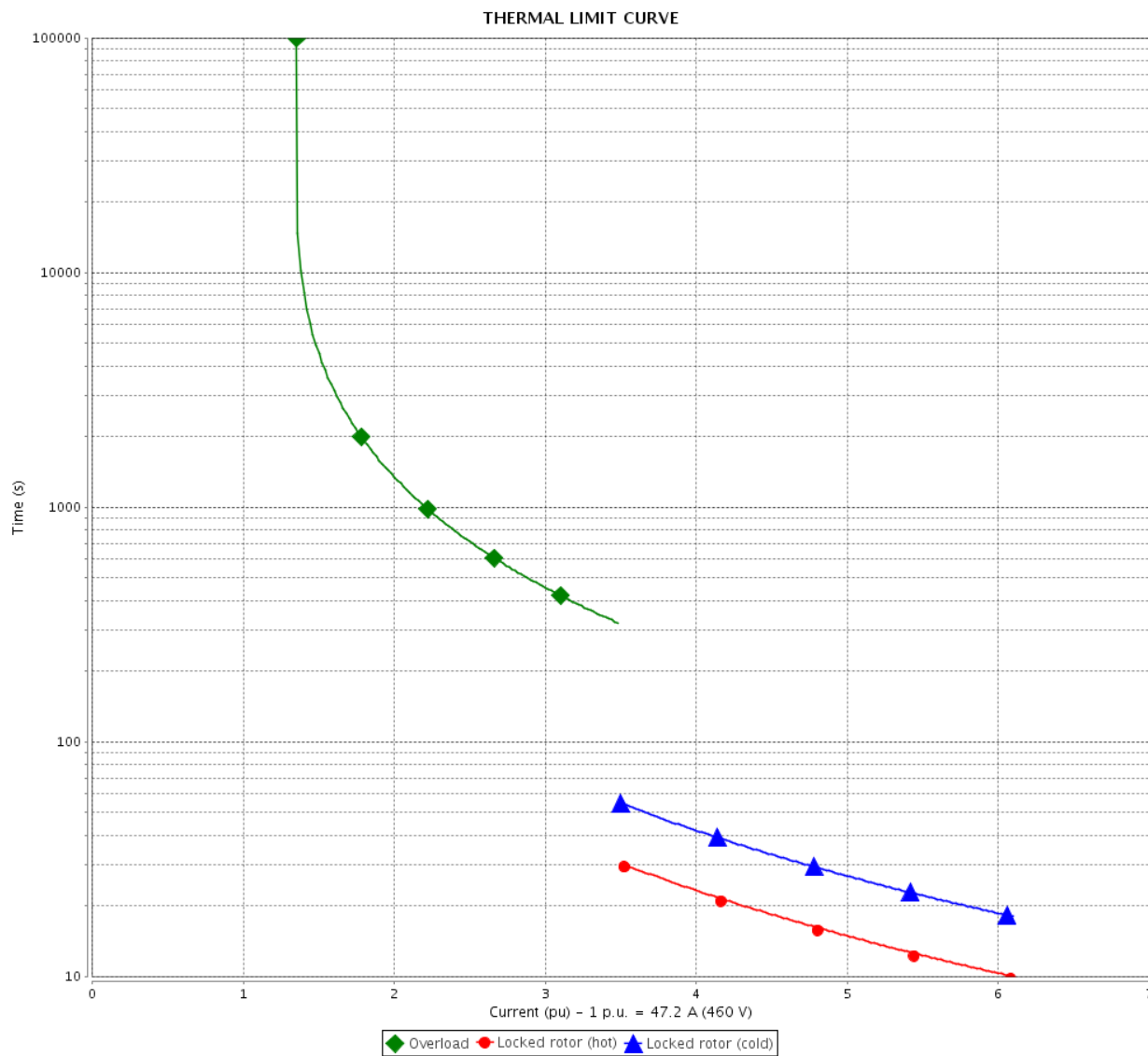
Rev.	Changes Summary		Performed	Checked	Date
Performed by			Page 4 / 6		Revision
Checked by					
Date	10/04/2020				

THERMAL LIMIT CURVE

Three Phase Induction Motor - Squirrel Cage



Customer : _____



Rev.	Changes Summary	Performed	Checked	Date
Performed by		<div>Page</div> <div>5 / 6</div> <div>Revision</div>		
Checked by				
Date	10/04/2020			

VFD OPERATION CURVE

Three Phase Induction Motor - Squirrel Cage

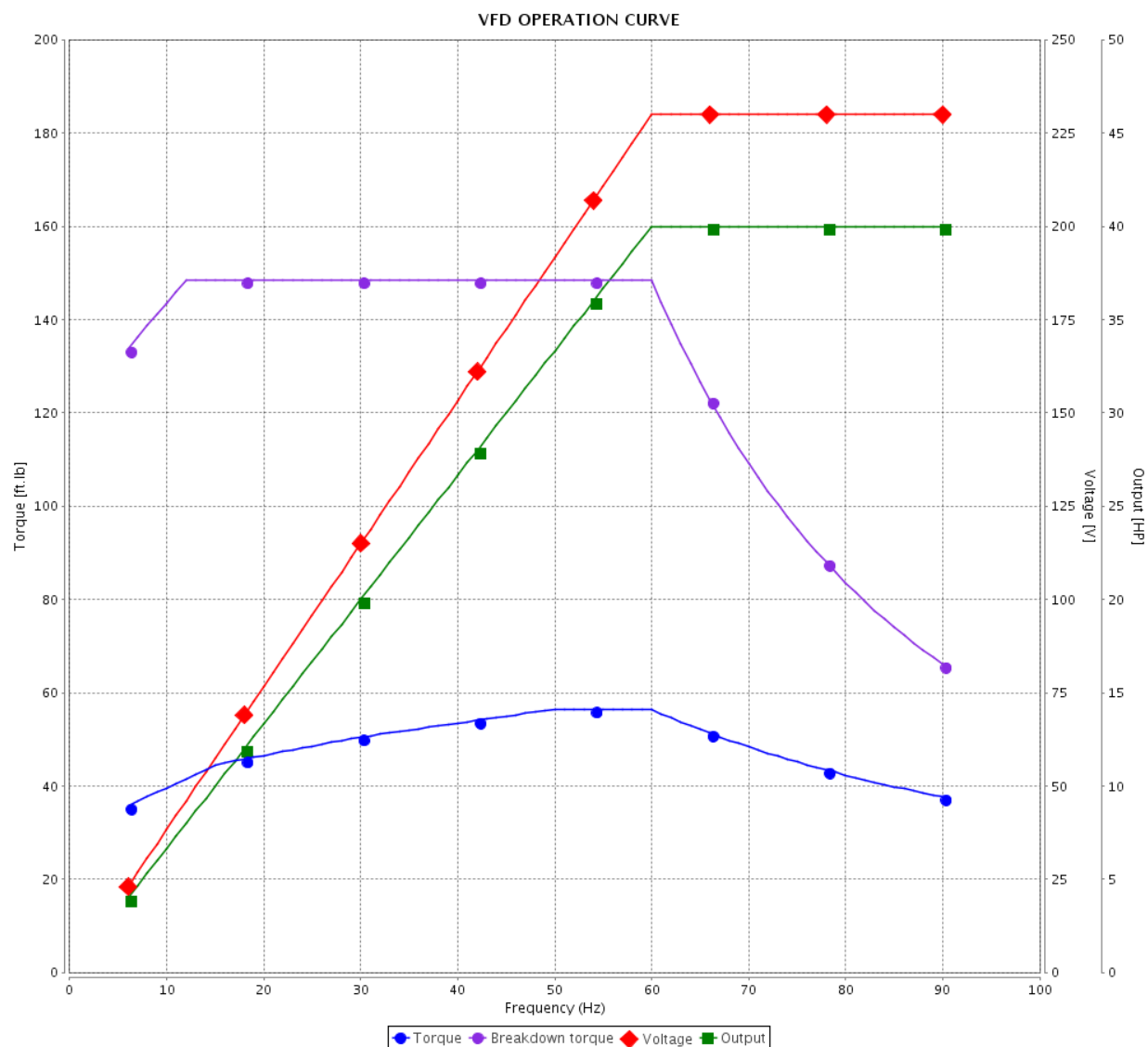


Customer :

Product line : W40 JP Pump High Efficiency
Three-Phase

Product code : 14829289

Catalog # : 04036OP3EFP286JPV-W4

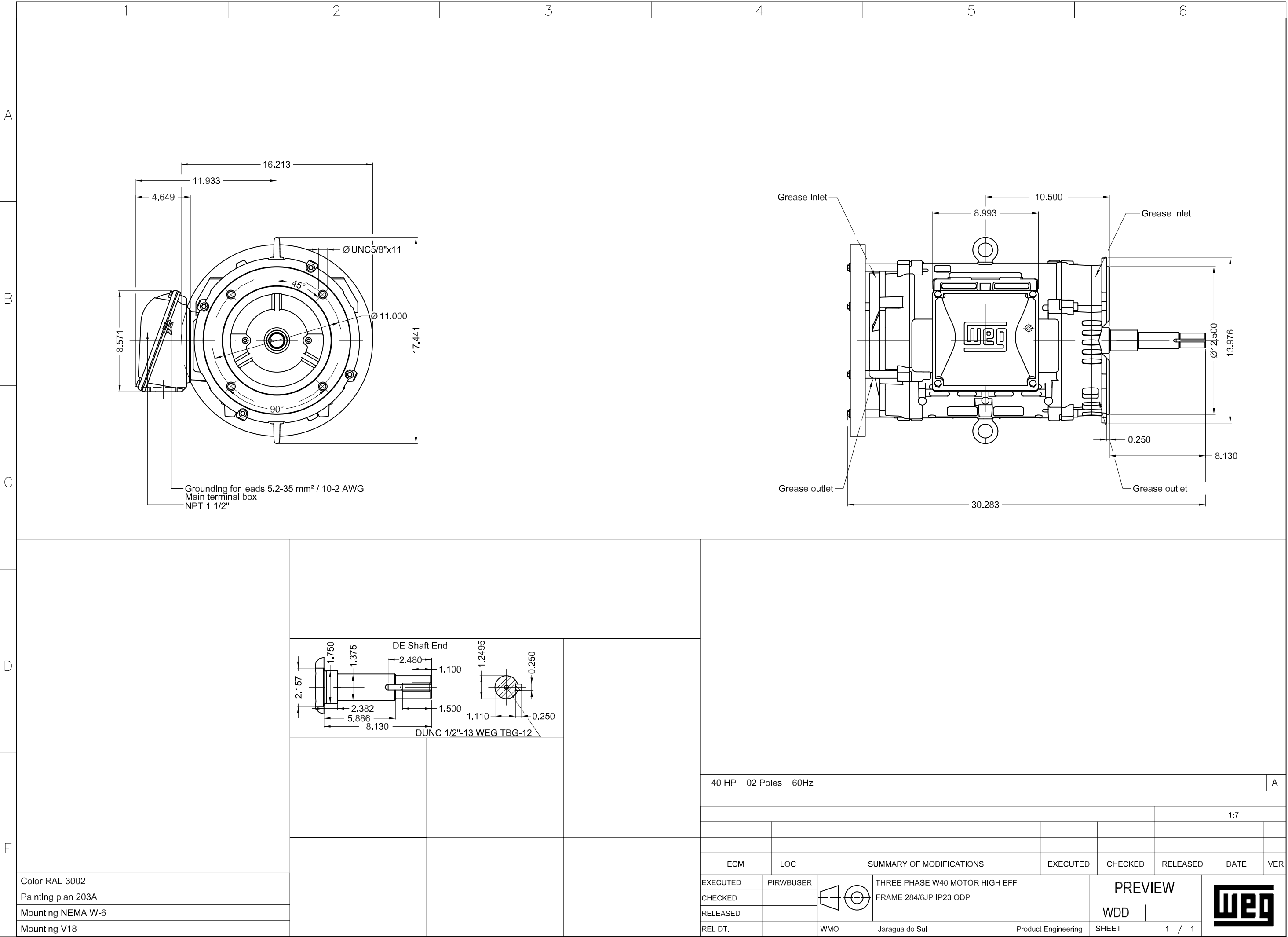


Performance : 230/460 V 60 Hz 2P

Rated current : 94.4/47.2 A
LRC : 6.1
Rated torque : 59.4 ft.lb
Locked rotor torque : 170 %
Breakdown torque : 250 %
Rated speed : 3535 rpm

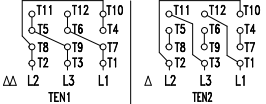


Moment of inertia (J) : 1.91 sq.ft.lb
Duty cycle : Cont.(S1)
Insulation class : F
Service factor : 1.15
Temperature rise : 80 K
Design : B

Rev.	Changes Summary	Performed	Checked	Date
Performed by		<div>Page 6 / 6</div> <div>Revision</div>		
Checked by				
Date	10/04/2020			





Severe Duty

PH	FR		HP(kW)		Hz			
V —	A —		RPM		DES —			
NEMA NOM EFF		— %		INS. CL. Δ T		K		
ENCL ODP		DUTY		AMB.				
CODE	PF	SF	SFA					
USABLE @208V								
ALT 1000 m.a.s.l.							Lbs	