

DATA SHEET

Three Phase Induction Motor - Squirrel Cage



Customer :				
Product line		: Rolled Steel NEMA Premium Efficiency Three-Phase		Product code : 14593693
				Catalog # : 00718ET3EBMR213TC-S
Frame : 213/5TC Output : 7.5 HP (5.5 kW) Poles : 4 Frequency : 60 Hz Rated voltage : 230/460 V Rated current : 18.1/9.07 A L. R. Amperes : 132/66.2 A LRC : 7.3x(Code H) No load current : 8.81/4.41 A Rated speed : 1770 rpm Slip : 1.67 % Rated torque : 22.3 ft.lb Locked rotor torque : 260 % Breakdown torque : 300 % Insulation class : F Service factor : 1.15 Moment of inertia (J) : 0.9380 sq.ft.lb Design : B		Locked rotor time : 39s (cold) 22s (hot) Temperature rise : 80 K Duty cycle : Cont.(S1) Ambient temperature : -20°C to +40°C Altitude : 1000 m.a.s.l. Protection degree : IP55 Cooling method : IC411 - TEFC Mounting : F-1 Rotation ¹ : Both (CW and CCW) Noise level ² : 60.0 dB(A) Starting method : Direct On Line Approx. weight ³ : 156 lb		
Output	50%	75%	100%	Foundation loads
Efficiency (%)	90.2	91.0	91.7	Max. traction : 377 lb
Power Factor	0.64	0.76	0.82	Max. compression : 533 lb
		<u>Drive end</u>	<u>Non drive end</u>	
Bearing type	:	6208 ZZ	6206 ZZ	
Sealing	:	V'Ring	V'Ring	
Lubrication interval	:	-	-	
Lubricant amount	:	-	-	
Lubricant type	:	Mobil Polyrex EM		
Notes USABLE @208V 20.1A SF 1.00 SFA 20.1A				
This revision replaces and cancel the previous one, which must be eliminated. (1) Looking the motor from the shaft end. (2) Measured at 1m and with tolerance of +3dB(A). (3) Approximate weight subject to changes after manufacturing process. (4) At 100% of full load.			These are average values based on tests with sinusoidal power supply, subject to the tolerances stipulated in NEMA MG-1.	
Rev.	Changes Summary		Performed	Checked
Performed by				
Checked by				
Date	10/04/2020			
			Page	Revision
			1 / 7	

DATA SHEET

Three Phase Induction Motor - Squirrel Cage



Customer

:

Brake information

Voltage: 208-230/460//190/380 V

Brake Torque: 34.7 ft.lb

Rev.

Changes Summary

Performed

Checked

Date

Performed by

Checked by

Date

10/04/2020

Page

2 / 7

Revision

TORQUE AND CURRENT VS SPEED CURVE

Three Phase Induction Motor - Squirrel Cage

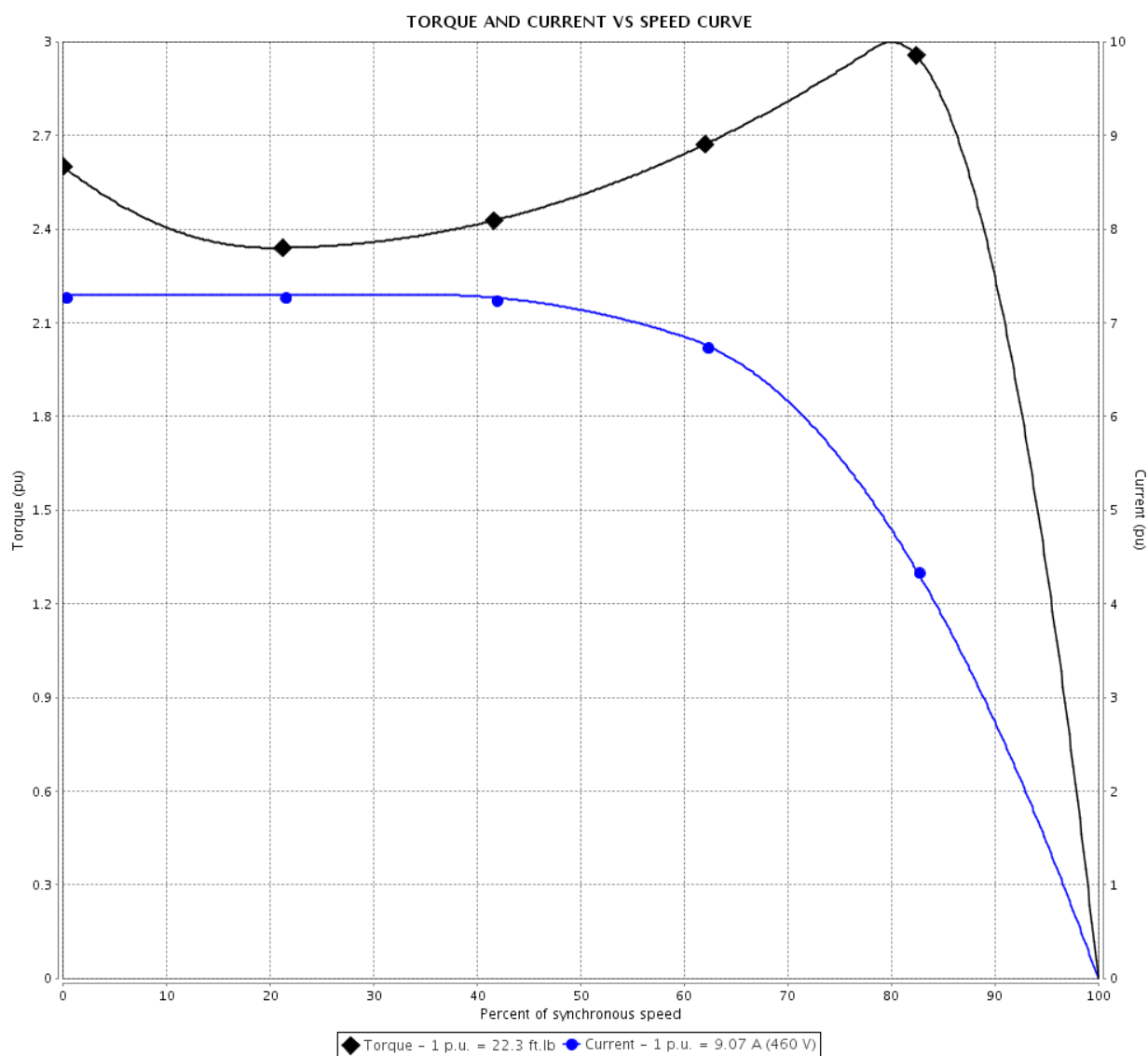


Customer :

Product line : Rolled Steel NEMA Premium
Efficiency Three-Phase

Product code : 14593693

Catalog # : 00718ET3EBMR213TC-S



Performance : 230/460 V 60 Hz 4P

Rated current : 18.1/9.07 A
LRC : 7.3
Rated torque : 22.3 ft.lb
Locked rotor torque : 260 %
Breakdown torque : 300 %
Rated speed : 1770 rpm

Moment of inertia (J) : 0.9380 sq.ft.lb
Duty cycle : Cont.(S1)
Insulation class : F
Service factor : 1.15
Temperature rise : 80 K
Design : B

Locked rotor time : 39s (cold) 22s (hot)

Rev.	Changes Summary	Performed	Checked	Date
Performed by		Page 3 / 7		
Checked by				
Date	10/04/2020			
		Revision		

LOAD PERFORMANCE CURVE

Three Phase Induction Motor - Squirrel Cage



Customer :

Product line

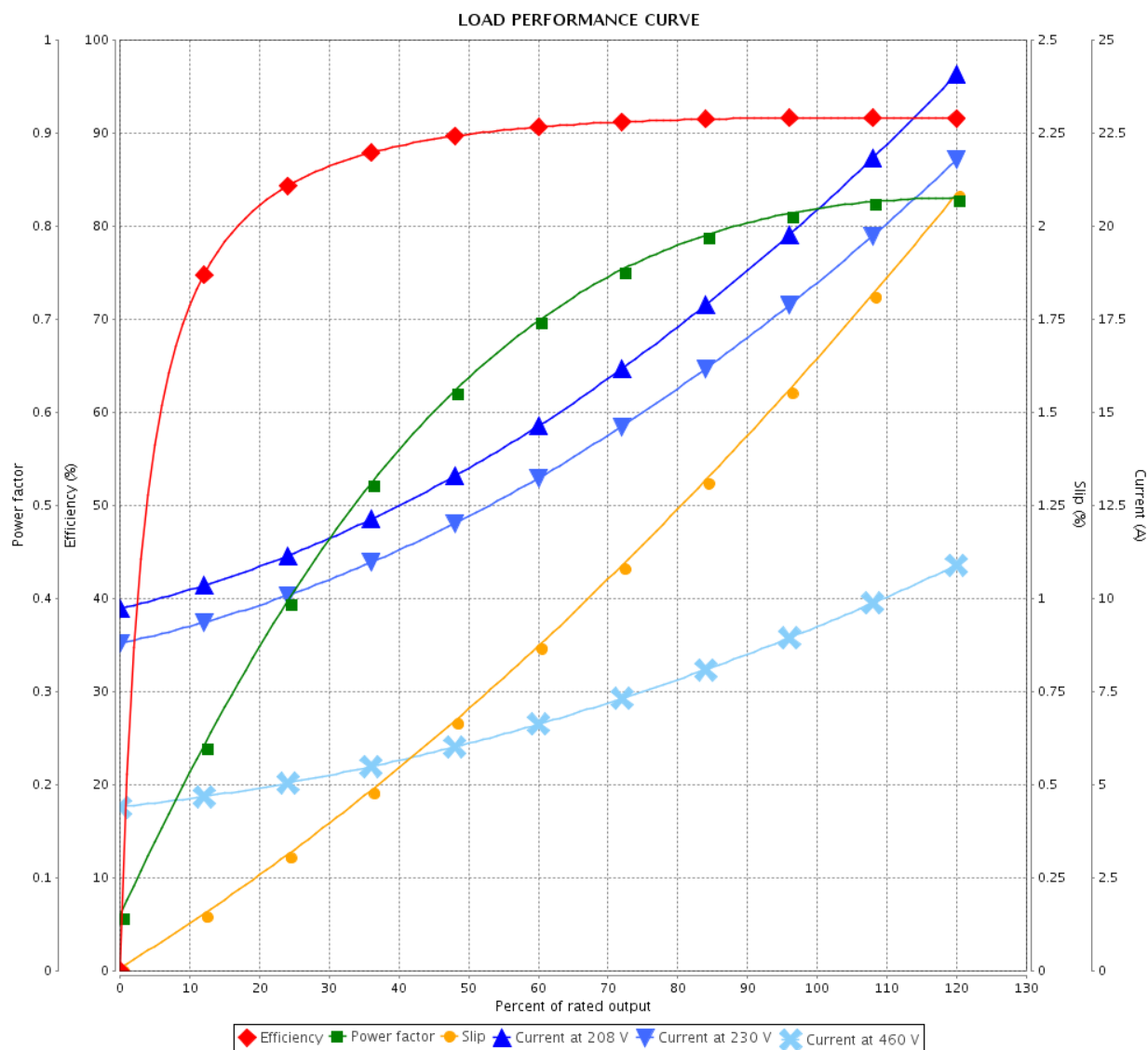
: Rolled Steel NEMA Premium
Efficiency Three-Phase

Product code :

14593693

Catalog # :

00718ET3EBMR213TC-S



Performance : 230/460 V 60 Hz 4P

Rated current : 18.1/9.07 A
LRC : 7.3
Rated torque : 22.3 ft.lb
Locked rotor torque : 260 %
Breakdown torque : 300 %
Rated speed : 1770 rpm

Moment of inertia (J) : 0.9380 sq.ft.lb
Duty cycle : Cont.(S1)
Insulation class : F
Service factor : 1.15
Temperature rise : 80 K
Design : B

Rev.	Changes Summary		Performed	Checked	Date
Performed by				Page	Revision
Checked by				4 / 7	
Date					

THERMAL LIMIT CURVE

Three Phase Induction Motor - Squirrel Cage



Customer :

Product line : Rolled Steel NEMA Premium
Efficiency Three-Phase

Product code : 14593693

Catalog # : 00718ET3EBMR213TC-S

Performance : 230/460 V 60 Hz 4P

Rated current : 18.1/9.07 A
LRC : 7.3
Rated torque : 22.3 ft.lb
Locked rotor torque : 260 %
Breakdown torque : 300 %
Rated speed : 1770 rpm

Moment of inertia (J) : 0.9380 sq.ft.lb
Duty cycle : Cont.(S1)
Insulation class : F
Service factor : 1.15
Temperature rise : 80 K
Design : B

Heating constant

Cooling constant

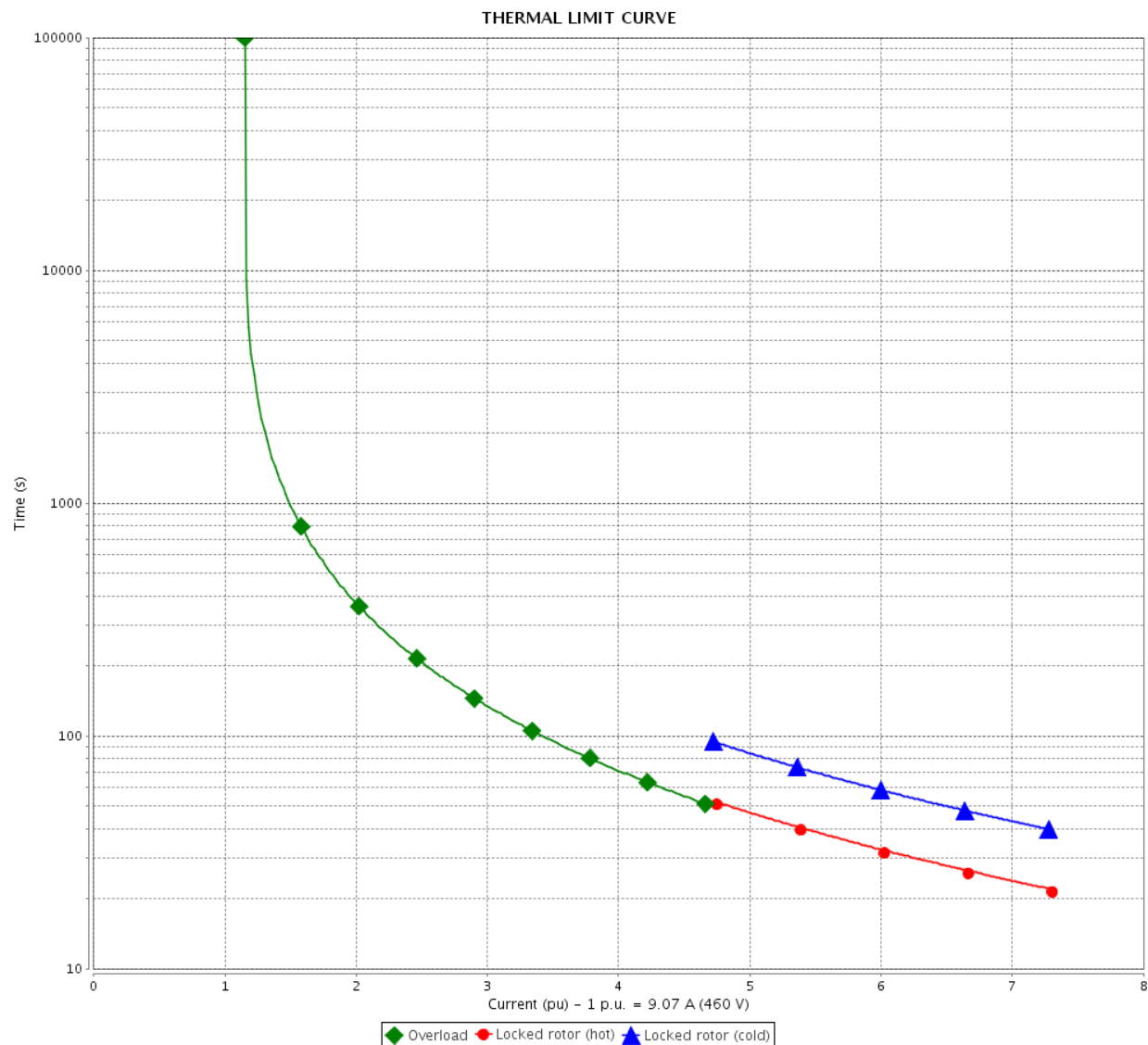
Rev.	Changes Summary	Performed	Checked	Date
Performed by		Page 5 / 7		Revision
Checked by				
Date	10/04/2020			

THERMAL LIMIT CURVE

Three Phase Induction Motor - Squirrel Cage



Customer :



Rev.	Changes Summary		Performed	Checked	Date
Performed by				Page	Revision
Checked by				6 / 7	
Date	10/04/2020				

VFD OPERATION CURVE

Three Phase Induction Motor - Squirrel Cage

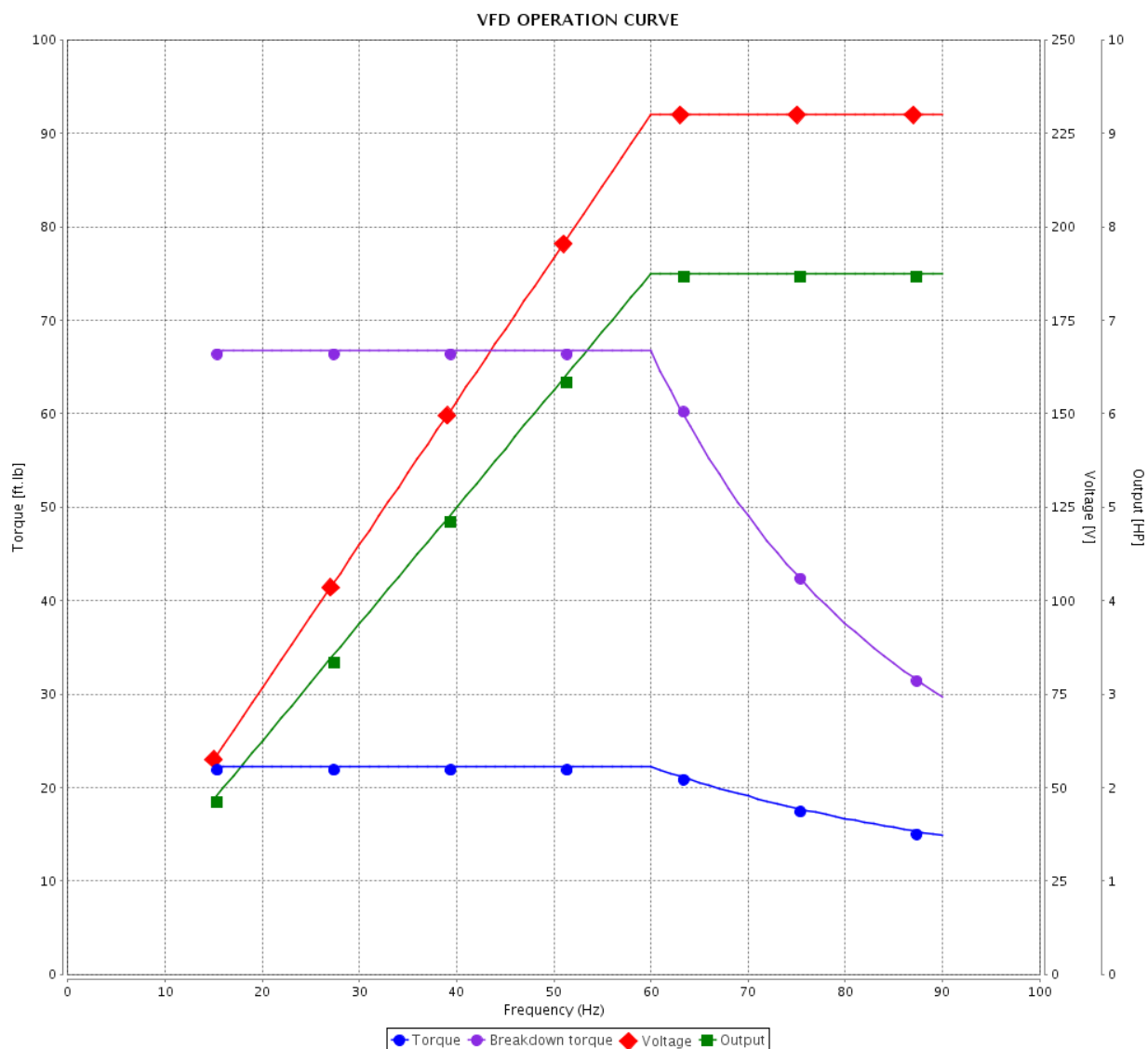


Customer :

Product line : Rolled Steel NEMA Premium
Efficiency Three-Phase

Product code : 14593693

Catalog # : 00718ET3EBMR213TC-S

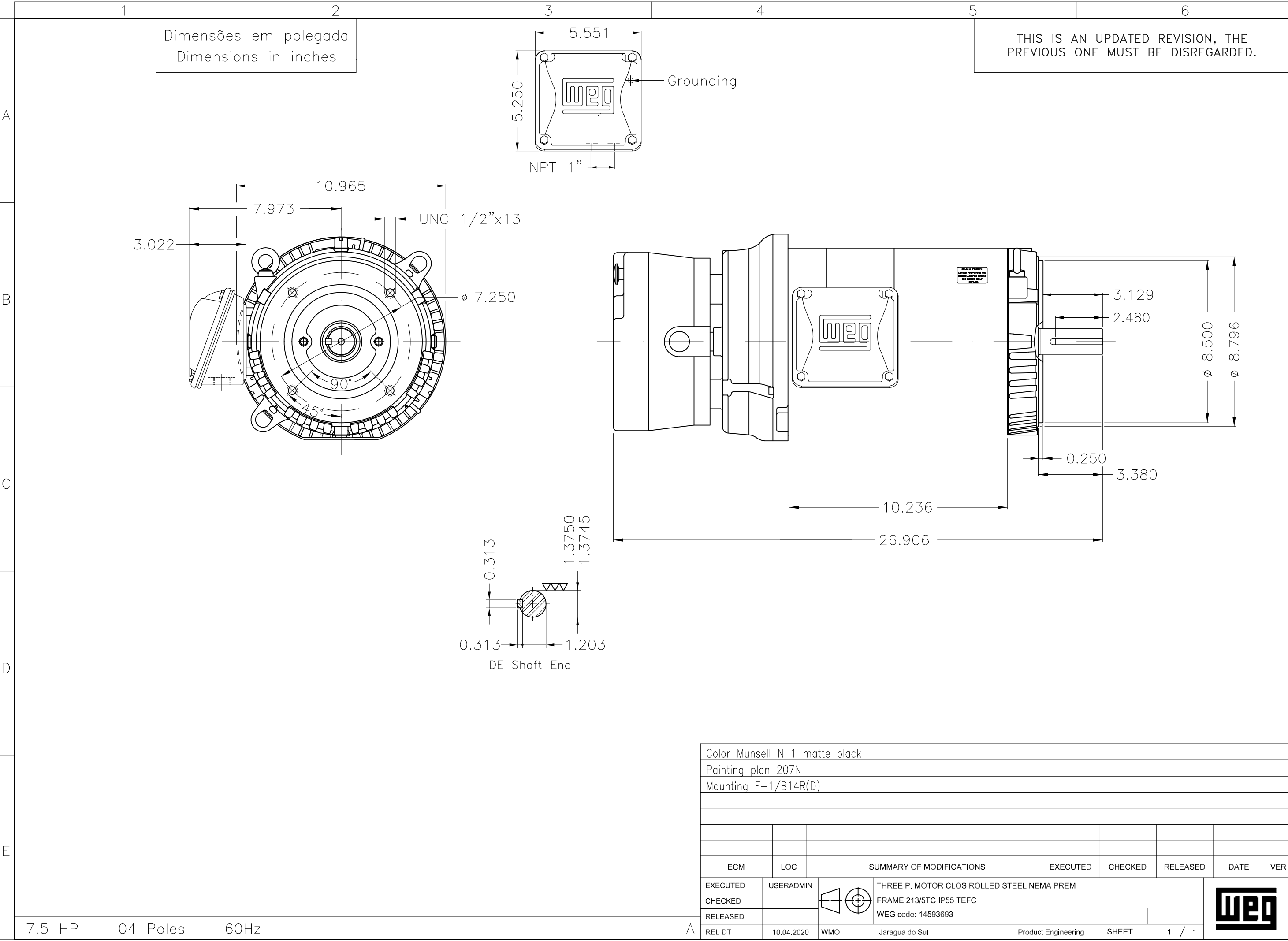


Performance : 230/460 V 60 Hz 4P

Rated current : 18.1/9.07 A
LRC : 7.3
Rated torque : 22.3 ft.lb
Locked rotor torque : 260 %
Breakdown torque : 300 %
Rated speed : 1770 rpm

Moment of inertia (J) : 0.9380 sq.ft.lb
Duty cycle : Cont.(S1)
Insulation class : F
Service factor : 1.15
Temperature rise : 80 K
Design : B

Rev.	Changes Summary	Performed	Checked	Date
Performed by		Page 7 / 7		
Checked by				
Date	10/04/2020			
		Revision		



Color Munsell N 1 matte black						
Painting plan 207N						
Mounting F-1/B14R(D)						
ECM	LOC	SUMMARY OF MODIFICATIONS		EXECUTED	CHECKED	RELEASED
EXECUTED	USERADMIN			THREE P. MOTOR CLOS ROLLED STEEL NEMA PREM FRAME 213/5TC IP55 TEFC WEG code: 14593693		
CHECKED						
RELEASED						
REL DT	10.04.2020	WMO	Jaragua do Sul	Product Engineering	SHEET	1 / 1



NEMA
Premium



3PT9
UL US LISTED
FOR SAFE AREA



Energy Verified

MADE IN MEXICO

MAT: 14593693 CC029A

W01.TE0IC0X0N

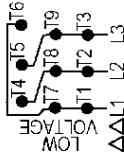
MODEL 00718ET3EBMR213TC-S

01ABR2019 S/N:

For 60Hz: Class I, Zone 2, IIC
Class I, Div.2, Gr. A,B,C,D - T3
Div 2 Inverter Duty (SF1.00)

CT 2:1/VT 1000:1

PH 3	FR	213/5TC	HP(KW)	7.5(5.5)	Hz	60
V	230/460		RPM	1770		
A	18.1/9.07		DUTY CONT.			
SFA	20.8/10.4		CODE	H	DES	B IP55
SF	1.15	INS	CL	F	AT	40°C ENCL TEFC
PF	0.82		NEMA NOM.EFF. 91.7%			
ALT	1000	m.a.s.l.	USABLE @	208V	20.1A	SF1.00
ALTERNATE RATING: 7.5HP 50Hz 190-220/380-415V SF1.00						
22.0-19.4/11.0-10.3A 1455RPM EFF 88.6% (IE2) IEC 60034-1						



INTERCHANGE ANY TWO LINE WIRES TO REVERSE THE ROTATION

For safe area-Inverter duty For 60Hz use on VPWM 1000:1 VT, 4:1 CT

DE: 6208-ZZ ODE: 6206-ZZ MOBIL POLYREX EM

WARNING: Motor must be grounded in accordance with local and national electrical codes to prevent serious electrical shocks. Disconnect power source before servicing unit.

AVERTISSEMENT: Le moteur doit être mis à la terre conformément aux codes électriques locaux et nationaux afin d'éviter tout choc électrique grave. Déconnectez l'alimentation avant l'entretien de la machine.

