

DATA SHEET

Three Phase Induction Motor - Squirrel Cage



Customer :

Product line : W40 JP Pump High Efficiency
Three-Phase

Product code : 14829214

Catalog # : 03018OP3VFP286JPV-W4

Frame : 284/6JP
Output : 30 HP (22 kW)
Poles : 4
Frequency : 60 Hz
Rated voltage : 200/400 V
Rated current : 81.9/40.9 A
L. R. Amperes : 516/258 A
LRC : 6.3x(Code F)
No load current : 25.3/12.7 A
Rated speed : 1765 rpm
Slip : 1.94 %
Rated torque : 89.3 ft.lb
Locked rotor torque : 250 %
Breakdown torque : 250 %
Insulation class : F
Service factor : 1.15
Moment of inertia (J) : 3.70 sq.ft.lb
Design : B

Locked rotor time : 39s (cold) 22s (hot)
Temperature rise : 80 K
Duty cycle : Cont.(S1)
Ambient temperature : -20°C to +40°C
Altitude : 1000 m.a.s.l.
Protection degree : IP23
Cooling method : IC01 - ODP
Mounting : W-6
Rotation¹ : Both (CW and CCW)
Starting method : Direct On Line
Approx. weight³ : 398 lb

Output	25%	50%	75%	100%
Efficiency (%)	91.5	91.7	92.4	92.4
Power Factor	0.49	0.71	0.80	0.84

Efficiency (%)	91.5	91.7	92.4	92.4
Power Factor	0.49	0.71	0.80	0.84

Foundation loads

Max. traction

Max. compression

	Drive end	Non drive end
Bearing type	6311 Z C3	6211 Z C3
Sealing	Without Bearing Seal	Without Bearing Seal
Lubrication interval	20000 h	20000 h
Lubricant amount	18 g	11 g
Lubricant type	Mobil Polyrex EM	

Notes

This revision replaces and cancel the previous one, which must be eliminated.

- (1) Looking the motor from the shaft end.
- (2) Measured at 1m and with tolerance of +3dB(A).
- (3) Approximate weight subject to changes after manufacturing process.
- (4) At 100% of full load.

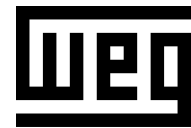
These are average values based on tests with sinusoidal power supply, subject to the tolerances stipulated in NEMA MG-1.

Rev.	Changes Summary	Performed	Checked	Date
Performed by				
Checked by				
Date	10/04/2020			

Page 1 / 6
Revision

TORQUE AND CURRENT VS SPEED CURVE

Three Phase Induction Motor - Squirrel Cage

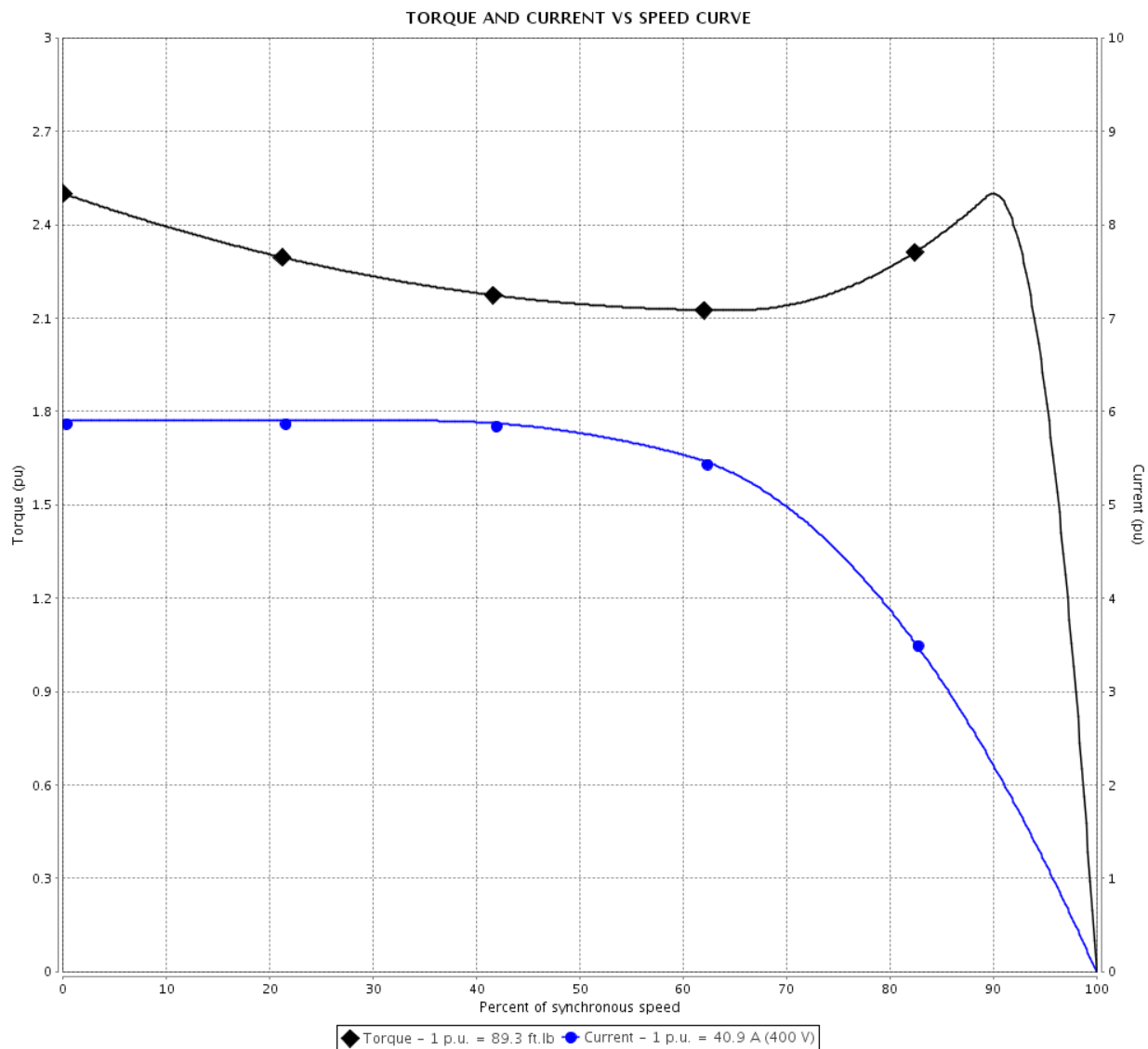


Customer :

Product line : W40 JP Pump High Efficiency
Three-Phase

Product code : 14829214

Catalog # : 03018OP3VFP286JPV-W4



Performance : 200/400 V 60 Hz 4P

Rated current : 81.9/40.9 A
LRC : 6.3
Rated torque : 89.3 ft.lb
Locked rotor torque : 250 %
Breakdown torque : 250 %
Rated speed : 1765 rpm

Moment of inertia (J) : 3.70 sq.ft.lb
Duty cycle : Cont.(S1)
Insulation class : F
Service factor : 1.15
Temperature rise : 80 K
Design : B

Locked rotor time : 39s (cold) 22s (hot)

Rev.	Changes Summary	Performed	Checked	Date
Performed by		<div>Page 2 / 6</div> <div>Revision</div>		
Checked by				
Date	10/04/2020			

LOAD PERFORMANCE CURVE

Three Phase Induction Motor - Squirrel Cage

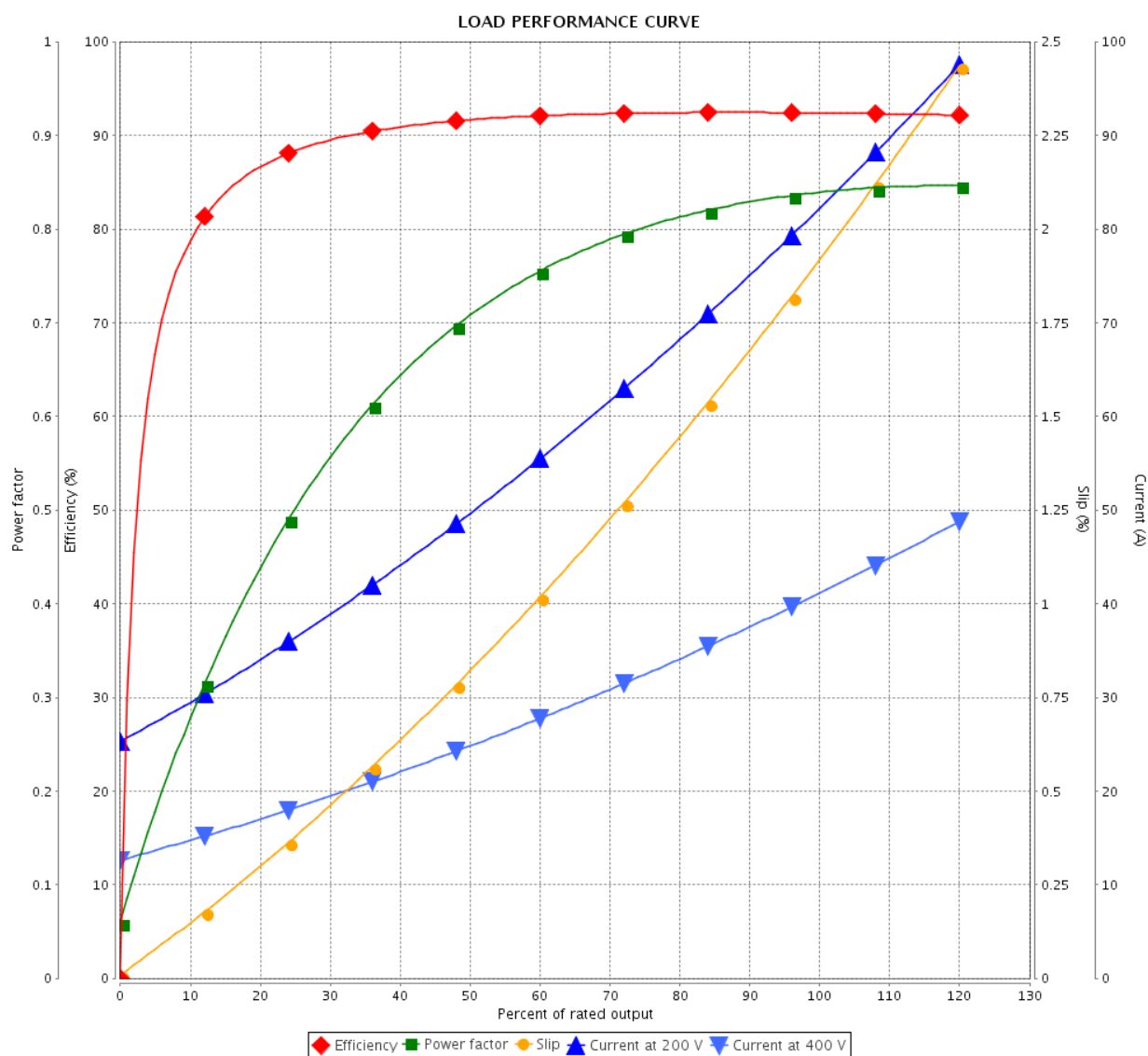


Customer :

Product line : W40 JP Pump High Efficiency
Three-Phase

Product code : 14829214

Catalog # : 03018OP3VFP286JPV-W4



Performance : 200/400 V 60 Hz 4P

Rated current : 81.9/40.9 A
LRC : 6.3
Rated torque : 89.3 ft.lb
Locked rotor torque : 250 %
Breakdown torque : 250 %
Rated speed : 1765 rpm

Moment of inertia (J) : 3.70 sq.ft.lb
Duty cycle : Cont.(S1)
Insulation class : F
Service factor : 1.15
Temperature rise : 80 K
Design : B

Rev.	Changes Summary	Performed	Checked	Date
Performed by		Page 3 / 6Revision		
Checked by				
Date	10/04/2020			

THERMAL LIMIT CURVE

Three Phase Induction Motor - Squirrel Cage



Customer :

Product line : W40 JP Pump High Efficiency
Three-Phase

Product code : 14829214

Catalog # : 03018OP3VFP286JPV-W4

Performance : 200/400 V 60 Hz 4P

Rated current : 81.9/40.9 A
LRC : 6.3
Rated torque : 89.3 ft.lb
Locked rotor torque : 250 %
Breakdown torque : 250 %
Rated speed : 1765 rpm

Moment of inertia (J) : 3.70 sq.ft.lb
Duty cycle : Cont.(S1)
Insulation class : F
Service factor : 1.15
Temperature rise : 80 K
Design : B

Heating constant

Cooling constant

Rev.

Changes Summary

Performed

Checked

Date

Performed by

Checked by

Date

10/04/2020

Page

4 / 6

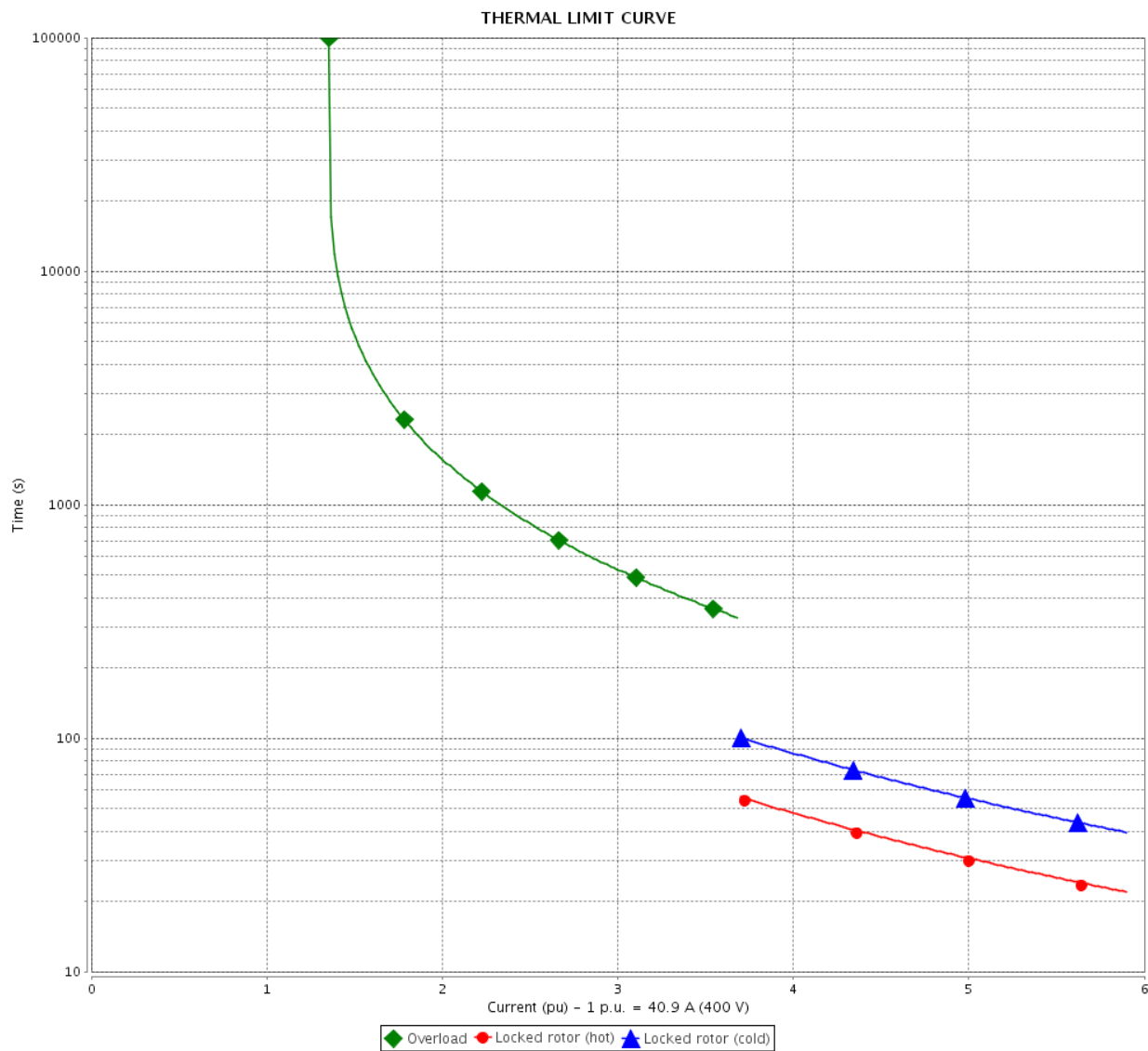
Revision

THERMAL LIMIT CURVE

Three Phase Induction Motor - Squirrel Cage



Customer : _____



Rev.	Changes Summary		Performed	Checked	Date
Performed by					
Checked by					
Date	10/04/2020				
			Page 5 / 6	Revision	

VFD OPERATION CURVE

Three Phase Induction Motor - Squirrel Cage

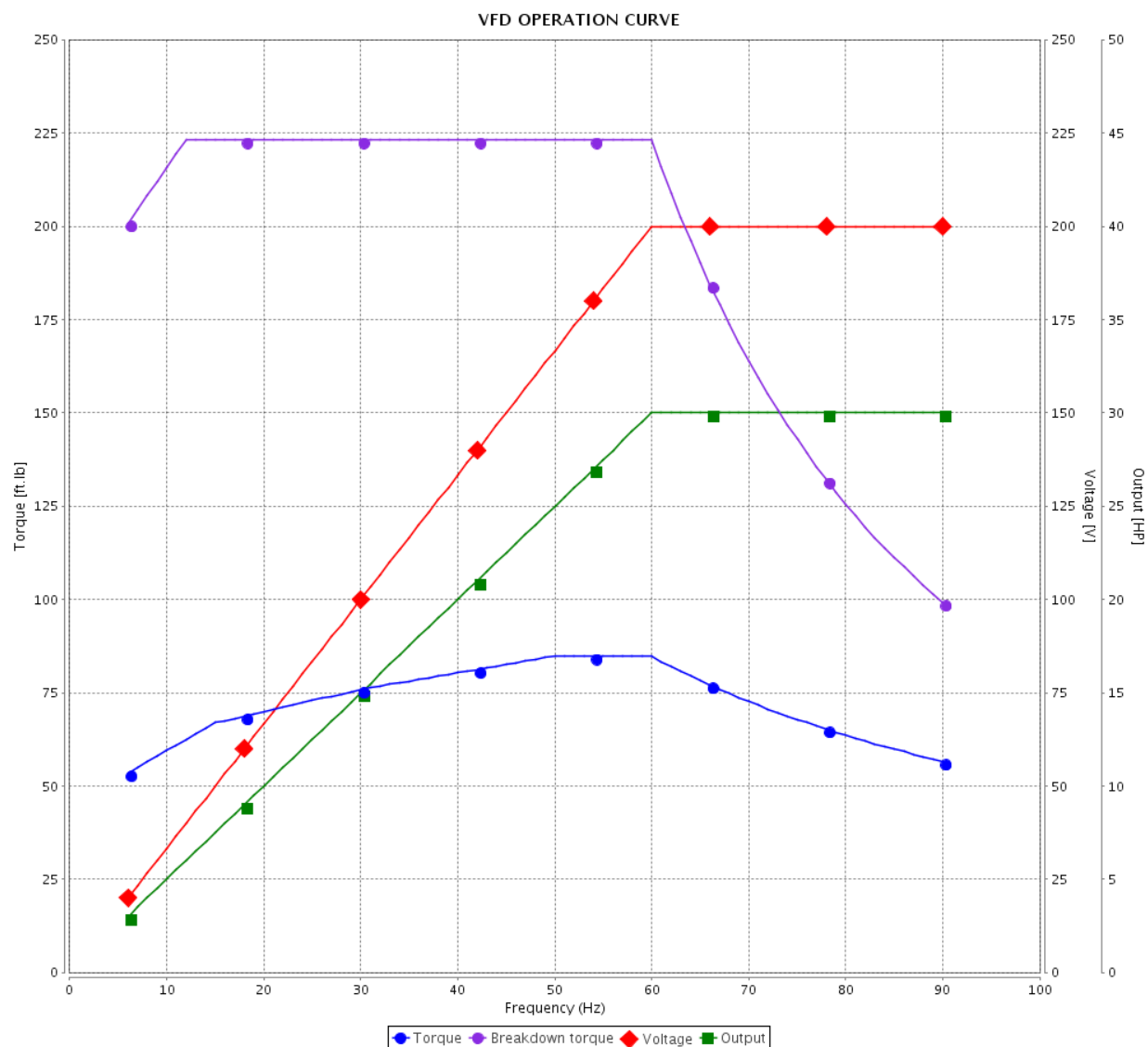


Customer :

Product line : W40 JP Pump High Efficiency
Three-Phase

Product code : 14829214

Catalog # : 03018OP3VFP286JPV-W4

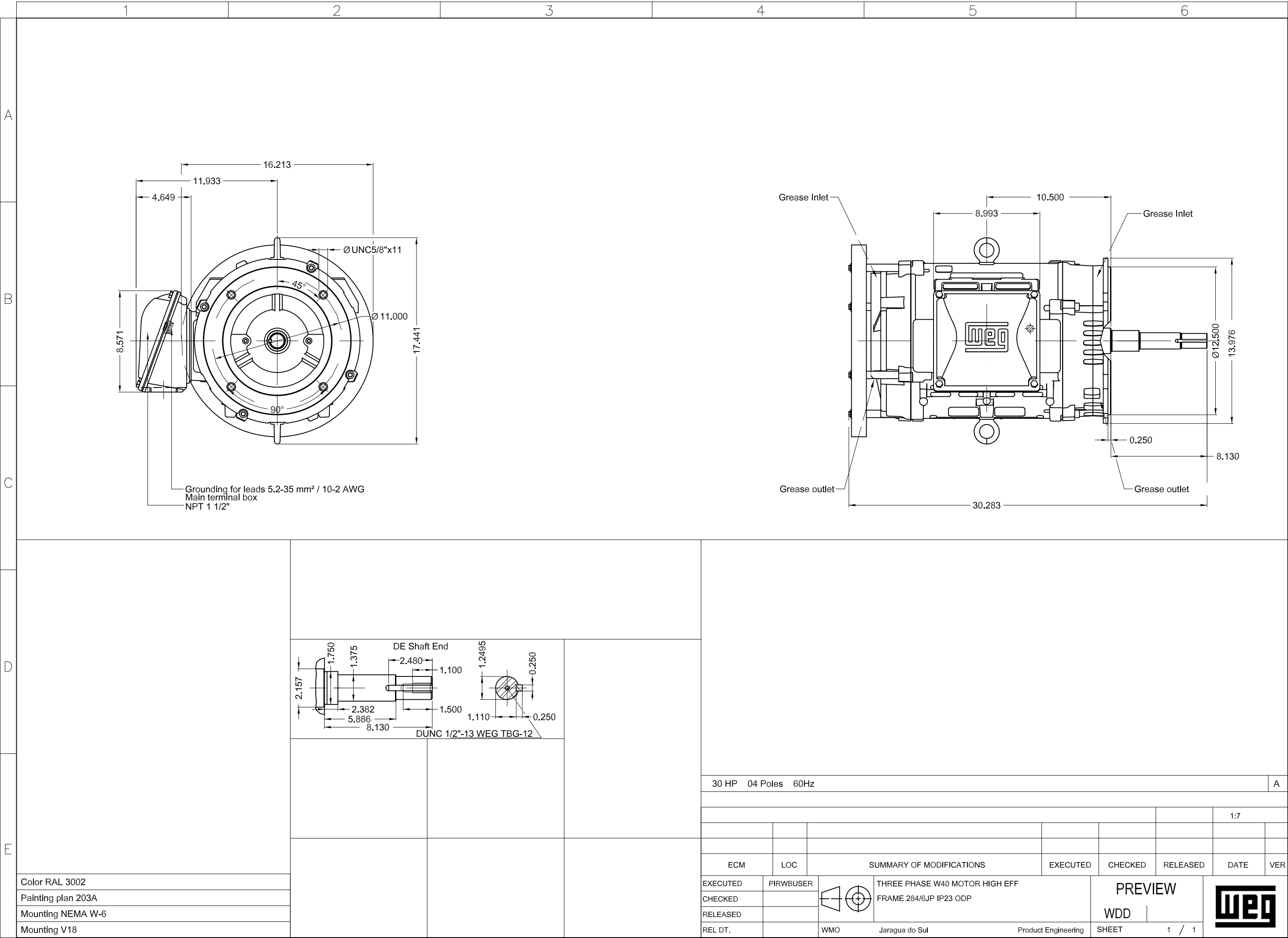


Performance : 200/400 V 60 Hz 4P

Rated current : 81.9/40.9 A
LRC : 6.3
Rated torque : 89.3 ft.lb
Locked rotor torque : 250 %
Breakdown torque : 250 %
Rated speed : 1765 rpm

Moment of inertia (J) : 3.70 sq.ft.lb
Duty cycle : Cont.(S1)
Insulation class : F
Service factor : 1.15
Temperature rise : 80 K
Design : B

Rev.	Changes Summary		Performed	Checked	Date
Performed by				Page	Revision
Checked by				6 / 6	
Date					



MODEL 030180P3VFP286JPV-W4
MADE IN BRAZIL
14829214



CC029A

Inverter Duty Motor



MOD.T01#FOX0H



For use on PWM, VT 1000:1, CT 3:1, 1.0SF

PH 3	FR 284/6JP	HP(kW) 30.0(22.0)	Hz 60		
V 200/400	A 81.9/40.9	IP23			
NEMA NOM EFF	92.4	%	RPM 1765	→ 6311-Z-C3 → 6211-Z-C3 <p>MOBIL POLYREX EM 18 g 20000 h</p>	
ENCL ODP	DUTY	CONT.	INS. CL. F ΔT 80 K		
PF 0.84	DES B	CODE F	AMB. 40°C	397 Lbs	
SF 1.15	SFA 94.2/47.0	ALT 1000 m.a.s.l.			