

DATA SHEET

Three Phase Induction Motor - Squirrel Cage



Customer :

Product line : Rolled Steel Jet Pump - J type Three-Phase Product code : 13521992
Catalog # : 00336ET3EJPR56J-S

Frame	: 56J	Locked rotor time	: 18s (cold) 10s (hot)
Output	: 3 HP (2.2 kW)	Temperature rise	: 80 K
Poles	: 2	Duty cycle	: Cont.(S1)
Frequency	: 60 Hz	Ambient temperature	: -20°C to +40°C
Rated voltage	: 230/460 V	Altitude	: 1000 m.a.s.l.
Rated current	: 7.02/3.51 A	Protection degree	: IP55
L. R. Amperes	: 66.7/33.3 A	Cooling method	: IC411 - TEFC
LRC	: 9.5x(Code K)	Mounting	: F-1
No load current	: 2.56/1.28 A	Rotation ¹	: CCW
Rated speed	: 3500 rpm	Noise level ²	: 68.0 dB(A)
Slip	: 2.78 %	Starting method	: Direct On Line
Rated torque	: 4.50 ft.lb	Approx. weight ³	: 47.9 lb
Locked rotor torque	: 300 %		
Breakdown torque	: 380 %		
Insulation class	: F		
Service factor	: 1.15		
Moment of inertia (J)	: 0.1663 sq.ft.lb		
Design	: B		

Output	25%	50%	75%	100%	Foundation loads	
Efficiency (%)	83.6	84.0	86.5	86.5	Max. traction	: 158 lb
Power Factor	0.51	0.78	0.87	0.91	Max. compression	: 206 lb

		Drive end	Non drive end
Bearing type	:	6203 2RS	6202 2RS
Sealing	:	V'Ring	V'Ring
Lubrication interval	:	-	-
Lubricant amount	:	-	-
Lubricant type	:	Mobil Polyrex EM	

Notes
USABLE @208V 7.76A SF 1.00 SFA 7.76A

This revision replaces and cancel the previous one, which must be eliminated.

- (1) Looking the motor from the shaft end.
- (2) Measured at 1m and with tolerance of +3dB(A).
- (3) Approximate weight subject to changes after manufacturing process.
- (4) At 100% of full load.

These are average values based on tests with sinusoidal power supply, subject to the tolerances stipulated in NEMA MG-1.

Rev.	Changes Summary	Performed	Checked	Date
Performed by		Page Revision 1 / 6		
Checked by				
Date	10/04/2020			

TORQUE AND CURRENT VS SPEED CURVE

Three Phase Induction Motor - Squirrel Cage



Customer :

Product line

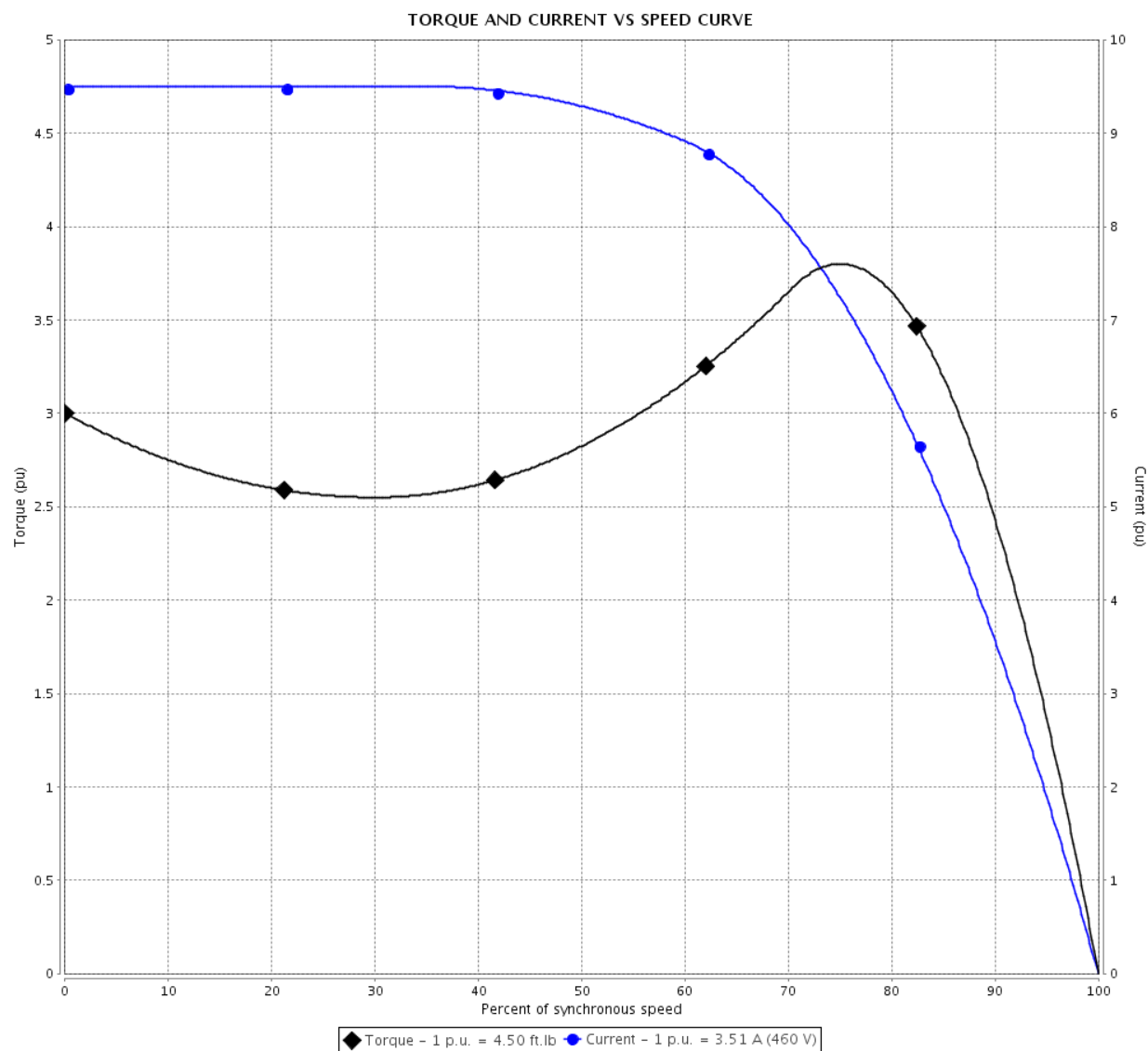
: Rolled Steel Jet Pump - J type
Three-Phase

Product code :

13521992

Catalog # :

00336ET3EJPR56J-S



Performance : 230/460 V 60 Hz 2P

Rated current : 7.02/3.51 A
LRC : 9.5
Rated torque : 4.50 ft.lb
Locked rotor torque : 300 %
Breakdown torque : 380 %
Rated speed : 3500 rpm

Moment of inertia (J) : 0.1663 sq.ft.lb
Duty cycle : Cont.(S1)
Insulation class : F
Service factor :
Temperature rise : 80 K
Design : B

Locked rotor time : 18s (cold) 10s (hot)

Rev.	Changes Summary	Performed	Checked	Date
Performed by		<div>Page</div> <div>2 / 6</div> <div>Revision</div>		
Checked by				
Date	10/04/2020			

LOAD PERFORMANCE CURVE

Three Phase Induction Motor - Squirrel Cage

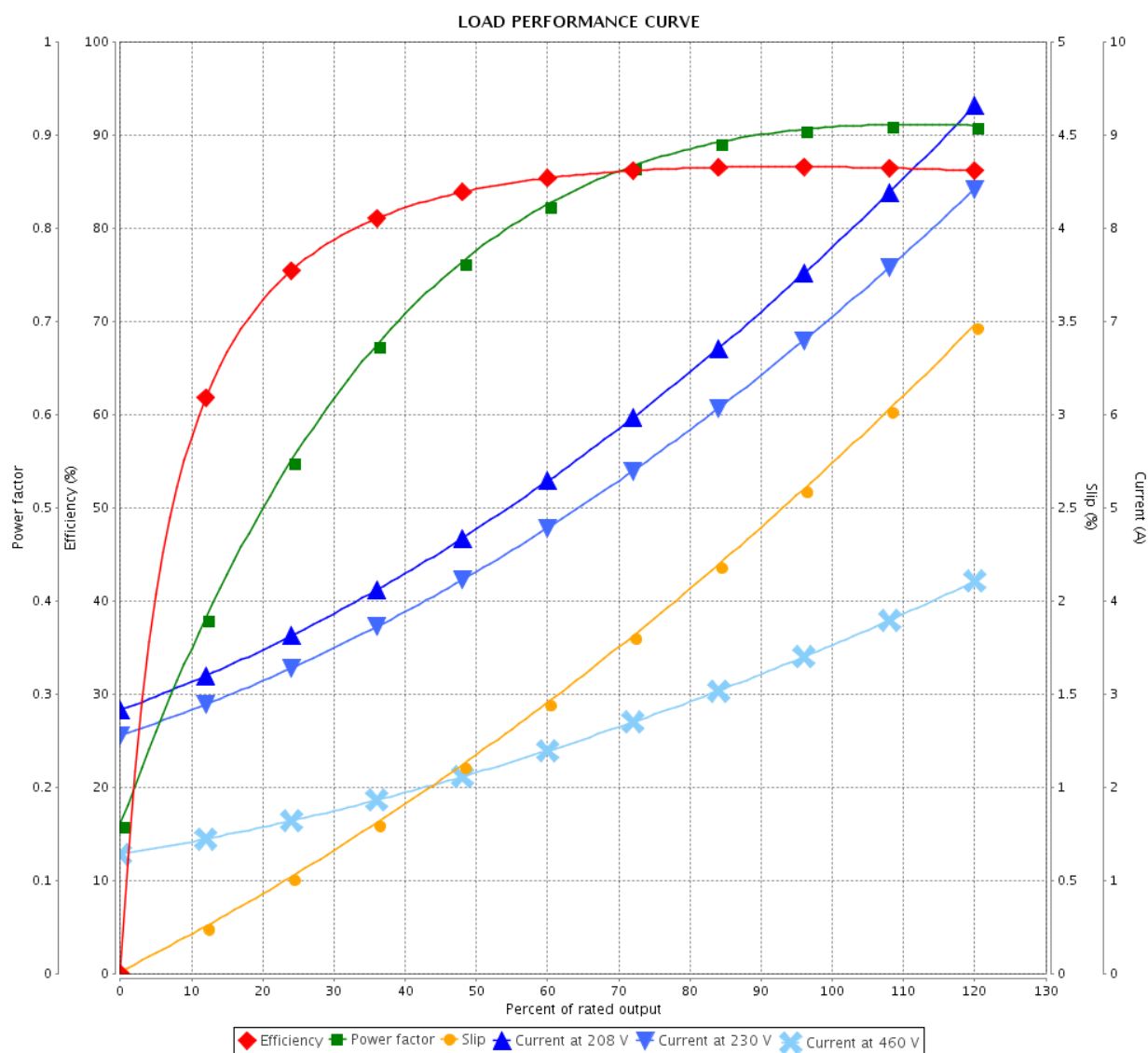


Customer :

Product line : Rolled Steel Jet Pump - J type
Three-Phase

Product code : 13521992

Catalog # : 00336ET3EJPR56J-S



Performance : 230/460 V 60 Hz 2P

Rated current : 7.02/3.51 A
LRC : 9.5
Rated torque : 4.50 ft.lb
Locked rotor torque : 300 %
Breakdown torque : 380 %
Rated speed : 3500 rpm

Moment of inertia (J) : 0.1663 sq.ft.lb
Duty cycle : Cont.(S1)
Insulation class : F
Service factor :
Temperature rise : 80 K
Design : B

Rev.	Changes Summary	Performed	Checked	Date
Performed by		Page 3 / 6Revision		
Checked by				
Date	10/04/2020			

THERMAL LIMIT CURVE

Three Phase Induction Motor - Squirrel Cage



Customer :

Product line : Rolled Steel Jet Pump - J type
Three-Phase

Product code : 13521992

Catalog # : 00336ET3EJPR56J-S

Performance : 230/460 V 60 Hz 2P

Rated current : 7.02/3.51 A
LRC : 9.5
Rated torque : 4.50 ft.lb
Locked rotor torque : 300 %
Breakdown torque : 380 %
Rated speed : 3500 rpm

Moment of inertia (J) : 0.1663 sq.ft.lb
Duty cycle : Cont.(S1)
Insulation class : F
Service factor :
Temperature rise : 80 K
Design : B

Heating constant

Cooling constant

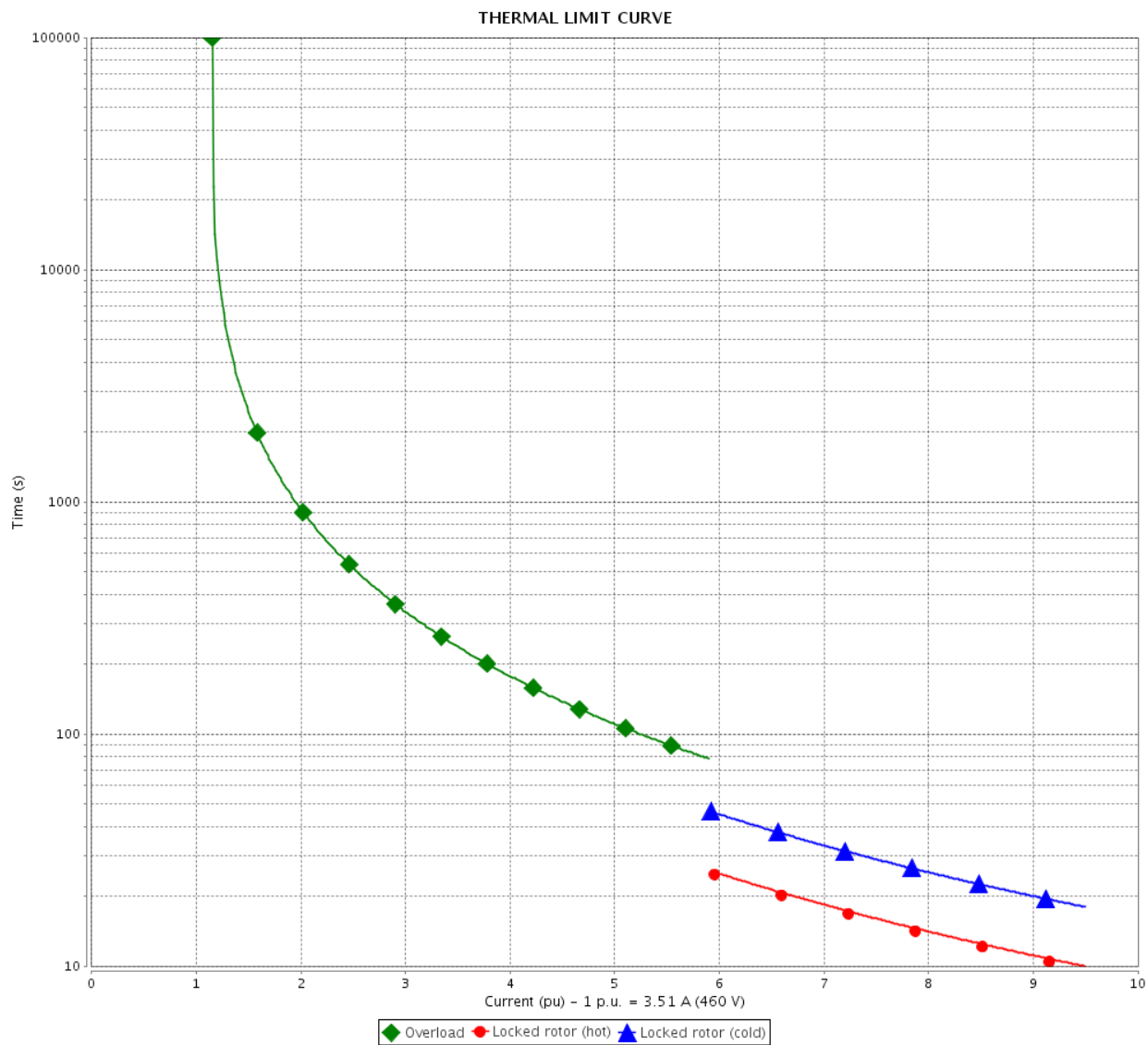
Rev.	Changes Summary		Performed	Checked	Date
Performed by				Page	Revision
Checked by					
Date	10/04/2020			4 / 6	

THERMAL LIMIT CURVE

Three Phase Induction Motor - Squirrel Cage



Customer : _____



Rev.	Changes Summary		Performed	Checked	Date
Performed by					
Checked by					
Date	10/04/2020				
				Page 5 / 6	Revision

VFD OPERATION CURVE

Three Phase Induction Motor - Squirrel Cage

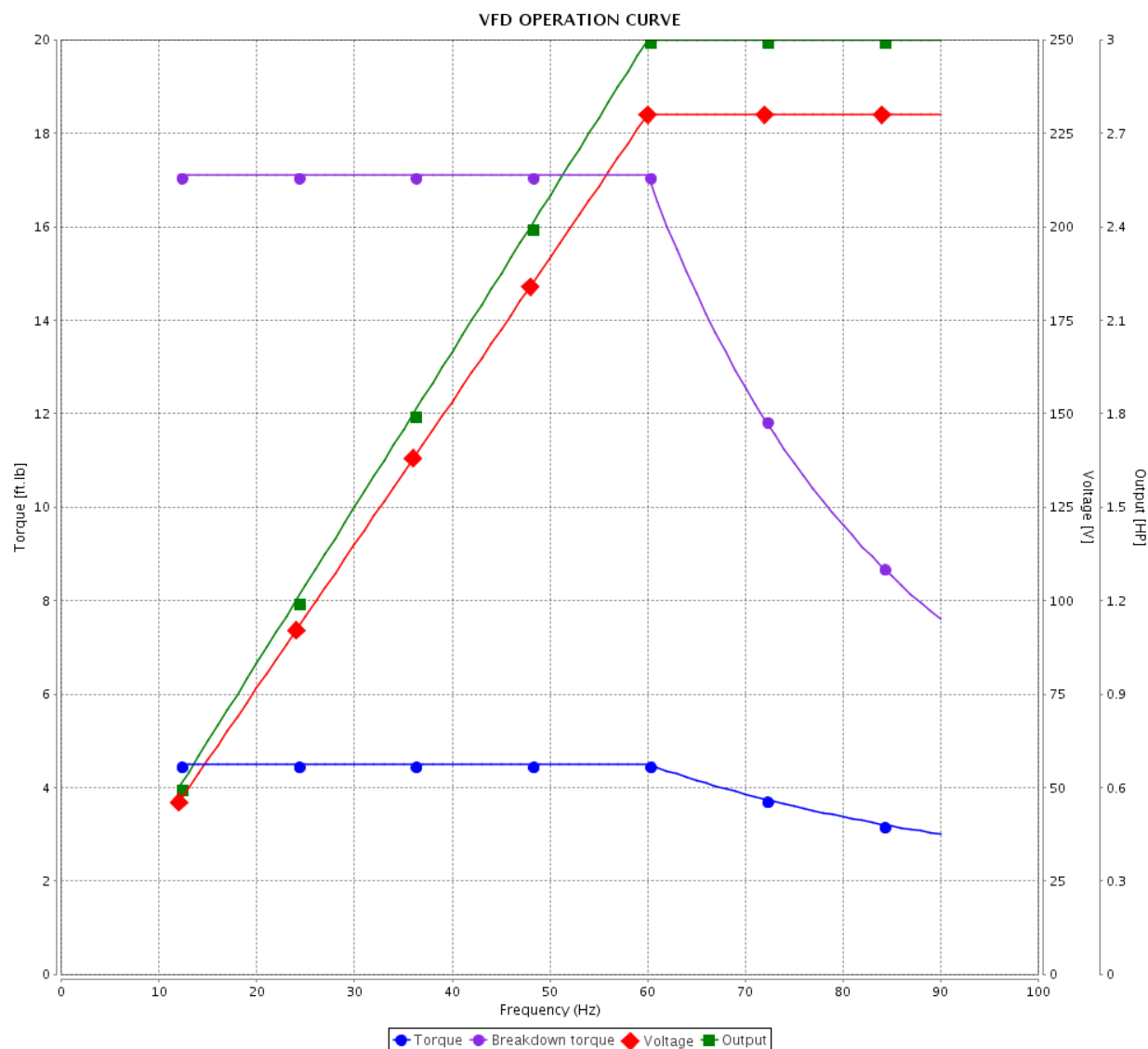


Customer :

Product line : Rolled Steel Jet Pump - J type
Three-Phase

Product code : 13521992

Catalog # : 00336ET3EJPR56J-S

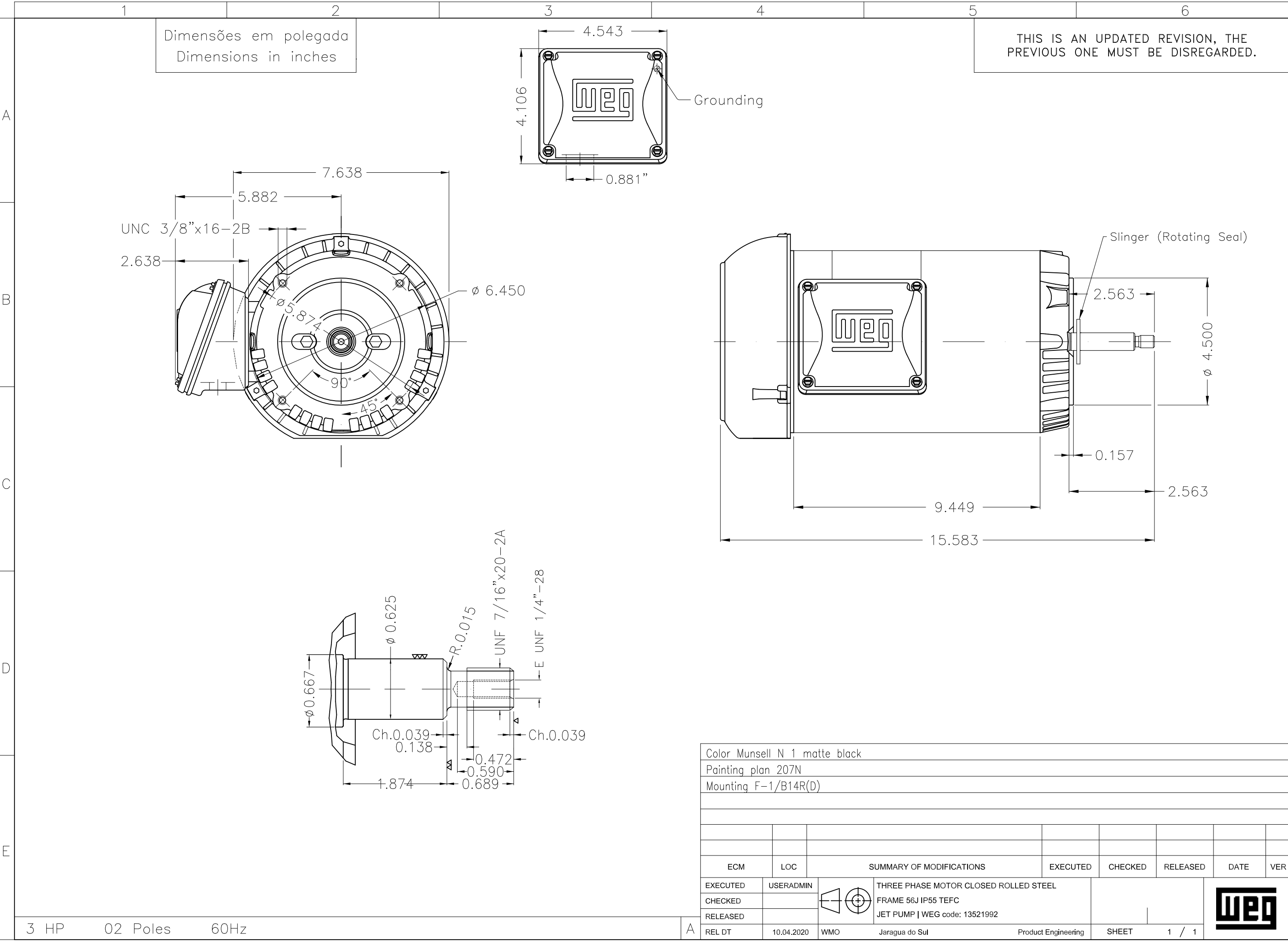


Performance : 230/460 V 60 Hz 2P

Rated current : 7.02/3.51 A
LRC : 9.5
Rated torque : 4.50 ft.lb
Locked rotor torque : 300 %
Breakdown torque : 380 %
Rated speed : 3500 rpm

Moment of inertia (J) : 0.1663 sq.ft.lb
Duty cycle : Cont.(S1)
Insulation class : F
Service factor :
Temperature rise : 80 K
Design : B

Rev.	Changes Summary		Performed	Checked	Date
Performed by				Page 6 / 6	Revision
Checked by					
Date	10/04/2020				





NEMA
Premium

UL C³PT9
US LISTED
FOR SAFE AREA

SP C³PT9
US
Energy Verified

MADE IN MEXICO

MAT: 13521992 CC029A

W01.TE0IC0X0X

MODEL 00336ET3EJPR56J-S

15ABR2019

For 60Hz: Class I, Zone 2, IIC
Class I, Div.2, Gr. A,B,C,D - T3

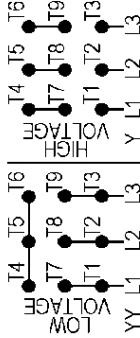
Div 2 Inverter Duty (SF1.00)

CT 2:1/VT 1000:1

PH 3	FR	56J	HP(KW) 3.0(2.2)	Hz	60
V 230/460			RPM 3500		
A 7.02/3.51			DUTY CONT.		
SFA 8.07/4.04			CODE K	DES B	IP55
SF 1.15	INS CL F	AT 80K	AMB 40°C	ENCL	TEFC
PF 0.91			NEMA NOM.EFF. 86.5%		

ALT 1000 m.a.s.l. USABLE @ 208V 7.76A SF1.00

ALTERNATE RATING: 3.0HP 50Hz 190-220/380-415V SF1.15
8.50-7.38/4.25-3.91A 2870RPM EFF 84.6% (IE2) IEC 60034-1



T1-BLU T2-WHT
T3-ORG T4-YEL
T5-BLK T6-GRY
T7-PNK T8-RED
T9-RED BRK

For safe area-Inverter duty For 60Hz use on VPWM 1000:1 VT, 5:1 CT

DE: 6203-2RS ODE: 6202-2RS MOBIL POLYREX EM

WARNING: Motor must be grounded in accordance with local and national electrical codes to prevent serious electrical shocks. Disconnect power source before servicing unit.

AVERTISSEMENT: Le moteur doit être mis à la terre conformément aux codes électriques locaux et nationaux afin d'éviter tout choc électrique grave. Déconnectez l'alimentation avant l'entretien de la machine.

