

DATA SHEET

Three Phase Induction Motor - Squirrel Cage



Customer :

Product line : W40 JP Pump High Efficiency
Three-Phase

Product code : 14830338

Catalog # : 05036OP3VFP324JPV-W4

Frame : 324/6JP
Output : 50 HP (37 kW)
Poles : 2
Frequency : 60 Hz
Rated voltage : 200/400 V
Rated current : 134/67.2 A
L. R. Amperes : 779/390 A
LRC : 5.8x(Code F)
No load current : 38.9/19.4 A
Rated speed : 3555 rpm
Slip : 1.25 %
Rated torque : 73.9 ft.lb
Locked rotor torque : 170 %
Breakdown torque : 200 %
Insulation class : F
Service factor : 1.15
Moment of inertia (J) : 3.01 sq.ft.lb
Design : B

Locked rotor time : 36s (cold) 20s (hot)
Temperature rise : 80 K
Duty cycle : Cont.(S1)
Ambient temperature : -20°C to +40°C
Altitude : 1000 m.a.s.l.
Protection degree : IP23
Cooling method : IC01 - ODP
Mounting : W-6
Rotation¹ : Both (CW and CCW)
Starting method : Direct On Line
Approx. weight³ : 443 lb

Output	25%	50%	75%	100%
Efficiency (%)	91.5	91.7	92.4	92.4
Power Factor	0.54	0.78	0.84	0.86

Foundation loads
Max. traction
Max. compression

	Drive end	Non drive end
Bearing type :	6312 Z C3	6211 Z C3
Sealing :	Without Bearing Seal	Without Bearing Seal
Lubrication interval :	9829 h	14226 h
Lubricant amount :	21 g	11 g
Lubricant type :	Mobil Polyrex EM	

Notes

This revision replaces and cancel the previous one, which must be eliminated.

- (1) Looking the motor from the shaft end.
- (2) Measured at 1m and with tolerance of +3dB(A).
- (3) Approximate weight subject to changes after manufacturing process.
- (4) At 100% of full load.

These are average values based on tests with sinusoidal power supply, subject to the tolerances stipulated in NEMA MG-1.

Rev.	Changes Summary	Performed	Checked	Date
Performed by		Page 1 / 6 Revision		
Checked by				
Date	13/04/2020			

TORQUE AND CURRENT VS SPEED CURVE

Three Phase Induction Motor - Squirrel Cage

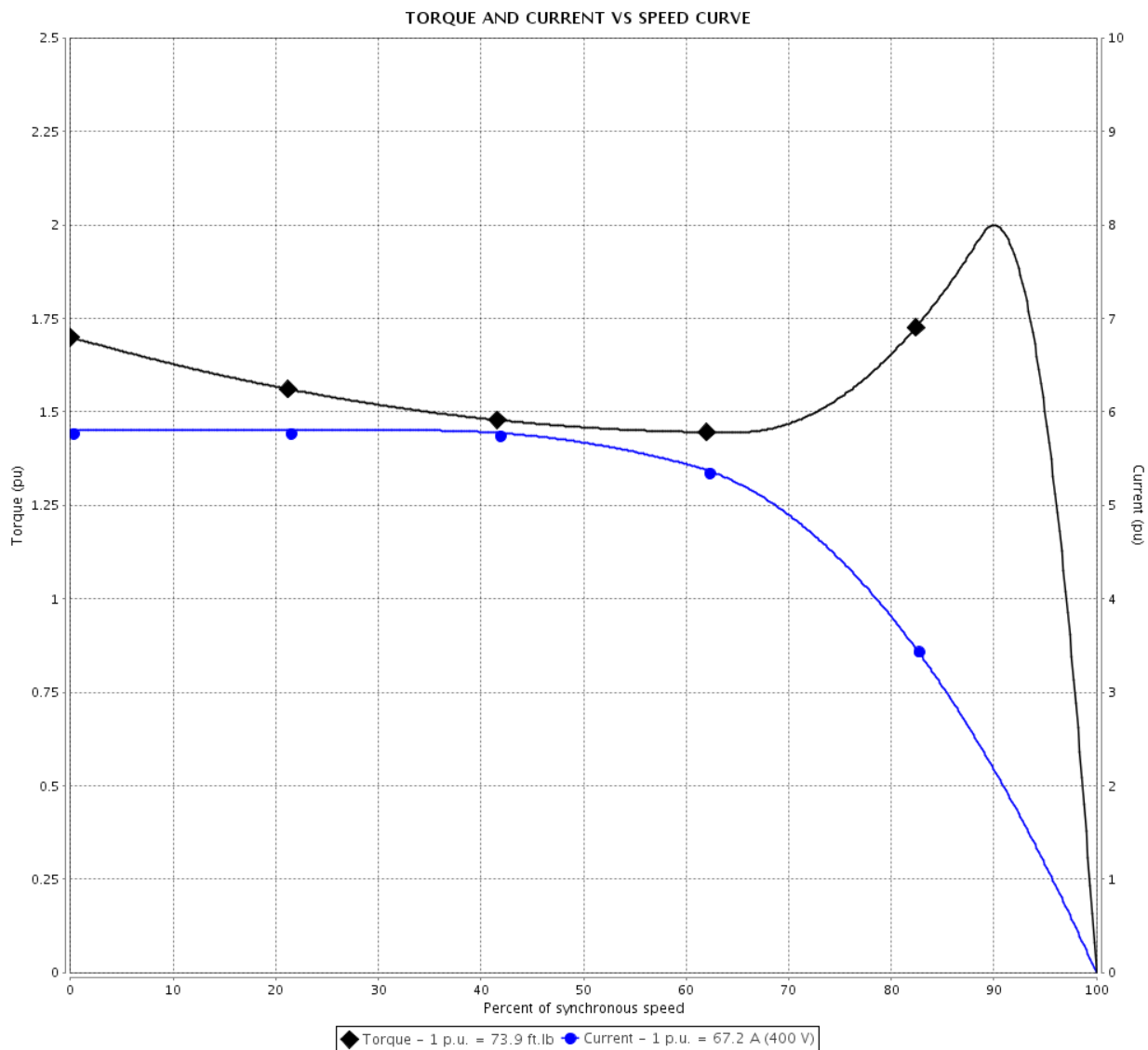


Customer :

Product line : W40 JP Pump High Efficiency
Three-Phase

Product code : 14830338

Catalog # : 05036OP3VFP324JPV-W4



Performance : 200/400 V 60 Hz 2P

Rated current : 134/67.2 A
LRC : 5.8
Rated torque : 73.9 ft.lb
Locked rotor torque : 170 %
Breakdown torque : 200 %
Rated speed : 3555 rpm

Moment of inertia (J) : 3.01 sq.ft.lb
Duty cycle : Cont.(S1)
Insulation class : F
Service factor : 1.15
Temperature rise : 80 K
Design : B

Locked rotor time : 36s (cold) 20s (hot)

Rev.	Changes Summary	Performed	Checked	Date
Performed by		<div>Page 2 / 6</div> <div>Revision</div>		
Checked by				
Date	13/04/2020			

LOAD PERFORMANCE CURVE

Three Phase Induction Motor - Squirrel Cage

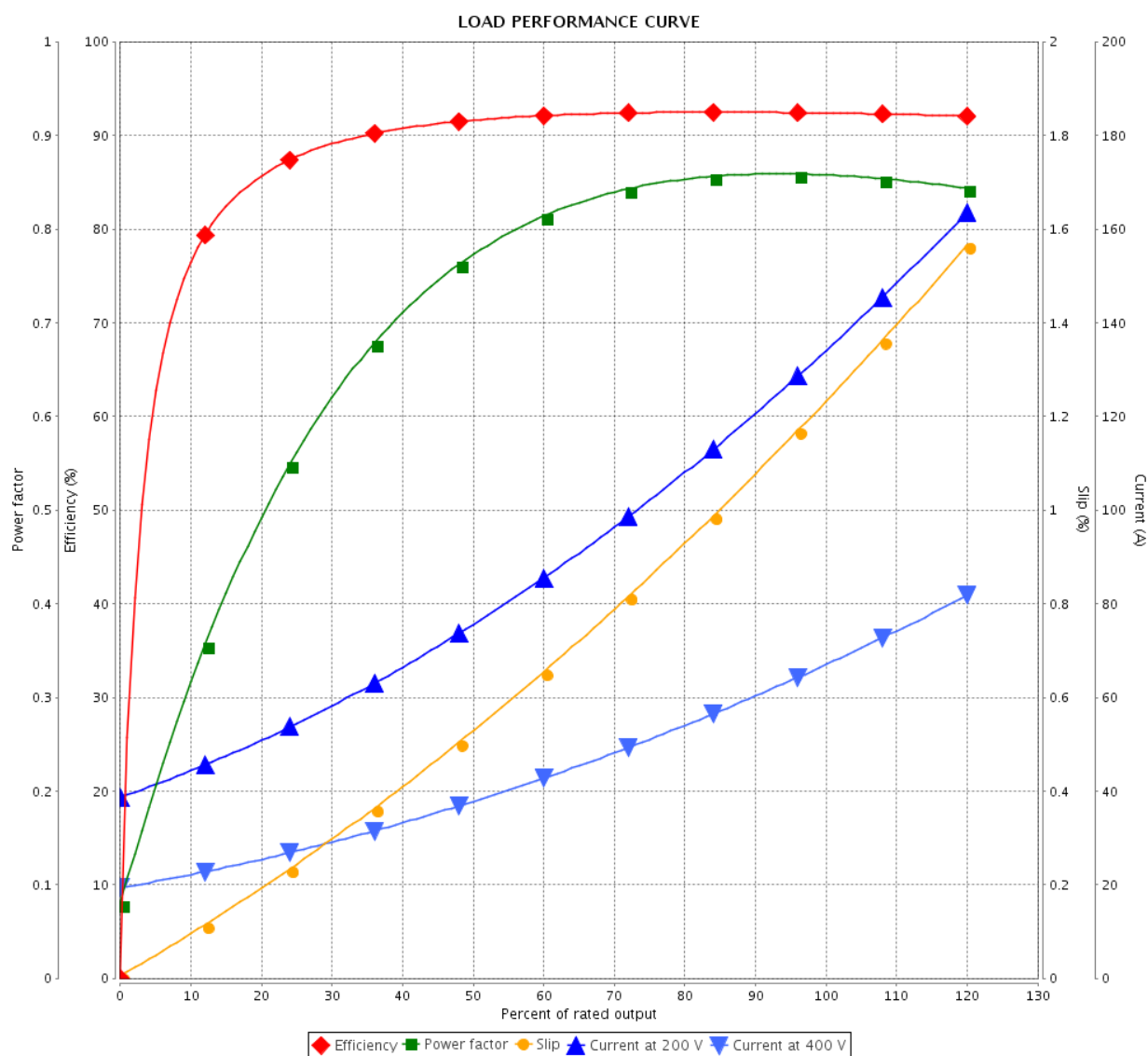


Customer :

Product line : W40 JP Pump High Efficiency
Three-Phase

Product code : 14830338

Catalog # : 05036OP3VFP324JPV-W4



Performance : 200/400 V 60 Hz 2P

Rated current : 134/67.2 A
LRC : 5.8
Rated torque : 73.9 ft.lb
Locked rotor torque : 170 %
Breakdown torque : 200 %
Rated speed : 3555 rpm

Moment of inertia (J) : 3.01 sq.ft.lb
Duty cycle : Cont.(S1)
Insulation class : F
Service factor : 1.15
Temperature rise : 80 K
Design : B

Rev.	Changes Summary	Performed	Checked	Date
Performed by		Page 3 / 6Revision		
Checked by				
Date	13/04/2020			

THERMAL LIMIT CURVE

Three Phase Induction Motor - Squirrel Cage



Customer

:

Product line

: W40 JP Pump High Efficiency
Three-Phase

Product code :

14830338

Catalog # :

05036OP3VFP324JPV-W4

Performance : 200/400 V 60 Hz 2P

Rated current : 134/67.2 A

LRC : 5.8

Rated torque : 73.9 ft.lb

Locked rotor torque : 170 %

Breakdown torque : 200 %

Rated speed : 3555 rpm

Moment of inertia (J) : 3.01 sq.ft.lb

Duty cycle : Cont.(S1)

Insulation class : F

Service factor : 1.15

Temperature rise : 80 K

Design : B

Heating constant

Cooling constant

Rev.

Changes Summary

Performed

Checked

Date

Performed by

Checked by

Date

13/04/2020

Page

4 / 6

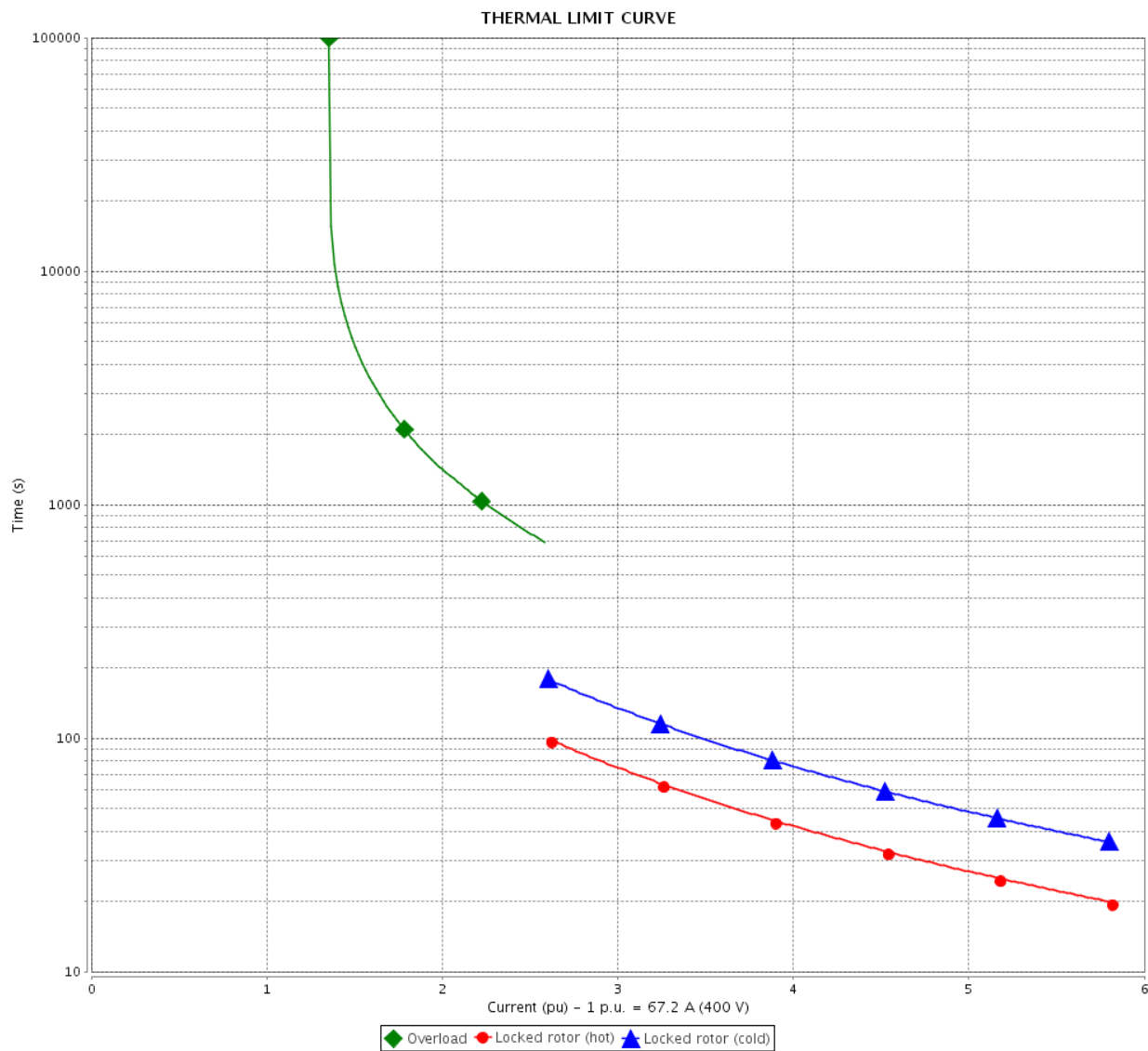
Revision

THERMAL LIMIT CURVE

Three Phase Induction Motor - Squirrel Cage



Customer : _____



Rev.	Changes Summary		Performed	Checked	Date
Performed by					Page 5 / 6
Checked by					
Date	13/04/2020				
					Revision

VFD OPERATION CURVE

Three Phase Induction Motor - Squirrel Cage

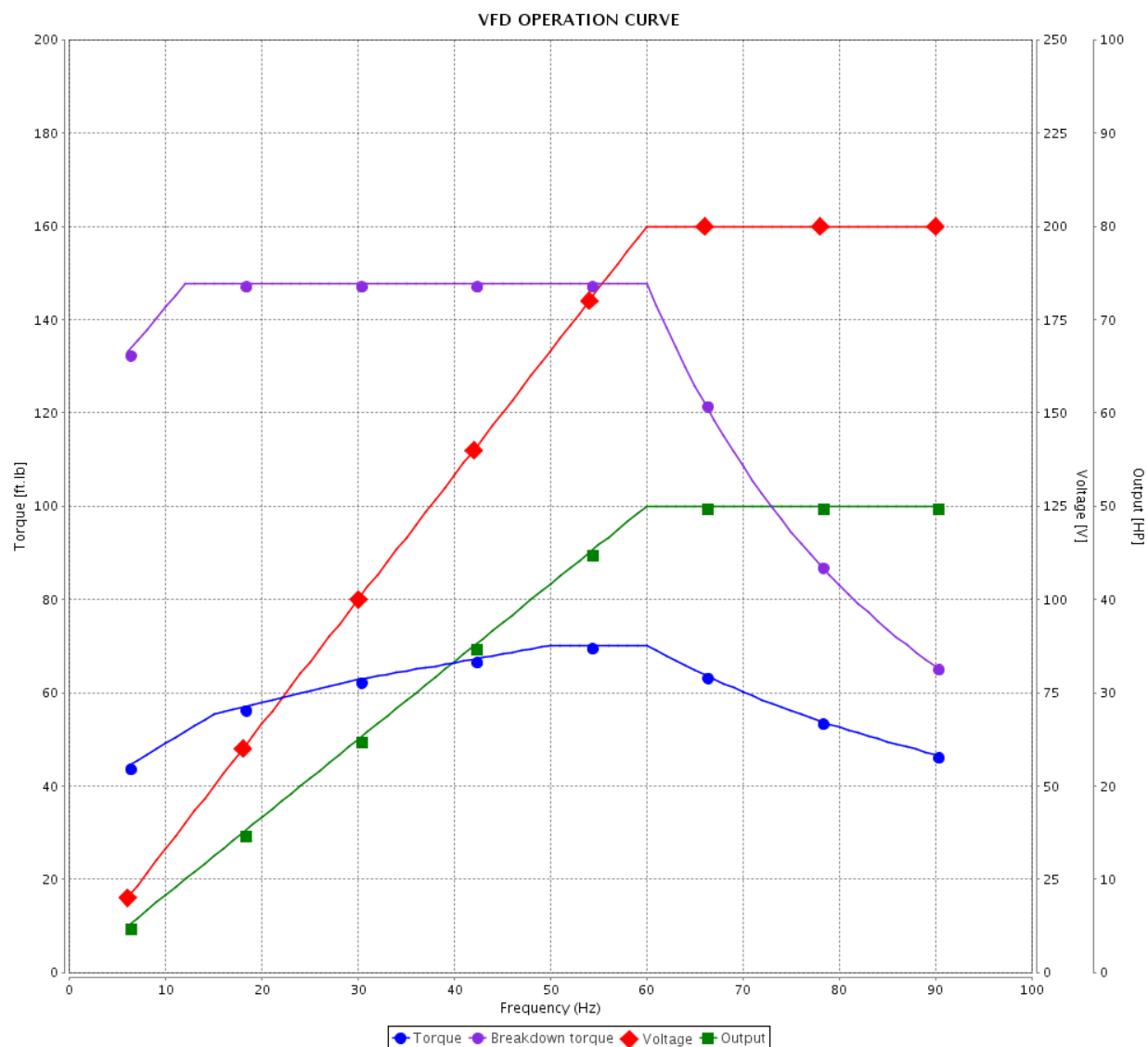


Customer :

Product line : W40 JP Pump High Efficiency
Three-Phase

Product code : 14830338

Catalog # : 05036OP3VFP324JPV-W4

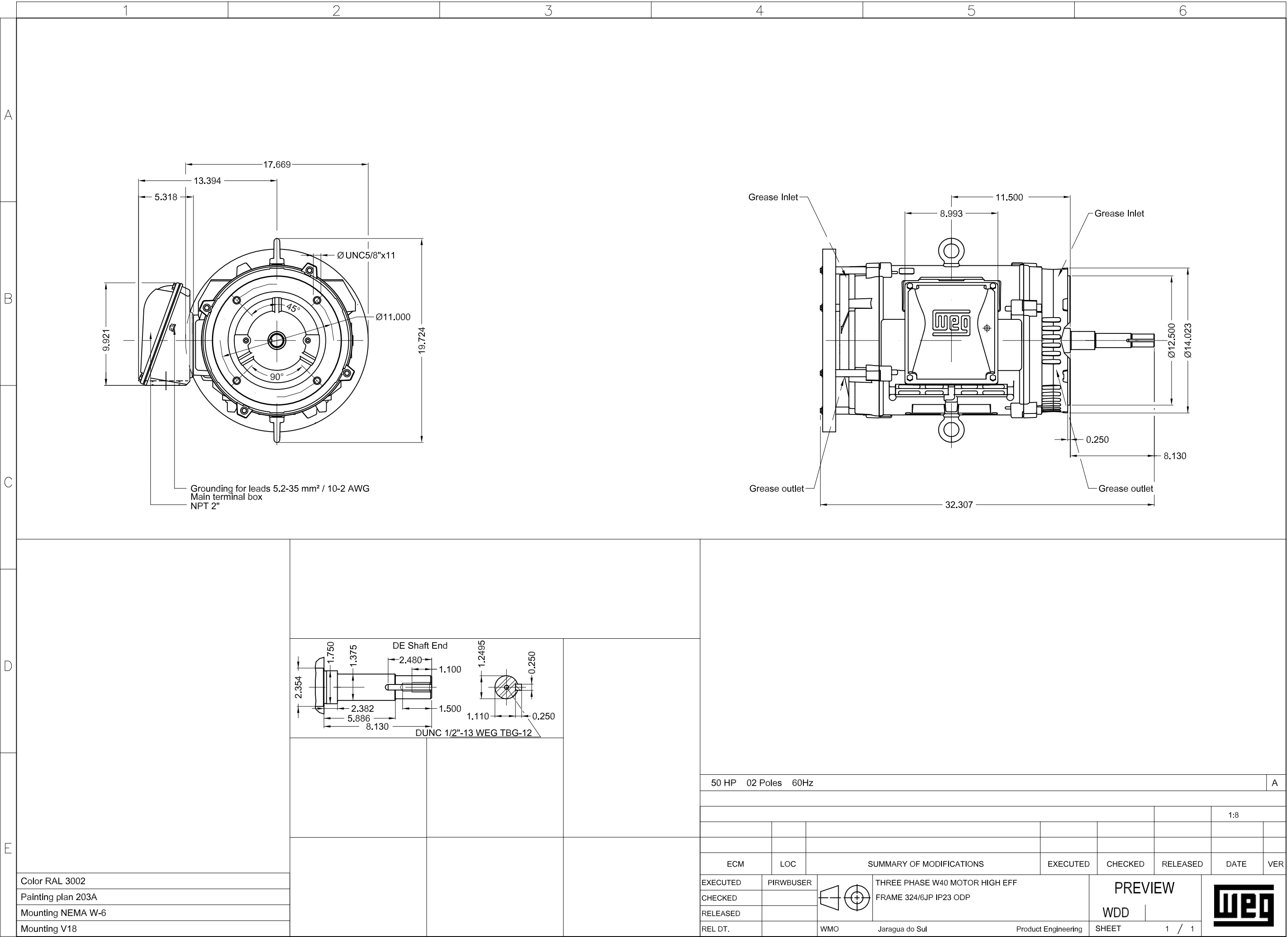


Performance : 200/400 V 60 Hz 2P

Rated current : 134/67.2 A
LRC : 5.8
Rated torque : 73.9 ft.lb
Locked rotor torque : 170 %
Breakdown torque : 200 %
Rated speed : 3555 rpm

Moment of inertia (J) : 3.01 sq.ft.lb
Duty cycle : Cont.(S1)
Insulation class : F
Service factor : 1.15
Temperature rise : 80 K
Design : B

Rev.	Changes Summary		Performed	Checked	Date
Performed by				Page 6 / 6	Revision
Checked by					
Date	13/04/2020				



MODEL 050360P3VFP324JPV-W4
MADE IN BRAZIL
14830338



CC029A

Inverter Duty Motor



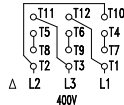
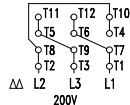
MOD.T01#FOX0H



C US
Energy Verified

For use on PWM, VT 1000:1, CT 3:1, 1.0SF

PH 3	FR 324/6JP	HP(kW) 50.0(37.0)	Hz 60
V 200/400	A 134/67.2	IP23	
NEMA NOM EFF	92.4 %	RPM 3555	
ENCL ODP	DUTY CONT.	INS. CL. F ΔT 80 K	
PF 0.86	DES B	CODE F	AMB. 40°C
SF 1.15	SFA 154/77.3	ALT 1000 m.a.s.l.	



→ 6312-Z-C3
→ 6211-Z-C3

MOBIL POLYREX EM
21 g 9829 h

443 Lbs