

DATA SHEET

Three Phase Induction Motor - Squirrel Cage



Customer :				
Product line : Rolled Steel Three-Phase		Product code : 13590821 Catalog # : 00118ET3EBM56C-S		
Frame : 56C Output : 1 HP (0.75 kW) Poles : 4 Frequency : 60 Hz Rated voltage : 230/460 V Rated current : 2.94/1.47 A L. R. Amperes : 25.3/12.6 A LRC : 8.6x(Code M) No load current : 1.78/0.890 A Rated speed : 1765 rpm Slip : 1.94 % Rated torque : 2.98 ft.lb Locked rotor torque : 280 % Breakdown torque : 300 % Insulation class : F Service factor : 1.15 Moment of inertia (J) : 0.1232 sq.ft.lb Design : B		Locked rotor time : 34s (cold) 19s (hot) Temperature rise : 80 K Duty cycle : Cont.(S1) Ambient temperature : -20°C to +40°C Altitude : 1000 m.a.s.l. Protection degree : IP55 Cooling method : IC411 - TEFC Mounting : F-1 Rotation ¹ : Both (CW and CCW) Noise level ² : 52.0 dB(A) Starting method : Direct On Line Approx. weight ³ : 48.4 lb		
Output	50%	75%	100%	Foundation loads Max. traction : 92 lb Max. compression : 141 lb
Efficiency (%)	82.5	84.0	85.5	
Power Factor	0.52	0.66	0.75	
		<u>Drive end</u>	<u>Non drive end</u>	
Bearing type	:	6204 ZZ	6203 ZZ	
Sealing	:	V'Ring	V'Ring	
Lubrication interval	:	-	-	
Lubricant amount	:	-	-	
Lubricant type	:	Mobil Polyrex EM		
Notes USABLE @208V 3.25A SF 1.00 SFA 3.25A				
This revision replaces and cancel the previous one, which must be eliminated. (1) Looking the motor from the shaft end. (2) Measured at 1m and with tolerance of +3dB(A). (3) Approximate weight subject to changes after manufacturing process. (4) At 100% of full load.			These are average values based on tests with sinusoidal power supply, subject to the tolerances stipulated in NEMA MG-1.	
Rev.	Changes Summary		Performed	Checked
Performed by				
Checked by			Page	Revision
Date	10/04/2020		1 / 6	

DATA SHEET

Three Phase Induction Motor - Squirrel Cage



Customer :

Brake information

Voltage: 208-230/460//190/380 V
Brake Torque: 5.90 ft.lb

Rev.	Changes Summary		Performed	Checked	Date
Performed by			Page 2 / 6		Revision
Checked by					
Date	10/04/2020				

TORQUE AND CURRENT VS SPEED CURVE

Three Phase Induction Motor - Squirrel Cage



Customer :

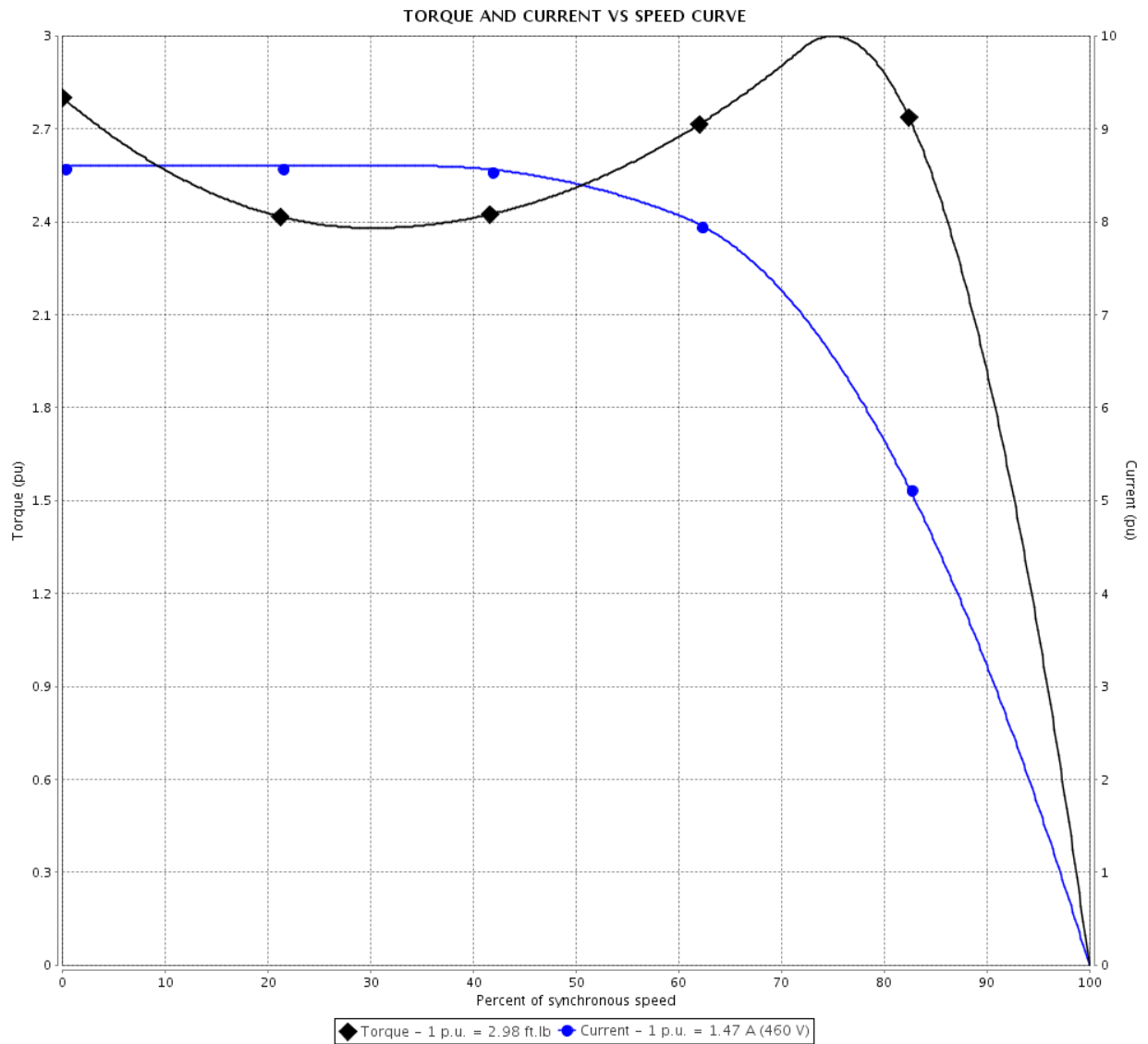
Product line : Rolled Steel Three-Phase

Product code :

13590821

Catalog # :

00118ET3EBM56C-S



Performance : 230/460 V 60 Hz 4P

Rated current : 2.94/1.47 A
 LRC : 8.6
 Rated torque : 2.98 ft.lb
 Locked rotor torque : 280 %
 Breakdown torque : 300 %
 Rated speed : 1765 rpm

Moment of inertia (J) : 0.1232 sq.ft.lb
 Duty cycle : Cont.(S1)
 Insulation class : F
 Service factor :
 Temperature rise : 80 K
 Design : B

Locked rotor time : 34s (cold) 19s (hot)

Rev.	Changes Summary	Performed	Checked	Date
Performed by		Page 3 / 6		
Checked by				
Date	10/04/2020			
		Revision		

LOAD PERFORMANCE CURVE

Three Phase Induction Motor - Squirrel Cage



Customer :

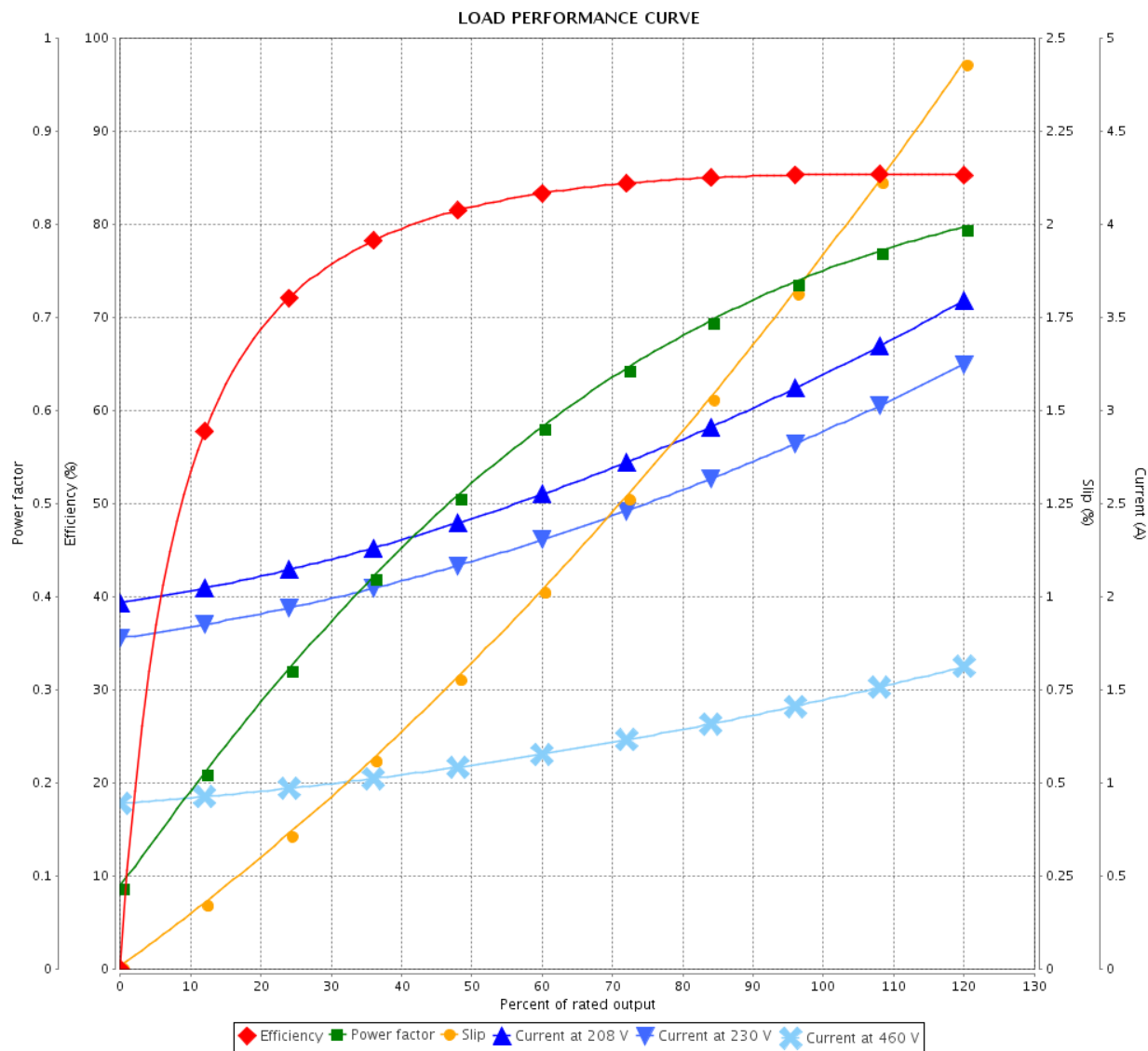
Product line : Rolled Steel Three-Phase

Product code :

13590821

Catalog # :

00118ET3EBM56C-S



Performance : 230/460 V 60 Hz 4P

Rated current : 2.94/1.47 A
 LRC : 8.6
 Rated torque : 2.98 ft.lb
 Locked rotor torque : 280 %
 Breakdown torque : 300 %
 Rated speed : 1765 rpm

Moment of inertia (J) : 0.1232 sq.ft.lb
 Duty cycle : Cont.(S1)
 Insulation class : F
 Service factor :
 Temperature rise : 80 K
 Design : B

Rev.	Changes Summary		Performed	Checked	Date
Performed by				Page 4 / 6	Revision
Checked by					
Date	10/04/2020				

THERMAL LIMIT CURVE

Three Phase Induction Motor - Squirrel Cage



Customer :

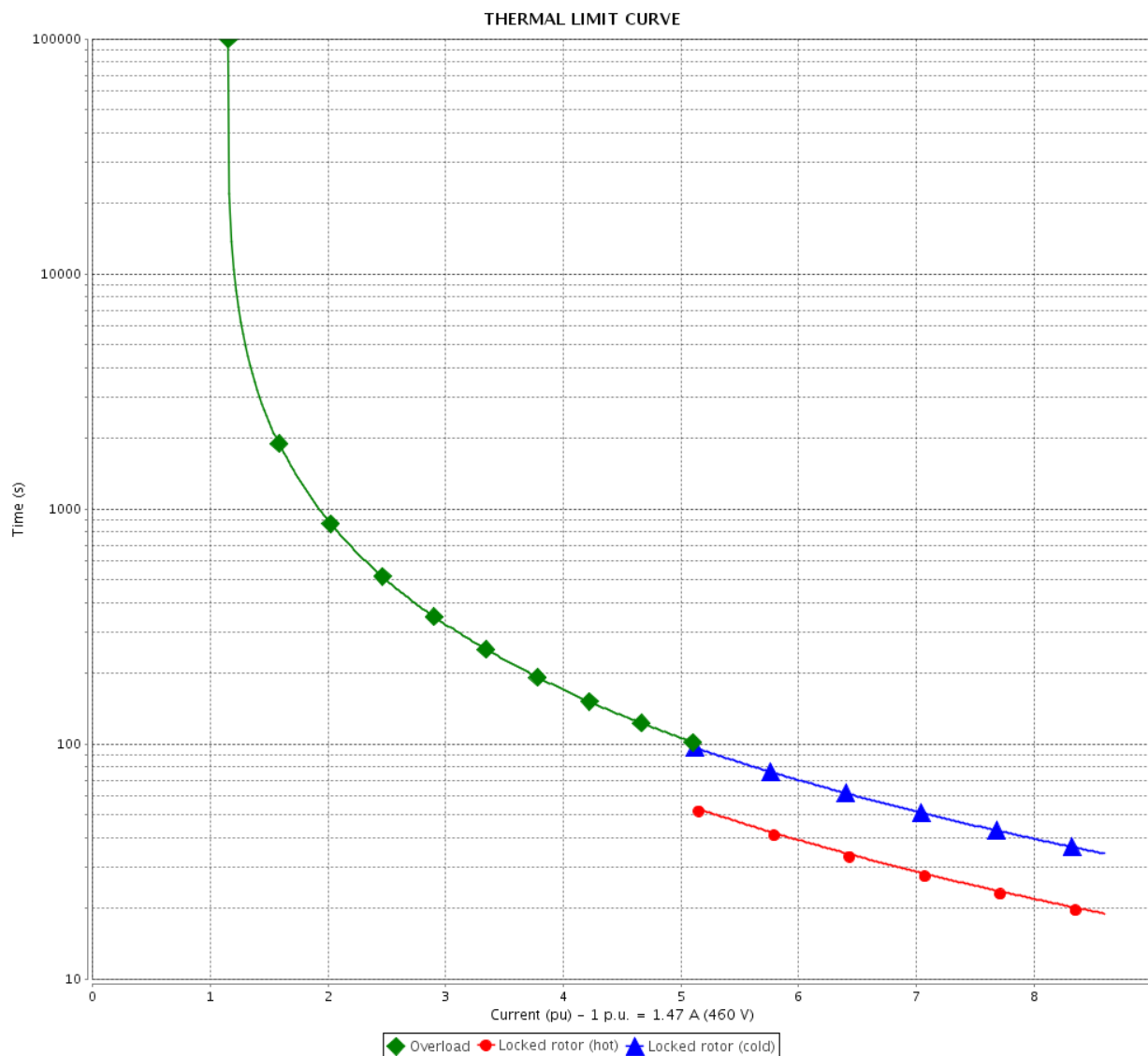
Product line : Rolled Steel Three-Phase

Product code :

13590821

Catalog # :

00118ET3EBM56C-S



Performance : 230/460 V 60 Hz 4P

Rated current : 2.94/1.47 A
 LRC : 8.6
 Rated torque : 2.98 ft.lb
 Locked rotor torque : 280 %
 Breakdown torque : 300 %
 Rated speed : 1765 rpm

Moment of inertia (J) : 0.1232 sq.ft.lb
 Duty cycle : Cont.(S1)
 Insulation class : F
 Service factor :
 Temperature rise : 80 K
 Design : B

Heating constant

Cooling constant

Rev.	Changes Summary	Performed	Checked	Date
Performed by		Page 5 / 6		
Checked by				
Date	10/04/2020			
		Revision		

VFD OPERATION CURVE

Three Phase Induction Motor - Squirrel Cage



Customer :

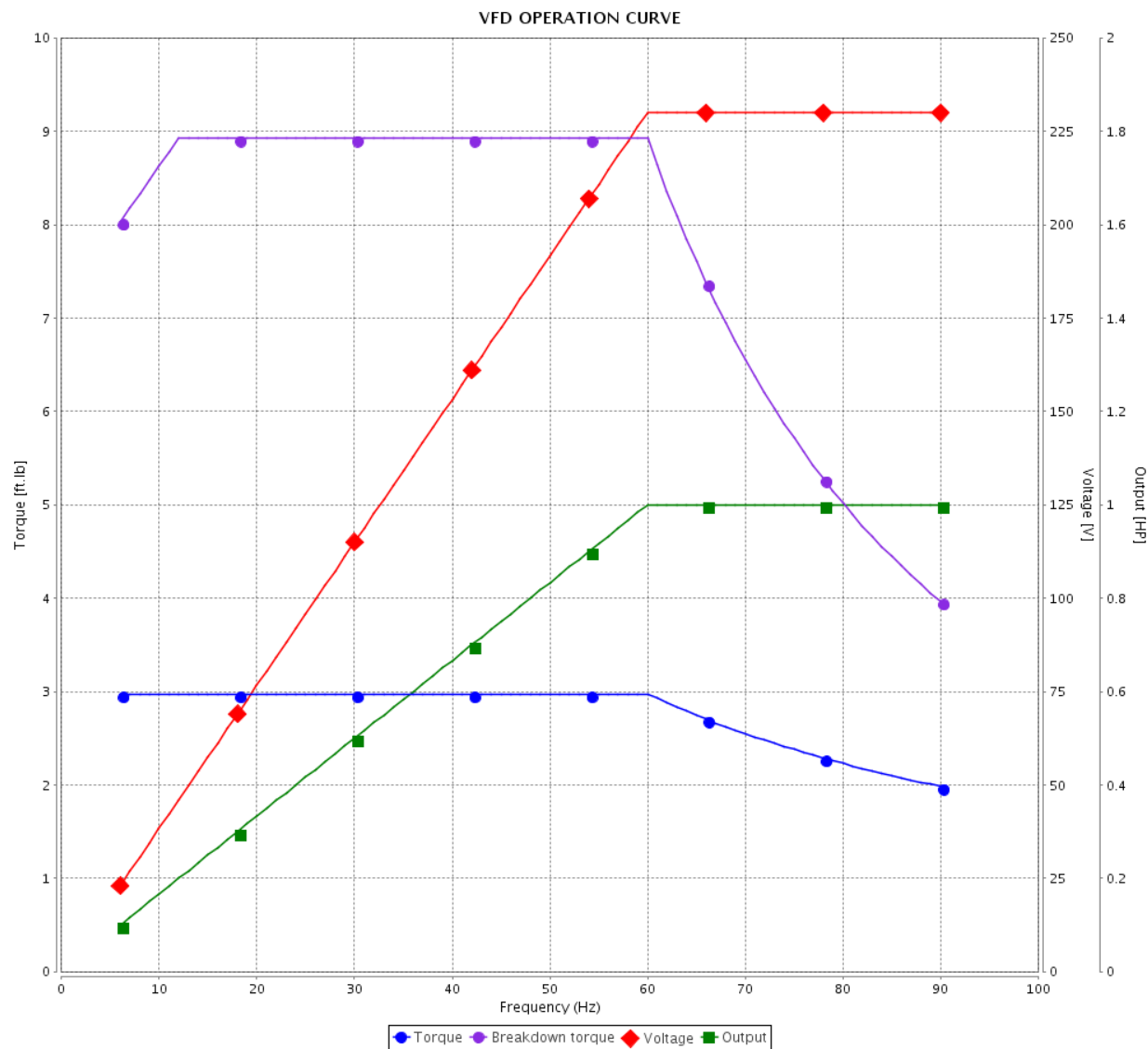
Product line : Rolled Steel Three-Phase

Product code :

13590821

Catalog # :

00118ET3EBM56C-S

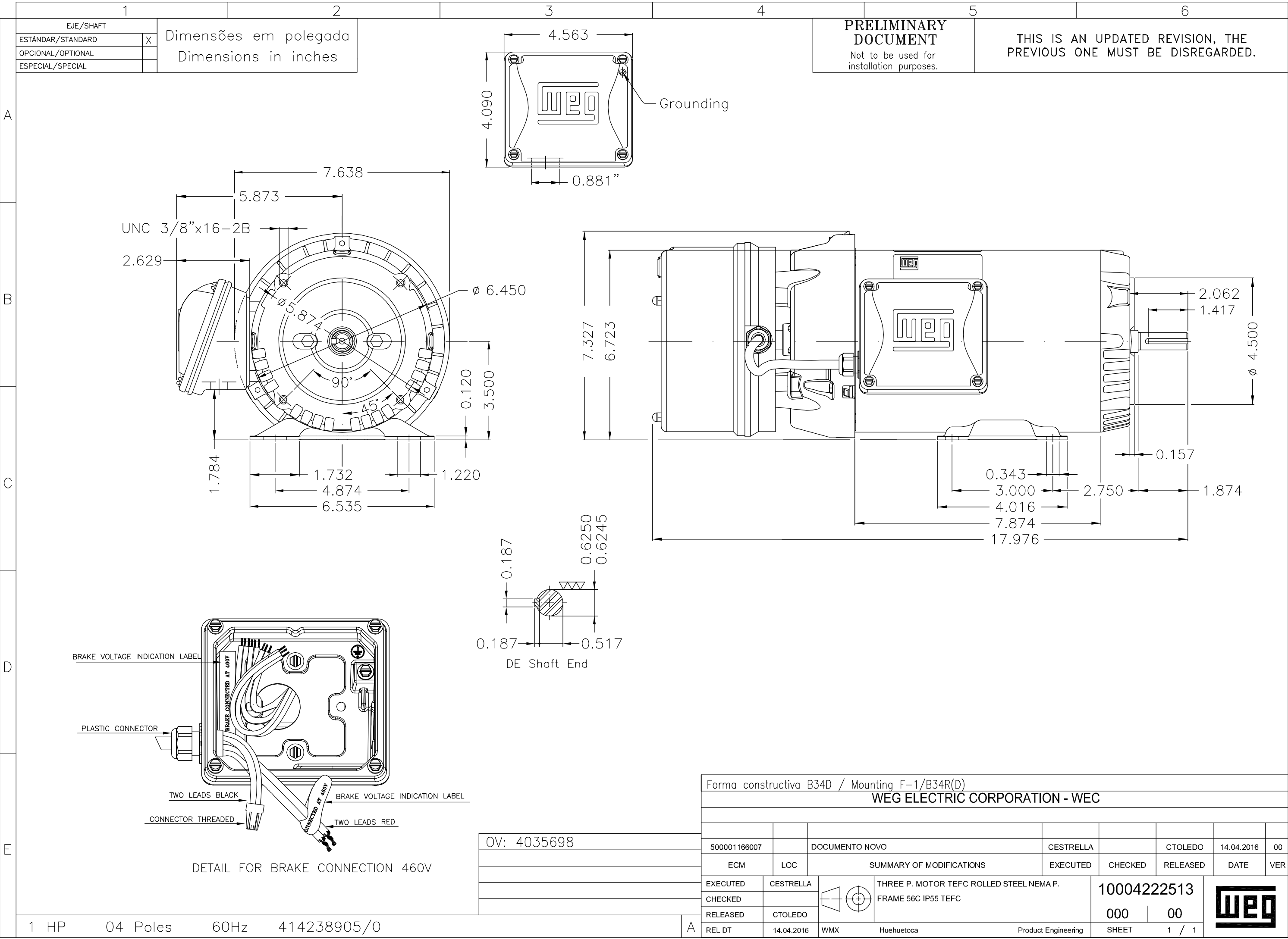


Performance : 230/460 V 60 Hz 4P

Rated current : 2.94/1.47 A
 LRC : 8.6
 Rated torque : 2.98 ft.lb
 Locked rotor torque : 280 %
 Breakdown torque : 300 %
 Rated speed : 1765 rpm

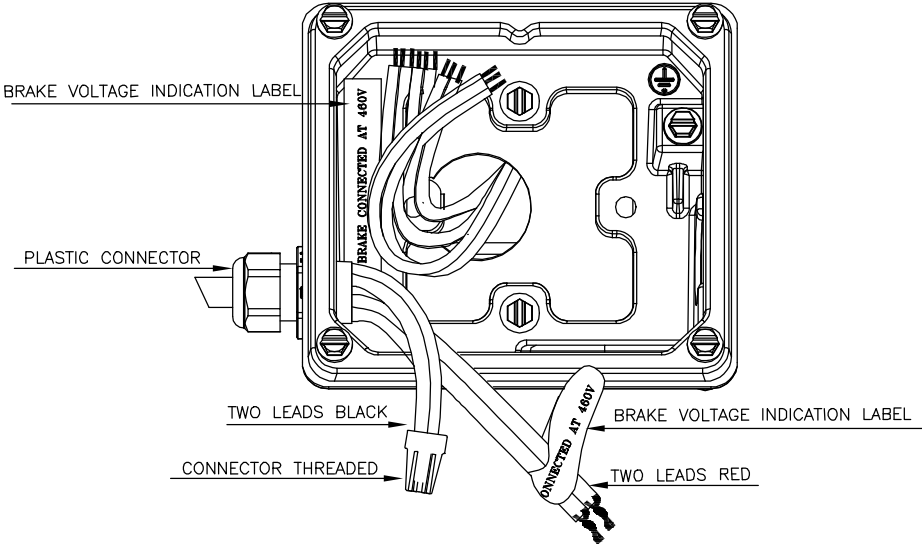
Moment of inertia (J) : 0.1232 sq.ft.lb
 Duty cycle : Cont.(S1)
 Insulation class : F
 Service factor :
 Temperature rise : 80 K
 Design : B

Rev.	Changes Summary		Performed	Checked	Date
Performed by				Page	Revision
Checked by				6 / 6	
Date					





**PRELIMINARY
DOCUMENT**
Not to be used for
installation purposes.

THIS IS AN UPDATED REVISION, THE
PREVIOUS ONE MUST BE DISREGARDED.



DETAIL FOR BRAKE CONNECTION 460V

OV: 4035698

Forma constructiva B34D / Mounting F-1/B34R(D)							
WEG ELECTRIC CORPORATION - WEC							
500001166007		DOCUMENTO NOVO	CESTRELLA		CTOLEDO	14.04.2016	00
ECM	LOC	SUMMARY OF MODIFICATIONS	EXECUTED	CHECKED	RELEASED	DATE	VER
EXECUTED	CESTRELLA	 THREE P. MOTOR TEFC ROLLED STEEL NEMA P. FRAME 56C IP55 TEFC	10004222513				
CHECKED							
RELEASED	CTOLEDO						
REL DT	14.04.2016	WMX Huehuetoca	Product Engineering	SHEET	1 / 1		



NEMA
Premium

UL C[®] 3PT9
US LISTED
FOR SAFE AREA

SP C[®] US
Energy Verified

MADE IN MEXICO

MAT: 13590821 CC029A

W01.TE0IC0X0X

MODEL 00118ET3EBM56C-S

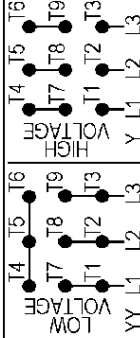
05MAR2020

For 60Hz: Class I, Zone 2, IIC
Class I, Div.2, Gr. A,B,C,D - T3
Div 2 Inverter Duty (SF1.00)
CT 2:1/VT 1000:1

PH 3	FR	56C	HP(KW)	1.0(0.75)	Hz	60
V	230/460		RPM	1765		
A	2.94/1.47		DUTY CONT.			
SFA	3.38/1.69		CODE M	DES B	IP55	
SF	1.15	INS CL F	AT	80K	AMB	40°C
PF	0.75				ENCL	TEFC
					NEMA NOM.EFF. 85.5%	

ALT 1000 m.a.s.l. USABLE @ 208V 3.25A SF1.00

ALTERNATE RATING: 1.0HP 50Hz 190-220/380-415V SF1.00
3.40-3.06/1.70-1.62A 1450RPM EFF 82.9% (IE3) IEC 60034-1



T1-BLU T2-WHT
T3-ORG T4-YEL
T5-BLK T6-GRY
T7-PNK T8-RED
T9-RED BRK

INTERCHANGE ANY TWO LINE WIRES TO REVERSE THE ROTATION

For safe area-Inverter duty motor For 60Hz use on VPWM 1000:1 VT, 5:1 CT

DE: 6204-ZZ ODE: 6203-ZZ MOBIL POLYREX EM

WARNING: Motor must be grounded in accordance with local and national electrical codes to prevent serious electrical shocks. Disconnect power source before servicing unit.

AVERTISSEMENT: Le moteur doit être mis à la terre conformément aux codes électriques locaux et nationaux afin d'éviter tout choc électrique grave. Déconnectez l'alimentation avant l'entretien de la machine.

