

DATA SHEET

Three Phase Induction Motor - Squirrel Cage



Customer :

Product line : W40 JP Pump NEMA Premium Efficiency Three-Phase Product code : 14836792
Catalog # : 06036OT3E326JPV-W40

| | | | |
|-----------------------|-----------------|-----------------------------|------------------------|
| Frame | : 324/6JP | Locked rotor time | : 21s (cold) 12s (hot) |
| Output | : 60 HP (45 kW) | Temperature rise | : 80 K |
| Poles | : 2 | Duty cycle | : Cont.(S1) |
| Frequency | : 60 Hz | Ambient temperature | : -20°C to +40°C |
| Rated voltage | : 230/460 V | Altitude | : 1000 m.a.s.l. |
| Rated current | : 142/71.0 A | Protection degree | : IP23 |
| L. R. Amperes | : 895/447 A | Cooling method | : IC01 - ODP |
| LRC | : 6.3x(Code G) | Mounting | : W-6 |
| No load current | : 40.0/20.0 A | Rotation ¹ | : Both (CW and CCW) |
| Rated speed | : 3560 rpm | Noise level ² | : 75.0 dB(A) |
| Slip | : 1.11 % | Starting method | : Direct On Line |
| Rated torque | : 88.5 ft.lb | Approx. weight ³ | : 478 lb |
| Locked rotor torque | : 220 % | | |
| Breakdown torque | : 229 % | | |
| Insulation class | : F | | |
| Service factor | : 1.25 | | |
| Moment of inertia (J) | : 3.82 sq.ft.lb | | |
| Design | : B | | |

| | | | | | |
|----------------|------|------|------|------|------------------|
| Output | 25% | 50% | 75% | 100% | Foundation loads |
| Efficiency (%) | 91.7 | 92.4 | 93.0 | 93.6 | Max. traction |
| Power Factor | 0.51 | 0.73 | 0.82 | 0.85 | Max. compression |

| | Drive end | Non drive end |
|----------------------|------------------------|------------------------|
| Bearing type | : 6312 Z C3 | : 6211 Z C3 |
| Sealing | : Without Bearing Seal | : Without Bearing Seal |
| Lubrication interval | : 9829 h | : 14226 h |
| Lubricant amount | : 21 g | : 11 g |
| Lubricant type | Mobil Polyrex EM | |

Notes
USABLE @208V 157A SF 1.15 SFA 181A

This revision replaces and cancel the previous one, which must be eliminated.
(1) Looking the motor from the shaft end.
(2) Measured at 1m and with tolerance of +3dB(A).
(3) Approximate weight subject to changes after manufacturing process.
(4) At 100% of full load.

These are average values based on tests with sinusoidal power supply, subject to the tolerances stipulated in NEMA MG-1.

| Rev. | Changes Summary | Performed | Checked | Date |
|--------------|-----------------|-----------------------------|---------|------|
| | | | | |
| Performed by | | Page Revision 1 / 6 | | |
| Checked by | | | | |
| Date | 10/04/2020 | | | |

TORQUE AND CURRENT VS SPEED CURVE

Three Phase Induction Motor - Squirrel Cage

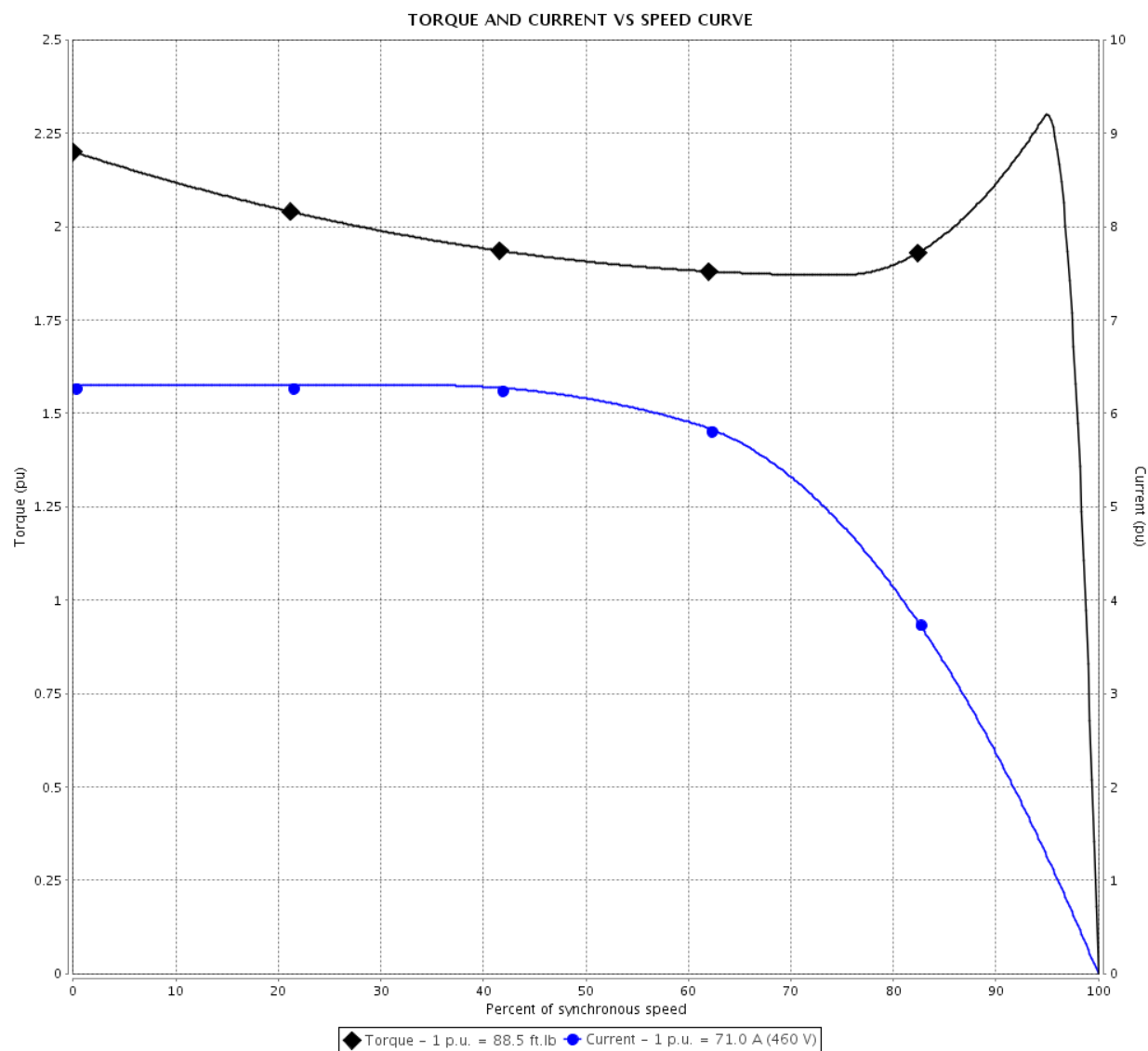


Customer :

Product line : W40 JP Pump NEMA Premium
Efficiency Three-Phase

Product code : 14836792

Catalog # : 06036OT3E326JPV-W40



Performance : 230/460 V 60 Hz 2P

Rated current : 142/71.0 A
LRC : 6.3
Rated torque : 88.5 ft.lb
Locked rotor torque : 220 %
Breakdown torque : 229 %
Rated speed : 3560 rpm

Moment of inertia (J) : 3.82 sq.ft.lb
Duty cycle : Cont.(S1)
Insulation class : F
Service factor : 1.25
Temperature rise : 80 K
Design : B

Locked rotor time : 21s (cold) 12s (hot)

| Rev. | Changes Summary | Performed | Checked | Date |
|--------------|-----------------|---|---------|------|
| | | | | |
| Performed by | | <div>Page 2 / 6</div> <div>Revision</div> | | |
| Checked by | | | | |
| Date | 10/04/2020 | | | |

LOAD PERFORMANCE CURVE

Three Phase Induction Motor - Squirrel Cage

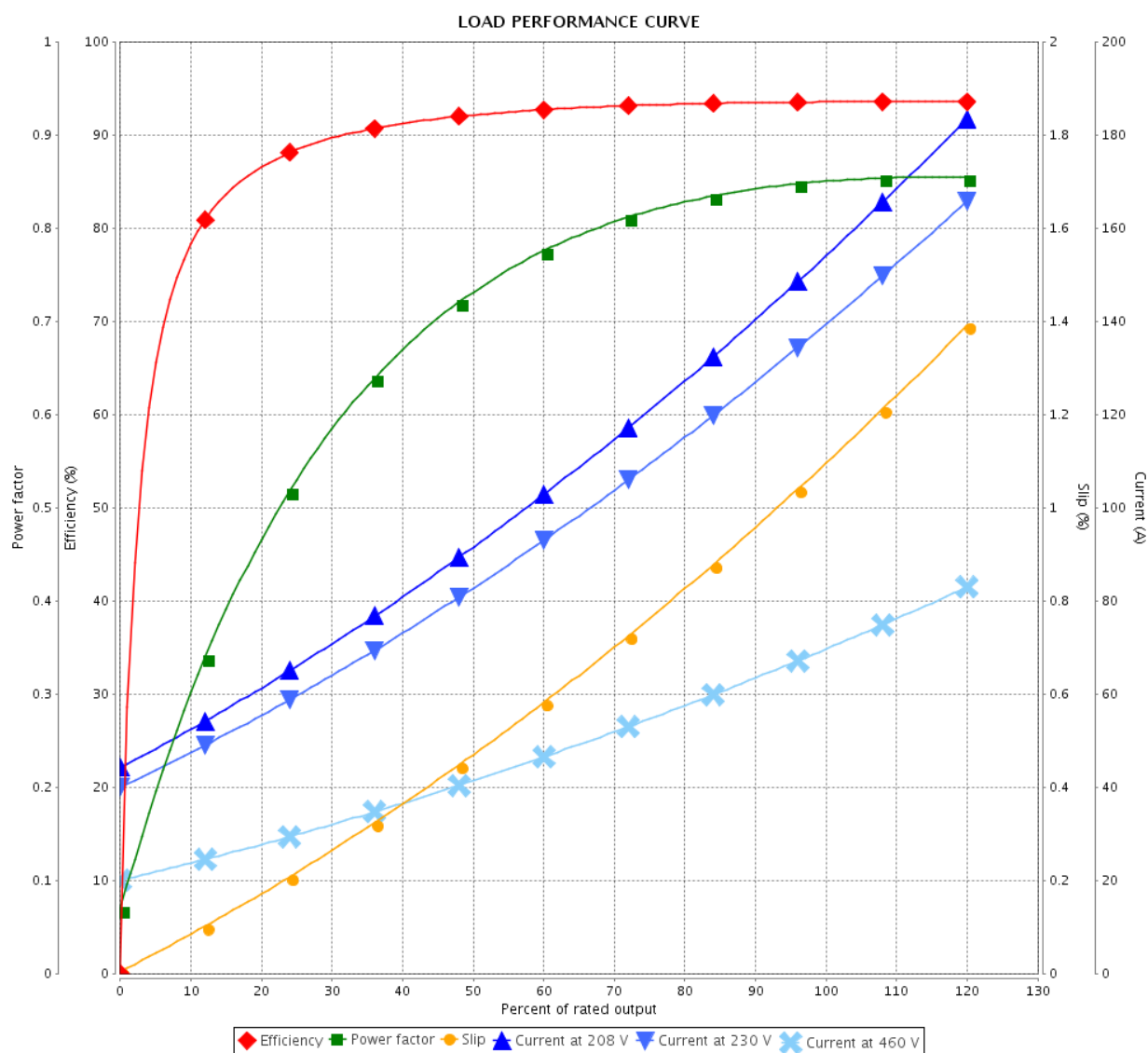


Customer :

Product line : W40 JP Pump NEMA Premium
Efficiency Three-Phase

Product code : 14836792

Catalog # : 06036OT3E326JPV-W40



Performance : 230/460 V 60 Hz 2P

Rated current : 142/71.0 A
LRC : 6.3
Rated torque : 88.5 ft.lb
Locked rotor torque : 220 %
Breakdown torque : 229 %
Rated speed : 3560 rpm

Moment of inertia (J) : 3.82 sq.ft.lb
Duty cycle : Cont.(S1)
Insulation class : F
Service factor : 1.25
Temperature rise : 80 K
Design : B

| Rev. | Changes Summary | Performed | Checked | Date |
|--------------|-----------------|-----------------------|---------|------|
| | | | | |
| Performed by | | Page 3 / 6Revision | | |
| Checked by | | | | |
| Date | 10/04/2020 | | | |

THERMAL LIMIT CURVE

Three Phase Induction Motor - Squirrel Cage



Customer

:

Product line

: W40 JP Pump NEMA Premium
Efficiency Three-Phase

Product code :

14836792

Catalog # :

06036OT3E326JPV-W40

Performance : 230/460 V 60 Hz 2P

Rated current : 142/71.0 A

LRC : 6.3

Rated torque : 88.5 ft.lb

Locked rotor torque : 220 %

Breakdown torque : 229 %

Rated speed : 3560 rpm

Moment of inertia (J) : 3.82 sq.ft.lb

Duty cycle : Cont.(S1)

Insulation class : F

Service factor : 1.25

Temperature rise : 80 K

Design : B

Heating constant

Cooling constant

Rev.

Changes Summary

Performed

Checked

Date

Performed by

Checked by

Date

10/04/2020

Page

4 / 6

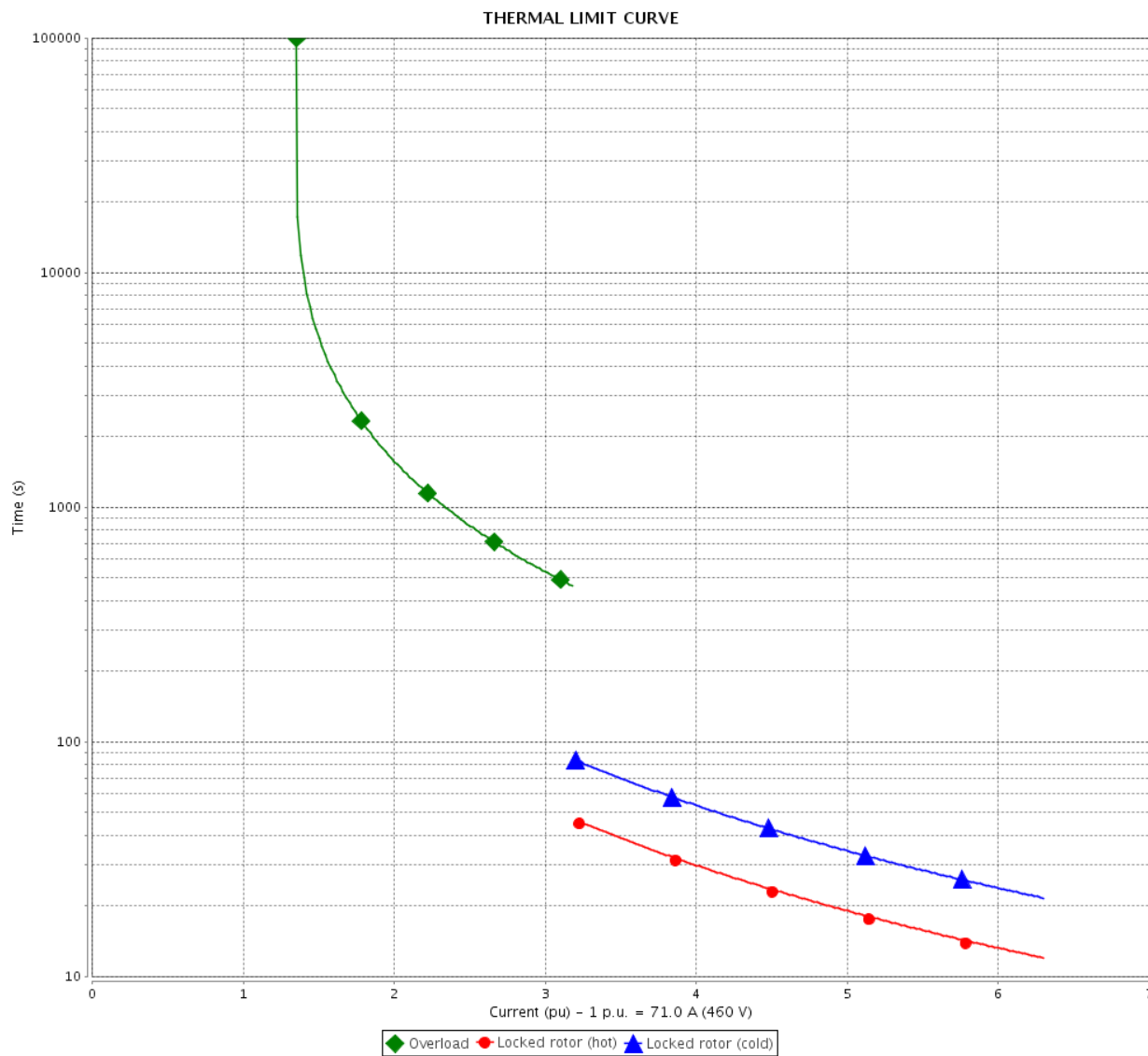
Revision

THERMAL LIMIT CURVE

Three Phase Induction Motor - Squirrel Cage



Customer : _____



| Rev. | Changes Summary | | Performed | Checked | Date |
|--------------|-----------------|--|-----------|---------------|----------|
| | | | | | |
| Performed by | | | | | |
| Checked by | | | | | |
| Date | 10/04/2020 | | | | |
| | | | | Page 5 / 6 | Revision |

VFD OPERATION CURVE

Three Phase Induction Motor - Squirrel Cage

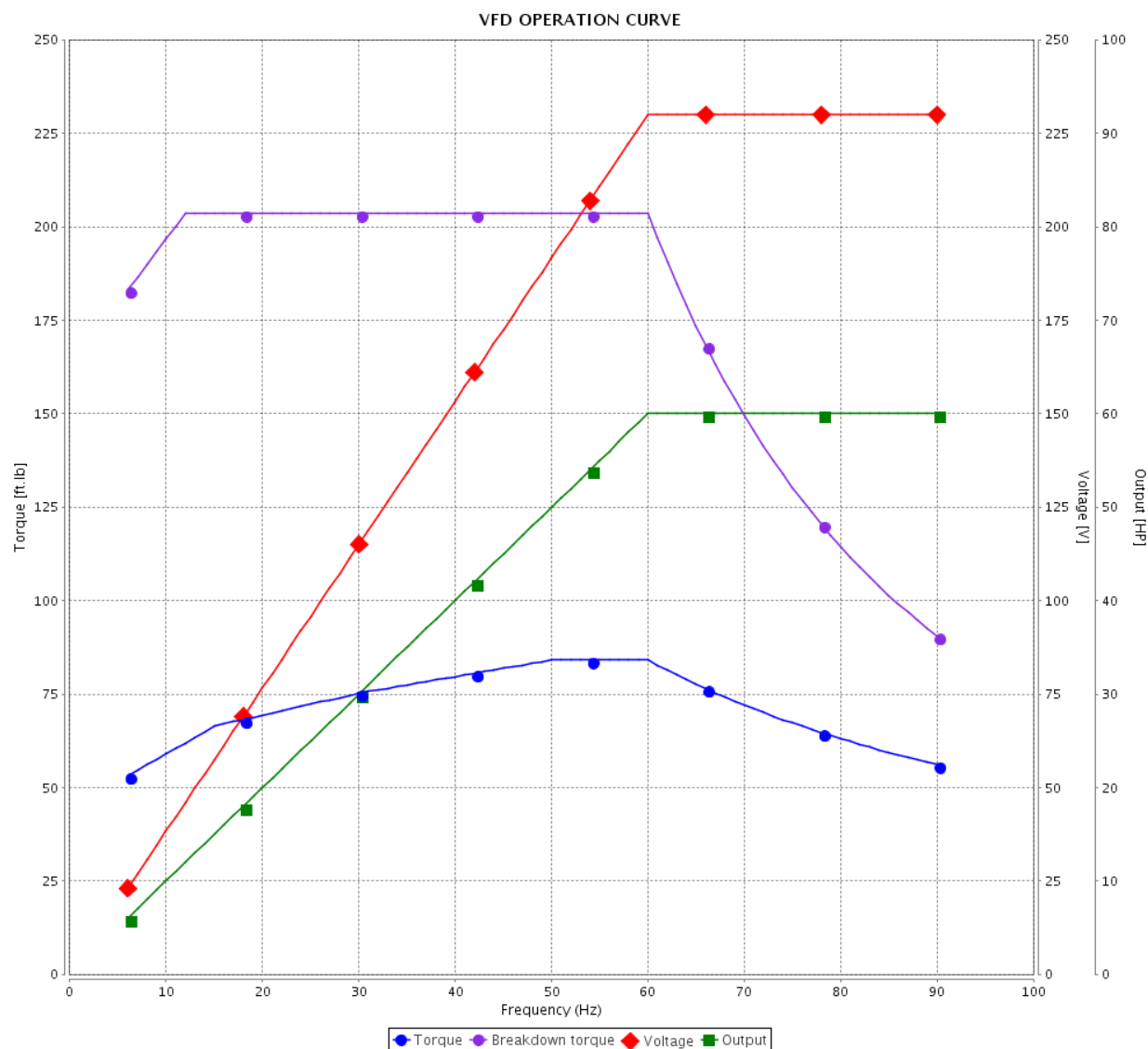


Customer :

Product line : W40 JP Pump NEMA Premium
Efficiency Three-Phase

Product code : 14836792

Catalog # : 06036OT3E326JPV-W40

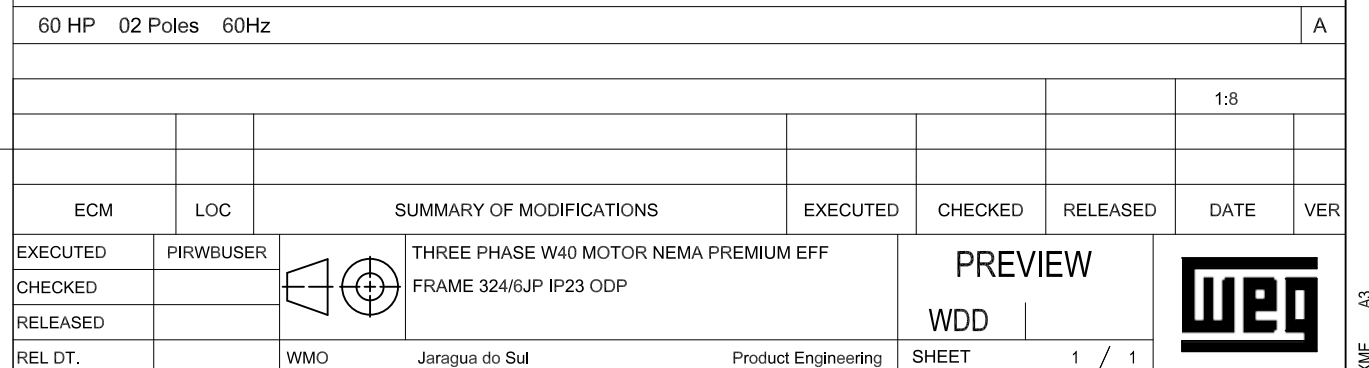
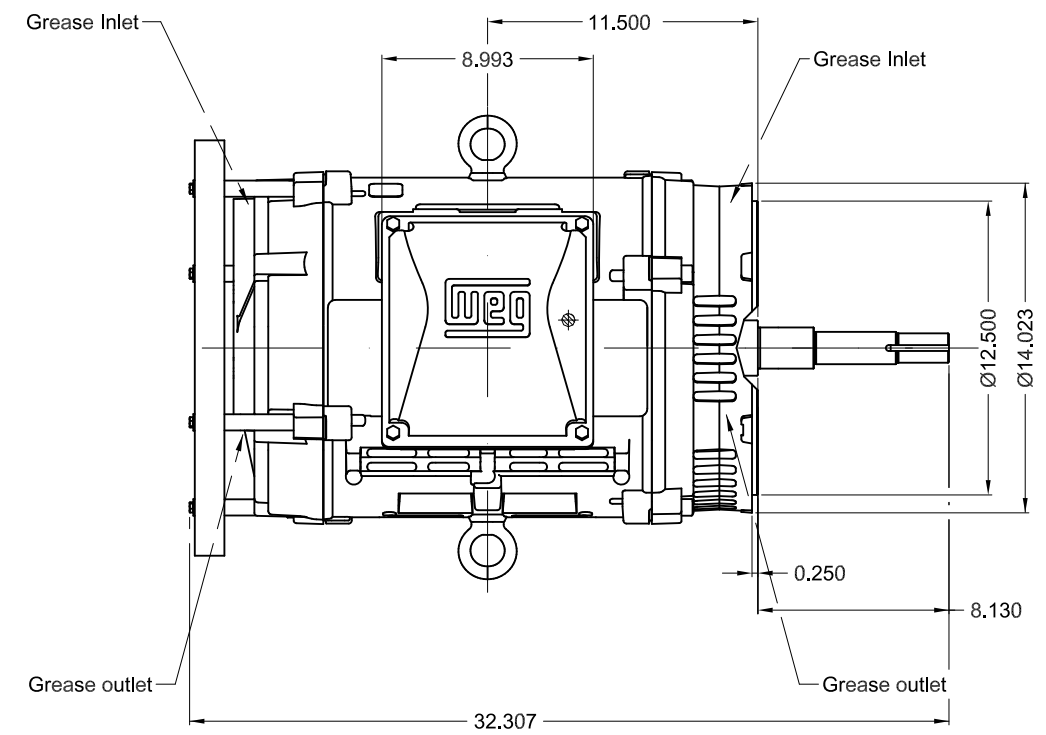


Performance : 230/460 V 60 Hz 2P

Rated current : 142/71.0 A
LRC : 6.3
Rated torque : 88.5 ft.lb
Locked rotor torque : 220 %
Breakdown torque : 229 %
Rated speed : 3560 rpm

Moment of inertia (J) : 3.82 sq.ft.lb
Duty cycle : Cont.(S1)
Insulation class : F
Service factor : 1.25
Temperature rise : 80 K
Design : B

| Rev. | Changes Summary | | Performed | Checked | Date |
|--------------|-----------------|--|-----------|---------------|----------|
| | | | | | |
| Performed by | | | | Page 6 / 6 | Revision |
| Checked by | | | | | |
| Date | 10/04/2020 | | | | |



WEG's property. Forbidden reproduction without previous authorization.