

DATA SHEET

Three Phase Induction Motor - Squirrel Cage



Customer :

Product line : W40 JP Pump NEMA Premium Efficiency Three-Phase Product code : 14270420
Catalog # : 06012OT3E404JP-W40

| | | | |
|-----------------------|-----------------|-----------------------------|------------------------|
| Frame | : 404/5JP | Locked rotor time | : 28s (cold) 16s (hot) |
| Output | : 60 HP (45 kW) | Temperature rise | : 80 K |
| Poles | : 6 | Duty cycle | : Cont.(S1) |
| Frequency | : 60 Hz | Ambient temperature | : -20°C to +40°C |
| Rated voltage | : 230/460 V | Altitude | : 1000 m.a.s.l. |
| Rated current | : 141/70.3 A | Protection degree | : IP23 |
| L. R. Amperes | : 942/471 A | Cooling method | : IC01 - ODP |
| LRC | : 6.7x(Code G) | Mounting | : F-1 |
| No load current | : 50.0/25.0 A | Rotation ¹ | : Both (CW and CCW) |
| Rated speed | : 1185 rpm | Noise level ² | : 68.0 dB(A) |
| Slip | : 1.25 % | Starting method | : Direct On Line |
| Rated torque | : 266 ft.lb | Approx. weight ³ | : 975 lb |
| Locked rotor torque | : 240 % | | |
| Breakdown torque | : 250 % | | |
| Insulation class | : F | | |
| Service factor | : 1.25 | | |
| Moment of inertia (J) | : 29.4 sq.ft.lb | | |
| Design | : B | | |

| | | | | | | |
|----------------|------|------|------|------|------------------|-----------|
| Output | 25% | 50% | 75% | 100% | Foundation loads | |
| Efficiency (%) | 91.4 | 91.7 | 94.5 | 94.5 | Max. traction | : 1990 lb |
| Power Factor | 0.48 | 0.73 | 0.82 | 0.85 | Max. compression | : 2966 lb |

| | Drive end | Non drive end |
|----------------------|------------------------|------------------------|
| Bearing type | : 6314 C3 | : 6212 Z C3 |
| Sealing | : Without Bearing Seal | : Without Bearing Seal |
| Lubrication interval | : 20000 h | : 20000 h |
| Lubricant amount | : 27 g | : 13 g |
| Lubricant type | Mobil Polyrex EM | |

Notes
USABLE @208V 155A SF 1.15 SFA 179A

This revision replaces and cancel the previous one, which must be eliminated.

- (1) Looking the motor from the shaft end.
- (2) Measured at 1m and with tolerance of +3dB(A).
- (3) Approximate weight subject to changes after manufacturing process.
- (4) At 100% of full load.

These are average values based on tests with sinusoidal power supply, subject to the tolerances stipulated in NEMA MG-1.

| Rev. | Changes Summary | Performed | Checked | Date |
|--------------|-----------------|-----------|---------|----------|
| | | | | |
| Performed by | | | | |
| Checked by | | | | |
| Date | 10/04/2020 | | | |
| | | | Page | Revision |
| | | | 1 / 6 | |

TORQUE AND CURRENT VS SPEED CURVE

Three Phase Induction Motor - Squirrel Cage

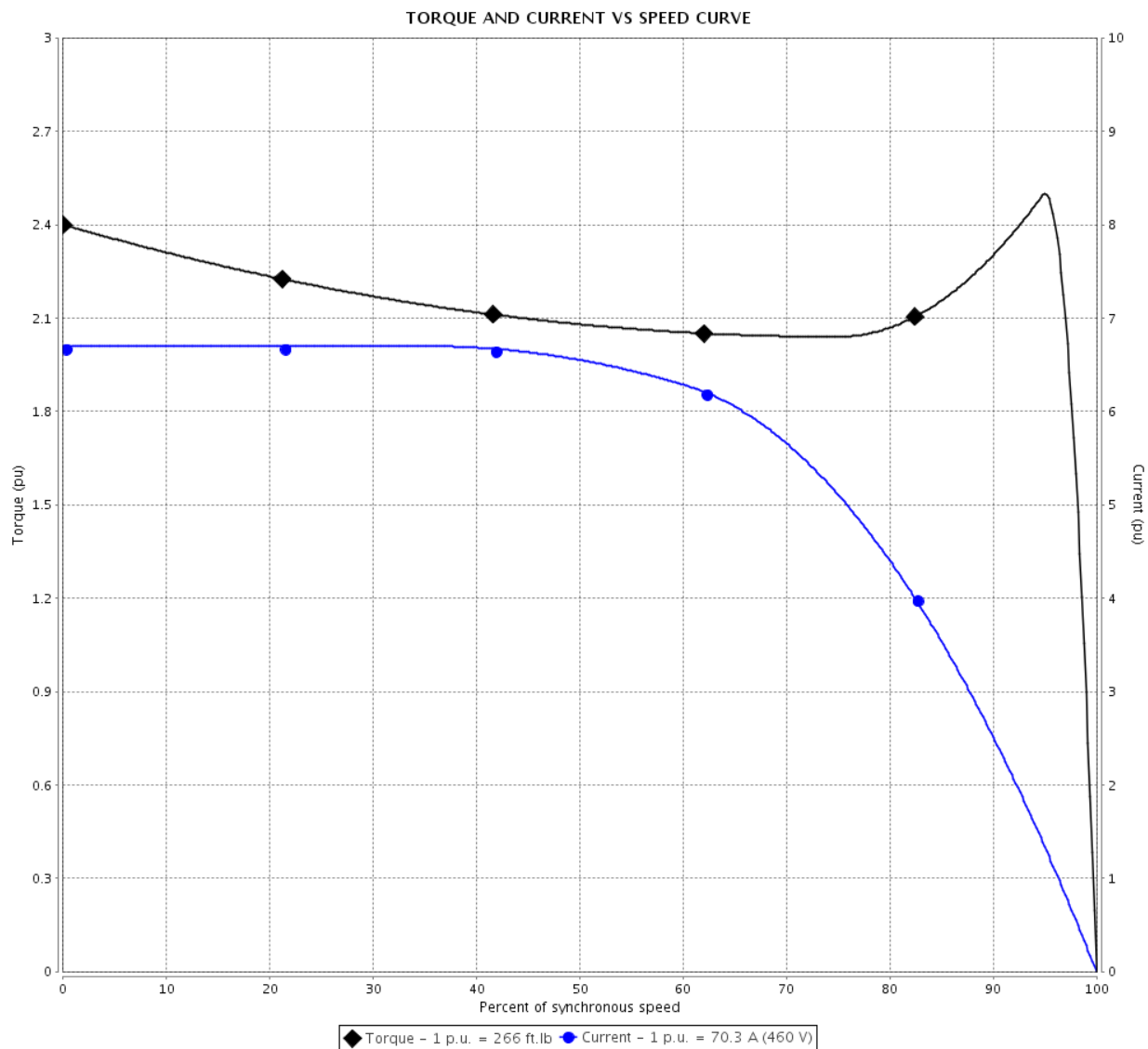


Customer :

Product line : W40 JP Pump NEMA Premium
Efficiency Three-Phase

Product code : 14270420

Catalog # : 060120T3E404JP-W40



Performance : 230/460 V 60 Hz 6P

Rated current : 141/70.3 A
LRC : 6.7
Rated torque : 266 ft.lb
Locked rotor torque : 240 %
Breakdown torque : 250 %
Rated speed : 1185 rpm

Moment of inertia (J) : 29.4 sq.ft.lb
Duty cycle : Cont.(S1)
Insulation class : F
Service factor : 1.25
Temperature rise : 80 K
Design : B

Locked rotor time : 28s (cold) 16s (hot)

| Rev. | Changes Summary | Performed | Checked | Date |
|--------------|-----------------|---|---------|------|
| | | | | |
| Performed by | | <div>Page 2 / 6</div> <div>Revision</div> | | |
| Checked by | | | | |
| Date | 10/04/2020 | | | |

LOAD PERFORMANCE CURVE

Three Phase Induction Motor - Squirrel Cage

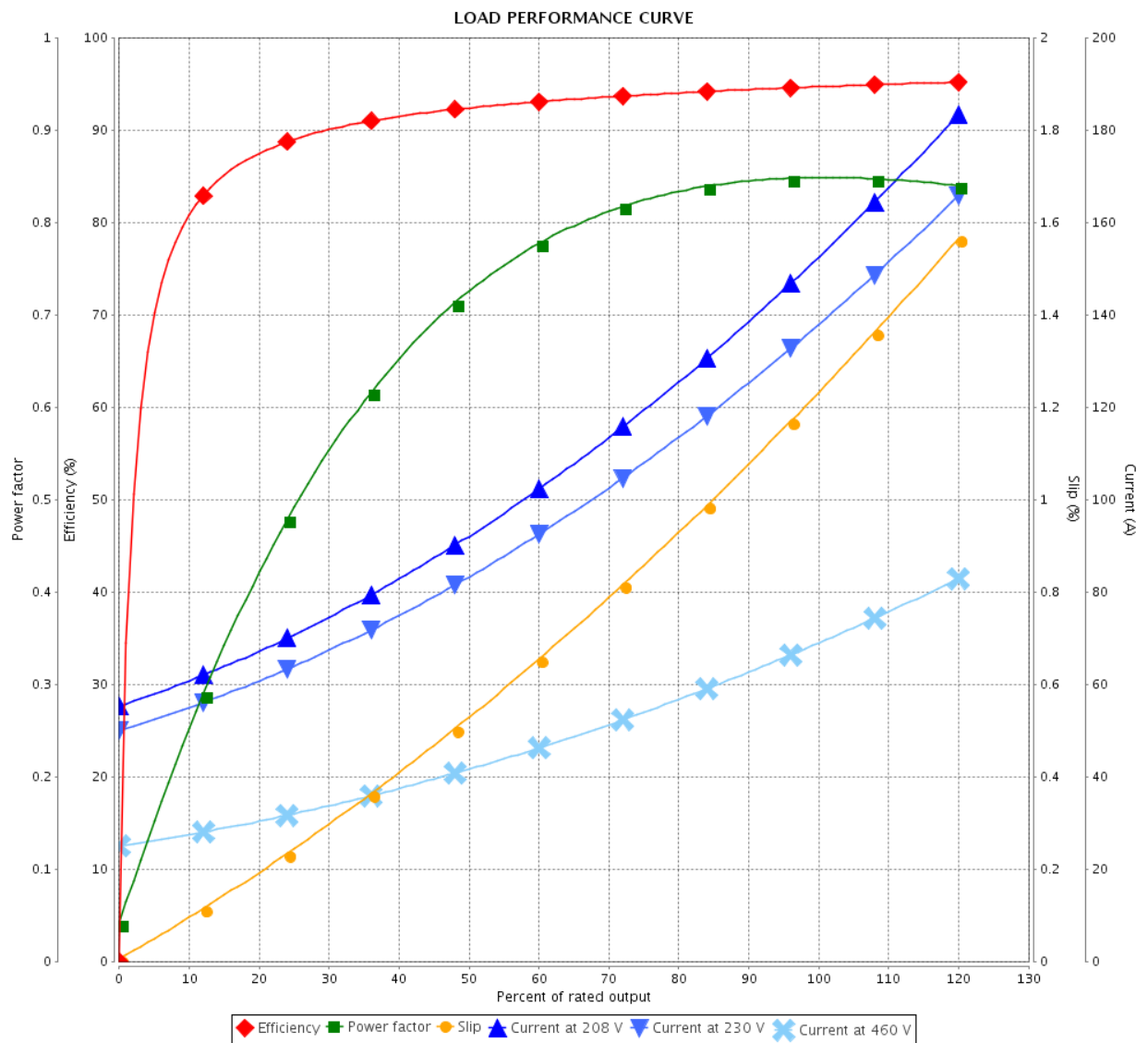


Customer :

Product line : W40 JP Pump NEMA Premium
Efficiency Three-Phase

Product code : 14270420

Catalog # : 06012OT3E404JP-W40



Performance : 230/460 V 60 Hz 6P

Rated current : 141/70.3 A
LRC : 6.7
Rated torque : 266 ft.lb
Locked rotor torque : 240 %
Breakdown torque : 250 %
Rated speed : 1185 rpm

Moment of inertia (J) : 29.4 sq.ft.lb
Duty cycle : Cont.(S1)
Insulation class : F
Service factor : 1.25
Temperature rise : 80 K
Design : B

| Rev. | Changes Summary | Performed | Checked | Date |
|--------------|-----------------|-----------------------|---------|------|
| | | | | |
| Performed by | | Page 3 / 6Revision | | |
| Checked by | | | | |
| Date | 10/04/2020 | | | |

THERMAL LIMIT CURVE

Three Phase Induction Motor - Squirrel Cage



Customer :

Product line : W40 JP Pump NEMA Premium
Efficiency Three-Phase

Product code : 14270420

Catalog # : 06012OT3E404JP-W40

Performance : 230/460 V 60 Hz 6P

Rated current : 141/70.3 A
LRC : 6.7
Rated torque : 266 ft.lb
Locked rotor torque : 240 %
Breakdown torque : 250 %
Rated speed : 1185 rpm

Moment of inertia (J) : 29.4 sq.ft.lb
Duty cycle : Cont.(S1)
Insulation class : F
Service factor : 1.25
Temperature rise : 80 K
Design : B

Heating constant

Cooling constant

Rev.

Changes Summary

Performed

Checked

Date

Performed by

Checked by

Date

10/04/2020

Page

4 / 6

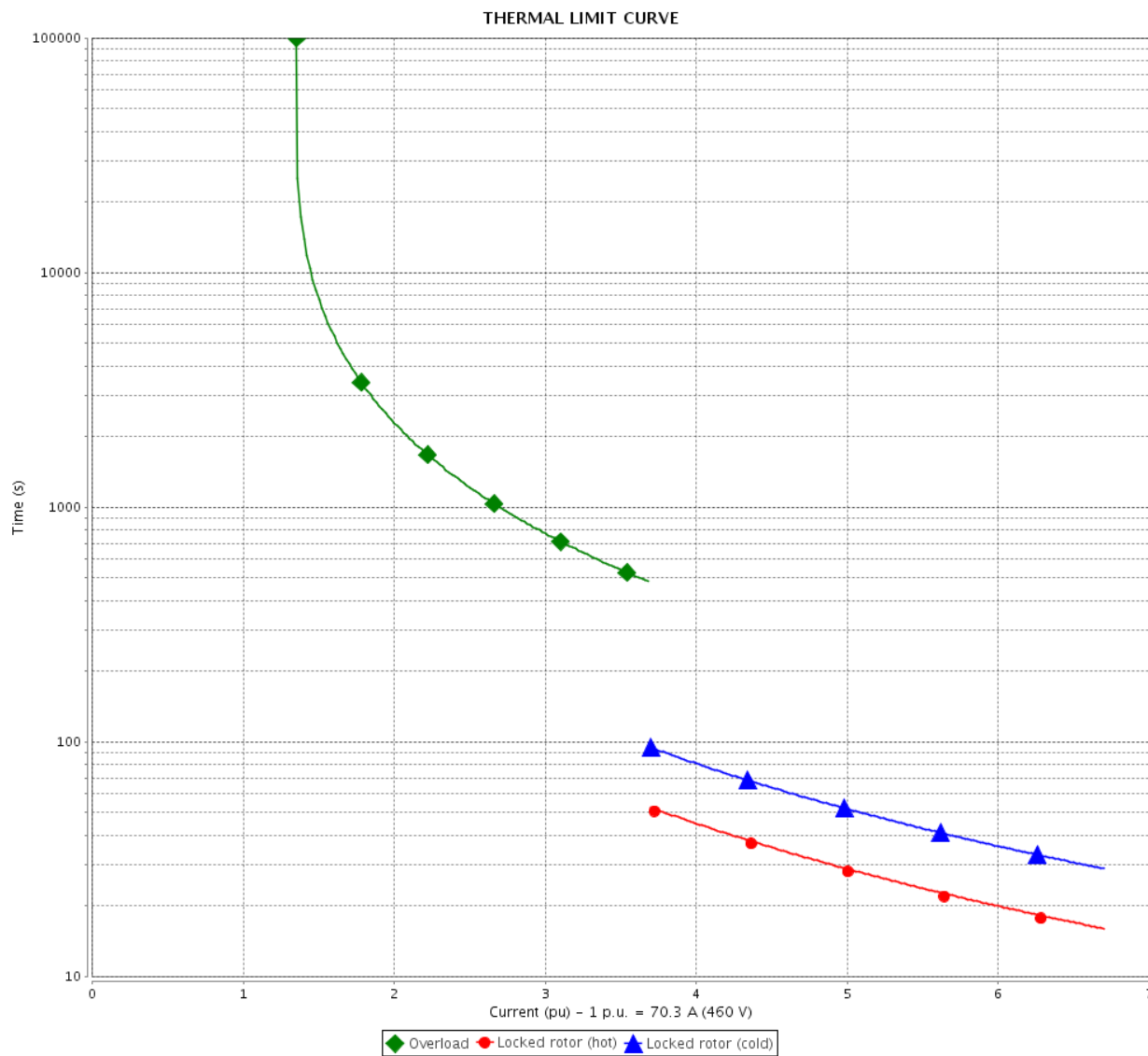
Revision

THERMAL LIMIT CURVE

Three Phase Induction Motor - Squirrel Cage



Customer : _____



| Rev. | Changes Summary | | Performed | Checked | Date |
|--------------|-----------------|--|-----------|---------------|----------|
| | | | | | |
| Performed by | | | | Page 5 / 6 | Revision |
| Checked by | | | | | |
| Date | 10/04/2020 | | | | |

VFD OPERATION CURVE

Three Phase Induction Motor - Squirrel Cage

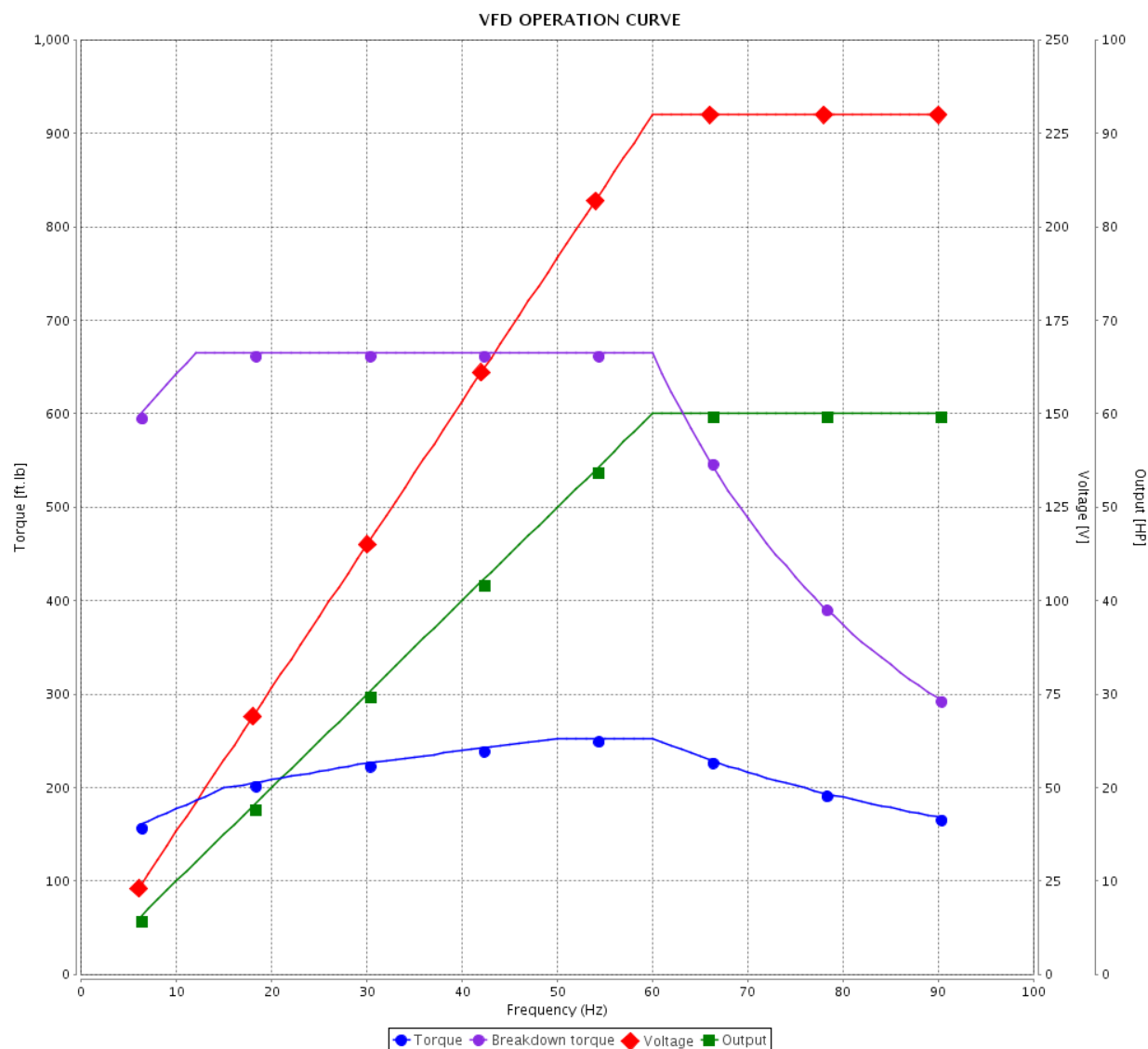


Customer :

Product line : W40 JP Pump NEMA Premium
Efficiency Three-Phase

Product code : 14270420

Catalog # : 060120T3E404JP-W40

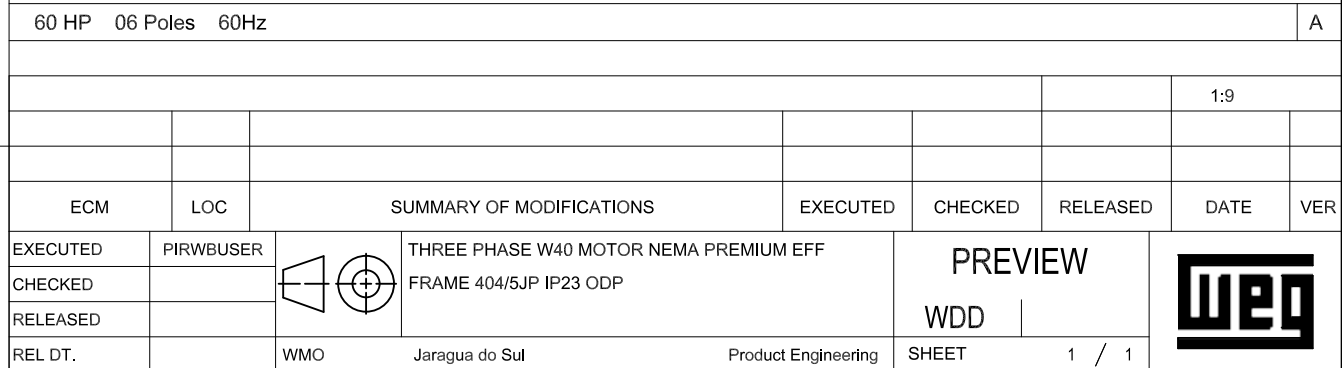
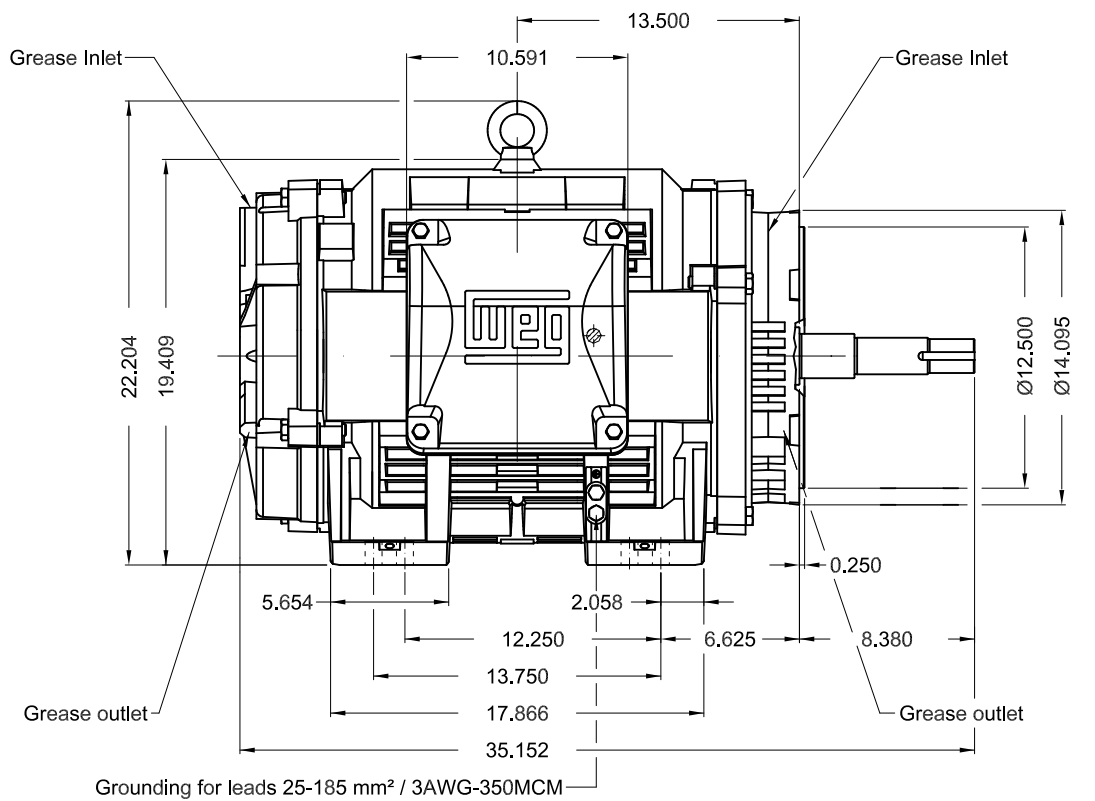


Performance : 230/460 V 60 Hz 6P

Rated current : 141/70.3 A
LRC : 6.7
Rated torque : 266 ft.lb
Locked rotor torque : 240 %
Breakdown torque : 250 %
Rated speed : 1185 rpm

Moment of inertia (J) : 29.4 sq.ft.lb
Duty cycle : Cont.(S1)
Insulation class : F
Service factor : 1.25
Temperature rise : 80 K
Design : B

| Rev. | Changes Summary | Performed | Checked | Date |
|--------------|-----------------|-----------|---------|---------------|
| | | | | |
| Performed by | | | | Page 6 / 6 |
| Checked by | | | | |
| Date | | | | |
| | 10/04/2020 | | | Revision |



WEG's property. Forbidden reproduction without previous authorization.