

DATA SHEET

Three Phase Induction Motor - Squirrel Cage



Customer :

Product line : W40 NEMA Premium Efficiency Three-Phase Product code : 14272925
Catalog # : 12518OT3E405T-W40G

Frame	: 404/5T	Locked rotor time	: 18s (cold) 10s (hot)
Output	: 125 HP	Temperature rise	: 80 K
Poles	: 4	Duty cycle	: Cont.(S1)
Frequency	: 60 Hz	Ambient temperature	: -20°C to +40°C
Rated voltage	: 230/460 V	Altitude	: 1000 m.a.s.l.
Rated current	: 276/138 A	Protection degree	: IP23
L. R. Amperes	: 1904/952 A	Cooling method	: IC01 - ODP
LRC	: 6.9x(Code G)	Mounting	: F-1
No load current	: 94.0/47.0 A	Rotation ¹	: Both (CW and CCW)
Rated speed	: 1780 rpm	Noise level ²	: 69.0 dB(A)
Slip	: 1.11 %	Starting method	: Direct On Line
Rated torque	: 369 ft.lb	Approx. weight ³	: 1072 lb
Locked rotor torque	: 270 %		
Breakdown torque	: 260 %		
Insulation class	: F		
Service factor	: 1.25		
Moment of inertia (J)	: 25.5 sq.ft.lb		
Design	: B		

Output	25%	50%	75%	100%	Foundation loads	
Efficiency (%)	94.9	95.0	95.4	95.4	Max. traction	: 2869 lb
Power Factor	0.50	0.75	0.83	0.86	Max. compression	: 3941 lb

		<u>Drive end</u>	<u>Non drive end</u>
Bearing type	:	6316 C3	6212 Z C3
Sealing	:	Without Bearing Seal	Without Bearing Seal
Lubrication interval	:	20000 h	20000 h
Lubricant amount	:	34 g	13 g
Lubricant type	:	Mobil Polyrex EM	

Notes
USABLE @208V 305A SF 1.15 SFA 351A

This revision replaces and cancel the previous one, which must be eliminated.
(1) Looking the motor from the shaft end.
(2) Measured at 1m and with tolerance of +3dB(A).
(3) Approximate weight subject to changes after manufacturing process.
(4) At 100% of full load.

These are average values based on tests with sinusoidal power supply, subject to the tolerances stipulated in NEMA MG-1.

Rev.	Changes Summary	Performed	Checked	Date
Performed by		Page 1 / 6 Revision		
Checked by				
Date	10/04/2020			

TORQUE AND CURRENT VS SPEED CURVE

Three Phase Induction Motor - Squirrel Cage

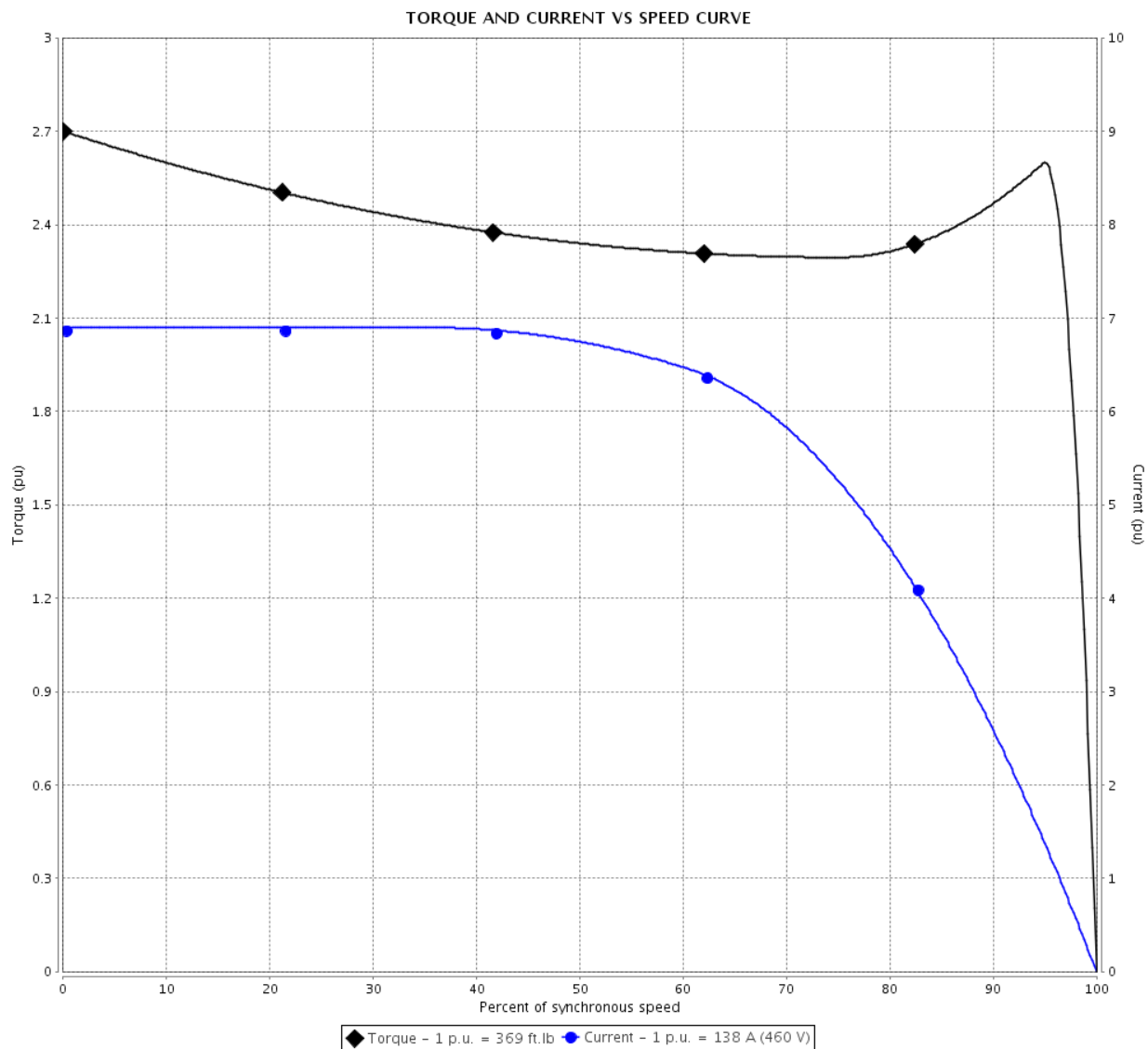


Customer :

Product line : W40 NEMA Premium Efficiency
Three-Phase

Product code : 14272925

Catalog # : 12518OT3E405T-W40G



Performance : 230/460 V 60 Hz 4P

Rated current : 276/138 A
LRC : 6.9
Rated torque : 369 ft.lb
Locked rotor torque : 270 %
Breakdown torque : 260 %
Rated speed : 1780 rpm

Moment of inertia (J) : 25.5 sq.ft.lb
Duty cycle : Cont.(S1)
Insulation class : F
Service factor : 1.25
Temperature rise : 80 K
Design : B

Locked rotor time : 18s (cold) 10s (hot)

Rev.	Changes Summary	Performed	Checked	Date
Performed by		<div>Page 2 / 6</div> <div>Revision</div>		
Checked by				
Date	10/04/2020			

LOAD PERFORMANCE CURVE

Three Phase Induction Motor - Squirrel Cage

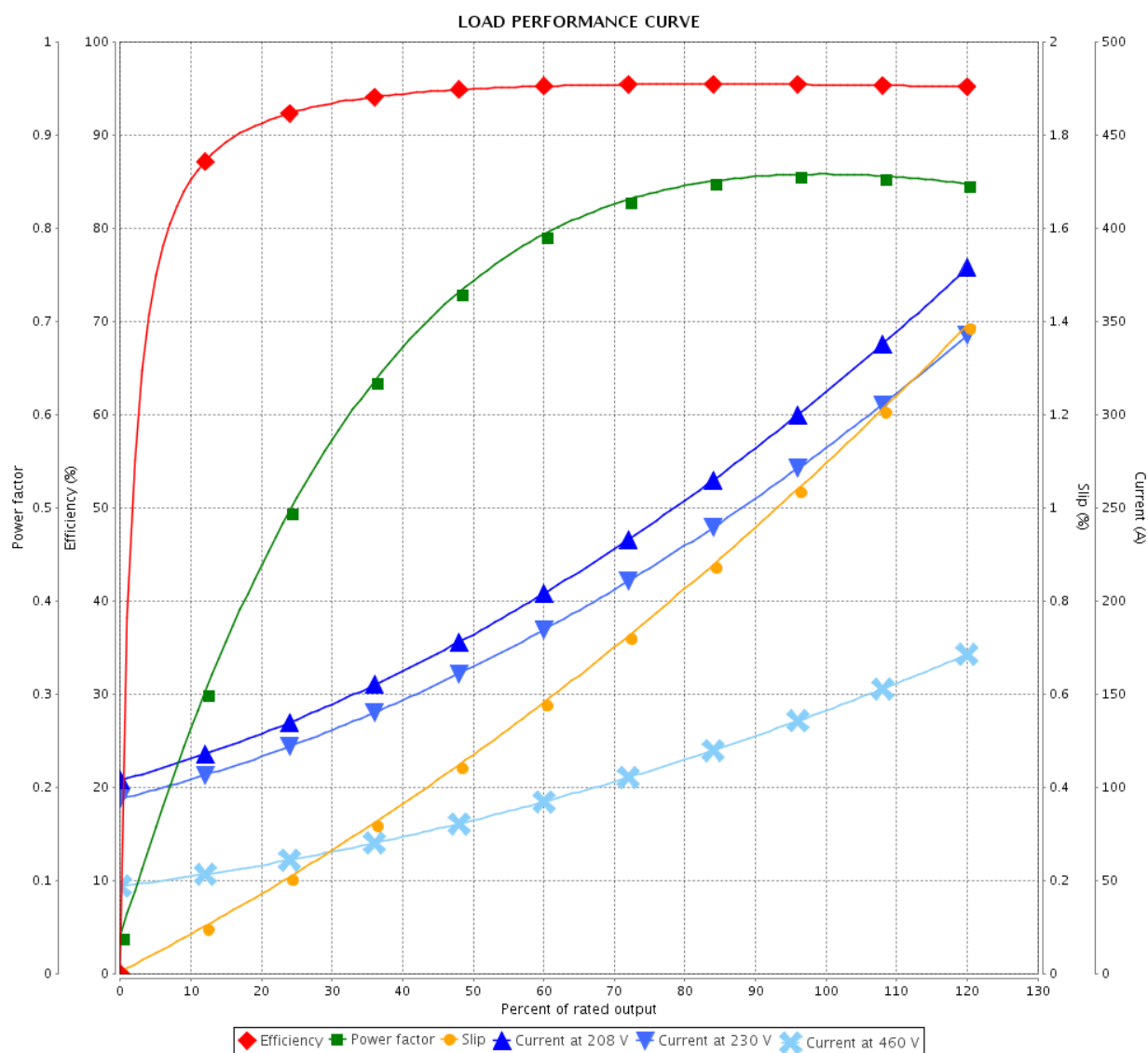


Customer :

Product line : W40 NEMA Premium Efficiency
Three-Phase

Product code : 14272925

Catalog # : 12518OT3E405T-W40G



Performance : 230/460 V 60 Hz 4P

Rated current : 276/138 A
LRC : 6.9
Rated torque : 369 ft.lb
Locked rotor torque : 270 %
Breakdown torque : 260 %
Rated speed : 1780 rpm

Moment of inertia (J) : 25.5 sq.ft.lb
Duty cycle : Cont.(S1)
Insulation class : F
Service factor : 1.25
Temperature rise : 80 K
Design : B

Rev.	Changes Summary	Performed	Checked	Date
Performed by		Page 3 / 6		
Checked by				
Date	10/04/2020			
		Revision		

THERMAL LIMIT CURVE

Three Phase Induction Motor - Squirrel Cage



Customer :

Product line : W40 NEMA Premium Efficiency
Three-Phase

Product code : 14272925

Catalog # : 12518OT3E405T-W40G

Performance : 230/460 V 60 Hz 4P

Rated current : 276/138 A
LRC : 6.9
Rated torque : 369 ft.lb
Locked rotor torque : 270 %
Breakdown torque : 260 %
Rated speed : 1780 rpm

Moment of inertia (J) : 25.5 sq.ft.lb
Duty cycle : Cont.(S1)
Insulation class : F
Service factor : 1.25
Temperature rise : 80 K
Design : B

Heating constant

Cooling constant

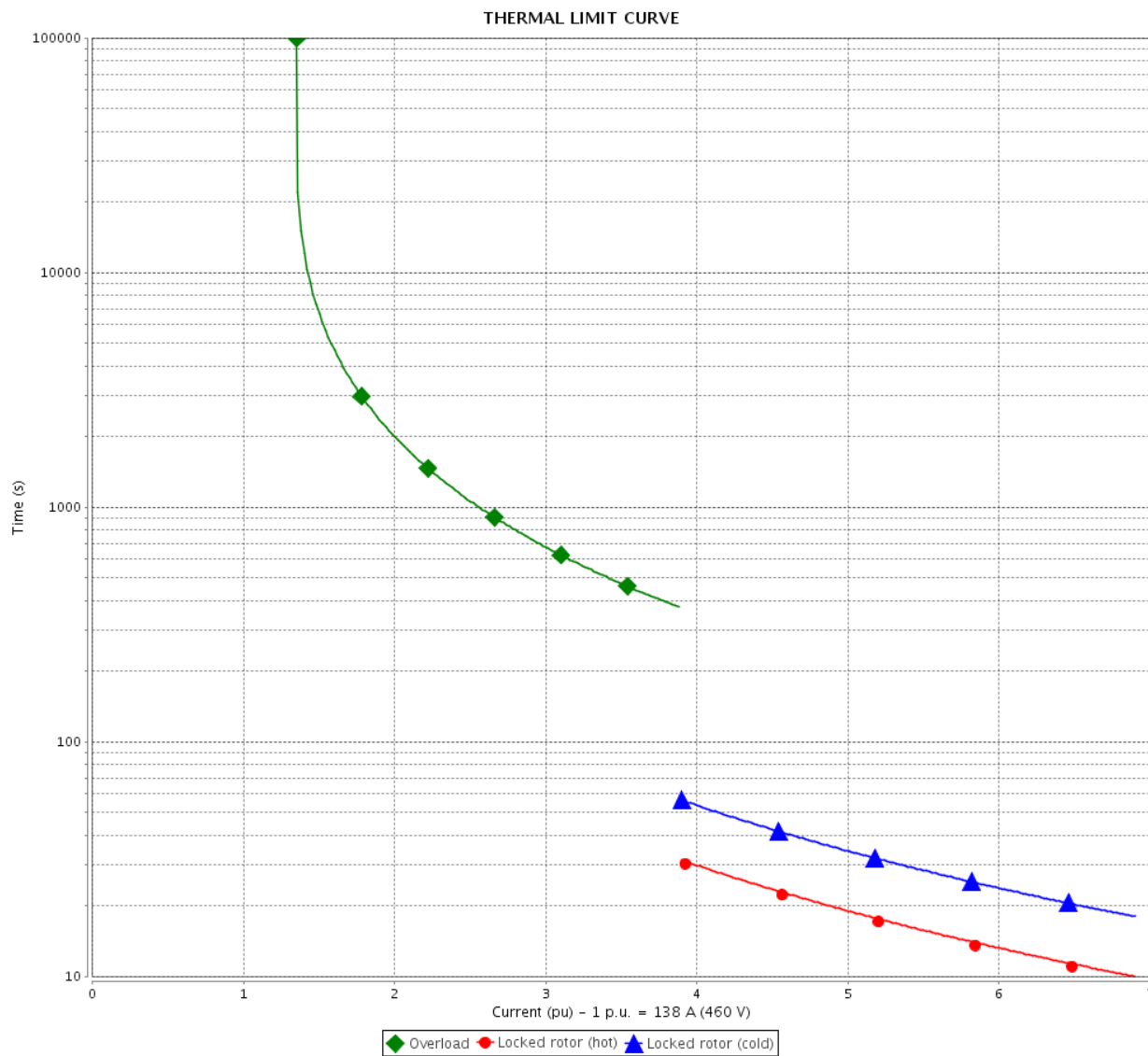
Rev.	Changes Summary		Performed	Checked	Date
Performed by			Page 4 / 6		Revision
Checked by					
Date	10/04/2020				

THERMAL LIMIT CURVE

Three Phase Induction Motor - Squirrel Cage



Customer : _____



Rev.	Changes Summary		Performed	Checked	Date
Performed by				Page 5 / 6	Revision
Checked by					
Date	10/04/2020				

VFD OPERATION CURVE

Three Phase Induction Motor - Squirrel Cage

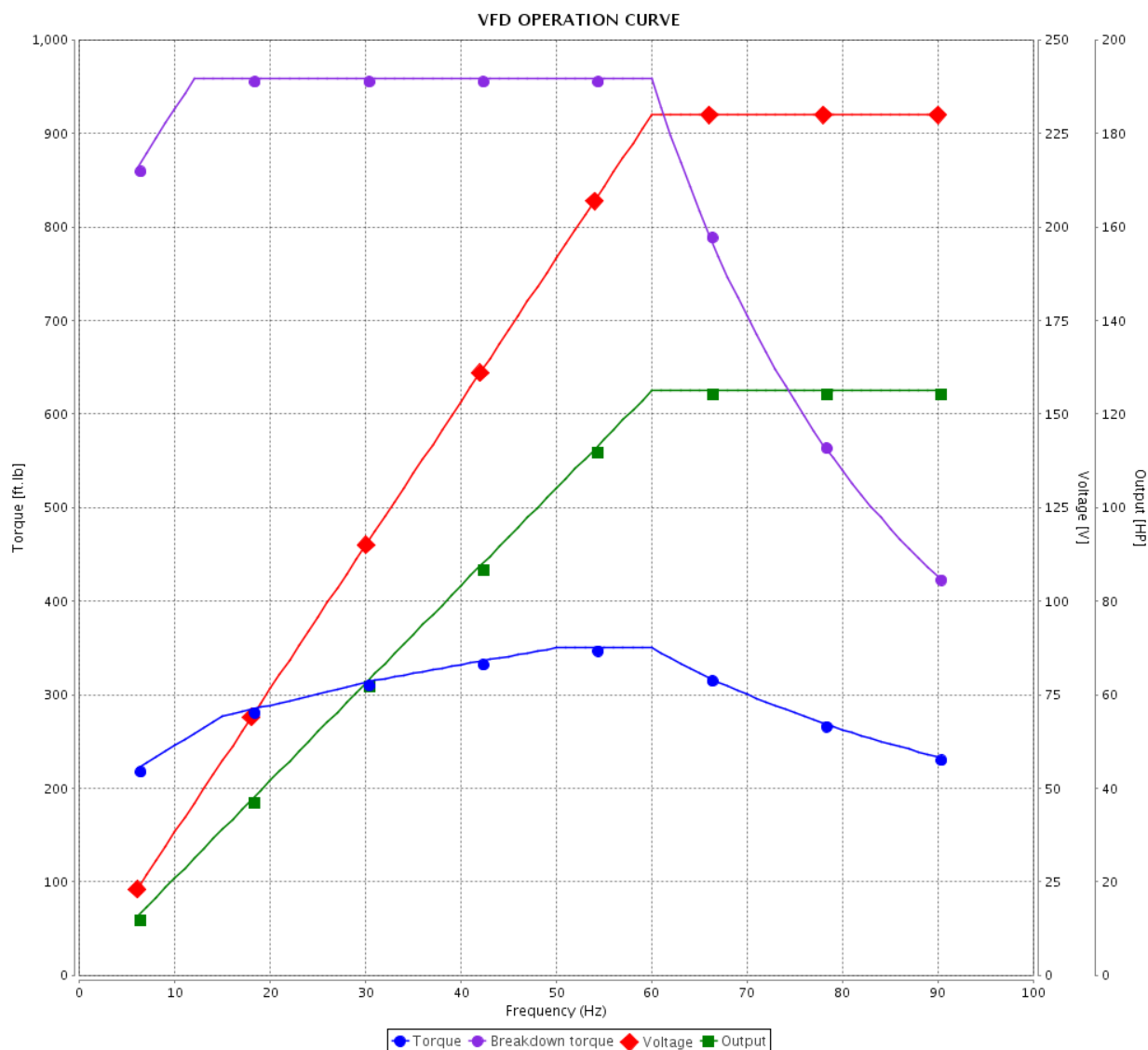


Customer :

Product line : W40 NEMA Premium Efficiency
Three-Phase

Product code : 14272925

Catalog # : 12518OT3E405T-W40G

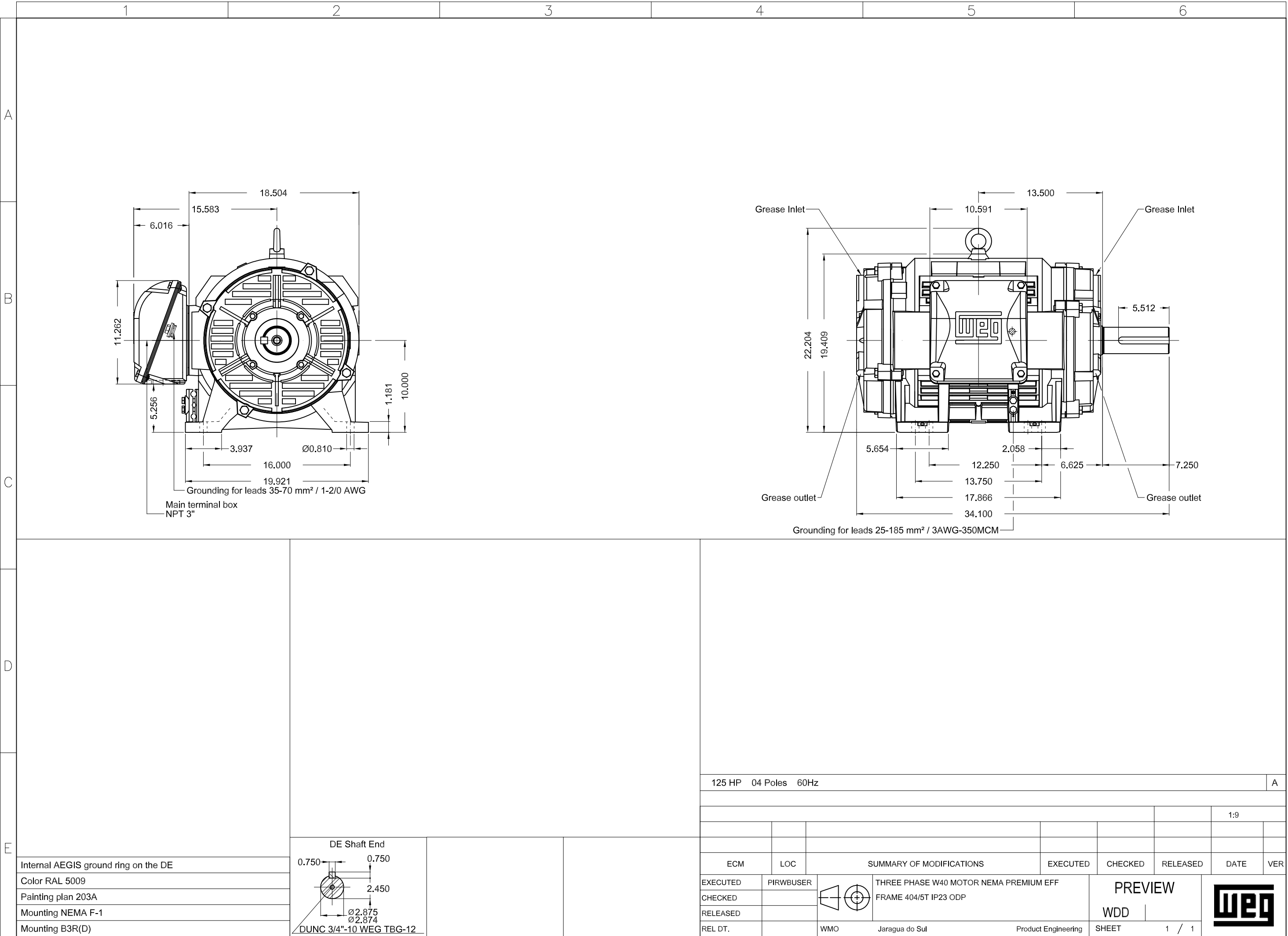


Performance : 230/460 V 60 Hz 4P

Rated current : 276/138 A
LRC : 6.9
Rated torque : 369 ft.lb
Locked rotor torque : 270 %
Breakdown torque : 260 %
Rated speed : 1780 rpm

Moment of inertia (J) : 25.5 sq.ft.lb
Duty cycle : Cont.(S1)
Insulation class : F
Service factor : 1.25
Temperature rise : 80 K
Design : B

Rev.	Changes Summary	Performed	Checked	Date
Performed by				Page 6 / 6
Checked by				
Date				
	10/04/2020			Revision



MODEL 125180T3E405T-W40G

MADE IN BRAZIL

14272925


W40 NEMA
CC029A Premium

Inverter Duty Motor


 3PT9
 LISTED

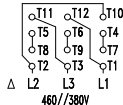
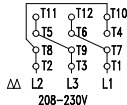
IEC 60034-1

MOD.T01#FOXON


 C US
 Energy Verified

For 60Hz use on PWM, VT 1000:1, CT 2:1, 1.0SF

PH 3	FR 404/5T	HP(kW) 125.0(90.0)	Hz 60
V 230/460	A 276/138	RPM 1780	DES B
NEMA NOM EFF	95.4 %	INS. CL. F Δ T 80 K	IP23
ENCL ODP	DUTY	CONT.	AMB. 40°C
CODE G	PF 0.86	SF 1.25	SFA 345/173
USABLE @208V	305 A	SF 1.15	SFA 351
100HP 75kW 50Hz 380V	138A 1480RPM	SF1.00 EFF 95.0% (IE3)	


 → 6316-C3(34g)
 → 6212-Z-C3(13g)

 MOBIL POLYREX EM
 20000 h

ALT 1000 m.a.s.l. 1030 Lbs