

DATA SHEET

Three Phase Induction Motor - Squirrel Cage



Customer :

Product line : W40 JP Pump High Efficiency
Three-Phase

Product code : 14827993

Catalog # : 10036OP3VFP365JPV-W4

Frame : 364/5JP
Output : 100 HP (75 kW)
Poles : 2
Frequency : 60 Hz
Rated voltage : 200/400 V
Rated current : 265/132 A
L. R. Amperes : 1508/754 A
LRC : 5.7x(Code F)
No load current : 59.8/29.9 A
Rated speed : 3550 rpm
Slip : 1.39 %
Rated torque : 148 ft.lb
Locked rotor torque : 170 %
Breakdown torque : 229 %
Insulation class : F
Service factor : 1.15
Moment of inertia (J) : 6.80 sq.ft.lb
Design : B

Locked rotor time : 27s (cold) 15s (hot)
Temperature rise : 80 K
Duty cycle : Cont.(S1)
Ambient temperature : -20°C to +40°C
Altitude : 1000 m.a.s.l.
Protection degree : IP23
Cooling method : IC01 - ODP
Mounting : W-6
Rotation¹ : Both (CW and CCW)
Starting method : Direct On Line
Approx. weight³ : 746 lb

Output	25%	50%	75%	100%
--------	-----	-----	-----	------

Efficiency (%)	92.2	92.4	93.0	93.0
Power Factor	0.58	0.80	0.85	0.88

Foundation loads

Max. traction : 793 lb
Max. compression : 1539 lb

	Drive end	Non drive end
Bearing type	6314 C3	6212 Z C3
Sealing	Without Bearing Seal	Without Bearing Seal
Lubrication interval	7209 h	12143 h
Lubricant amount	27 g	13 g
Lubricant type	Mobil Polyrex EM	

Notes

This revision replaces and cancel the previous one, which must be eliminated.

- (1) Looking the motor from the shaft end.
- (2) Measured at 1m and with tolerance of +3dB(A).
- (3) Approximate weight subject to changes after manufacturing process.
- (4) At 100% of full load.

These are average values based on tests with sinusoidal power supply, subject to the tolerances stipulated in NEMA MG-1.

Rev.	Changes Summary	Performed	Checked	Date
Performed by		Page 1 / 6		
Checked by				
Date	10/04/2020			
		Revision		

TORQUE AND CURRENT VS SPEED CURVE

Three Phase Induction Motor - Squirrel Cage

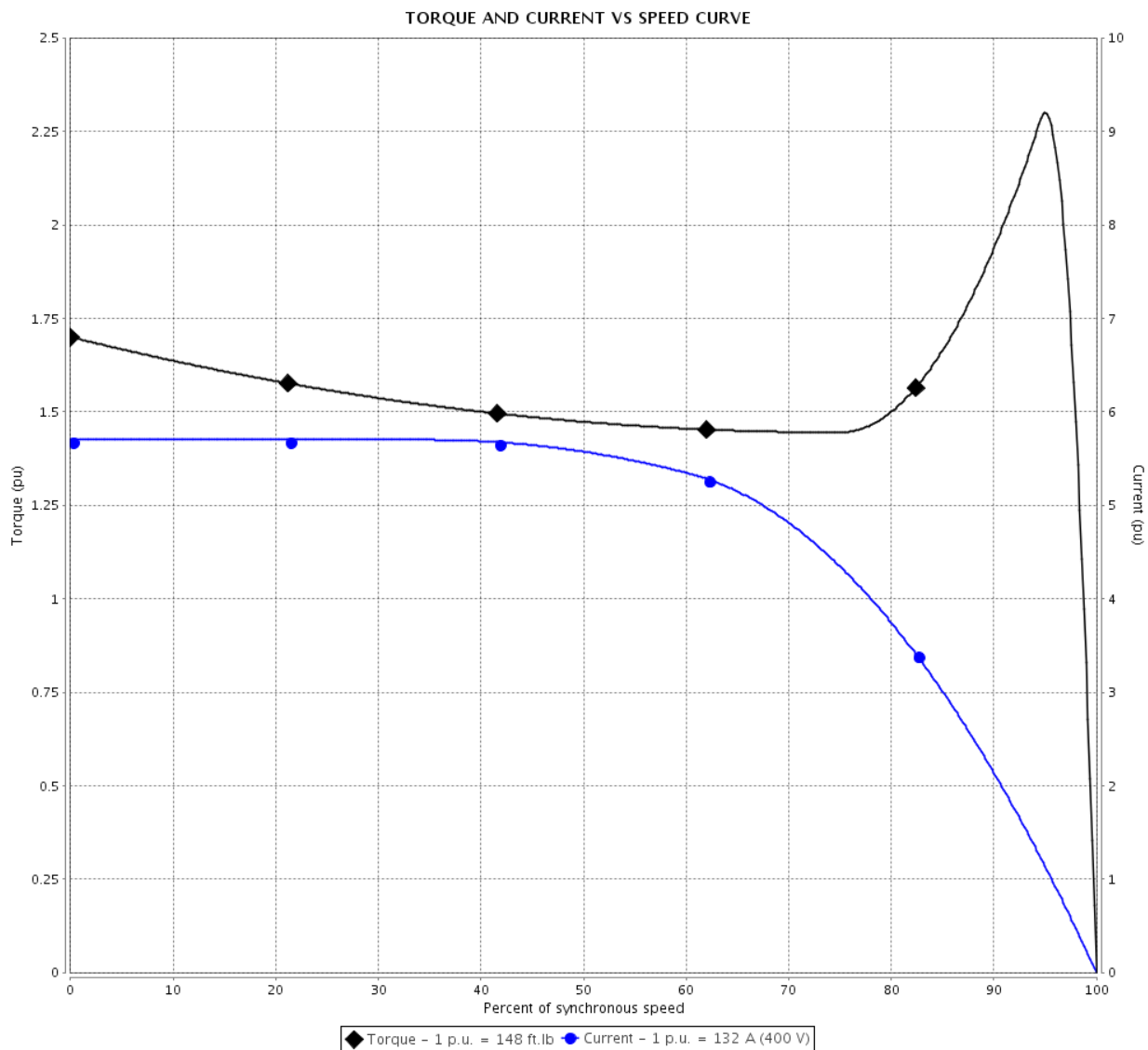


Customer :

Product line : W40 JP Pump High Efficiency
Three-Phase

Product code : 14827993

Catalog # : 10036OP3VFP365JPV-W4



Performance : 200/400 V 60 Hz 2P

Rated current : 265/132 A
LRC : 5.7
Rated torque : 148 ft.lb
Locked rotor torque : 170 %
Breakdown torque : 229 %
Rated speed : 3550 rpm

Moment of inertia (J) : 6.80 sq.ft.lb
Duty cycle : Cont.(S1)
Insulation class : F
Service factor : 1.15
Temperature rise : 80 K
Design : B

Locked rotor time : 27s (cold) 15s (hot)

Rev.	Changes Summary	Performed	Checked	Date
Performed by		<div>Page 2 / 6</div> <div>Revision</div>		
Checked by				
Date	10/04/2020			

LOAD PERFORMANCE CURVE

Three Phase Induction Motor - Squirrel Cage

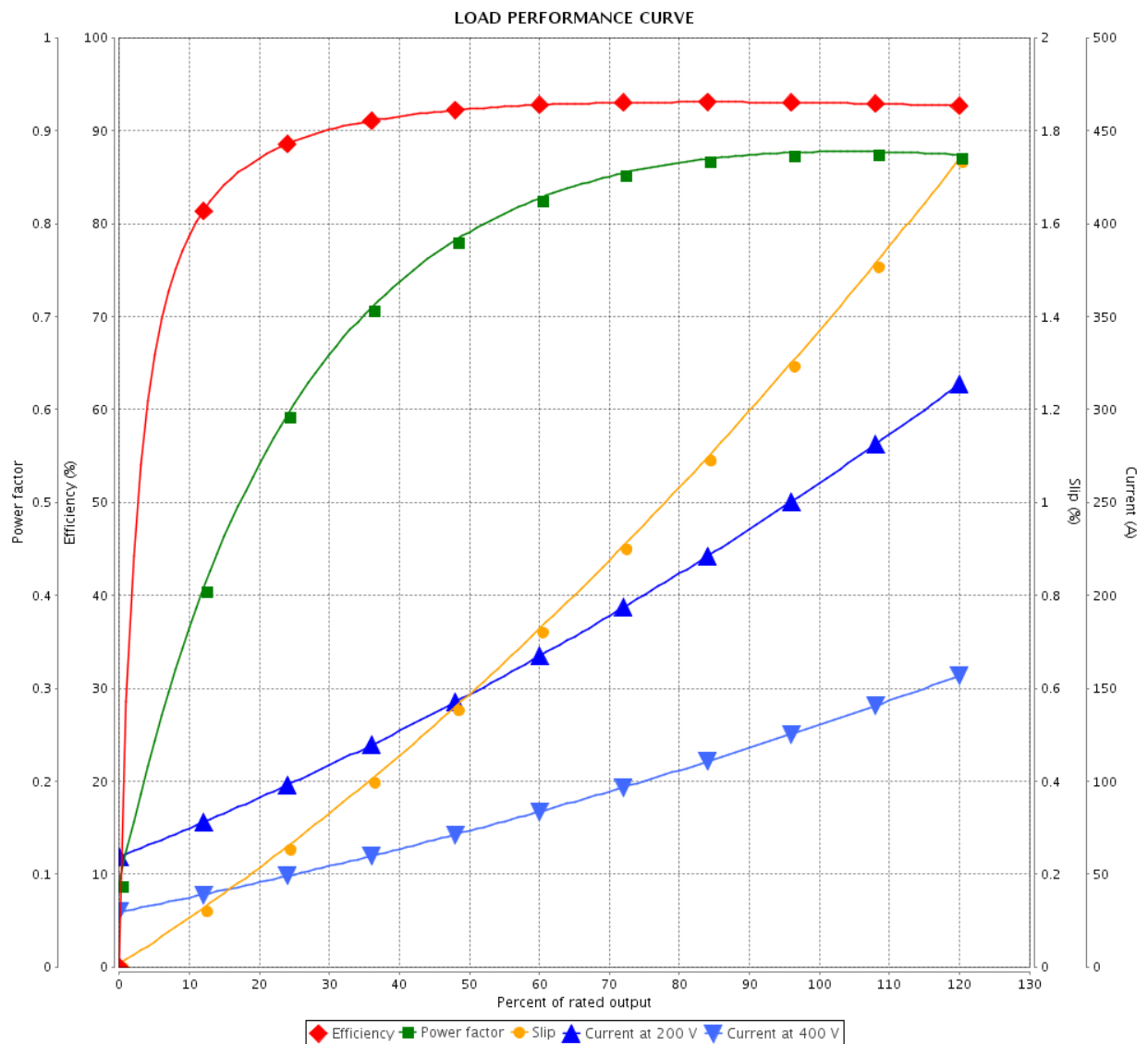


Customer :

Product line : W40 JP Pump High Efficiency
Three-Phase

Product code : 14827993

Catalog # : 10036OP3VFP365JPV-W4



Performance : 200/400 V 60 Hz 2P

Rated current : 265/132 A
LRC : 5.7
Rated torque : 148 ft.lb
Locked rotor torque : 170 %
Breakdown torque : 229 %
Rated speed : 3550 rpm

Moment of inertia (J) : 6.80 sq.ft.lb
Duty cycle : Cont.(S1)
Insulation class : F
Service factor : 1.15
Temperature rise : 80 K
Design : B

Rev.	Changes Summary	Performed	Checked	Date
Performed by				Page 3 / 6
Checked by				
Date				
10/04/2020				Revision

THERMAL LIMIT CURVE

Three Phase Induction Motor - Squirrel Cage



Customer :

Product line : W40 JP Pump High Efficiency
Three-Phase

Product code : 14827993

Catalog # : 10036OP3VFP365JPV-W4

Performance : 200/400 V 60 Hz 2P

Rated current : 265/132 A
LRC : 5.7
Rated torque : 148 ft.lb
Locked rotor torque : 170 %
Breakdown torque : 229 %
Rated speed : 3550 rpm

Moment of inertia (J) : 6.80 sq.ft.lb
Duty cycle : Cont.(S1)
Insulation class : F
Service factor : 1.15
Temperature rise : 80 K
Design : B

Heating constant

Cooling constant

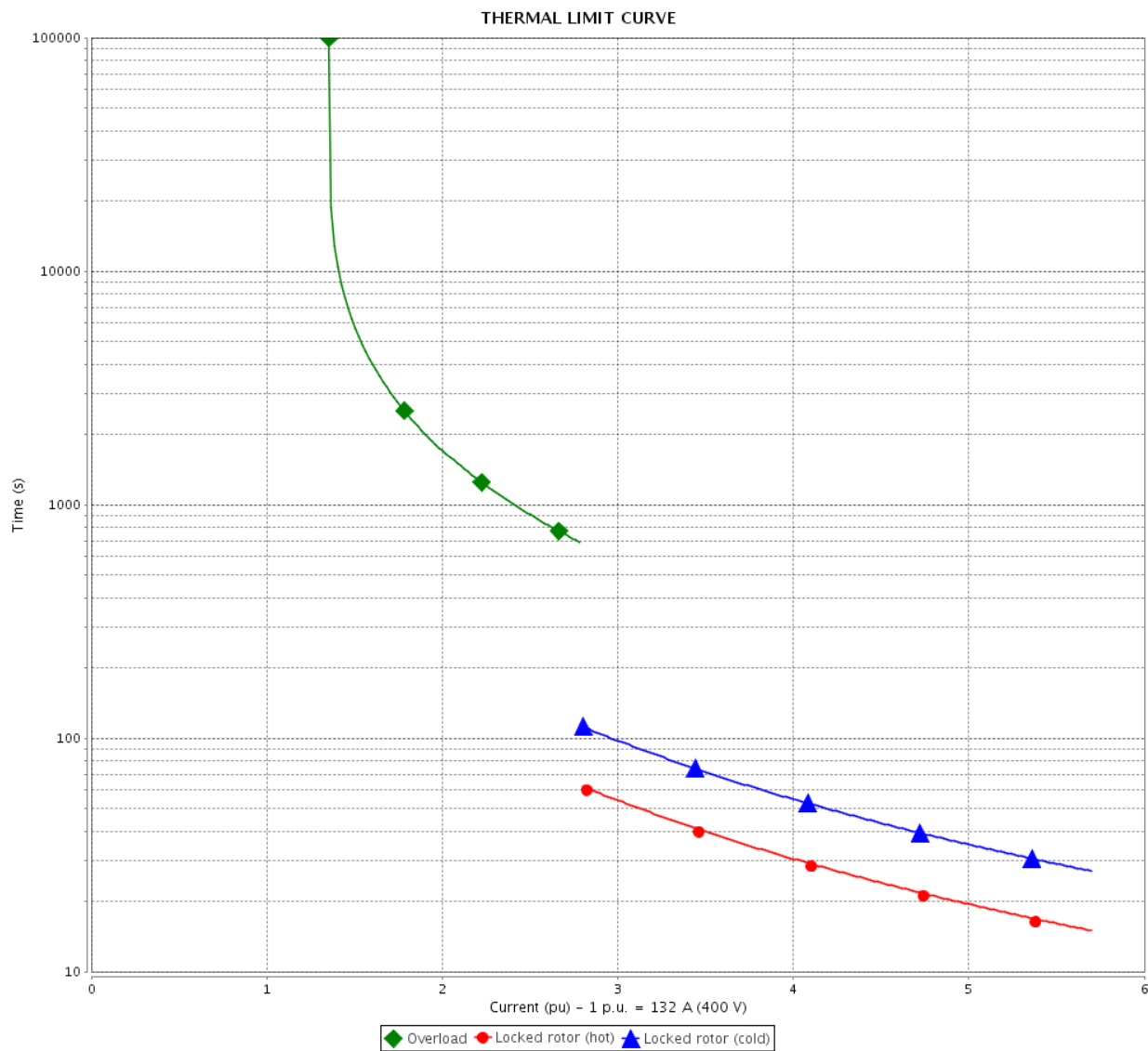
Rev.	Changes Summary		Performed	Checked	Date
Performed by			Page		Revision
Checked by					
Date	10/04/2020				

THERMAL LIMIT CURVE

Three Phase Induction Motor - Squirrel Cage



Customer : _____



Rev.	Changes Summary		Performed	Checked	Date
Performed by					
Checked by					
Date	10/04/2020				
				Page 5 / 6	Revision

VFD OPERATION CURVE

Three Phase Induction Motor - Squirrel Cage

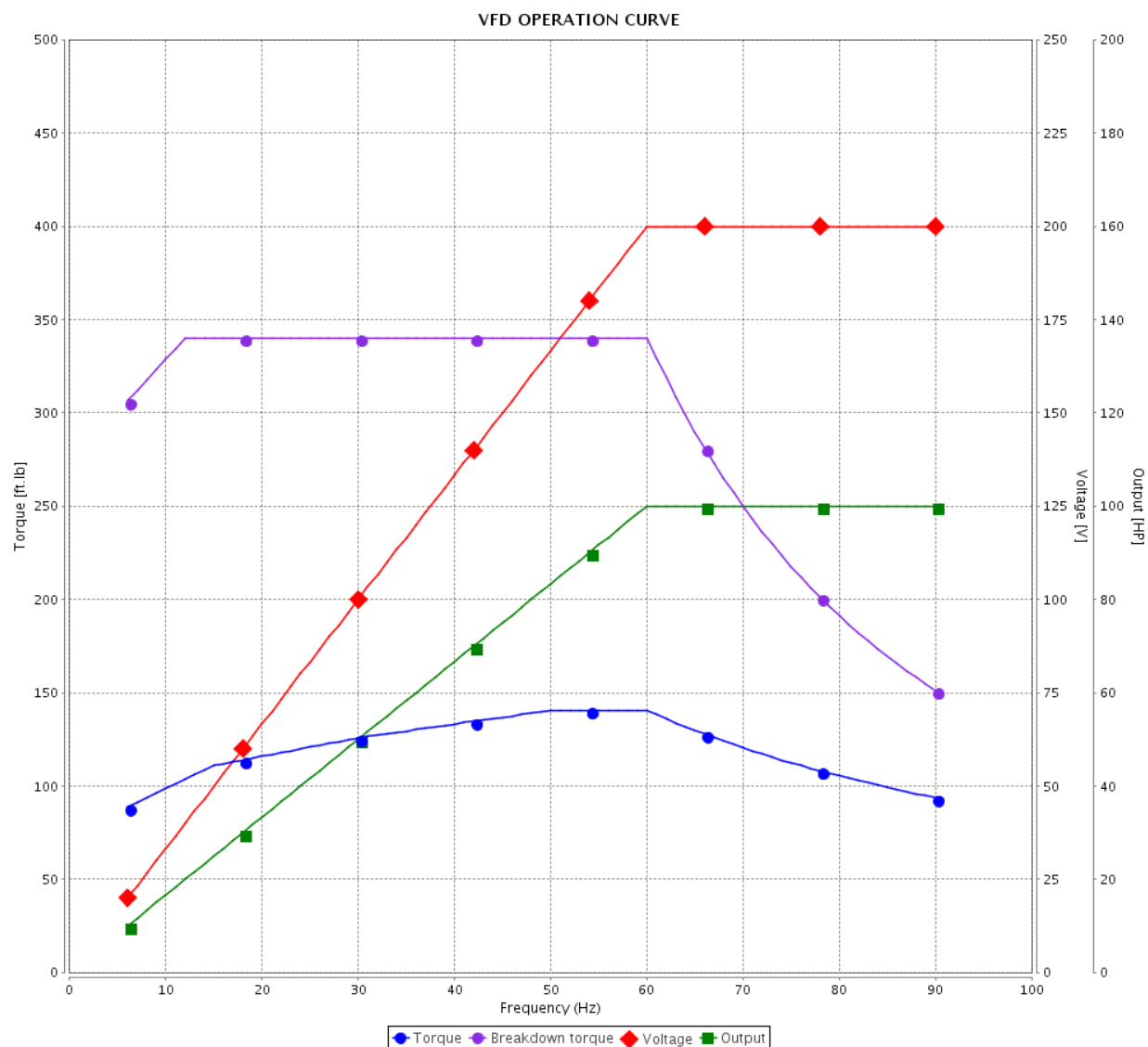


Customer :

Product line : W40 JP Pump High Efficiency
Three-Phase

Product code : 14827993

Catalog # : 10036OP3VFP365JPV-W4

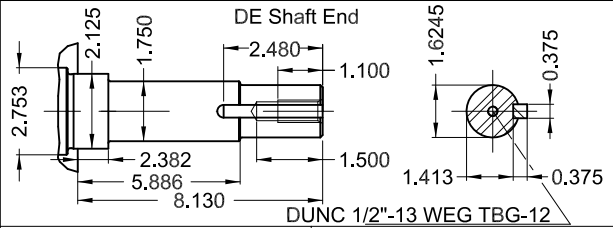
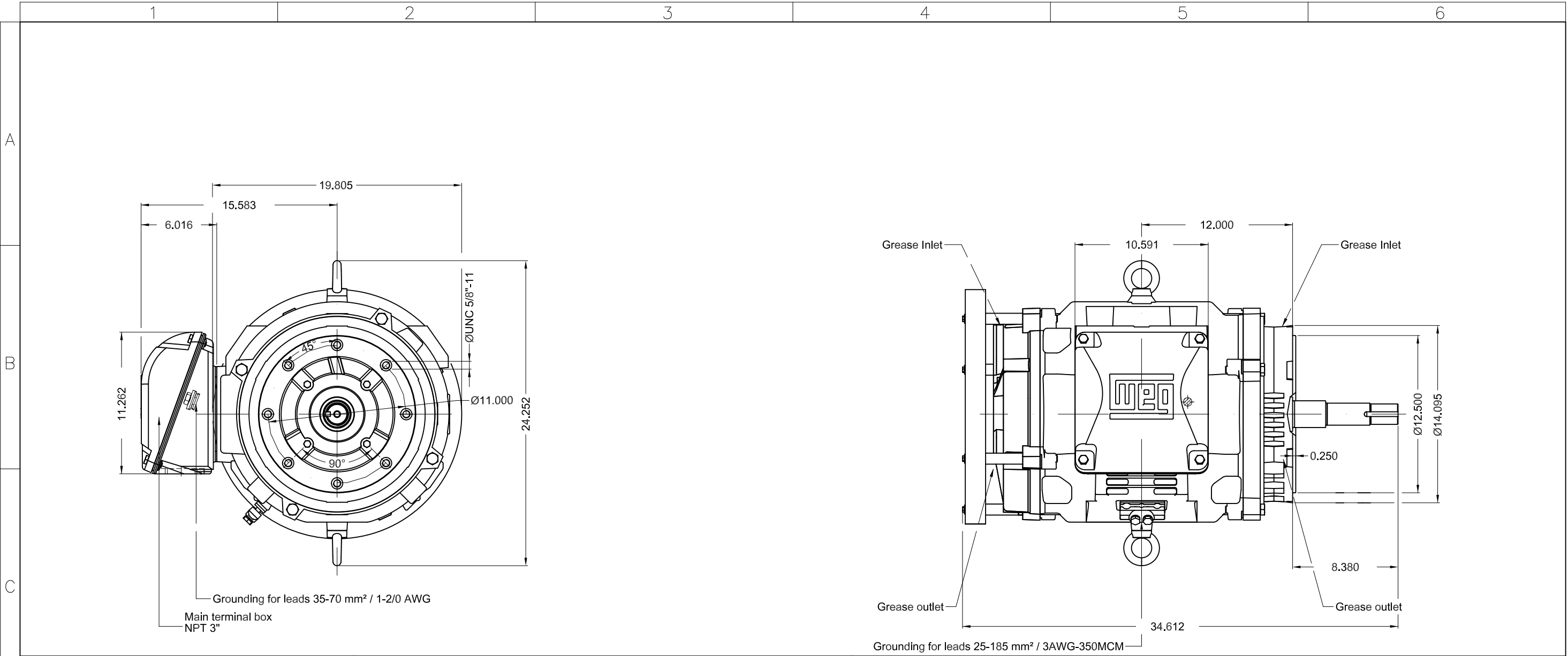


Performance : 200/400 V 60 Hz 2P

Rated current : 265/132 A
LRC : 5.7
Rated torque : 148 ft.lb
Locked rotor torque : 170 %
Breakdown torque : 229 %
Rated speed : 3550 rpm

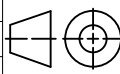

Moment of inertia (J) : 6.80 sq.ft.lb
Duty cycle : Cont.(S1)
Insulation class : F
Service factor : 1.15
Temperature rise : 80 K
Design : B

Rev.	Changes Summary		Performed	Checked	Date
Performed by				Page	Revision
Checked by				6 / 6	
Date					



100 HP 02 Poles 60Hz A

1:8

ECM	LOC	SUMMARY OF MODIFICATIONS			EXECUTED	CHECKED	RELEASED	DATE	VER
EXECUTED	PIRWBUSER		THREE PHASE W40 MOTOR HIGH EFF FRAME 364/5JP IP23 ODP			PREVIEW			
CHECKED						WDD			
RELEASED									
REL DT.		WMO	Jaragua do Sul	Product Engineering	SHEET	1 / 1			

Color RAL 3002
Painting plan 203A
Mounting NEMA W-6
Mounting V18

MODEL 100360P3VFP365JPV-W4
MADE IN BRAZIL
14827993



Inverter Duty Motor



MOD.T01#FOX0H



For use on PWM, VT 1000:1, CT 2:1, 1.0SF

PH 3	FR 364/5JP	HP(kW) 100.0(75.0)	Hz 60		
V 200/400	A 265/132	IP23			
NEMA NOM EFF	93.0 %	RPM 3550			
ENCL ODP	DUTY CONT.	INS. CL. F ΔT 80 K			
PF 0.88	DES B	CODE F	AMB. 40°C	→ 6314-C3(27g)	MOBIL POLYREX EM
SF 1.15	SFA 305/152	ALT 1000 m.a.s.l.		→ 6212-Z-C3(13g)	7209 h
				745	Lbs