

DATA SHEET

Single Phase Induction Motor - Squirrel Cage



Customer :

Product line : Auger Drive Single-Phase

Product code : 14512846
Catalog # : 7518ES1RAD56NZ

| | | | |
|-----------------------|----------------------|-----------------------------|-----------------------|
| Frame | : B56N | Locked rotor time | : 10s (cold) 6s (hot) |
| Output | : 0.75 HP (0.550 kW) | Temperature rise | : 80 K |
| Poles | : 4 | Duty cycle | : Cont.(S1) |
| Frequency | : 60 Hz | Ambient temperature | : -20°C to +40°C |
| Rated voltage | : 115/230 V | Altitude | : 1000 m.a.s.l. |
| Rated current | : 10.6/5.30 A | Protection degree | : IP55 |
| L. R. Amperes | : 65.7/32.9 A | Cooling method | : IC411 - TEFC |
| LRC | : 6.2x(Code M) | Mounting | : F-1 |
| No load current | : 8.00/4.00 A | Rotation ¹ | : Both (CW and CCW) |
| Rated speed | : 1745 rpm | Noise level ² | : 55.0 dB(A) |
| Slip | : 3.06 % | Starting method | : Direct On Line |
| Rated torque | : 2.26 ft.lb | Approx. weight ³ | : 27.6 lb |
| Locked rotor torque | : 300 % | | |
| Breakdown torque | : 250 % | | |
| Insulation class | : B | | |
| Service factor | : 1.15 | | |
| Moment of inertia (J) | : 0.0982 sq.ft.lb | | |

| | | | | | |
|----------------|------|------|------|------|------------------|
| Output | 25% | 50% | 75% | 100% | Foundation loads |
| Efficiency (%) | 56.2 | 58.5 | 66.0 | 68.5 | Max. traction |
| Power Factor | 0.26 | 0.47 | 0.58 | 0.66 | Max. compression |

| | Drive end | Non drive end |
|----------------------|------------------|---------------|
| Bearing type | : 6203 ZZ | : 6203 ZZ |
| Sealing | : V'Ring | : V'Ring |
| Lubrication interval | : - | : - |
| Lubricant amount | : - | : - |
| Lubricant type | Mobil Polyrex EM | |

Notes

This revision replaces and cancel the previous one, which must be eliminated.

- (1) Looking the motor from the shaft end.
- (2) Measured at 1m and with tolerance of +3dB(A).
- (3) Approximate weight subject to changes after manufacturing process.
- (4) At 100% of full load.

These are average values based on tests with sinusoidal power supply, subject to the tolerances stipulated in NEMA MG-1.

| Rev. | Changes Summary | Performed | Checked | Date |
|--------------|-----------------|---------------------------|---------|------|
| | | | | |
| Performed by | | Page 1 / 2 Revision | | |
| Checked by | | | | |
| Date | 10/04/2020 | | | |

LOAD PERFORMANCE CURVE

Single Phase Induction Motor - Squirrel Cage



Customer :

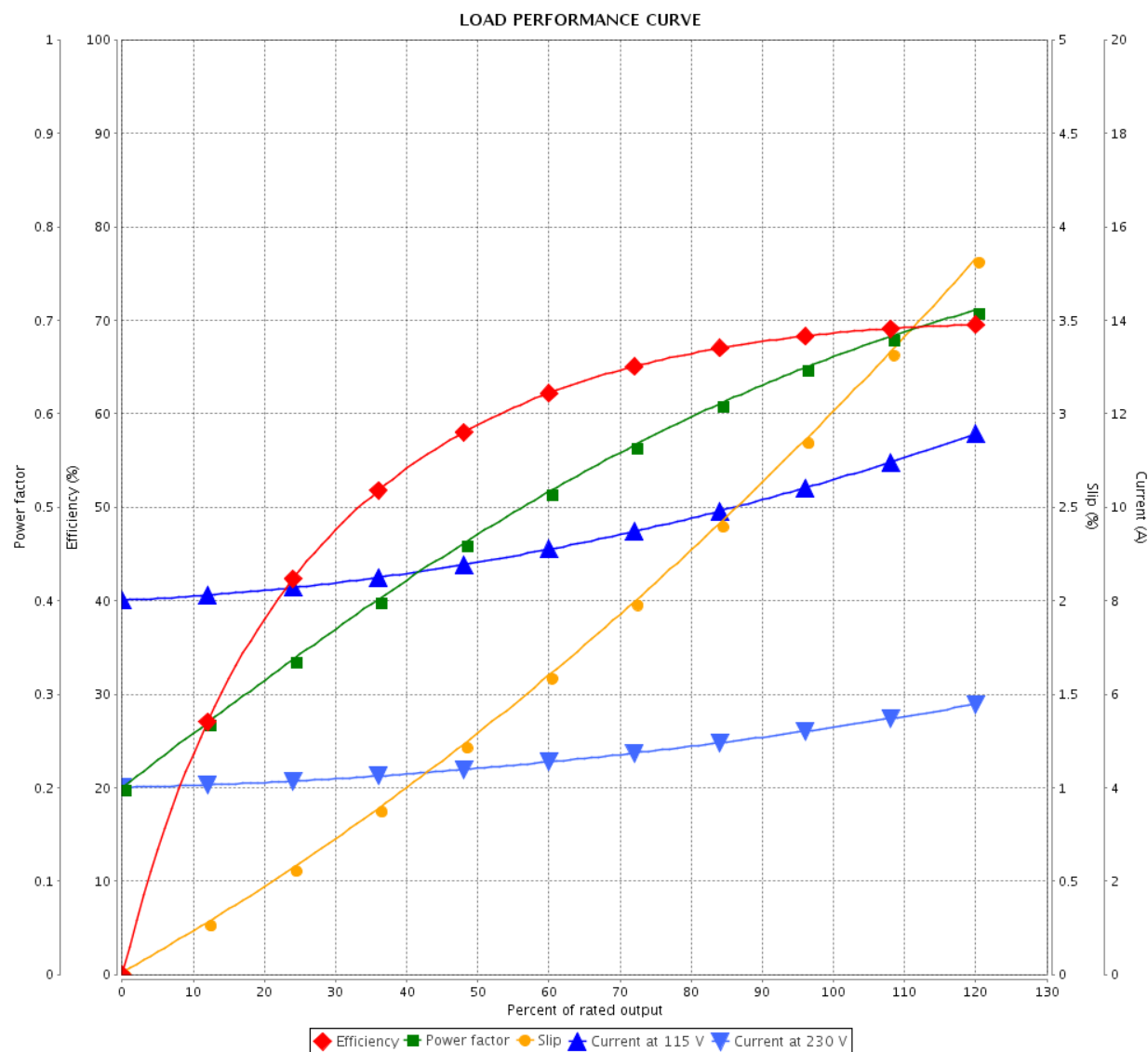
Product line : Auger Drive Single-Phase

Product code :

14512846

Catalog # :

.7518ES1RAD56NZ



Performance : 115/230 V 60 Hz 4P

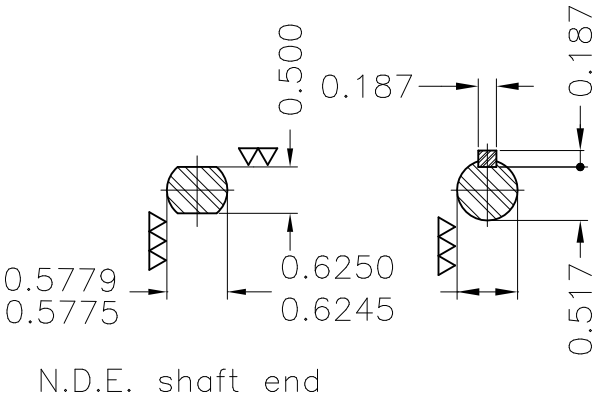
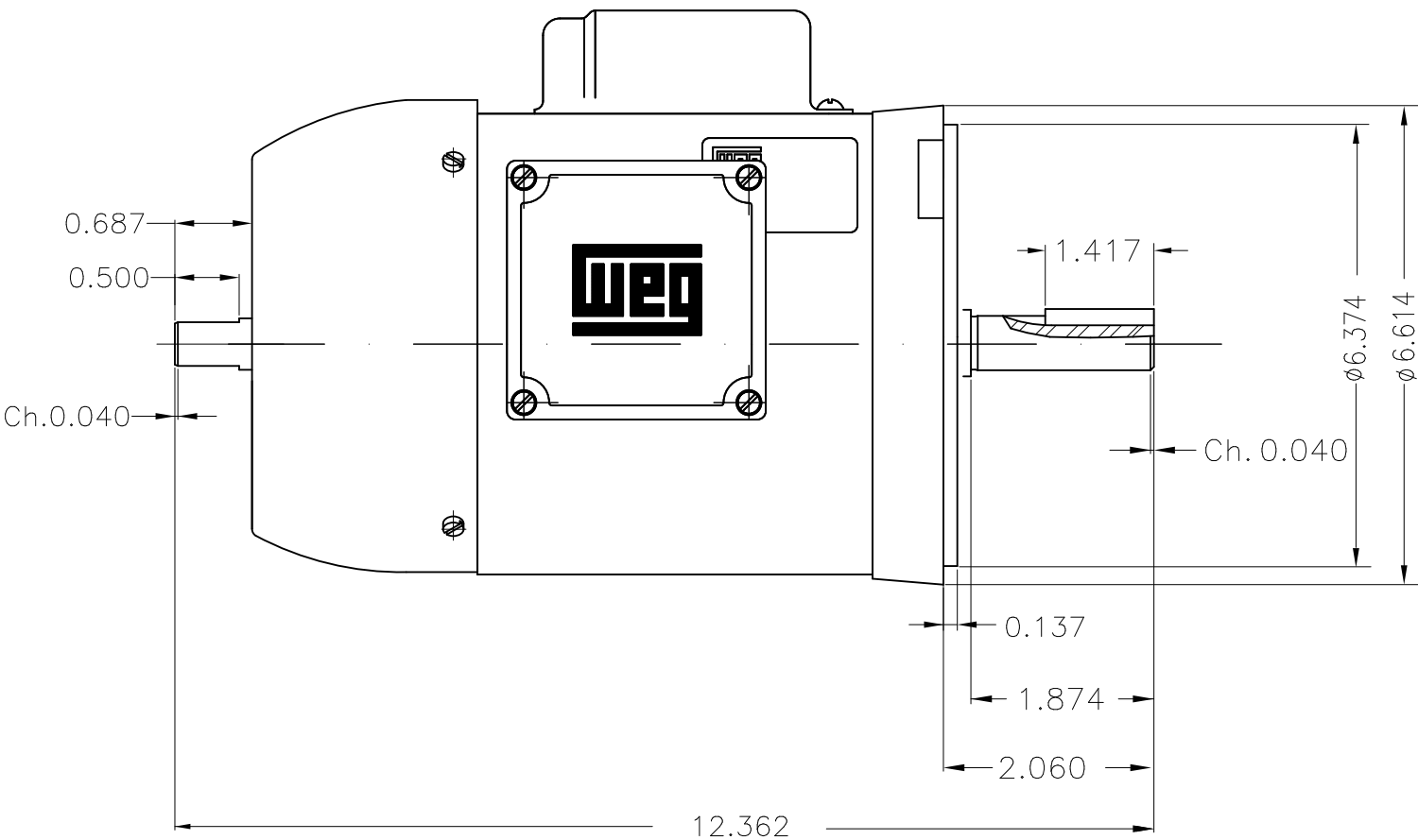
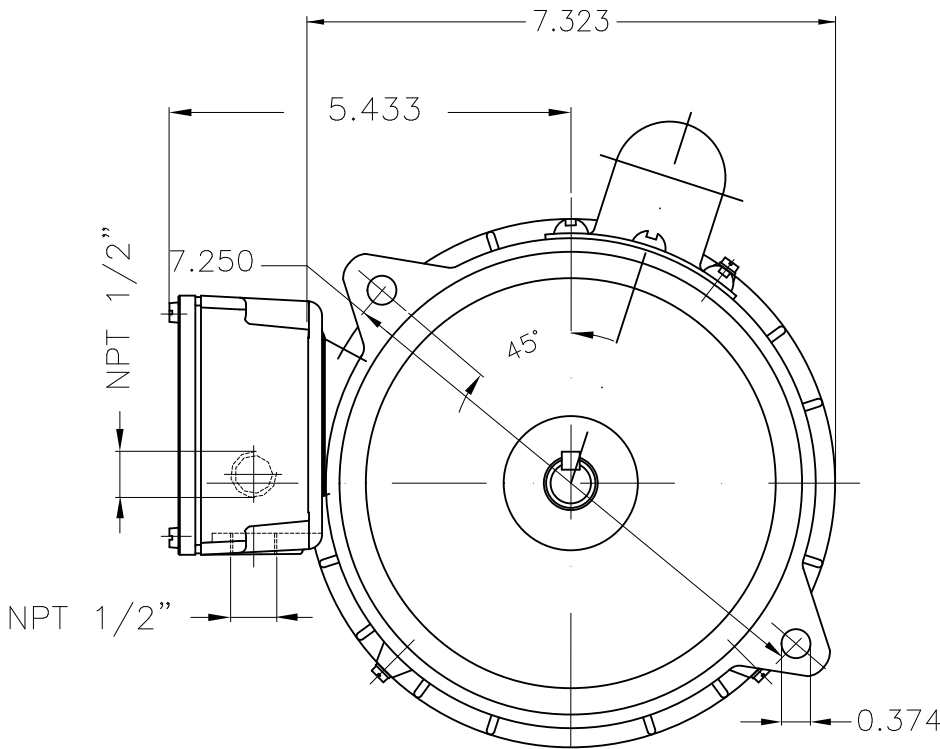
Rated current : 10.6/5.30 A
 LRC : 6.2
 Rated torque : 2.26 ft.lb
 Locked rotor torque : 300 %
 Breakdown torque : 250 %
 Rated speed : 1745 rpm

Moment of inertia (J) : 0.0982 sq.ft.lb
 Duty cycle : Cont.(S1)
 Insulation class : B
 Service factor : 1.15
 Temperature rise : 80 K



| Rev. | Changes Summary | | Performed | Checked | Date |
|--------------|-----------------|--|-----------|---------|----------|
| | | | | | |
| Performed by | | | | Page | Revision |
| Checked by | | | | 2 / 2 | |
| Date | | | | | |

Dimensões em polegada
Dimensions in inches

THIS IS AN UPDATED REVISION, THE
PREVIOUS ONE MUST BE DISREGARDED.



Mounting B14R(D)

| | | | | | | | | |
|----------|------------|---|--------------------------------|---------------------|----------|---|----------|----------|
| | | | | | | | | |
| | | | | | | | | |
| ECM | LOC | SUMMARY OF MODIFICATIONS | | | EXECUTED | CHECKED | RELEASED | DATE VER |
| EXECUTED | USERADMIN |  | SINGLE PHASE MOTOR AUGER DRIVE | | |  | | 1 / 1 |
| CHECKED | | | FRAME B56N IP55 TEFC | | | | | |
| RELEASED | | | WEG code: 14512846 | | | | | |
| REL DT | 10.04.2020 | WMO | Jaragua do Sul | Product Engineering | SHEET | | | |

0.75 HP 04 Poles 60Hz