

DATA SHEET

Three Phase Induction Motor - Squirrel Cage



Customer :					
Product line		: Multimounting IE3 Three-Phase		Product code : 14056445 Catalog # : 00158ET3EAL90LFF-W22	
Frame : 90S/L Output : 2 HP (1.5 kW) Poles : 4 Frequency : 60 Hz Rated voltage : 208-230/460 V Rated current : 6.26-5.66/2.83 A L. R. Amperes : 52.0-47.0/23.5 A LRC : 8.3 No load current : 2.90-3.36/1.68 A Rated speed : 1755 rpm Slip : 2.50 % Rated torque : 5.98 ft.lb Locked rotor torque : 310 % Breakdown torque : 390 % Insulation class : F Service factor : 1.25 Design : N			Locked rotor time : 25s (cold) 14s (hot) Temperature rise : 80 K Duty cycle : S1 Ambient temperature : -20°C to +40°C Altitude : 1000 m.a.s.l. Protection degree : IP55 Cooling method : IC411 - TEFC Mounting : B35L(E) Rotation ¹ : Both (CW and CCW) Noise level ² : 49.0 dB(A) Starting method : Direct On Line Approx. weight ³ : 45.6 lb		
Output	25%	50%	75%	100%	Foundation loads
Efficiency (%)	0.000	82.5	85.5	86.5	Max. traction : 192 lb
Power Factor	0.00	0.55	0.68	0.77	Max. compression : 242 lb
		<u>Drive end</u>		<u>Non drive end</u>	
Bearing type	:	6205 ZZ		6204 ZZ	
Sealing	:	V'Ring		V'Ring	
Lubrication interval	:	-		-	
Lubricant amount	:	-		-	
Lubricant type	:	Mobil Polyrex EM			
Notes					
This revision replaces and cancel the previous one, which must be eliminated. (1) Looking the motor from the shaft end. (2) Measured at 1m and with tolerance of +3dB(A). (3) Approximate weight subject to changes after manufacturing process. (4) At 100% of full load.			These are average values based on tests with sinusoidal power supply, subject to the tolerances stipulated in NEMA MG-1.		
Rev.	Changes Summary			Performed	Checked
Performed by					
Checked by				Page	Revision
Date	13/04/2020			1 / 5	

TORQUE AND CURRENT VS SPEED CURVE

Three Phase Induction Motor - Squirrel Cage



Customer :

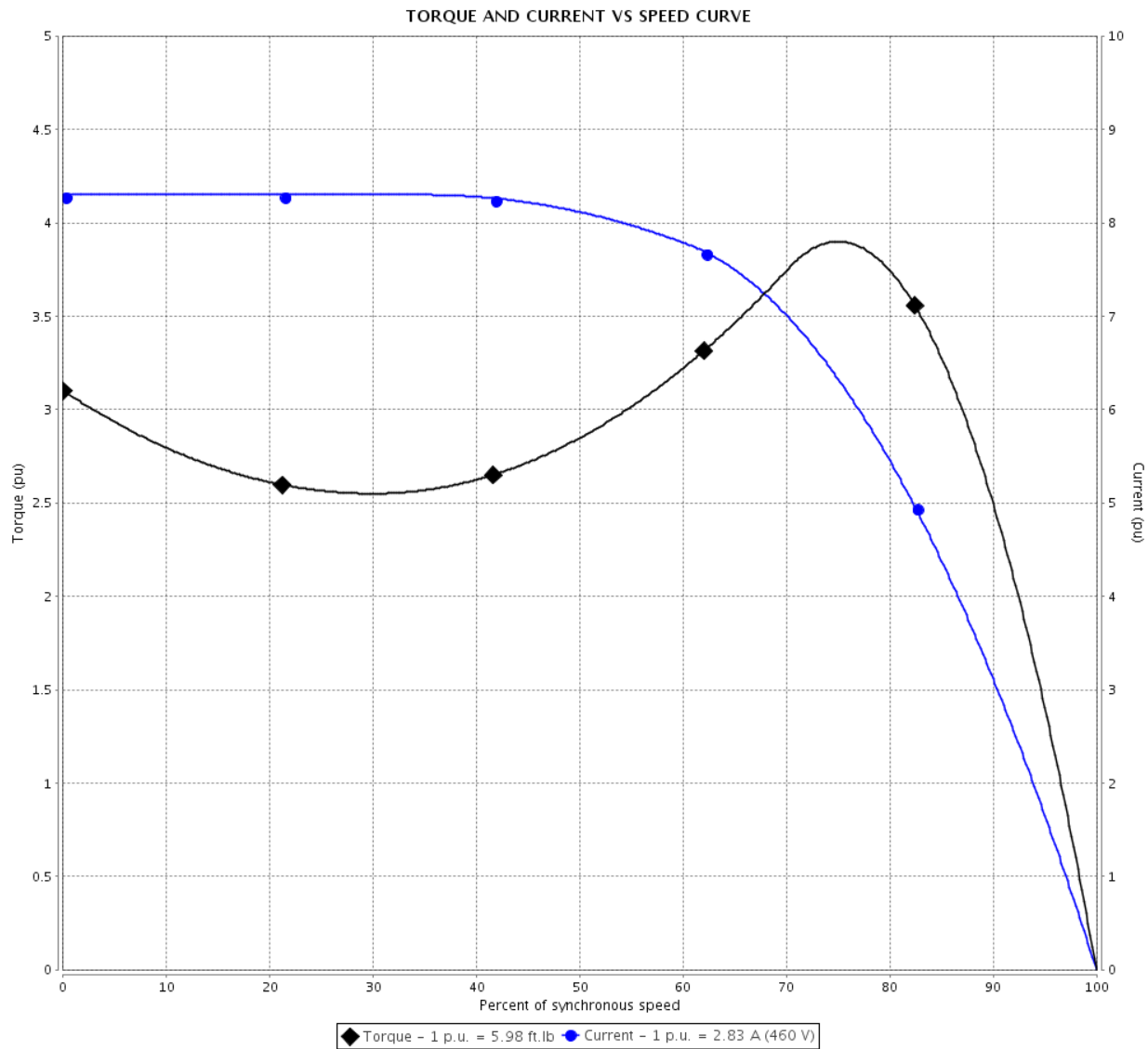
Product line : Multimounting IE3 Three-Phase

Product code :

14056445

Catalog # :

00158ET3EAL90LFF-W22



Performance : 208-230/460 V 60 Hz 4P

Rated current : 6.26-5.66/2.83 A
LRC : 8.3
Rated torque : 5.98 ft.lb
Locked rotor torque : 310 %
Breakdown torque : 390 %
Rated speed : 1755 rpm

Moment of inertia (J)
Duty cycle : S1
Insulation class : F
Service factor : 1.25
Temperature rise : 80 K
Design : N

Locked rotor time : 25s (cold) 14s (hot)

Rev.	Changes Summary	Performed	Checked	Date
Performed by		Page 2 / 5 Revision		
Checked by				
Date	13/04/2020			

LOAD PERFORMANCE CURVE

Three Phase Induction Motor - Squirrel Cage



Customer :

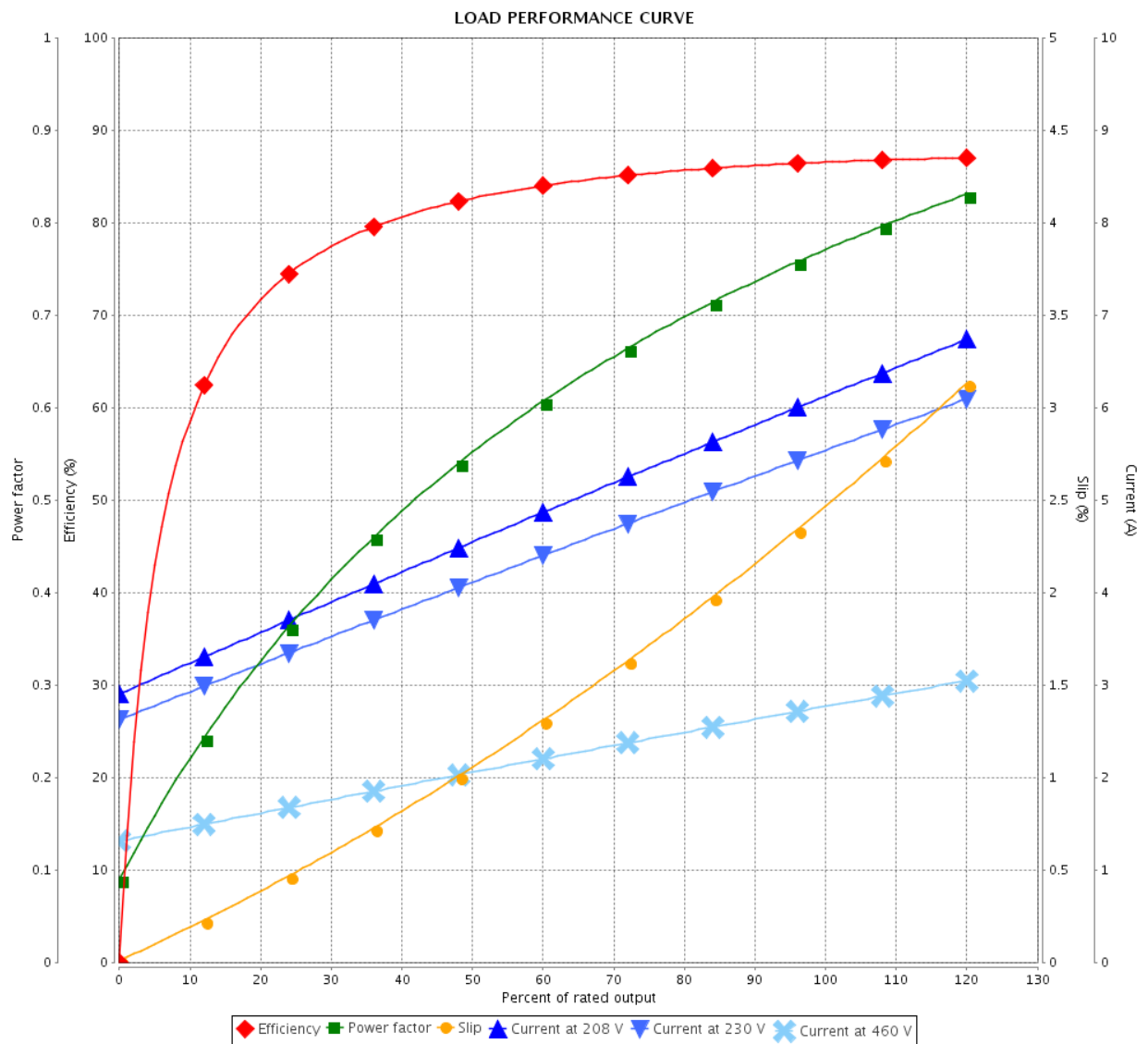
Product line : Multimounting IE3 Three-Phase

Product code :

14056445

Catalog # :

00158ET3EAL90LFF-W22



Performance : 208-230/460 V 60 Hz 4P

Rated current : 6.26-5.66/2.83 A
 LRC : 8.3
 Rated torque : 5.98 ft.lb
 Locked rotor torque : 310 %
 Breakdown torque : 390 %
 Rated speed : 1755 rpm

Moment of inertia (J)
 Duty cycle : S1
 Insulation class : F
 Service factor : 1.25
 Temperature rise : 80 K
 Design : N

Rev.	Changes Summary		Performed	Checked	Date
Performed by			Page		Revision
Checked by					
Date					
	13/04/2020		3 / 5		

This document is exclusive property of WEG S/A. Reprinting is not allowed without written authorization of WEG S/A.

Subject to change without notice

THERMAL LIMIT CURVE

Three Phase Induction Motor - Squirrel Cage



Customer :

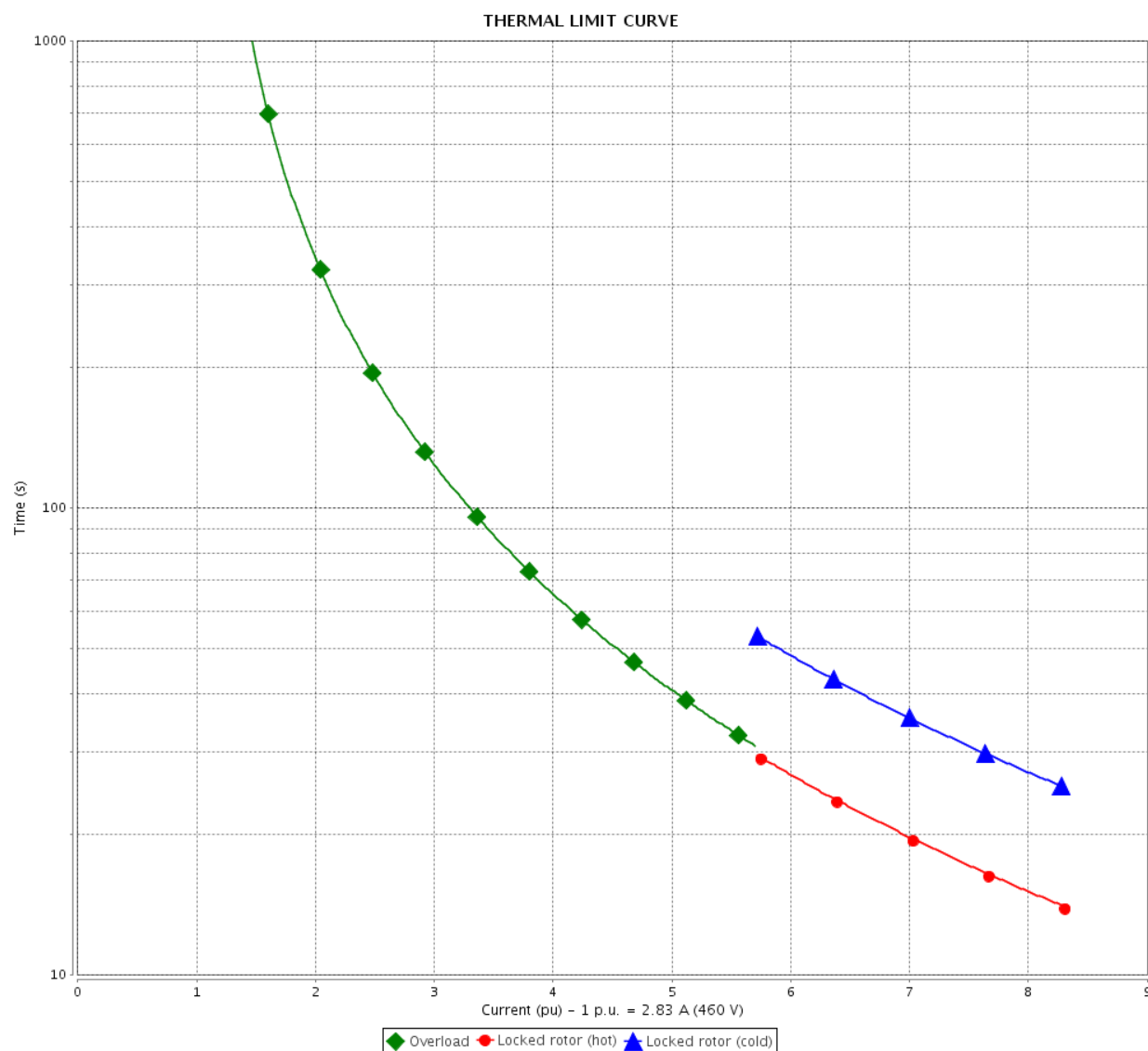
Product line : Multimounting IE3 Three-Phase

Product code :

14056445

Catalog # :

00158ET3EAL90LFF-W22



Performance : 208-230/460 V 60 Hz 4P

Rated current : 6.26-5.66/2.83 A
 LRC : 8.3
 Rated torque : 5.98 ft.lb
 Locked rotor torque : 310 %
 Breakdown torque : 390 %
 Rated speed : 1755 rpm

Moment of inertia (J)
 Duty cycle : S1
 Insulation class : F
 Service factor : 1.25
 Temperature rise : 80 K
 Design : N

Heating constant

Cooling constant

Rev.	Changes Summary	Performed	Checked	Date
Performed by		<div>Page</div> <div>Revision</div>		
Checked by				
Date	13/04/2020			

VFD OPERATION CURVE

Three Phase Induction Motor - Squirrel Cage



Customer :

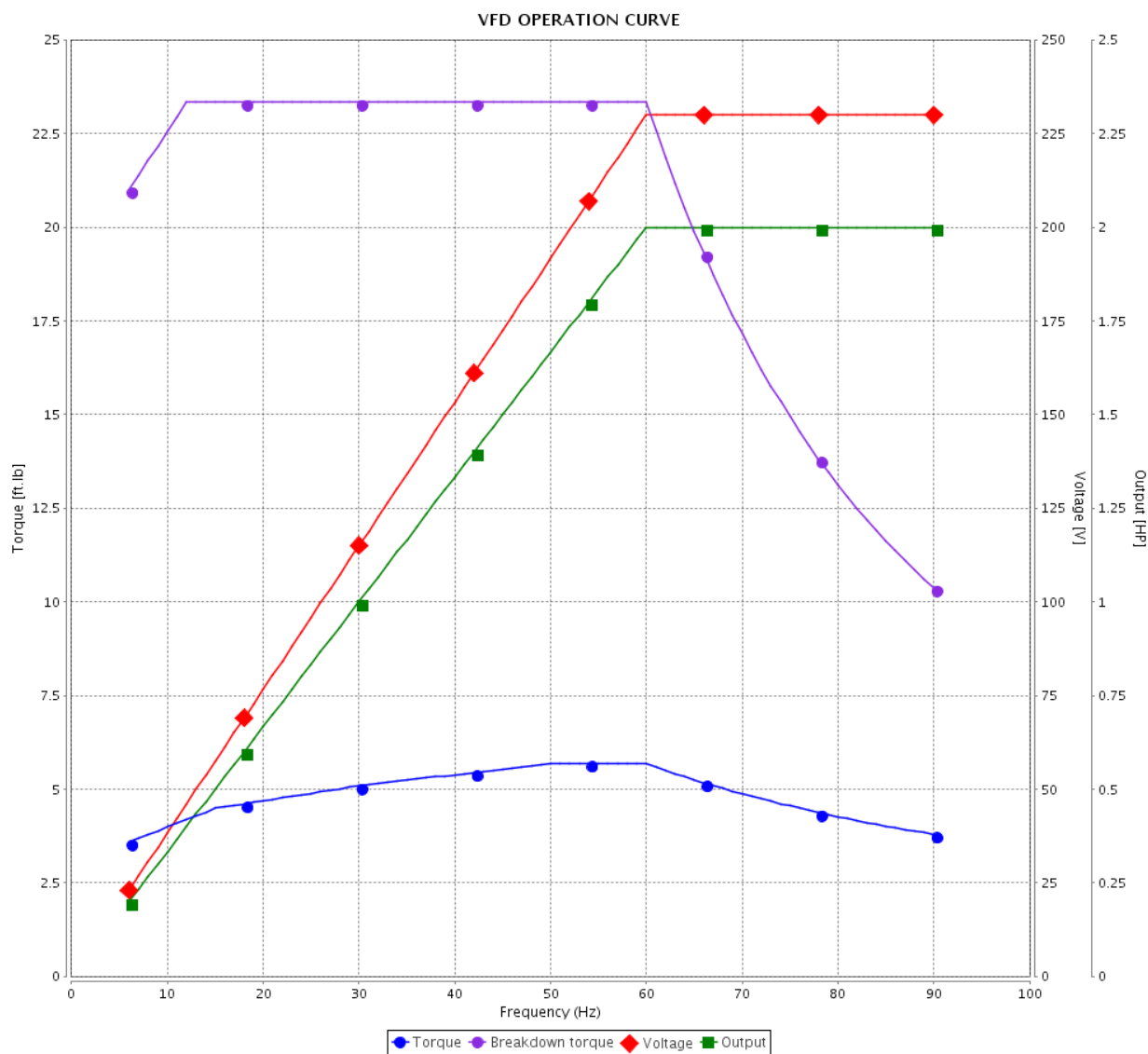
Product line : Multimounting IE3 Three-Phase

Product code :

14056445

Catalog # :

00158ET3EAL90LFF-W22

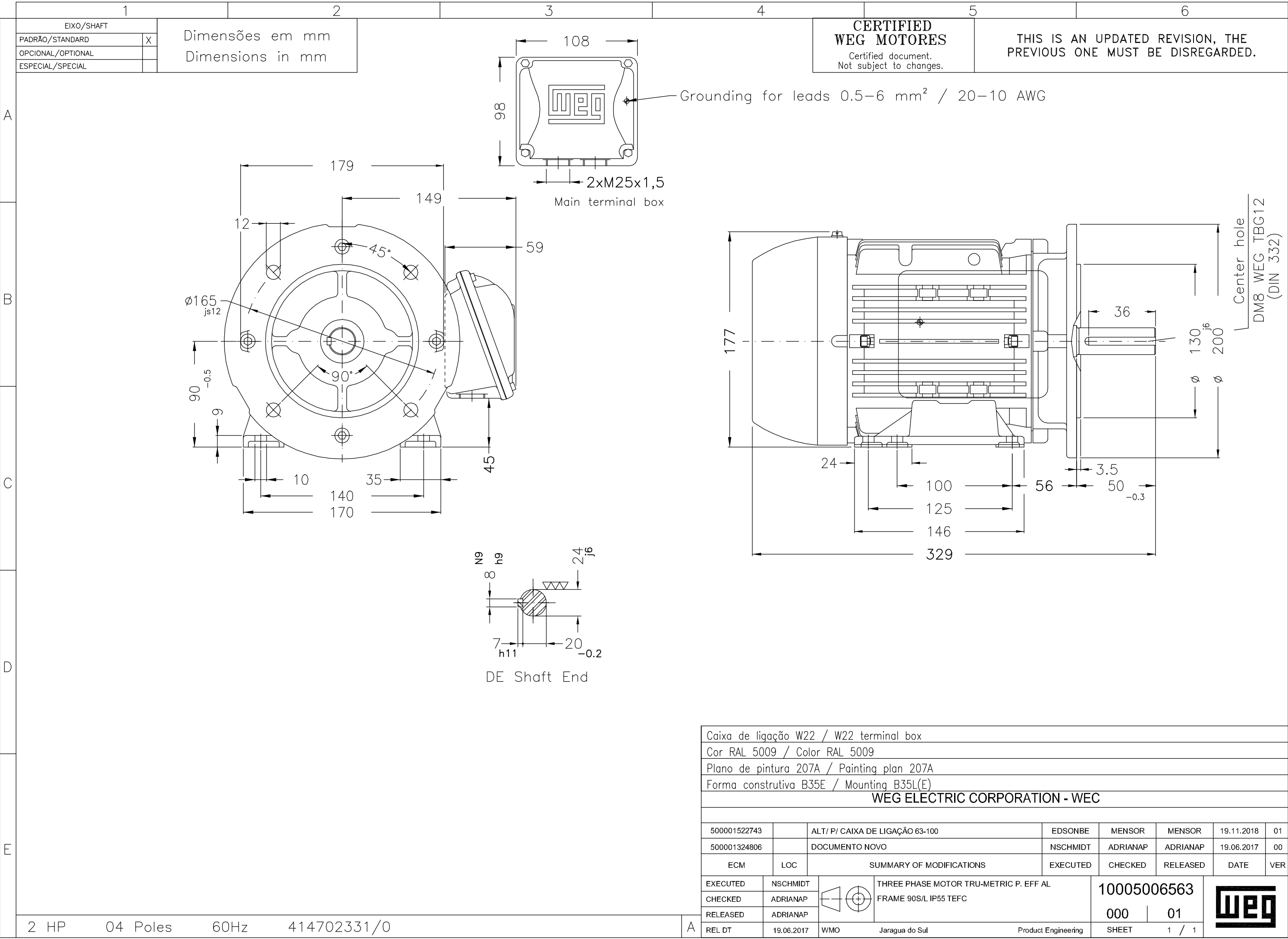


Performance : 208-230/460 V 60 Hz 4P

Rated current : 6.26-5.66/2.83 A
 LRC : 8.3
 Rated torque : 5.98 ft.lb
 Locked rotor torque : 310 %
 Breakdown torque : 390 %
 Rated speed : 1755 rpm

Moment of inertia (J)
 Duty cycle : S1
 Insulation class : F
 Service factor : 1.25
 Temperature rise : 80 K
 Design : N

Rev.	Changes Summary	Performed	Checked	Date
Performed by		Page 5 / 5		
Checked by				
Date	13/04/2020			
		Revision		



UNCONTROLLED COPY

RELEASED

ZME A3



Severe Duty

IE3-86.5%



IEC 60034-1

MODEL 00158ET3EAL90LFF-W22

3 ~ AL90S/L

AMB 40°C

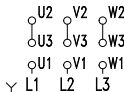
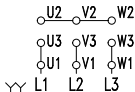
INS CL. F ENCL TEFC TYPE ET IP55 DUTY CONT.

kW(HP)	Hz	VOLTS	RPM	AMPS	PF	SFA
1.5(2.0)	50	380 Y	1440	3.22	0.83	-
		415 Y	1450	3.17	0.77	-
1.5(2.0)	60	208-230 YY	1755	6.26-5.66	0.77	7.20-7.08
		460 Y		2.83		3.49

Hz SF CODE Δt (K) ALT 1000 m.a.s.l.

50	1.00	K	80	NEMA EFF 60Hz DES	
60	1.25	L	80	NOM(%) 86.5	3/4(%) 85.5

RUN CONNECTION



→ 6205-ZZ

MOBIL POLYREX EM

→ 6204-ZZ

50 Lbs

TEMP CODE T3C

Class I, Div. 2, Gr. B, C and D

Class I, Zone 2, IIC

MOD.TE01A0X0\$0000301746



EAC