

DATA SHEET

Three Phase Induction Motor - Squirrel Cage



Customer :				
Product line		: Rolled Steel NEMA Premium Efficiency Three-Phase		Product code : 13733344
				Catalog # : 00318ET3EBM182TC-S
Frame : 182/4TC Output : 3 HP (2.2 kW) Poles : 4 Frequency : 60 Hz Rated voltage : 230/460 V Rated current : 7.62/3.81 A L. R. Amperes : 67.1/33.5 A LRC : 8.8x(Code K) No load current : 4.00/2.00 A Rated speed : 1765 rpm Slip : 1.94 % Rated torque : 8.93 ft.lb Locked rotor torque : 220 % Breakdown torque : 300 % Insulation class : F Service factor : 1.15 Moment of inertia (J) : 0.4017 sq.ft.lb Design : B		Locked rotor time : 32s (cold) 18s (hot) Temperature rise : 80 K Duty cycle : Cont.(S1) Ambient temperature : -20°C to +40°C Altitude : 1000 m.a.s.l. Protection degree : IP55 Cooling method : IC411 - TEFC Mounting : F-1 Rotation ¹ : Both (CW and CCW) Noise level ² : 56.0 dB(A) Starting method : Direct On Line Approx. weight ³ : 106 lb		
Output	50%	75%	100%	Foundation loads
Efficiency (%)	87.5	88.5	89.5	Max. traction : 167 lb
Power Factor	0.61	0.74	0.81	Max. compression : 273 lb
		<u>Drive end</u>	<u>Non drive end</u>	
Bearing type	:	6206 ZZ	6205 ZZ	
Sealing	:	V'Ring	V'Ring	
Lubrication interval	:	-	-	
Lubricant amount	:	-	-	
Lubricant type	:	Mobil Polyrex EM		
Notes USABLE @208V 8.43A SF 1.00 SFA 8.43A				
This revision replaces and cancel the previous one, which must be eliminated. (1) Looking the motor from the shaft end. (2) Measured at 1m and with tolerance of +3dB(A). (3) Approximate weight subject to changes after manufacturing process. (4) At 100% of full load.			These are average values based on tests with sinusoidal power supply, subject to the tolerances stipulated in NEMA MG-1.	
Rev.	Changes Summary		Performed	Checked
Performed by				
Checked by			Page	Revision
Date	13/04/2020		1 / 7	

DATA SHEET

Three Phase Induction Motor - Squirrel Cage



Customer :

Brake information

Voltage: 208-230/460//190/380 V
Brake Torque: 14.8 ft.lb

Rev.	Changes Summary		Performed	Checked	Date
Performed by			Page 2 / 7		Revision
Checked by					
Date	13/04/2020				

TORQUE AND CURRENT VS SPEED CURVE

Three Phase Induction Motor - Squirrel Cage

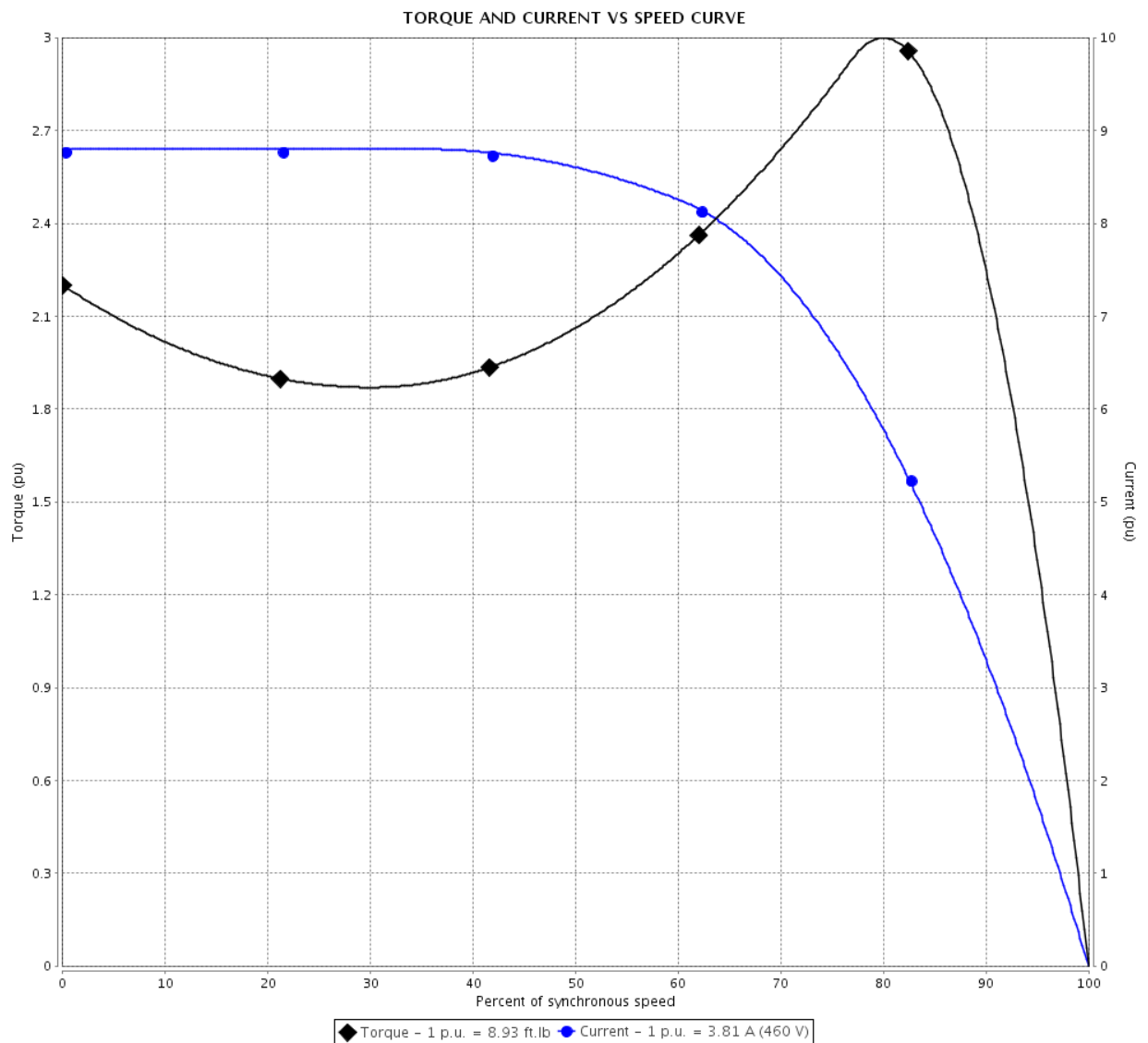


Customer :

Product line : Rolled Steel NEMA Premium
Efficiency Three-Phase

Product code : 13733344

Catalog # : 00318ET3EBM182TC-S



Performance : 230/460 V 60 Hz 4P

Rated current : 7.62/3.81 A
LRC : 8.8
Rated torque : 8.93 ft.lb
Locked rotor torque : 220 %
Breakdown torque : 300 %
Rated speed : 1765 rpm

Moment of inertia (J) : 0.4017 sq.ft.lb
Duty cycle : Cont.(S1)
Insulation class : F
Service factor : 1.15
Temperature rise : 80 K
Design : B

Locked rotor time : 32s (cold) 18s (hot)

Rev.	Changes Summary	Performed	Checked	Date
Performed by		Page 3 / 7		
Checked by				
Date	13/04/2020			
		Revision		

LOAD PERFORMANCE CURVE

Three Phase Induction Motor - Squirrel Cage

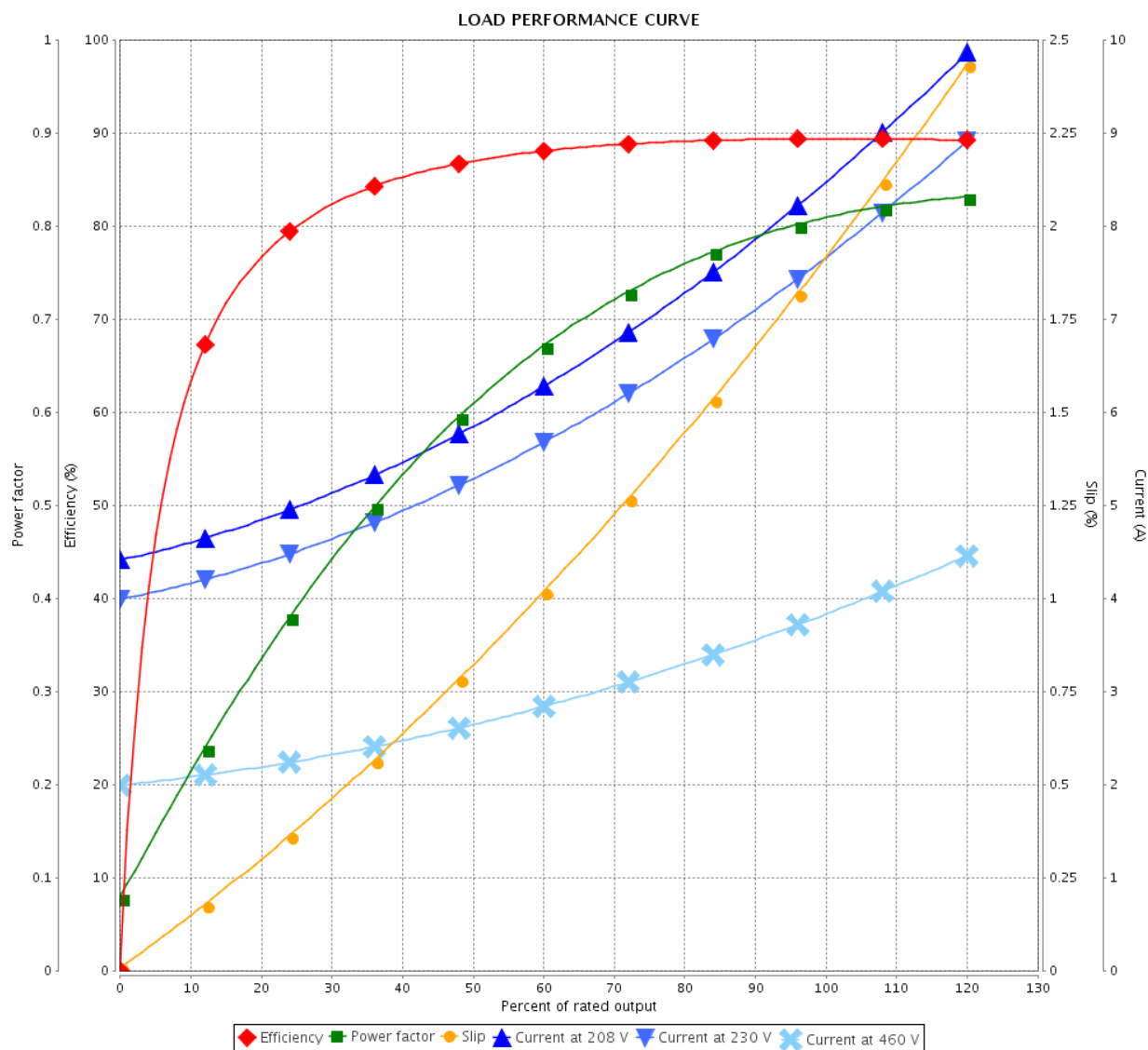


Customer :

Product line : Rolled Steel NEMA Premium
Efficiency Three-Phase

Product code : 13733344

Catalog # : 00318ET3EBM182TC-S



Performance : 230/460 V 60 Hz 4P

Rated current : 7.62/3.81 A
LRC : 8.8
Rated torque : 8.93 ft.lb
Locked rotor torque : 220 %
Breakdown torque : 300 %
Rated speed : 1765 rpm

Moment of inertia (J) : 0.4017 sq.ft.lb
Duty cycle : Cont.(S1)
Insulation class : F
Service factor : 1.15
Temperature rise : 80 K
Design : B

Rev.	Changes Summary		Performed	Checked	Date
Performed by				Page	Revision
Checked by				4 / 7	
Date					

THERMAL LIMIT CURVE

Three Phase Induction Motor - Squirrel Cage



Customer :

Product line : Rolled Steel NEMA Premium
Efficiency Three-Phase

Product code : 13733344

Catalog # : 00318ET3EBM182TC-S

Performance : 230/460 V 60 Hz 4P

Rated current : 7.62/3.81 A
LRC : 8.8
Rated torque : 8.93 ft.lb
Locked rotor torque : 220 %
Breakdown torque : 300 %
Rated speed : 1765 rpm

Moment of inertia (J) : 0.4017 sq.ft.lb
Duty cycle : Cont.(S1)
Insulation class : F
Service factor : 1.15
Temperature rise : 80 K
Design : B

Heating constant

Cooling constant

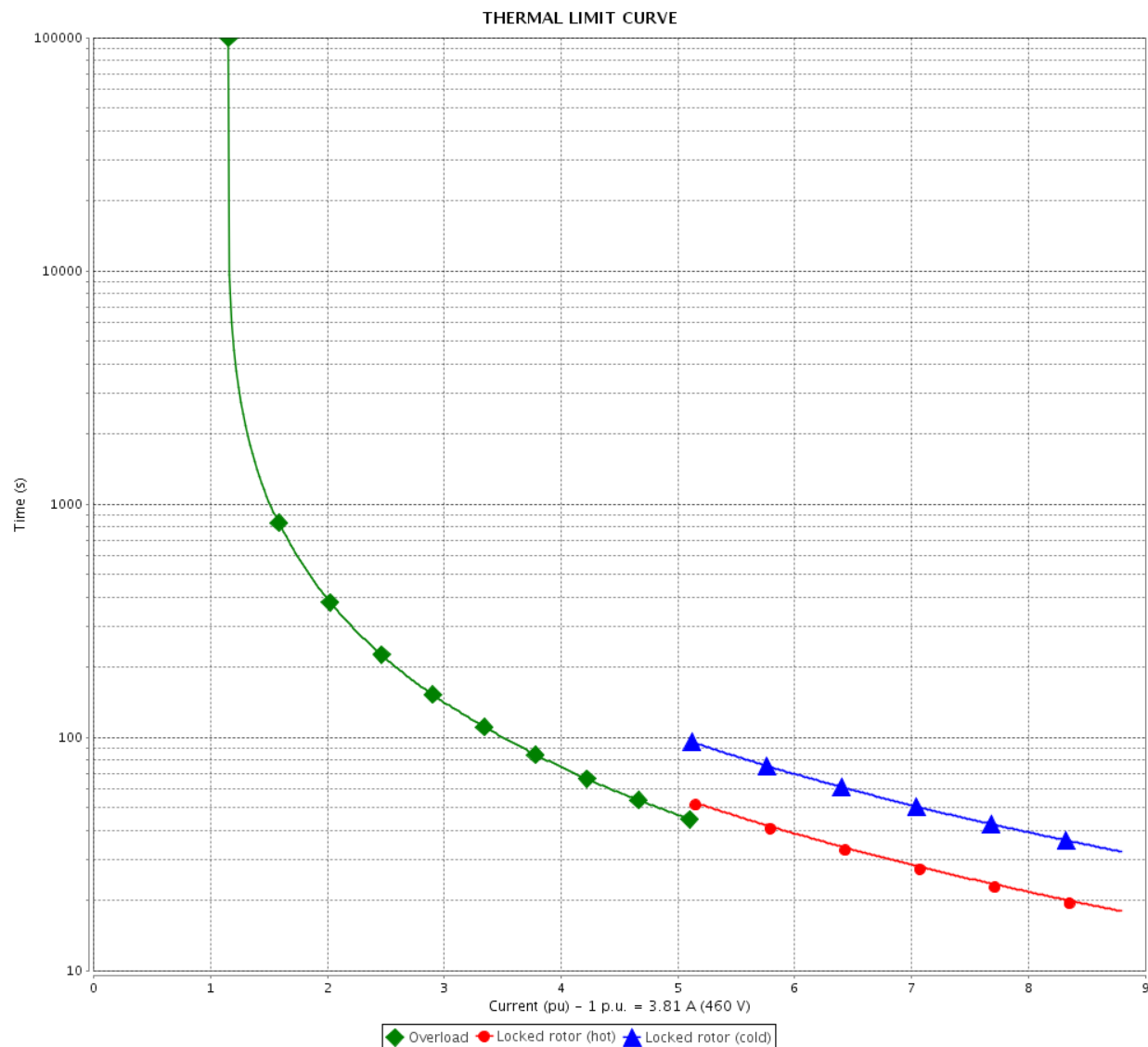
Rev.	Changes Summary	Performed	Checked	Date
Performed by		Page 5 / 7Revision		
Checked by				
Date	13/04/2020			

THERMAL LIMIT CURVE

Three Phase Induction Motor - Squirrel Cage



Customer :



Rev.	Changes Summary		Performed	Checked	Date
Performed by				Page 6 / 7	Revision
Checked by					
Date	13/04/2020				

VFD OPERATION CURVE

Three Phase Induction Motor - Squirrel Cage

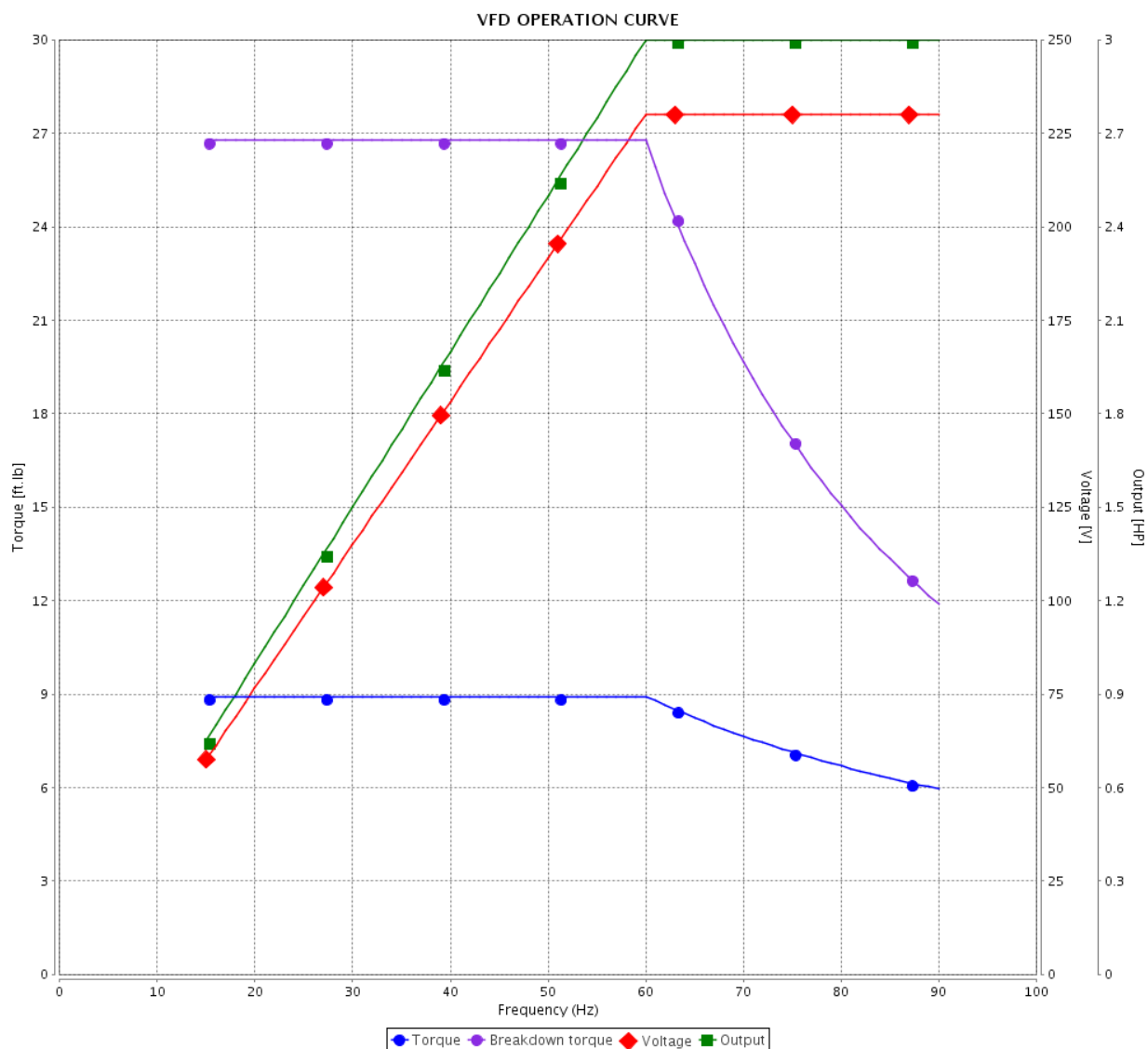


Customer :

Product line : Rolled Steel NEMA Premium
Efficiency Three-Phase

Product code : 13733344

Catalog # : 00318ET3EBM182TC-S

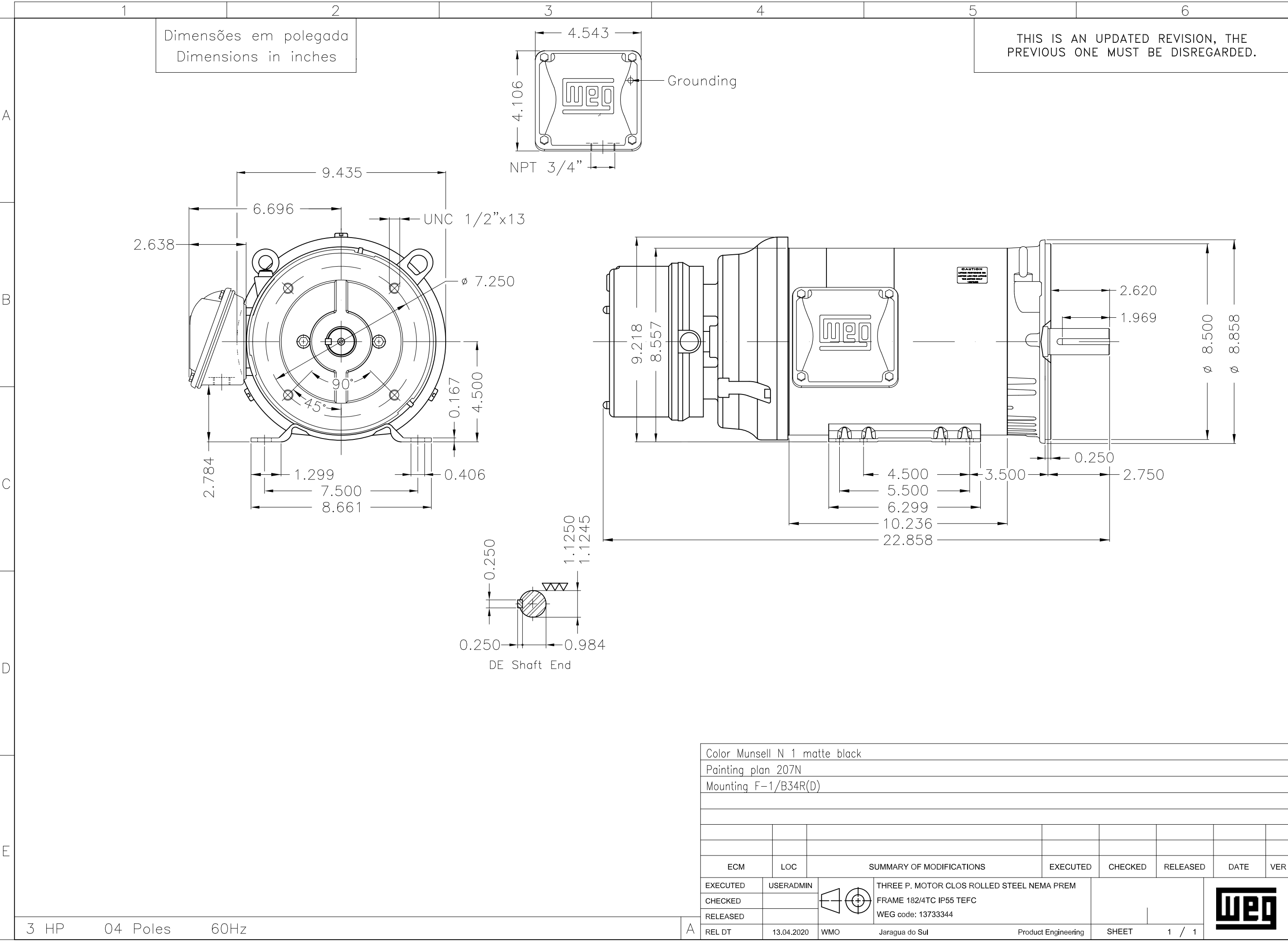


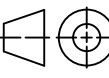

Performance : 230/460 V 60 Hz 4P

Rated current : 7.62/3.81 A
LRC : 8.8
Rated torque : 8.93 ft.lb
Locked rotor torque : 220 %
Breakdown torque : 300 %
Rated speed : 1765 rpm

Moment of inertia (J) : 0.4017 sq.ft.lb
Duty cycle : Cont.(S1)
Insulation class : F
Service factor : 1.15
Temperature rise : 80 K
Design : B

Rev.	Changes Summary	Performed	Checked	Date
Performed by		Page 7 / 7 Revision		
Checked by				
Date	13/04/2020			



Color Munsell N 1 matte black						
Painting plan 207N						
Mounting F-1/B34R(D)						
ECM	LOC	SUMMARY OF MODIFICATIONS		EXECUTED	CHECKED	RELEASED
EXECUTED	USERADMIN			THREE P. MOTOR CLOS ROLLED STEEL NEMA PREM FRAME 182/4TC IP55 TEFC WEG code: 13733344		
CHECKED						
RELEASED						
REL DT	13.04.2020	WMO	Jaragua do Sul	Product Engineering	SHEET	1 / 1



NEMA
Premium



3PT9
C US LISTED
FOR SAFE AREA



Energy Verified

MADE IN MEXICO

MAT: 13733344 CC029A

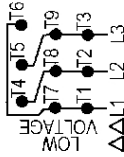
W01.TE0IC0X0N

MODEL 00318ET3EBM182TC-S

21MAR2019 S/N:

For 60Hz: Class I, Zone 2, IIC
Class I, Div.2, Gr. A,B,C,D - T3
Div 2 Inverter Duty (SF1.00)
CT 2:1/VT 1000:1

PH 3	FR	182/4TC	HP(KW)	3.0(2.2)	Hz	60
V	230/460		RPM	1765		
A	7.62/3.81		DUTY CONT.			
SFA	8.76/4.38		CODE K	DES B	IP55	
SF	1.15	INS CL F	AT 80K	AMB 40°C	ENCL	TEFC
PF	0.81		NEMA NOM.EFF.	89.5%		
ALT	1000	m.a.s.l.	USABLE @ 208V	8.43A	SF1.00	
ALTERNATE RATING:	3.0HP	50Hz	190-220/380-415V	SF1.15		
9.08-8.15/4.54-4.32A	1455RPM	EFF 86.7% (IE3)	IEC 60034-1			



ΔΔL1 L2 L3 Δ L1 L2 L3

INTERCHANGE ANY TWO LINE WIRES TO REVERSE THE ROTATION

For safe area-Inverter duty For 60Hz use on VPWM 1000:1 VT, 4:1 CT

DE: 6206-ZZ ODE: 6205-ZZ MOBIL POLYREX EM

WARNING: Motor must be grounded in accordance with local and national electrical codes to prevent serious electrical shocks. Disconnect power source before servicing unit.

AVERTISSEMENT: Le moteur doit être mis à la terre conformément aux codes électriques locaux et nationaux afin d'éviter tout choc électrique grave. Déconnectez l'alimentation avant l'entretien de la machine.

