

DATA SHEET

Three Phase Induction Motor - Squirrel Cage



Customer :

Product line : W40 JP Pump High Efficiency
Three-Phase

Product code : 14830324

Catalog # : 04018OP3VFP324JPV-W4

Frame : 324/6JP
Output : 40 HP (30 kW)
Poles : 4
Frequency : 60 Hz
Rated voltage : 200/400 V
Rated current : 111/55.4 A
L. R. Amperes : 665/333 A
LRC : 6.0x(Code G)
No load current : 36.8/18.4 A
Rated speed : 1775 rpm
Slip : 1.39 %
Rated torque : 118 ft.lb
Locked rotor torque : 180 %
Breakdown torque : 210 %
Insulation class : F
Service factor : 1.15
Moment of inertia (J) : 5.37 sq.ft.lb
Design : B

Locked rotor time : 36s (cold) 20s (hot)
Temperature rise : 80 K
Duty cycle : Cont.(S1)
Ambient temperature : -20°C to +40°C
Altitude : 1000 m.a.s.l.
Protection degree : IP23
Cooling method : IC01 - ODP
Mounting : W-6
Rotation¹ : Both (CW and CCW)
Starting method : Direct On Line
Approx. weight³ : 453 lb

Output	25%	50%	75%	100%
Efficiency (%)	92.2	92.4	93.0	93.0
Power Factor	0.48	0.72	0.81	0.84

Foundation loads
Max. traction
Max. compression

		<u>Drive end</u>	<u>Non drive end</u>
Bearing type	:	6312 Z C3	6211 Z C3
Sealing	:	Without Bearing Seal	Without Bearing Seal
Lubrication interval	:	20000 h	20000 h
Lubricant amount	:	21 g	11 g
Lubricant type	:	Mobil Polyrex EM	

Notes

This revision replaces and cancel the previous one, which must be eliminated.

- (1) Looking the motor from the shaft end.
- (2) Measured at 1m and with tolerance of +3dB(A).
- (3) Approximate weight subject to changes after manufacturing process.
- (4) At 100% of full load.

These are average values based on tests with sinusoidal power supply, subject to the tolerances stipulated in NEMA MG-1.

Rev.	Changes Summary	Performed	Checked	Date
Performed by		Page 1 / 6 Revision		
Checked by				
Date	10/04/2020			

TORQUE AND CURRENT VS SPEED CURVE

Three Phase Induction Motor - Squirrel Cage

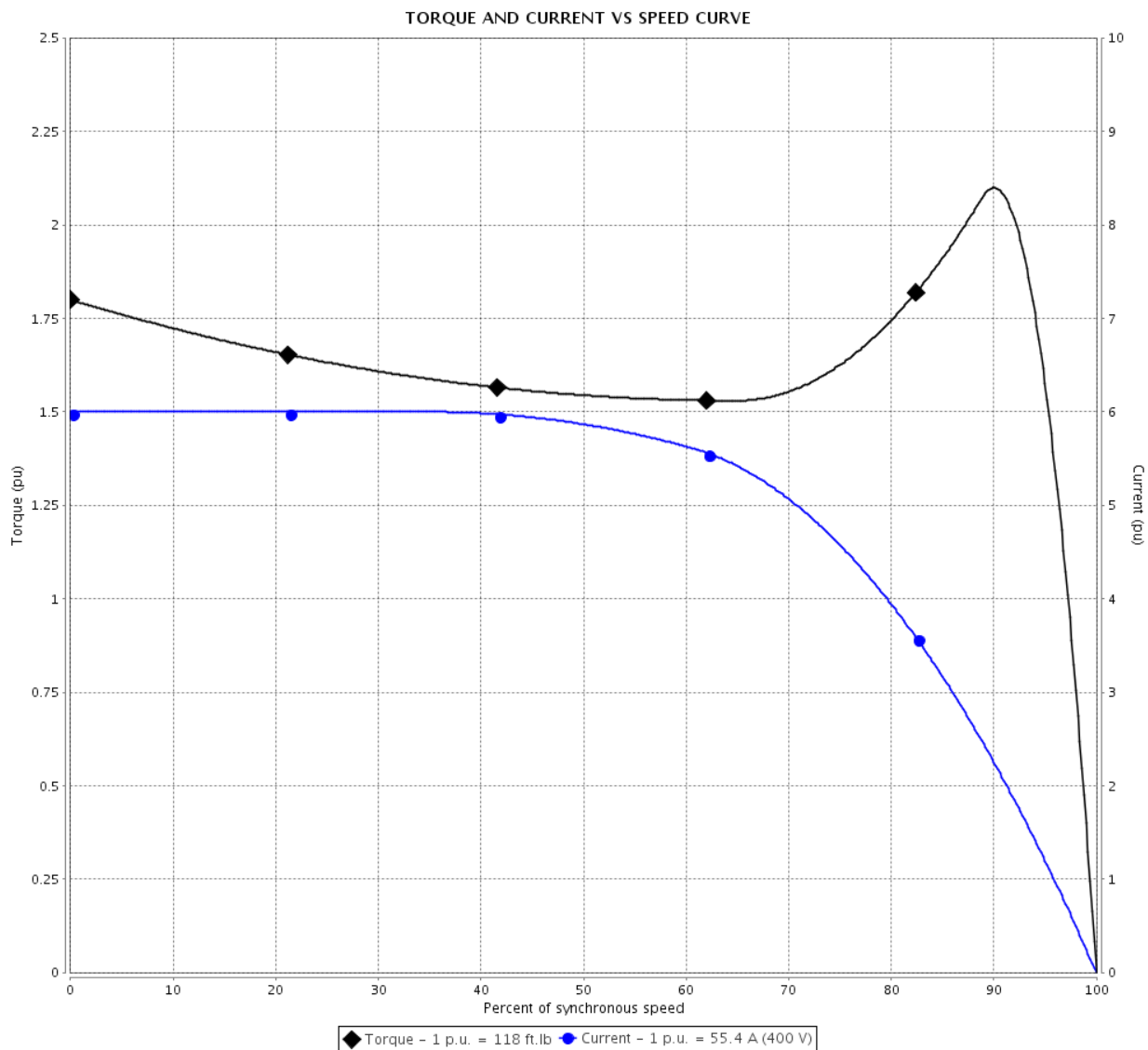


Customer :

Product line : W40 JP Pump High Efficiency
Three-Phase

Product code : 14830324

Catalog # : 04018OP3VFP324JPV-W4



Performance : 200/400 V 60 Hz 4P

Rated current : 111/55.4 A
LRC : 6.0
Rated torque : 118 ft.lb
Locked rotor torque : 180 %
Breakdown torque : 210 %
Rated speed : 1775 rpm

Moment of inertia (J) : 5.37 sq.ft.lb
Duty cycle : Cont.(S1)
Insulation class : F
Service factor : 1.15
Temperature rise : 80 K
Design : B

Locked rotor time : 36s (cold) 20s (hot)

Rev.	Changes Summary	Performed	Checked	Date
Performed by		<div>Page 2 / 6</div> <div>Revision</div>		
Checked by				
Date	10/04/2020			

LOAD PERFORMANCE CURVE

Three Phase Induction Motor - Squirrel Cage

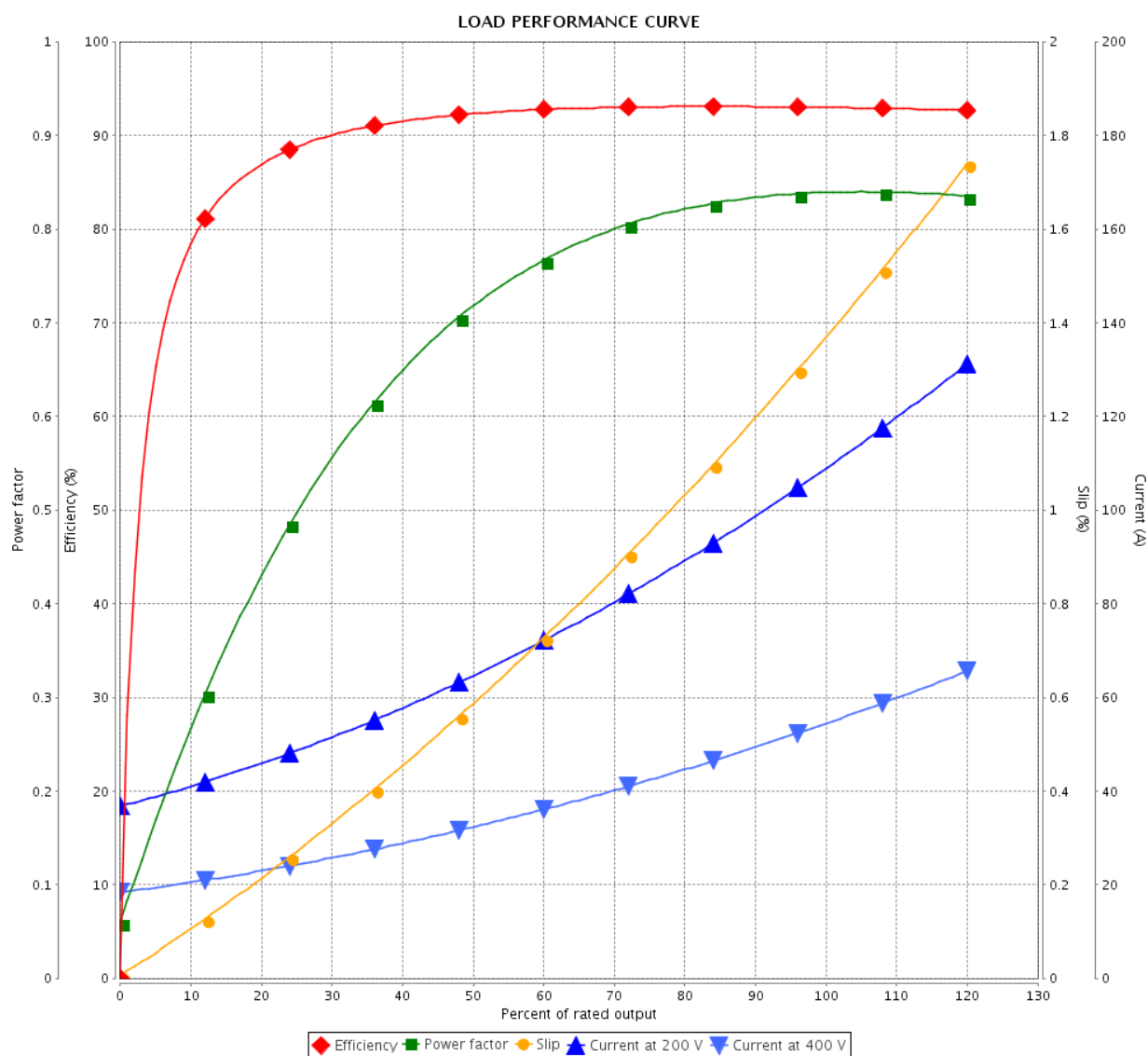


Customer :

Product line : W40 JP Pump High Efficiency
Three-Phase

Product code : 14830324

Catalog # : 04018OP3VFP324JPV-W4



Performance : 200/400 V 60 Hz 4P

Rated current : 111/55.4 A
LRC : 6.0
Rated torque : 118 ft.lb
Locked rotor torque : 180 %
Breakdown torque : 210 %
Rated speed : 1775 rpm

Moment of inertia (J) : 5.37 sq.ft.lb
Duty cycle : Cont.(S1)
Insulation class : F
Service factor : 1.15
Temperature rise : 80 K
Design : B

Rev.	Changes Summary	Performed	Checked	Date
Performed by		Page 3 / 6Revision		
Checked by				
Date	10/04/2020			

THERMAL LIMIT CURVE

Three Phase Induction Motor - Squirrel Cage



Customer

:

Product line

: W40 JP Pump High Efficiency
Three-Phase

Product code :

14830324

Catalog # :

04018OP3VFP324JPV-W4

Performance : 200/400 V 60 Hz 4P

Rated current : 111/55.4 A
LRC : 6.0
Rated torque : 118 ft.lb
Locked rotor torque : 180 %
Breakdown torque : 210 %
Rated speed : 1775 rpm

Moment of inertia (J) : 5.37 sq.ft.lb
Duty cycle : Cont.(S1)
Insulation class : F
Service factor : 1.15
Temperature rise : 80 K
Design : B

Heating constant

Cooling constant

Rev.

Changes Summary

Performed

Checked

Date

Performed by

Checked by

Date

10/04/2020

Page

4 / 6

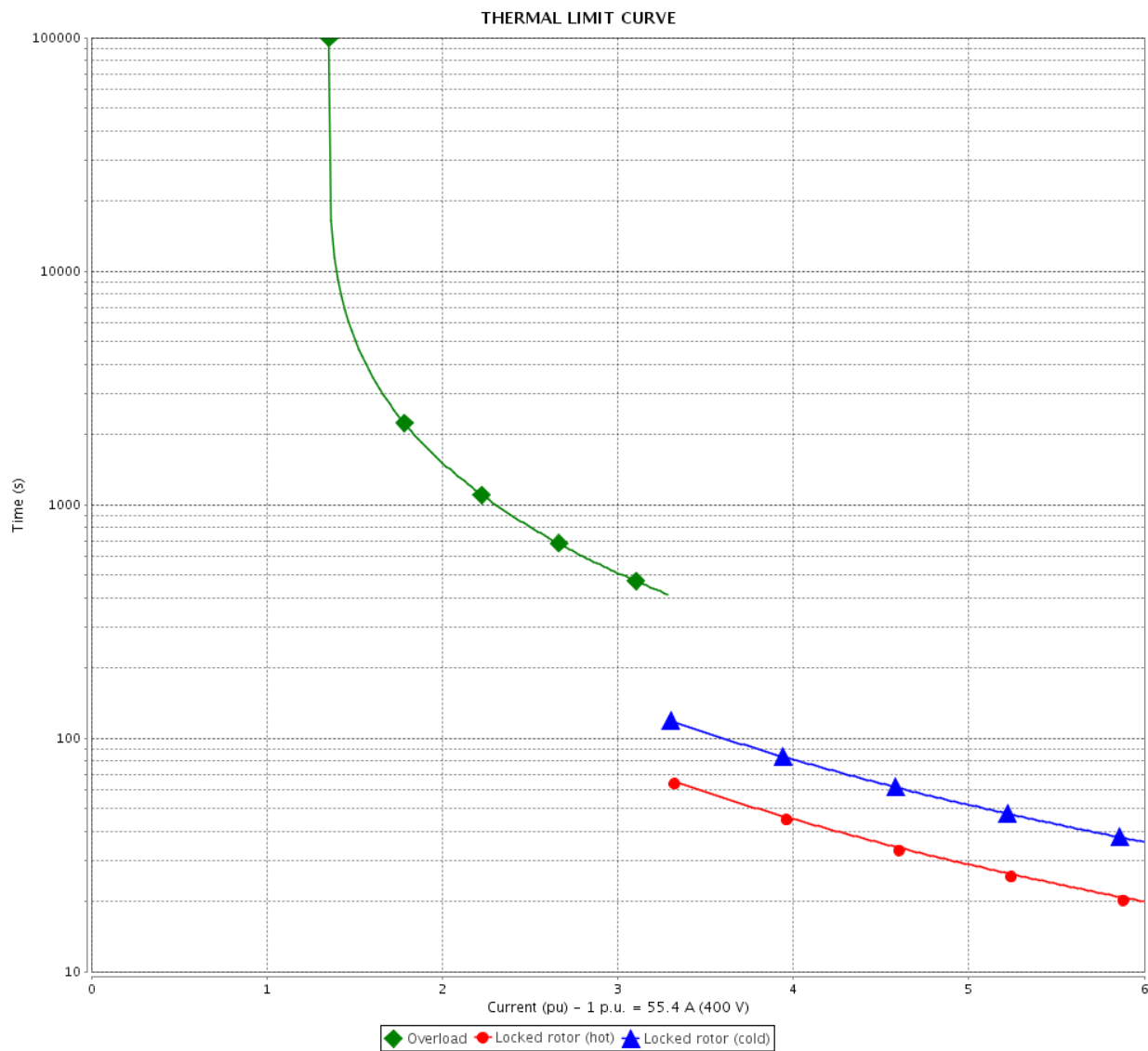
Revision

THERMAL LIMIT CURVE

Three Phase Induction Motor - Squirrel Cage



Customer : _____



Rev.	Changes Summary		Performed	Checked	Date
Performed by					
Checked by					
Date	10/04/2020				
			Page 5 / 6	Revision	

VFD OPERATION CURVE

Three Phase Induction Motor - Squirrel Cage

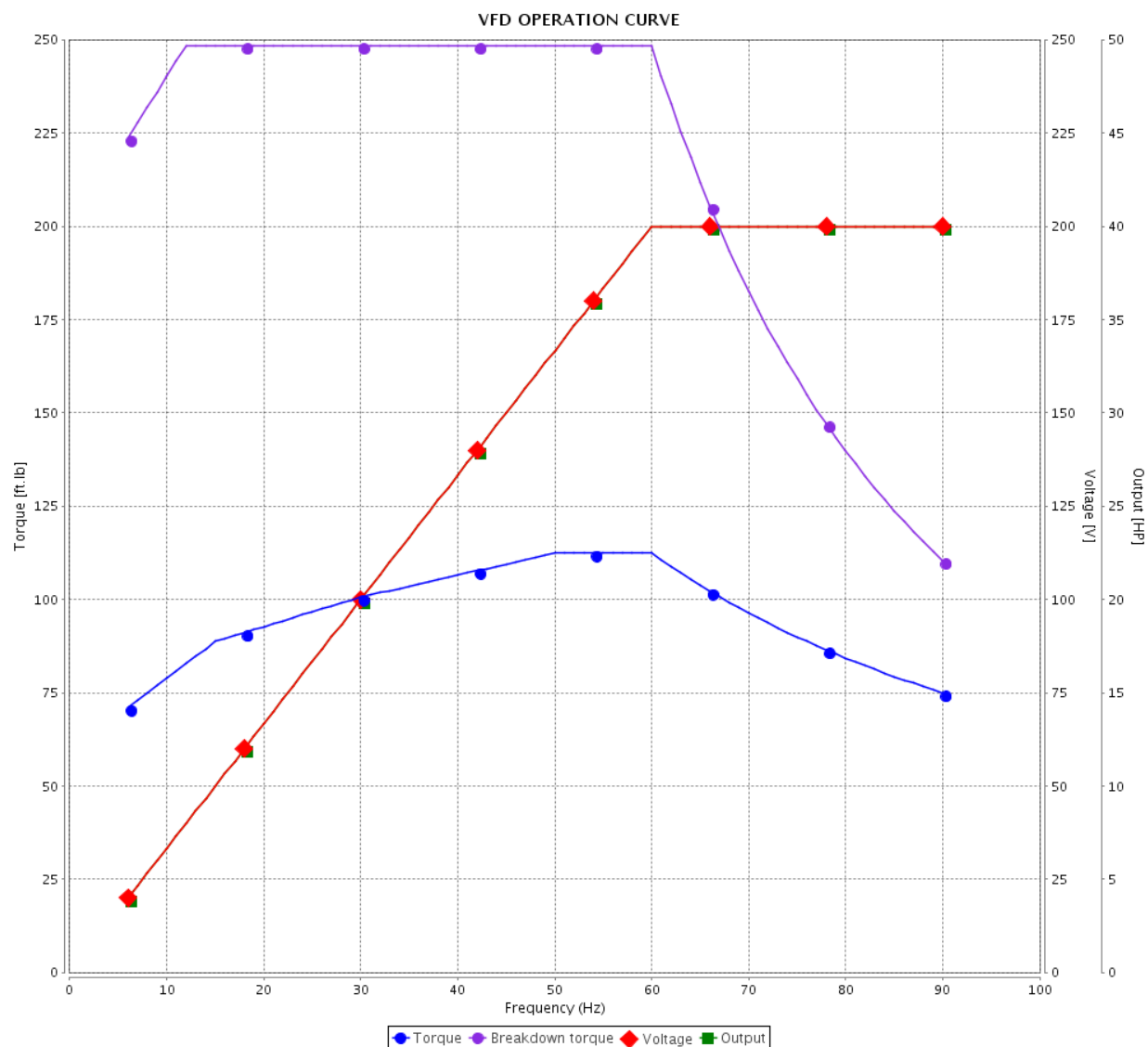


Customer :

Product line : W40 JP Pump High Efficiency
Three-Phase

Product code : 14830324

Catalog # : 04018OP3VFP324JPV-W4

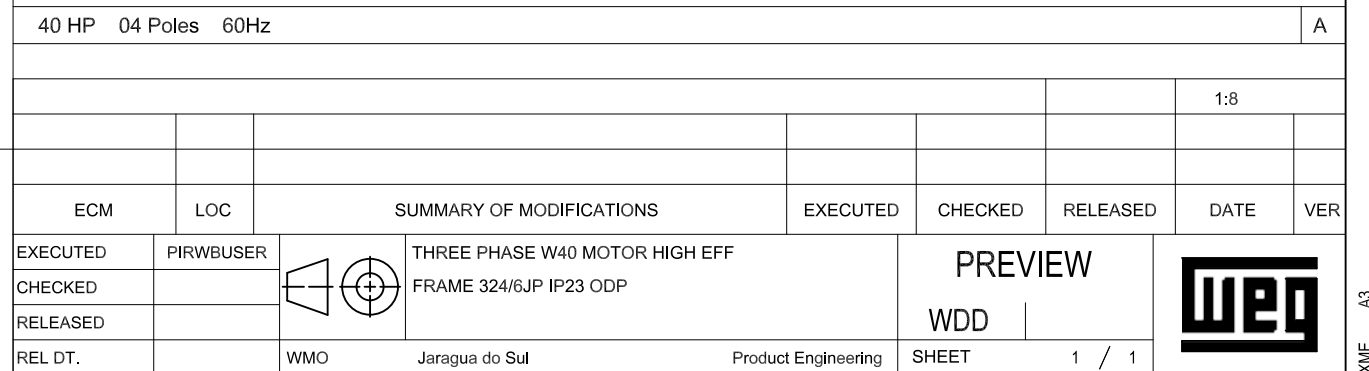
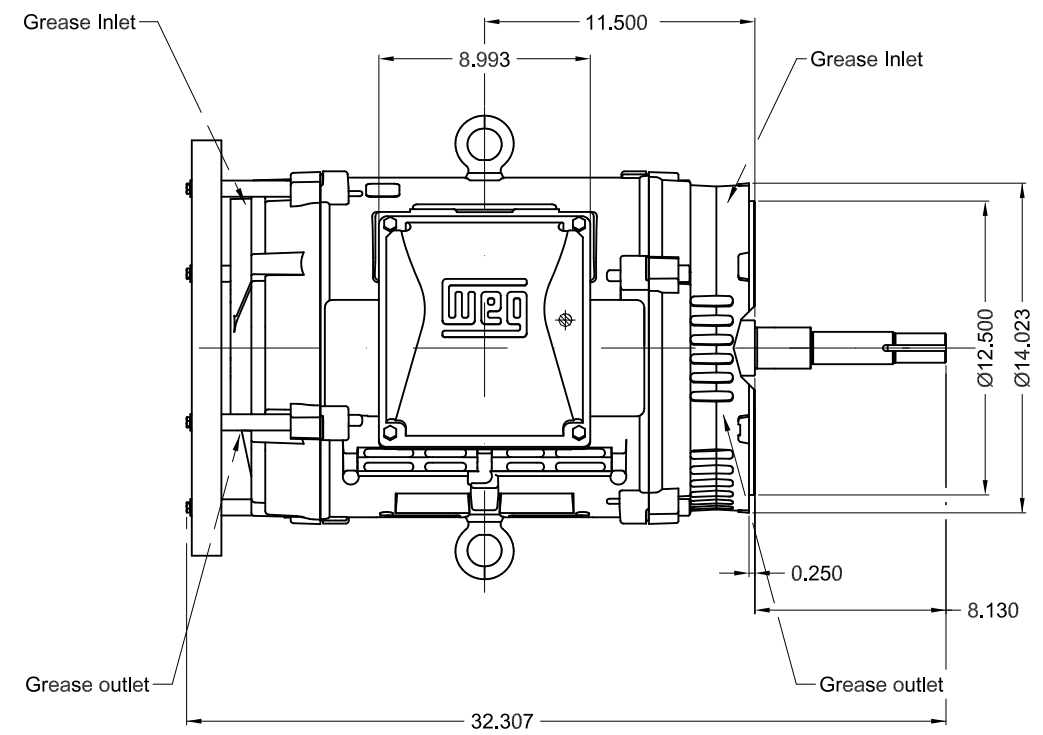


Performance : 200/400 V 60 Hz 4P

Rated current : 111/55.4 A
LRC : 6.0
Rated torque : 118 ft.lb
Locked rotor torque : 180 %
Breakdown torque : 210 %
Rated speed : 1775 rpm

Moment of inertia (J) : 5.37 sq.ft.lb
Duty cycle : Cont.(S1)
Insulation class : F
Service factor : 1.15
Temperature rise : 80 K
Design : B

Rev.	Changes Summary	Performed	Checked	Date
Performed by		Page 6 / 6Revision		
Checked by				
Date	10/04/2020			



WEG's property. Forbidden reproduction without previous authorization.