

DATA SHEET

Three Phase Induction Motor - Squirrel Cage



Customer :

Product line : W40 NEMA Premium Efficiency Three-Phase Product code : 14046018
Catalog # : 10012OT3G444T-W40

Frame	: 444/5T	Locked rotor time	: 23s (cold) 13s (hot)
Output	: 100 HP (75 kW)	Temperature rise	: 80 K
Poles	: 6	Duty cycle	: Cont.(S1)
Frequency	: 60 Hz	Ambient temperature	: -20°C to +40°C
Rated voltage	: 460 V	Altitude	: 1000 m.a.s.l.
Rated current	: 127 A	Protection degree	: IP23
L. R. Amperes	: 775 A	Cooling method	: IC01 - ODP
LRC	: 6.1x(Code G)	Mounting	: F-1
No load current	: 56.5 A	Rotation ¹	: Both (CW and CCW)
Rated speed	: 1190 rpm	Noise level ²	: 69.0 dB(A)
Slip	: 0.83 %	Starting method	: Direct On Line
Rated torque	: 441 ft.lb	Approx. weight ³	: 1340 lb
Locked rotor torque	: 200 %		
Breakdown torque	: 250 %		
Insulation class	: F		
Service factor	: 1.25		
Moment of inertia (J)	: 60.6 sq.ft.lb		
Design	: B		

Output	25%	50%	75%	100%	Foundation loads	
Efficiency (%)	94.4	94.5	95.0	95.0	Max. traction	: 2405 lb
Power Factor	0.37	0.61	0.71	0.78	Max. compression	: 3746 lb

		<u>Drive end</u>	<u>Non drive end</u>
Bearing type	:	6319 C3	6314 C3
Sealing	:	Without Bearing Seal	Without Bearing Seal
Lubrication interval	:	20000 h	20000 h
Lubricant amount	:	45 g	27 g
Lubricant type	:	Mobil Polyrex EM	

Notes

This revision replaces and cancel the previous one, which must be eliminated.

- (1) Looking the motor from the shaft end.
- (2) Measured at 1m and with tolerance of +3dB(A).
- (3) Approximate weight subject to changes after manufacturing process.
- (4) At 100% of full load.

These are average values based on tests with sinusoidal power supply, subject to the tolerances stipulated in NEMA MG-1.

Rev.	Changes Summary	Performed	Checked	Date
Performed by		Page Revision 1 / 6		
Checked by				
Date	10/04/2020			

TORQUE AND CURRENT VS SPEED CURVE

Three Phase Induction Motor - Squirrel Cage

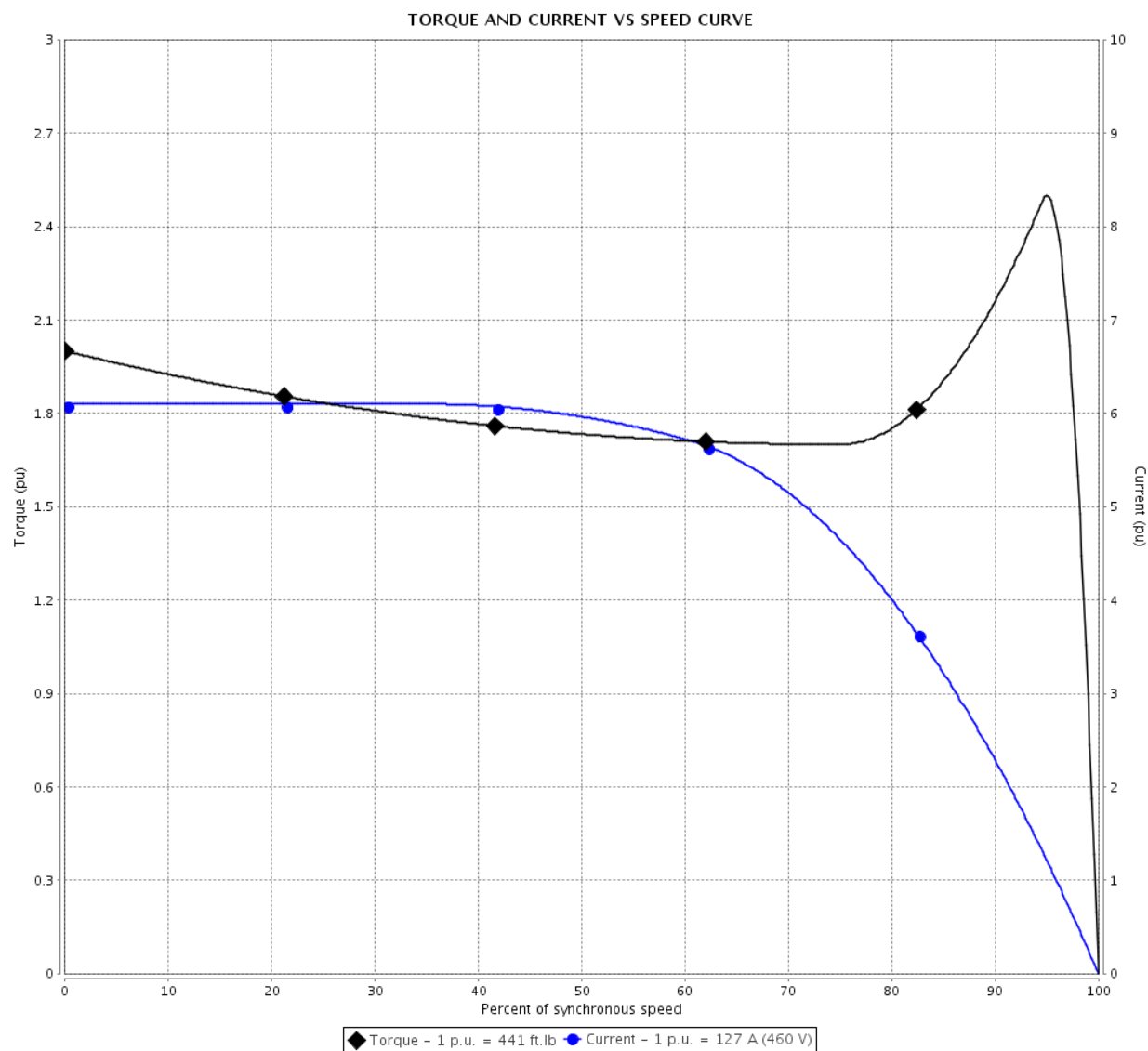


Customer :

Product line : W40 NEMA Premium Efficiency
Three-Phase

Product code : 14046018

Catalog # : 100120T3G444T-W40



Performance : 460 V 60 Hz 6P

Rated current	: 127 A	Moment of inertia (J)	: 60.6 sq.ft.lb
LRC	: 6.1	Duty cycle	: Cont.(S1)
Rated torque	: 441 ft.lb	Insulation class	: F
Locked rotor torque	: 200 %	Service factor	: 1.25
Breakdown torque	: 250 %	Temperature rise	: 80 K
Rated speed	: 1190 rpm	Design	: B

Locked rotor time : 23s (cold) 13s (hot)

Rev.	Changes Summary	Performed	Checked	Date
Performed by		<div style="display: flex; justify-content: space-between;"> <div>Page 2 / 6</div> <div>Revision</div> </div>		
Checked by				
Date	10/04/2020			

LOAD PERFORMANCE CURVE

Three Phase Induction Motor - Squirrel Cage

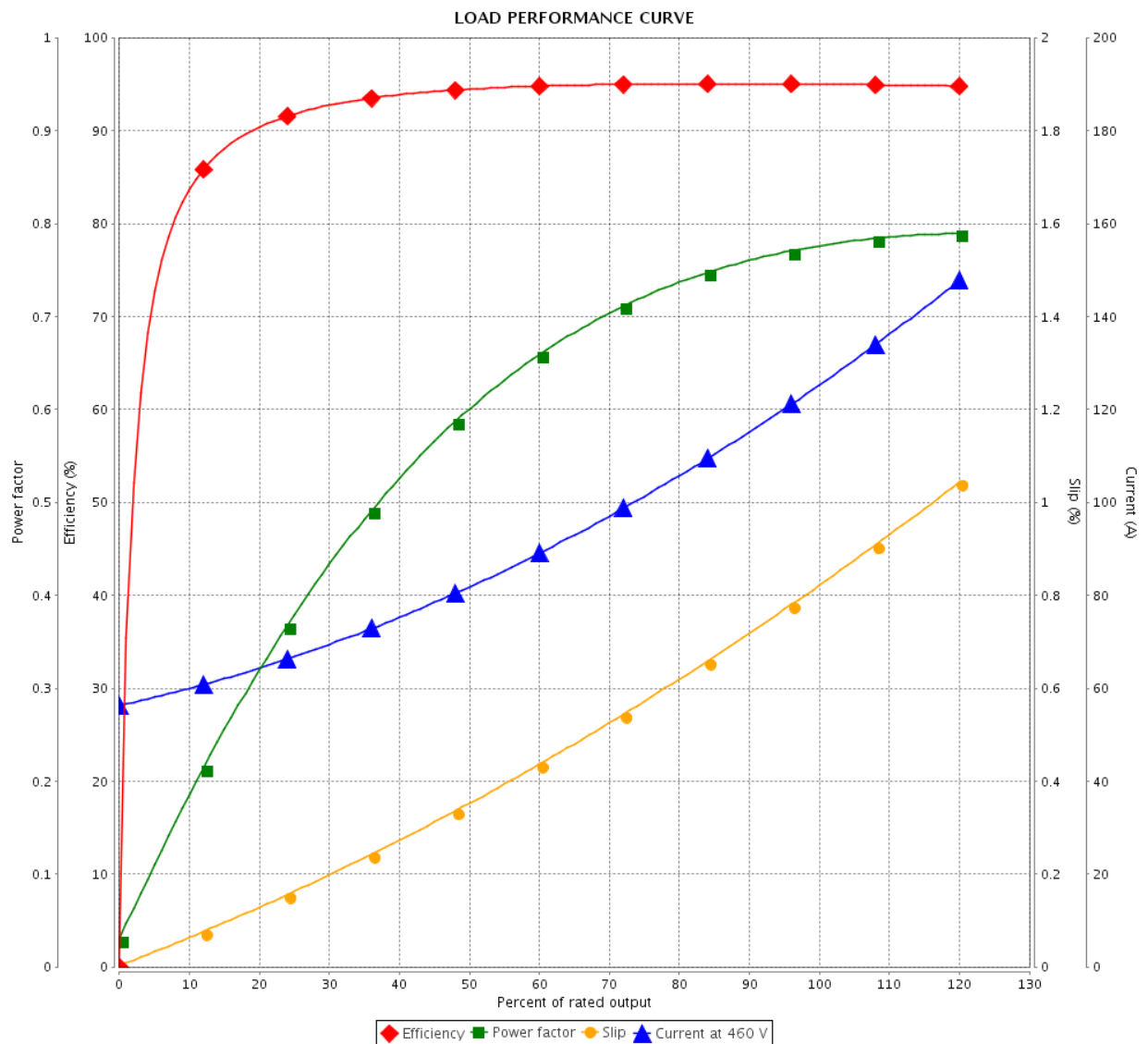


Customer :

Product line : W40 NEMA Premium Efficiency
Three-Phase

Product code : 14046018

Catalog # : 10012OT3G444T-W40



Performance : 460 V 60 Hz 6P

Rated current : 127 A
LRC : 6.1
Rated torque : 441 ft.lb
Locked rotor torque : 200 %
Breakdown torque : 250 %
Rated speed : 1190 rpm

Moment of inertia (J) : 60.6 sq.ft.lb
Duty cycle : Cont.(S1)
Insulation class : F
Service factor : 1.25
Temperature rise : 80 K
Design : B

Rev.	Changes Summary	Performed	Checked	Date
Performed by		Page 3 / 6Revision		
Checked by				
Date	10/04/2020			

THERMAL LIMIT CURVE

Three Phase Induction Motor - Squirrel Cage



Customer :

Product line : W40 NEMA Premium Efficiency
Three-Phase

Product code : 14046018

Catalog # : 10012OT3G444T-W40

Performance : 460 V 60 Hz 6P

Rated current	: 127 A	Moment of inertia (J)	: 60.6 sq.ft.lb
LRC	: 6.1	Duty cycle	: Cont.(S1)
Rated torque	: 441 ft.lb	Insulation class	: F
Locked rotor torque	: 200 %	Service factor	: 1.25
Breakdown torque	: 250 %	Temperature rise	: 80 K
Rated speed	: 1190 rpm	Design	: B

Heating constant

Cooling constant

Rev.

Changes Summary

Performed

Checked

Date

Performed by

Checked by

Date

10/04/2020

Page

4 / 6

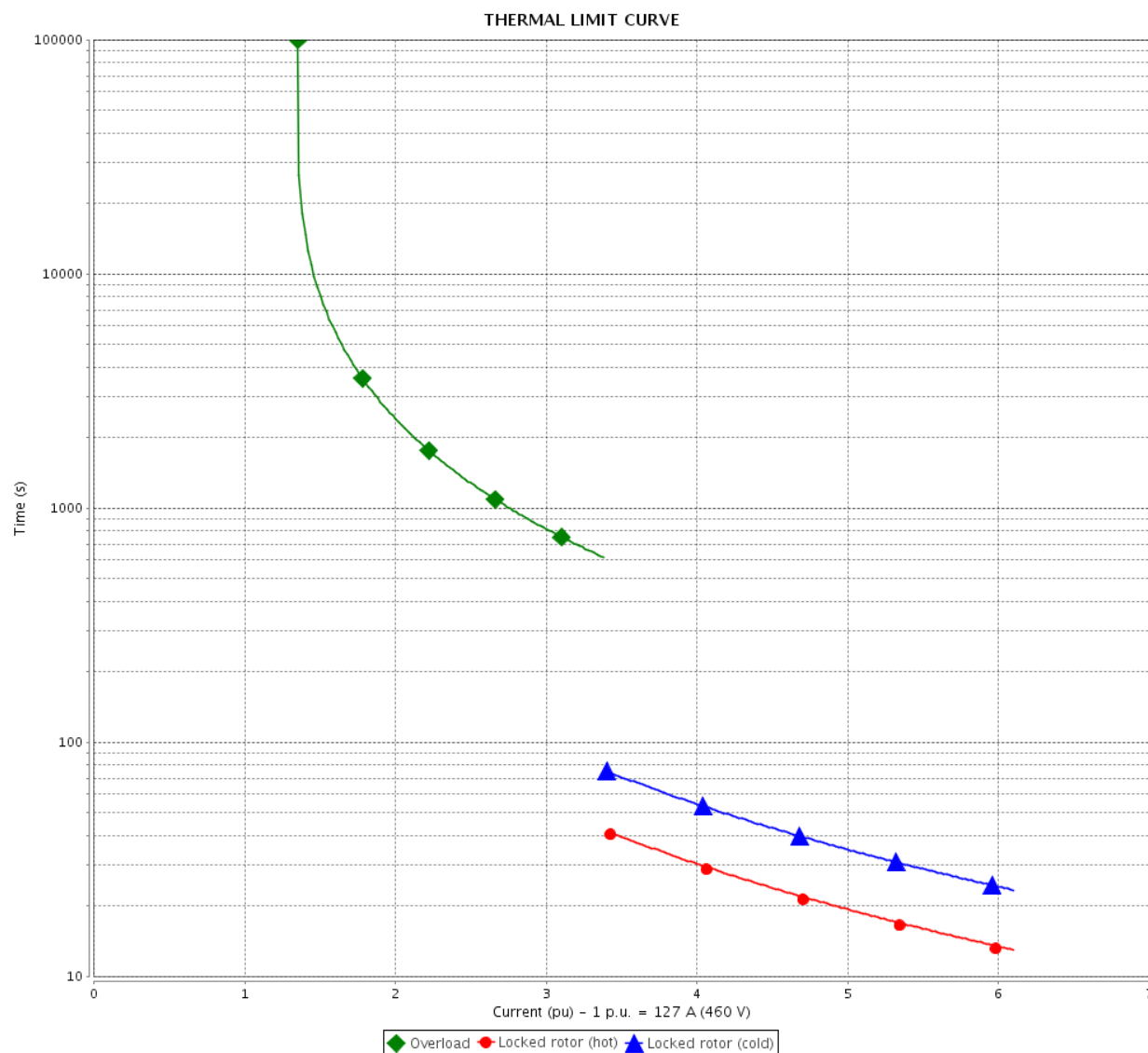
Revision

THERMAL LIMIT CURVE

Three Phase Induction Motor - Squirrel Cage



Customer : _____



Rev.	Changes Summary		Performed	Checked	Date
Performed by					
Checked by					
Date	10/04/2020				
				Page 5 / 6	Revision

VFD OPERATION CURVE

Three Phase Induction Motor - Squirrel Cage

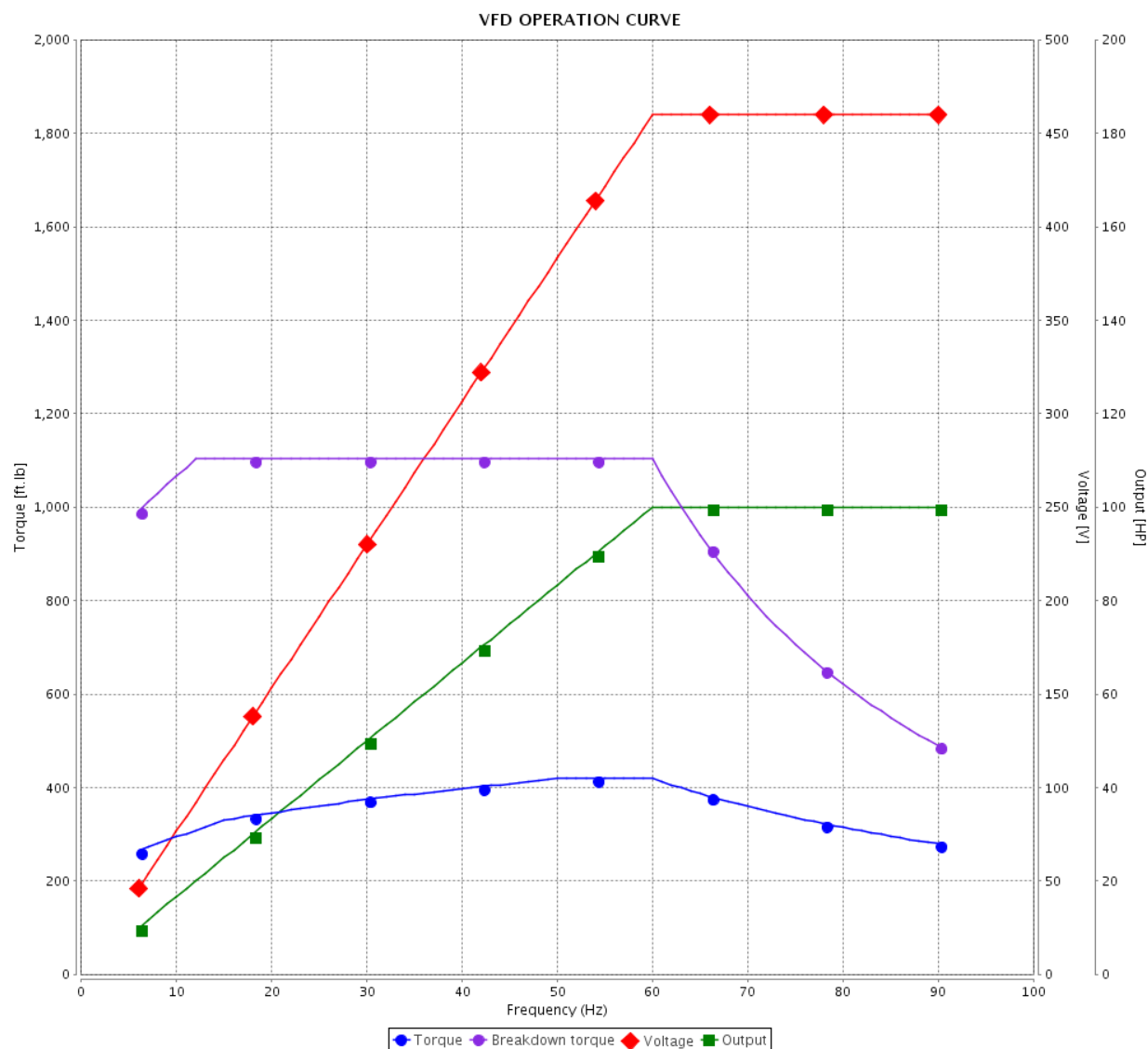


Customer :

Product line : W40 NEMA Premium Efficiency
Three-Phase

Product code : 14046018

Catalog # : 100120T3G444T-W40

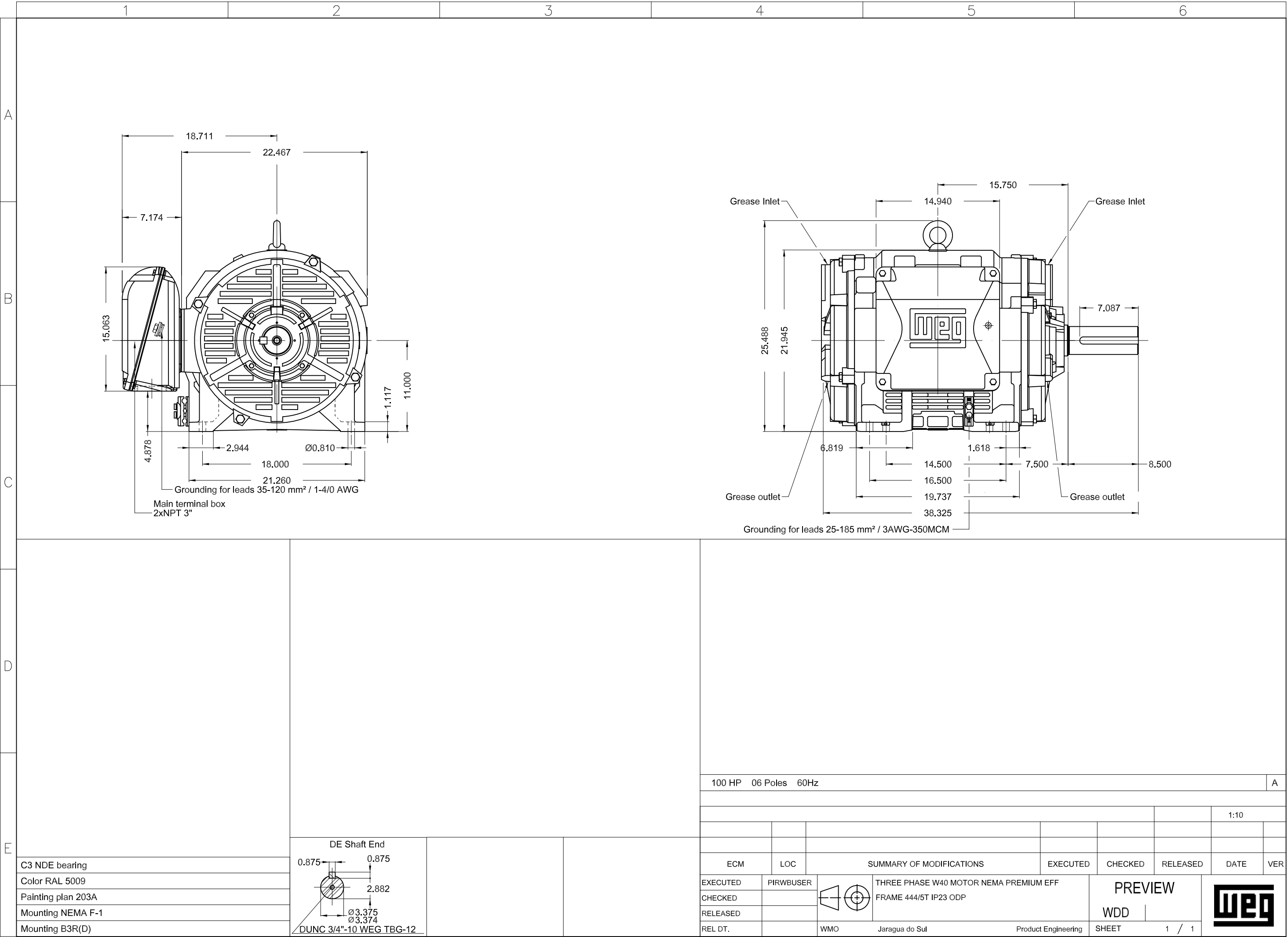


Performance : 460 V 60 Hz 6P

Rated current : 127 A
LRC : 6.1
Rated torque : 441 ft.lb
Locked rotor torque : 200 %
Breakdown torque : 250 %
Rated speed : 1190 rpm

Moment of inertia (J) : 60.6 sq.ft.lb
Duty cycle : Cont.(S1)
Insulation class : F
Service factor : 1.25
Temperature rise : 80 K
Design : B

Rev.	Changes Summary	Performed	Checked	Date
Performed by				Page 6 / 6
Checked by				
Date				
	10/04/2020			Revision






W40 NEMA
Premium



Severe Duty

PH	FR	HP(kW)		Hz	<div> <div> PART-WINDING START T12 T10 T11 T7 T8 T9 T6 T4 T5 T1 T2 T3 L1 L2 L3 </div> <div> RUN T12 T10 T11 T7 T8 T9 T6 T4 T5 T1 T2 T3 L1 L2 L3 </div> <div> WYE-DELTA START T12 T10 T11 T6 T4 T5 T7 T8 T9 T1 T2 T3 L1 L2 L3 </div> <div> RUN T12 T10 T11 T6 T4 T5 T7 T8 T9 T1 T2 T3 L1 L2 L3 </div> </div>						
V —		A —									
NEMA NOM EFF		— %		RPM							
ENCL ODP	DUTY		INS. CL.	ΔT	K						
PF		DES —	CODE	AMB.	 <div>KLUBERSYNTH BHP 72-102</div>						
SF	SFA		ALT 1000 m.a.s.l.		Lbs						