

DATA SHEET

Three Phase Induction Motor - Squirrel Cage



Customer :

Product line : W40 JP Pump High Efficiency
Three-Phase

Product code : 14829936

Catalog # : 07518OP3VFP365JPV-W4

Frame : 364/5JP
Output : 75 HP (55 kW)
Poles : 4
Frequency : 60 Hz
Rated voltage : 200/400 V
Rated current : 196/98.1 A
L. R. Amperes : 1236/618 A
LRC : 6.3x(Code G)
No load current : 57.5/28.8 A
Rated speed : 1775 rpm
Slip : 1.39 %
Rated torque : 222 ft.lb
Locked rotor torque : 180 %
Breakdown torque : 229 %
Insulation class : F
Service factor : 1.15
Moment of inertia (J) : 15.2 sq.ft.lb
Design : B

Locked rotor time : 34s (cold) 19s (hot)
Temperature rise : 80 K
Duty cycle : Cont.(S1)
Ambient temperature : -20°C to +40°C
Altitude : 1000 m.a.s.l.
Protection degree : IP23
Cooling method : IC01 - ODP
Mounting : W-6
Rotation¹ : Both (CW and CCW)
Starting method : Direct On Line
Approx. weight³ : 754 lb

Output	25%	50%	75%	100%
--------	-----	-----	-----	------

Efficiency (%)	93.5	93.6	94.1	94.1
Power Factor	0.52	0.75	0.83	0.86

Foundation loads

Max. traction : 1372 lb
Max. compression : 2126 lb

	Drive end	Non drive end
Bearing type	6314 C3	6212 Z C3
Sealing	Without Bearing Seal	Without Bearing Seal
Lubrication interval	19579 h	20000 h
Lubricant amount	27 g	13 g
Lubricant type	Mobil Polyrex EM	

Notes

This revision replaces and cancel the previous one, which must be eliminated.

- (1) Looking the motor from the shaft end.
- (2) Measured at 1m and with tolerance of +3dB(A).
- (3) Approximate weight subject to changes after manufacturing process.
- (4) At 100% of full load.

These are average values based on tests with sinusoidal power supply, subject to the tolerances stipulated in NEMA MG-1.

Rev.	Changes Summary	Performed	Checked	Date
Performed by		Page 1 / 6 Revision		
Checked by				
Date	10/04/2020			

TORQUE AND CURRENT VS SPEED CURVE

Three Phase Induction Motor - Squirrel Cage

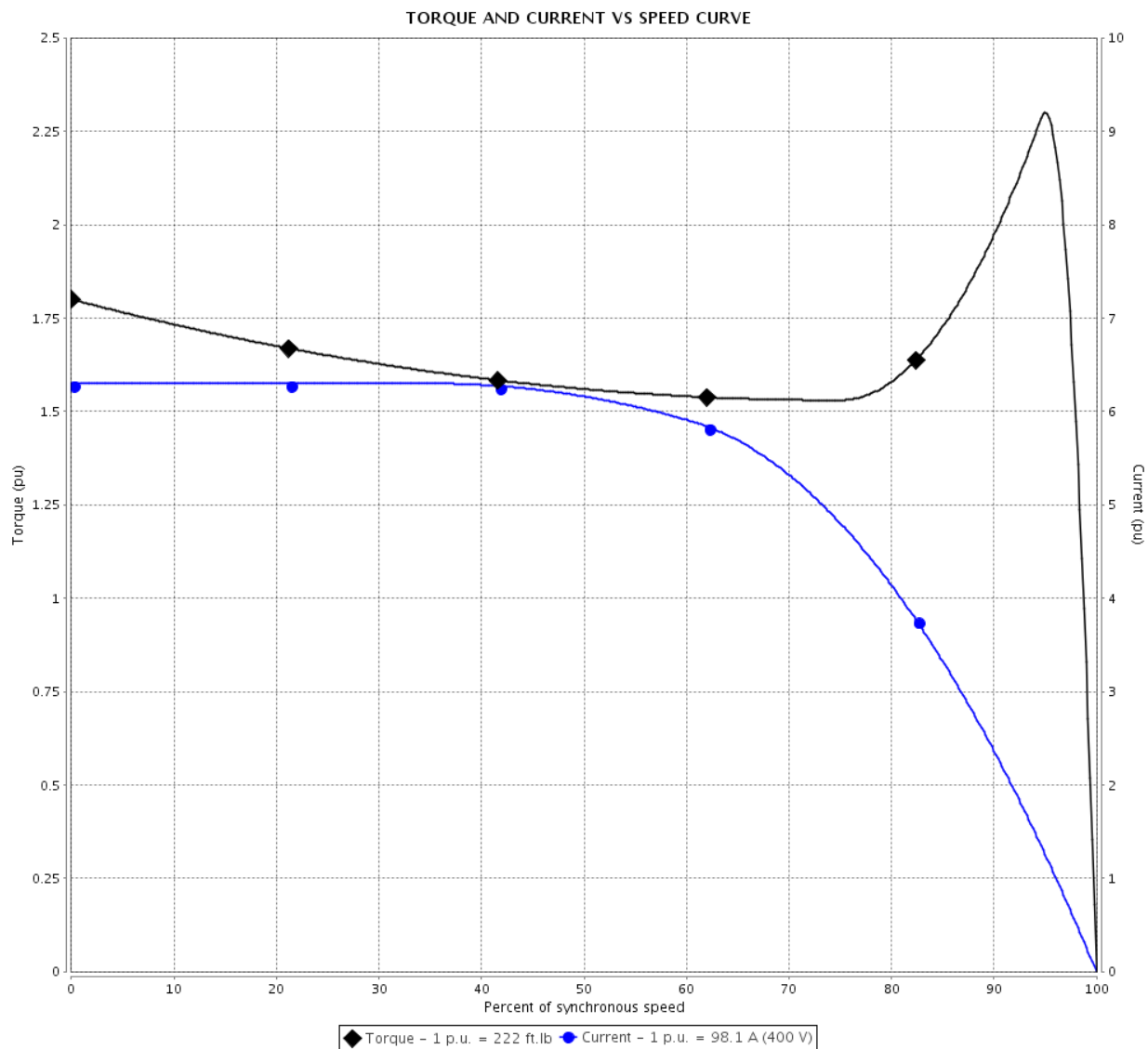


Customer :

Product line : W40 JP Pump High Efficiency
Three-Phase

Product code : 14829936

Catalog # : 07518OP3VFP365JPV-W4



Performance : 200/400 V 60 Hz 4P

Rated current : 196/98.1 A
LRC : 6.3
Rated torque : 222 ft.lb
Locked rotor torque : 180 %
Breakdown torque : 229 %
Rated speed : 1775 rpm

Moment of inertia (J) : 15.2 sq.ft.lb
Duty cycle : Cont.(S1)
Insulation class : F
Service factor : 1.15
Temperature rise : 80 K
Design : B

Locked rotor time : 34s (cold) 19s (hot)

Rev.	Changes Summary	Performed	Checked	Date
Performed by		<div>Page 2 / 6</div> <div>Revision</div>		
Checked by				
Date	10/04/2020			

LOAD PERFORMANCE CURVE

Three Phase Induction Motor - Squirrel Cage

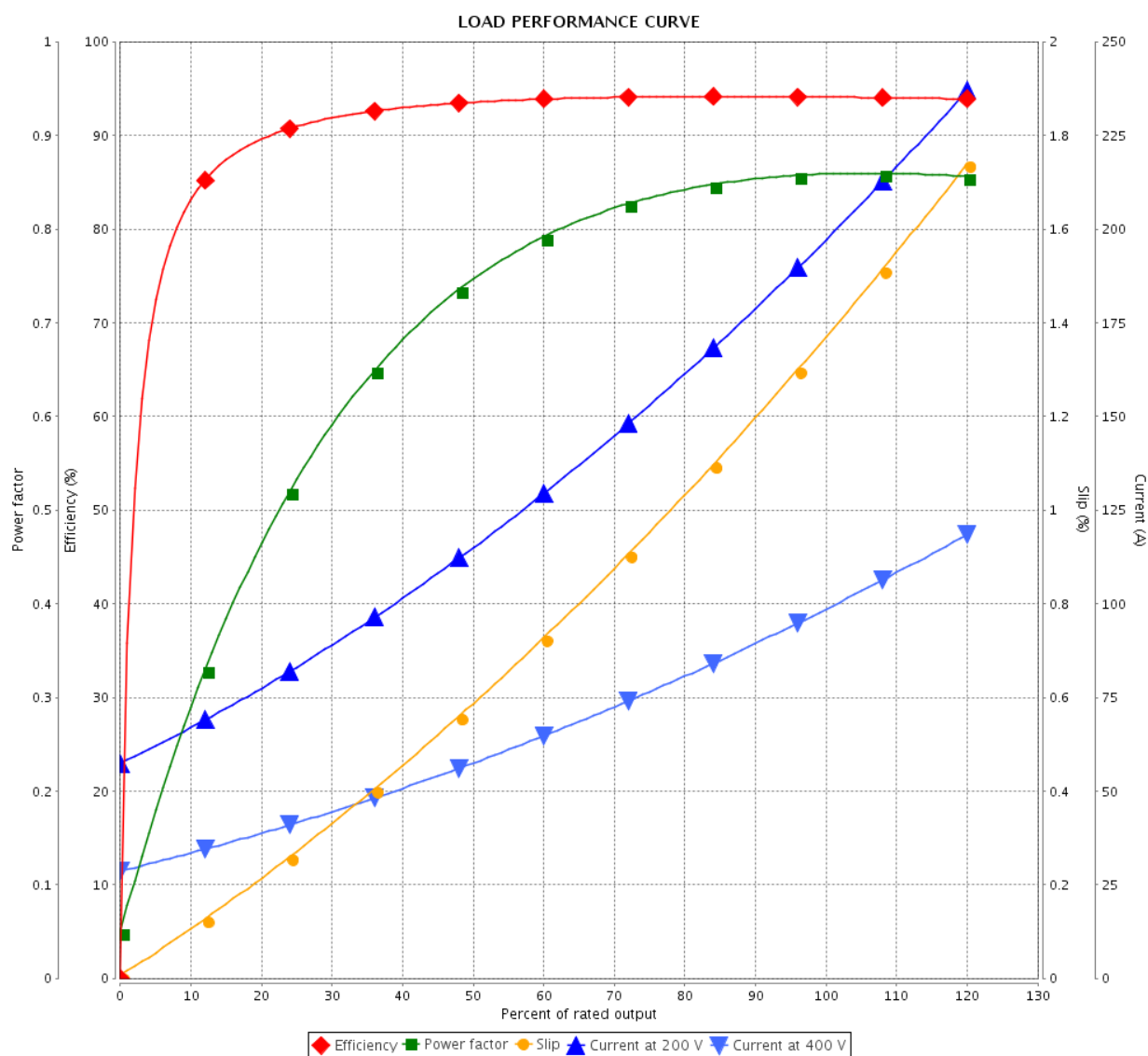


Customer :

Product line : W40 JP Pump High Efficiency
Three-Phase

Product code : 14829936

Catalog # : 07518OP3VFP365JPV-W4



Performance : 200/400 V 60 Hz 4P

Rated current : 196/98.1 A
LRC : 6.3
Rated torque : 222 ft.lb
Locked rotor torque : 180 %
Breakdown torque : 229 %
Rated speed : 1775 rpm

Moment of inertia (J) : 15.2 sq.ft.lb
Duty cycle : Cont.(S1)
Insulation class : F
Service factor : 1.15
Temperature rise : 80 K
Design : B

Rev.	Changes Summary	Performed	Checked	Date
Performed by		Page 3 / 6Revision		
Checked by				
Date	10/04/2020			

THERMAL LIMIT CURVE

Three Phase Induction Motor - Squirrel Cage



Customer :

Product line : W40 JP Pump High Efficiency
Three-Phase

Product code : 14829936

Catalog # : 07518OP3VFP365JPV-W4

Performance : 200/400 V 60 Hz 4P

Rated current : 196/98.1 A
LRC : 6.3
Rated torque : 222 ft.lb
Locked rotor torque : 180 %
Breakdown torque : 229 %
Rated speed : 1775 rpm

Moment of inertia (J) : 15.2 sq.ft.lb
Duty cycle : Cont.(S1)
Insulation class : F
Service factor : 1.15
Temperature rise : 80 K
Design : B

Heating constant

Cooling constant

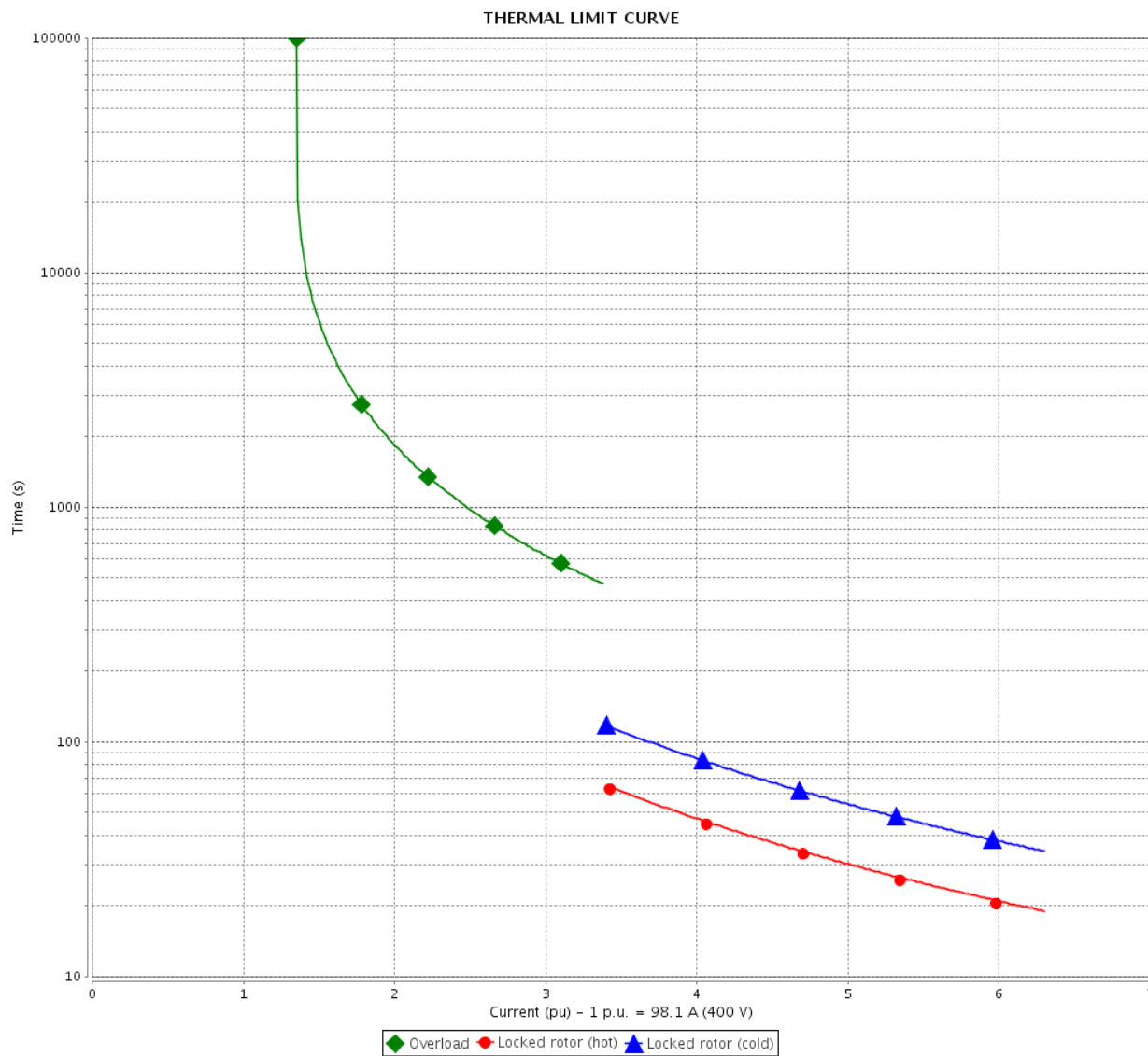
Rev.	Changes Summary		Performed	Checked	Date
Performed by				Page	Revision
Checked by					
Date	10/04/2020			4 / 6	

THERMAL LIMIT CURVE

Three Phase Induction Motor - Squirrel Cage



Customer : _____



Rev.	Changes Summary		Performed	Checked	Date
Performed by					
Checked by					
Date	10/04/2020				
				Page 5 / 6	Revision

VFD OPERATION CURVE

Three Phase Induction Motor - Squirrel Cage

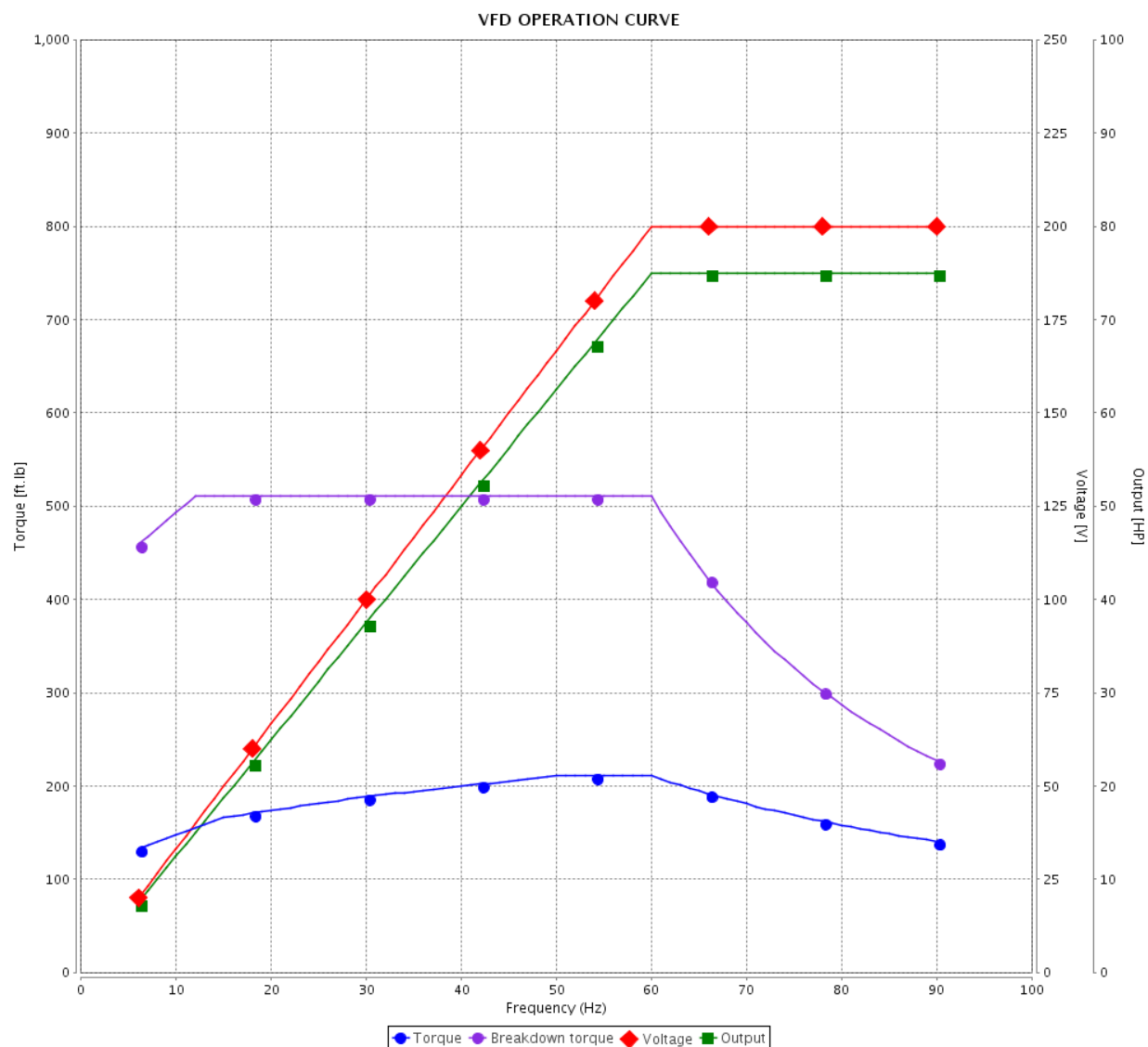


Customer :

Product line : W40 JP Pump High Efficiency
Three-Phase

Product code : 14829936

Catalog # : 07518OP3VFP365JPV-W4

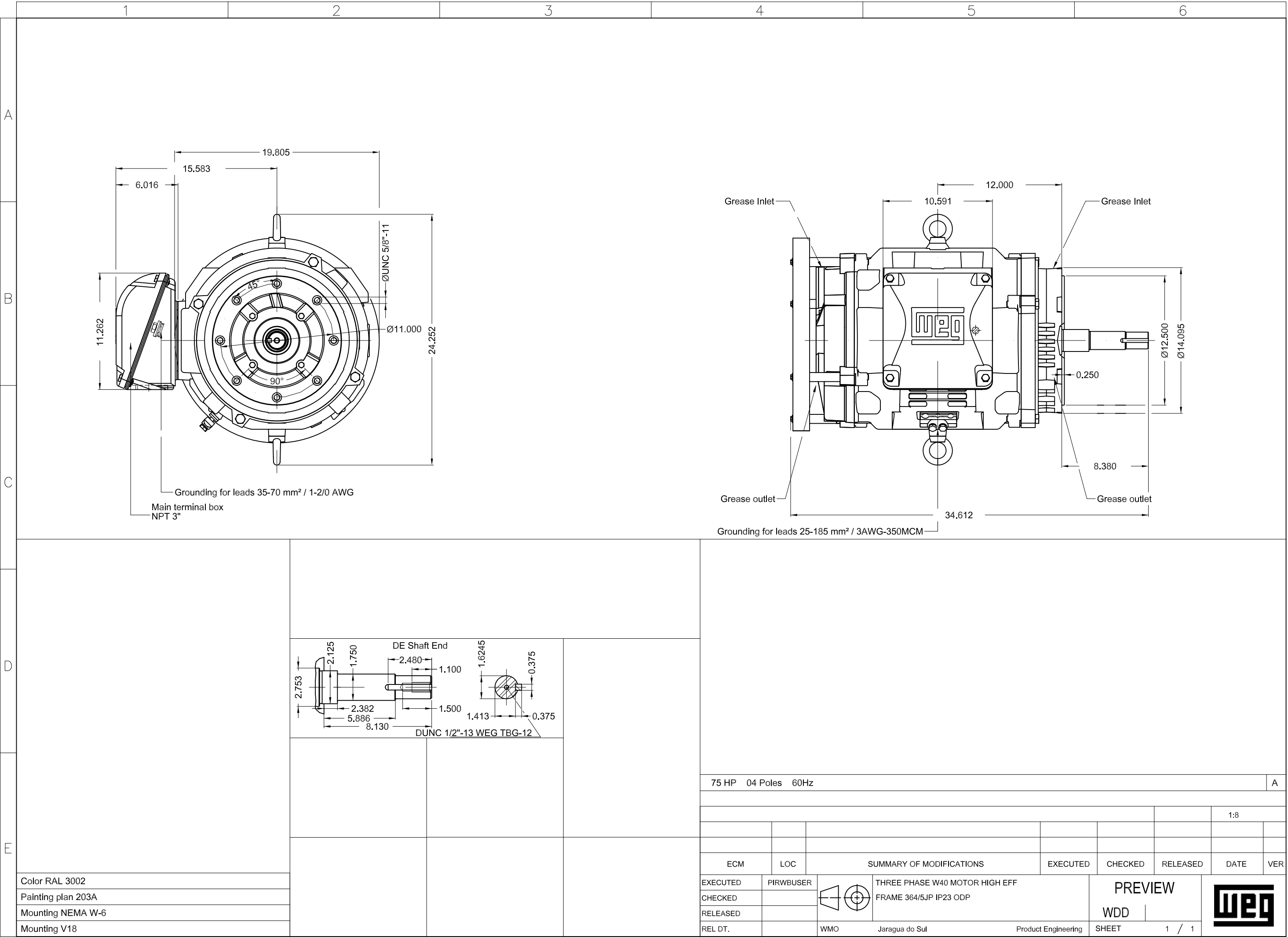


Performance : 200/400 V 60 Hz 4P

Rated current : 196/98.1 A
LRC : 6.3
Rated torque : 222 ft.lb
Locked rotor torque : 180 %
Breakdown torque : 229 %
Rated speed : 1775 rpm

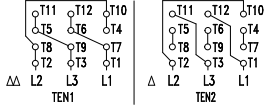

Moment of inertia (J) : 15.2 sq.ft.lb
Duty cycle : Cont.(S1)
Insulation class : F
Service factor : 1.15
Temperature rise : 80 K
Design : B

Rev.	Changes Summary	Performed	Checked	Date
Performed by				Page 6 / 6
Checked by				
Date				
	10/04/2020			Revision





Severe Duty

PH	FR	HP(kW)		Hz	
V —	A —				
NEMA NOM EFF		— %	RPM		
ENCL ODP	DUTY		INS. CL.	ΔT K	
PF		DES —	CODE	AMB.	 KLUBERSYNTH BHP 72-102
SF	SFA		ALT 1000 m.a.s.l.		
					Lbs