

# DATA SHEET

## Three Phase Induction Motor - Squirrel Cage



Customer :

Product line : Rolled Steel NEMA Premium  
Efficiency Three-Phase

Product code : 14593676

Catalog # : 00718ET3EBM213T-S

Frame : 213/5T  
Output : 7.5 HP (5.5 kW)  
Poles : 4  
Frequency : 60 Hz  
Rated voltage : 230/460 V  
Rated current : 18.1/9.07 A  
L. R. Amperes : 132/66.2 A  
LRC : 7.3x(Code H)  
No load current : 8.81/4.41 A  
Rated speed : 1770 rpm  
Slip : 1.67 %  
Rated torque : 22.3 ft.lb  
Locked rotor torque : 260 %  
Breakdown torque : 300 %  
Insulation class : F  
Service factor : 1.15  
Moment of inertia (J) : 0.9380 sq.ft.lb  
Design : B

Locked rotor time : 39s (cold) 22s (hot)  
Temperature rise : 80 K  
Duty cycle : Cont.(S1)  
Ambient temperature : -20°C to +40°C  
Altitude : 1000 m.a.s.l.  
Protection degree : IP55  
Cooling method : IC411 - TEFC  
Mounting : F-1  
Rotation<sup>1</sup> : Both (CW and CCW)  
Noise level<sup>2</sup> : 60.0 dB(A)  
Starting method : Direct On Line  
Approx. weight<sup>3</sup> : 149 lb

Output	50%	75%	100%
Efficiency (%)	90.2	91.0	91.7
Power Factor	0.64	0.76	0.82

Foundation loads  
Max. traction : 380 lb  
Max. compression : 529 lb

	Drive end	Non drive end
Bearing type	6208 ZZ	6206 ZZ
Sealing	V'Ring	V'Ring
Lubrication interval	-	-
Lubricant amount	-	-
Lubricant type	Mobil Polyrex EM	

### Notes

USABLE @208V 20.1A SF 1.00 SFA 20.1A

This revision replaces and cancel the previous one, which must be eliminated.

- (1) Looking the motor from the shaft end.
- (2) Measured at 1m and with tolerance of +3dB(A).
- (3) Approximate weight subject to changes after manufacturing process.
- (4) At 100% of full load.

These are average values based on tests with sinusoidal power supply, subject to the tolerances stipulated in NEMA MG-1.

Rev.	Changes Summary	Performed	Checked	Date
Performed by				
Checked by				
Date	10/04/2020			

Page 1 / 7  
Revision

# DATA SHEET

## Three Phase Induction Motor - Squirrel Cage



Customer :

### Brake information

Voltage: 208-230/460//190/380 V  
Brake Torque: 34.7 ft.lb

Rev.	Changes Summary		Performed	Checked	Date
Performed by			Page 2 / 7		Revision
Checked by					
Date	10/04/2020				

# TORQUE AND CURRENT VS SPEED CURVE

## Three Phase Induction Motor - Squirrel Cage

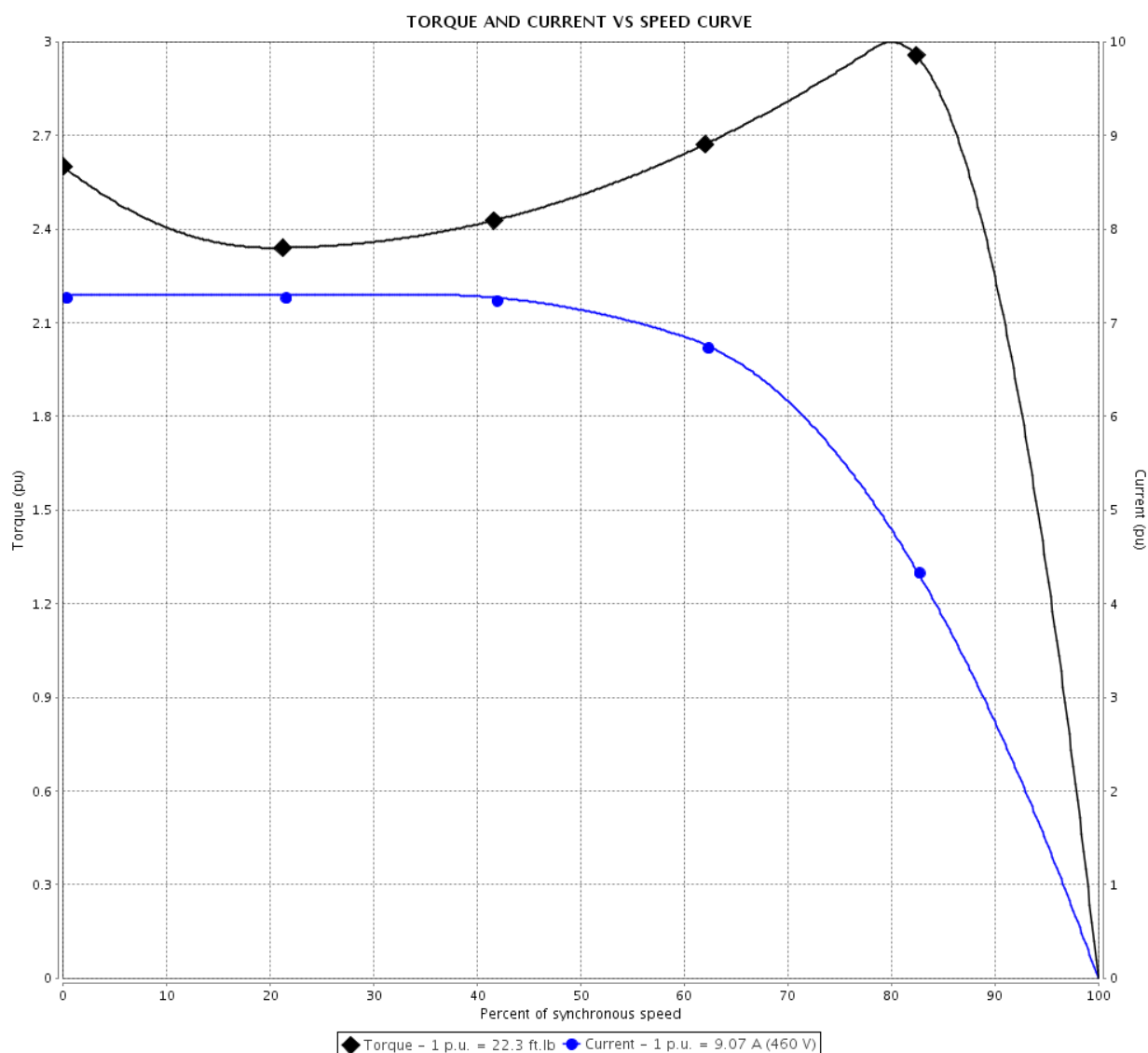


Customer :

Product line : Rolled Steel NEMA Premium  
Efficiency Three-Phase

Product code : 14593676

Catalog # : 00718ET3EBM213T-S



Performance : 230/460 V 60 Hz 4P

Rated current : 18.1/9.07 A  
LRC : 7.3  
Rated torque : 22.3 ft.lb  
Locked rotor torque : 260 %  
Breakdown torque : 300 %  
Rated speed : 1770 rpm

Moment of inertia (J) : 0.9380 sq.ft.lb  
Duty cycle : Cont.(S1)  
Insulation class : F  
Service factor : 1.15  
Temperature rise : 80 K  
Design : B

Locked rotor time : 39s (cold) 22s (hot)

Rev.	Changes Summary	Performed	Checked	Date
Performed by		Page 3 / 7      Revision		
Checked by				
Date	10/04/2020			

# LOAD PERFORMANCE CURVE

## Three Phase Induction Motor - Squirrel Cage



Customer :

Product line

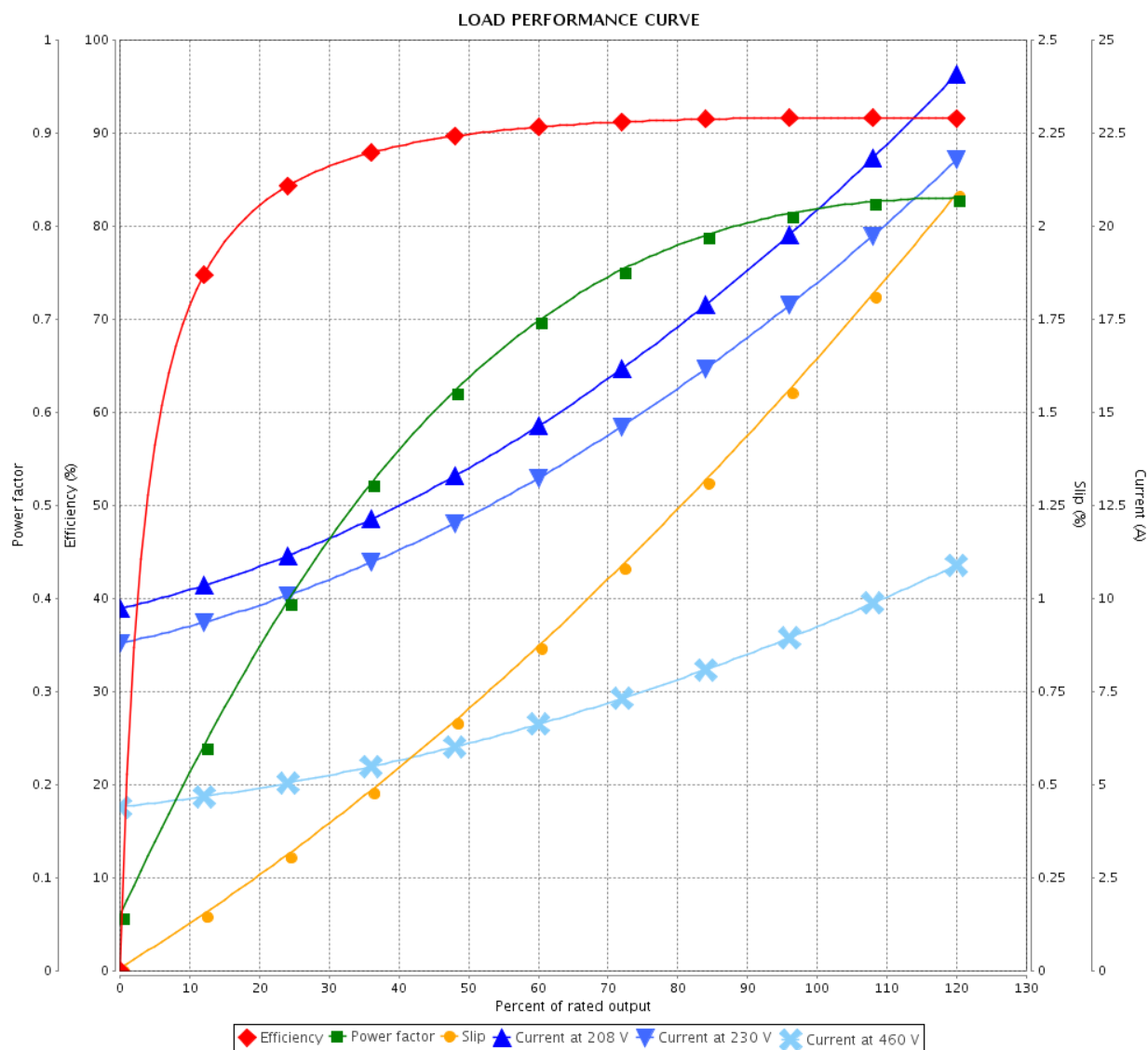
: Rolled Steel NEMA Premium  
Efficiency Three-Phase

Product code :

14593676

Catalog # :

00718ET3EBM213T-S



Performance : 230/460 V 60 Hz 4P

Rated current : 18.1/9.07 A  
LRC : 7.3  
Rated torque : 22.3 ft.lb  
Locked rotor torque : 260 %  
Breakdown torque : 300 %  
Rated speed : 1770 rpm

Moment of inertia (J) : 0.9380 sq.ft.lb  
Duty cycle : Cont.(S1)  
Insulation class : F  
Service factor : 1.15  
Temperature rise : 80 K  
Design : B

Rev.	Changes Summary		Performed	Checked	Date
Performed by				Page	Revision
Checked by				4 / 7	
Date					

# THERMAL LIMIT CURVE

## Three Phase Induction Motor - Squirrel Cage



Customer :

Product line : Rolled Steel NEMA Premium  
Efficiency Three-Phase

Product code : 14593676

Catalog # : 00718ET3EBM213T-S

Performance : 230/460 V 60 Hz 4P

Rated current : 18.1/9.07 A  
LRC : 7.3  
Rated torque : 22.3 ft.lb  
Locked rotor torque : 260 %  
Breakdown torque : 300 %  
Rated speed : 1770 rpm

Moment of inertia (J) : 0.9380 sq.ft.lb  
Duty cycle : Cont.(S1)  
Insulation class : F  
Service factor : 1.15  
Temperature rise : 80 K  
Design : B

Heating constant

Cooling constant

Rev.	Changes Summary	Performed	Checked	Date
Performed by		Page 5 / 7		Revision
Checked by				
Date	10/04/2020			

This document is exclusive property of WEG S/A. Reprinting is not allowed without written authorization of WEG S/A.

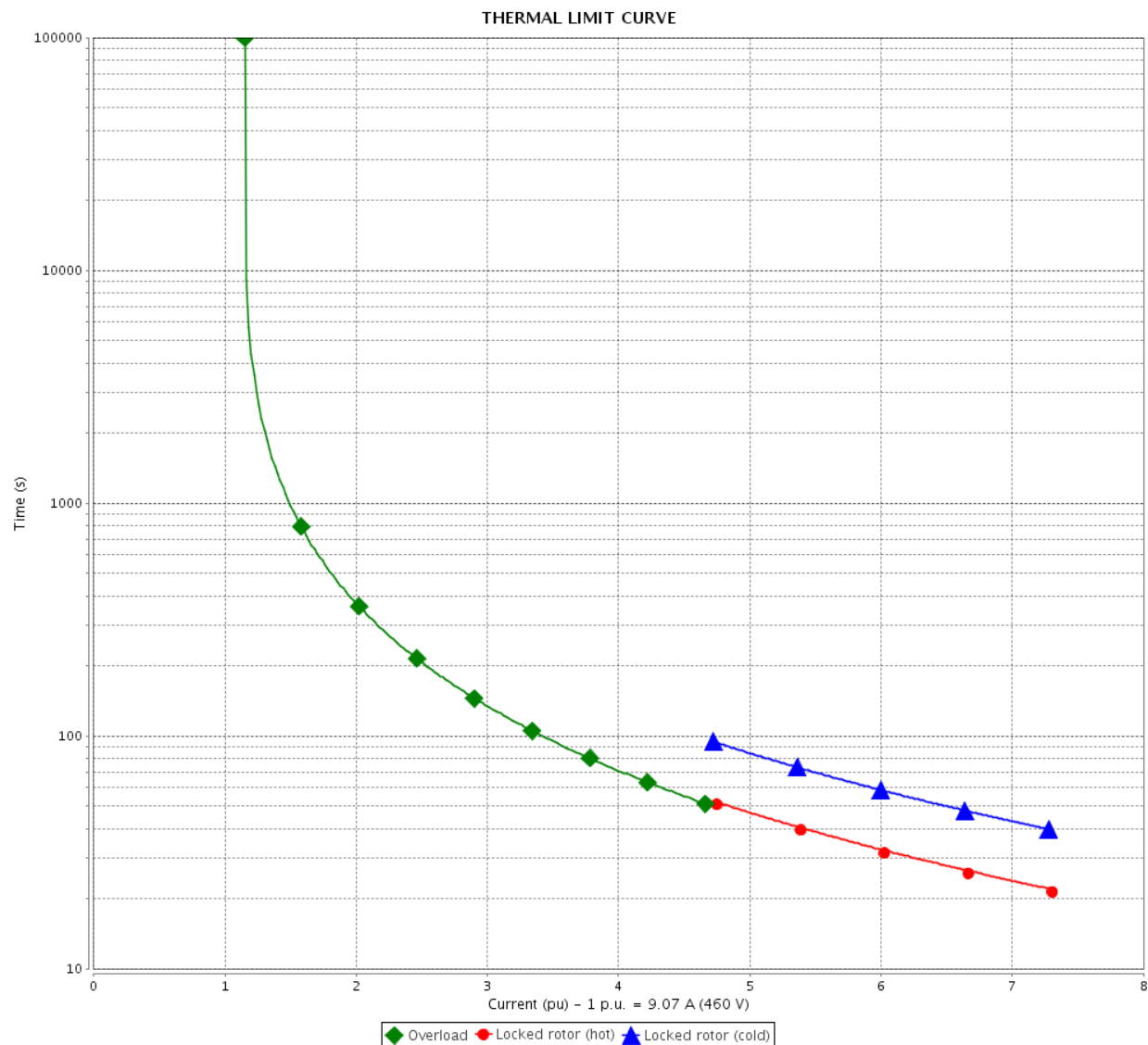
Subject to change without notice

# THERMAL LIMIT CURVE

Three Phase Induction Motor - Squirrel Cage



Customer :



Rev.	Changes Summary		Performed	Checked	Date
Performed by				Page	Revision
Checked by				6 / 7	
Date	10/04/2020				

# VFD OPERATION CURVE

Three Phase Induction Motor - Squirrel Cage

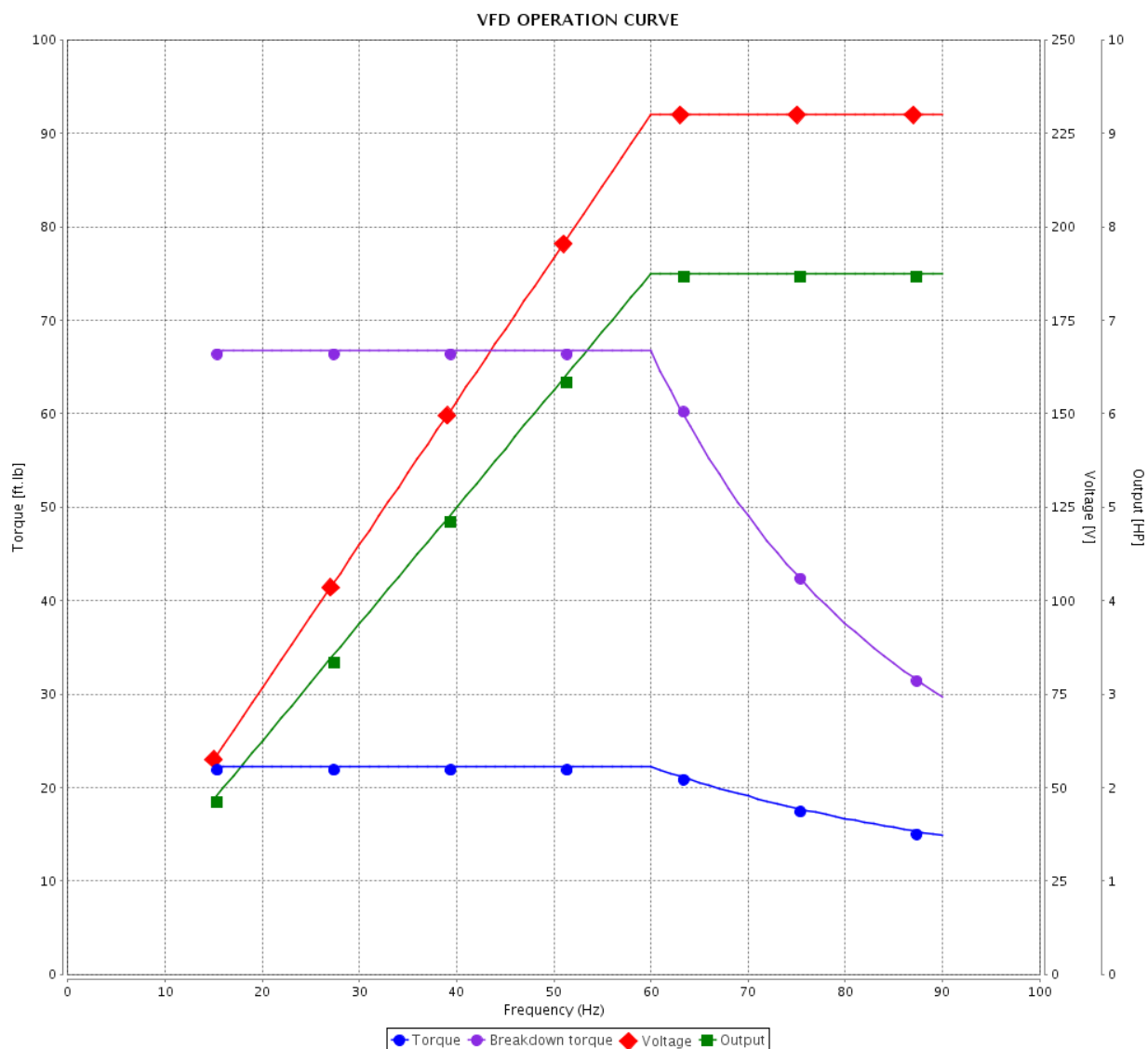


Customer :

Product line : Rolled Steel NEMA Premium  
Efficiency Three-Phase

Product code : 14593676

Catalog # : 00718ET3EBM213T-S

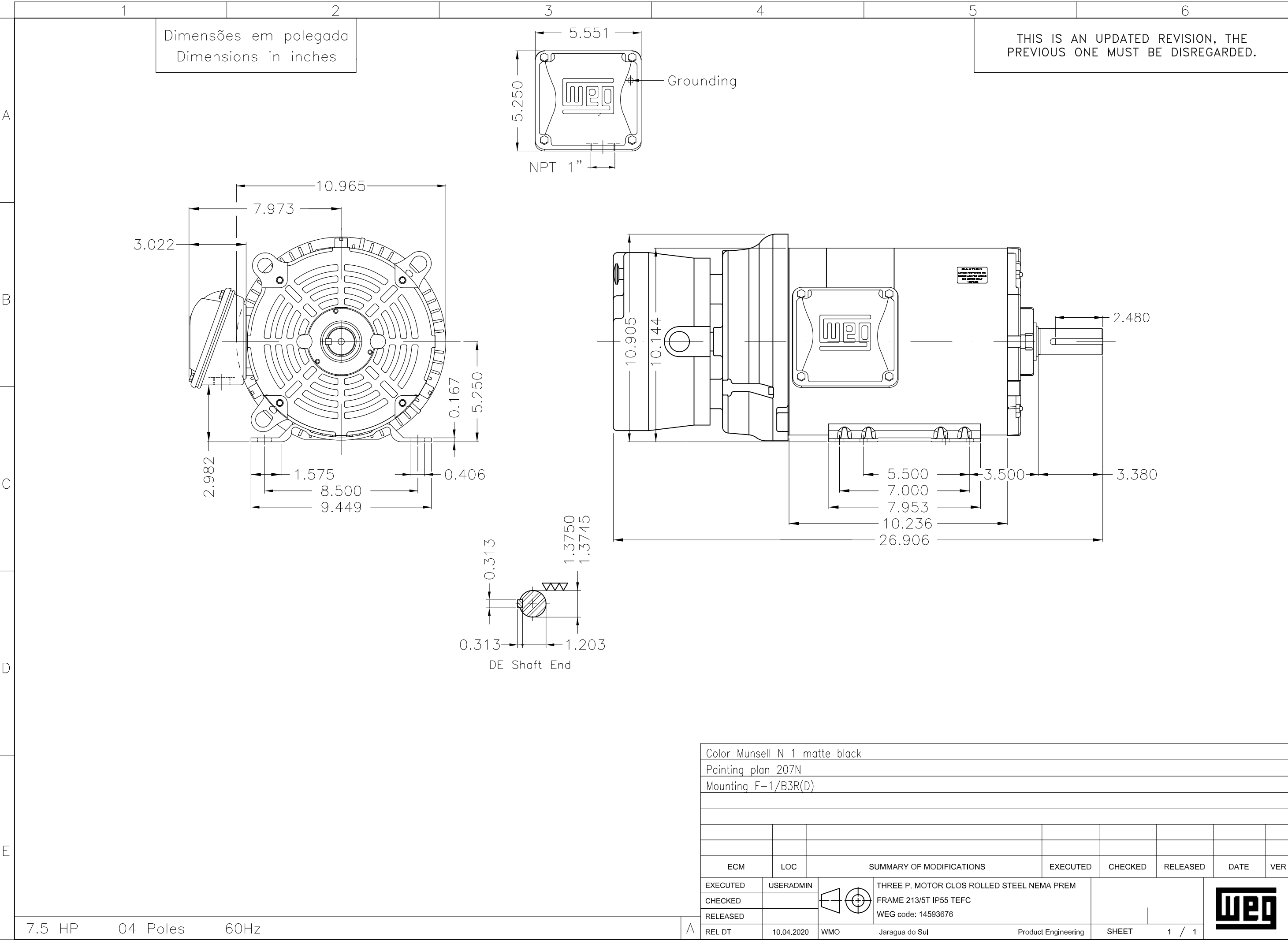


Performance : 230/460 V 60 Hz 4P

Rated current : 18.1/9.07 A  
LRC : 7.3  
Rated torque : 22.3 ft.lb  
Locked rotor torque : 260 %  
Breakdown torque : 300 %  
Rated speed : 1770 rpm

Moment of inertia (J) : 0.9380 sq.ft.lb  
Duty cycle : Cont.(S1)  
Insulation class : F  
Service factor : 1.15  
Temperature rise : 80 K  
Design : B

Rev.	Changes Summary	Performed	Checked	Date
Performed by		Page 7 / 7		
Checked by				
Date	10/04/2020			
			Revision	







**NEMA**  
**Premium**



3PT9  
UL C US LISTED  
FOR SAFE AREA



Energy Verified

MADE IN MEXICO

**MAT: 14593676 CC029A**

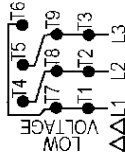
**W01.TE0IC0X0N**

**MODEL 00718ET3EBM213T-S**

**25MAR2019 S/N:**

**For 60Hz: Class I, Zone 2, IIC**  
**Class I, Div.2, Gr. A,B,C,D - T3**  
**Div 2 Inverter Duty (SF1.00)**  
**CT 2:1/VT 1000:1**

<b>PH 3</b>	<b>FR</b>	<b>213/5T</b>	<b>HP(KW)</b>	<b>7.5(5.5)</b>	<b>Hz</b>	<b>60</b>
<b>V</b>	<b>230/460</b>		<b>RPM</b>	<b>1770</b>		
<b>A</b>	<b>18.1/9.07</b>		<b>DUTY CONT.</b>			
<b>SFA</b>	<b>20.8/10.4</b>		<b>CODE</b>	<b>H</b>	<b>DES</b>	<b>B IP55</b>
<b>SF</b>	<b>1.15</b>	<b>INS CL F</b>	<b>AT</b>	<b>80K</b>	<b>AMB</b>	<b>40°C ENCL TEFC</b>
<b>PF</b>	<b>0.82</b>		<b>NEMA NOM.EFF. 91.7%</b>			
<b>ALT</b>	<b>1000</b>	<b>m.a.s.l.</b>	<b>USABLE @</b>	<b>208V</b>	<b>20.1A</b>	<b>SF1.00</b>
<b>ALTERNATE RATING: 7.5HP 50Hz 190-220/380-415V SF1.00</b>						
<b>22.0-19.4/11.0-10.3A 1455RPM EFF 88.6% (IE2) IEC 60034-1</b>						



**INTERCHANGE ANY TWO LINE WIRES TO REVERSE THE ROTATION**

**For safe area-Inverter duty For 60Hz use on VPWM 1000:1 VT, 4:1 CT**

**DE: 6208-ZZ ODE: 6206-ZZ MOBIL POLYREX EM**

**WARNING: Motor must be grounded in accordance with local and national electrical codes to prevent serious electrical shocks. Disconnect power source before servicing unit.**

**AVERTISSEMENT: Le moteur doit être mis à la terre conformément aux codes électriques locaux et nationaux afin d'éviter tout choc électrique grave. Déconnectez l'alimentation avant l'entretien de la machine.**

