

# DATA SHEET

## Three Phase Induction Motor - Squirrel Cage



Customer :				
Product line		: Rolled Steel Three-Phase		Product code : 14593668 Catalog # : 00118ET3EBM56-S
Frame	: 56	Locked rotor time	: 34s (cold) 19s (hot)	
Output	: 1 HP (0.75 kW)	Temperature rise	: 80 K	
Poles	: 4	Duty cycle	: Cont.(S1)	
Frequency	: 60 Hz	Ambient temperature	: -20°C to +40°C	
Rated voltage	: 230/460 V	Altitude	: 1000 m.a.s.l.	
Rated current	: 2.94/1.47 A	Protection degree	: IP55	
L. R. Amperes	: 25.3/12.6 A	Cooling method	: IC411 - TEFC	
LRC	: 8.6x(Code M)	Mounting	: F-1	
No load current	: 1.78/0.890 A	Rotation <sup>1</sup>	: Both (CW and CCW)	
Rated speed	: 1765 rpm	Noise level <sup>2</sup>	: 52.0 dB(A)	
Slip	: 1.94 %	Starting method	: Direct On Line	
Rated torque	: 2.98 ft.lb	Approx. weight <sup>3</sup>	: 48.1 lb	
Locked rotor torque	: 280 %			
Breakdown torque	: 300 %			
Insulation class	: F			
Service factor	: 1.15			
Moment of inertia (J)	: 0.1232 sq.ft.lb			
Design	: B			
Output	50%	75%	100%	Foundation loads
Efficiency (%)	82.5	84.0	85.5	Max. traction : 92 lb
Power Factor	0.52	0.66	0.75	Max. compression : 140 lb
		<u>Drive end</u>	<u>Non drive end</u>	
Bearing type	:	6204 ZZ	6203 ZZ	
Sealing	:	V'Ring	V'Ring	
Lubrication interval	:	-	-	
Lubricant amount	:	-	-	
Lubricant type	:	Mobil Polyrex EM		
<b>Notes</b> USABLE @208V 3.25A SF 1.00 SFA 3.25A				
This revision replaces and cancel the previous one, which must be eliminated. (1) Looking the motor from the shaft end. (2) Measured at 1m and with tolerance of +3dB(A). (3) Approximate weight subject to changes after manufacturing process. (4) At 100% of full load.			These are average values based on tests with sinusoidal power supply, subject to the tolerances stipulated in NEMA MG-1.	
Rev.	Changes Summary		Performed	Checked
Performed by				
Checked by				
Date	10/04/2020			
			Page	Revision
			1 / 6	

# DATA SHEET

## Three Phase Induction Motor - Squirrel Cage



Customer :

### Brake information

Voltage: 208-230/460//190/380 V  
Brake Torque: 5.90 ft.lb

Rev.	Changes Summary		Performed	Checked	Date
Performed by			Page 2 / 6		Revision
Checked by					
Date	10/04/2020				

# TORQUE AND CURRENT VS SPEED CURVE

## Three Phase Induction Motor - Squirrel Cage



Customer :

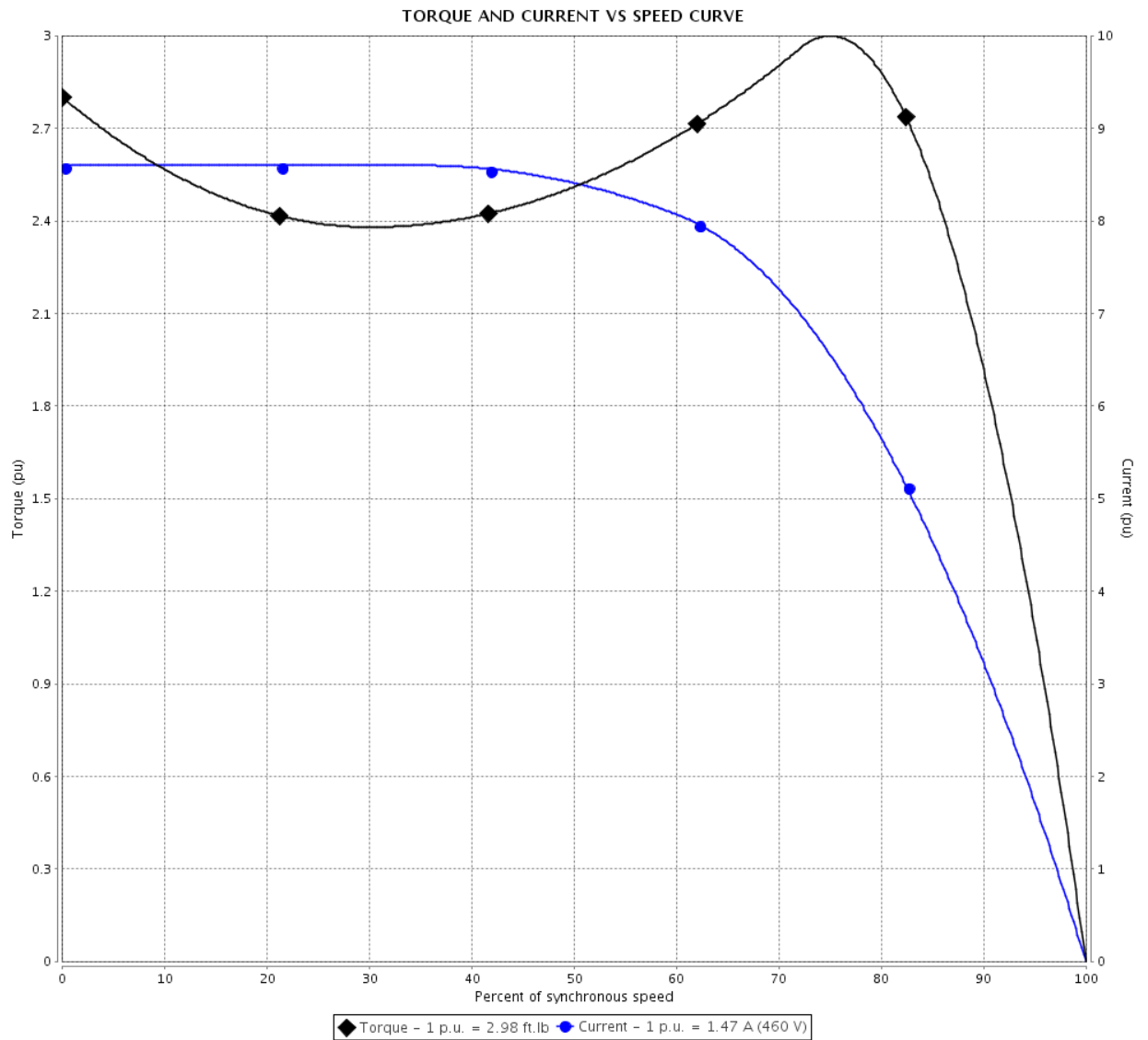
Product line : Rolled Steel Three-Phase

Product code :

14593668

Catalog # :

00118ET3EBM56-S



Performance : 230/460 V 60 Hz 4P

Rated current : 2.94/1.47 A  
 LRC : 8.6  
 Rated torque : 2.98 ft.lb  
 Locked rotor torque : 280 %  
 Breakdown torque : 300 %  
 Rated speed : 1765 rpm

Moment of inertia (J) : 0.1232 sq.ft.lb  
 Duty cycle : Cont.(S1)  
 Insulation class : F  
 Service factor :  
 Temperature rise : 80 K  
 Design : B

Locked rotor time : 34s (cold) 19s (hot)

Rev.	Changes Summary	Performed	Checked	Date
Performed by		Page 3 / 6		
Checked by				
Date	10/04/2020			
		Revision		

# LOAD PERFORMANCE CURVE

## Three Phase Induction Motor - Squirrel Cage



Customer :

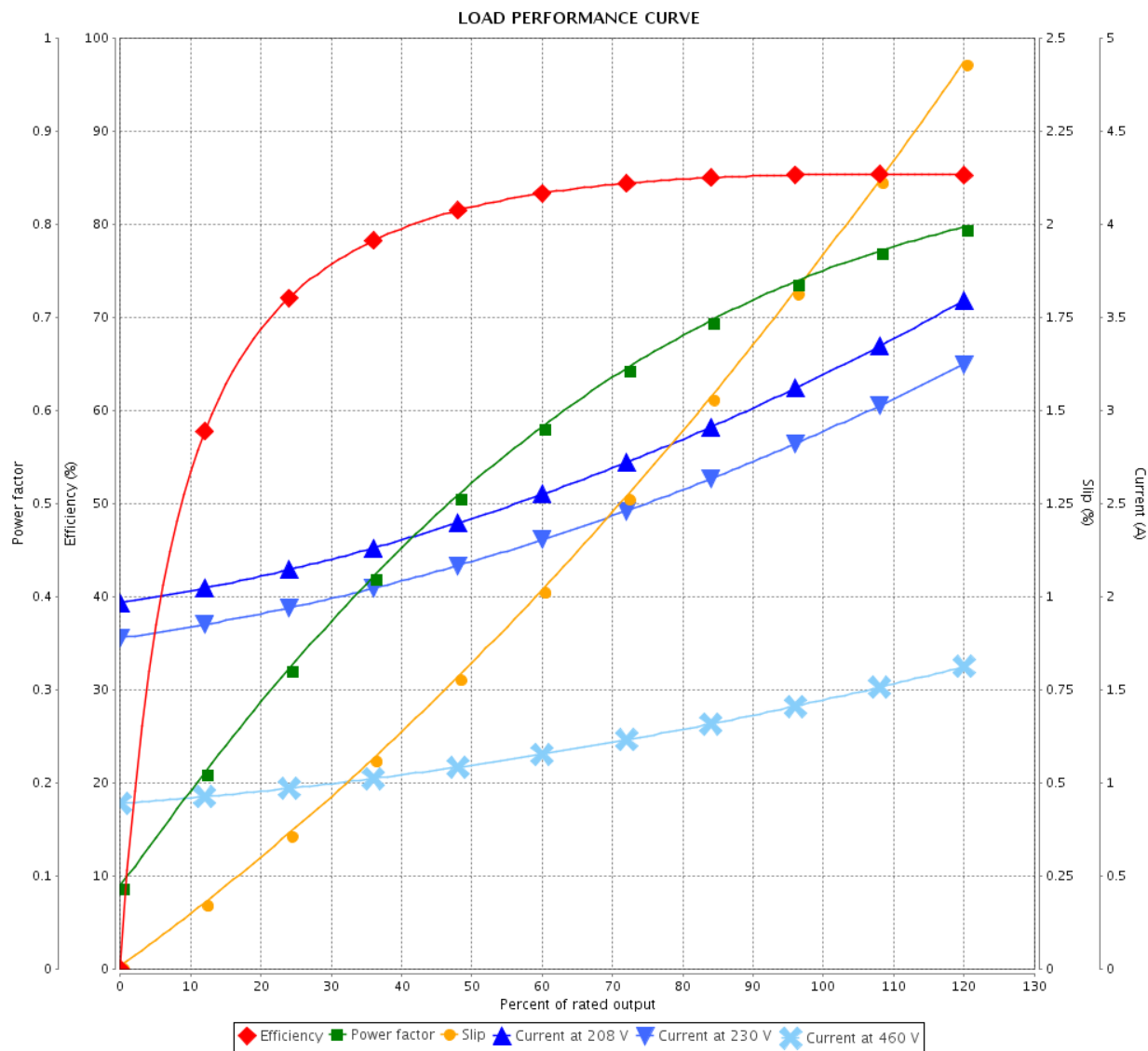
Product line : Rolled Steel Three-Phase

Product code :

14593668

Catalog # :

00118ET3EBM56-S



Performance : 230/460 V 60 Hz 4P

Rated current : 2.94/1.47 A  
 LRC : 8.6  
 Rated torque : 2.98 ft.lb  
 Locked rotor torque : 280 %  
 Breakdown torque : 300 %  
 Rated speed : 1765 rpm

Moment of inertia (J) : 0.1232 sq.ft.lb  
 Duty cycle : Cont.(S1)  
 Insulation class : F  
 Service factor :  
 Temperature rise : 80 K  
 Design : B

Rev.	Changes Summary	Performed	Checked	Date
Performed by				Page 4 / 6
Checked by				
Date				
	10/04/2020			Revision

# THERMAL LIMIT CURVE

## Three Phase Induction Motor - Squirrel Cage



Customer :

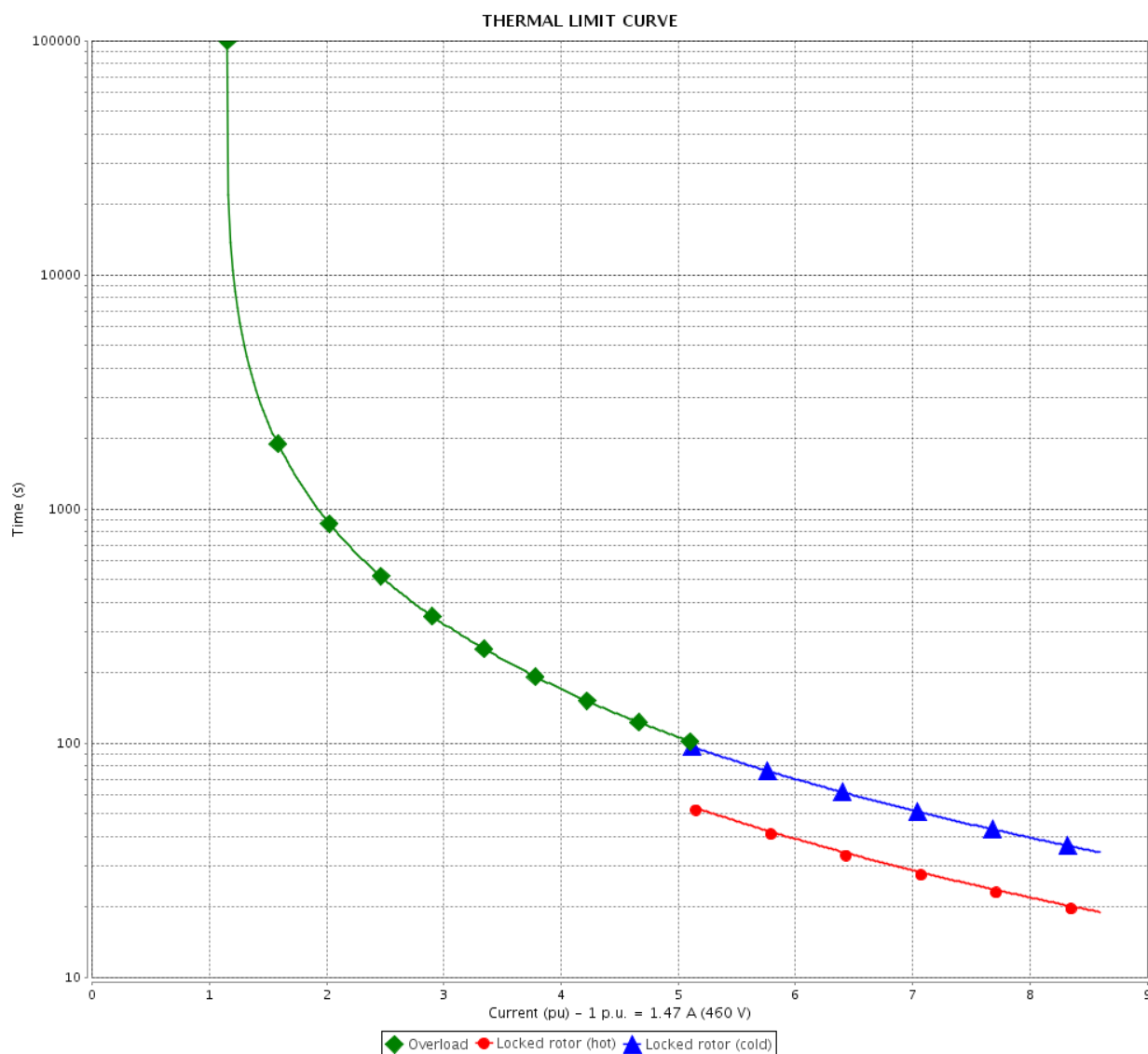
Product line : Rolled Steel Three-Phase

Product code :

14593668

Catalog # :

00118ET3EBM56-S



Performance : 230/460 V 60 Hz 4P

Rated current : 2.94/1.47 A  
 LRC : 8.6  
 Rated torque : 2.98 ft.lb  
 Locked rotor torque : 280 %  
 Breakdown torque : 300 %  
 Rated speed : 1765 rpm

Moment of inertia (J) : 0.1232 sq.ft.lb  
 Duty cycle : Cont.(S1)  
 Insulation class : F  
 Service factor :  
 Temperature rise : 80 K  
 Design : B

Heating constant

Cooling constant

Rev.	Changes Summary	Performed	Checked	Date
Performed by		Page 5 / 6		
Checked by				
Date	10/04/2020			
		Revision		

# VFD OPERATION CURVE

Three Phase Induction Motor - Squirrel Cage



Customer :

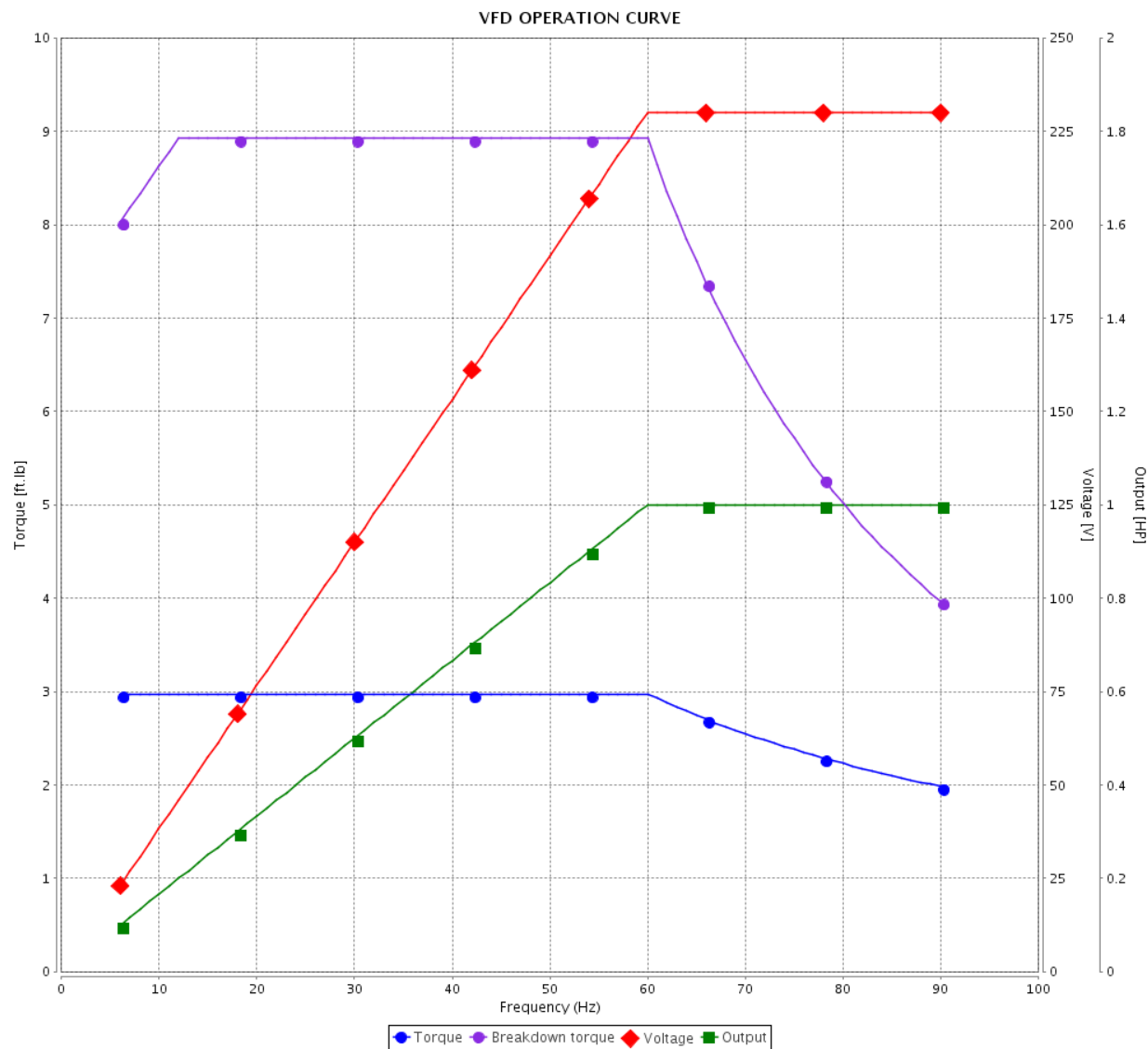
Product line : Rolled Steel Three-Phase

Product code :

14593668

Catalog # :

00118ET3EBM56-S

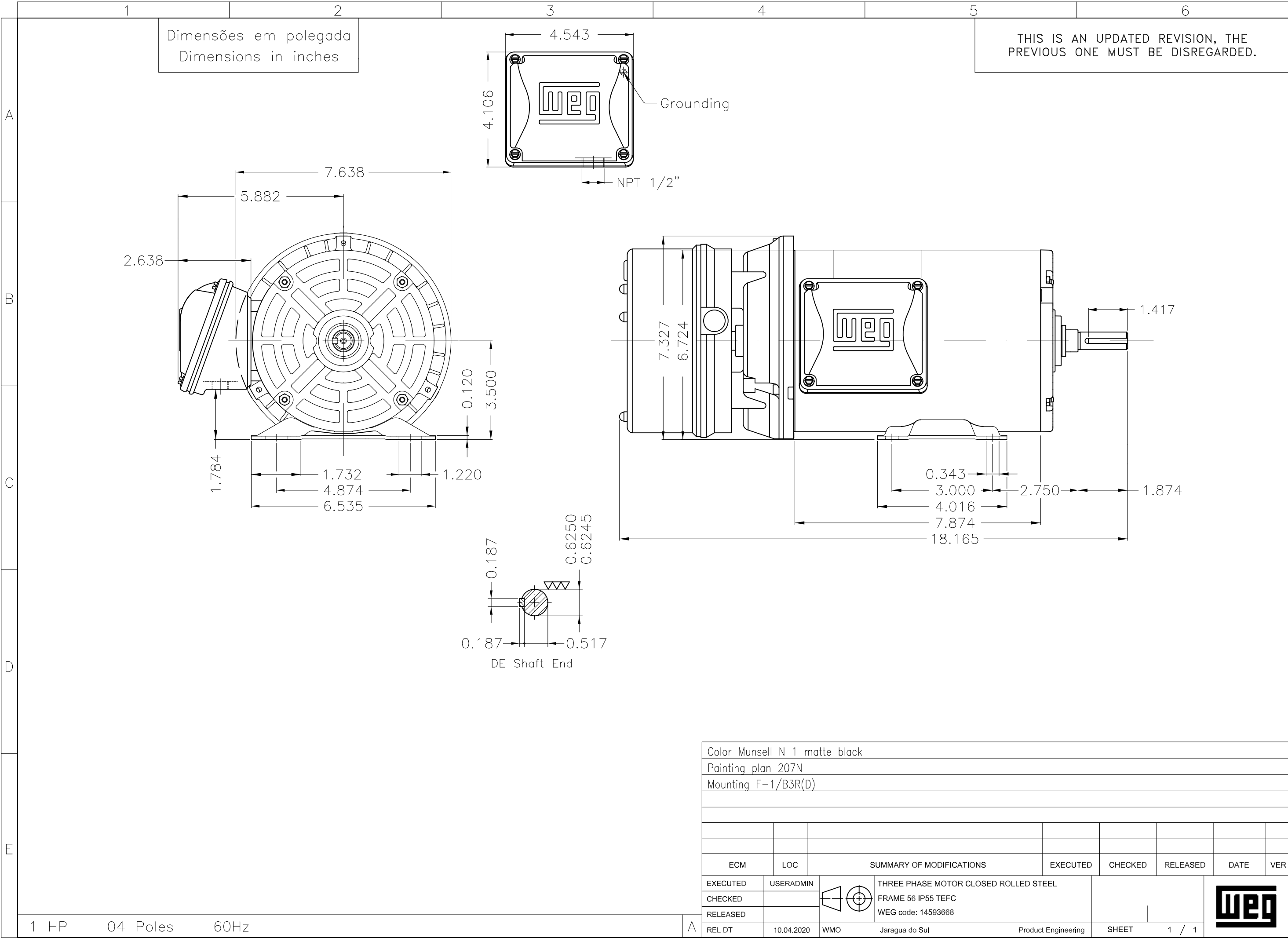


Performance : 230/460 V 60 Hz 4P

Rated current : 2.94/1.47 A  
 LRC : 8.6  
 Rated torque : 2.98 ft.lb  
 Locked rotor torque : 280 %  
 Breakdown torque : 300 %  
 Rated speed : 1765 rpm

Moment of inertia (J) : 0.1232 sq.ft.lb  
 Duty cycle : Cont.(S1)  
 Insulation class : F  
 Service factor :  
 Temperature rise : 80 K  
 Design : B

Rev.	Changes Summary		Performed	Checked	Date
Performed by		Page 6 / 6			Revision
Checked by					
Date	10/04/2020				



Color Munsell N 1 matte black

Painting plan 207N

Mounting F-1/B3R(D)

1 HP

04 Poles

60Hz

A

WEG

ZME A3



**NEMA**  
**Premium**

**UL** C<sup>3</sup>PT9  
US LISTED  
FOR SAFE AREA

**SP** C<sup>3</sup>PT9  
US  
Energy Verified

MADE IN MEXICO

**MAT: 14593668 CC029A**

**W01.TE0IC0X0X**

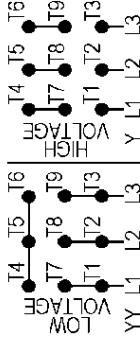
**MODEL 00118ET3EBM56-S**  
**28MAR2019**

**For 60Hz: Class I, Zone 2, IIC**  
**Class I, Div.2, Gr. A,B,C,D - T3**  
**Div 2 Inverter Duty (SF1.00)**  
**CT 2:1/VT 1000:1**

<b>PH 3</b>	<b>FR</b>	<b>56</b>	<b>HP(KW)</b>	<b>1.0(0.75)</b>	<b>Hz</b>	<b>60</b>
<b>V</b>	<b>230/460</b>		<b>RPM</b>	<b>1765</b>		
<b>A</b>	<b>2.94/1.47</b>		<b>DUTY CONT.</b>			
<b>SFA</b>	<b>3.38/1.69</b>		<b>CODE M</b>	<b>DES B</b>	<b>IP55</b>	
<b>SF</b>	<b>1.15</b>	<b>INS CL F</b>	<b>AT</b>	<b>80K</b>	<b>AMB</b>	<b>40°C</b>
<b>PF</b>	<b>0.75</b>				<b>ENCL</b>	<b>TEFC</b>
				<b>NEMA NOM.EFF.</b>		<b>85.5%</b>

**ALT 1000 m.a.s.l. USABLE @ 208V 3.25A SF1.00**

**ALTERNATE RATING: 1.0HP 50Hz 190-220/380-415V SF1.00**  
**3.40-3.06/1.70-1.62A 1450RPM EFF 82.9% (IE3) IEC 60034-1**



**INTERCHANGE ANY TWO LINE WIRES TO REVERSE THE ROTATION**

**For safe area-Inverter duty For 60Hz use on VPWM 1000:1 VT, 5:1 CT**

**DE: 6204-ZZ ODE: 6203-ZZ MOBIL POLYREX EM**

**WARNING: Motor must be grounded in accordance with local and national electrical codes to prevent serious electrical shocks. Disconnect power source before servicing unit.**

**AVERTISSEMENT: Le moteur doit être mis à la terre conformément aux codes électriques locaux et nationaux afin d'éviter tout choc électrique grave. Déconnectez l'alimentation avant l'entretien de la machine.**

