

DATA SHEET

Three Phase Induction Motor - Squirrel Cage



Customer :

Product line : W40 JP Pump High Efficiency
Three-Phase

Product code : 14829365

Catalog # : 06036OP3HFP326JPV-W4

Frame : 324/6JP
Output : 60 HP (45 kW)
Poles : 2
Frequency : 60 Hz
Rated voltage : 575 V
Rated current : 56.5 A
L. R. Amperes : 333 A
LRC : 5.9x(Code F)
No load current : 16.2 A
Rated speed : 3555 rpm
Slip : 1.25 %
Rated torque : 88.6 ft.lb
Locked rotor torque : 180 %
Breakdown torque : 200 %
Insulation class : F
Service factor : 1.15
Moment of inertia (J) : 3.41 sq.ft.lb
Design : B

Locked rotor time : 30s (cold) 17s (hot)
Temperature rise : 80 K
Duty cycle : Cont.(S1)
Ambient temperature : -20°C to +40°C
Altitude : 1000 m.a.s.l.
Protection degree : IP23
Cooling method : IC01 - ODP
Mounting : W-6
Rotation¹ : Both (CW and CCW)
Starting method : Direct On Line
Approx. weight³ : 458 lb

Output 25% 50% 75% 100%

Efficiency (%) 92.3 92.4 93.0 93.0
Power Factor 0.54 0.78 0.84 0.86

Foundation loads

Max. traction
Max. compression

	Drive end	Non drive end
Bearing type :	6312 Z C3	6211 Z C3
Sealing :	Without Bearing Seal	Without Bearing Seal
Lubrication interval :	9829 h	14226 h
Lubricant amount :	21 g	11 g
Lubricant type :	Mobil Polyrex EM	

Notes

This revision replaces and cancel the previous one, which must be eliminated.

- (1) Looking the motor from the shaft end.
- (2) Measured at 1m and with tolerance of +3dB(A).
- (3) Approximate weight subject to changes after manufacturing process.
- (4) At 100% of full load.

These are average values based on tests with sinusoidal power supply, subject to the tolerances stipulated in NEMA MG-1.

Rev.	Changes Summary	Performed	Checked	Date
Performed by		Page Revision 1 / 6		
Checked by				
Date	10/04/2020			

TORQUE AND CURRENT VS SPEED CURVE

Three Phase Induction Motor - Squirrel Cage

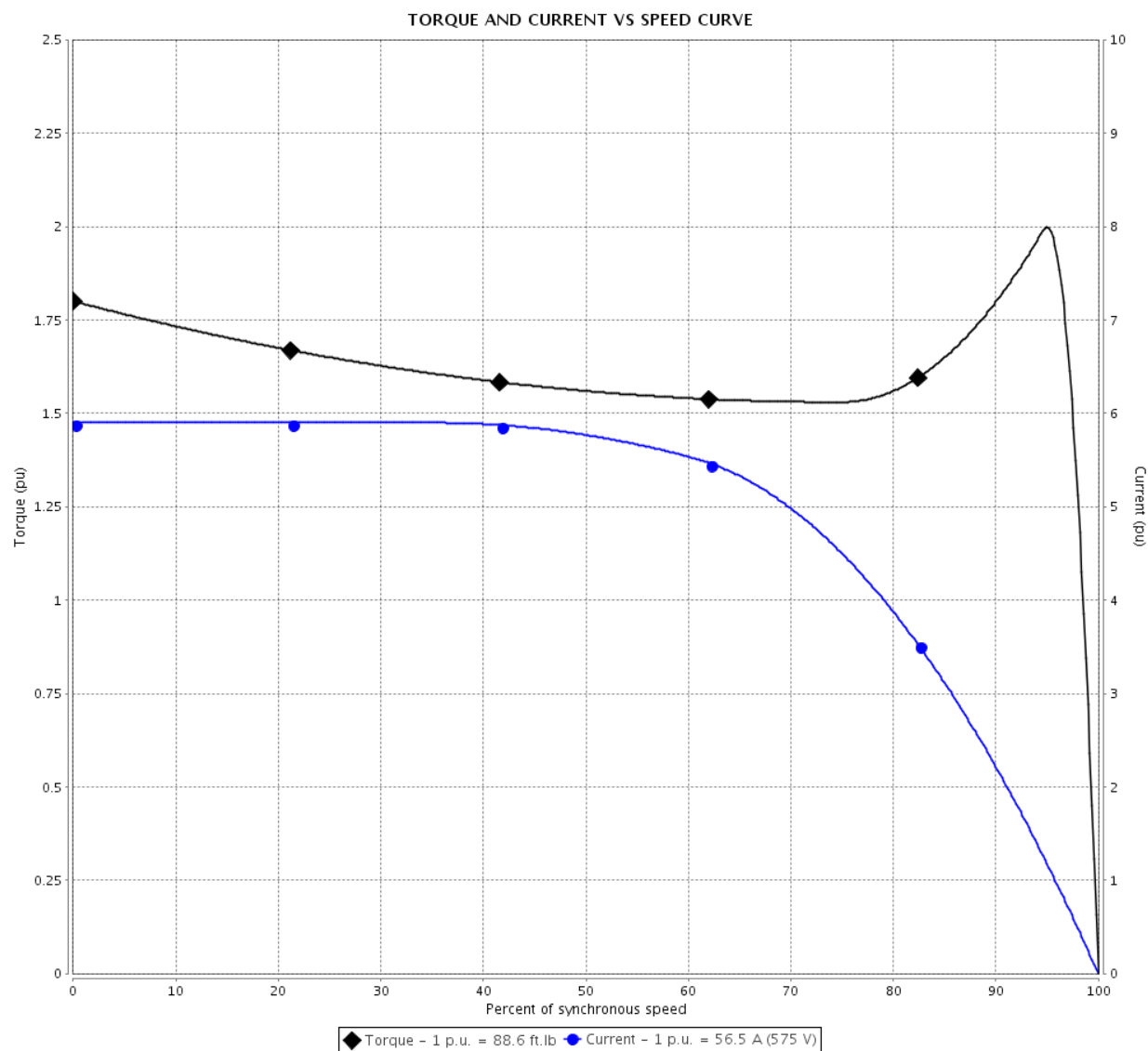


Customer :

Product line : W40 JP Pump High Efficiency
Three-Phase

Product code : 14829365

Catalog # : 06036OP3HFP326JPV-
W4



Performance : 575 V 60 Hz 2P

Rated current	: 56.5 A	Moment of inertia (J)	: 3.41 sq.ft.lb
LRC	: 5.9	Duty cycle	: Cont.(S1)
Rated torque	: 88.6 ft.lb	Insulation class	: F
Locked rotor torque	: 180 %	Service factor	: 1.15
Breakdown torque	: 200 %	Temperature rise	: 80 K
Rated speed	: 3555 rpm	Design	: B

Locked rotor time : 30s (cold) 17s (hot)

Rev.	Changes Summary	Performed	Checked	Date
Performed by		<div style="display: flex; justify-content: space-between;"> <div>Page 2 / 6</div> <div>Revision</div> </div>		
Checked by				
Date	10/04/2020			

LOAD PERFORMANCE CURVE

Three Phase Induction Motor - Squirrel Cage

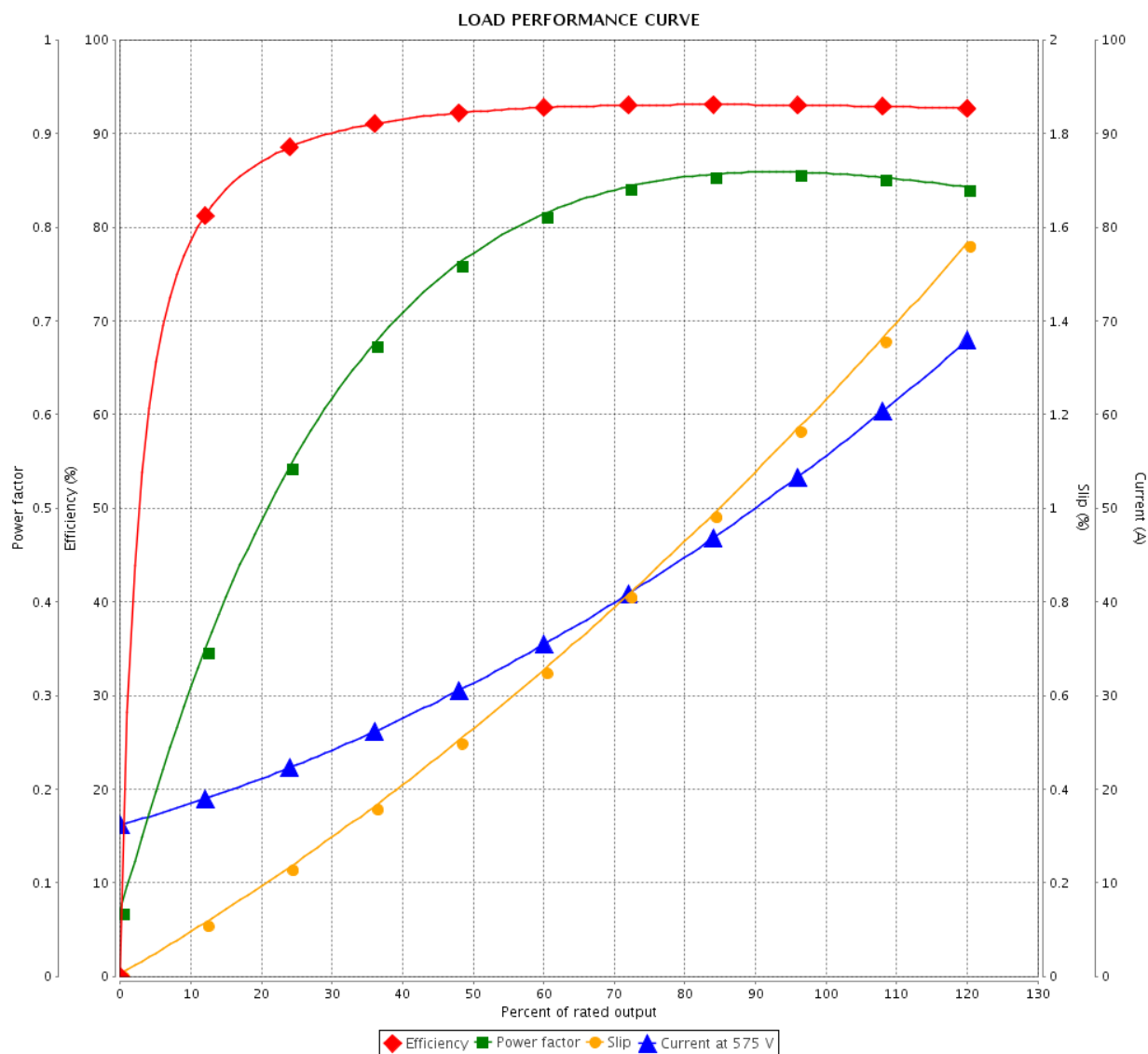


Customer :

Product line : W40 JP Pump High Efficiency
Three-Phase

Product code : 14829365

Catalog # : 06036OP3HFP326JPV-W4



Performance : 575 V 60 Hz 2P

Rated current : 56.5 A
LRC : 5.9
Rated torque : 88.6 ft.lb
Locked rotor torque : 180 %
Breakdown torque : 200 %
Rated speed : 3555 rpm

Moment of inertia (J) : 3.41 sq.ft.lb
Duty cycle : Cont.(S1)
Insulation class : F
Service factor : 1.15
Temperature rise : 80 K
Design : B

Rev.	Changes Summary	Performed	Checked	Date
Performed by		Page 3 / 6Revision		
Checked by				
Date	10/04/2020			

THERMAL LIMIT CURVE

Three Phase Induction Motor - Squirrel Cage



Customer

:

Product line

: W40 JP Pump High Efficiency
Three-Phase

Product code :

14829365

Catalog # :

06036OP3HFP326JPV-
W4

Performance : 575 V 60 Hz 2P

Rated current

: 56.5 A

LRC

: 5.9

Rated torque

: 88.6 ft.lb

Locked rotor torque

: 180 %

Breakdown torque

: 200 %

Rated speed

: 3555 rpm

Moment of inertia (J)

: 3.41 sq.ft.lb

Duty cycle

: Cont.(S1)

Insulation class

: F

Service factor

: 1.15

Temperature rise

: 80 K

Design

: B

Heating constant

Cooling constant

Rev.

Changes Summary

Performed

Checked

Date

Performed by

Checked by

Date

10/04/2020

Page

4 / 6

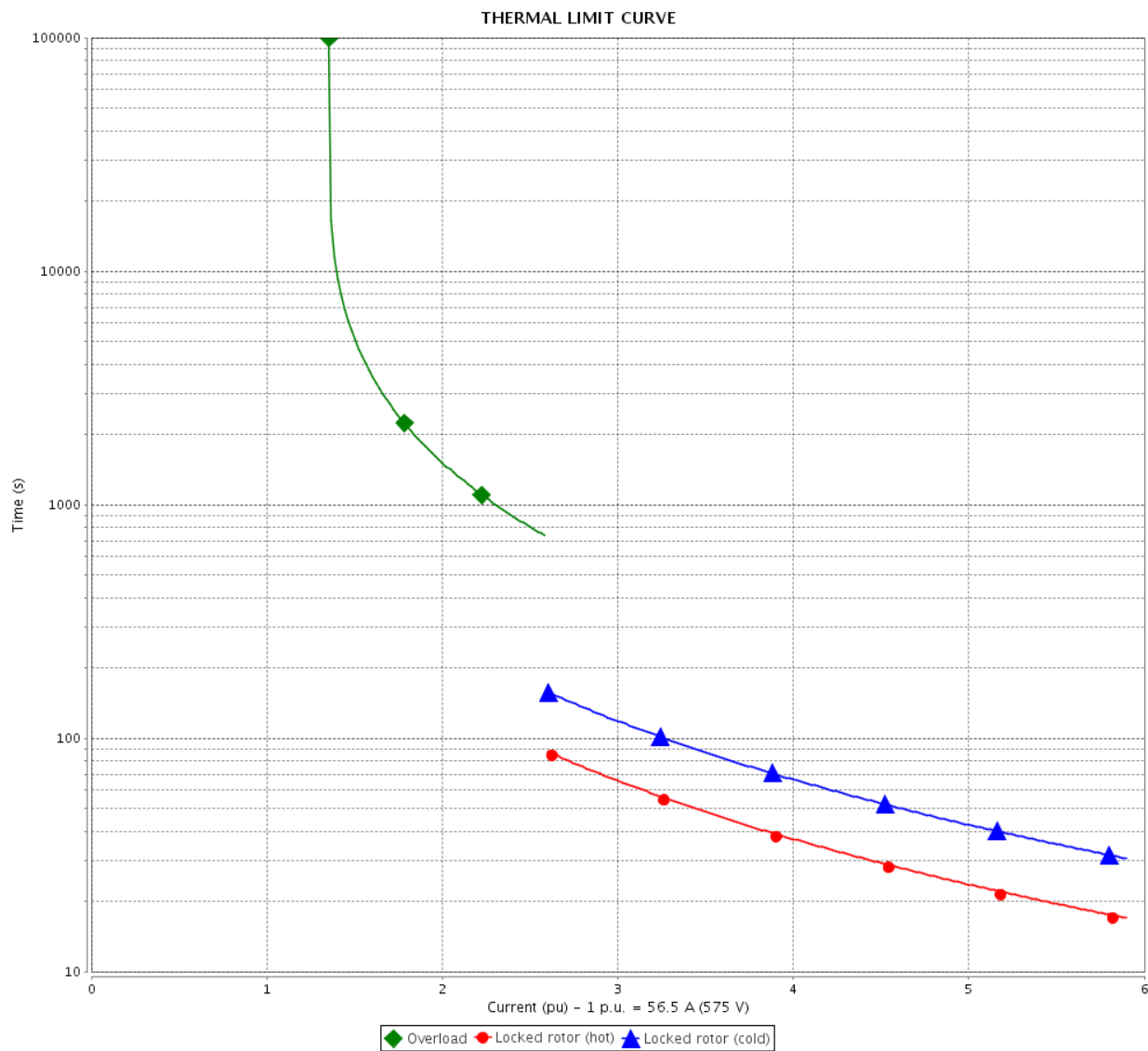
Revision

THERMAL LIMIT CURVE

Three Phase Induction Motor - Squirrel Cage



Customer : _____



Rev.	Changes Summary		Performed	Checked	Date
Performed by				Page 5 / 6	Revision
Checked by					
Date	10/04/2020				

VFD OPERATION CURVE

Three Phase Induction Motor - Squirrel Cage

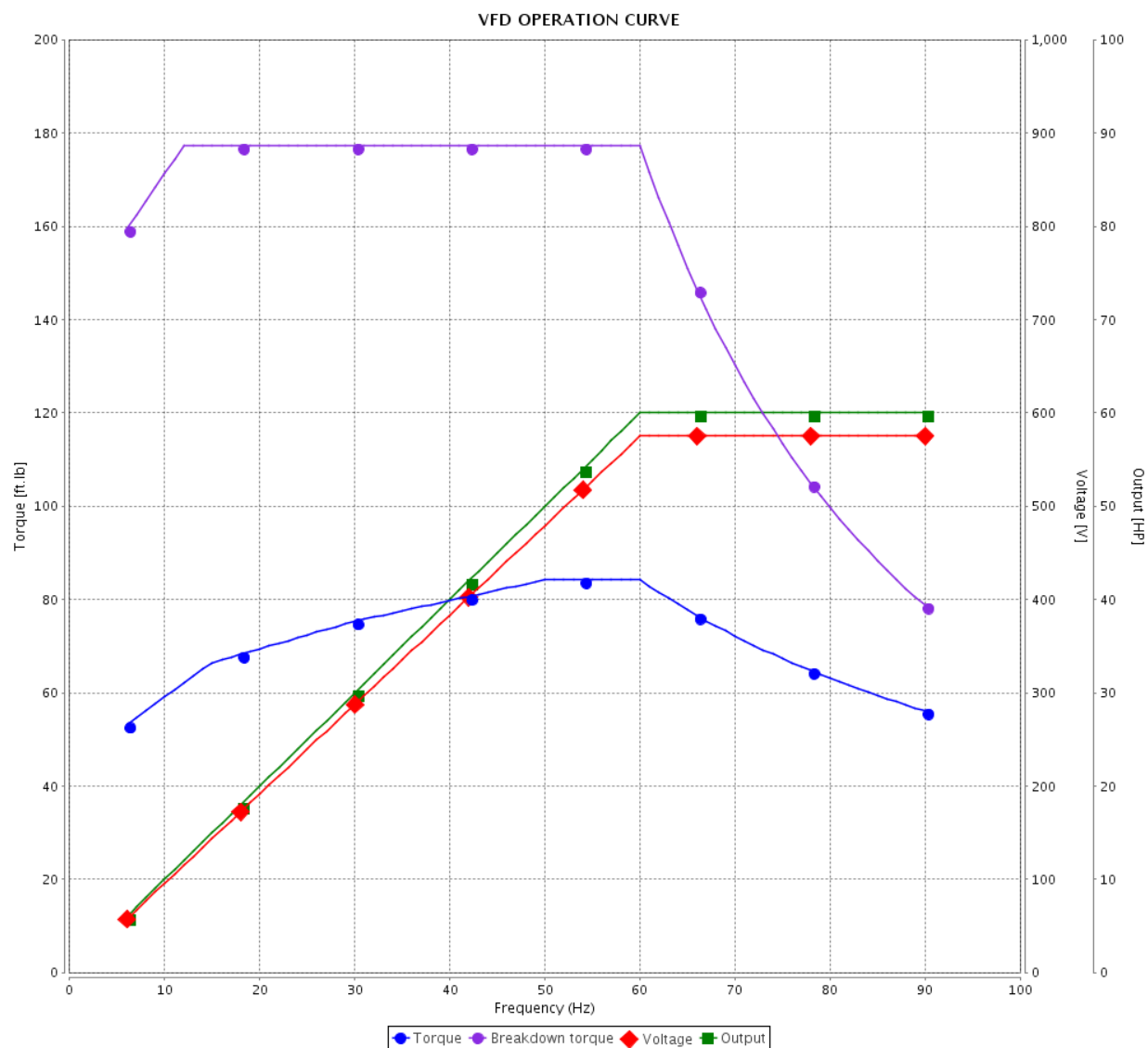


Customer :

Product line : W40 JP Pump High Efficiency
Three-Phase

Product code : 14829365

Catalog # : 06036OP3HFP326JPV-W4

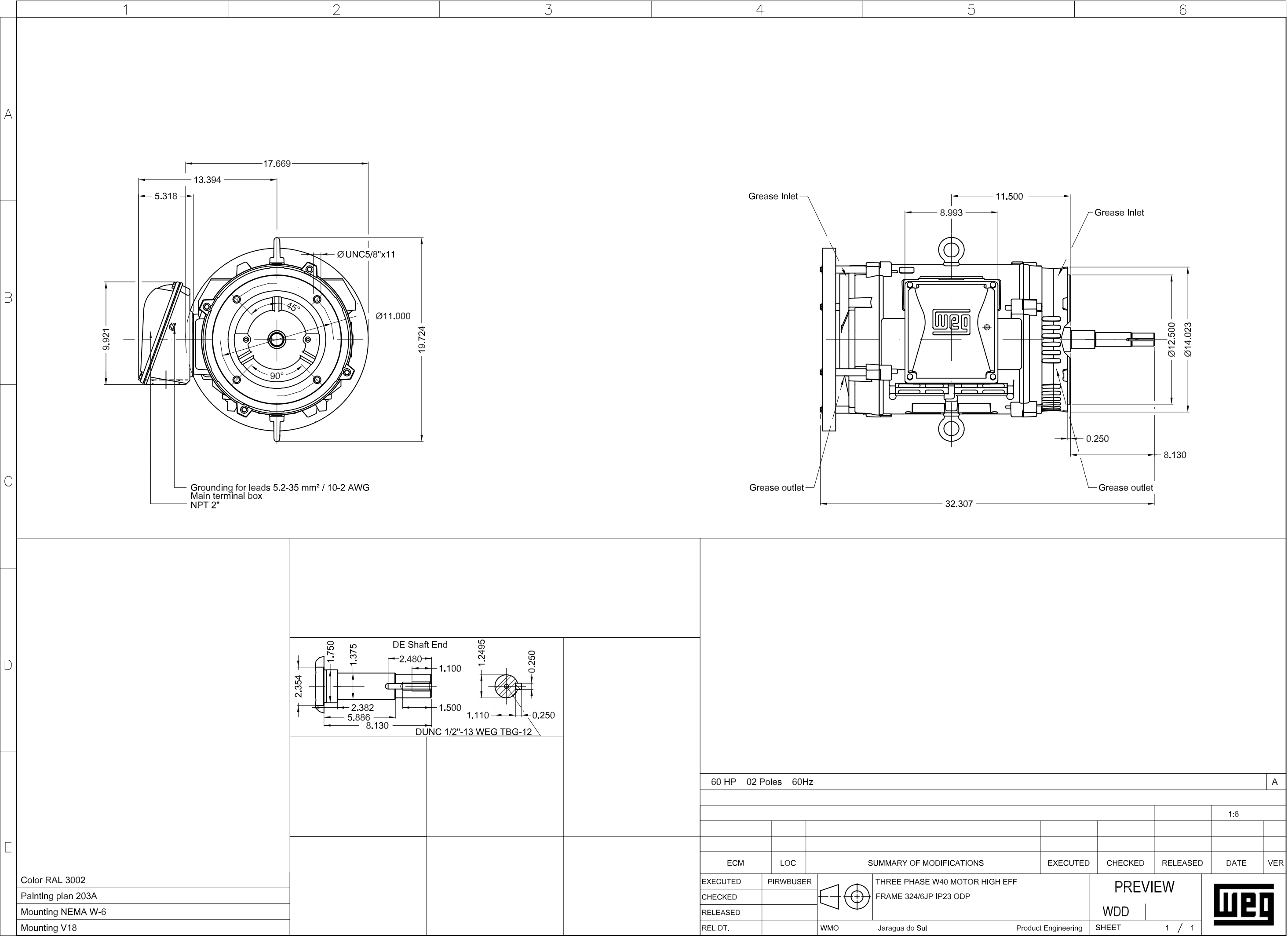


Performance : 575 V 60 Hz 2P

Rated current : 56.5 A
LRC : 5.9
Rated torque : 88.6 ft.lb
Locked rotor torque : 180 %
Breakdown torque : 200 %
Rated speed : 3555 rpm

Moment of inertia (J) : 3.41 sq.ft.lb
Duty cycle : Cont.(S1)
Insulation class : F
Service factor : 1.15
Temperature rise : 80 K
Design : B

Rev.	Changes Summary	Performed	Checked	Date
Performed by				Page 6 / 6
Checked by				
Date				
	10/04/2020			Revision



MODEL 060360P3HFP326JPV-W4
MADE IN BRAZIL
14829365



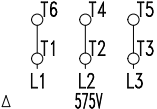

Inverter Duty Motor



MOD.T01#FOX0H



For use on PWM, VT 1000:1, CT 3:1, 1.0SF

PH 3	FR 324/6JP	HP(kW) 60(45)	Hz 60		
V 575	A 56.5	IP23			
NEMA NOM EFF	93.0 %	RPM 3555		 → 6312-Z-C3 → 6211-Z-C3	
ENCL ODP	DUTY CONT.	INS. CL. F Δ T 80 K			
PF 0.86	DES B	CODE F	AMB. 40°C	MOBIL POLYREX EM 21 g 9829 h	
SF 1.15	SFA 65.0	ALT 1000 m.a.s.l.		459 Lbs	