

# DATA SHEET

## Three Phase Induction Motor - Squirrel Cage



Customer :																													
Product line		: W40 NEMA Premium Efficiency Three-Phase		Product code : 14270886																									
				Catalog # : 06018OT3G364T-W40																									
Frame : 364/5T Output : 60 HP (45 kW) Poles : 4 Frequency : 60 Hz Rated voltage : 460 V Rated current : 69.9 A L. R. Amperes : 454 A LRC : 6.5x(Code G) No load current : 24.7 A Rated speed : 1780 rpm Slip : 1.11 % Rated torque : 177 ft.lb Locked rotor torque : 200 % Breakdown torque : 240 % Insulation class : F Service factor : 1.25 Moment of inertia (J) : 15.6 sq.ft.lb Design : B			Locked rotor time : 34s (cold) 19s (hot) Temperature rise : 80 K Duty cycle : Cont.(S1) Ambient temperature : -20°C to +40°C Altitude : 1000 m.a.s.l. Protection degree : IP23 Cooling method : IC01 - ODP Mounting : F-1 Rotation <sup>1</sup> : Both (CW and CCW) Noise level <sup>2</sup> : 69.0 dB(A) Starting method : Direct On Line Approx. weight <sup>3</sup> : 785 lb																										
Output	25%	50%	75%	100%	Foundation loads																								
Efficiency (%)	94.4	94.5	95.0	95.0	Max. traction : 1243 lb																								
Power Factor	0.48	0.73	0.82	0.85	Max. compression : 2028 lb																								
<table border="0"> <tr> <td></td> <td></td> <td><u>Drive end</u></td> <td><u>Non drive end</u></td> </tr> <tr> <td>Bearing type</td> <td>:</td> <td>6314 C3</td> <td>6212 Z C3</td> </tr> <tr> <td>Sealing</td> <td>:</td> <td>Without Bearing Seal</td> <td>Without Bearing Seal</td> </tr> <tr> <td>Lubrication interval</td> <td>:</td> <td>20000 h</td> <td>20000 h</td> </tr> <tr> <td>Lubricant amount</td> <td>:</td> <td>27 g</td> <td>13 g</td> </tr> <tr> <td>Lubricant type</td> <td>:</td> <td colspan="2">Mobil Polyrex EM</td> </tr> </table>								<u>Drive end</u>	<u>Non drive end</u>	Bearing type	:	6314 C3	6212 Z C3	Sealing	:	Without Bearing Seal	Without Bearing Seal	Lubrication interval	:	20000 h	20000 h	Lubricant amount	:	27 g	13 g	Lubricant type	:	Mobil Polyrex EM	
		<u>Drive end</u>	<u>Non drive end</u>																										
Bearing type	:	6314 C3	6212 Z C3																										
Sealing	:	Without Bearing Seal	Without Bearing Seal																										
Lubrication interval	:	20000 h	20000 h																										
Lubricant amount	:	27 g	13 g																										
Lubricant type	:	Mobil Polyrex EM																											
Notes																													
This revision replaces and cancel the previous one, which must be eliminated. (1) Looking the motor from the shaft end. (2) Measured at 1m and with tolerance of +3dB(A). (3) Approximate weight subject to changes after manufacturing process. (4) At 100% of full load.			These are average values based on tests with sinusoidal power supply, subject to the tolerances stipulated in NEMA MG-1.																										
Rev.	Changes Summary			Performed	Checked																								
Performed by																													
Checked by				Page	Revision																								
Date	10/04/2020			1 / 6																									

# TORQUE AND CURRENT VS SPEED CURVE

Three Phase Induction Motor - Squirrel Cage



Customer :

Product line

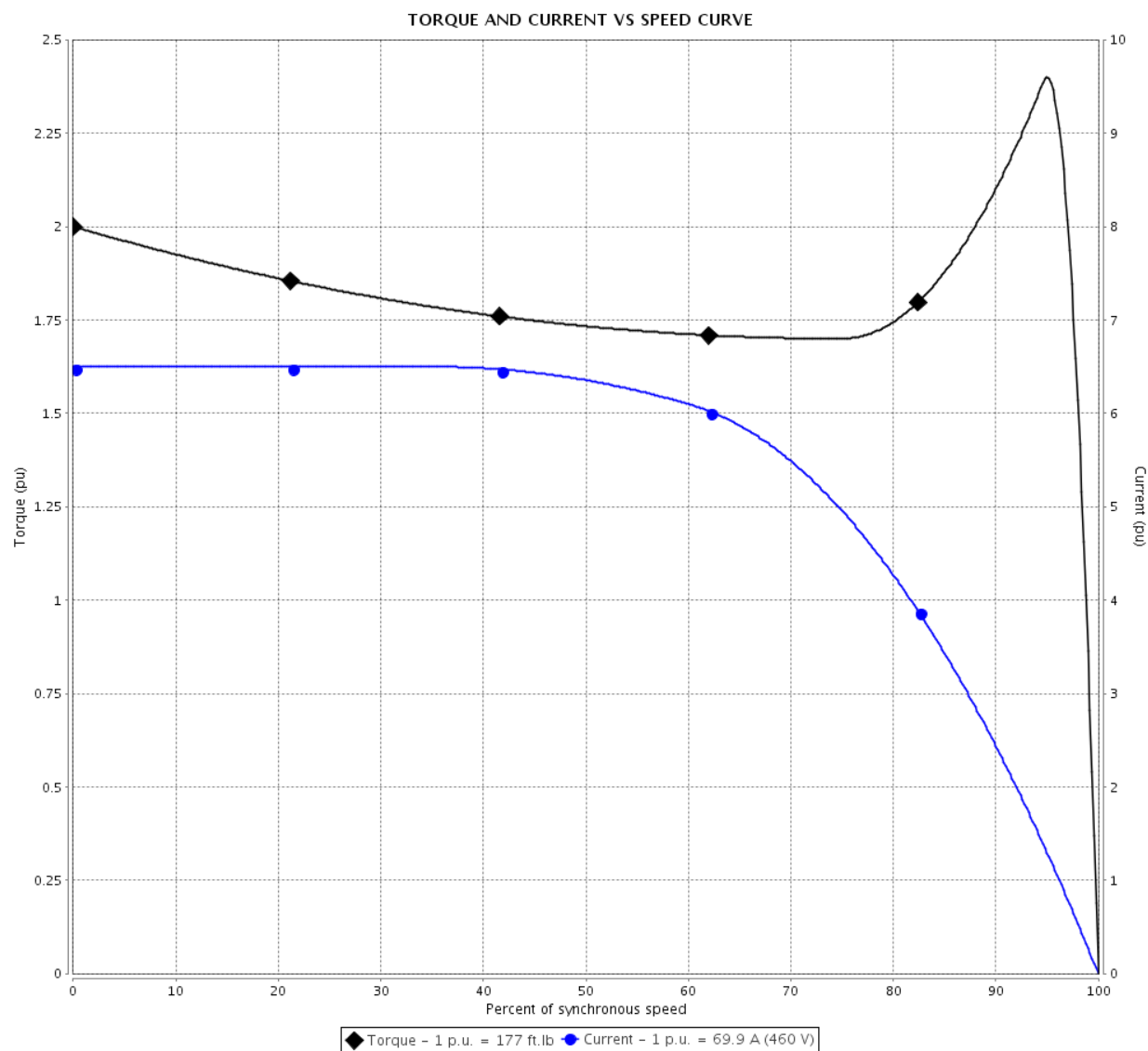
: W40 NEMA Premium Efficiency  
Three-Phase

Product code :

14270886

Catalog # :

06018OT3G364T-W40



Performance : 460 V 60 Hz 4P

Rated current : 69.9 A  
LRC : 6.5  
Rated torque : 177 ft.lb  
Locked rotor torque : 200 %  
Breakdown torque : 240 %  
Rated speed : 1780 rpm

Moment of inertia (J) : 15.6 sq.ft.lb  
Duty cycle : Cont.(S1)  
Insulation class : F  
Service factor : 1.25  
Temperature rise : 80 K  
Design : B

Locked rotor time : 34s (cold) 19s (hot)

Rev.	Changes Summary	Performed	Checked	Date
Performed by		<div>Page</div> <div>2 / 6</div> <div>Revision</div>		
Checked by				
Date	10/04/2020			

# LOAD PERFORMANCE CURVE

## Three Phase Induction Motor - Squirrel Cage

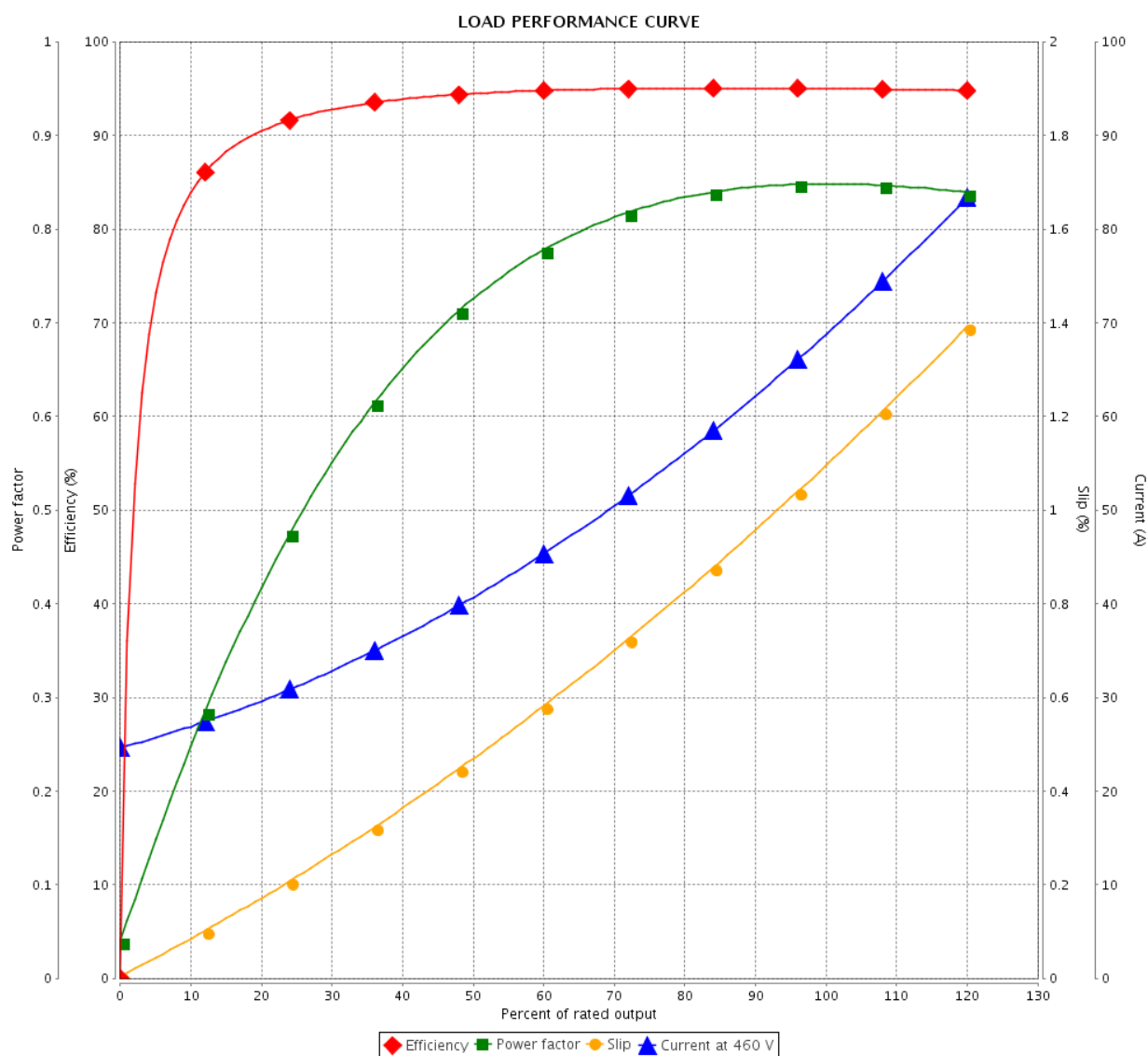


Customer :

Product line : W40 NEMA Premium Efficiency  
Three-Phase

Product code : 14270886

Catalog # : 06018OT3G364T-W40



Performance : 460 V 60 Hz 4P

Rated current	: 69.9 A	Moment of inertia (J)	: 15.6 sq.ft.lb
LRC	: 6.5	Duty cycle	: Cont.(S1)
Rated torque	: 177 ft.lb	Insulation class	: F
Locked rotor torque	: 200 %	Service factor	: 1.25
Breakdown torque	: 240 %	Temperature rise	: 80 K
Rated speed	: 1780 rpm	Design	: B

Rev.	Changes Summary	Performed	Checked	Date
Performed by		Page 3 / 6		
Checked by				
Date	10/04/2020			
		Revision		

# THERMAL LIMIT CURVE

## Three Phase Induction Motor - Squirrel Cage



Customer

:

Product line

: W40 NEMA Premium Efficiency  
Three-Phase

Product code :

14270886

Catalog # :

06018OT3G364T-W40

Performance : 460 V 60 Hz 4P

Rated current

: 69.9 A

LRC

: 6.5

Rated torque

: 177 ft.lb

Locked rotor torque

: 200 %

Breakdown torque

: 240 %

Rated speed

: 1780 rpm

Moment of inertia (J)

: 15.6 sq.ft.lb

Duty cycle

: Cont.(S1)

Insulation class

: F

Service factor

: 1.25

Temperature rise

: 80 K

Design

: B

Heating constant

Cooling constant

Rev.

Changes Summary

Performed

Checked

Date

Performed by

Checked by

Date

10/04/2020

Page

4 / 6

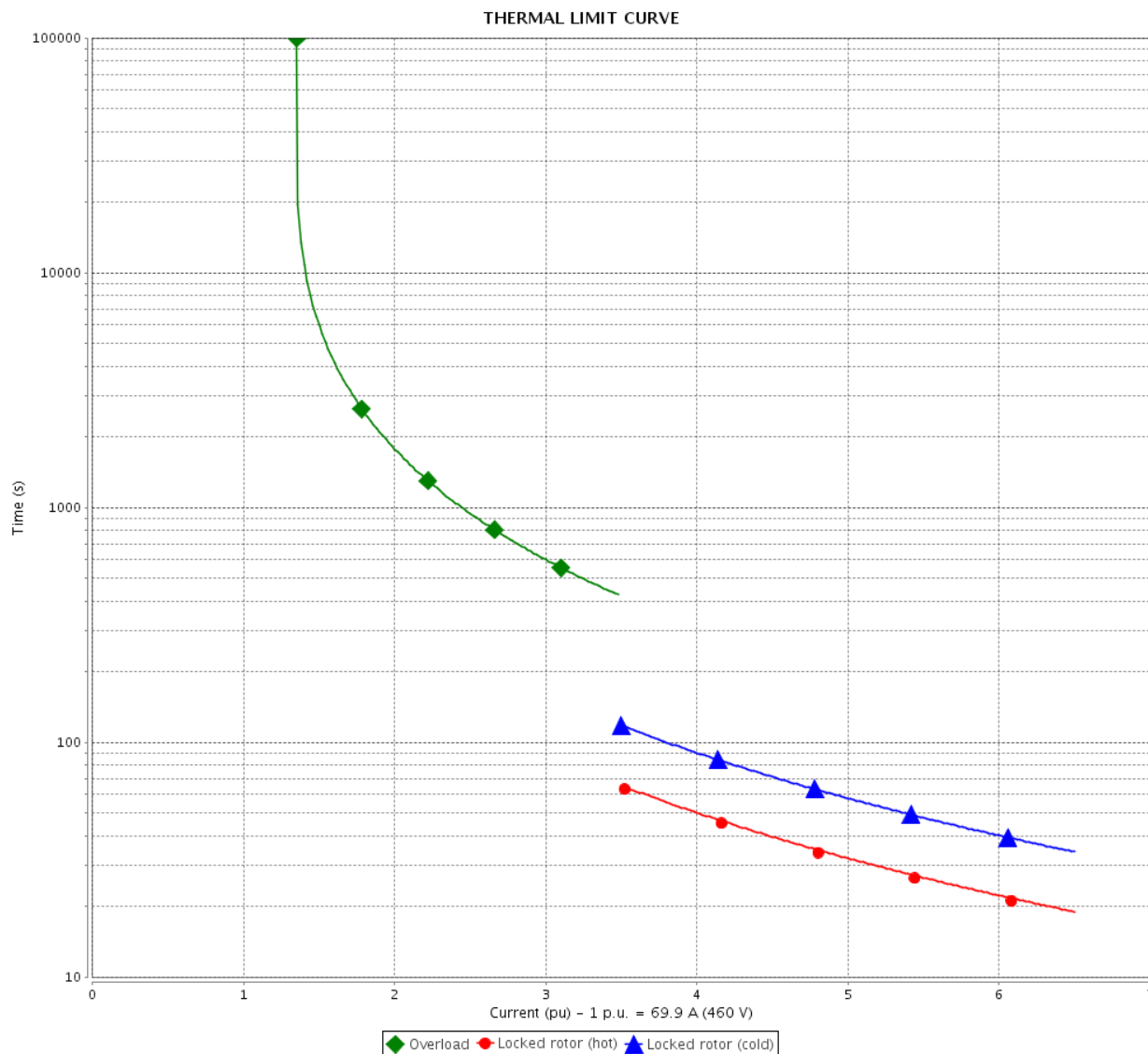
Revision

# THERMAL LIMIT CURVE

Three Phase Induction Motor - Squirrel Cage



Customer : \_\_\_\_\_



Rev.	Changes Summary		Performed	Checked	Date
Performed by				Page 5 / 6	Revision
Checked by					
Date	10/04/2020				

# VFD OPERATION CURVE

Three Phase Induction Motor - Squirrel Cage

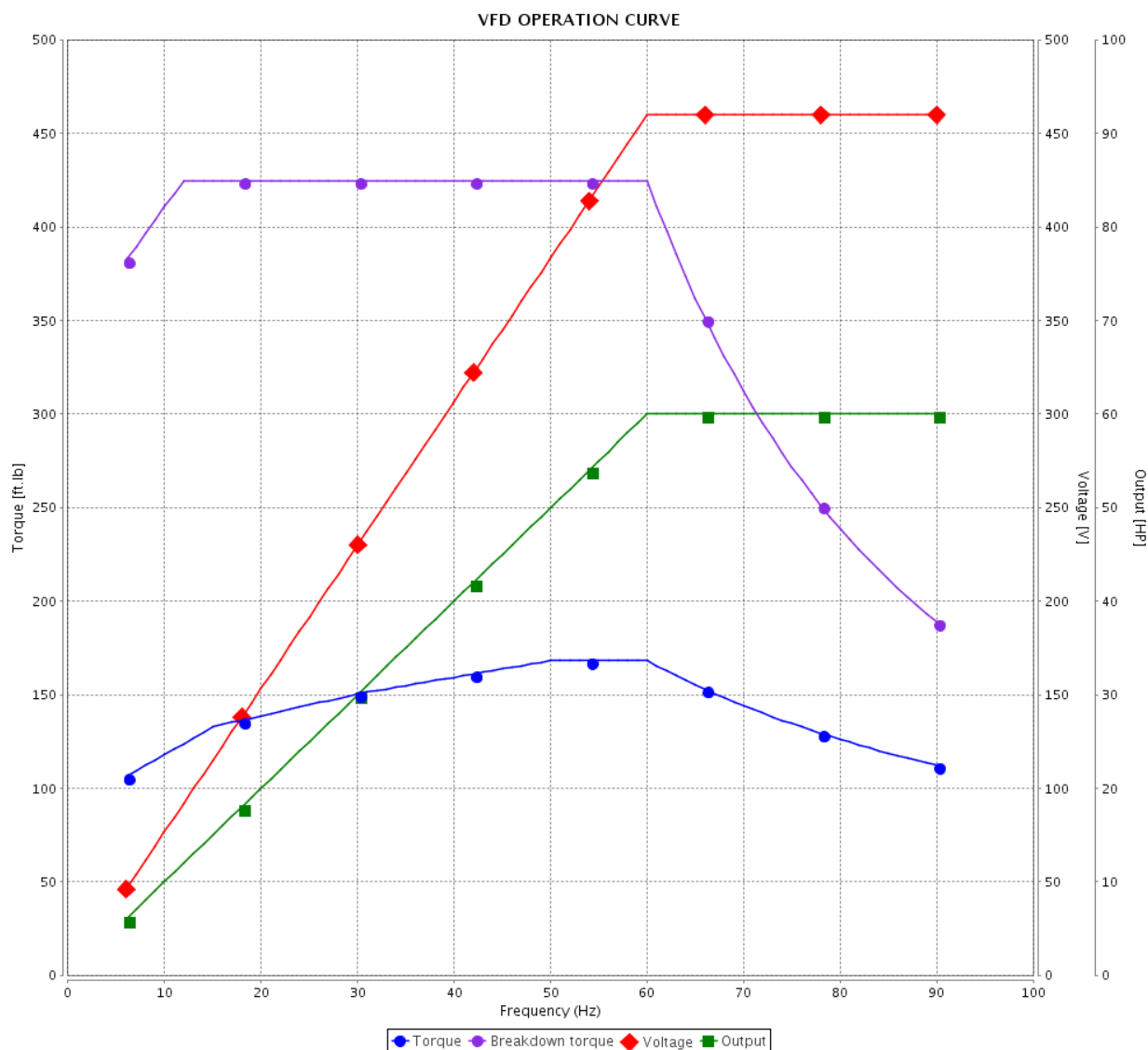


Customer :

Product line : W40 NEMA Premium Efficiency  
Three-Phase

Product code : 14270886

Catalog # : 06018OT3G364T-W40

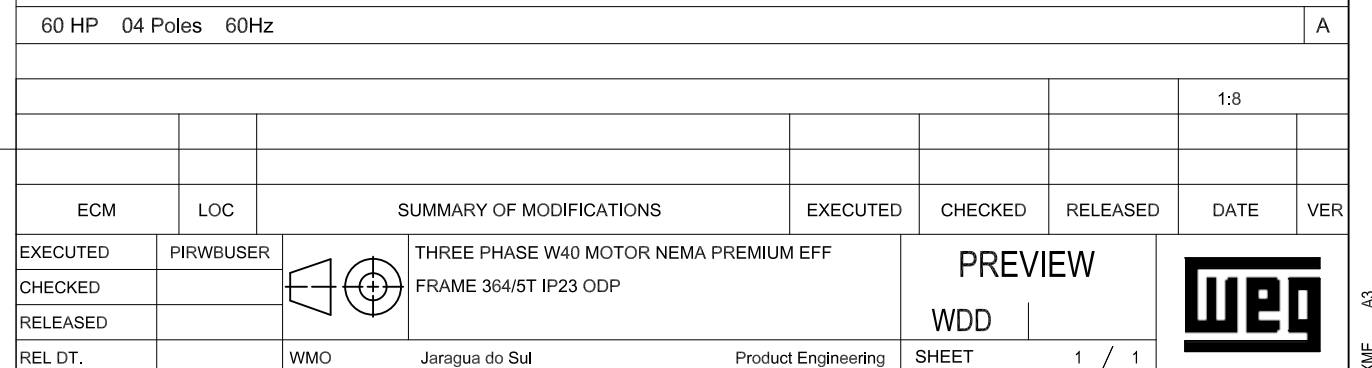
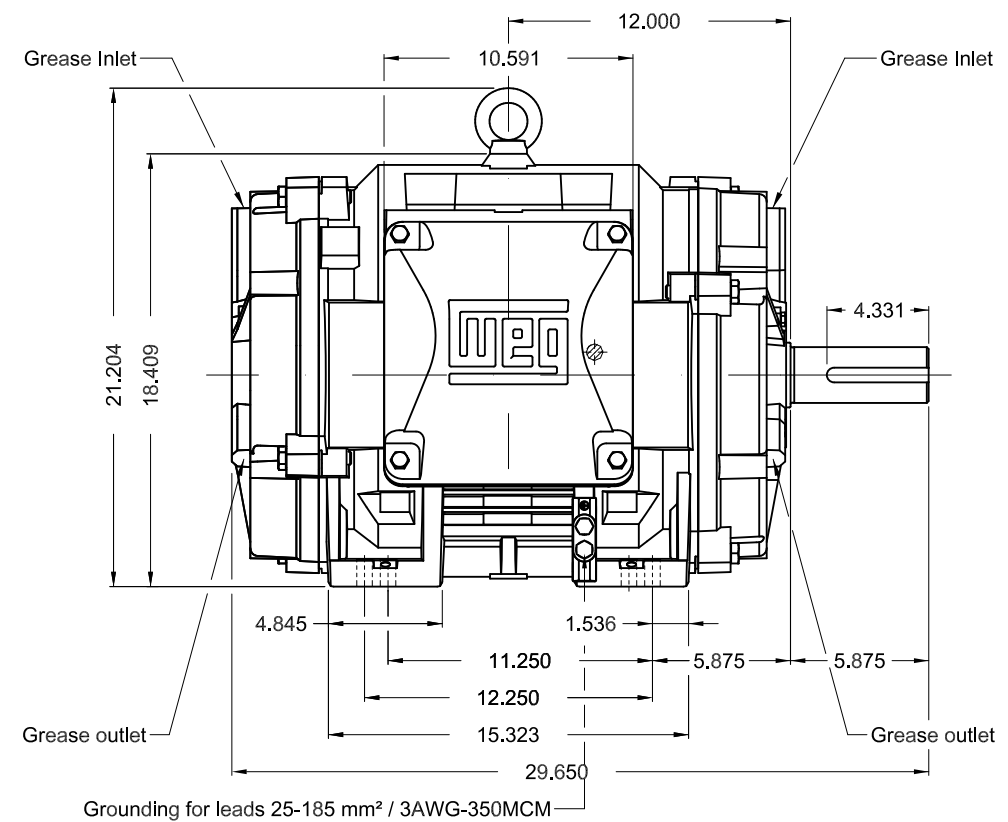


Performance : 460 V 60 Hz 4P

Rated current : 69.9 A  
LRC : 6.5  
Rated torque : 177 ft.lb  
Locked rotor torque : 200 %  
Breakdown torque : 240 %  
Rated speed : 1780 rpm

Moment of inertia (J) : 15.6 sq.ft.lb  
Duty cycle : Cont.(S1)  
Insulation class : F  
Service factor : 1.25  
Temperature rise : 80 K  
Design : B

Rev.	Changes Summary		Performed	Checked	Date
Performed by				Page 6 / 6Revision	
Checked by					
Date	10/04/2020				



WEG's property. Forbidden reproduction without previous authorization.