

DATA SHEET

Three Phase Induction Motor - Squirrel Cage



Customer :

Product line : W40 JP Pump NEMA Premium Efficiency Three-Phase Product code : 14490084
Catalog # : 05018OT3H326JP-W40

Frame	: 324/6JP	Locked rotor time	: 19s (cold) 11s (hot)
Output	: 50 HP (37 kW)	Temperature rise	: 80 K
Poles	: 4	Duty cycle	: Cont.(S1)
Frequency	: 60 Hz	Ambient temperature	: -20°C to +40°C
Rated voltage	: 575 V	Altitude	: 1000 m.a.s.l.
Rated current	: 46.8 A	Protection degree	: IP23
L. R. Amperes	: 295 A	Cooling method	: IC01 - ODP
LRC	: 6.3x(Code G)	Mounting	: F-1
No load current	: 18.6 A	Rotation ¹	: Both (CW and CCW)
Rated speed	: 1775 rpm	Noise level ²	: 66.0 dB(A)
Slip	: 1.39 %	Starting method	: Direct On Line
Rated torque	: 148 ft.lb	Approx. weight ³	: 600 lb
Locked rotor torque	: 240 %		
Breakdown torque	: 240 %		
Insulation class	: F		
Service factor	: 1.25		
Moment of inertia (J)	: 7.08 sq.ft.lb		
Design	: B		

Output	25%	50%	75%	100%	Foundation loads
Efficiency (%)	94.0	94.1	94.5	94.5	Max. traction
Power Factor	0.44	0.70	0.80	0.84	Max. compression

		<u>Drive end</u>	<u>Non drive end</u>
Bearing type	:	6312 Z C3	6211 Z C3
Sealing	:	Without Bearing Seal	Without Bearing Seal
Lubrication interval	:	20000 h	20000 h
Lubricant amount	:	21 g	11 g
Lubricant type	:	Mobil Polyrex EM	

Notes

This revision replaces and cancel the previous one, which must be eliminated.

- (1) Looking the motor from the shaft end.
- (2) Measured at 1m and with tolerance of +3dB(A).
- (3) Approximate weight subject to changes after manufacturing process.
- (4) At 100% of full load.

These are average values based on tests with sinusoidal power supply, subject to the tolerances stipulated in NEMA MG-1.

Rev.	Changes Summary	Performed	Checked	Date
Performed by		Page 1 / 6		
Checked by				
Date	10/04/2020			
			Revision	

TORQUE AND CURRENT VS SPEED CURVE

Three Phase Induction Motor - Squirrel Cage



Customer :

Product line

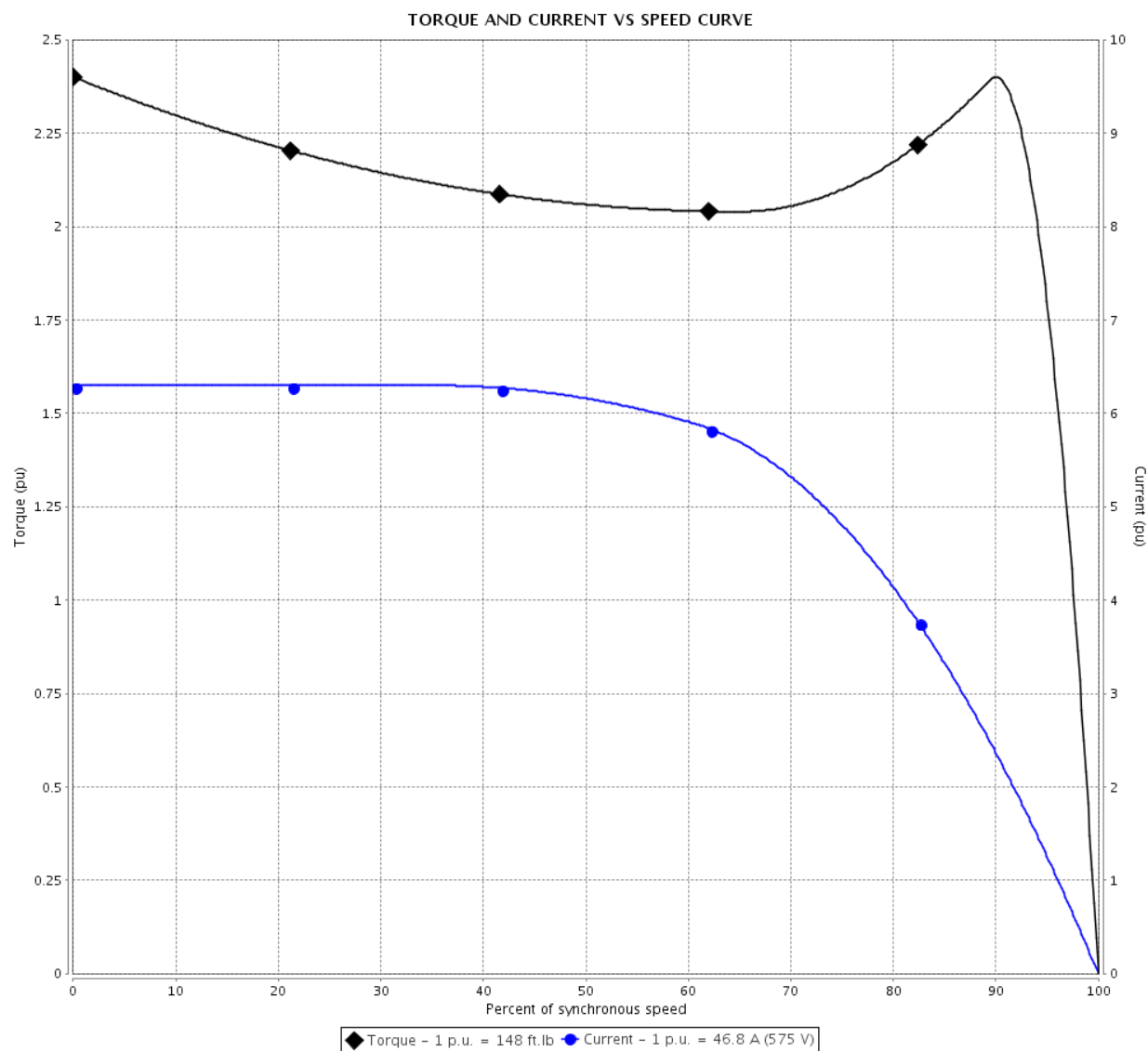
: W40 JP Pump NEMA Premium
Efficiency Three-Phase

Product code :

14490084

Catalog # :

05018OT3H326JP-W40



Performance : 575 V 60 Hz 4P

Rated current : 46.8 A
LRC : 6.3
Rated torque : 148 ft.lb
Locked rotor torque : 240 %
Breakdown torque : 240 %
Rated speed : 1775 rpm

Moment of inertia (J) : 7.08 sq.ft.lb
Duty cycle : Cont.(S1)
Insulation class : F
Service factor : 1.25
Temperature rise : 80 K
Design : B

Locked rotor time : 19s (cold) 11s (hot)

Rev.	Changes Summary	Performed	Checked	Date
Performed by		<div>Page</div> <div>2 / 6</div> <div>Revision</div>		
Checked by				
Date	10/04/2020			

LOAD PERFORMANCE CURVE

Three Phase Induction Motor - Squirrel Cage

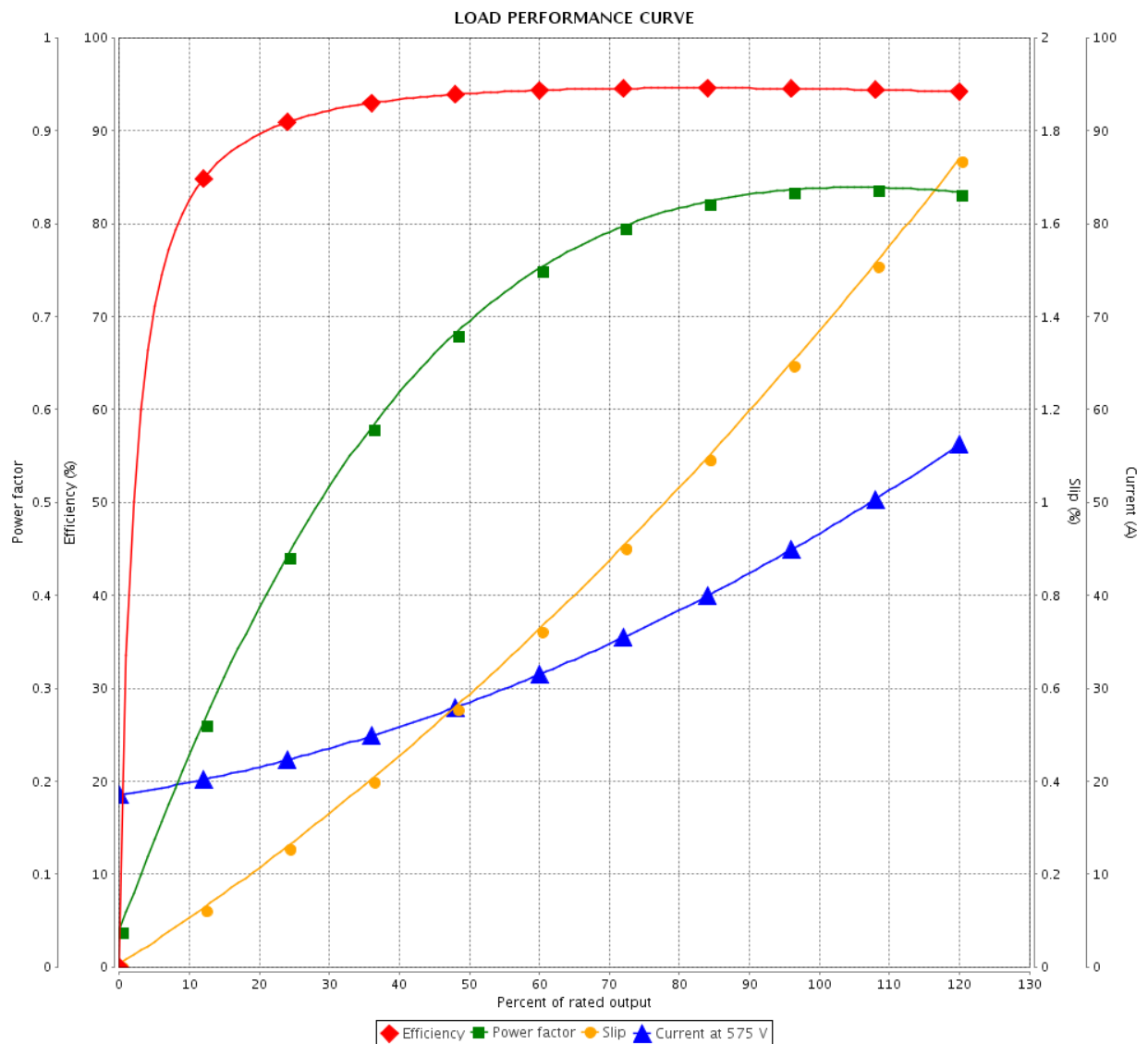


Customer :

Product line : W40 JP Pump NEMA Premium
Efficiency Three-Phase

Product code : 14490084

Catalog # : 05018OT3H326JP-W40



Performance : 575 V 60 Hz 4P

Rated current : 46.8 A
LRC : 6.3
Rated torque : 148 ft.lb
Locked rotor torque : 240 %
Breakdown torque : 240 %
Rated speed : 1775 rpm

Moment of inertia (J) : 7.08 sq.ft.lb
Duty cycle : Cont.(S1)
Insulation class : F
Service factor : 1.25
Temperature rise : 80 K
Design : B

Rev.	Changes Summary	Performed	Checked	Date
Performed by				
Checked by				
Date	10/04/2020			

Page 3 / 6
Revision

THERMAL LIMIT CURVE

Three Phase Induction Motor - Squirrel Cage



Customer

:

Product line

: W40 JP Pump NEMA Premium
Efficiency Three-Phase

Product code :

14490084

Catalog # :

05018OT3H326JP-W40

Performance : 575 V 60 Hz 4P

Rated current

: 46.8 A

LRC

: 6.3

Rated torque

: 148 ft.lb

Locked rotor torque

: 240 %

Breakdown torque

: 240 %

Rated speed

: 1775 rpm

Moment of inertia (J)

: 7.08 sq.ft.lb

Duty cycle

: Cont.(S1)

Insulation class

: F

Service factor

: 1.25

Temperature rise

: 80 K

Design

: B

Heating constant

Cooling constant

Rev.

Changes Summary

Performed

Checked

Date

Performed by

Checked by

Date

10/04/2020

Page

4 / 6

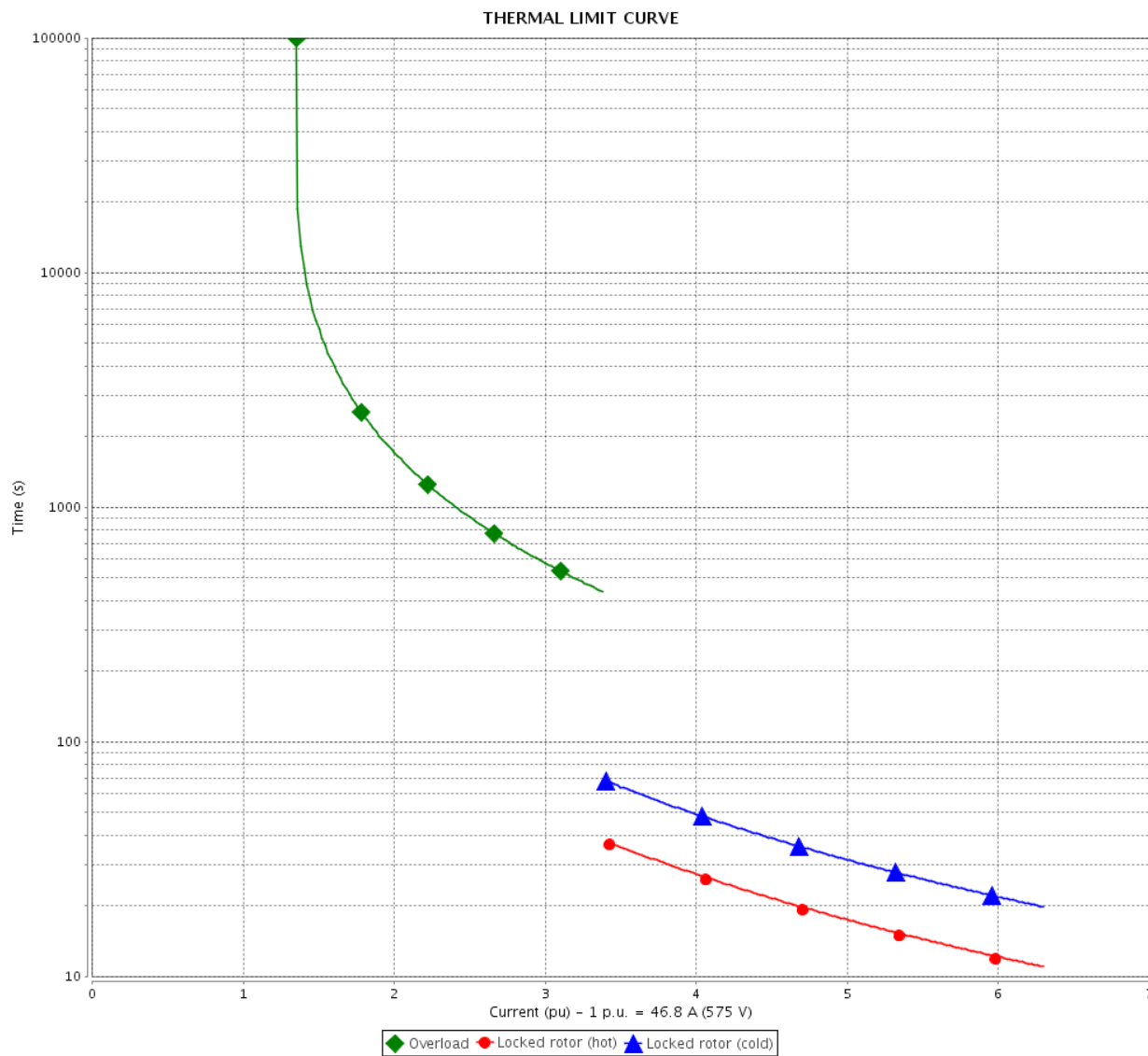
Revision

THERMAL LIMIT CURVE

Three Phase Induction Motor - Squirrel Cage



Customer : _____



Rev.	Changes Summary		Performed	Checked	Date
Performed by				Page 5 / 6	Revision
Checked by					
Date	10/04/2020				

VFD OPERATION CURVE

Three Phase Induction Motor - Squirrel Cage

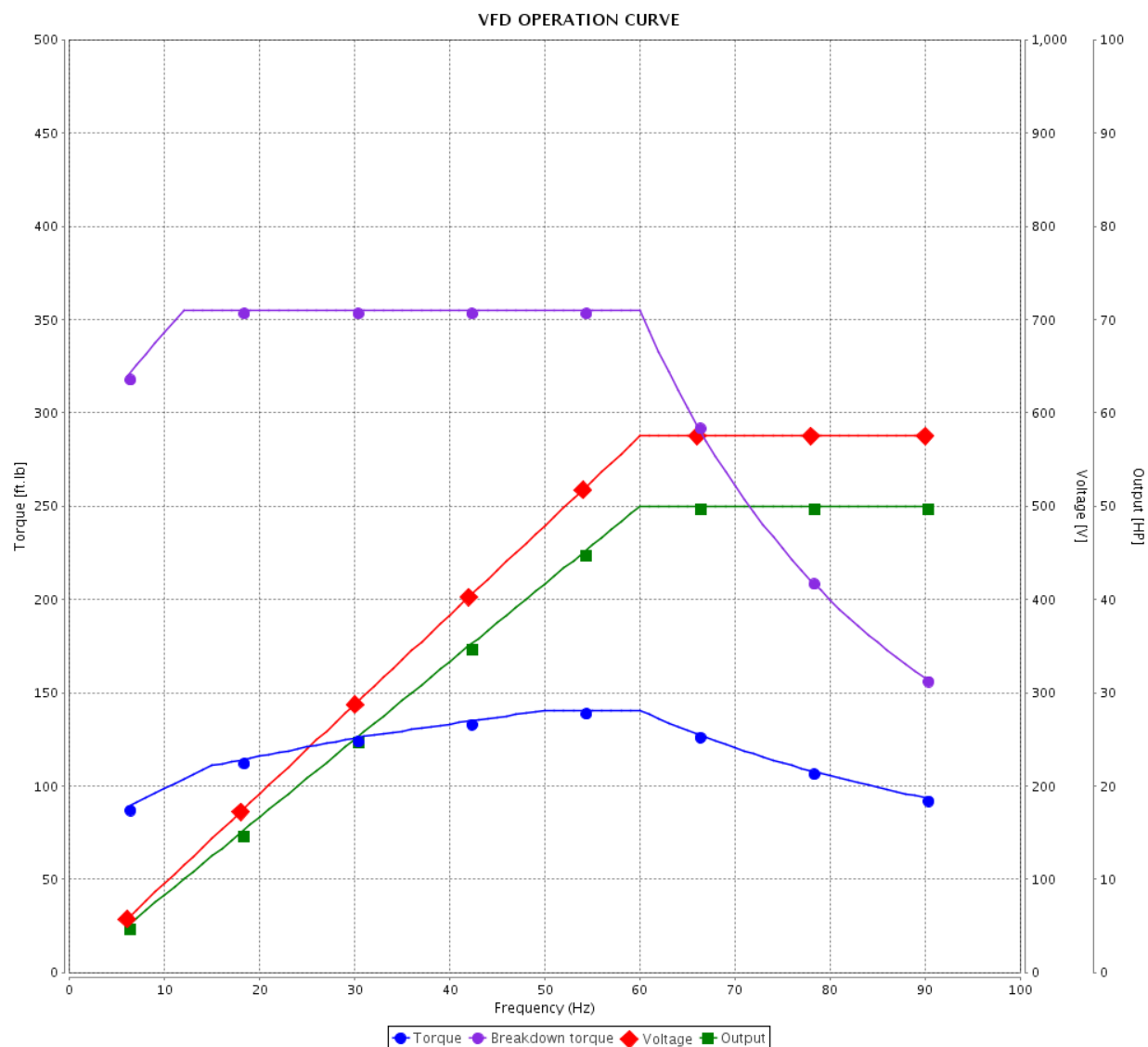


Customer :

Product line : W40 JP Pump NEMA Premium
Efficiency Three-Phase

Product code : 14490084

Catalog # : 05018OT3H326JP-W40

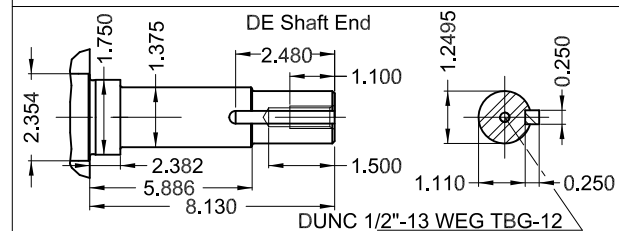
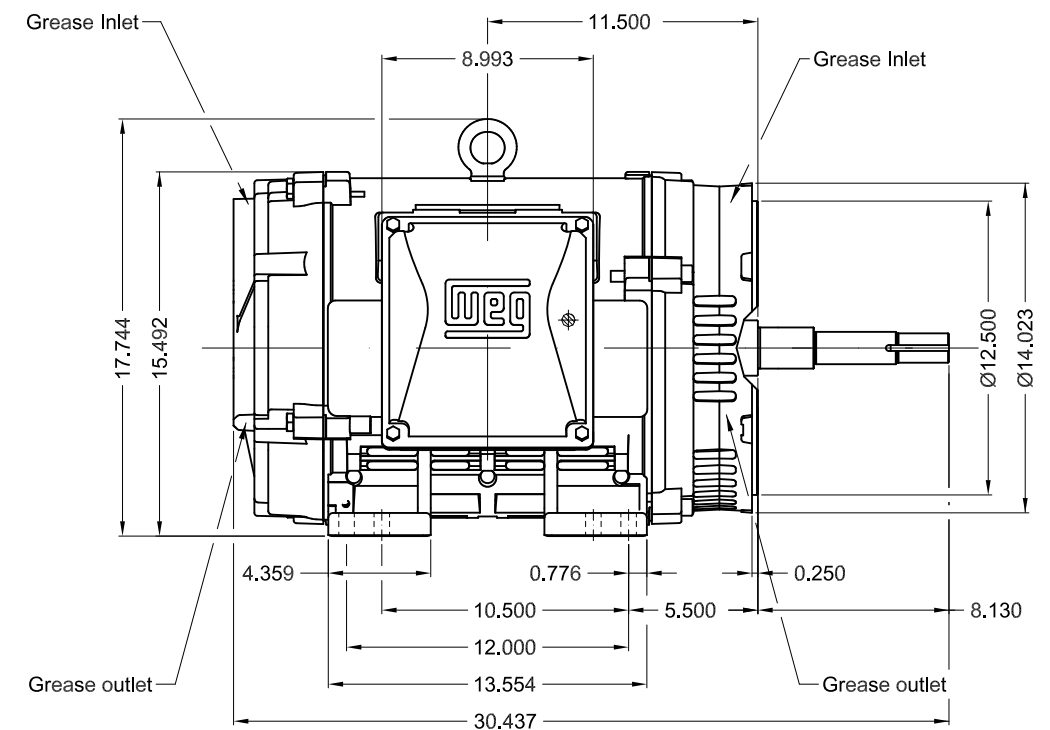
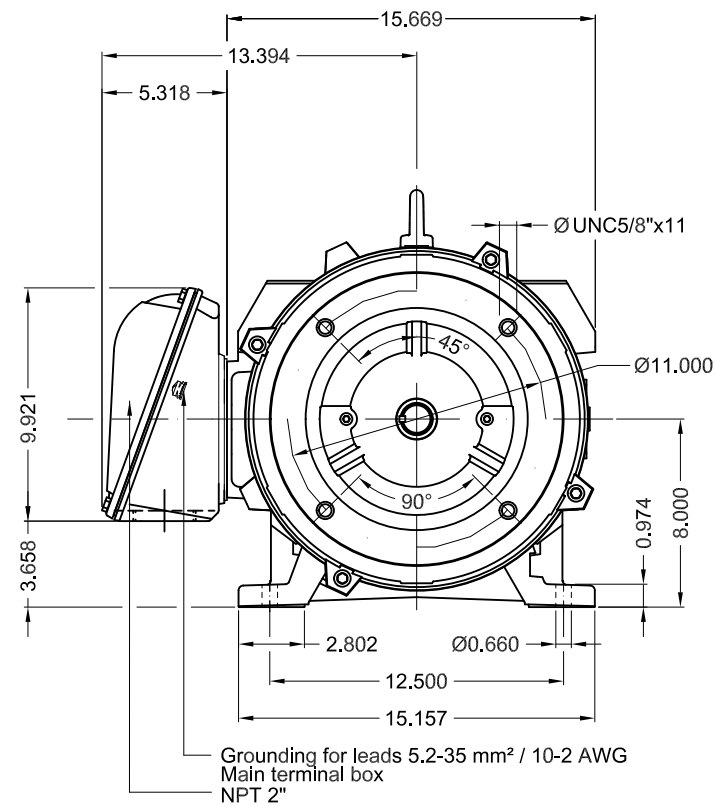




Performance : 575 V 60 Hz 4P

Rated current : 46.8 A
LRC : 6.3
Rated torque : 148 ft.lb
Locked rotor torque : 240 %
Breakdown torque : 240 %
Rated speed : 1775 rpm

Moment of inertia (J) : 7.08 sq.ft.lb
Duty cycle : Cont.(S1)
Insulation class : F
Service factor : 1.25
Temperature rise : 80 K
Design : B

Rev.	Changes Summary	Performed	Checked	Date
Performed by		Page 6 / 6Revision		
Checked by				
Date	10/04/2020			



50 HP 04 Poles 60Hz										A							
										1:8							
ECM		LOC		SUMMARY OF MODIFICATIONS				EXECUTED		CHECKED		RELEASED		DATE		VER	
EXECUTED		PIRWBUSER				THREE PHASE W40 MOTOR NEMA PREMIUM EFF FRAME 324/6JP IP23 ODP				PREVIEW WDD							
CHECKED																	
RELEASED																	
REL DT.				WMO		Jaragua do Sul		Product Engineering		SHEET		1 / 1					