

# DATA SHEET

## Three Phase Induction Motor - Squirrel Cage



Customer :				
Product line		: Rolled Steel NEMA Premium Efficiency Three-Phase		Product code : 14593691
				Catalog # : 00318ET3EBMR182TC-S
Frame : 182/4TC Output : 3 HP (2.2 kW) Poles : 4 Frequency : 60 Hz Rated voltage : 230/460 V Rated current : 7.62/3.81 A L. R. Amperes : 67.1/33.5 A LRC : 8.8x(Code K) No load current : 4.00/2.00 A Rated speed : 1765 rpm Slip : 1.94 % Rated torque : 8.93 ft.lb Locked rotor torque : 220 % Breakdown torque : 300 % Insulation class : F Service factor : 1.15 Moment of inertia (J) : 0.4017 sq.ft.lb Design : B		Locked rotor time : 32s (cold) 18s (hot) Temperature rise : 80 K Duty cycle : Cont.(S1) Ambient temperature : -20°C to +40°C Altitude : 1000 m.a.s.l. Protection degree : IP55 Cooling method : IC411 - TEFC Mounting : F-1 Rotation <sup>1</sup> : Both (CW and CCW) Noise level <sup>2</sup> : 56.0 dB(A) Starting method : Direct On Line Approx. weight <sup>3</sup> : 103 lb		
Output	50%	75%	100%	Foundation loads
Efficiency (%)	87.5	88.5	89.5	Max. traction : 168 lb
Power Factor	0.61	0.74	0.81	Max. compression : 271 lb
		<u>Drive end</u>	<u>Non drive end</u>	
Bearing type	:	6206 ZZ	6205 ZZ	
Sealing	:	V'Ring	V'Ring	
Lubrication interval	:	-	-	
Lubricant amount	:	-	-	
Lubricant type	:	Mobil Polyrex EM		
Notes USABLE @208V 8.43A SF 1.00 SFA 8.43A				
This revision replaces and cancel the previous one, which must be eliminated. (1) Looking the motor from the shaft end. (2) Measured at 1m and with tolerance of +3dB(A). (3) Approximate weight subject to changes after manufacturing process. (4) At 100% of full load.			These are average values based on tests with sinusoidal power supply, subject to the tolerances stipulated in NEMA MG-1.	
Rev.	Changes Summary		Performed	Checked
Performed by				
Checked by			Page	Revision
Date	10/04/2020		1 / 7	

# DATA SHEET

## Three Phase Induction Motor - Squirrel Cage



Customer : \_\_\_\_\_

### Brake information

Voltage: 208-230/460//190/380 V  
Brake Torque: 14.8 ft.lb

Rev.	Changes Summary		Performed	Checked	Date
Performed by			Page 2 / 7		Revision
Checked by					
Date	10/04/2020				

# TORQUE AND CURRENT VS SPEED CURVE

## Three Phase Induction Motor - Squirrel Cage

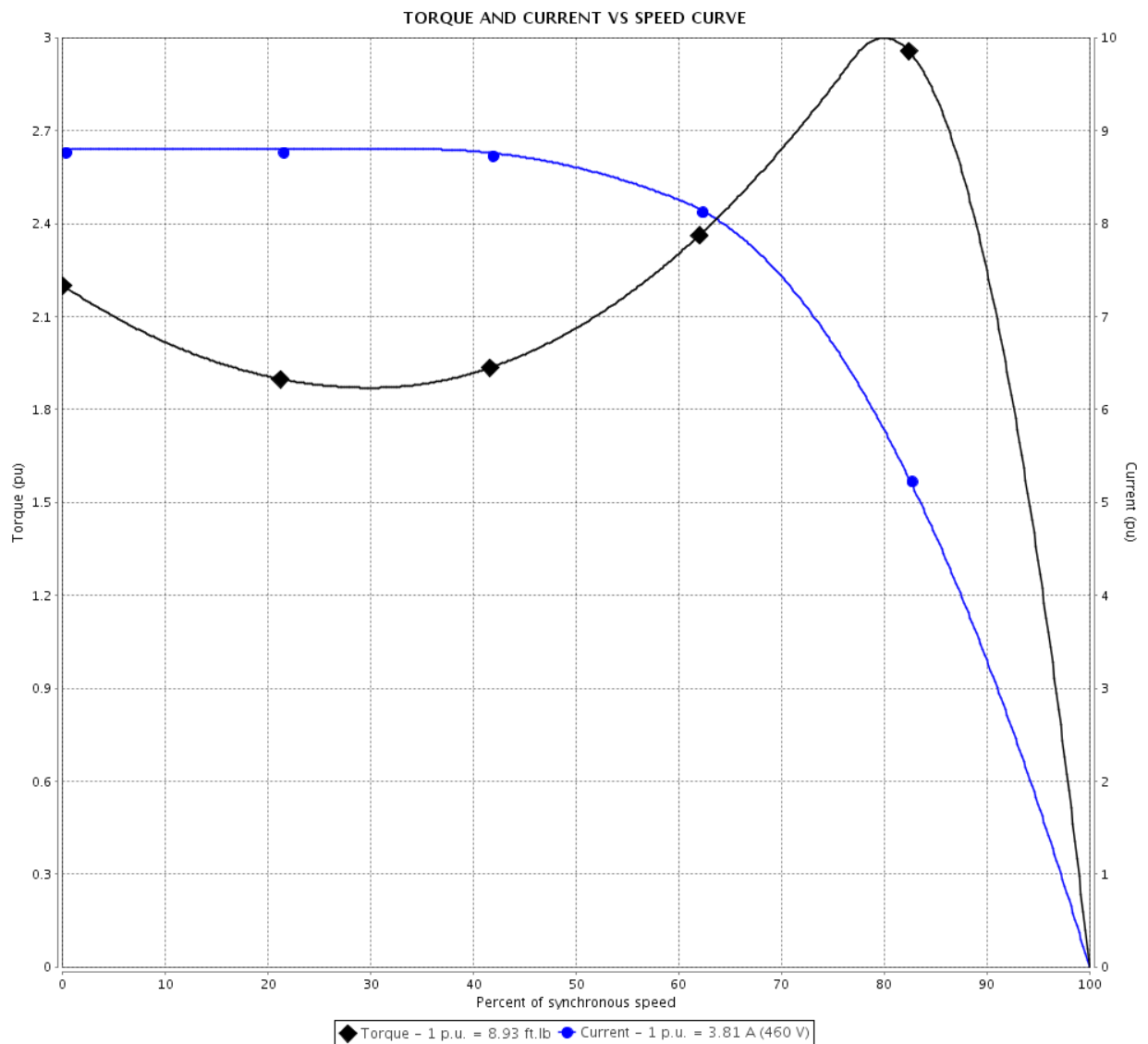


Customer :

Product line : Rolled Steel NEMA Premium  
Efficiency Three-Phase

Product code : 14593691

Catalog # : 00318ET3EBMR182TC-S



Performance : 230/460 V 60 Hz 4P

Rated current : 7.62/3.81 A  
LRC : 8.8  
Rated torque : 8.93 ft.lb  
Locked rotor torque : 220 %  
Breakdown torque : 300 %  
Rated speed : 1765 rpm

Moment of inertia (J) : 0.4017 sq.ft.lb  
Duty cycle : Cont.(S1)  
Insulation class : F  
Service factor : 1.15  
Temperature rise : 80 K  
Design : B

Locked rotor time : 32s (cold) 18s (hot)

Rev.	Changes Summary	Performed	Checked	Date
Performed by		Page 3 / 7      Revision		
Checked by				
Date	10/04/2020			

# LOAD PERFORMANCE CURVE

## Three Phase Induction Motor - Squirrel Cage

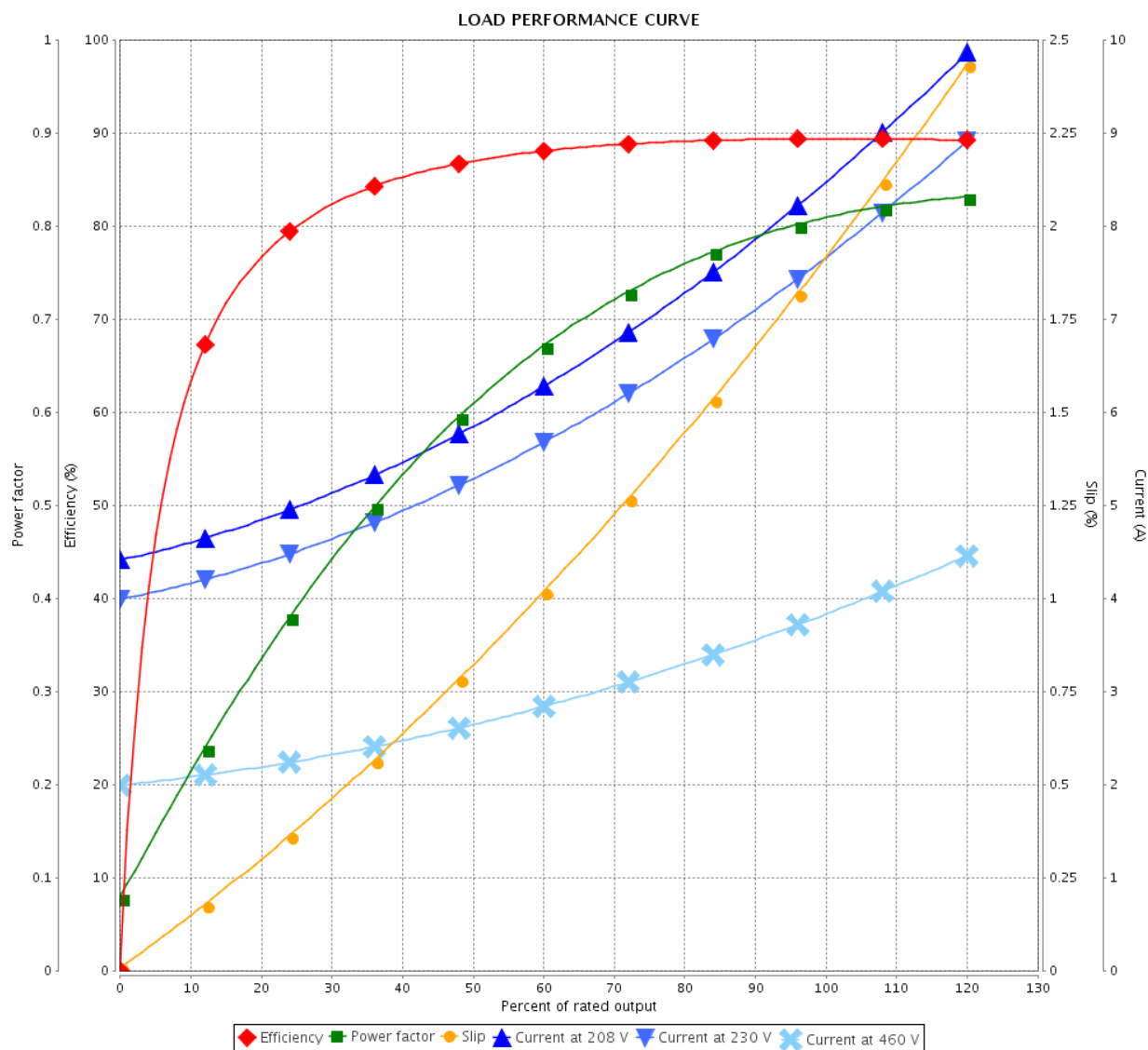


Customer :

Product line : Rolled Steel NEMA Premium  
Efficiency Three-Phase

Product code : 14593691

Catalog # : 00318ET3EBMR182TC-S



Performance : 230/460 V 60 Hz 4P

Rated current : 7.62/3.81 A  
LRC : 8.8  
Rated torque : 8.93 ft.lb  
Locked rotor torque : 220 %  
Breakdown torque : 300 %  
Rated speed : 1765 rpm

Moment of inertia (J) : 0.4017 sq.ft.lb  
Duty cycle : Cont.(S1)  
Insulation class : F  
Service factor : 1.15  
Temperature rise : 80 K  
Design : B

Rev.	Changes Summary		Performed	Checked	Date
Performed by				Page	Revision
Checked by				4 / 7	
Date					

# THERMAL LIMIT CURVE

## Three Phase Induction Motor - Squirrel Cage



Customer :

Product line : Rolled Steel NEMA Premium  
Efficiency Three-Phase

Product code : 14593691

Catalog # : 00318ET3EBMR182TC-S

Performance : 230/460 V 60 Hz 4P

Rated current : 7.62/3.81 A  
LRC : 8.8  
Rated torque : 8.93 ft.lb  
Locked rotor torque : 220 %  
Breakdown torque : 300 %  
Rated speed : 1765 rpm

Moment of inertia (J) : 0.4017 sq.ft.lb  
Duty cycle : Cont.(S1)  
Insulation class : F  
Service factor : 1.15  
Temperature rise : 80 K  
Design : B

Heating constant

Cooling constant

Rev.	Changes Summary	Performed	Checked	Date
Performed by		Page 5 / 7		Revision
Checked by				
Date	10/04/2020			

This document is exclusive property of WEG S/A. Reprinting is not allowed without written authorization of WEG S/A.

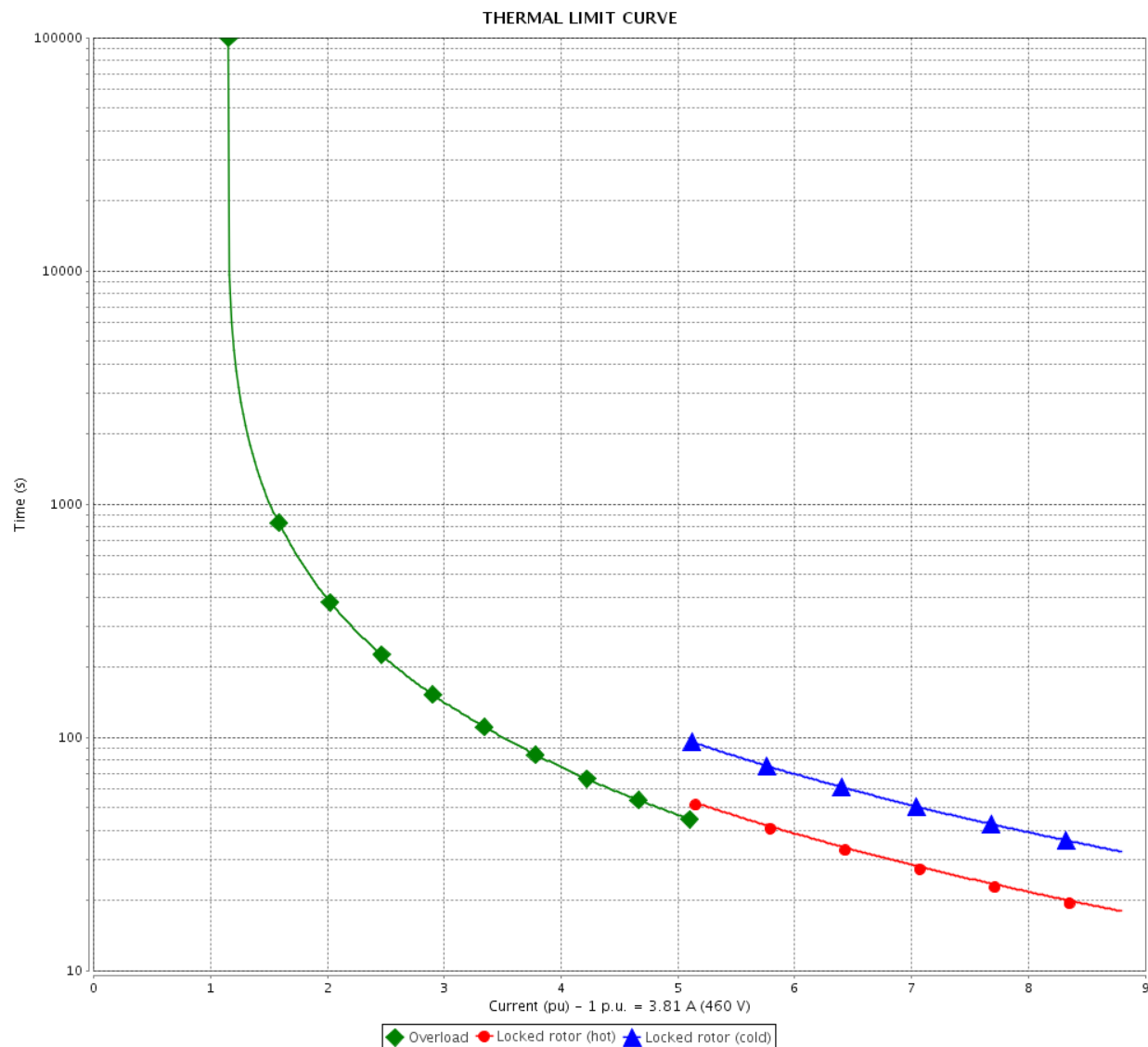
Subject to change without notice

# THERMAL LIMIT CURVE

Three Phase Induction Motor - Squirrel Cage



Customer :



Rev.	Changes Summary		Performed	Checked	Date
Performed by			Page 6 / 7		Revision
Checked by					
Date	10/04/2020				

# VFD OPERATION CURVE

Three Phase Induction Motor - Squirrel Cage

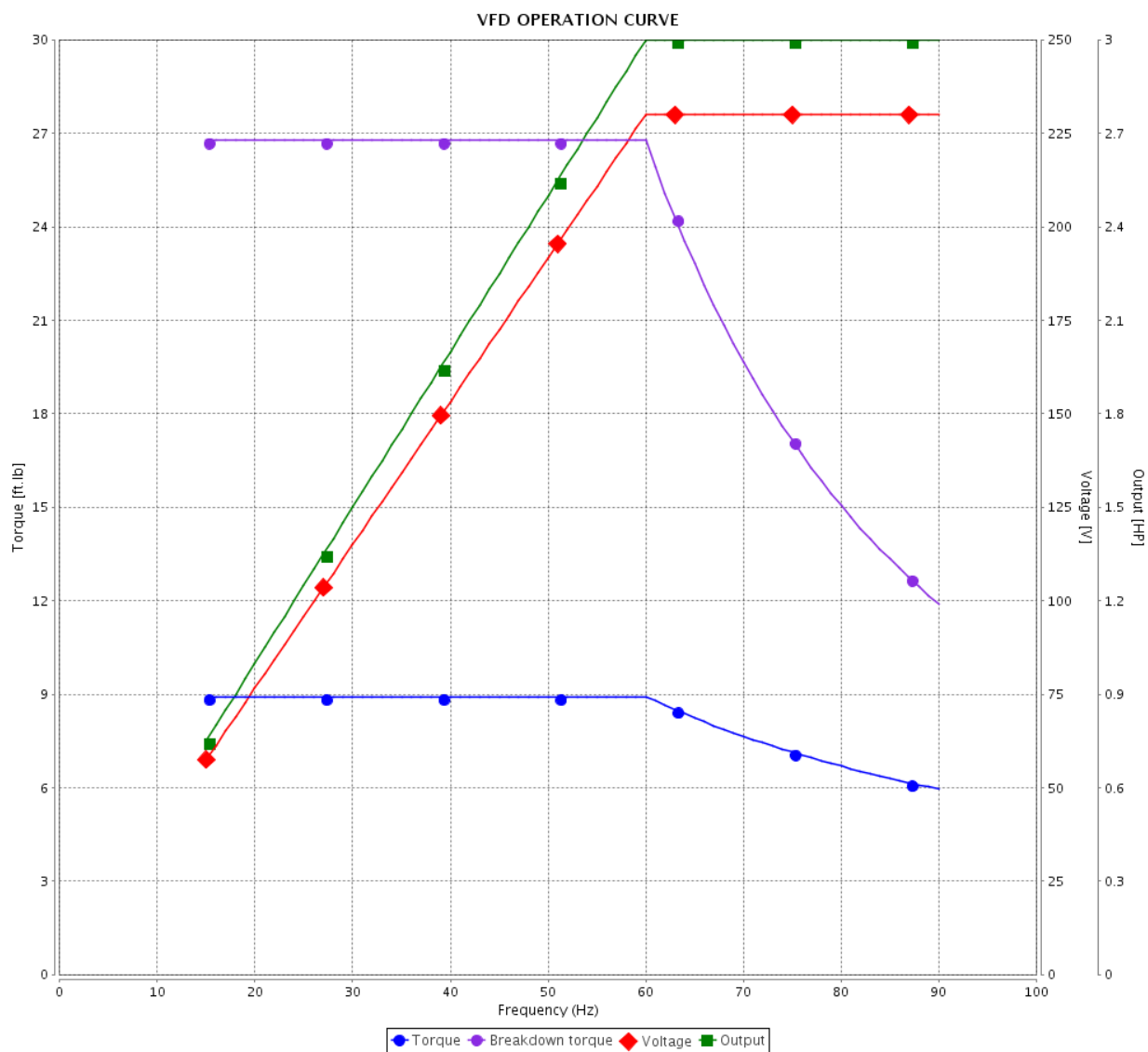


Customer :

Product line : Rolled Steel NEMA Premium  
Efficiency Three-Phase

Product code : 14593691

Catalog # : 00318ET3EBMR182TC-S



Performance : 230/460 V 60 Hz 4P

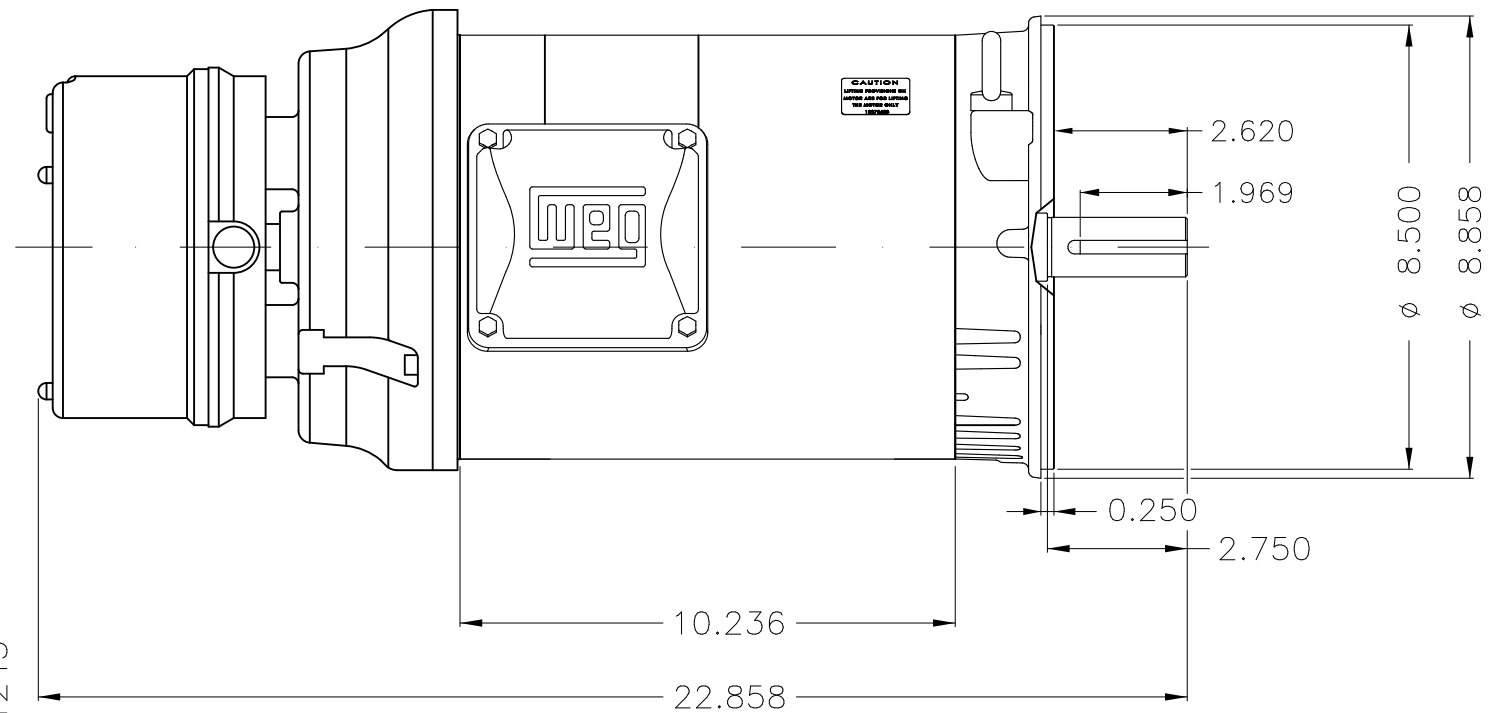
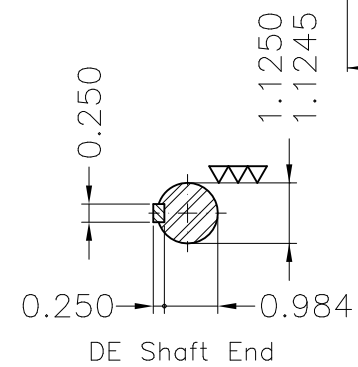
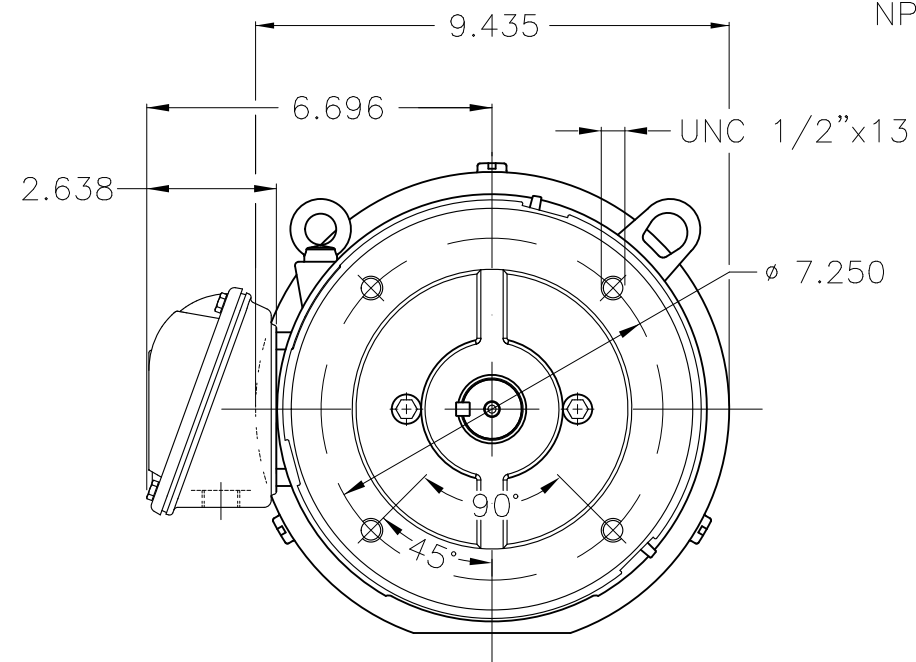
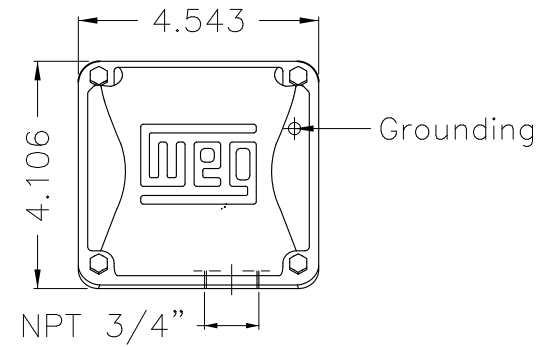
Rated current : 7.62/3.81 A  
LRC : 8.8  
Rated torque : 8.93 ft.lb  
Locked rotor torque : 220 %  
Breakdown torque : 300 %  
Rated speed : 1765 rpm

Moment of inertia (J) : 0.4017 sq.ft.lb  
Duty cycle : Cont.(S1)  
Insulation class : F  
Service factor : 1.15  
Temperature rise : 80 K  
Design : B

Rev.	Changes Summary	Performed	Checked	Date
Performed by		Page 7 / 7		
Checked by				
Date	10/04/2020			
		Revision		

Dimensões em polegada  
Dimensions in inches



THIS IS AN UPDATED REVISION, THE  
PREVIOUS ONE MUST BE DISREGARDED.



Color Munsell N 1 matte black

Painting plan 207N

Mounting	F-1/B14R(D)
----------	-------------

ECM	LOC	SUMMARY OF MODIFICATIONS			EXECUTED	CHECKED	RELEASED	DATE VER
EXECUTED	USERADMIN		THREE P. MOTOR CLOS ROLLED STEEL NEMA PREM					
CHECKED			FRAME 182/4TC IP55 TEFC					
RELEASED			WEG code: 14593691					
REL DT	10.04.2020	WMO	Jaragua do Sul	Product Engineering	SHEET	1 / 1		

3 HP      04 Poles      60Hz

A
---

WEG's property. Forbidden reproduction without previous authorization.

ZME A3





**NEMA**  
**Premium**



3PT9  
UL  
C US LISTED  
FOR SAFE AREA



Energy Verified

MADE IN MEXICO

**MAT: 14593691 CC029A**

**W01.TE0IC0X0N**

**MODEL 00318ET3EBMR182TC-S**

**19FEV2020 S/N:**

**For 60Hz: Class I, Zone 2, IIC**  
**Class I, Div.2, Gr. A,B,C,D - T3**

**Div 2 Inverter Duty (SF1.00)**

**CT 2:1/VT 1000:1**

<b>PH 3</b>	<b>FR</b>	<b>182/4TC</b>	<b>HP(KW)</b>	<b>3.0(2.2)</b>	<b>Hz</b>	<b>60</b>
<b>V</b>	<b>230/460</b>		<b>RPM</b>	<b>1765</b>		
<b>A</b>	<b>7.62/3.81</b>		<b>DUTY CONT.</b>			
<b>SFA</b>	<b>8.76/4.38</b>		<b>CODE K</b>	<b>DES B</b>	<b>IP55</b>	
<b>SF</b>	<b>1.15</b>	<b>INS CL F</b>	<b>AT</b>	<b>80K</b>	<b>AMB</b>	<b>40°C</b>
<b>PF</b>	<b>0.81</b>				<b>ENCL</b>	<b>TEFC</b>
						<b>NEMA NOM.EFF. 89.5%</b>

**ALT 1000 m.a.s.l. USABLE @ 208V 8.43A SF1.00**

**ALTERNATE RATING: 3.0HP 50Hz 190-220/380-415V SF1.15**

**9.08-8.15/4.54-4.32A 1455RPM EFF 86.7% (IE3) IEC 60034-1**



**INTERCHANGE ANY TWO LINE WIRES TO REVERSE THE ROTATION**

**For safe area-Inverter duty motor For 60Hz use on VPWM 1000:1 VT, 4:1 CT**

**DE: 6206-ZZ ODE: 6205-ZZ MOBIL POLYREX EM**

**WARNING: Motor must be grounded in accordance with local and national electrical codes to prevent serious electrical shocks. Disconnect power source before servicing unit.**

**AVERTISSEMENT: Le moteur doit être mis à la terre conformément aux codes électriques locaux et nationaux afin d'éviter tout choc électrique grave. Déconnectez l'alimentation avant l'entretien de la machine.**

