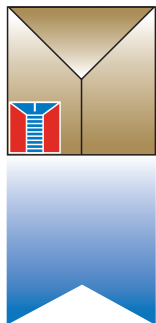


# FIXTURE HANGING ACCESSORIES



## Metallics



### STEEL DECKING THREADED ROD ANCHOR SYSTEM

SAVES TIME AND COST FROM TRADITIONAL HANGING METHODS

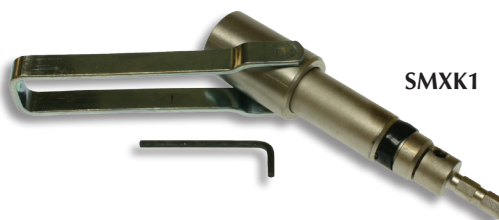
**Drill, Drive, Done!**



SMXB1

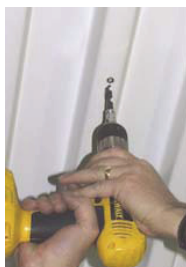


SMXK1

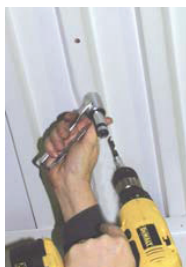


Expands to provide direct Vertical attachment in:

- Metal Deck (16-22 gauge)
- Z Purlin (16-18 gauge)
- Install in seconds
- Retaining nut is not required



**Step 1**



**Step 2**



**Step 3**



**Step 4**



**Completed Installation**

STOCK NO.	UPC NO.	MOUNT	ROD SIZE	WT. PER PKG.	STD. PKG.	SUGGESTED TRADE LIST PRICE PER
JSMX1	41435	Vertical	1/4 - 20	.44	5	63.10/ea pkg
JSMX2	41440	Vertical	3/8 - 16	.45	5	63.10/ea pkg
JSMX125	41570	Vertical	3/8 - 16	2.02	25	177.25/ea pkg <b>NEW</b>
JSMXP35	41580	Vertical Swivel	3/8 - 16	.48	5	77.33/ea pkg <b>NEW</b>
JSMXP3525	41625	Vertical Swivel	3/8 - 16	2.40	25	377.78/ea pkg <b>NEW</b>
SMXK1	41445	Installation tool		1.01	1	440.40/ea
SMXB1	41450	25/64" Custom Drill Bit for Tool		.90	1	44.63/ea

Installation Kit Includes: Sleeve, bit receiver, hex wrench, and 25/64" drill bit

PLEASE CALL FOR TECHNICAL INFORMATION