

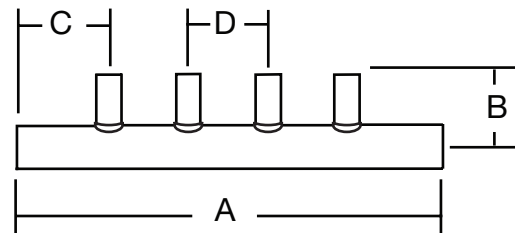
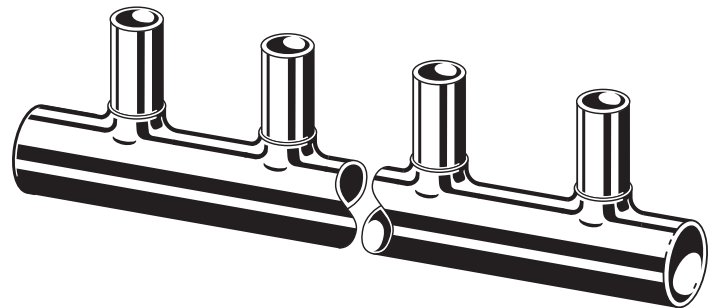
## Copper Manifold - Valveless

### Applications

Viega valveless copper manifolds are commonly used in commercial heating, cooling and snow melting applications. Viega valveless manifolds are made from type "L" copper tubing and are available in 2", 1½" and 1" configurations. The 2", 1½" and twelve circuit 1" manifolds are copper male headers that are designed to utilize Viega ProPress or solder fitting connections. 1" valveless manifolds in 2, 3 and 4 outlet are available with copper female inlet and copper male outlet connections.

### Features

- 2", 1½" and 12 circuit 1" manifolds are copper male headers
- 1" Copper manifolds 2, 3 and 4 outlet are Copper (female) x Copper (male) Headers
- Copper (male) outlets
- Type "L" Copper Tube
- All copper (male) connections are suitable for ProPress or solder attachment



### Specifications

Copper: Type "L" ASTM B88  
 Min Temp: 36°F  
 Max Temp: 250°F  
 Max pressure: 200 psi  
 Maximum Glycol Mix: 50%

1" Copper Manifolds max. flow: 13 gpm  
 1½" Copper Manifolds max. flow: 32 gpm  
 2" Copper Manifolds max. flow: 45 gpm

Part Number	Dimensions	Length with end cap and ball valve	A	B	C	D
17100	2" CM x ¾" CM - 18	69.25"	57"	2.38"	3.0"	3.0"
17120	1½" CM x ¾" CM - 18	68.0"	57"	2.13"	3.0"	3.0"
17143	1" CM x CM, ½" CM - 12	35.25"	26"	1.95"	2.0"	2.0"
17140	1" CF x CM, x ½" CM - 2	16.0"	6.75"	1.95"	2.38"	2.0"
17141	1" CF x CM, x ½" CM - 3	18.0"	8.75"	1.95"	2.38"	2.0"
17142	1" CF x CM, ½" CM - 4	20.0"	10.75"	1.95"	2.38"	2.0"

### Valves and Adapter Options for Valveless- Copper Manifolds

Part No.	Valve Type	Connection Type	Part No.	Connection Type
17263	Shut-Off Balancing	½" PEX Press x ½" Copper female	92026	½" PEX Press x ¾" Copper female adapter
17264	Shut-Off Balancing	⅝" PEX Press x ¾" Copper female	82031	⅝" PEX Press x ¾" Copper female adapter
17265	Shut-Off Balancing	¾" PEX Press x ¾" Copper female	92041	¾" PEX Press x ¾" Copper female adapter
17260	Shut-Off	½" PEX Press x ½" Copper female	99626	½" PEX Press x ¾" Copper female adapter
17261	Shut-Off	⅝" PEX Press x ¾" Copper female	99640	¾" PEX Press x ¾" Copper female adapter
17262	Shut-Off	¾" PEX Press x ¾" Copper female		

This document subject to updates. For the most current Viega technical literature please visit [www.viega.us](http://www.viega.us).  
 Click Services -> Click Electronic Literature Downloads -> Select Product Line -> Select Desired Document

**Viega LLC, 100 N. Broadway, 6<sup>th</sup> Floor • Wichita, KS 67202 • Ph: 800-976-9819 • Fax: 316-425-7618**