

SPEAKMAN® SEF-1801

Eyesaver® Laboratory Widespread Faucet with Integrated Eyewash

The Speakman SEF-1801 is a NSF 61 compliant widespread laboratory faucet with an integrated ANSI compliant aerated eyewash. Dedicated water ways allow the faucet and eyewash to work independently of each other.

EYEWASH FEATURES:

- Lift handle activator
- Dedicated water channel for eyewash
- Aerated chrome plated spray outlets with flip-top dust caps
- 2.8 gpm/10.6L/min @ 30 psi flow rate.
- Tepid water ready
- $\frac{3}{8}$ in. male compression connection

FAUCET FEATURES:

- Lead-free brass construction
- $\frac{1}{4}$ turn ceramic cartridges
- Vandal resistant 4 in. wrist blades handles with color-coded indexes
- Swivel or rigid spout up to 100 degrees
- Widespread installation
- $\frac{3}{8}$ in. male compression connections for hot & cold inlets
- 1.5 gpm (5.7 L/min) flow rate

COMPLIANCE:

- ASME A112.18.1/CSA B125 compliant
- NSF 61
- NSF 372 compliant (excludes ST option)
- ANSI/ISEA Z358.1 compliant

OPTIONS:

- 8 in. gooseneck spout
- Vandal resistant 0.5 gpm flow control
- Laminar flow outlet 1.5 gpm
- Non-aerated eyewash outlets
- Serrated tip with vacuum breaker (not NSF 372 compliant)
- SE-370 Thermostatic mixing valve

- ☐ - 8
- ☐ -BO
- ☐ -LF
- ☐ -NA
- ☐ -ST
- ☐ -TW

WARRANTY:

- 3 year limited



Patented design

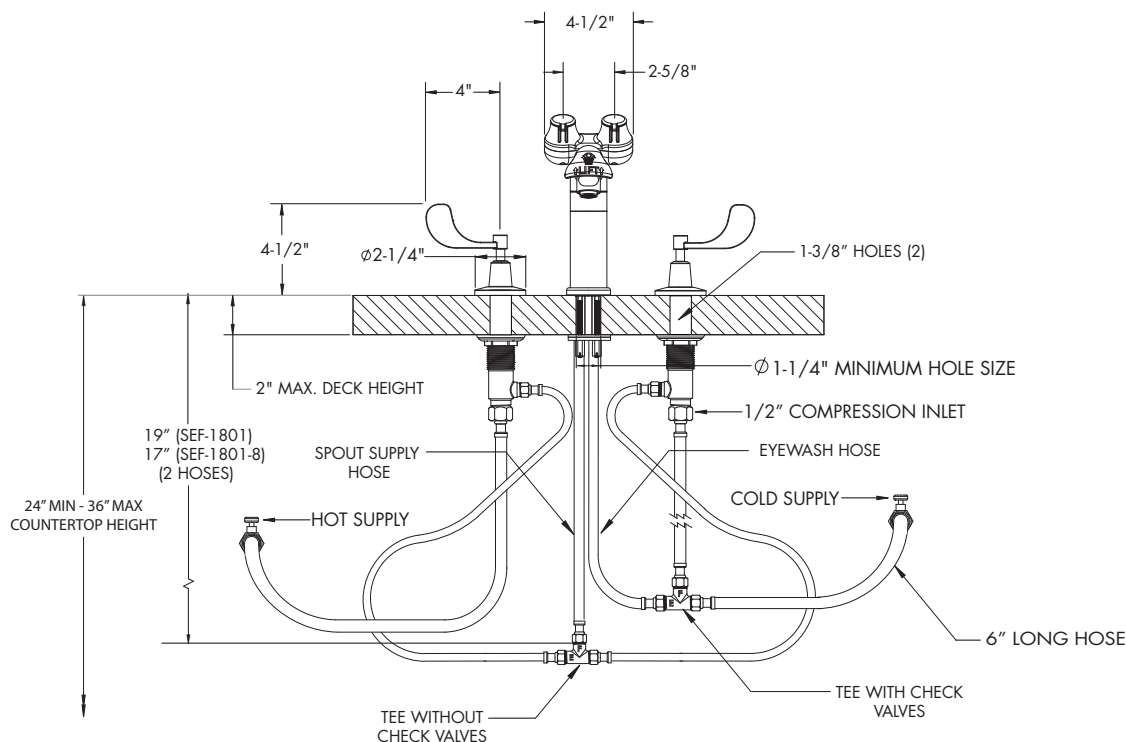
Architect/Engineer Approval Space:

SPEAKMAN
400 ANCHOR MILL ROAD
NEW CASTLE, DE 19720

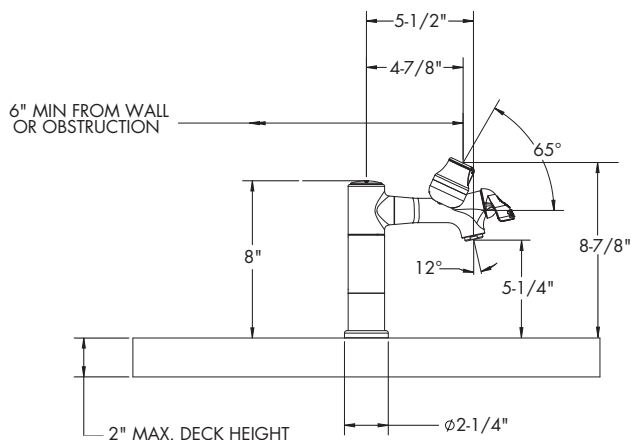
P: 800-537-2107
F: 800-977-2747
W: WWW.SPEAKMAN.COM
R: OCTOBER 2016

DIMENSIONS: NOTE: 1. Unless otherwise specified, all inlets are 3/8" compression with female threads. 2. All dimensions are in inches (millimeters) unless otherwise specified and are subject to change without notice.

FRONT VIEW



SEF-1801 SIDE VIEW (LESS HOSES)

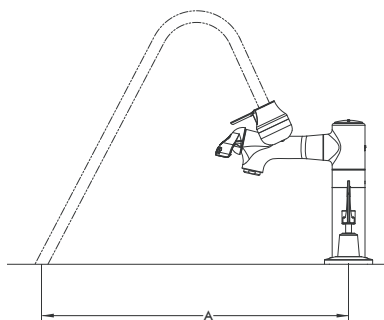


SEF-1800-CA-SL Spray Plume Length and Flow

Flowing Pressure	30 psi	40 psi	50 psi	60 psi	70 psi	80 psi
	2.07 Bar	2.76 Bar	3.45 Bar	4.14 Bar	4.83 Bar	5.52 Bar
Flow Rate	2.14 gpm	2.25 gpm	2.49 gpm	2.70 gpm	2.95 gpm	3.09 gpm
	8.1 L/min	8.5 L/min	9.4 L/min	10.2 L/min	11.2 L/min	11.7 L/min
Eyewash Distance	12"	13"	15"	18"	21"	24"
Plume "A"	30.5 cm	33.0 cm	38.1 cm	45.7 cm	53.3 cm	61.0 cm

SEF-1800-CA-SL-8 Spray Plume Length and Flow

Flowing Pressure	30 psi	40 psi	50 psi	60 psi	70 psi	80 psi
	2.07 Bar	2.76 Bar	3.45 Bar	4.14 Bar	4.83 Bar	5.52 Bar
Flow Rate	2.15 gpm	2.24 gpm	2.47 gpm	2.71 gpm	2.95 gpm	3.13 gpm
	8.1 L/min	8.5 L/min	9.3 L/min	10.3 L/min	11.2 L/min	11.8 L/min
Eyewash Distance	17"	18"	20"	23"	27"	29"
Plume "A"	43.2 cm	45.7 cm	50.8 cm	58.4 cm	68.6 cm	73.7 cm



Architect/Engineer Approval Space:

SPEAKMAN
400 ANCHOR MILL ROAD
NEW CASTLE, DE 19720

P: 800-537-2107
F: 800-977-2747
W: WWW.SPEAKMAN.COM
R: OCTOBER 2016