

Part No: 2882-623

Fabricated Low Head PIP

Risers

Desc: 10X3 PVC MECH VENT ASSEMBLY SDLEXMPT LHD

MSRP: 166.33

Part Code: 301

Weight(lbs): 4.619

Weight(kg): 2.095

Weight(gm): 2095

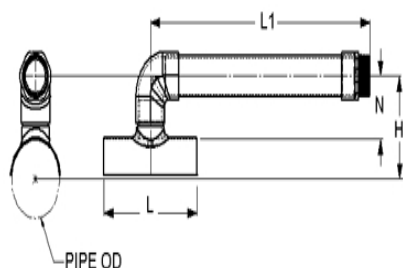
Size: 10 X 3

Color: WHITE

Material: PVC

Type Mechanical Vent Assembly

Connection Saddle X Riser/Vent



H = 10

L = 8-3/4

L1 = 21-3/4

N = 4-7/8

Fabricated Dimension References:

G = (LAYING LENGTH) intersection of center lines to bottom of socket/thread; 90° elbows, tees, crosses; $\pm 1/4$ & larger $\pm 1/2$ inch.

H = Intersection of center lines to face of fitting; 90° elbows, tees, crosses; $\pm 1/4$ inch.; wyes $\pm 1/2$ inch; 14" & larger inch.

J = Intersection of center lines to bottom of socket/thread; 45° elbows; $\pm 1/4$ inch; 14" & larger $\pm 1/2$ inch.

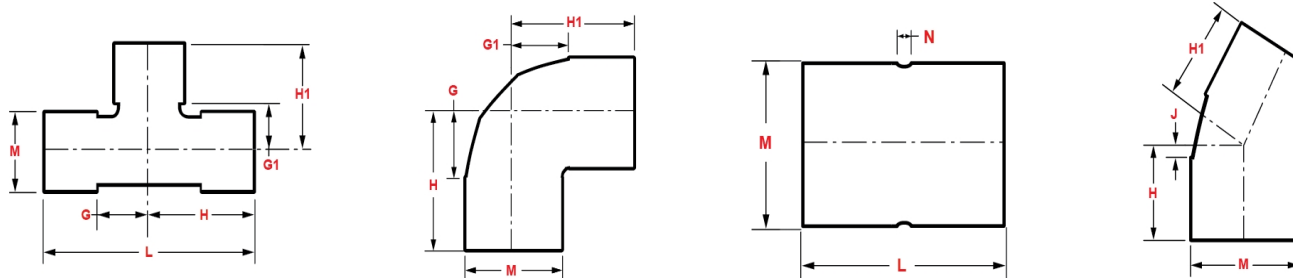
L = Overall length of fittings; $\pm 1/2$ inch; wyes ± 1 inch; 14" & larger ± 1 inch.

M = Outside diameter of socket/thread hub; $\pm 1/4$ inch.

N = Socket bottom to socket bottom; couplings; $\pm 1/2$ inch.

W = Height of cap; $\pm 1/4$ inch.

Typical Fabricated Dimension References



The information printed here is based on current information & product design at the time of publication and is subject to change without notification. Spears® ongoing commitment to product improvement may result in some variation. No representation, guarantees or warranties of any kind are as to its accuracy, suitability for particular application or results to be obtained therefrom. For verification of technical data or additional information, please contact Spears® Technical Service Department :: WEST COAST : (818) 364-1611 - EAST COAST : (717) 938-9006