

Part No: 2880-66430

Fabricated Low Head PIP

Risers

Desc: 12X4 PVC ORCHARD RISERX30 LOW HEAD PIP

MSRP: 60.66

Part Code: 301

Weight(lbs): 3.175

Weight(kg): 1.44

Weight(gm): 1440

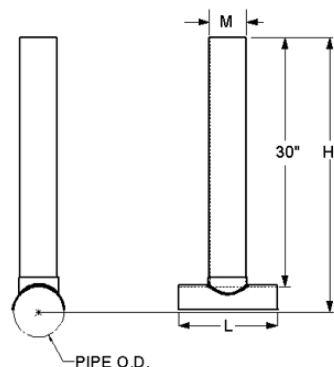
Size: 12 X 4

Color: WHITE

Material: PVC

Type Orchard Riser

Connection Saddle X Riser



H = 36-1/4

L = 8-1/2

M = 4-1/2

Fabricated Dimension References:

G = (LAYING LENGTH) intersection of center lines to bottom of socket/thread; 90° elbows, tees, crosses; ± 1/4 & larger ± 1/2 inch.

H = Intersection of center lines to face of fitting; 90° elbows, tees, crosses; ± 1/4 inch.; wyes ± 1/2 inch; 14" & larger inch.

J = Intersection of center lines to bottom of socket/thread; 45° elbows; ± 1/4 inch; 14" & larger ± 1/2 inch.

L = Overall length of fittings; ± 1/2 inch; wyes ± 1 inch; 14" & larger ± 1 inch.

M = Outside diameter of socket/thread hub; ± 1/4 inch.

N = Socket bottom to socket bottom; couplings; ± 1/2 inch.

W = Height of cap; ± 1/4 inch.

Typical Fabricated Dimension References

