

**Part No:** 3777-693

**Fabricated DWV**

**Combo Wye & 1/8 Bend**

**Desc:** 14X3 PVC RED COMB WYE&1/8 BEND SOC SCH40

**MSRP:** 1022.92

**Part Code:** 390

**Weight(lbs):** 30.596

**Weight(kg):** 13.878

**Weight(gm):** 13878

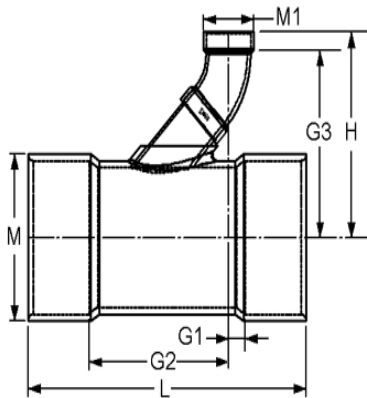
**Size:** 14"X14"X3"

**Color:** WHITE

**Material:** PVC

**Schedule** SCH 40 DWV- Reducing

**Connection** Socket x Socket x Socket



**G1** = 1-11/16

**G2** = 10-13/16

**G3** = 13-5/16

**H** = 14-13/16

**L** = 26-1/2

**M** = 14-7/8

**M1** = 4

## Fabricated Dimension References:

**G** = (LAYING LENGTH) intersection of center lines to bottom of socket/thread; 90° elbows, tees, crosses;  $\pm 1/4$  & larger  $\pm 1/2$  inch.

**H** = Intersection of center lines to face of fitting; 90° elbows, tees, crosses;  $\pm 1/4$  inch.; wyes  $\pm 1/2$  inch; 14" & larger inch.

**J** = Intersection of center lines to bottom of socket/thread; 45° elbows;  $\pm 1/4$  inch; 14" & larger  $\pm 1/2$  inch.

**L** = Overall length of fittings;  $\pm 1/2$  inch; wyes  $\pm 1$  inch; 14" & larger  $\pm 1$  inch.

**M** = Outside diameter of socket/thread hub;  $\pm 1/4$  inch.

**N** = Socket bottom to socket bottom; couplings;  $\pm 1/2$  inch.

**W** = Height of cap;  $\pm 1/4$  inch.

## Typical Fabricated Dimension References

