

Part No: 3977-918

Fabricated DWV

Combo Wye & 1/8 Bend

Desc: 24X18 PVC RD COMB WYE&1/8 BND SOC

MSRP: 10260.11

Part Code: 400

Weight(lbs): 471.496

Weight(kg): 213.867

Weight(gm): 213867

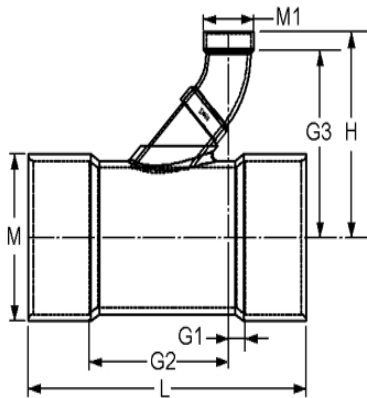
Size: 24 X 18

Color: GRAY

Material: PVC

Schedule SCH 80 DWV-Reducing

Connection Socket x Socket x Socket



G1 = 3

G2 = 39-1/2

G3 = 38-5/8

H = 47-5/8

L = 66-1/2

M = 26-7/16

M1 = 19-7/8

Fabricated Dimension References:

G = (LAYING LENGTH) intersection of center lines to bottom of socket/thread; 90° elbows, tees, crosses; ± 1/4 & larger ± 1/2 inch.

H = Intersection of center lines to face of fitting; 90° elbows, tees, crosses; ± 1/4 inch.; wyes ± 1/2 inch; 14" & larger inch.

J = Intersection of center lines to bottom of socket/thread; 45° elbows; ± 1/4 inch; 14" & larger ± 1/2 inch.

L = Overall length of fittings; ± 1/2 inch; wyes ± 1 inch; 14" & larger ± 1 inch.

M = Outside diameter of socket/thread hub; ± 1/4 inch.

N = Socket bottom to socket bottom; couplings; ± 1/2 inch.

W = Height of cap; ± 1/4 inch.

Typical Fabricated Dimension References

