

**Part No:** 4301-664

**Fume & Air Duct**

**Tee**

**Desc:** 12X4 PVC RED TEE SOC DUCT

**MSRP:** 514.29

**Part Code:** 430

**Weight(lbs):** 7.068

**Weight(kg):** 3.206

**Weight(gm):** 3206

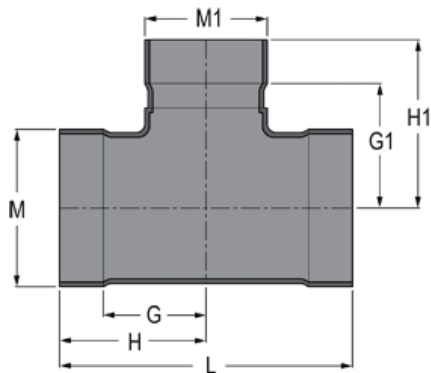
**Size:** 12X4

**Color:** GRAY

**Material:** PVC

**Type** Reducing Tee

**Connection** Belled Socket



**G** = 5

**G1** = 9-1/2

**H** = 7-1/2

**H1** = 12

**L** = 15

**M** = 13-1/8

**M1** = 5

## Fabricated Dimension References:

**G** = (LAYING LENGTH) intersection of center lines to bottom of socket/thread; 90° elbows, tees, crosses; ± 1/4 & larger ± 1/2 inch.

**H** = Intersection of center lines to face of fitting; 90° elbows, tees, crosses; ± 1/4 inch.; wyes ± 1/2 inch; 14" & larger inch.

**J** = Intersection of center lines to bottom of socket/thread; 45° elbows; ± 1/4 inch; 14" & larger ± 1/2 inch.

**L** = Overall length of fittings; ± 1/2 inch; wyes ± 1 inch; 14" & larger ± 1 inch.

**M** = Outside diameter of socket/thread hub; ± 1/4 inch.

**N** = Socket bottom to socket bottom; couplings; ± 1/2 inch.

**W** = Height of cap; ± 1/4 inch.

## Typical Fabricated Dimension References

