

Part No: 889-040PG

Nipples

Nipple

Desc: 3X4 PVC NIPPLE PLAINXGROOVE SCH80

MSRP: 32.64

Part Code: 120

Weight(lbs): 0.681

Weight(kg): 0.309

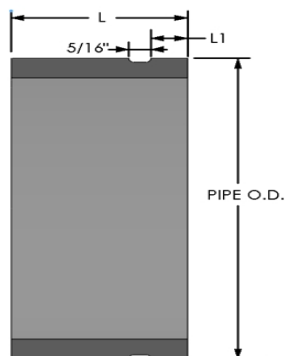
Weight(gm): 309

Size: 3 X 4

Color: GRAY

Material: PVC

Nipple Type Plain X Groove



L = 4

L1 = 5/8

Fabricated Dimension References:

- G** = (LAYING LENGTH) intersection of center lines to bottom of socket/thread; 90° elbows, tees, crosses; $\pm 1/4$ inch & larger $\pm 1/2$ inch.
- H** = Intersection of center lines to face of fitting; 90° elbows, tees, crosses; $\pm 1/4$ inch.; wyes $\pm 1/2$ inch; 14" & larger inch.
- J** = Intersection of center lines to bottom of socket/thread; 45° elbows; $\pm 1/4$ inch; 14" & larger $\pm 1/2$ inch.
- L** = Overall length of fittings; $\pm 1/2$ inch; wyes ± 1 inch; 14" & larger ± 1 inch.
- M** = Outside diameter of socket/thread hub; $\pm 1/4$ inch.
- N** = Socket bottom to socket bottom; couplings; $\pm 1/2$ inch.
- W** = Height of cap; $\pm 1/4$ inch.

Typical Fabricated Dimension References

