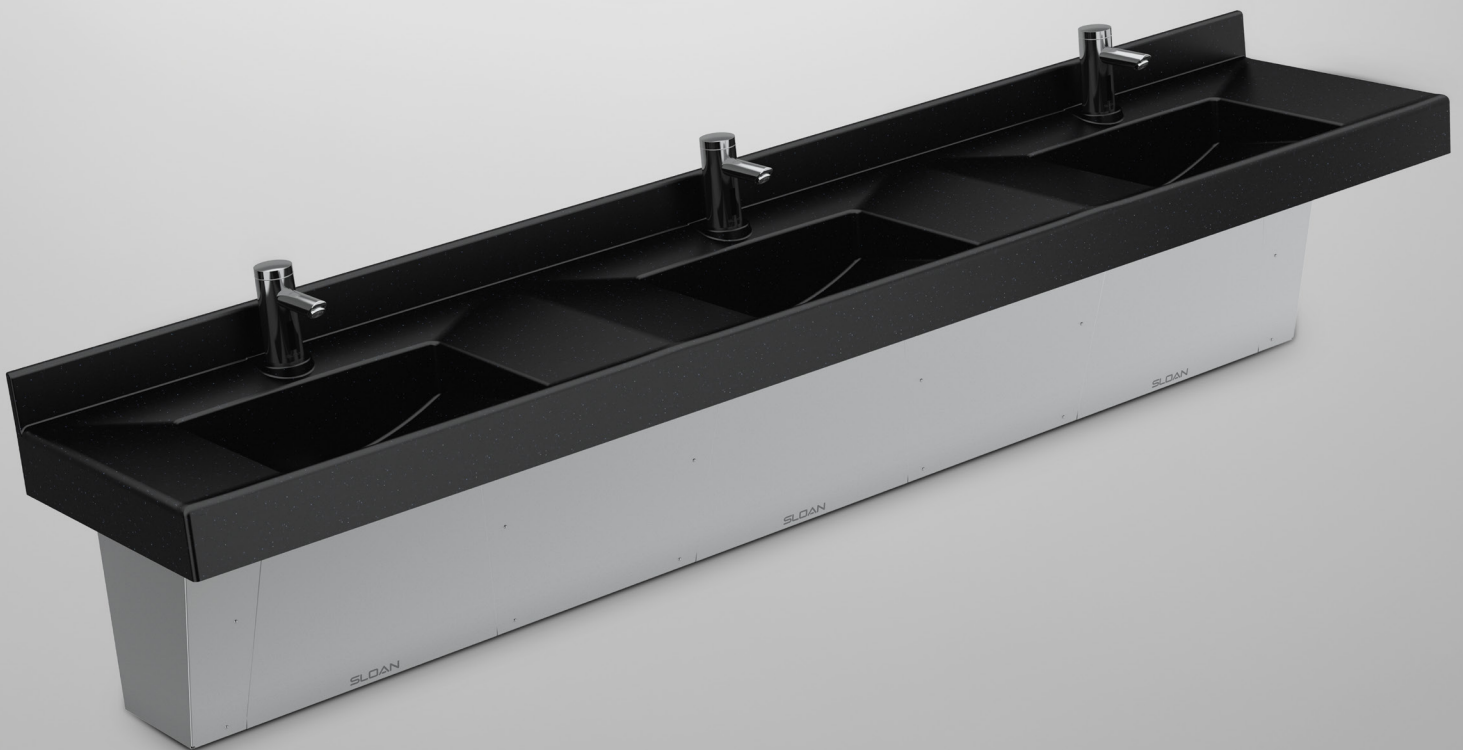


SMART. SUSTAINABLE. STYLISH.

Full Line Sink Collection



SLOAN®

EYE-CATCHING and GAME-CHANGING

Sinks are the most visible of the functional elements in a commercial restroom. Floors, walls and mirrors may set the tone, but sinks pull together the designer or architect's vision. Yet simply catching the eye isn't enough. Building managers and engineers have higher expectations than ever. How can a sink do more?



A sink for every application

From high-end hotels to government buildings, sleek offices to hospitals, there's a Sloan sink design for every setting. The sinks you'll find on the following pages are the perfect complement to our faucets, soap dispensers, hand dryers, flushometers, water closets, urinals and more.



AER-DEC®
Innovative design
integrating faucet, soap
dispenser and hand dryer



Bio-Deck™
Made from renewable
materials—functional
and eco-friendly



Designer Series™
Impeccable craftsmanship
for upscale customization



Stainless Steel
Hands-free stations for
hygienic environments



SloanStone®
Rugged and easy to
maintain—perfect for
high-traffic restrooms



Vitreous China
Reliable and economical

Sustainable, durable and customizable

Sustainable: Sustainable building isn't a trend. It's the baseline. All Sloan sinks are designed to take full advantage of our water-saving sensor faucets, and many are built with 100% recyclable materials.

Durable: Many Sloan sinks are IAPMO-certified, passing a complete battery of tests to prove they can stand up to any commercial application.

Customizable: Many Sloan sinks can be built with custom sizes, materials, colors and configurations. Use our online architectural worksheets to specify your ideal configuration.



The AER-DEC® integrated sink

Soap, rinse, dry—all three steps, without taking any.

The ultimate innovation for any high-end washroom, the AER-DEC combines soap dispenser, faucet, hand dryer, and sink basin into one beautiful, touch-free, hygienic, highly efficient system.

Visitors can now soap, rinse and dry their hands without reaching for paper towels or walking to a separate dryer—so your stylish restrooms stay neater and require less cleaning.

The AER-DEC combines the best ideas in commercial sinks into a single state-of-the-art installation. And it combines them in a sleek, contemporary design that looks as fantastic as it works—in any setting.

Integrated to perfection

The AER-DEC combines several of Sloan's most advanced components into the industry's state-of-the-art integrated sink, from soap to rinse to dry.



Unlimited customization.

With options for over 100 colors, Corian® or quartz materials, width, configuration and mounting—not to mention LED light enhancement—there is literally no limit to the ways you can customize your AER-DEC sink. See pages 8–9 for more details.



Sloan® Basin with Air Dam Technology

The AER-DEC solves the updraft problem inherent to other sinks with integrated hand dryers. Our built-in patent-pending basin directs the airflow into air dam openings at the front of the sink, directing any backsplash away from the user.



Sloan® Touch-Free Soap Dispenser

Active infrared sensing delivers a pre-measured application of soap to reduce waste, improve hygiene and eliminate soap drips on the sink deck.



BASYS® Sensor-Activated Faucet

The bold lines of the BASYS® sensor activated faucet make a statement in any setting, and its range of power options makes it a model of sustainability.



Sloan® High-Speed Hand Dryer

Power, innovation and conservation combine in a sleek design. With a pioneering sound suppression system and HEPA air filter, the Sloan hand dryer delivers quiet, clean air flow to complete the hygienic, touch-free handwashing experience.



Designer Series™ sinks

Style without limits

For upscale settings where your design needs to make a statement, Sloan's Designer Series offers an endless array of configurations, colors, finishes and functionality.

As different as they may be in execution, all Designer Series sinks are visually striking, impeccably crafted and remarkably durable. They bring a clean and modern appeal to restrooms of any size in hotels, restaurants, office suites and high-end retail establishments.

All Designer Series sinks are available in quartz or Corian®, with more than 100 color options to fit any design vision. After selecting a sink color, enhance that vision by pairing the design with any of Sloan's faucets and soap dispensers.

Shapes that make a statement

The Designer Series is all about customization, and it starts with shape. Bold, innovative shapes tell visitors they are not in just any restroom. If your contemporary designs push the boundaries of convention, you can customize a Designer Series sink to make your vision a reality.



Round Vessel



Gradient



Weir Deck



Open Front



Counter Top



Urban Pedestal

For more options, see pages 8–9.

Round Vessel

A striking vitreous china bowl combined with a deck creates a contemporary design.

- Available in 1-, 2-, 3- and 4+ station configurations



DSVR Series
featuring EAF-200 faucet with extension

Gradient

A strong, massive presence with a dramatically angled basin.

- Available in 1-, 2-, 3- and 4+ station configurations

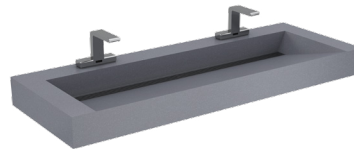


DSG Series
featuring EFX-250 faucet and ESD-500 soap dispenser

Weir Deck

The basin ascends to the very front edge and includes a stainless steel grate.

- Available in 1-, 2-, 3- and 4+ station configurations



DSWD Series
featuring EAF-900 faucet

Open Front

Defy gravity with this stunning, open design.

- Available in 1-, 2-, 3- and 4+ station configurations



DSOF Series
featuring ETF-80 faucet and ESD-800 soap dispenser

Counter Top

Simple. Stark. Classic.

- Available in 1-, 2-, 3- and 4+ station configurations



DSCT Series
featuring ETF-610 faucet and ESD-600 soap dispenser

Urban Pedestal

Stands proudly alone with monumental verticality.

- Available in single-station only



DSUP Series
featuring EAF-700 faucet and ESD-700 soap dispenser

Your vision. Your sinks.

We believe sinks should enhance your restroom design vision, not limit it. That's why you can customize the AER-DEC® and Designer Series™ sinks in unlimited ways, from size and installation to material and color.

Visit sloan.com/sinks to discover **online architectural worksheets** that make customization simple. Just complete a worksheet to specify your ideal configuration.

Design your custom sink

From configuration to color, your customization options for **Designer Series** and **AER-DEC** sinks are limited only by your imagination.

You can specify custom widths, side and backsplashes, or various mounting options. You can include a hand dryer (AER-DEC only) and soap dispenser that can be individual per station or be shared between stations. **LED lights within the basin** can even change color at the touch of a remote. All these sinks pair beautifully with Sloan sensor-activated faucets and soap dispensers.

Contact Sloan to choose from 100+ color options in Corian® or quartz.



See below for more ways sinks can be customized to complete your contemporary restroom.

Customization options



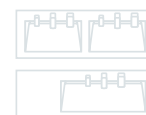
Choose a material and color.

- Quartz in more than 100 colors
- Solid-surface DuPont™ Corian in more than 100 colors



Choose a standard or custom width.

- Standard widths of 30", 60", 90" or 120"
- Customize the width to suit your restroom's dimensions



Choose a configuration.

- Basins can be centered or offset
- Trough style or independent stations



AER-DEC 82000 featuring 2-tone color selection, enclosure and LED lights.



Choose a mounting option.

- Angle bracket
- Frame
- Enclosure



Choose other options.

- Trash hole
- Two-tone sink
- Finishes for faucets, soap dispensers and (AER-DEC only) hand dryers
- Faucet etching of logo/emblem
- Purse hooks



**Contact your Sloan rep
for all other customization
options and to work with
Sloan's design team.**



SloanStone® sinks

Low-maintenance sinks for high-traffic settings

Schools. Office buildings. Airports. Stadiums. Wherever lots of people get together, bathrooms have to be ultra-rugged and easy to maintain.

The SloanStone sink system uses a molded, non-porous surface material that eliminates all adhesives and sealants for tough durability and easy repairs.

SloanStone sinks are built with these features:

- **Easy-access components.** All serviceable components, including electronics, can be easily accessed. Some models can even be accessed from above.
- **Vandal resistance.** Each design provides a level of vandal resistance, from easily cleaned surfaces to integrated faucets and locked access to components.

Configurations for any setting

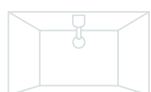
SloanStone sinks are available in up to 25 color options and six different configurations:



Gradient



Electronic Washstation



Electronic Lavatory Countertop



Electronic Lavatory Countertop



Electronic Lavatory System



Electronic Washstation Fountain

Gradient

- Available in 1-, 2-, 3- and 4-station configurations



ELGR Series
featuring EAF-350 faucet

Electronic Washstation

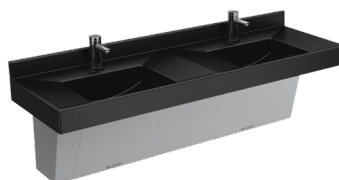
- Available in 2- and 3-station configurations; wall-mounted or floor-mounted options



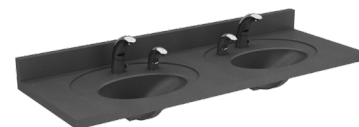
EW Series
with integrated faucet and soap dispenser

Electronic Lavatory Countertop

- Available in 1-, 2-, 3- and 4-station configurations



ELC 80000 Series
featuring EAF-200 faucet



ELC40000/60000 Series
featuring EAF-150 faucet and ESD-1500 soap dispenser

Electronic Lavatory System

- Available in 1-, 2- and 3-station configurations; wall-mounted and floor-mounted options



ELS Series
featuring SF-2150 faucet and ESD-2100 soap dispenser

Electronic Washstation Fountain

- Available in 2-, 3- and 4-station configurations; wall-mounted and floor-mounted options



EWF Series
with integrated faucet and soap dispenser



Promoting hygiene with functional elegance

Sloan vitreous china sinks are available for wall-hung or countertop installation. They are perfect for any application—from executive washrooms to schools, entertainment venues, transportation centers or government buildings.

Options include a backsplash, wheelchair access, and 4", 8" or single-hole centerset punching. You can also add a ceramic shroud under the sink (select models) for a sleek, clean appearance.

Match a Sloan sink with one of our electronic sensor faucets and soap dispensers. All models are IAPMO tested and certified. Add our revolutionary SloanTec™ Glaze to your sink to help keep it clean and looking great.

Undermount lavatories

20" x 18" | 508 mm x 457 mm



SS-3001

22" x 16" | 559 mm x 406 mm



SS-3021

Drop-in lavatories

20" x 17" | 508 mm x 432 mm



SS-3102 Single Hole
SS-3002 4" Centerset
SS-3802 8" Centerset

Wall-hung lavatories

With 4" backsplash

20" x 18" | 508 mm x 457 mm



SS-3103 Single Hole
SS-3003 4" Centerset
SS-3803 8" Centerset

ADA wheelchair

27" x 20" | 686 mm x 508 mm



SS-3104 Single Hole
SS-3004 4" Centerset
SS-3804 8" Centerset

Ledgeback

21" x 20" | 533 mm x 508 mm



SS-3165 Single Hole
SS-3065 4" Centerset

Optional
SS-27-A Shroud

Wall-hung lavatory

Corner

22" x 17" | 559 mm x 432 mm



SS-3145 Single Hole

Vessel lavatories

Round

Diameter 17" | 432 mm



SS-3036 Round

Square

19" x 19" | 483 mm x 483 mm



SS-3026 Square Single Hole



Uncompromising options

Sloan hands-free **stainless steel handwashing and scrub sinks** are ideal for healthcare applications when you need the highest level of handwashing hygiene.

Sloan's **scrub sink** features front-of-sink sensors designed to maintain faucet flow while a surgical scrub is performed as well as knee-activated soap dispensers for ease of use.

Sloan **Bio-Deck™ sinks** are made from ground corncobs and other bio-based materials instead of petroleum-based substances, but they're durable enough for any commercial restroom setting.

Stainless steel sinks

Hygienic, touch-free and tough

Built from 14-gauge type 304 stainless steel, these sinks endure the harshest working environments with minimal maintenance. And for ultimate hygiene, touch-free faucets and soap dispensers combine with a sink design that's ideal for complete washdowns.

Our stainless sink systems also include:

- Pre-plumbing and pre-assembly for easy installation
- Lift-out front panels for easy maintenance
- Sound-softening inside panels

Sloan stainless sink systems are available in single-, double- and triple-station configurations to accommodate every setting.

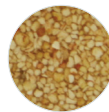


Bio-Deck™ sinks

Eco-friendly and naturally functional

Make a statement with style! Pair Bio-Deck sinks with Sloan sensor-activated faucets for the ultimate in sustainable sink solutions—ideal for places where it's important to promote environmentally conscious commercial construction.

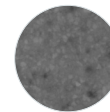
These sinks are available in one- and two-station configurations, in four natural colors:



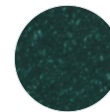
Corn
Cob



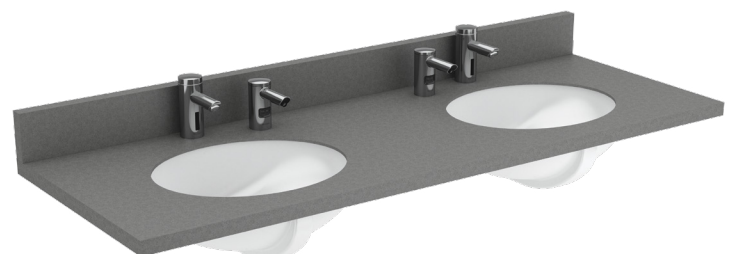
Rustic
Maple



Grey



Jade
Green



Sloan is the leader in smart, sustainable design for the total commercial restroom.

Contact your Sloan representative today to learn how our complete line of sinks, sensor faucets, flushometers, water closets, urinals and more can deliver a distinctive sense of functional elegance for your next project.



sloan.com/sinks | 800.982.5839