

**DESCRIPTION**

Stainless Steel 1-Station Wall-Mounted Handwashing Sink.

**DETAILS**

- Material: Stainless Steel
- Width: 19" (483mm)

**FEATURES**

Stainless Steel Hand Washing Sink with the following features:

- Sink constructed from 14 gauge, Type 304 stainless steel with brushed stainless
- Cabinet constructed from 18 gauge, Type 304 stainless steel with brushed stainless
- Outer rim of sink raised to help prevent splashing and dripping on floors
- Angled front corners to enhance ease of use and protect users from sharp corners
- "Lift-out" style front access panel for easy maintenance access
- 1 1/2" stainless steel dome strainer with integral tailpiece and P-Trap
- Z-clip" wall hanger for mounting (fasteners by others)
- Sink is shipped pre-plumbed for easy installation

**COMPLIANCES & CERTIFICATIONS**

(cUPC Certified)

**RECOMMENDED SPECIFICATION**

Sloan Stainless Series Handwashing Sink model no. EHS 1000. Product to be made of 14 gauge type 304 stainless steel with Sloan sensor faucets (sold separately).

**DOWNLOADS**

- [EHS-1000/ESS-2000/3000 Series Repair and Maintenance Guide](#)
- [Additional Downloads](#)

**NOTES**

All information contained within this document subject to change without notice.

Looking for other variations of the EHS-1000 product? [View the general spec sheet with all options.](#)

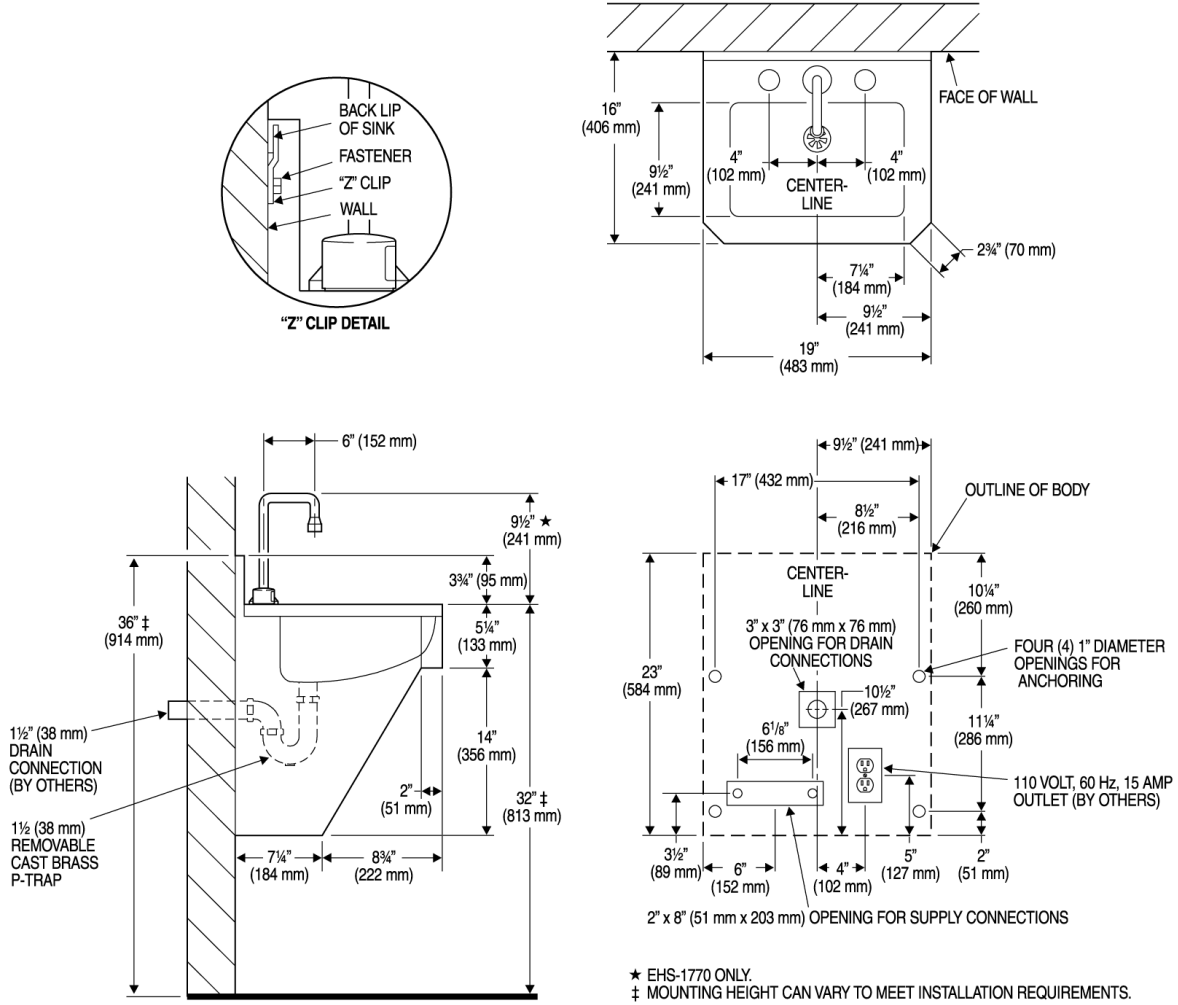
[Find a compatible faucet](#) for this sink.

[Find a matching soap dispenser](#) for this sink.

Sloan 10500 Seymour Ave, Franklin Park, IL 60131

Phone: 800.982.5839 • Fax: 800.447.8329 • [sloan.com](http://sloan.com)

**ROUGH-IN**



**Sloan 10500 Seymour Ave, Franklin Park, IL 60131**

Phone: 800.982.5839 • Fax: 800.447.8329 • [sloan.com](http://sloan.com)