

**Part No:** 2880-79530

**Fabricated Low Head PIP**

**Risers**

**Desc:** 18X15 PVC ORCHARD RISERX30 LOW HEAD PIP

**MSRP:** 362.12

**Part Code:** 301

**Weight(lbs):** 20.437

**Weight(kg):** 9.27

**Weight(gm):** 9270

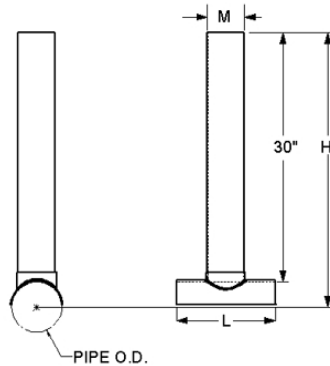
**Size:** 18 X 15

**Color:** WHITE

**Material:** PVC

**Type** Orchard Riser

**Connection** Saddle X Riser



**H** = 39-3/8

**L** = 25

**M** = 15-5/16

## Fabricated Dimension References:

- G** = (LAYING LENGTH) intersection of center lines to bottom of socket/thread; 90° elbows, tees, crosses;  $\pm 1/4$  & larger  $\pm 1/2$  inch.
- H** = Intersection of center lines to face of fitting; 90° elbows, tees, crosses;  $\pm 1/4$  inch.; wyes  $\pm 1/2$  inch; 14" & larger inch.
- J** = Intersection of center lines to bottom of socket/thread; 45° elbows;  $\pm 1/4$  inch; 14" & larger  $\pm 1/2$  inch.
- L** = Overall length of fittings;  $\pm 1/2$  inch; wyes  $\pm 1$  inch; 14" & larger  $\pm 1$  inch.
- M** = Outside diameter of socket/thread hub;  $\pm 1/4$  inch.
- N** = Socket bottom to socket bottom; couplings;  $\pm 1/2$  inch.
- W** = Height of cap;  $\pm 1/4$  inch.

## Typical Fabricated Dimension References

