

Part No: 3990-621

Fabricated DWV

Sanitary Tee

Desc: 10X2 PVC RED SANITARY TEE SOC SCH80

MSRP: 608.01

Part Code: 400

Weight(lbs): 23.457

Weight(kg): 10.64

Weight(gm): 10640

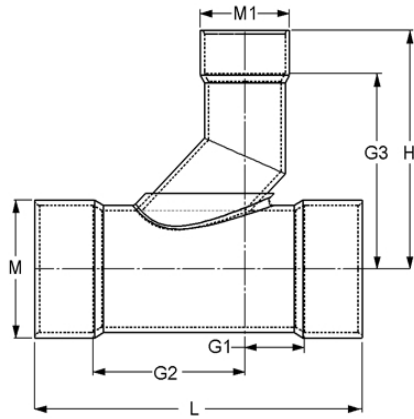
Size: 10 X 2

Color: GRAY

Material: PVC

Type Sch 80 DWV- Reducer

Connection Socket X Socket X Socket



M = 11-15/16

M1 = 2-7/8

G1 = 4

G2 = 6-1/4

G3 = 9-9/16

H = 11-1/8

L = 20-3/4

Fabricated Dimension References:

G = (LAYING LENGTH) intersection of center lines to bottom of socket/thread; 90° elbows, tees, crosses; $\pm 1/4$ & larger $\pm 1/2$ inch.

H = Intersection of center lines to face of fitting; 90° elbows, tees, crosses; $\pm 1/4$ inch.; wyes $\pm 1/2$ inch; 14" & larger inch.

J = Intersection of center lines to bottom of socket/thread; 45° elbows; $\pm 1/4$ inch; 14" & larger $\pm 1/2$ inch.

L = Overall length of fittings; $\pm 1/2$ inch; wyes ± 1 inch; 14" & larger ± 1 inch.

M = Outside diameter of socket/thread hub; $\pm 1/4$ inch.

N = Socket bottom to socket bottom; couplings; $\pm 1/2$ inch.

W = Height of cap; $\pm 1/4$ inch.

Typical Fabricated Dimension References

