



# CONTRACTOR PRODUCT GUIDE

CANADA





# CONTENTS

## **SECTION 1: THE SHARKBITE® CONNECTION SYSTEM**

1-A: CORE FITTINGS	3
1-B: RADIANT FITTINGS	7
1-C: Transition FITTINGS	7
1-D: FIRE FITTINGS	8
1-E: FLEX HOSES	8
1-F: STOPS & FIXTURE SUPPLY FITTINGS	9
1-G: ADDITIONAL PRODUCTS	10
1-H: KITS	11
1-I: TOOLS	12

## **SECTION 2: SHARKBITE VALVES**

2-A: PRESSURE REGULATING VALVES	12
2-B: THERMOSTATIC MIXING VALVES	13
2-C: BALL VALVES	13
2-D: pvc BALL VALVES	13
2-E: CHECK VALVES	14
2-F: General Supply Valves	14

## **SECTION 3: SHARKBITE PEX BARB FITTINGS**

3-A: PEX BARB CORE FITTINGS	14
3-B: PEX BARB TRANSITION FITTINGS	17
3-C: PEX Barb Poly Alloy Fittings	18
3-D: PEX Barb Fire Fittings **	19
3-E: PEX BARB STOPS & FIXTURE SUPPLY FITTINGS	19
3-F: PEX BARB ADDITIONAL PRODUCTS	19
3-G: PEX BARB ACCESSORIES	20
3-H: PEX BARB TOOLS	21

## **SECTION 4: SHARKBITE PEX PIPE**

4-A: POTABLE WATER PEX Pipe	24
4-B: SPECIAL APPLICATION PEX Pipe	25

## **BENEFITS OF SHARKBITE PEX**

22

## **MADE IN NORTH AMERICA**

23

## **SHARKBITE FAQ**

44



<b>SECTION 5: CASH ACME® PRESSURE REGULATING VALVES</b>	<b>27</b>
5-A: EB45	27
5-B: EB25	29
5-C: E3	31
5-D: E41	31
5-E: E56	32
5-F: EB75	32
5-G: PRESSURE REGULATOR REPAIR KITS	32
<b>SECTION 6: CASH ACME THERMOSTATIC MIXING VALVES</b>	<b>33</b>
6-A: DISTRIBUTION & IN-LINE THERMOSTATIC MIXING VALVES	33
6-B: IN-LINE THERMOSTATIC MIXING VALVES	33
6-C: RADIANT HEATING THERMOSTATIC MIXING VALVES	34
6-D: HIGH CAPACITY THERMOSTATIC MIXING VALVES	34
6-E: SHUT-OFF THERMOSTATIC MIXING VALVES	34
6-F: MASTER DISTRIBUTION THERMOSTATIC MIXING VALVES	34
6-G: THERMOSTATIC MIXING VALVE ACCESSORIES	34
<b>SECTION 7: CASH ACME RELIEF VALVES</b>	<b>35</b>
7-A: T&P RELIEF VALVES	35
7-B: PRESSURE ONLY RELIEF VALVES	36
7-C: VACUUM RELIEF VALVES	38
<b>SECTION 8: CASH ACME BACKFLOW PREVENTION</b>	<b>38</b>
8-A: VACUUM BREAKERS	38
8-B: DUAL CHECK BACKFLOW PREVENTERS	39
<b>SECTION 9: CASH ACME GENERAL PLUMBING &amp; HEATING PRODUCTS</b>	<b>40</b>
9-A: PLUMBING PRODUCTS	40
9-B: HEATING PRODUCTS	40
<b>LIMITED WARRANTY</b>	<b>46</b>



# SHARKBITE®

## CONNECTION SYSTEM

### CUT. PUSH. DONE.

The SharkBite Connection System makes any plumbing project fast and easy with our unique push-to-connect technology. When you insert a pipe into the SharkBite quick connect fittings, the stainless steel teeth bite down and grip the pipe, while the specially formulated O-ring compresses to create the perfect watertight seal. No soldering, clamps, unions or glue.

Our product works with your existing plumbing, is easy to disassemble for changing and reusing fittings, and can be rotated for easier installation in tight spaces. Perfect for joining Copper, PEX, CPVC or PE-RT pipe, SharkBite is the no fuss way to fix small leaks or plumb a whole house.

Our proven system includes hundreds of products from dozens of different fittings, a wide range of push-to-connect valves and even our own SharkBite PEX Pipe to make completing a job even easier.

Compatible with many Cash Acme valves, try the SharkBite connection system for your next project and discover just how fast and easy fixing a leak or plumbing a house should be.

**[www.sharkbite.ca](http://www.sharkbite.ca)**

***All SharkBite fittings are made of Lead Free DZR brass and exceed ASSE 1061 Section 1V, 4.1 Materials-Dezincification (DZR) - ISO 6509 standards.***



PRODUCT DESCRIPTION		PART NUMBER	QTY/BAG
<b>SECTION 1: THE SHARKBITE CONNECTION SYSTEM</b>			
<b>1-A: CORE FITTINGS</b>			
<b>COUPLINGS</b>			
1/4" (3/8" OD) X 1/4" (3/8" OD)		U004LF	6
3/8" (1/2" OD) X 3/8" (1/2" OD)		U006LF	6
1/2" X 1/2"		U008LF	12
3/4" X 3/4"		U016LF	12
1" X 1"		U020LF	6
LARGE DIAMETER	1-1/4" X 1-1/4" (For PEX applications, stiffeners are sold separately)	SB0135	1
	1-1/2" X 1-1/2" (For PEX applications, stiffeners are sold separately)	SB0141	1
	2" X 2" (For PEX applications, stiffeners are sold separately)	SB0154	1
<b>REDUCING COUPLINGS</b>			
1/4" (3/8" OD) X 1/2" Reducing		U050LF	6
3/8" (1/2" OD) X 1/2" Reducing		U009LF	6
3/4" X 1/2" Reducing		U058LF	12
1" X 3/4" Reducing		U060LF	6
LARGE DIAMETER	1-1/4" X 1" Reducing (For PEX applications, stiffeners are sold separately)	SB013528	1
	1-1/2" X 1" Reducing (For PEX applications, stiffeners are sold separately)	SB014128	1
	1-1/2" X 1-1/4" Reducing (For PEX applications, stiffeners are sold separately)	SB014135	1
	2" X 1-1/2" Reducing (For PEX applications, stiffeners are sold separately)	SB015441	1
<b>SLIP COUPLINGS (SLIP END ONLY SUITABLE FOR COPPER AND CPVC)</b>			
1/2" X 1/2"		U3008LF	3
3/4" X 3/4"		U3016LF	3
1" X 1"		U3020LF	1
LARGE DIAMETER	1-1/4" X 1-1/4" (For PEX applications, stiffeners are sold separately)	SB0635	1
	1-1/2" X 1-1/2" (For PEX applications, stiffeners are sold separately)	SB0641	1
	2" X 2" (For PEX applications, stiffeners are sold separately)	SB0654	1
<b>FEMALE CONNECTORS</b>			
1/4" (3/8" OD) X 1/2" FNPT Reducing		U066LF	6
3/8" (1/2" OD) X 1/2" FNPT Reducing		U070LF	6
1/2" X 3/4" FNPT Reducing		U068LF	6
1/2" X 1/2" FNPT Straight		U072LF	12
3/4" X 3/4" FNPT Straight		U088LF	6
3/4" X 1/2" FNPT Bullnose		U092LF	6
1" X 1" FNPT Straight		U094LF	6

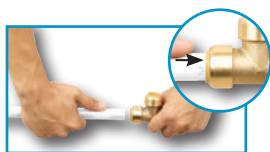


## HOW TO INSTALL SHARKBITE PUSH-TO-CONNECT PRODUCTS



### CUT:

Cut the pipe square removing rough edges and debris. Mark the pipe to the correct insertion depth.



### PUSH:

Push pipe and fitting together up to the depth mark.



### DONE.



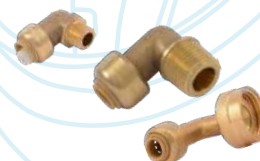
\*Using the disconnect clip, fittings can be easily changed, removed and reused.



PRODUCT DESCRIPTION		PART NUMBER	QTY/BAG
LARGE DIAMETER	1-1/4" X 1-1/4" FNPT (For PEX applications, stiffeners are sold separately)	SB113532F	1
	1-1/2" X 1-1/2" FNPT (For PEX applications, stiffeners are sold separately)	SB114140F	1
	2" X 2" FNPT (For PEX applications, stiffeners are sold separately)	SB115450F	1
<b>MALE CONNECTORS</b>			
1/4" X 1/2" MNPT Reducing		U110LF	6
3/8" (1/2" OD) X 1/2" MNPT Reducing		U118LF	6
1/2" X 3/4" MNPT Reducing		U116LF	6
1/2" X 1/2" MNPT Straight		U120LF	12
3/4" X 3/4" MNPT Straight		U134LF	12
3/4" X 1/2" MNPT Bullnose		U138LF	12
3/4" X 1" MNPT Straight		U139LF	6
1" X 1" MNPT Straight		U140LF	6
1" X 3/4" MNPT Reducing		U142LF	6
LARGE DIAMETER	1-1/4" X 1-1/4" MNPT (For PEX applications, stiffeners are sold separately)	SB113532M	1
	1-1/2" X 1-1/2" MNPT (For PEX applications, stiffeners are sold separately)	SB114140M	1
	2" X 2" MNPT (For PEX applications, stiffeners are sold separately)	SB115450M	1
<b>SLIP MALE CONNECTORS</b>			
1/2" SharkBite Slip Male Adapter		U3120LF	6
3/4" SharkBite Slip Male Adapter		U3134LF	6
1" SharkBite Slip Male Adapter		U3140LF	6
<b>THREADED ADAPTERS</b>			
3/4" CTS X 3/4" FNPT Threaded (CTS end inserts into any 3/4" SB fitting)		U766LF	6
1" CTS X 1" FNPT Threaded (CTS end inserts into any 1" SB fitting)		U772LF	6
<b>90° ELBOWS</b>			
1/4" (3/8" OD) X 1/4" (3/8" OD)		U244LF	6
3/8" (1/2" OD) X 3/8" (1/2" OD)		U246LF	6
1/2" X 1/2"		U248LF	12
3/4" X 3/4"		U256LF	6
1" X 1"		U260LF	6
LARGE DIAMETER	1-1/4" X 1-1/4" (For PEX applications, stiffeners are sold separately)	SB0235	1
	1-1/2" X 1-1/2" (For PEX applications, stiffeners are sold separately)	SB0241	1
	2" X 2" (For PEX applications, stiffeners are sold separately)	SB0254	1
<b>45° ELBOWS</b>			
1/2" x 1/2"		U648LF	12
3/4" x 3/4"		U656LF	6
1" x 1"		U660LF	12
LARGE DIAMETER	1-1/4" X 1-1/4" (For PEX applications, stiffeners are sold separately)	SB0535	1
	1-1/2" X 1-1/2" (For PEX applications, stiffeners are sold separately)	SB0541	1
	2" X 2" (For PEX applications, stiffeners are sold separately)	SB0554	1
<b>45° STREET ELBOWS</b>			
1/2" x 1/2" CTS Tail Adapter (CTS end inserts into any 1/2" SB fitting)		U615LF	6
3/4" x 3/4" CTS Tail Adapter (CTS end inserts into any 3/4" SB fitting)		U620LF	6
LARGE DIAMETER	1-1/4" X 1-1/4" (For PEX applications, stiffeners are sold separately)	SB0735	1
	1-1/2" X 1-1/2" (For PEX applications, stiffeners are sold separately)	SB0741	1
	2" X 2" (For PEX applications, stiffeners are sold separately)	SB0754	1



PRODUCT DESCRIPTION		PART NUMBER	QTY/BAG
<b>FEMALE ELBOWS</b>			
1/2" X 1/2" FNPT		U308LF	6
3/4" X 3/4" FNPT (Utilizes a U766LF thread adapter)		U314LF	3
<b>MALE ELBOWS</b>			
1/2" X 1/2" MNPT		U280LF	6
3/4" X 3/4" MNPT		U286LF	6
<b>REDUCING ELBOWS</b>			
1/2" X 3/8" (1/2" OD)		U272LF	12
3/4" X 1/2"		U274LF	12
1" X 3/4"		U278LF	3
<b>DROP-EAR ELBOWS</b>			
3/8" (1/2" OD) X 1/2" FNPT Drop Ear		U332LF	6
1/2" X 1/2" Drop Ear		U249LF	12
1/2" X 1/2" FNPT Drop Ear		U334LF	6
3/4" X 3/4" FNPT Drop Ear		U340LF	6
<b>HY-EAR ELBOWS</b>			
1/2" X 1/2" Hy-Ear		U335LF	6
<b>DISHWASHER ELBOWS</b>			
1/4" (3/8" OD) X 3/8" MNPT Dishwasher		U276LF	6
1/4" (3/8" OD) X 3/4" Garden Hose Nut		U2276LF	6
1/2" X 3/8" MNPT Dishwasher		U281LF	6
<b>TEES</b>			
1/4" (3/8" OD) X 1/4" (3/8" OD) X 1/4" (3/8" OD)		U358LF	6
3/8" (1/2" OD) X 3/8" (1/2" OD) X 3/8" (1/2" OD)		U360LF	6
1/2" X 1/2" X 1/2"		U362LF	12
3/4" X 3/4" X 3/4"		U370LF	6
1" X 1" X 1"		U374LF	3
LARGE DIAMETER	1-1/4" X 1-1/4" X 1-1/4"	SB0835	1
	1-1/2" X 1-1/2" X 1-1/2"	SB0841	1
	2" X 2" X 2"	SB0854	1
<b>REDUCING TEES</b>			
3/8" (1/2" OD) X 3/8" (1/2" OD) X 1/2" Reducing		U364LF	6
1/2" X 1/2" X 1/4" (3/8" OD) Reducing		U359LF	6
1/2" X 1/2" X 3/8" (1/2" OD) Reducing		U363LF	6
3/4" X 3/4" X 1/2" Reducing		U412LF	6
3/4" X 1/2" X 3/4" Reducing		U444LF	6
3/4" X 1/2" X 1/2" Reducing		U454LF	6
1" X 1" X 3/4" Reducing		U416LF	3





PRODUCT DESCRIPTION		PART NUMBER	QTY/BAG
LARGE DIAMETER	1-1/4" X 1-1/4" X 1/2" Reducing Tee	SB08353516	1
	1-1/4" X 1-1/4" X 3/4" Reducing Tee	SB08353522	1
	1-1/4" X 1-1/4" X 1" Reducing Tee	SB08353528	1
	1-1/2" X 1-1/2" X 3/4" Reducing Tee	SB08414122	1
	1-1/2" X 1-1/2" X 1" Reducing Tee	SB08414128	1
	1-1/2" X 1-1/2" X 1-1/4" Reducing Tee	SB08414135	1
	2" X 2" X 1" Reducing Tee	SB08545428	1
	2" X 2" X 1-1/4" Reducing Tee	SB08545435	1
	2" X 2" X 1-1/2" Reducing Tee	SB08545441	1
<b>FEMALE CENTER TEES</b>			
3/4" X 3/4" X 3/4" FNPT		U462LF	3
1" X 1" X 1" FNPT		U464LF	3
<b>SLIP TEES (SLIP END ONLY SUITABLE FOR COPPER AND CPVC)</b>			
1/2" X 1/2" X 1/2"		U3362LF	3
3/4" X 3/4" X 3/4"		U3370LF	3
LARGE DIAMETER	1-1/4" X 1-1/4" (For PEX applications, stiffeners are sold separately)	SB0335	1
	1-1/2" X 1-1/2" (For PEX applications, stiffeners are sold separately)	SB0341	1
	2" X 2" (For PEX applications, stiffeners are sold separately)	SB0354	1
<b>FEMALE CENTER SLIP TEES (SLIP END ONLY SUITABLE FOR COPPER AND CPVC)</b>			
1/2" X 1/2" X 1/2" FNPT Female Center		U3482LF	3
3/4" X 3/4" X 3/4" FNPT Female Center		U3486LF	3
<b>SERVICE SLIP TEE ADAPTER (SLIP END ONLY SUITABLE FOR COPPER AND CPVC)</b>			
1/2" X 1/2" X 1/2" CTS Tail Adapter Service Line Tee (CTS end inserts into any 1/2" SB fitting)		U4482LF	6
<b>REDUCING SLIP TEES (ONLY SUITABLE FOR COPPER AND CPVC-MIDDLE BRANCH MAY BE USED WITH PEX)</b>			
LARGE DIAMETER	1-1/4" X 1-1/4" X 1/2" Reducing (For PEX applications, stiffeners are sold separately)	SB03353516	1
	1-1/4" X 1-1/4" X 3/4" Reducing (For PEX applications, stiffeners are sold separately)	SB03353522	1
	1-1/4" X 1-1/4" X 1" Reducing (For PEX applications, stiffeners are sold separately)	SB03353528	1
	1-1/2" X 1-1/2" X 3/4" Reducing (For PEX applications, stiffeners are sold separately)	SB03414122	1
	1-1/2" X 1-1/2" X 1" Reducing (For PEX applications, stiffeners are sold separately)	SB03414128	1
	1-1/2" X 1-1/2" X 1-1/4" Reducing (For PEX applications, stiffeners are sold separately)	SB03414135	1
	2" X 2" X 1" Reducing (For PEX applications, stiffeners are sold separately)	SB03545428	1
	2" X 2" X 1-1/4" Reducing (For PEX applications, stiffeners are sold separately)	SB03545435	1
	2" X 2" X 1-1/2" Reducing (For PEX applications, stiffeners are sold separately)	SB03545441	1
<b>END CAPS</b>			
3/8" (1/2" OD)		U512LF	6
1/2"		U514LF	12
3/4"		U518LF	6
1"		U520LF	6
LARGE DIAMETER	1-1/4" (For PEX applications, stiffeners are sold separately)	SB0435	1
	1-1/2" (For PEX applications, stiffeners are sold separately)	SB0441	1
	2" (For PEX applications, stiffeners are sold separately)	SB0454	1
<b>FITTING REDUCERS (USE TO CONNECT TO SMALLER PIPE SIZES)</b>			
3/8" (1/2" OD) X 1/2" CTS (CTS end inserts into any 1/2" SB fitting)		U719LF	6
3/8" (1/2" OD) X 3/4" CTS (CTS end inserts into any 3/4" SB fitting)		U721LF	6
1/2" X 1" CTS (CTS end inserts into any 1" SB fitting)		U722LF	6
3/4" X 1" CTS (CTS end inserts into any 1" SB fitting)		U724LF	6



PRODUCT DESCRIPTION	PART NUMBER	QTY/BAG
<b>WATER SOFTENER FITTING</b>		
3/4" X 1" FIP	U086LF	12



<b>1-B: RADIANT FITTINGS</b>		
<b>RADIANT FITTINGS (NON-POTABLE WATER APPLICATION)</b>		
5/8" X 5/8" Coupling	U012	6
3/4" X 5/8" Reducing Coupling	U057	6
5/8" X 3/4" MNPT Reducing Adapter	U126	6
5/8" X 5/8" Elbow	U252	6
3/4" X 5/8" Elbow	U273	6
5/8" X 5/8" X 5/8" Tee	U366	6
5/8" End Stop	U516	6



<b>1-C: TRANSITION FITTINGS</b>		
<b>POLYBUTYLENE TRANSITION COUPLINGS</b>		
1/2" PB X 1/2" SB PB Transition Coupling	U4008LF	6
3/4" PB X 3/4" SB PB Transition Coupling	U4016LF	6
<b>PVC TRANSITION COUPLINGS</b>		
1/2" CTS X 1/2" PVC Transition Coupling	UIP4008	6
3/4" CTS X 3/4" PVC Transition Coupling	UIP4016	6
1" CTS X 1" PVC Transition Coupling	UIP4020	3
<b>PVC TRANSITION SLIP TEES</b>		
1/2" CTS X 1/2" CTS X 1/2" PVC Transition Slip Tee	UIP363	3
1/2" PVC X 1/2" PVC X 1/2" CTS Transition Slip Tee	UIP364	3
3/4" CTS X 3/4" CTS X 3/4" PVC Transition Slip Tee	UIP371	3
3/4" PVC X 3/4" PVC X 3/4" CTS Transition Slip Tee	UIP372	3
1" CTS X 1" CTS X 1" PVC Transition Slip Tee	UIP375	3
1" PVC X 1" PVC X 1" CTS Transition Slip Tee	UIP376	3
<b>PVC SLIP COUPLINGS</b>		
1/2" PVC X 1/2" PVC Slip Repair Coupling	UIP3008	3
3/4" PVC X 3/4" PVC Slip Repair Coupling	UIP3016	3
1" PVC X 1" PVC Slip Repair Coupling	UIP3020	2
<b>PVC MALE CONNECTORS</b>		
1/2" PVC X 1/2" MNPT Male Connector	UIP120	6
3/4" PVC X 3/4" MNPT Male Connector	UIP134	6
1" PVC X 1" MNPT Male Connector	UIP140	3
<b>PVC END CAPS</b>		
1/2" SharkBite PVC Cap	UIP514	12
3/4" SharkBite PVC Cap	UIP518	12
1" SharkBite PVC Cap	UIP520	12
<b>PVC DEPTH GAUGE AND DISCONNECT CLIPS</b>		
1/2" PVC Depth Gauge and Disconnect Clip	UIP710	12
3/4" PVC Depth Gauge and Disconnect Clip	UIP712	12
1" PVC Depth Gauge and Disconnect Clip	UIP714	6





PRODUCT DESCRIPTION	PART NUMBER	QTY/BAG
<b>1-D: FIRE FITTINGS **</b> ONLY SUITABLE FOR USE WITH SHARKBITE PEX PIPE **NOT AVAILABLE IN CANADA.		
<b>FIRE HORIZONTAL TEES</b>		
3/4" x 3/4" SB x 1/2" FNPT	UF12128H	3
1" x 3/4" SB x 1/2" FNPT	UF16128H	3
1" x 1" SB x 1/2" FNPT	UF16168H	3
<b>FIRE VERTICAL TEES</b>		
3/4" x 3/4" SB x 1/2" FNPT	UF12128V	3
1" x 3/4" SB x 1/2" FNPT	UF16128V	3
1" x 1" SB x 1/2" FNPT	UF16168V	3
<b>FIRE DROP-EAR ELBOWS</b>		
3/4" SB x 1/2" FNPT	UF128U	3
1" SB X 1/2" FNPT	UF168U	3
<b>FIRE THREADED FEMALE ADAPTERS</b>		
3/4" SB X 1/2" FNPT	UF128S	3
<b>FIRE ANGLED ADAPTERS</b>		
3/4" X 3/4" SB X 1/2" FNPT	UF12128A	3
<b>FIRE FEMALE ELBOWS</b>		
3/4" SB X 1/2" FNPT Left	UF128L	3
3/4" SB X 1/2" FNPT Right	UF128R	3
1" SB X 1/2" FNPT Left	UF168L	3
1" SB X 1/2" FNPT Right	UF168R	3

1-E: FLEX HOSES		
<b>BRAIDED FLEXIBLE WATER HEATER CONNECTORS</b>		
1/2" X 3/4" FNPT, 12" Stainless Steel Braided Water Heater Connector Lead Free - Available July 2018	U3568FX12LFCA	12
1/2" X 3/4" FIP, 12" Stainless Steel Braided Water Heater Connector Lead Free - Discontinued July 2018	U3068FX12LFCA	12
1/2" X 3/4" FIP, 15" Stainless Steel Braided Water Heater Connector	U3068FX15LFCA	12
1/2" X 3/4" FNPT, 18" Stainless Steel Braided Water Heater Connector Lead Free - Available July 2018	U3568FX18LFCA	12
1/2" X 3/4" FIP, 18" Stainless Steel Braided Water Heater Connector Lead Free - Discontinued July 2018	U3068FX18LFCA	12
1/2" X 3/4" FIP, 24" Stainless Steel Braided Water Heater Connector	U3068FX24LFCA	12
3/4" X 3/4" FNPT, 12" Stainless Steel Braided Water Heater Connector Lead Free - Available July 2018	U3588FX12LFCA	12
3/4" X 3/4" FIP, 12" Stainless Steel Braided Water Heater Connector Lead Free - Discontinued July 2018	U3088FX12LFCA	12
3/4" X 3/4" FIP, 15" Stainless Steel Braided Water Heater Connector	U3088FX15LFCA	12
3/4" X 3/4" FNPT, 18" Stainless Steel Braided Water Heater Connector Lead Free - Available July 2018	U3588FX18LFCA	12
3/4" X 3/4" FIP, 18" Stainless Steel Braided Water Heater Connector Lead Free - Discontinued July 2018	U3088FX18LFCA	12
3/4" X 3/4" FNPT, 24" Stainless Steel Braided Water Heater Connector Lead Free - Available July 2018	U3588FX24LFCA	12
3/4" X 3/4" FIP, 24" Stainless Steel Braided Water Heater Connector Lead Free - Discontinued July 2018	U3088FX24LFCA	12
<b>CORRUGATED STAINLESS STEEL WATER HEATER CONNECTORS</b>		
3/4" X 3/4" FIP, 18" Stainless Steel Corrugated Water Heater Connector	SS3088FLEX18LF	12
3/4" X 3/4" FIP, 24" Stainless Steel Corrugated Water Heater Connector	SS3088FLEX24LF	12
3/4" x 1" FIP, 24" Stainless Steel Corrugated Water Heater Connector	SS3086FLEX24LF	6
<b>BRAIDED FLEXIBLE WATER HEATER CONNECTORS WITH BALL VALVES</b>		
1/2" X 3/4" FNPT, 18" Stainless Steel Braided Water Heater Connector with Ball Valve Lead Free - Available July 2018	U3568FX18BLCA	12

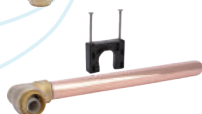
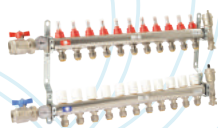
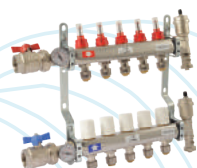
PRODUCT DESCRIPTION	PART NUMBER	QTY/BAG
3/4" X 3/4" FNPT, 18" Stainless Steel Braided Water Heater Connector with Ball Valve Lead Free - Available July 2018	U3588FX18BLCA	12
1/2" X 3/4" FIP, 18" Stainless Steel Braided Water Heater Connector with Ball Valve	U3068FX18BLCA	12
3/4" X 3/4" FIP, 18" Stainless Steel Braided Water Heater Connector with Ball Valve	U3088FX18BLCA	12
<b>CORRUGATED STAINLESS STEEL WATER HEATER CONNECTORS WITH BALL VALVES</b>		
1/2" X 3/4" FIP, 18" Stainless Steel Corrugated Water Heater Connector with Ball Valve	SS3068FLEX18BV	12
3/4" X 3/4" FIP, 18" Stainless Steel Corrugated Water Heater Connector with Ball Valve	SS3088FLEX18BV	12
<b>WATER HEATER KITS</b>		
SharkBite Corrugated Stainless Steel Water Heater Connection Kit (contains one 3/4" FIP x 3/4" SB x 18" hose and one 3/4" FIP x 3/4" SB ball valve x 18" hose)	24680	3
<b>BRAIDED FLEXIBLE COUPLING HOSES</b>		
1/2" X 1/2", 18"	U3008FX18LFCA	12
3/4" X 3/4", 18"	U3016FX18LFCA	12
<b>BRAIDED WATER SOFTENER HOSES</b>		
3/4" X 1" FIP, 24"	U3086FLEX24LF	6

**1-F: STOPS & FIXTURE SUPPLY FITTINGS**

<b>ANGLE STOPS</b>		
1/2" X 3/8" Compression Angle Stop	23036LFCA	12
1/2" X 3/8" Compression Loose Key	24731LF	6
1/2" X 1/4" (3/8" OD) Angle Stop	23048LFCA	6
1/2" X 1/4" (3/8" OD) Loose Key	24733LF	6
1/2" X 1/4" Compression Angle Stop	23336LFCA	6
1/2" X 1/2" Compression Angle Stop	23489	6
<b>STRAIGHT STOPS</b>		
1/2" X 3/8" Compression Straight Stop	23037LFCA	12
1/2" X 3/8" Compression Loose Key	24732LF	6
1/2" X 1/4" (3/8" OD) Straight Stop	23049LFCA	6
1/2" X 1/4" (3/8" OD) Loose Key	24734LF	6
1/2" X 1/4" Compression Straight Stop	23337LFCA	6
1/2" X 1/2" Compression Straight Stop	23490	6
<b>TEE STOPS</b>		
1/2" X 1/2" X 1/4" Compression	24983	6
1/2" X 1/2" X 3/8" Compression	24984	6
3/4" X 3/4" X 1/4" Compression	24985	6
3/4" X 3/4" X 3/8" Compression	24986	6
1/2" X 1/2" X 1/4" (3/8" OD) SB	24987	6
<b>DUAL OUTLET STOP</b>		
1/2" Angle Stop x 3/8" x 3/8" OD Comp Dual Outlet Stop	25558LF	6
<b>DUAL TEE STOP VALVE ADAPTERS</b>		
1/2" CTS X 1/2" CTS X 1/2" Dual Tee Stop Valve Adapter (CTS ends insert into any 1/2" SB fitting. Recommended use with Angle/Straight Stops.)	U782LF	6
<b>STOP VALVE CONNECTORS</b>		
1/4" (3/8" OD) X 3/8" Compression Stop Valve Connector (Converts 3/8" comp stop to SharkBite)	U3523LF	6
1/4" (3/8" OD) X 1/4" Compression Nut	U3524LF	6







PRODUCT DESCRIPTION	PART NUMBER	QTY/BAG
<b>STOP VALVE TEE ADAPTERS</b>		
1/4" (3/8" OD) X 1/4" (3/8" OD) X 3/8" Compression Stop Valve Tee Adaptor	U3358LF	6
1/4" (3/8" OD) X 1/4" (3/8" OD) X 1/4" (3/8" OD) Tube Stop Valve Tee Adapter	U4358LF	6
<b>FAUCET CONNECTORS</b>		
1/4" (3/8" OD) X 1/2" Threaded Faucet Connector	U3525LF	6
<b>TOILET CONNECTORS</b>		
1/4" (3/8" OD) X 7/8" Ballcock Threads Toilet Connector	U3531LF	6
1/4" (3/8" OD) X 7/8" Ballcock Threads Toilet Elbow	U3537LF	6
<b>ANGLE STOP SUPPLY LINES</b>		
1/2" SharkBite X 7/8" Click Seal® Toilet Connector X 12"	24656	6
1/2" SharkBite X 1/2" Click Seal® Faucet Connector X 20"	24657	6

### 1-G: ADDITIONAL PRODUCTS

#### MANIFOLDS WITH PUSH-TO-CONNECT BRANCHES

Manifold Bracket Set (for 1"-1.5" diameter manifolds)	25484Z	1
SharkBite 3/4" x 1/2" Outlet 3-Port Manifold - Closed	25553LF	3
SharkBite 3/4" x 1/2" Outlet 3-Port Manifold - Open	25552LF	3
SharkBite 3/4" x 1/2" Outlet 4-Port Manifold - Closed	25555LF	3
SharkBite 3/4" x 1/2" Outlet 4-Port Manifold - Open	25554LF	3

#### RADIANT HEATING MANIFOLDS (1" FNPT X 1/2" SHARKBITE PEX LOOPS)

3 Port	24930	1
4 Port	24931	1
5 Port	24932	1
6 Port	24933	1
7 Port	24934	1
8 Port	24935	1
9 Port	24936	1
10 Port	24937	1
11 Port	24938	1
12 Port	24939	1
13 Port	24940	1

#### SHARKBITE RADIANT MANIFOLD ACTUATORS (4-WIRE, WITH END SWITCH)

SharkBite Radiant Manifold Actuator	24963	1
-------------------------------------	-------	---

**WATER HAMMER ARRESTORS** (PROVIDES MAINTENANCE-FREE, CONTINUOUS PROTECTION AGAINST WATER HAMMER. CAN BE POSITIONED VERTICALLY OR HORIZONTALLY AND THE SHARKBITE CONNECTORS ALLOW THE ARRESTOR TO BE INSTALLED IN SECONDS, EVEN ON WET PIPE.)

1/2" Residential	22630LF	1
1/2" Commercial	22631LF	1
3/4" Residential	22632LF	1
1" Commercial	22633LF	1

#### STUB OUT ELBOWS

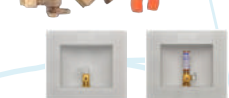
1/2" SB X 1/2" Copper Tube 8" Length	U351LFCA	6
--------------------------------------	----------	---

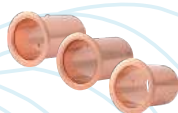
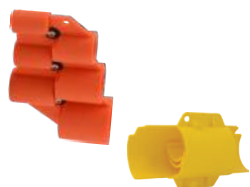
#### PRESSURE GAUGES

1/2" SB Tee with Pressure Gauge	24436	1
3/4" SB Tee with Pressure Gauge	24438	1
1" SB Tee with Pressure Gauge	24440	1

PRODUCT DESCRIPTION	PART NUMBER	QTY/BAG
1/2" CTS Pressure Gauge (inserts into any 1/2" SB fitting)	24442	1
3/4" CTS Pressure Gauge (inserts into any 3/4" SB fitting)	24444	1
<b>TEMPERATURE GAUGES</b>		
1/2" SB Tee with Temperature Gauge	24437	1
3/4" SB Tee with Temperature Gauge	24439	1
1" SB Tee with Temperature Gauge	24441	1
1/2" CTS Temperature Gauge (inserts into any 1/2" SB fitting)	24443	1
3/4" CTS Temperature Gauge (inserts into any 3/4" SB fitting)	24445	1

<b>1-H: KITS</b>		
<b>WATER HEATER INSTALLATION KITS</b> (KITS INCLUDE 2 SHARKBITE CONNECTOR FITTINGS AND A DISCONNECT CLIP)		
1/2" X 3/4" FNPT	22604LF	12
3/4" X 3/4" FNPT	22441LF	12
<b>CONTRACTOR KITS</b> (KIT INCLUDES TOOLBOX)		
Contractor Kit: 2 each (U008LF, U016LF, U058LF, U072LF, U088LF, U120LF, U134LF, U248LF, U256LF) and 1 each (U362LF, U370LF, U514LF, U518LF, U710, U711, U713 and U702)	22486LF	1
Contractor Tool Box Only	U3001A	1
<b>FAUCET KIT IN BAGGED PACKAGING</b> (FAUCET KITS COME WITH 2 FAUCET CONNECTORS, 2 ANGLE STOPS, AND 1 COIL OF 10' 1/4" WHITE PEX PIPE)		
Faucet Connector with Angle Stop	25087	3
Faucet Connector with Straight Stop	25538	3
<b>TOILET KIT IN BAGGED PACKAGING</b> (TOILET KITS COME WITH 1 TOILET CONNECTOR, 1 ANGLE STOP, AND 1 COIL OF 5' 1/4" WHITE PEX PIPE.)		
Toilet Connector with Angle Stop	25088	6
Toilet Connector with Straight Stop	25539	3
<b>ICE MAKER KIT IN BAGGED PACKAGING</b> (ICE MAKER KITS COME WITH 1 SERVICE SLIP TEE, 1 ANGLE STOP, 1 VALVE CONNECTOR, 10' 1/4" WHITE PEX PIPE)		
Ice Maker Connector with Angle Stop	25024	1
<b>WATER FILTER INSTALLATION KITS</b>		
3/4" SharkBite Water Filter Installation Kit	25561	6
1" SharkBite Water Filter Installation Kit	25562	6
<b>DISHWASHER INSTALLATION KIT IN BAGGED PACKAGING</b>		
Dishwasher Installation Kit	25568	3
<b>SHOWER/TUB INSTALLATION KIT IN BAGGED PACKAGING</b>		
KIT Contains 2 Drop Ear Elbows, 2 Female Connectors, 2 Female Elbows and 1 Disconnect Clip	25567	3
<b>ICE MAKER OUTLET BOX KIT</b>		
1/2" SB X 1/4" Compression Ice Maker Outlet Box	25096	1
1/2" SB X 1/4" Compression Ice Maker Outlet Box with Water Hammer Arrestor	25097	1
<b>WASHING MACHINE OUTLET BOX KIT</b>		
1/2" SB X 3/4" MHT Washing Machine Outlet Box	25098	1
1/2" SB X 3/4" MHT Washing Machine Outlet Box with Water Hammer Arrestor	25099	1
<b>WASHING MACHINE VALVES</b>		
1/2" SharkBite X 3/4" MHT Washing Machine Angle Valve	25559LF	6
1/2" SharkBite X 3/4" MHT Washing Machine Straight Valve	25560LF	6





PRODUCT DESCRIPTION		PART NUMBER	QTY/BAG
<b>1-I: TOOLS</b>			
<b>DEBURR &amp; GAUGE TOOLS</b>			
Debur and Gauge Tool (Use for 1/4", 3/8", 1/2", 5/8", 3/4" and 1" copper and CPVC pipe)		U702	1
<b>LARGE DIAMETER</b>	1-1/4", 1-1/2", 2" Debur and Gauge Tool	SBG03	1
<b>DISCONNECT CLIPS</b>			
1/4" Disconnect Clip		U706	12
3/8" Disconnect Clip		U708	24
1/2" Disconnect Clip		U710	24
5/8" Disconnect Clip		U3712	24
3/4" Disconnect Clip		U712	24
1" Disconnect Clip		U714	12
<b>DISCONNECT TONGS</b>			
1/2" Disconnect Tong		U711	1
3/4" Disconnect Tong		U713	1
1" Disconnect Tong		U715	1
<b>DE-MOUNT CLIPS</b>			
<b>LARGE DIAMETER</b>	1-1/4" De-Mount Clip	SBDC35	1
	1-1/2" De-Mount Clip	SBDC41	1
	2" De-Mount Clip	SBDC54	1
	1-1/4", 1-1/2", 2" De-Mount Clip Set	SBDC354154	1
<b>LARGE DIAMETER PEX STIFFENERS</b>			
<b>LARGE DIAMETER</b>	1-1/4" PEX Stiffener	SBTL35	1
	1-1/2" PEX Stiffener	SBTL41	1
	2" PEX Stiffener	SBTL54	1
<b>WRAP FOR FITTING BURIAL</b>			
10' x 2" X 0.02" Silicone Wrap		25406	1

## SECTION 2: SHARKBITE VALVES

### 2-A: PRESSURE REGULATING VALVES

#### EB45 LEAD FREE SHARKBITE CONNECTIONS (ALL EB45 VALVES FACTORY SET AT 45 PSI UNLESS SPECIFIED)

1/2" EB45-DSB Direct SharkBite	23807-0045	1
1/2" EB45-SDSB Slip Feature Direct SharkBite	24383-0045	1
1/2" EB45-DUSB Double Union SharkBite	23893-0045	1
3/4" EB45-DSB Direct SharkBite	23808-0045	1
3/4" EB45-SDSB Slip Feature Direct SharkBite	24384-0045	1
3/4" EB45-DUSB Double Union SharkBite	23894-0045	1
3/4" EB45 Double Union SharkBite (60 psi setting)	23896-0060	1
3/4" EB45-DUSB Double Union SharkBite with Gauge Port	24449-0045	1
1" EB45-DSB Direct SharkBite	22675-0045	1
1" EB45-DUSB Double Union SharkBite	23358-0045	1
1" EB45-DUSB Double Union SharkBite (60 psi setting)	23945-0060	1
1" EB45-DUSB Double Union SharkBite with Gauge Connection	24453-0045	1



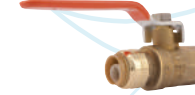
PRODUCT DESCRIPTION	PART NUMBER	QTY/BAG
<b>EB25 LEAD FREE SHARKBITE CONNECTIONS</b>		
3/4" EB25-DUSB Double Union SharkBite	23955-0045	1
1" EB25-DUSB Double Union SharkBite	23956-0045	1
<b>A-89 BOILER FEED VALVES</b>		
1/2" A-89 Direct SharkBite	25521Z	1



<b>2-B: THERMOSTATIC MIXING VALVES</b>		
<b>HG110-D LEAD FREE</b> (ASSE 1017, 1069, & 1070, CSA B 125.3. DISTRIBUTION AND IN-LINE)		
1/2" HG110-D with Integrated SharkBite Connections and Integral Checks	24548	1
3/4" HG110-D with Integrated SharkBite Connections and Integral Checks	24549	1
1/2" HG110-D with SharkBite Union Connections	24504	1
3/4" HG110-D with SharkBite Union Connections	24505	1
<b>HG160 LEAD FREE</b> (ASSE 1069 & 1070, CSA B 125.3. IN-LINE)		
1/2" HG160 with SharkBite Connections	24529	1
3/4" HG160 with SharkBite Connections	24530	1
<b>HG110-HX</b>		
3/4" HG110-HX with SharkBite Connections and Integral Checks	24867	1



2-C: BALL VALVES			
BALL VALVES			
1/2" X 1/2"		22222LFCA	12
3/4" X 3/4"		22185LFCA	12
1" X 1"		22223LFCA	6
1/2" SharkBite X 1/2" FNPT		22182LFCA	6
3/4" SharkBite X 3/4" FNPT		22186LFCA	6
1" SharkBite X 1" FNPT		22187LFCA	3
LARGE DIAMETER	SharkBite 1-1/4" Ball Valve	SBBV35	1
	SharkBite 1-1/2" Ball Valve	SBBV41	1
	SharkBite 2" Ball Valve	SBBV54	1
BALL VALVES WITH DRAIN / VENT			
1/2" with Drain		22304LFCA	12
3/4" with Drain		22305LFCA	12
1" with Drain		22306LFCA	6
BALL VALVE WITH DRAIN / VENT AND MOUNTING BRACKET			
1/2" with Drain/Vent and Mounting Bracket		24615LFCA	12
3/4" with Drain/Vent and Mounting Bracket		24616LFCA	6
1" with Drain/Vent and Mounting Bracket		24617LFCA	6
SLIP BALL VALVE (ONLY SUITABLE FOR COPPER AND CPVC)			
1/2"		24735LF	6
3/4"		24736LF	6
1"		24737LF	3



<b>2-D: PVC BALL VALVES</b>		
<b>PVC BALL VALVE</b>		
3/4" PVC X 3/4" CTS SharkBite Ball Valve	25550LF	6
1" PVC X 3/4" CTS SharkBite Ball Valve	25551LF	6



PRODUCT DESCRIPTION	PART NUMBER	QTY/BAG
<b>2-E: CHECK VALVES</b>		
<b>CHECK VALVES</b>		
1/2" X 1/2"	U2008-0000LF	6
3/4" X 3/4"	U2016-0000LF	6
1" X 1"	U2020-0000LF	3
<b>DUAL CHECK VALVES (ASSE 1024 &amp; CSA B64.6)</b>		
3/4" BFI, Dual Check, SharkBite Inlet & Outlet	BF13434SB	1
1" BFI, Dual Check, SharkBite Inlet & Outlet	BF10101SB	1
1" X 3/4" BF5, Dual Check, Meter Swivel Nut Inlet, SharkBite Outlet	BF5M0134SB	1
1-1/4" X 1" BF5, Dual Check, Meter Swivel Nut Inlet, SharkBite Outlet	BF5M1401SB	1

<b>2-F: GENERAL SUPPLY VALVES</b>		
<b>STOP VALVE WITH DRAIN</b>		
3/4" x 3/4" Push-to-Connect Stop Valve with Drain	24635LF	12
1/2" x 1/2" Push-to-Connect Stop Valve with Drain	24634LF	12
<b>GARDEN VALVES</b>		
1/2" x 3/4" MHT	24622LF	6
3/4" x 3/4" MHT	24623LF	6
<b>HOSE BIBBS</b>		
1/2" Push-to-Connect x 3/4" MHT 90 Deg Hose Bibb – Quarter Turn	24620LF	6
3/4" Push-to-Connect x 3/4" MHT 90 Deg Hose Bibb – Quarter-Turn	24621LF	6
1/2" Push-to-Connect x 3/4" MHT 90 Deg Hose Bibb – Multi-Turn	24626LF	6
3/4" Push-to-Connect x 3/4" MHT 90 Deg Hose Bibb - Multi-Turn	24627LF	6
3/4" Push-to-Connect x 3/4" MHT No-Kink 45 Deg Hose Bibb - Multi-Turn	24633LF	6
1/2" Push-to-Connect x 3/4" MHT No-Kink 45 Deg Hose Bibb – Multi-Turn	24632LF	6
3/4" Push-to-Connect x 3/4" MHT No-Kink 45 Deg Hose Bibb – Quarter-Turn	24631LF	6
1/2" Push-to-Connect x 3/4" MHT No-Kink 45 Deg Hose Bibb – Quarter Turn	24630LF	6
<b>ANTI-SIPHON FROST-FREE SILLCOCKS</b>		
1/2" Push-to-Connect x 3/4" MHT 18" Anti-Siphon Frost-Free Sillcock	24638LF	4
1/2" Push-to-Connect x 3/4" MHT 15" Anti-Siphon Frost-Free Sillcock	24637LF	4
1/2" Push-to-Connect x 3/4" MHT 12" Anti-Siphon Frost-Free Sillcock	24636LF	4
1/2" Push-to-Connect x 3/4" MHT 10" Anti-Siphon Frost-Free Sillcock	24629LF	4
1/2" Push-to-Connect x 3/4" MHT 8" Anti-Siphon Frost-Free Sillcock	24628LF	4

## SECTION 3: SHARKBITE PEX BARB FITTINGS

### 3-A: PEX BARB CORE FITTINGS

<b>COUPLINGS BULK PACKAGED</b>			
3/8"		UC006LF	10
1/2"		UC008LF	25
5/8"		UC012LF	10
3/4"		UC016LF	25
1"		UC020LF	10
LARGE DIAMETER	1-1/4" Barb	UC0135	20
	1-1/2" Barb	UC0141	20
	2" Barb	UC0154	15

PRODUCT DESCRIPTION		PART NUMBER	QTY/BAG
<b>REDUCING COUPLINGS BULK PACKAGED</b>			
3/8" X 1/2" Reducing		UC009LF	10
1/2" X 3/4" Reducing		UC058LF	25
3/4" X 5/8" Reducing		UC057LF	10
3/4" X 1" Reducing		UC060LF	25
LARGE DIAMETER	1-1/4" x 3/4"	UC013522	20
	1-1/4" x 1"	UC013528	20
	1-1/2" x 3/4"	UC014122	15
	1-1/2" x 1"	UC014128	15
	1-1/2" x 1-1/4"	UC014135	20
	2" x 1-1/2"	UC015441	20
<b>THREADED FEMALE ADAPTERS BULK PACKAGED</b>			
1/2" X 3/4" FNPT		UC068LF	25
1/2" X 1/2" FNPT		UC072LF	25
3/4" X 3/4" FNPT		UC088LF	25
1" X 1" FNPT		UC094LF	10
<b>THREADED MALE ADAPTERS BULK PACKAGED</b>			
1/2" X 3/4" MNPT		UC116LF	25
3/8" X 1/2" MNPT		UC118LF	10
1/2" X 1/2" MNPT		UC120LF	25
3/4" X 3/4" MNPT		UC134LF	25
3/4" X 1/2" MNPT		UC138LF	25
3/4" X 1" MNPT		UC139LF	10
1" X 1" MNPT		UC140LF	10
1" X 3/4" MNPT		UC142LF	10
<b>SWEAT FEMALE ADAPTERS BULK PACKAGED</b>			
1/2" X 1/2" Female Sweat Adapter		UC600LF	25
3/4" X 3/4" Female Sweat Adapter		UC606LF	25
1" X 1" Female Sweat Adapter		UC605LF	10
<b>SWEAT MALE ADAPTERS BULK PACKAGED</b>			
1/2" X 1/2" Male Sweat Adapter		UC607LF	25
3/4" X 3/4" Male Sweat Adapter		UC608LF	25
<b>ELBOWS BULK PACKAGED</b>			
3/8" X 3/8"		UC246LF	10
1/2" X 1/2"		UC248LF	25
3/4" X 3/4"		UC256LF	25
1" X 1"		UC260LF	10
LARGE DIAMETER	1-1/4" x 1-1/4"	UC0235	10
	1-1/2" x 1-1/2"	UC0241	10
	2" x 2"	UC0254	10
<b>REDUCING ELBOWS BULK PACKAGED</b>			
1/2" X 3/8"		UC272LF	10
1/2" X 3/4"		UC274LF	25







PRODUCT DESCRIPTION		PART NUMBER	QTY/BAG
<b>DROP-EAR ELBOWS BULK PACKAGED</b>			
1/2" X 1/2" FNPT Drop Ear		UC334LF	25
3/4" X 3/4" FNPT Drop Ear		UC340LF	25
3/4" X 1/2" FNPT Drop Ear		UC342LF	25
<b>ADAPTER ELBOWS BULK PACKAGED</b>			
1/2" X 1/2" MNPT		UC280LF	25
1/2" X 3/4" MNPT		UC278LF	25
3/4" X 3/4" MNPT		UC286LF	25
3/4" X 3/4" Female Sweat		UC626LF	25
3/4" X 3/4" Male Sweat		UC628LF	25
<b>TEES BULK PACKAGED</b>			
3/8" X 3/8" X 3/8"		UC360LF	10
1/2" X 1/2" X 1/2"		UC362LF	25
3/4" X 3/4" X 3/4"		UC370LF	25
1" X 1" X 1"		UC374LF	10
LARGE DIAMETER	1-1/4"	UC0835	10
	1-1/2"	UC0841	5
	2"	UC0854	5
<b>BULLNOSE TEES BULK PACKAGED</b>			
1/2" X 1/2" X 3/4" Bull Nose		UC408LF	25
3/4" X 3/4" X 1" Bull Nose		UC413LF	10
<b>REDUCING TEES BULK PACKAGED</b>			
3/8" X 3/8" X 1/2" Reducing		UC364LF	10
1/2" X 3/8" X 3/8" Reducing		UC452LF	10
1/2" X 1/2" X 3/8" Reducing		UC363LF	10
1/2" X 3/8" X 1/2" Reducing		UC434LF	10
3/4" X 3/4" X 3/8" Reducing		UC417LF	10
3/4" X 3/4" X 1/2" Reducing		UC412LF	25
3/4" X 1/2" X 1/2" Reducing		UC454LF	25
3/4" X 1/2" X 3/4" Reducing		UC444LF	25
1" X 3/4" X 3/4" Reducing		UC414LF	10
1" X 1" X 1/2" Reducing		UC415LF	10
1" X 1" X 3/4" Reducing		UC416LF	10
1" X 3/4" X 1" Reducing		UC418LF	10

PRODUCT DESCRIPTION		PART NUMBER	QTY/BAG
LARGE DIAMETER	1-1/4" x 1" x 1"	UC08352828	10
	1-1/4" x 1-1/4" x 1/2"	UC08353516	10
	1-1/4" x 1-1/4" x 3/4"	UC08353522	10
	1-1/4" x 1-1/4" x 1"	UC08353528	10
	1-1/2" x 1-1/4" x 1"	UC08413528	5
	1-1/2" x 1-1/2" x 1/2"	UC08414116	5
	1-1/2" x 1-1/2" x 3/4"	UC08414122	10
	1-1/2" x 1-1/2" x 1"	UC08414128	5
	1-1/2" x 1-1/2" x 1-1/4"	UC08414135	5
	2" x 2" x 1/2"	UC08545416	5
	2" x 2" x 3/4"	UC08545422	5
	2" x 2" x 1"	UC08545428	5
	2" x 2" x 1-1/2"	UC08545441	5
<b>SWIVEL ADAPTERS BULK PACKAGED</b>			
3/8" X 3/8" FNPT Swivel Adapter		UC527LF	10
1/2" X 1/2" FNPT Swivel Adapter		UC526LF	25
1/2" X 3/4" FNPT Swivel Adapter		UC534LF	25
3/4" X 3/4" FNPT Swivel Adapter		UC530LF	25
3/4" X 1" Swivel Adapter		UC529LF	10
1" X 1" FNPT Swivel Adapter		UC594LF	10
<b>SWIVEL ELBOWS BULK PACKAGED</b>			
3/8" X 1/2" MNPT Swivel Elbow		UC531LF	10
1/2" X 1/2" FNPT Swivel Elbow		UC532LF	25
<b>SWIVEL TOILET CONNECTION ELBOWS BULK PACKAGED</b>			
1/2" X 7/8" Straight Swivel Toilet Connectors		UC528LF	10
3/8" X 7/8" Elbow Swivel Toilet Connectors		23068LF	6
1/2" X 7/8" Elbow Swivel Toilet Connectors		23067LF	6
<b>PLUGS BULK PACKAGED</b>			
3/8"		UC512LF	10
1/2"		UC514LF	25
3/4"		UC518LF	25
1"		UC520LF	10
LARGE DIAMETER	1-1/4"	UC0435	40
	1-1/2"	UC0441	30
	2"	UC0454	20

**3-B: PEX BARB TRANSITION FITTINGS****POLYBUTYLENE TRANSITION FITTINGS BULK PACKAGED (WITH PB CRIMP RING)**

3/8" PB Coupling	UC4006LF	10
1/2" PB Coupling	UC4008LF	25
3/4" PB Coupling	UC4016LF	25





PRODUCT DESCRIPTION	PART NUMBER	QTY/BAG
<b>3-C: PEX BARB POLY ALLOY FITTINGS</b>		
<b>COUPLINGS BULK PACKAGED</b>		
1/2" Straight Coupling	UP008	25
3/4" Straight Coupling	UP016	25
1" Straight Coupling	UP020	25
<b>REDUCING COUPLINGS BULK PACKAGED</b>		
3/4" X 1/2" Reducing Coupling	UP058	25
1" X 3/4" Reducing Coupling	UP060	25
<b>CONNECTORS BULK PACKAGED</b>		
1/2" X 1/2" MNPT Straight Connector	UP120	25
3/4" X 3/4" MNPT Straight Connector	UP134	25
1" X 1" MNPT Straight Connector	UP140	25
<b>REDUCING CONNECTORS BULK PACKAGED</b>		
3/4" X 1/2" MNPT Reducing Connector	UP138	25
<b>ELBOWS BULK PACKAGED</b>		
1/2" Elbow	UP248	25
3/4" Elbow	UP256	25
1" Elbow	UP260	25
<b>MALE ELBOWS BULK PACKAGED</b>		
1/2" X 1/2" MNPT Elbow	UP280	25
<b>REDUCING ELBOWS BULK PACKAGED</b>		
3/4" X 1/2" Elbow	UP274	25
<b>TEES BULK PACKAGED</b>		
3/8" Tee	UP360	10
1/2" Tee	UP362	25
3/4" Tee	UP370	25
1" Tee	UP374	25
<b>REDUCING TEES BULK PACKAGED</b>		
1/2" X 1/2" X 3/4" Tee	UP408	25
3/4" X 3/4" X 1/2" Tee	UP412	25
3/4" X 1/2" X 3/4" Tee	UP444	25
3/4" X 1/2" X 1/2" Tee	UP454	25
1" X 3/4" X 3/4" Tee	UP414	25
1" X 1" X 1/2" Tee	UP415	25
1" X 1" X 3/4" Tee	UP416	25
<b>PLUGS BULK PACKAGED</b>		
1/2" Plug	UP514	25
3/4" Plug	UP518	25
1" Plug	UP520	25
<b>ADAPTERS BULK PACKAGED</b>		
1/2" Female Swivel Adapter	UP526	25
3/8" Female Swivel Adapter	UP527	10
1/2" X 1/2" Swivel Elbow Adapter	UP532	25



PRODUCT DESCRIPTION	PART NUMBER	QTY/BAG
<b>3-D: PEX BARB FIRE FITTINGS **</b>		
**NOT AVAILABLE IN CANADA.		
<b>FIRE HORIZONTAL TEES</b>		
3/4" x 3/4" x 1/2" FNPT	UCF12128H	3
1" x 3/4" x 1/2" FNPT	UCF16128H	3
1" x 1" x 1/2" FNPT	UCF16168H	3
<b>FIRE VERTICAL TEES</b>		
3/4" x 3/4" x 1/2" FNPT	UCF12128V	3
1" x 3/4" x 1/2" FNPT	UCF16128V	3
1" x 1" x 1/2" FNPT	UCF16168V	3
<b>FIRE DROP-EAR ELBOWS</b>		
3/4" x 1/2" FNPT	UCF128U	3
1" x 1/2" FNPT	UCF168U	3
<b>FIRE THREADED FEMALE ADAPTERS</b>		
3/4" x 1/2" FNPT	UCF128S	3
<b>FIRE ANGLED ADAPTERS</b>		
3/4" x 3/4" x 1/2" FNPT	UCF12128A	3
<b>FIRE FEMALE ELBOWS</b>		
3/4" x 1/2" FNPT Left	UCF128L	3
3/4" x 1/2" FNPT Right	UCF128R	3
1" x 1/2" FNPT Left	UCF168L	3
1" x 1/2" FNPT Right	UCF168R	3

<b>3-E: PEX BARB STOPS &amp; FIXTURE SUPPLY FITTINGS</b>		
<b>PEX CHROME PLATED 1/4 TURN ANGLE STOPS</b>		
1/2" x 3/8" OD Compression Angle Stop (Quarter Turn)	23058LF	24
1/2" x 1/4" OD Compression Angle Stop (Quarter Turn)	23056LF	6
<b>PEX CHROME PLATED 1/4 TURN STRAIGHT STOPS</b>		
3/8" x 3/8" Straight Stop (Quarter Turn)	23382LF	6
1/2" x 3/8" OD Compression Straight Stop (Quarter Turn)	23057LF	24
<b>PEX CHROME PLATED STRAIGHT STOPS</b>		
1/2" x 3/8" Compression Straight Stop	23059LF	24
1/2" x 3/8" Straight Stop	23062LF	6
1/2" x 1/2" MPT Straight Stop	23061LF	6
1/2" x 1/2" Straight Stop	23063LF	12
<b>PEX CHROME PLATED ANGLE STOPS</b>		
1/2" x 3/8" Compression Angle Stop	23060LF	12
1/2" x 3/4" MHT Angle Stop	23064LF	6

<b>3-F: PEX BARB ADDITIONAL PRODUCTS</b>		
<b>COPPER STUBOUT ELBOWS BULK PACKAGED (ALL COPPER STUBOUT ELBOWS ARE LEAD FREE)</b>		
1/2" x Closed (4" x 8")	22791	12
3/8" x 1/2" (4" x 4")	23069	6
1/2" x 1/2" (4" x 4")	23070	6





PRODUCT DESCRIPTION	PART NUMBER	QTY/BAG
<b>COPPER MANIFOLDS WITH BARB BRANCHES</b> (1" TRUNK WITH 3/4" BARB INLETS & OUTLETS AND 1/2" BARB PORTS - 2" ON CENTER) LEAD FREE		
Manifold Bracket Set (for 1"-1.5" diameter manifolds)	25484Z	1
3 Port Closed	22783	1
3 Port Open	22784	1
4 Port Closed	22785	1
4 Port Open	22786	1
6 Port Closed	22787	1
6 Port Open	22788	1
8 Port Closed	22789	1
8 Port Open	22790	1
<b>WATER HAMMER ARRESTORS</b> (PROVIDES MAINTENANCE-FREE, CONTINUOUS PROTECTION AGAINST WATER HAMMER. CAN BE POSITIONED VERTICALLY OR HORIZONTALLY)		
1/2" Residential	25401	1
<b>BARB MANIFOLDS WITH BALL VALVES LEAD FREE</b>		
Manifold 12 Port with Brass Barb Ball Valves	RM22712	1
Manifold 24 Port with Brass Barb Ball Valves	RM22724	1
Manifold 12 Port with Poly Barb Ball Valves	PM012UP	1
Manifold 24 Port with Poly Barb Ball Valves	PM024UP	1
Manifold 12 Port with Push-to-Connect Ball Valves	PM012SB	1
Manifold 24 Port with Push-to-Connect Ball Valves	PM024SB	1
<b>BARB BALL VALVES BULK PACKAGED</b>		
1/2"	22461LF	12
3/4"	22462LF	12
1"	22463LF	6

<b>3-G: PEX BARB ACCESSORIES</b>		
<b>CLAMP RINGS BULK PACKAGED</b> (STAINLESS STEEL)		
3/8"	UC952	100
1/2"	UC953	100
5/8"	UC954	50
3/4"	UC955	100
1"	UC956	50
<b>CRIMP RINGS BULK PACKAGED</b> (COPPER)		
3/8"	23101	100
1/2"	23102	100
3/4"	23103	100
1"	23104	25
LARGE DIAMETER	1-1/4"	24676
	1-1/2"	24677
	2"	24678
<b>PEX BEND SUPPORTS, SUSPENSION CLAMPS AND INSULATORS</b>		
3/8" J Hook PEX Pipe Clamp (10 Pack)	23065	12
1/2" J Hook PEX Pipe Clamp (10 Pack)	23220	12
3/4" J Hook PEX Pipe Clamp (10 Pack)	23221	12

PRODUCT DESCRIPTION	PART NUMBER	QTY/BAG
1/2" Insulated Suspension Clamp (10 Pack)	23071A10	6
3/4" Insulated Suspension Clamp (10 Pack)	23072A10	6
1" Insulated Suspension Clamp (10 Pack)	23073A10	6
1/2" Pipe Insulator (10 Pack)	23074A10	6
3/4" Pipe Insulator (10 Pack)	23075A10	6
1" Pipe Insulator (10 Pack)	23076A10	6
1/2" Polymer Bend Support with mounting bracket	23050	12
3/4" Polymer Bend Support	23051	6
1/2" Metal Pipe Support	23053	12
3/4" Metal Pipe Support	23054	12
3/8" - 1/2" PEX Conduit Slab Support Elbow	25490Z	10
1/2" PEX Wire Mesh Installation Clips, for wire mesh 1/8" - 3/16" OD (25 Pack)	25485Z25	1
1/2" PEX Foam Insulation Twist Clips (25 Pack)	25486Z25	1

3-H: PEX BARB TOOLS			
PEX CRIMP TOOLS			
3/8" Large PEX Crimp Tool	23077	1	
1/2" Large PEX Crimp Tool	23078	1	
3/4" Large PEX Crimp Tool	23079	1	
1/2", 3/4" PEX Combo Crimp Tool	23251	1	
3/8", 1/2", 3/4" PEX Pocket Crimp Tool	23383	1	
PEX CRIMP TOOL KIT			
3/8", 1/2", 3/4", 1" PEX Crimp Ring Tool Kit (Crimp Ring Gauge included)	23100	1	
<b>LARGE DIAMETER</b>	1-1/4", 1-1/2", 2" Crimp Tool	24675	1
PEX CLAMP TOOLS			
PEX Clamp Tool One-hand Operation	UC961	1	
PEX Clamp Tool Standard Handles	23081	1	
PEX PIPE CUTTER			
PEX Pipe Cutter	U701	1	
CRIMP RING GAUGE			
3/8", 1/2", 3/4", 1" PEX Crimp Ring Gauge	23080	6	
CRIMP RING REMOVAL TOOL			
PEX Crimp Ring Removal Tool	23055	6	



# Benefits of SharkBite PEX



## Health/Safety

No glue, solder, or solvents required for the connection process, which keeps potentially dangerous chemicals out of plumbing systems. Additionally, SharkBite PEX Pipe eliminates the need for open flames in the house that could be a potential fire hazard. There is no risk of copper traces in water from breakdown of pipe that has been linked to heart disease and Alzheimer's.



## Versatile

SharkBite PEX Pipe can be installed in dry or wet conditions. SharkBite PEX Pipe can lend itself to many applications due to its physical properties of flexibility, reliability and installation ease such as hydronic heating, fire protection, etc.



## Chlorine Resistance

SharkBite PEX Pipe is tested to the highest level of chlorine resistance standards, testing at 100% chlorine at 140°F.



## Proven and Guaranteed

SharkBite PEX Pipe has been around for more than 35 years with over 12 Billion feet of pipe installed worldwide.



## Freeze Resistant

SharkBite PEX Pipe is freeze resistant as the pipe can expand and contract as water freezes and thaws within the pipe.



## Flexibility

Able to bend pipe around corners which removes the need for 45° or 90° elbows in certain situations. SharkBite's new coiling process increases the flexibility of our coiled pipe even more.



## Cost Effective

SharkBite PEX Pipe is substantially more cost effective than Copper pipe—SharkBite PEX Pipe costs a third of the price of Copper. SharkBite PEX Pipe is a fixed cost as prices don't fluctuate daily like Copper pipe.

## PROUDLY AMERICAN MADE

## SharkBite PEX – CERTIFICATIONS



NSF/ANSI 14  
NSF/ANSI 61



ASTM F 877



AWWA C904



ASTM F 876



CSA B137.5



UL 1821



# MADE IN NORTH AMERICA

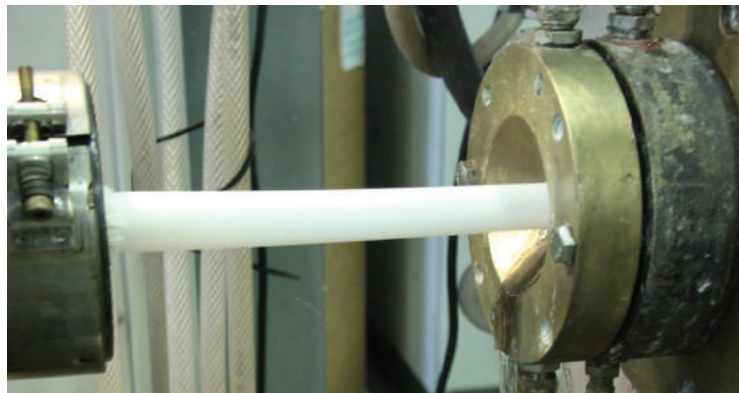
SharkBite PEX Pipe is a cost effective piping solution approved for use in both hot and cold plumbing installations. Meeting the highest chlorine resistance standards and utilizing the most energy efficient manufacturing processes, our PEX pipe is proudly produced in Alabama. We own our manufacturing process from start to finish, so every piece of SharkBite PEX Pipe is guaranteed from concept to delivery.

PEX pipe was introduced to North America in 1984 based on European market success, and was tested extensively for durability and material performance. All USA-installed PEX pipe must meet the qualification requirements as specified in the ASTM PEX Standards. SharkBite PEX Pipe can bend up to six times the outside diameter of the pipe—which is the maximum bend radius recommended by PEX pipe manufacturers.

SharkBite PEX Pipe can be used in a variety of applications including:

- Domestic plumbing
- Fire suppression systems (residential fire sprinklers)
- Municipal water service pipe for use in underground applications
- Radiant heating systems for suspended floor systems or in slab construction
- Snow and ice melt systems for sidewalks, driveways, entrances, and ramps
- Turf conditioning for greenhouses, golf courses, and sports fields
- Water reuse and reclamations systems

**DISCOVER THE FLEXIBILITY OF SHARKBITE PEX PIPE.**





PRODUCT DESCRIPTION	PART NUMBER	PART NUMBER	PART NUMBER	PACK/QTY
<b>SECTION 4: SHARKBITE PEX PIPE</b>				
<b>4-A: POTABLE WATER PEX PIPE</b>				
<b>GREY PEX PIPE (COILS)</b>	<b>GREY</b>			
1/4" 50' Coil Grey Tubing	U850G50			1
<b>PEX PIPE (COILS)</b>	<b>WHITE</b>	<b>RED</b>	<b>BLUE</b>	
1/4" (3/8" OD) 100' Coil Pipe	U850W100			
3/8" 50' Coil Pipe	U855W50			1
3/8" 100' Coil Pipe	U855W100	U855R100	U855B100	1
1/2" 25' Coil Pipe	U860W25	U860R25	U860B25	1
1/2" 50' Coil Pipe	U860W50	U860R50	U860B50	1
1/2" 100' Coil Pipe	U860W100	U860R100	U860B100	1
1/2" 300' Coil Pipe	U860W300	U860R300	U860B300	1
1/2" 500' Coil Pipe	U860W500	U860R500	U860B500	1
3/4" 25' Coil Pipe	U870W25	U870R25	U870B25W	1
3/4" 50' Coil Pipe	U870W50	U870R50	U870B50	1
3/4" 100' Coil Pipe	U870W100	U870R100	U870B100	1
3/4" 300' Coil Pipe	U870W300	U870R300	U870B300	1
3/4" 500' Coil Pipe	U870W500	U870R500	U870B500	1
1" 100' Coil Pipe	U880W100	U880R100	U880B100	1
1" 300' Coil Pipe	U880W300	U880R300	U880B300	1
1" 500' Coil Pipe	U880W500	U880R500	U880B500	1
1-1/4" 100' Coil Pipe	U885W100			1
1-1/2" 100' Coil Pipe	U890W100			1
2" 100' Coil Pipe	U895W100			1
<b>GREY PEX PIPE (COILS)</b>	<b>GREY</b>			
1/4" 5' Length Grey Tubing Lead Free	U850G5			20
<b>PEX PIPE (STRAIGHT LENGTHS)</b>	<b>WHITE</b>	<b>RED</b>	<b>BLUE</b>	
3/8" 5' Length Pipe	U855W5			10
3/8" 10' Length Pipe	U855W10			10
1/2" 5' Length Pipe	U860W5	U860R5	U860B5	10
1/2" 10' Length Pipe	U860W10	U860R10	U860B10	10
3/4" 5' Length Pipe	U870W5	U870R5	U870B5	10
3/4" 10' Length Pipe	U870W10	U870R10	U870B10	10
1" 5' Length Pipe	U880W5	U880R5	U880B5	5
1" 10' Length Pipe	U880W10	U880R10	U880B10	5
1-1/4" 20' Length Pipe	U885W20			1
1-1/2" 20' Length Pipe	U890W20			1
2" 20' Length Pipe	U895W20			3

PRODUCT DESCRIPTION	PART NUMBER	PACK/QTY
<b>4-B: SPECIAL APPLICATION PEX PIPE</b>		
<b>RECLAIMED WATER PEX PIPE</b> (PURPLE COILS) FOR USE WITH NON-POTABLE WATER APPLICATIONS AND SHALL NOT BE INSTALLED IN UV-EXPOSED ENVIRONMENTS	RECLAIMED	
1/2" 100' Coil Purple Pipe	U860P100	1
1/2" 300' Coil Purple Pipe	U860P300	1
3/4" 100' Coil Purple Pipe	U870P100	1
3/4" 300' Coil Purple Pipe	U870P300	1
1" 100' Coil Purple Pipe	U880P100	1
1" 300' Coil Purple Pipe	U880P300	1
<b>OXYGEN BARRIER PEX PIPE (COILS)</b>	OXYGEN BARRIER	
3/8" 100' Coil PEX Pipe Orange Color with Black Text	U8550100	1
3/8" 300' Coil PEX Pipe Orange Color with Black Text	U8550300	1
3/8" 500' Coil PEX Pipe Orange Color with Black Text	U8550500	1
1/2" 100' Coil PEX Pipe Orange Color with Black Text	U8600100	1
1/2" 300' Coil PEX Pipe Orange Color with Black Text	U8600300	1
1/2" 500' Coil PEX Pipe Orange Color with Black Text	U8600500	1
1/2" 1000' Coil PEX Pipe Orange Color with Black Text	U86001000	1
5/8" 300' Coil PEX Pipe Orange Color with Black Text	U8650300	1
3/4" 100' Coil PEX Pipe Orange Color with Black Text	U8700100	1
3/4" 300' Coil PEX Pipe Orange Color with Black Text	U8700300	1
3/4" 500' Coil PEX Pipe Orange Color with Black Text	U8700500	1
3/4" 1000' Coil PEX Pipe Orange Color with Black Text	U87001000	1
1" 100' Coil PEX Pipe Orange Color with Black Text	U8800100	1
1" 300' Coil PEX Pipe Orange Color with Black Text	U8800300	1
1" 500' Coil PEX Pipe Orange Color with Black Text	U8800500	1
<b>OXYGEN BARRIER PEX PIPE (STRAIGHT LENGTHS)</b>	OXYGEN BARRIER	
1/2" 20' Length O2 barrier PEX Pipe Orange Color	U860020	10
3/4" 20' Length O2 barrier PEX Pipe Orange Color	U870020	10





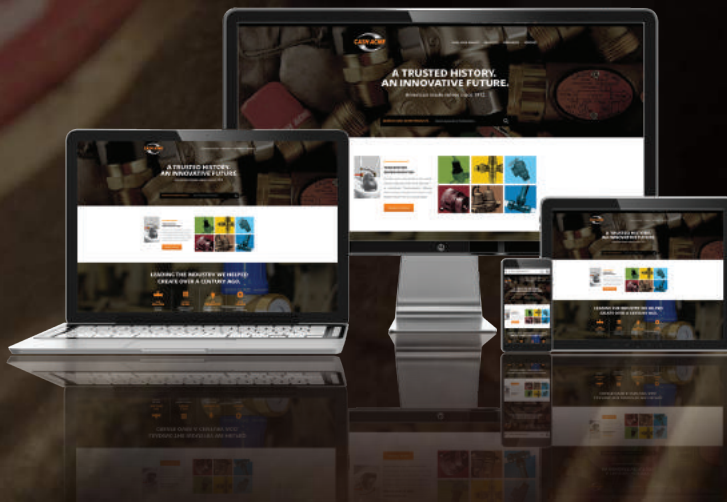


# **WATER CONTROL VALVES THAT STAND THE TEST OF TIME**

In 1893, A.W. Cash designed a valve for U.S. Navy submarines. With the bottom of the sea as his testing ground, the valve became celebrated for its performance, reliability and dependability. Today, every water control valve we build is born from its DNA.

With more than 100 million valves produced and counting, Cash Acme is the world's largest volume T&P valve producer—and is a trusted manufacturer of water control valves to safeguard water delivery in residential, commercial and industrial settings.

It's our commitment to quality that has driven a century of success with water control valves that stand the test of time. Proudly built in America for more than 100 years, Cash Acme's ISO 9001-certified quality assurance processes ensure that every valve that leaves our facility is 100% tested and meets all standards.



[www.cashacme.ca](http://www.cashacme.ca)



PRODUCT DESCRIPTION	PART NUMBER	QTY/ BAG
<b>SECTION 5: CASH ACME PRESSURE REGULATING VALVES</b>		
<b>5-A: EB45</b>		
<b>(FOR ADDITIONAL PRESSURE SETTINGS OR GAUGE CONNECTION BODIES CONTACT CUSTOMER SERVICE)</b>		
<b>EB45 LEAD FREE SHARKBITE CONNECTIONS</b>		
<b>(FACTORY SET AT 45 PSI, ADJUSTABLE FROM 10-70 PSI. INTEGRAL BY-PASS FEATURE. LISTED BY IAPMO &amp; ASSE.)</b>		
1/2" EB45-DSB Direct SharkBite	23807-0045	1
1/2" EB45-DSB Direct SharkBite Metal Top	24472-0045	1
1/2" EB45-SDSB Slip Feature Direct SharkBite	24383-0045	1
1/2" EB45-SDSB Slip Feature Direct SharkBite Metal Top	24474-0045	1
1/2" EB45-DUSB Double Union SharkBite	23893-0045	1
1/2" EB45-DUSB Double Union SharkBite Metal Top	24476-0045	1
3/4" EB45-DSB Direct SharkBite	23808-0045	1
3/4" EB45-DSB Direct SharkBite Metal Top	24473-0045	1
3/4" EB45-SDSB Slip Feature Direct SharkBite	24384-0045	1
3/4" EB45-SDSB Slip Feature Direct SharkBite Metal Top	24475-0045	1
3/4" EB45-DUSB Double Union SharkBite	23894-0045	1
3/4" EB45-DUSB Double Union SharkBite Metal Top	24477-0045	1
3/4" EB45 Double Union SharkBite (60 psi setting)	23896-0060	1
3/4" EB45-DUSB Double Union SharkBite with Gauge Port	25715-0045	1
1" EB45-DSB Direct SharkBite	22675-0045	1
1" EB45-DUSB Double Union SharkBite	23358-0045	1
1" EB45-DUSB Double Union SharkBite (60 psi setting)	23945-0060	1
1" EB45-Double SharkBite Direct w/ Gauge Connection	24453-0045	1
<b>EB45 LEAD FREE THREADED NPT</b>		
<b>(FACTORY SET AT 45 PSI, ADJUSTABLE FROM 10-70 PSI. INTEGRAL BY-PASS FEATURE. LISTED BY IAPMO &amp; ASSE.)</b>		
1/2" EB45 Threaded NPT	23880-0045	1
1/2" EB45 Threaded NPT Metal Top	24460-0045	1
3/4" EB45 Threaded NPT	23881-0045	1
3/4" EB45 Threaded NPT Metal Top	24461-0045	1
1" EB45 Threaded NPT	23164-0045	1
1-1/4" EB45 Threaded NPT	23166-0045	1
1-1/2" EB45 Threaded NPT	23167-0045	1
2" EB45 Threaded NPT	23160-0045	1
<b>EB45-U LEAD FREE SINGLE UNION THREADED</b>		
<b>(FACTORY SET AT 45 PSI, ADJUSTABLE FROM 10-70 PSI. INTEGRAL BY-PASS FEATURE. LISTED BY IAPMO &amp; ASSE.)</b>		
1/2" EB45-U Single Union Threaded	23882-0045	1
1/2" EB45-U Single Union Threaded Metal Top	24462-0045	1
3/4" EB45-U Single Union Threaded	23883-0045	1
3/4" EB45-U Single Union Threaded Metal Top	24463-0045	1
3/4" EB45-U Union Inlet with Gauge Connection	24446-0045	1
1" EB45-U Single Union Threaded	23155-0045	1
1" EB45-U Union Inlet with Gauge Connection	24450-0045	1
1-1/4" EB45-U Single Union Threaded	23158-0045	1
1-1/2" EB45-U Single Union Threaded	23168-0045	1
2" EB45-U Single Union Threaded	23161-0045	1





PRODUCT DESCRIPTION	PART NUMBER	QTY/ BAG
<b>EB45-C LEAD FREE SINGLE UNION SWEAT</b> (FACTORY SET AT 45 PSI, ADJUSTABLE FROM 10-70 PSI. INTEGRAL BY-PASS FEATURE. LISTED BY IAPMO & ASSE.)		
1/2" EB45-C Single Union Sweat	23886-0045	1
1/2" EB45-C Single Union Sweat Metal Top	24466-0045	1
3/4" EB45-C Single Union Sweat	23887-0045	1
3/4" EB45-C Single Union Sweat Metal Top	24467-0045	1
3/4" EB45-C Valve Assy with Gauge Connection	24447-0045	1
1" EB45-C Single Union Sweat	23165-0045	1
1" EB45-C Valve Assy with Gauge Connection	24451-0045	1
1-1/4" EB45-C Single Union Sweat	23908-0045	1
1-1/2" EB45-C Single Union Sweat	23909-0045	1
2" EB45-C Single Union Sweat	23910-0045	1
<b>EB45-DU LEAD FREE DOUBLE UNION THREADED</b> (FACTORY SET AT 45 PSI, ADJUSTABLE FROM 10-70 PSI. INTEGRAL BY-PASS FEATURE. LISTED BY IAPMO & ASSE.)		
1/2" EB45-DU Double Union Threaded	23884-0045	1
1/2" EB45-DU Double Union Threaded Metal Top	24464-0045	1
3/4" EB45-DU Double Union Threaded	23885-0045	1
3/4" EB45-DU Double Union Threaded Metal Top	24465-0045	1
1" EB45-DU Double Union Threaded	23156-0045	1
1-1/4" EB45-DU Double Union Threaded	23905-0045	1
1-1/2" EB45-DU Double Union Threaded	23906-0045	1
2" EB45-DU Double Union Threaded	23907-0045	1
<b>EB45-CC LEAD FREE DOUBLE UNION SWEAT</b> (FACTORY SET AT 45 PSI, ADJUSTABLE FROM 10-70 PSI. INTEGRAL BY-PASS FEATURE. LISTED BY IAPMO & ASSE.)		
1/2" EB45-CC Double Union Sweat	23888-0045	1
1/2" EB45-CC Double Union Sweat Metal Top	24468-0045	1
3/4" EB45-CC Double Union Sweat	23889-0045	1
3/4" EB45-CC Double Union Sweat Metal Top	24469-0045	1
1" EB45-CC Double Union Sweat	23157-0045	1
1-1/4" EB45-CC Double Union Sweat	23159-0045	1
1-1/2" EB45-CC Double Union Sweat	23898-0045	1
2" EB45-CC Double Union Sweat	23899-0045	1
<b>EB45-DUPE LEAD FREE DOUBLE UNION PEX ENDS</b> (FACTORY SET AT 45 PSI, ADJUSTABLE FROM 10-70 PSI. INTEGRAL BY-PASS FEATURE. LISTED BY IAPMO & ASSE.)		
3/4" EB45-DUPE Double Union PEX Ends	23891-0045	1
3/4" EB45-DUPE Double Union PEX Ends Metal Top	24471-0045	1
1" EB45-DUPE Double Union PEX Ends	23942-0045	1
<b>EB45-DUCPVC LEAD FREE DOUBLE UNION CPVC ENDS</b> (FACTORY SET AT 45 PSI, ADJUSTABLE FROM 10-70 PSI. INTEGRAL BY-PASS FEATURE. LISTED BY IAPMO & ASSE.)		
3/4" EB45-DUCPVC Double Union CPVC Ends	23890-0045	1
3/4" EB45-DUCPVC Double Union CPVC Ends Metal Top	24470-0045	1
1" EB45-DUCPVC Double Union CPVC Ends	23941-0045	1
<b>EB45 DOUBLE UNION BYPASS KITS</b>		
1" EB45 Double Union Threaded NPT Temporary Bypass Kit	22937	1
1" EB45 Double Union SWT Temporary Bypass Kit	22938	1
1-1/4" EB45 Double Union Threaded NPT Temporary Bypass Kit	22942	1
1-1/4" EB45 Double Union SWT Temporary Bypass Kit	22943	1

PRODUCT DESCRIPTION	PART NUMBER	QTY/ BAG
<b>5-B: EB25</b>		
<b>EB25 LEAD FREE SHARKBITE CONNECTIONS</b> (FACTORY SET AT 45 PSI, ADJUSTABLE FROM 20-90 PSI. INTEGRAL BY-PASS FEATURE. FULL CARTRIDGE W/ PRESSURE INDICATOR. LISTED BY IAPMO & ASSE.)		
3/4" EB25-DUSB Double Union SharkBite	23955-0045	1
1" EB25-DUSB Double Union SharkBite	23956-0045	1
<b>EB25 LEAD FREE THREADED NPT</b> (FACTORY SET AT 45 PSI, ADJUSTABLE FROM 20-90 PSI. INTEGRAL BY-PASS FEATURE. FULL CARTRIDGE W/ PRESSURE INDICATOR. LISTED BY IAPMO & ASSE.)		
3/4" EB25 Threaded NPT Stainless Steel Valve	22263-0045	1
1" EB25 Threaded NPT Stainless Steel Valve	22266-0045	1
<b>EB25-U LEAD FREE SINGLE UNION THREADED</b> (FACTORY SET AT 45 PSI, ADJUSTABLE FROM 20-90 PSI. INTEGRAL BY-PASS FEATURE. FULL CARTRIDGE W/ PRESSURE INDICATOR. LISTED BY IAPMO & ASSE.)		
1/2" EB25-U Single Union Threaded	23135-0045	1
3/4" EB25-U Single Union Threaded	23136-0045	1
1" EB25-U Single Union Threaded	23138-0045	1
1-1/4" EB25-U Single Union Threaded	23141-0045	1
1-1/2" EB25-U Single Union Threaded	23144-0045	1
2" EB25-U Single Union Threaded	23145-0045	1
<b>EB25-U NON-POTABLE SINGLE UNION THREADED*</b> (FACTORY SET AT 45 PSI, ADJUSTABLE FROM 20-90 PSI. INTEGRAL BY-PASS FEATURE. FULL CARTRIDGE W/ PRESSURE INDICATOR. LISTED BY IAPMO & ASSE.)		
1-1/4" EB25-U Single Union Threaded	22249-0045	1
1-1/2" EB25-U Single Union Threaded	22321-0045	1
2" EB25-U Single Union Threaded	22323-0045	1
<b>EB25-C LEAD FREE SINGLE UNION SWEAT</b> (FACTORY SET AT 45 PSI, ADJUSTABLE FROM 20-90 PSI. INTEGRAL BY-PASS FEATURE. FULL CARTRIDGE W/ PRESSURE INDICATOR. LISTED BY IAPMO & ASSE.)		
1/2" EB25-C Single Union Sweat	23952-0045	1
3/4" EB25-C Single Union Sweat	23953-0045	1
1" EB25-C Single Union Sweat	23954-0045	1
1-1/4" EB25-C Single Union Sweat	23964-0045	1
1-1/2" EB25-C Single Union Sweat	23965-0045	1
2" EB25-C Single Union Sweat	23966-0045	1
<b>EB25-C NON-POTABLE SINGLE UNION SWEAT*</b> (FACTORY SET AT 45 PSI, ADJUSTABLE FROM 20-90 PSI. INTEGRAL BY-PASS FEATURE. FULL CARTRIDGE W/ PRESSURE INDICATOR. LISTED BY IAPMO & ASSE.)		
1-1/4" EB25-C Single Union Sweat	22331-0045	1
1-1/2" EB25-C Single Union Sweat	22332-0045	1
2" EB25-C Single Union Sweat	22333-0045	1
<b>EB25-DU LEAD FREE DOUBLE UNION THREADED</b> (FACTORY SET AT 45 PSI, ADJUSTABLE FROM 20-90 PSI. INTEGRAL BY-PASS FEATURE. FULL CARTRIDGE W/ PRESSURE INDICATOR. LISTED BY IAPMO & ASSE.)		
3/4" EB25-DU Double Union Threaded Stainless Steel Valve	22264-0045	1
1" EB25-DU Double Union Threaded Stainless Steel Valve	22267-0045	1
1-1/4" EB25-DU Double Union Threaded	23142-0045	1
1-1/2" EB25-DU Double Union Threaded	23967-0045	1
2" EB25-DU Double Union Threaded	23968-0045	1

\*While Supplies Last.





PRODUCT DESCRIPTION	PART NUMBER	QTY/ BAG
<b>EB25-DU NON-POTABLE DOUBLE UNION THREADED*</b> (FACTORY SET AT 45 PSI, ADJUSTABLE FROM 20-90 PSI. INTEGRAL BY-PASS FEATURE. FULL CARTRIDGE W/ PRESSURE INDICATOR. LISTED BY IAPMO & ASSE.)		
1-1/4" EB25-DU Double Union Threaded	22250-0045	1
1-1/2" EB25-DU Double Union Threaded	22322-0045	1
2" EB25-DU Double Union Threaded	22324-0045	1
<b>EB25-CC LEAD FREE DOUBLE UNION SWEAT</b> (FACTORY SET AT 45 PSI, ADJUSTABLE FROM 20-90 PSI. INTEGRAL BY-PASS FEATURE. FULL CARTRIDGE W/ PRESSURE INDICATOR. LISTED BY IAPMO & ASSE.)		
3/4" EB25-CC Double Union Sweat	23137-0045	1
1" EB25-CC Double Union Sweat	23139-0045	1
1-1/4" EB25-CC Double Union Sweat	23143-0045	1
1-1/2" EB25-CC Double Union Sweat	23969-0045	1
2" EB25-CC Double Union Sweat	23970-0045	1
<b>EB25-CC NON-POTABLE DOUBLE UNION SWEAT*</b> (FACTORY SET AT 45 PSI, ADJUSTABLE FROM 20-90 PSI. INTEGRAL BY-PASS FEATURE. FULL CARTRIDGE W/ PRESSURE INDICATOR. LISTED BY IAPMO & ASSE.)		
1-1/4" EB25-CC Double Union Sweat	22317-0045	1
1-1/2" EB25-CC Double Union Sweat	22427-0045	1
2" EB25-CC Double Union Sweat	22428-0045	1
<b>EB25-DUPE LEAD FREE DOUBLE UNION PEX ENDS</b> (FACTORY SET AT 45 PSI, ADJUSTABLE FROM 20-90 PSI. INTEGRAL BY-PASS FEATURE. FULL CARTRIDGE W/ PRESSURE INDICATOR. LISTED BY IAPMO & ASSE.)		
3/4" EB25-DUPE Double Union PEX Ends	23957-0045	1
1" EB25-DUPE Double Union PEX Ends	23140-0045	1
<b>EB25 LEAD FREE CONTRACTOR KITS</b> (VALVE BODY AND TEMPORARY CAP WITH STRAINER)		
3/4" EB25-U Single Union Threaded Contractor Kit	24395	1
1" EB25-U Single Union Threaded Contractor Kit	24396	1
1" EB25-C Single Union Sweat Contractor Kit	24397	1
1-1/4" EB25-U Single Union Threaded Contractor Kit	24398	1
1-1/4" EB25-C Single Union Sweat Contractor Kit	23147	1
<b>EB25 LEAD FREE CARTRIDGE KIT</b> (CARTRIDGE AND SCREEN FOR CONTRACTOR KITS)		
1/2"-1" EB25 Cartridge Kit	23148	1
1-1/4"-2" EB25 Cartridge Kit	23149	1
<b>EB25 DIRECT BURIAL COVER KIT</b> (INCLUDES PLASTIC COVER AND O-RING)		
1/2"-1" EB25 Direct Burial Cover Kit	22224	1
<b>EB25 LEAD FREE STAINLESS STEEL THREADED NPT</b> (FACTORY SET AT 45 PSI, ADJUSTABLE FROM 20-90 PSI. INTEGRAL BY-PASS FEATURE. FULL CARTRIDGE W/ PRESSURE INDICATOR. LISTED BY IAPMO & ASSE.)		
3/4" EB25 Threaded NPT	22263-0045	1
1" EB25 Threaded NPT	22266-0045	1
<b>EB25-DU LEAD FREE STAINLESS STEEL DOUBLE UNION THREADED</b> (FACTORY SET AT 45 PSI, ADJUSTABLE FROM 20-90 PSI. INTEGRAL BY-PASS FEATURE. FULL CARTRIDGE W/ PRESSURE INDICATOR. LISTED BY IAPMO & ASSE.)		
3/4" EB25-DU Double Union Threaded	22264-0045	1
1" EB25-DU Double Union Threaded	22267-0045	1

\*While Supplies Last.



PRODUCT DESCRIPTION	PART NUMBER	QTY/ BAG
<b>EB25 LEAD FREE MULTI-CARTRIDGE</b> (FACTORY SET AT 55 PSI, ADJUSTABLE FROM 20-90 PSI. INTEGRAL BY-PASS FEATURE. FULL CARTRIDGE W/ PRESSURE INDICATOR.)		
2-1/2" EB25 Multi-Cartridge Threaded NPT	23994-0055	1
2-1/2" EB25 Multi-Cartridge Flanged	23996-0055	1
3" EB25 Multi-Cartridge Threaded NPT	23995-0055	1
3" EB25 Multi-Cartridge Flanged	23997-0055	1
4" EB25 Multi-Cartridge Flanged	23998-0055	1
<b>EB25 NON-POTABLE MULTI-CARTRIDGE*</b> (FACTORY SET AT 55 PSI, ADJUSTABLE FROM 20-90 PSI. INTEGRAL BY-PASS FEATURE. FULL CARTRIDGE W/ PRESSURE INDICATOR.)		
2-1/2" EB25 Multi-Cartridge Threaded NPT	22391-0055	1
2-1/2" EB25 Multi-Cartridge Flanged	22624-0055	1
3" EB25 Multi-Cartridge Threaded NPT	22396-0055	1
3" EB25 Multi-Cartridge Flanged	22625-0055	1



<b>5-C: E3</b> (FOR ADDITIONAL PRESSURE SETTINGS CONTACT CUSTOMER SERVICE. NONSTANDARD PRESSURE SETTINGS INCUR A 10% PRICE PREMIUM.)		
<b>E3 LEAD FREE THREADED NPT</b> (FACTORY SET AT 45 PSI, ADJUSTABLE FROM 20-70 PSI. LISTED BY IAPMO & ASSE.)		
1/2" E3 Threaded NPT	24700-0045	1
3/4" E3 Threaded NPT	24703-0045	1
1" E3 Threaded NPT	24706-0045	1
1-1/4" E3 Threaded NPT	24709-0045	1
1-1/2" E3 Threaded NPT	24712-0045	1
2" E3 Threaded NPT	24715-0045	1
<b>E41 NON-POTABLE THREADED NPT</b> (FACTORY SET AT 45 PSI, ADJUSTABLE FROM 20-70 PSI. LISTED BY ASSE)		
1" E3 Threaded NPT	10932-0045	1
1-1/4" E3 Threaded NPT	11176-0045	1
1-1/2" E3 Threaded NPT	11180-0045	1
2" E3 Threaded NPT	11184-0045	1

<b>5-D: E41</b> (FOR ADDITIONAL PRESSURE SETTINGS CONTACT CUSTOMER SERVICE. NONSTANDARD PRESSURE SETTINGS INCUR A 10% PRICE PREMIUM.)		
<b>E41 LEAD FREE THREADED NPT</b> (FACTORY SET AT 45 PSI, ADJUSTABLE FROM 20-70 PSI. LISTED BY ASSE.)		
1/2" E41 Threaded NPT	24478-0045	1
3/4" E41 Threaded NPT	24480-0045	1
1" E41 Threaded NPT	24482-0045	1
1-1/4" E41 Threaded NPT	24484-0045	1
1-1/2" E41 Threaded NPT	24486-0045	1
2" E41 Threaded NPT	24487-0045	1
<b>E41 NON-POTABLE THREADED NPT</b> (FACTORY SET AT 45 PSI, ADJUSTABLE FROM 20-70 PSI. LISTED BY ASSE)		
1/2" E41 Threaded NPT	11250-0045	1
3/4" E41 Threaded NPT	11251-0045	1
1" E41 Threaded NPT	11252-0045	1



\*While Supplies Last.



PRODUCT DESCRIPTION	PART NUMBER	QTY/ BAG
1-1/4" E41 Threaded NPT	11253-0045	1
1-1/2" E41 Threaded NPT	11254-0045	1
2" E41 Threaded NPT	11255-0045	1

### 5-E: E56

(FOR ADDITIONAL PRESSURE SETTINGS CONTACT CUSTOMER SERVICE. NONSTANDARD PRESSURE SETTINGS INCUR A 10% PRICE PREMIUM.)

#### E56 LEAD FREE HIGH CAPACITY REGULATOR

(FACTORY SET AT 45 PSI. CONTACT CUSTOMER SERVICE FOR ADDITIONAL PRESSURE SETTINGS.)

2" E56 Threaded NPT	24454-0045	1
2" E56 Flanged	24457-0045	1
2-1/2" E56 Threaded NPT	24455-0045	1
2-1/2" E56 Flanged	24458-0045	1
3" E56 Threaded NPT	24456-0045	1
3" E56 Flanged	24459-0045	1

#### E56 NON-POTABLE HIGH CAPACITY REGULATOR\*

(FACTORY SET AT 45 PSI. CONTACT CUSTOMER SERVICE FOR ADDITIONAL PRESSURE SETTINGS.)

2-1/2" E56 Threaded	07293-0045	1
2-1/2" E56 Flanged	07295-0045	1

### 5-F: EB75

(FOR ADDITIONAL PRESSURE SETTINGS CONTACT CUSTOMER SERVICE)

#### EB75 NON-POTABLE PRESSURE REGULATORS FOR WATER & AIR

1/2" EB75 FPT X FPT (Valve is not a cartridge based design; 0-20 psi range)	20658-0005	1
3/4" EB75 FPT X FPT (Valve is not a cartridge based design; 0-20 psi range )	20662-0005	1
1/2" EB75 FPT X FPT (Cartridge based design; 10-70 psi range)	22999-0045	1
3/4" EB75 FPT X FPT (Cartridge based design; 10-70 psi range)	23000-0045	1

#### E75P NON-POTABLE PRESSURE REGULATORS FOR PROPANE

(PLASTIC T-HANDLE, DIAPHRAGM LINER. STANDARD PRESSURE RANGE 0-20 PSI.)

1/2" Threaded Inlet	20657-0008	1
1/2" Threaded Inlet with Clean-Out Plug	20664-0010	1

### 5-G: PRESSURE REGULATOR REPAIR KITS

#### EB45 REPAIR KITS

EB45 Cartridge Kit-Compact Model (1/2"-3/4" Compact Models)	23870	1
EB45 Cartridge Kit-Classic Model (1/2"-1" Classic Models)	22595	1
EB45 Cartridge Kit-(1-1/4"-2" Models)	23871	1

#### EB25 REPAIR KITS

EB25 Cartridge Kit-(1/2"-1" Models)	23148	1
EB25 Cartridge Kit-(1-1/4"-2" Models and Multi-Cartridge)	23149	1

#### E3 REPAIR KITS

1/2" Repair Kit	11488	1
3/4" Repair Kit	11489	1
1" Repair Kit	11490	1
1-1/4" Repair Kit	11491	1
1-1/2" Repair Kit	11492	1
2" Repair Kit	11493	1

PRODUCT DESCRIPTION	PART NUMBER	QTY/ BAG
<b>E41 REPAIR KITS</b>		
1/2" Repair Kit	11259	1
3/4" Repair Kit	11260	1
1" Repair Kit	11261	1
1-1/4" Repair Kit	11262	1
1-1/2" Repair Kit	11263	1
2" Repair Kit	11264	1
<b>E56 REPAIR KIT</b>		
All Repair Kit	20778	1
<b>EB86 REPAIR KITS</b>		
1/2" or 3/4" Repair Kit	14511	1
1" Repair Kit	14512	1
1-1/4" Repair Kit	17073	1
1-1/2" Repair Kit	17078	1
2" Repair Kit	17083	1



## SECTION 6: CASH ACME THERMOSTATIC MIXING VALVES

### 6-A: DISTRIBUTION & IN-LINE THERMOSTATIC MIXING VALVES

#### TANK BOOSTER PRO LEAD FREE (ASSE 1017, 1070, & CSA B 125.3)

3/4" Heatguard Tank Booster Pro with Corrugated Hose and Integral Checks	24639	1
3/4" Heatguard Tank Booster Pro with Braided Hose and Integral Checks	24832	1

TRIPLE  
LISTED!

#### HG110-D LEAD FREE (ASSE 1017, 1069, 1070, & CSA B 125.3)

1/2" HG110-D with Integrated SharkBite Connections and Integral Checks	24548	1
3/4" HG110-D with Integrated SharkBite Connections and Integral Checks	24549	1
1/2" HG110-D with SharkBite Union Connections and Integral Checks	24504	1
3/4" HG110-D with SharkBite Union Connections and Integral Checks	24505	1
1/2" HG110-D with Threaded FNPT Connections and Integral Checks	24510	1
3/4" HG110-D with Threaded MNPT Connections and Integral Checks	24511	1
1/2" HG110-D with Sweat Connections and Integral Checks	24501	1
3/4" HG110-D with Sweat Connections and Integral Checks	24502	1
1" HG110-D with Sweat Connections and Integral Checks	24503	1
1/2" HG110-D with CPVC Connections and Integral Checks	24508	1
3/4" HG110-D with CPVC Connections and Integral Checks	24509	1
1/2" HG110-D with Barb Connections and Integral Checks	24506	1
3/4" HG110-D with Barb Connections and Integral Checks	24507	1
3/4" HG110-D with Threaded FNPT Connections and Integral Checks	25523	1



### 6-B: IN-LINE THERMOSTATIC MIXING VALVES

#### HG160 LEAD FREE (ASSE 1069, 1070, & CSA B125.3)

1/2" HG160 with SharkBite Connections and Integral Checks	24529	1
3/4" HG160 with SharkBite Connections and Integral Checks	24530	1
1/2" HG160 with Threaded NPT Connections and Integral Checks	24536	1
1/2" HG160 with Sweat Connections and Integral Checks	24528	1





PRODUCT DESCRIPTION	PART NUMBER	QTY/ BAG
1/2" HG160 with CPVC Connections and Integral Checks	24533	1
3/4" HG160 with CPVC Connections and Integral Checks	24534	1
1/2" HG160 with Barb Connections and Integral Checks	24531	1
3/4" HG160 with Barb Connections and Integral Checks	24532	1
<b>HG145 LEAD FREE WITH MOUNTING CLAMP AND INLET STRAINER SCREENS (ASSE 1070 &amp; CSA B 125.3)</b>		
3/8" HG145 with Compression Connections and Integral Checks	24524	1
3/8" HG145 with Compression Connections, Tee & Elbow and Integral Checks	24525	1
<b>HG135 LEAD FREE</b>		
3/8" HG135 with Compression Connections and Integral Checks	25686	1
3/8" HG135 with Compression Connections, Tee & Elbow and Integral Checks	25687	1

### 6-C: RADIANT HEATING THERMOSTATIC MIXING VALVES

#### HG110-HX LEAD FREE (RADIANT APPLICATIONS) (ASSE 1017 & CSA B 125.3)

1/2" HG110-HX with Threaded NPT Connections and Integral Checks	24517	1
3/4" HG110-HX with Threaded NPT Connections and Integral Checks	24518	1
1/2" HG110-HX with Sweat Connections and Integral Checks	24513	1
3/4" HG110-HX with Sweat Connections and Integral Checks	24514	1
1" HG110-HX with Sweat Connections and Integral Checks	24515	1
3/4" HG110-HX with SharkBite Connections and Integral Checks	24867	1

### 6-D: HIGH CAPACITY THERMOSTATIC MIXING VALVES

#### HG115 LEAD FREE HIGH CAPACITY (ASSE 1017 & CSA B 125.3)

3/4" HG115 with Threaded NPT Connections and Integral Checks	24522	1
3/4" HG115 with Sweat Connections and Integral Checks	24519	1
1" HG115 with Sweat Connections and Integral Checks	24520	1
1-1/4" HG115 with Sweat Connections and Integral Checks	24521	1

### 6-E: SHUT-OFF THERMOSTATIC MIXING VALVES

#### HEATGUARD TAFR LEAD FREE SHUT-OFF DEVICES (ASSE 1062 & CSA B 125.3)

1/2" Shower Device	24718	1
1/2" Tap Device (for Faucet Spout)	24719	1

### 6-F: MASTER DISTRIBUTION THERMOSTATIC MIXING VALVES

#### MASTERGUARD 800 SERIES HIGH CAPACITY LEAD FREE (ASSE 1017 & CSA B 125.3)

Masterguard 830 3/4" X 1"	24539	1
Masterguard 840 1" X 1-1/4"	24540	1
Masterguard 850 1-1/4" X 1-1/2"	24541	1
Masterguard 860 1-1/2" X 2"	24542	1

### 6-G: THERMOSTATIC MIXING VALVE ACCESSORIES

#### TEMPERATURE GAUGE

Temperature Gauge for Heatguard 110-D, 110-HX, 115, 160	24412	1
---	-------	---

\*While Supplies Last.



PRODUCT DESCRIPTION	PART NUMBER	QTY/ BAG
<b>SECTION 7: CASH ACME RELIEF VALVES</b>		
<b>7-A: T&amp;P RELIEF VALVES</b> (FOR ADDITIONAL PRESSURE SETTINGS CONTACT CUSTOMER SERVICE)		
<b>NCLX RESIDENTIAL TEMPERATURE &amp; PRESSURE RELIEF VALVES</b> (VALVES WITH EXTENDED INLETS: NCLX-5L = 2-3/32", NCLX-LS = 2-5/8", NCLX-5LX = 2-1/3", NCLX-A = 3-1/3" SHANK LENGTH MEASURED FROM BOTTOM OF OUTLET. ELEMENT LENGTHS: 1 = 1", 5 = 4", 8 = 8". ELEMENT LENGTHS ARE NOT EXACT MEASUREMENTS. CONTACT CUSTOMER SERVICE FOR ADDITIONAL PRESSURE SETS. AGA & ASME CERTIFIED.)		
1/2" NCLX-1	16483-0150	1
3/4" NCLX-1	16487-0150	1
1/2" NCLX-5, AGA only	15912-0150	1
3/4" NCLX-5	15836-0150	1
3/4" NCLX-5L	16132-0175	1
3/4" NCLX-5L	18821-0150	1
3/4" NCLX-5LX	19783-0150	1
3/4" NCLX-LS	19084-0150	1
3/4" NCLX-8	16372-0150	1
3/4" NCLX-A	21714-0150	1
3/4" NCLX-5 for Water Heaters using PEX Pipe ASME, 82° C (180° F) Element	22830-0100	1
3/4" NCLX-5LX for Water Heaters using PEX Pipe ASME, 82° C (180° F) Element	22831-0150	1
3/4" NCLX-A for Water Heaters using PEX Pipe ASME, 82° C (180° F) Element	22832-0150	1
<b>TEMPERATURE AND PRESSURE RELIEF VALVE WITH SHARKBITE OUTLET CONNECTION</b>		
NCLX-5LX w/ SharkBite Outlet Connection	24609-0150	1
<b>LEAD FREE NCLX RESIDENTIAL TEMPERATURE &amp; PRESSURE RELIEF VALVES</b> (VALVES WITH EXTENDED INLETS: NCLX-5L = 2-3/32", NCLX-LS = 2-5/8", NCLX-5LX = 2-1/3", NCLX-A = 3-1/3" SHANK LENGTH MEASURED FROM BOTTOM OF OUTLET. ELEMENT LENGTHS: 1 = 1", 5 = 4", 8 = 8". ELEMENT LENGTHS ARE NOT EXACT MEASUREMENTS. CONTACT CUSTOMER SERVICE FOR ADDITIONAL PRESSURE SETS. AGA & ASME CERTIFIED.)		
1/2" NCLX-1	23277-0150	1
3/4" NCLX-1	23279-0150	1
1/2" NCLX-5, AGA only	23278-0150	1
3/4" NCLX-5	23261-0150	1
3/4" NCLX-5L	23354-0150	1
3/4" NCLX-LS	23268-0150	1
3/4" NCLX-5LX	23266-0150	1
3/4" NCLX-8	23272-0150	1
3/4" NCLX-A	23270-0150	1
<b>FVX &amp; FVMX COMMERCIAL TEMPERATURE AND PRESSURE RELIEF VALVES</b> (HIGH CAPACITY, AGA & ASME LISTED. ELEMENT LENGTHS: 3 = 3", 5 = 4", 8 = 8". ELEMENT LENGTHS ARE NOT EXACT MEASUREMENTS.)		
3/4" FVX-3C Female Inlet	16930-0150	1
3/4" FVX-5C Female Inlet	16931-0150	1
3/4" FVX-8C Female Inlet	16932-0150	1
3/4" FVMX-3C Male Inlet	16933-0150	1
3/4" FVMX-5C Male Inlet	16934-0150	1
3/4" FVMX-5LS Male Inlet	20682-0150	1
3/4" FVMX-8C Male Inlet	16935-0150	1
3/4" FVMX-1LS Male Inlet, Long Shank	20113-0150	1
1" FVX-3C Female Inlet	16936-0150	1
1" FVX-5C Female Inlet	16937-0150	1





PRODUCT DESCRIPTION	PART NUMBER	QTY / BAG
1" FVX-5L Female Inlet	15638-0150	1
1" FVX-8L Female Inlet	17354-0150	1
1" FVMX-3C Male Inlet	16938-0150	1
1" FVMX-5C Male Inlet	16939-0150	1
1" FVMX-3LS Male Inlet, Long Shank	19784-0150	1
1" FVMX-4LS Male Inlet, Long Shank	22894-0150	1
1-1/4" X 1" FVMX-4L Male Inlet, Long Shank	15672-0150	1
1-1/2" FVX-4 Female Inlet, Long Shank	16221-0150	1
2" X 1-1/2" FVMX-3 Male Inlet	16225-0150	1
<b>LEAD FREE FVX &amp; FVMX COMMERCIAL TEMPERATURE AND PRESSURE RELIEF VALVES</b> (HIGH CAPACITY, AGA & ASME LISTED. ELEMENT LENGTHS: 3 = 3", 5 = 4", 8 = 8". ELEMENT LENGTHS ARE NOT EXACT MEASUREMENTS.)		
3/4" FVX-3C Female Inlet	23258-0150	1
3/4" FVX-5C Female Inlet	23256-0150	1
3/4" FVX-8C Female Inlet	23355-0150	1
3/4" FVMX-3C Male Inlet	23274-0150	1
3/4" FVMX-5C Male Inlet	23255-0150	1
3/4" FVMX-8C Male Inlet	23275-0150	1
3/4" FVMX-1LS Male Inlet, Long Shank	23260-0150	1
1" FVX-3C Female Inlet	23259-0150	1
1" FVX-5C Female Inlet	23931-0150	1
1" FVX-5L Female Inlet	23257-0150	1
1" FVX-8L Female Inlet	23273-0150	1
1" FVMX-3C Male Inlet	23253-0150	1
1" FVMX-5C Male Inlet	23276-0150	1
1-1/4" X 1" FVMX-4L Male Inlet, Long Shank	23934-0150	1
1-1/2" FVX-4 Female Inlet, Long Shank	23935-0150	1
2" X 1-1/2" FVMX-3 Male Inlet	23936-0150	1

#### 7-B: PRESSURE ONLY RELIEF VALVES (FOR ADDITIONAL PRESSURE SETTINGS CONTACT CUSTOMER SERVICE.)

##### FWL-2 PRESSURE RELIEF VALVES (PRESSURE ONLY)

1/2" FWL-2 Pressure Only	14721-0150	1
3/4" FWL-2 Pressure Only, AGA & ASME	14737-0150	1

##### LEAD FREE FWL-2 PRESSURE RELIEF VALVES (PRESSURE ONLY)

3/4" FWL-2 Pressure Only, AGA & ASME Lead Free	23343-0150	1
--	------------	---

##### FWOL PRESSURE ONLY RELIEF VALVES WITHOUT LIFT LEVER (FWL-2 WITHOUT LIFT LEVER)

3/4" Pressure Only, Male Inlet / Female Outlet without Lift Lever	22834-0125	1
3/4" Pressure Only, Male Inlet / Female Outlet without Lift Lever	22835-0100	1
3/4" Pressure Only, Male Inlet / Female Outlet without Lift Lever	22836-0075	1
1/2" Pressure Only, Male Inlet / Female Outlet without Lift Lever	22862-0125	1
1/2" Pressure Only, Male Inlet / Female Outlet without Lift Lever	22863-0100	1
1/2" Pressure Only, Male Inlet / Female Outlet without Lift Lever	22864-0075	1

PRODUCT DESCRIPTION	PART NUMBER	QTY/ BAG
<b>F-30, F-82 ASME PRESSURE RELIEF VALVES</b> (PRESSURE ONLY, FOR HOT WATER, HIGH CAPACITY)		
3/4" F-30 set at 30 psi	20166-0030	1
3/4" F-30 FIP X FIP set at 30 psi	22887-0030	1
3/4" F-82 Bronze Body with Lever set at 30 psi	13570-0030	1
3/4" F-82 Bronze Body with Lever set at 50 psi	13570-0050	1
3/4" F-82 Bronze Body with Lever set at 75 psi	13570-0075	1
3/4" F-82 Bronze Body with Lever set at 100 psi	13570-0100	1
3/4" F-82 Bronze Body with Lever set at 125 psi	13570-0125	1
3/4" F-82 Bronze Body with Lever set at 150 psi	13570-0150	1
1" F-82 Bronze Body with Lever set at 30 psi	15673-0030	1
1" F-82 Bronze Body with Lever set at 50 psi	15673-0050	1
1" F-82 Bronze Body with Lever set at 75 psi	15673-0075	1
1" F-82 Bronze Body with Lever set at 100 psi	15673-0100	1
1" F-82 Bronze Body with Lever set at 125 psi	15673-0125	1
1" F-82 Bronze Body with Lever set at 150 psi	15673-0150	1
1-1/4" F-82 Bronze Body with Lever set at 50 psi	16174-0050	1
1-1/4" F-82 Bronze Body with Lever set at 100 psi	16174-0100	1
1-1/4" F-82 Bronze Body with Lever set at 150 psi	16174-0150	1
1-1/2" F-82 Bronze Body with Lever set at 50 psi	16189-0050	1
1-1/2" F-82 Bronze Body with Lever set at 100 psi	16189-0100	1
1-1/2" F-82 Bronze Body with Lever set at 150 psi	16189-0150	1
2" F-82 Bronze Body with Lever set at 50 psi	16204-0050	1
2" F-82 Bronze Body with Lever set at 100 psi	16204-0100	1
2" F-82 Bronze Body with Lever set at 150 psi	16204-0150	1
<b>LEAD FREE F-30, F-82 ASME PRESSURE RELIEF VALVES</b> (PRESSURE ONLY, FOR HOT WATER, HIGH CAPACITY)		
3/4" F-30 set at 30 psi	23344-0030	1
3/4" F-82 Bronze Body with Lever set at 30 psi	23341-0030	1
3/4" F-82 Bronze Body with Lever set at 50 psi	23341-0050	1
3/4" F-82 Bronze Body with Lever set at 75 psi	23341-0075	1
3/4" F-82 Bronze Body with Lever set at 100 psi	23341-0100	1
3/4" F-82 Bronze Body with Lever set at 125 psi	23341-0125	1
3/4" F-82 Bronze Body with Lever set at 150 psi	23341-0150	1
1" F-82 Bronze Body with Lever set at 30 psi	23356-0030	1
1" F-82 Bronze Body with Lever set at 50 psi	23356-0050	1
1" F-82 Bronze Body with Lever set at 75 psi	23356-0075	1
1" F-82 Bronze Body with Lever set at 100 psi	23356-0100	1
1" F-82 Bronze Body with Lever set at 125 psi	23356-0125	1
1" F-82 Bronze Body with Lever set at 150 psi	23356-0150	1
1-1/4" F-82 Bronze Body with Lever set at 50 psi	23937-0050	1
1-1/4" F-82 Bronze Body with Lever set at 100 psi	23937-0100	1
1-1/4" F-82 Bronze Body with Lever set at 150 psi	23937-0150	1
1-1/2" F-82 Bronze Body with Lever set at 50 psi	23938-0050	1
1-1/2" F-82 Bronze Body with Lever set at 100 psi	23938-0100	1
1-1/2" F-82 Bronze Body with Lever set at 150 psi	23938-0150	1
2" F-82 Bronze Body with Lever set at 50 psi	23939-0050	1



PRODUCT DESCRIPTION	PART NUMBER	QTY/ BAG
2" F-82 Bronze Body with Lever set at 100 psi	23939-0100	1
2" F-82 Bronze Body with Lever set at 150 psi	23939-0150	1
<b>F-95 ASME PRESSURE RELIEF VALVES (PRESSURE ONLY, FOR HOT WATER, IRON BODY)</b>		
3/4" X 1" F-95 Iron Body with Lever set at 30 psi	19497-0030	1
3/4" X 1" F-95 Iron Body with Lever set at 50 psi	19497-0050	1
3/4" X 1" F-95 Iron Body with Lever set at 75 psi	19497-0075	1
1" X 1-1/4" F-95 Iron Body with Lever set at 30 psi	19499-0030	1
1" X 1-1/4" F-95 Iron Body with Lever set at 50 psi	19499-0050	1
1" X 1-1/4" F-95 Iron Body with Lever set at 75 psi	19499-0075	1
1-1/4" X 1-1/2" F-95 Iron Body with Lever set at 30 psi	19501-0030	1
1-1/4" X 1-1/2" F-95 Iron Body with Lever set at 50 psi	19501-0050	1
1-1/4" X 1-1/2" F-95 Iron Body with Lever set at 75 psi	19501-0075	1
1-1/2" X 2" F-95 Iron Body with Lever set at 30 psi	19503-0030	1
1-1/2" X 2" F-95 Iron Body with Lever set at 50 psi	19503-0050	1
1-1/2" X 2" F-95 Iron Body with Lever set at 75 psi	19503-0075	1
2" X 2-1/2" F-95 Iron Body with Lever set at 30 psi	19505-0030	1
2" X 2-1/2" F-95 Iron Body with Lever set at 50 psi	19505-0050	1
2" X 2-1/2" F-95 Iron Body with Lever set at 75 psi	19505-0075	1
<b>F &amp; FW SERIES RELIEF VALVES</b>		
1/2" F Pressure Only, Male Inlet / Female Outlet (25-200 psi)	07420-0150	1
1/2" X 3/8" FP Pressure Only, Male Inlet / 3/8" Female Outlet (25-200 psi)	07410-0150	1
1/2" FW Pressure Only (15-200 psi)	09553-0125	1
3/4" FW Pressure Only (15-200 psi)	09554-0125	1
<b>LEAD FREE FWC ADJUSTABLE PRESSURE RELIEF VALVES (25-175 PSI, CALIBRATED STEM)</b>		
1/2" Pressure Only	09563-0125LF	1
3/4" Pressure Only	09564-0125LF	1

**7-C: VACUUM RELIEF VALVES****LEAD FREE VR-801 VACUUM RELIEF VALVES**

1/2" Drilled Vent, with Dust Cover	22397-0000LF	1
3/4" Drilled Vent, with Dust Cover	22398-0000LF	1

**SECTION 8: CASH ACME BACKFLOW PREVENTION \*\***

\*\*NOT ALL PRODUCTS AVAILABLE IN CANADA.

**8-A: VACUUM BREAKERS****V-3 VACUUM BREAKERS HOSE BIBB TYPE**

3/4" V-3 Vacuum Breaker, Hose Bibb Type with Locking Screw	17148-0000	1
3/4" V-3C, Vacuum Breaker, Hose Bibb Type, Chrome Plated	17195-0000	1

**V-3 LEAD FREE VACUUM BREAKERS HOSE BIBB TYPE**

3/4" V-3, Vacuum Breaker, Hose Bibb Type with Locking Screw	17148-0000LF	1
3/4" V-3C, Vacuum Breaker, Hose Bibb Type, Chrome Plated	17195-0000LF	1

**VB-222 VACUUM BREAKERS (SELF DRAINING, FREEZE PROOF)**

3/4" VB-222, Vacuum Breaker, Self Draining with Locking Screw**	19600-0000	1
3/4" VB-222C, Chrome Plated Vacuum Breaker, Self Draining with Locking Screw**	21896-0000	1

PRODUCT DESCRIPTION	PART NUMBER	QTY/ BAG
<b>VB-222 LEAD FREE VACUUM BREAKERS (SELF DRAINING, FREEZE PROOF)</b>		
3/4" VB-222, Vacuum Breaker, Self Draining with Locking Screw	19600-0000LF	1
3/4" VB-222C, Chrome Plated Vacuum Breaker, Self Draining with Locking Screw	21896-0000LF	1
<b>V-101 NON-POTABLE ANTI-SIPHON VACUUM BREAKERS</b>		
1/2" V-101, Anti-Siphon, Brass, 100 °C (212 °F) max**	17383-0000	1
3/4" V-101, Anti-Siphon, Brass, 100 °C (212 °F) max**	17384-0000	1
<b>V-101 LEAD FREE ANTI-SIPHON VACUUM BREAKERS</b>		
1/2" V-101, Anti-Siphon, Brass, 100 °C (212 °F) max**	17383-0000LF	1
3/4" V-101, Anti-Siphon, Brass, 100 °C (212 °F) max**	17384-0000LF	1
1" V-101, Anti-Siphon, Brass, 100 °C (212 °F) max**	17385-0000LF	1
1/2" V-101C, Anti-Siphon, Chrome, 100 °C (212 °F) max**	17389-0000LF	1
3/4" V-101C, Anti-Siphon, Chrome, 100 °C (212 °F) max**	17390-0000LF	1



<b>8-B: DUAL CHECK BACKFLOW PREVENTERS</b>		
<b>BF SERIES - LEAD FREE DUAL CHECK BACKFLOW PREVENTER</b>		
3/4" BF1, Dual Check, FNPT Union Inlet & FNPT Outlet	BF13434	1
3/4" BF1, Dual Check, SharkBite Inlet & Outlet	BF13434SB	1
1" BF1, Dual Check, FNPT Union Inlet & FNPT Outlet	BF10101	1
1" BF1, Dual Check, SharkBite Inlet & Outlet	BF10101SB	1
1" X 3/4" BF5, Dual Check, Meter Swivel Nut Inlet, FNPT Outlet	BF5M0134	1
1" X 3/4" BF5, Dual Check, Meter Swivel Nut Inlet, SharkBite Outlet	BF5M0134SB	1
1/4" X 1" BF5, Dual Check, Meter Swivel Nut Inlet, FNPT Outlet	BF5M1401	1
1-1/4" X 1" BF5, Dual Check, Meter Swivel Nut Inlet, SharkBite Outlet	BF5M1401SB	1
<b>BF SERIES - NON-POTABLE DUAL CHECK BACKFLOW PREVENTER</b>		
3/4" BF1, Dual Check, Threaded Union Inlet**	17217-0000	1
1" BF1, Dual Check, Threaded Union Inlet**	17218-0000	1
1" X 3/4" BF5, Dual Check, Meter Swivel Nut Union Inlet Lead Free	22343-0000LF	1
<b>BFP SERIES - LEAD FREE CONTINUOUS TYPE BACKFLOW PREVENTER WITH ATMOSPHERIC VENT</b>		
1/2" BFP, Continuous Type, Female Union Inlet & Outlet**	21574-0000LF	1
3/4" BFP, Continuous Type, Female Union Inlet & Outlet**	21575-0000LF	1
1/2" BFP, Continuous Type, Copper Sweat Union Inlet & Outlet**	22760-0000LF	1
3/4" BFP, Continuous Type, Copper Sweat Union Inlet & Outlet Lead Free**	22762-0000LF	1
<b>PVB NON-POTABLE (ASSE)</b>		
3/4" PVB, Pressure Vacuum Breaker with Check Valve	B9500	1
1" PVB, Pressure Vacuum Breaker with Check Valve	B9501	1

\*While Supplies Last.







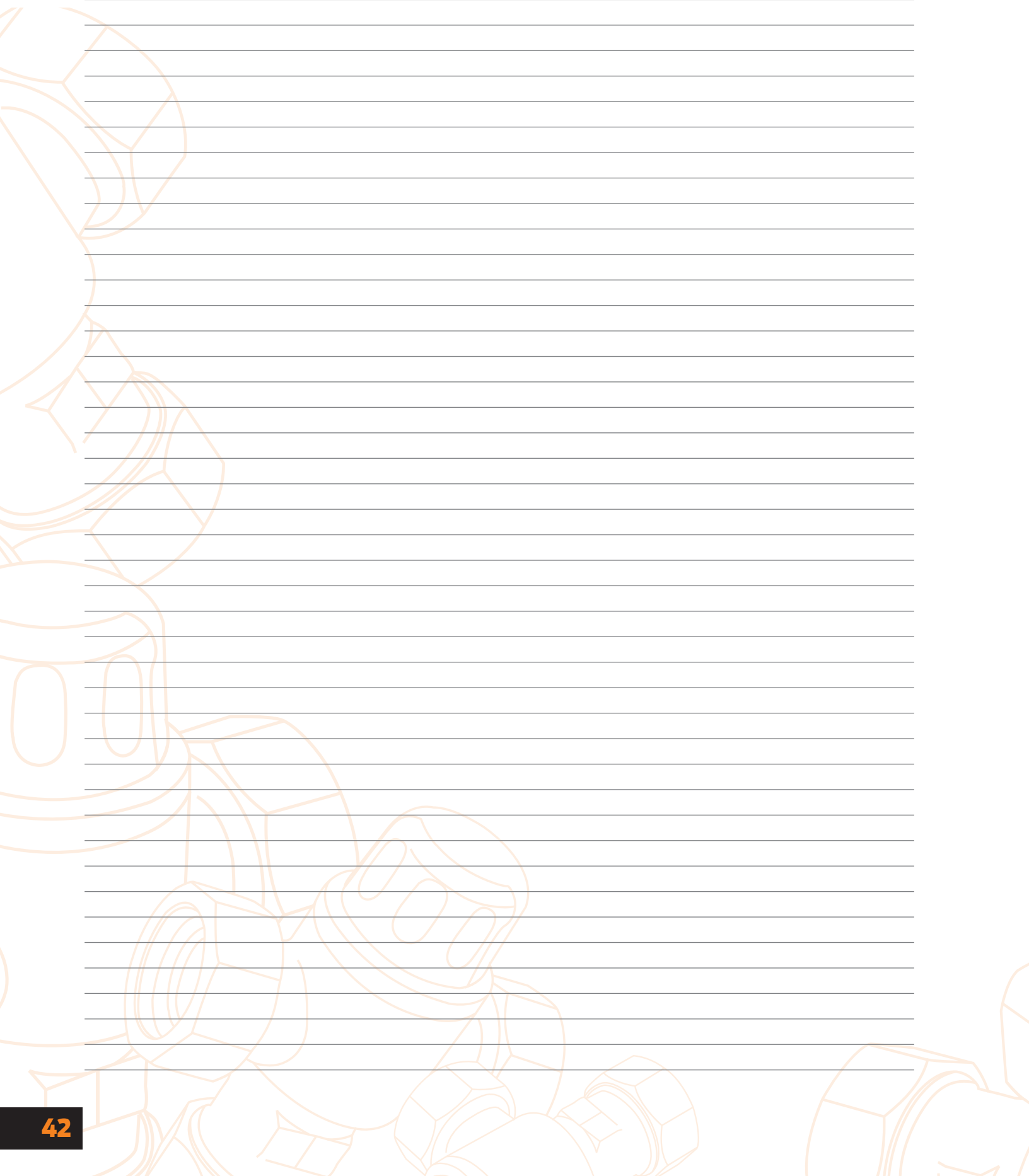
PRODUCT DESCRIPTION	PART NUMBER	QTY/ BAG
<b>SECTION 9: CASH ACME GENERAL PLUMBING &amp; HEATING PRODUCTS</b>		
<b>9-A: PLUMBING PRODUCTS</b>		
<b>WASHING MACHINE SHUT-OFF VALVES</b>		
1/2" WM-1 Male Threaded (Non-Potable)	16962-0000	1
1/2" WM-2 Copper Sweat (Non-Potable)	17087-0000	1

<b>9-B: HEATING PRODUCTS</b>		
<b>NON-POTABLE A SERIES BOILER FEED VALVES (AB-40 &amp; A-43 BRONZE BODY, A-89 IRON BODY)</b>		
3/4" A-41 Boiler Feed Valves	20661-0012	1
1/2" AB-40 Combo Union, In-Built Bypass	12214-0014	1
1/2" A-89U, Single for Water	23370-0014	1
1/2" A-89DU, Double for Water	23371-0014	1
2" Air Purger	24086	1
4" Air Purger flanged	24089	1
3/4" A-41 Boiler Feed Valves	23099-0012	1
<b>NON-POTABLE BFAC</b>		
1/2" BFA Single Union Sweat Combination Backflow Preventer/PRV	23029-0014	1
<b>NON-POTABLE CBL DUAL CONTROL FOR HOT WATER BOILERS (DELUXE MODEL)</b>		
1/2" CBL Bronze Body (5 story)	02323-0005	1
<b>NON-POTABLE CQ, CR DUAL CONTROL FOR HOT WATER BOILERS (ECONOMY MODEL)</b>		
1/2" CQ-M Bronze Body, Union Inlet (specify story)	07045-0002	1
1/2" CR Iron Body, Threaded, Rapid Fill	18394-0002	1
1/2" CRC Iron Body, Copper Sweat, Rapid Fill	18398-0002	1
<b>NON-POTABLE AIR SEPARATORS*</b>		
1/2" Air Separator	24077	1
3/4" Air Separator	24078	1
1" Air Separator	24079	1
1-1/4" Air Separator	24080	1
1-1/2" Air Separator	24081	1
2" Air Separator	24082	1
<b>NON-POTABLE AP SERIES AIR PURGERS*</b>		
1" Air Purger	24083	1
1-1/4" Air Purger	24084	1
1-1/2" Air Purger	24085	1
2-1/2" Air Purger	24087	1
<b>NON-POTABLE AP SERIES AIR VENTS</b>		
1/8" Air Vent, Brass	24090	1
1/4" Air Vent, Brass	24091	1

\*While Supplies Last.



## NOTES





# FREQUENTLY ASKED QUESTIONS

## FOR USING SHARKBITE FITTINGS

### CAN I USE SHARKBITE FOR ANYTHING OTHER THAN POTABLE WATER?

Yes, in addition to potable water applications, SharkBite is also certified for radiant hydronic heating applications (up to 93°C/200°F). NOTE: Glycol mixture for hydronics is acceptable up to and including 100%.

### CAN SHARKBITE BE USED REPEATEDLY?

Fittings can be reused for testing purposes but any fitting used repeatedly for testing must not then be used in a permanent position. The de-mount function of the fitting is designed for rectifying issues during installation or modification to existing plumbing work. It is not designed to be disconnected on a daily or weekly basis.

### DO YOU NEED THE DISCONNECT CLIP TO REMOVE SHARKBITE FITTINGS?

Yes, the SharkBite disconnect clip or tongs are required to properly remove fittings in the SharkBite range.

### WHAT TYPES OF PIPE MATERIAL CAN SHARKBITE FITTINGS BE USED WITH?

SharkBite fittings are certified for use with copper, PEX, CPVC and PE-RT only. Specific fittings for polybutylene and PVC are available on pages 6-7.

### CAN A SHARKBITE FITTING BE ROTATED ON A PIPE?

Yes, the fitting can be rotated after assembly on a pipe and will not affect the integrity of the joint.

### ARE SHARKBITE FITTINGS APPROVED FOR UNDERGROUND USE?

Fittings should be wrapped with an impervious material, chloride-free tape or tightly wrapped and sealed insulation to prevent direct contact with the backfill. Backfill should be free of rocks, debris or any sharp objects that may cause damage through impact or abrasion. NOTE: As with any plumbing project subject to inspection, it is always important to reference your local plumbing code.

### WHAT IS THE DIFFERENCE BETWEEN RED, WHITE, BLUE, AND ORANGE COLORED PEX PIPE?

Red, White, and Blue PEX pipe are exactly the same, the different colors allow you to identify individual lines such as hot and cold. All three colors are certified for potable water applications while the Orange pipe is an oxygen barrier PEX pipe used for hydronic heating applications.

### WHAT ARE THE MAXIMUM TEMPERATURE AND PRESSURE RATINGS FOR SHARKBITE FITTINGS?

SharkBite fittings are certified to 200 psi and 93°C (200°F).

### HOW WELL DO SHARKBITE JOINTS HOLD UP TO FREEZING TEMPERATURES?

Neither brass nor metal fittings should be subject to freezing temperatures – SharkBite push-to-connect and Barb fittings are no different. Freezing temperatures may cause SharkBite fittings to fail.

### DO SHARKBITE FITTINGS LEAK?

In general, SharkBite fittings only leak due to one of three reasons:

1. The pipe was not properly deburred prior to installation.
2. The pipe was not properly inserted.
3. Damages, marks or debris on the OD of the pipe.

### IS THE STIFFENER NECESSARY FOR COPPER AND CPVC AND CAN THE STIFFENER BE REMOVED?

The stiffener is necessary for use with PEX pipe. It is not required for copper or CPVC, however it is not necessary to remove stiffener from the fitting.

### WHAT IS THE INSERTION DEPTH FOR THE SHARKBITE FITTINGS?

Insertion depth will depend on the size of the fitting:

- 1/4" (3/8" OD) Pipe Insertion Depth = 3/4"
- 3/8" (1/2" OD) Pipe Insertion Depth = 3/4"
- 1/2" Pipe Insertion Depth = 7/8"
- 5/8" Pipe Insertion Depth = 1"
- 3/4" Pipe Insertion Depth = 1"
- 1" Pipe Insertion Depth = 1-1/4"

### WHAT IS THE INSERTION DEPTH FOR THE SHARKBITE LARGE DIAMETER FITTINGS?

Insertion depth will depend on the size of the fitting:

- 1-1/4" Pipe Insertion Depth = 2"
- 1-1/2" Pipe Insertion Depth = 2-1/4"
- 2" Pipe Insertion Depth = 2-1/2"

### HOW CLOSE CAN I SOLDER/SWEAT COPPER NEAR A SHARKBITE CONNECTION?

Do NOT solder next to SharkBite connection. If you are soldering/sweating copper pipe, solder/sweat all connections first and then make the SharkBite connections.

### HOW DO I KNOW IF ALL CONNECTIONS ARE MADE CORRECTLY?

Always test with water or air on completion and before covering the pipe.

### WHAT STEPS SHOULD BE TAKEN FOR A PIPE THAT WILL NOT ENGAGE WITH A SHARKBITE FITTING?

If the pipe is difficult to insert or will not engage into the fitting, do not force the connection! Simply remove, and check for obstructions.

### DO SHARKBITE CONNECTIONS REQUIRE ADDITIONAL LUBRICATION?

The O-ring, a key component of the SharkBite fitting, is pre-lubricated during manufacturing and no additional lubricants need to be applied.



# TERMS AND CONDITIONS OF SALE

As at the time of printing, Minimum Billing, Shipping Allowance and Return Goods Policy are as below. Please check the website for updated terms and conditions.

- **MINIMUM BILLING:** A minimum billing charge of \$100.00 applies to shipments.
- **SHIPPING ALLOWANCE:** All sales are F.O.B. shipping point. Shipments of less than the amount listed below for the respective product groups are “prepaid and add.” Shipments greater than those listed are “prepaid” when made at the lowest motor carrier rates, as determined by us, to all destinations within Canada.

PEX tubing	\$3,000
All other products	\$1,700

- **RETURN GOOD POLICY:** No material shall be returned without an R.G.A. number as assigned by RWC Customer Service. When credit is issued it will be at the price charged or current price if lower, less all applicable handling charges and fees (generally a minimum of 20%). Products which are obsolete or made to special order are not refundable.

## LEAD FREE\*



In January 2014 a new Federal law came into effect that introduced a lead-free requirement across the country.

The SharkBite push-to-connect range and the SharkBite PEX/BARB range are made from lead-free DZR brass and all products were converted as of October 2012.

More information is available on our websites at:

[www.cashacme.ca](http://www.cashacme.ca)

[www.sharkbite.ca](http://www.sharkbite.ca)

In this document, products are marked “Lead Free” or “Non-Potable” as applicable.

- “Lead Free” indicates that a product is suitable for use in an application that is anticipated or intended to deliver water for human consumption.
- “Non-Potable” designates that a product is only suitable for applications that are not anticipated or intended to deliver water for human consumption.

If a product is not marked “Lead Free” or “Non-Potable” it is either:

- Not designed to come into contact with water (e.g. tools, crimp rings, pipe hangers), or
- It is a replacement part or component for a valve or piece of Original Equipment, where it is necessary for the function of that valve or equipment to use the identical specification component with which it was originally designed and certified.

*\* A device is defined as Lead Free if its wetted surface has a weighted average lead content not exceeding 0.25%.*

# LIMITED WARRANTY

## SHARKBITE AND CASH ACME PRODUCTS

### WHAT DOES THIS WARRANTY COVER?

Subject to conditions outlined in this statement, RWC (in the USA, Reliance Worldwide Corporation and in Canada, Reliance Worldwide Corporation (Canada) Inc.) warrants to owners of real property in the United States and Canada that SharkBite and Cash Acme products, when used and installed in accordance with the requirements set forth, shall be free from defects in material and workmanship for the applicable Warranty Period. This Limited Warranty is in effect for installations made after January 1, 2016 and is applicable to products installed in the country in which they were purchased.

Proof of purchase is required to validate the Warranty Period. If proof of purchase is not available, the Warranty Period commencement shall default to the date of manufacture for each product. If the product suspected of a defect does not have a clear date of manufacture on it, a proof of purchase will be required.

### WHAT ARE THE CONDITIONS OF THIS WARRANTY?

1. All products must be installed in accordance with all then applicable codes, good plumbing practice, in accordance with any local, state, provincial or federal requirements, and installed in a potable water or radiant heating application unless a non-potable water service is specifically allowed for in the pertinent product literature.
2. The installer must use construction techniques compliant with then applicable codes to install the product and use the product within the design parameters specified in any installation guidelines and technical notes for the applicable system. This shall include field pressure testing prior to concealing with concrete or by other means and wrapping any brass fitting when buried. Failure to install RWC products according to manufacturer's installation instruction will void all applicable warranties and may result in severe water damage.
3. Products must at all times be used in a manner consistent with their intended use and be used in installations and environments acceptable to their material and design specifications, including not being installed in a system that may operate at temperatures or at pressures that exceed the approved ratings which can be found on the product, packaging or installation instructions.
4. Additional product specific conditions of this Limited Warranty and the Warranty Period are documented in the section entitled "HOW LONG DOES THE LIMITED WARRANTY COVERAGE LAST AND WHAT OTHER SPECIFIC CONDITIONS EXIST FOR EACH PRODUCT?". A condition for SharkBite Connection Systems is that the product must be installed by a licensed professional plumbing contractor.
5. Without limiting the foregoing, this Limited Warranty does not apply and you do not have a right of reimbursement if the product failure or resulting damage is caused by: (a) evidence of tampering, mishandling, neglect, abuse, accidental damage, freeze damage (it is expressly understood that failure as a result of any freezing fluids within the pipes does not constitute a defect in material or workmanship and shall not be covered by this warranty) or unauthorized modifications or repairs that cause damage to warranted products; (b) exposure to harmful, unauthorized, or unanticipated chemicals or substances or corrosive water conditions; (c) exposure to ultraviolet light; (d) faulty installation including failure to follow proper burial instructions; (e) damage from abnormal operating conditions including exposure pressures and temperatures beyond the specified operating range; (f) failure to properly test and pass common testing methods (including pressure testing) after the installation and before the product or system is put in service; (g) components not manufactured or sold by RWC; or (h) acts of nature such as earthquakes, fire, flood or lightning.
6. Although RWC provides a plumbing system to facilitate a complete installation, other manufacturers pipe and/or fittings may be installed in any given installation provided manufacturing of the pipe and/or fittings demonstrates compliance with the applicable ASTM/CSA standards, and the product has been certified by a recognized third-party testing agency. The RWC product in the given installation will continue to be covered under this Limited Warranty although limits on Warranty Period may apply. RWC will be responsible only for proven defects in material or workmanship in RWC products. Problems in products manufactured by another company should be reported to that manufacturer.

### HOW DO YOU GET SERVICE?

In order to be eligible for service under this Limited Warranty you must return the defective product to RWC for inspection and testing within thirty (30) days after detection of alleged failure or defect occurring within applicable Warranty Period (with shipping charges prepaid) to the original place of purchase. If the alleged

defect involves a connection or joint with a RWC product, the fitting must be returned with a section of the pipe still inserted. You must include the model number of the product (if available), the original date of purchase, proof of purchase and the nature of the alleged product failure or defect. Products returned without shipping charges prepaid will be refused. For questions or inquiries, in the U.S. call 1(877)700-4242 and in Canada 1(888)820-0120.

### WHAT WILL RWC DO?

If, after inspection, we find that a product covered by this Limited Warranty has failed due to a defect in material or workmanship during the specified Warranty Period, we will repair or replace, at our sole option, free of charge, the defective product during normal working hours and through a place of business as determined by RWC.

Notwithstanding anything to the contrary in this Limited Warranty, if RWC determines that any damages to the real property in which a defective product was installed were the direct result of a leak or failure caused by a defect in material or workmanship in any RWC product covered by this Limited Warranty and occurring within the first ten years after date of purchase or during the applicable Warranty Period, whichever is shorter, and if reasonable steps were taken to promptly limit or stop the effects of such leak or failure as soon as it was discovered, then RWC will reimburse the property owner for the reasonable costs of repairing or replacing such damaged real property to include flooring, drywall and painting and other real property damaged by the leak directly caused by the allegedly defective RWC product. Except as specified above or otherwise specifically authorized in writing by RWC, RWC shall not pay for any costs or expenses for transportation, relocation, labor, repairs or any other work associated with removing and/or returning failed or defective products or installing replacement products.

This shall constitute the sole and exclusive remedy for any defective product.

### WHAT DOES THIS LIMITED WARRANTY NOT COVER?

RWC shall not be responsible for any other incidental, indirect, contingent, special or consequential damages, including without limitation, economic loss, lost profits or the cost of repairing or replacing other property which is damaged if these warranted products do not work properly, other costs resulting from labor charges, delays, vandalism, negligence, fouling caused by foreign material, damage from adverse water conditions, adverse chemical environments, or any other circumstances over which RWC has no control. This limitation applies even if RWC could have foreseen or has been advised of the possibility of these damages. This Limited Warranty shall be invalidated by any abuse, misuse, misapplication or improper installation of the product. Any remaining warranty coverage may not be assigned or transferred after the period ending ten years following the installation. RWC does not guarantee or in any way warrant the integrity or workmanship of the contractor/installer.

### MISCELLANEOUS

Some States/Provinces do not allow limitations on how long an implied warranty lasts, and some States/Provinces do not allow the exclusion or limitation of incidental or consequential damages. Therefore, the above limitations may not apply to you. This Limited Warranty gives you specific legal rights, and you may have other rights that vary from State/Province to State/Province. You should consult applicable State/Provincial laws to determine your rights.

SO FAR AS IS CONSISTENT WITH APPLICABLE STATE/ PROVINCIAL/ FEDERAL LAW, THE EXPRESS WARRANTY SET FORTH HEREIN IS THE ONLY WARRANTY GIVEN BY RWC WITH RESPECT TO THE SHARKBITE AND CASH ACME PRODUCTS AND RWC MAKES NO OTHER WARRANTIES, EXPRESSED OR IMPLIED, AND HEREBY SPECIFICALLY DISCLAIMS ALL OTHER WARRANTIES, EXPRESSED OR IMPLIED, INCLUDING BUT NOT LIMITED TO THE IMPLIED WARRANTIES OF MERCHANTABILITY AND FITNESS FOR A PARTICULAR PURPOSE.

This Limited Warranty and any claims arising from breach of contract, breach of warranty, tort, or any other claim arising from sale or use of RWC's products shall be governed and construed under the laws of the State of Georgia. No action on the part of RWC under this Limited Warranty shall be construed as an admission of liability of that the product is not fit for its intended use.

## HOW LONG DOES THE LIMITED WARRANTY COVERAGE LAST AND WHAT OTHER SPECIFIC CONDITIONS EXIST FOR EACH PRODUCT?

CLASSIFICATION	PRODUCT CATEGORY	LIMITED WARRANTY PERIOD	CONDITIONS
SharkBite Connection Systems	SharkBite Brass and Poly PEX Barb Fittings in conjunction with SharkBite PEX Pipe and SharkBite Rings/Clamps	Twenty-Five (25) Years	System must be installed by a licensed professional plumbing contractor and include: <ul style="list-style-type: none"> <li>• SharkBite PEX Pipe Only - ASTM F876/CSA B137.5</li> <li>• SharkBite Copper Crimp Rings – ASTM F1807 or F2159</li> <li>• Stainless Steel Clamp Rings – ASTM F2098</li> </ul>
SharkBite and Cash Acme Products	SharkBite Universal Push-to-Connect Fittings and SharkBite Large Diameter Large Diameter Push-to-Connect Fittings in Application with Copper, PEX, CPVC and/or PE-RT	Twenty-Five (25) Years	Must be used with: <ul style="list-style-type: none"> <li>• Copper–ASTM B 88 hard drawn copper tube K, L, and M</li> <li>• PEX–ASTM F876/CSA B137.5</li> <li>• CPVC–ASTM D2846 or CSA B137.6</li> <li>• PE-RT–ASTM F2769</li> </ul>
	SharkBite Universal Push-to-Connect Fittings and SharkBite Large Diameter Large Diameter Push-to-Connect Fittings in Application with HDPE	Five (5) Years	Must be used with: <ul style="list-style-type: none"> <li>• HDPE SDR-9 ASTM D2737</li> </ul>
	SharkBite PEX Pipe	Twenty-Five (25) Years	Must be used with: <ul style="list-style-type: none"> <li>• ASSE 1061, ASTM F1807, ASTM F2098, and/or ASTM F2159 fittings</li> </ul>
	SharkBite Brass PEX Barb Fittings/ Copper Manifold	Five (5) Years	Must be used with Non-SharkBite PEX Pipe and Clamps/Rings that conform to: <ul style="list-style-type: none"> <li>• PEX – ASTM F876/CSA B137.5</li> <li>• Copper Crimp Rings – ASTM F1807</li> <li>• Stainless Steel Clamp Rings – ASTM F2098</li> </ul>
	SharkBite Poly PEX Barb Fittings	Five (5) Years	Must be used with Non-SharkBite PEX Pipe and Clamps/Rings that conform to: <ul style="list-style-type: none"> <li>• PEX – ASTM F876/CSA B137.5</li> <li>• Copper Crimp Rings – ASTM F2159</li> <li>• Stainless Steel Clamp Rings – ASTM F2098</li> </ul>
	SharkBite Tools	One (1) Year	From date of purchase; used in accordance with instructions
	SharkBite and Cash Acme Thermostatic Mixing Valves	Five (5) Years	Must be installed per installation instructions
	Other SharkBite and Cash Acme Valves	Two (2) Years	Must be installed per installation instructions
	SharkBite Accessories (Ball Valves, Supply Hoses, Supply Stops, Supply Valve Box Systems, Kits, Manifolds, etc.)	Two (2) Years	Must be installed per installation instructions

Part Number .....	Page	Part Number .....	Page	Part Number .....	Page	Part Number .....	Page	Part Number .....	Page	Part Number .....	Page	Part Number .....	Page
02323-0005	40	17083	33	22397-0000LF	38	23099-0012	40	23808-0045	12, 27	24436	10	24549	13, 33
07045-0002	40	17087-0000	40	22398-0000LF	38	23100	21	23870	32	24437	11	24609-0150	35
07293-0045	32	17148-0000	38	22427-0045	30	23101	20	23871	32	24438	10	24615LFCA	13
07295-0045	32	17148-0000LF	38	22428-0045	30	23102	20	23880-0045	27	24439	11	24616LFCA	13
07410-0150	38	17195-0000	38	22441LF	11	23103	20	23881-0045	27	24440	10	24617LFCA	13
07420-0150	38	17195-0000LF	38	22461LF	20	23104	20	23882-0045	27	24441	11	24620LF	14
09553-0125	38	17217-0000	39	22462LF	20	23135-0045	29	23883-0045	27	24442	11	24621LF	14
09554-0125	38	17218-0000	39	22463LF	20	23136-0045	29	23884-0045	28	24443	11	24622LF	14
09563-0125LF	38	17354-0150	36	22486LF	11	23137-0045	30	23885-0045	28	24444	11	24623LF	14
09564-0125LF	38	17383-0000	39	22595	32	23138-0045	29	23886-0045	28	24445	11	24626LF	14
10932-0045	31	17383-0000LF	39	22604LF	11	23139-0045	30	23887-0045	28	24446-0045	27	24627LF	14
11176-0045	31	17384-0000	39	22624-0055	31	23140-0045	30	23888-0045	28	24447-0045	28	24628LF	14
11180-0045	31	17384-0000LF	39	22625-0055	31	23141-0045	29	23889-0045	28	24449-0045	12	24629LF	14
11184-0045	31	17385-0000LF	39	22630LF	10	23142-0045	29	23890-0045	28	24450-0045	27	24630LF	14
11250-0045	31	17389-0000LF	39	22631LF	10	23143-0045	30	23891-0045	28	24451-0045	28	24631LF	14
11251-0045	31	17390-0000LF	39	22632LF	10	23144-0045	29	23893-0045	12, 27	24453-0045	12, 27	24632LF	14
11252-0045	31	18394-0002	40	22633LF	10	23145-0045	29	23894-0045	12, 27	24454-0045	32	24633LF	14
11253-0045	31	18398-0002	40	22675-0045	12, 27	23147	30	23896-0060	12, 27	24455-0045	32	24634LF	14
11254-0045	32	18821-0150	35	22760-0000LF	39	23148	30	23898-0045	28	24456-0045	32	24635LF	14
11255-0045	32	19084-0150	35	22762-0000LF	39	23148	32	23899-0045	28	24457-0045	32	24636LF	14
11259	33	19497-0030	38	22783	20	23149	30, 32	23905-0045	28	24458-0045	32	24637LF	14
11260	33	19497-0050	38	22784	20	23155-0045	27	23906-0045	28	24459-0045	32	24638LF	14
11261	33	19497-0075	38	22785	20	23156-0045	28	23907-0045	28	24460-0045	27	24639	33
11262	33	19499-0030	38	22786	20	23157-0045	28	23908-0045	28	24461-0045	27	24656	10
11263	33	19499-0050	38	22787	20	23158-0045	27	23909-0045	28	24462-0045	27	24657	10
11264	33	19499-0075	38	22788	20	23159-0045	28	23910-0045	28	24463-0045	27	24675	21
11488	32	19501-0030	38	22789	20	23160-0045	27	23931-0150	36	24464-0045	28	24676	20
11489	32	19501-0050	38	22790	20	23161-0045	27	23934-0150	36	24465-0045	28	24677	20
11490	32	19501-0075	38	22791	19	23164-0045	27	23935-0150	36	24466-0045	28	24678	20
11491	32	19503-0030	38	22830-0100	35	23165-0045	28	23936-0150	36	24467-0045	28	24680	9
11492	32	19503-0050	38	22831-0150	35	23166-0045	27	23937-0050	37	24468-0045	28	24700-0045	31
11493	32	19503-0075	38	22832-0150	35	23167-0045	27	23937-0100	37	24469-0045	28	24703-0045	31
12214-0014	40	19505-0030	38	22834-0125	36	23168-0045	27	23937-0150	37	24470-0045	28	24706-0045	31
13570-0030	37	19505-0050	38	22835-0100	36	23220	20	23938-0050	37	24471-0045	28	24709-0045	31
13570-0050	37	19505-0075	38	22836-0075	36	23221	20	23938-0100	37	24472-0045	27	24712-0045	31
13570-0075	37	19600-0000	38	22862-0125	36	23251	21	23938-0150	37	24473-0045	27	24715-0045	31
13570-0100	37	19600-0000LF	38	22863-0100	36	23253-0150	36	23939-0050	37	24474-0045	27	24718	34
13570-0125	37	19783-0150	35	22864-0075	36	23255-0150	36	23939-0100	37	24475-0045	27	24719	34
13570-0150	37	19784-0150	36	22887-0030	36	23256-0150	36	23939-0150	37	24476-0045	27	24731LF	9
14511	33	20113-0150	35	22894-0150	36	23257-0150	36	23941-0045	28	24477-0045	27	24732LF	9
14512	33	20166-0030	36	22937	28	23258-0150	36	23942-0045	28	24478-0045	31	24733LF	9
14721-0150	36	20657-0008	32	22938	28	23259-0150	36	23945-0060	12, 27	24480-0045	31	24734LF	9
14737-0150	36	20658-0005	32	22942	28	23260-0150	36	23952-0045	29	24482-0045	31	24735LF	13
15638-0150	35	20661-0012	40	22943	28	23261-0150	35	23953-0045	29	24484-0045	31	24736LF	13
15672-0150	36	20662-0005	32	22999-0045	32	23266-0150	35	23954-0045	29	24486-0045	31	24737LF	13
15673-0030	37	20664-0010	32	23000-0045	32	23268-0150	35	23955-0045	13, 29	24487-0045	31	24832	33
15673-0050	37	20682-0150	35	23029-0014	40	23270-0150	35	23956-0045	13, 29	24501	33	24867	13
15673-0075	37	20778	33	23036LFCA	9	23272-0150	35	23957-0045	30	24502	33	24867	34
15673-0100	37	21574-0000LF	39	23037LFCA	9	23273-0150	36	23964-0045	29	24503	33	24930	10
15673-0125	37	21575-0000LF	39	23048LFCA	9	23274-0150	36	23965-0045	29	24504	13, 33	24931	10
15673-0150	37	21714-0150	35	23049LFCA	9	23275-0150	36	23966-0045	29	24505	13, 33	24932	10
15836-0150	35	21896-0000	38	23050	21	23276-0150	36	23967-0045	29	24506	33	24933	10
15912-0150	35	21896-0000LF	38	23051	21	23277-0150	35	23968-0045	29	24507	33	24934	10
16132-0175	35	22182LFCA	13	23053	21	23278-0150	35	23969-0045	30	24508	33	24935	10
16174-0050	37	22185LFCA	13	23054	21	23279-0150	35	23970-0045	30	24509	33	24936	10
16174-0100	37	22186LFCA	13	23055	21	23336LFCA	9	23994-0055	31	24510	33	24937	10
16174-0150	37	22187LFCA	13	23056LF	19	23337LFCA	9	23995-0055	31	24511	33	24938	10
16189-0050	37	22222LFCA	13	23057LF	19	23341-0030	37	23996-0055	31	24513	34	24939	10
16189-0100	37	22223LFCA	13	23058LF	19	23341-0050	37	23997-0055	31	24514	34	24940	10
16189-0150	37	22224	30	23059LF	19	23341-0075	37	23998-0055	31	24515	34	24963	10
16204-0050	37	22249-0045	29	23060LF	19	23341-0100	37	24077	40	24517	34	24983	9
16204-0100	37	22250-0045	30	23061LF	19	23341-0125	37	24078	40	24518	34	24984	9
16204-0150	37	22263-0045	29	23062LF	19	23341-0150	37	24079	40	24519	34	24985	9
16221-0150	36	22263-0045	30	23063LF	19	23343-0150	36	24080	40	24520	34	24986	9
16225-0150	36	22264-0045	29, 30	23064LF	19	23344-0030	37	24081	40	24521	34	24987	9
16372-0150	35	22266-0045	29, 30	23065	20	23354-0150	35	24082	40	24522	34	25024	11
16483-0150	35	22267-0045	29, 30	23067LF	17	23355-0150	36	24083	40	24524	34	25087	11
16487-0150	35	22304LFCA	13	23068LF	17	23356-0030	37	24084	40	24525	34	25088	11
16930-0150	35	22305LFCA	13	23069	19	23356-0050	37	24085	40	24528	33	25096	11
16931-0150	35	22306LFCA	13	23070	19	23356-0075	37	24086	40	24529	13, 33	25097	11
16932-0150	35	22317-0045	30	23071A10	21	23356-0100	37	24087	40	24530	13, 33	25098	11
16933-0150	35	22321-0045	29	23072A10	21	23356-0125	37	24089	40	24531	34	25099	11
16934-0150	35	22322-0045	30	23073A10	21	23356-0150	37	24090	40	24532	34	25401	20
16935-0150	35	22323-0045	29	23074A10	21	23358-0045	12, 27	24091	40	24533	33	25406	12
16936-0150	35	22324-0045	30	23075A10	21	23370-0014	40	24383-0045	12, 27	24534	34	25484Z	10
16937-0150	35	22331-0045	29	23076A10	21	23371-0014	40	24384-0045	12, 27	24536	33	25484Z	20
16938-0150	36	22332-0045	29	23077	21	23382LF	19	24395	30	24539	34	25485Z25	21
16939-0150	36	22333-0045	29	23078	21	23383	21	24396	30	24540	34	25486Z25	21
16962-0000	40	22343-0000LF	39	23079	21	23489	9	24397	30	24541	34	25490Z	21
17073	33	22391-0055	31	23080	21	23490	9	24398	30	24542	34	25521Z	13
17078	33	22396-0055	31	23081	21	23807-0045	12, 27	24412	34	24548	13, 33	25523	33

Part Number .....Page	Part Number .....Page	Part Number .....Page	Part Number .....Page	Part Number .....Page	Part Number .....Page	Part Number .....Page
25538 ..... 11	S808414128 ..... 6	U412LF ..... 5	U870020 ..... 25	U3568FX12LFCA ..... 8	UC531LF ..... 17	UIP520 ..... 7
25539 ..... 11	S808414135 ..... 6	U416LF ..... 5	U8700100 ..... 25	U3568FX18BLCA ..... 8	UC532LF ..... 17	UIP710 ..... 7
25550LF ..... 13	S808545428 ..... 6	U444LF ..... 5	U8700300 ..... 25	U3568FX18LFCA ..... 8	UC534LF ..... 17	UIP712 ..... 7
25551LF ..... 13	S808545435 ..... 6	U454LF ..... 5	U8700500 ..... 25	U3588FX12LFCA ..... 8	UC594LF ..... 17	UIP714 ..... 7
25552LF ..... 10	S808545441 ..... 6	U462LF ..... 6	U87001000 ..... 25	U3588FX18BLCA ..... 9	UC600LF ..... 15	UIP3008 ..... 7
25553LF ..... 10	S8BV35 ..... 13	U464LF ..... 6	U870P100 ..... 25	U3588FX18LFCA ..... 8	UC605LF ..... 15	UIP3016 ..... 7
25554LF ..... 10	S8BV41 ..... 13	U512LF ..... 6	U870P300 ..... 25	U3588FX24LFCA ..... 8	UC606LF ..... 15	UIP3020 ..... 7
25555LF ..... 10	S8BV54 ..... 13	U514LF ..... 6	U870R5 ..... 24	U3712 ..... 12	UC607LF ..... 15	UIP4008 ..... 7
25558LF ..... 9	S8DC35 ..... 12	U516 ..... 7	U870R10 ..... 24	U4008LF ..... 7	UC608LF ..... 15	UIP4016 ..... 7
25559LF ..... 11	S8DC41 ..... 12	U518LF ..... 6	U870R25 ..... 24	U4016LF ..... 7	UC626LF ..... 16	UIP4020 ..... 7
25560LF ..... 11	S8DC54 ..... 12	U520LF ..... 6	U870R50 ..... 24	U4358LF ..... 10	UC628LF ..... 16	UP008 ..... 18
25561 ..... 11	S8DC354154 ..... 12	U615LF ..... 4	U870R100 ..... 24	U4482LF ..... 6	UC0835 ..... 16	UP016 ..... 18
25562 ..... 11	S8G03 ..... 12	U620LF ..... 4	U870R300 ..... 24	UC006LF ..... 14	UC0084 ..... 16	UP020 ..... 18
25567 ..... 11	S8TL35 ..... 12	U648LF ..... 4	U870R500 ..... 24	UC008LF ..... 14	UC0854 ..... 16	UP058 ..... 18
25568 ..... 11	S8TL41 ..... 12	U656LF ..... 4	U870W5 ..... 24	UC009LF ..... 15	UC952 ..... 20	UP060 ..... 18
25686 ..... 34	S8TL54 ..... 12	U660LF ..... 4	U870W10 ..... 24	UC012LF ..... 14	UC953 ..... 20	UP120 ..... 18
25687 ..... 34	SS3068FLEX18BV ..... 9	U701 ..... 21	U870W25 ..... 24	UC016LF ..... 14	UC954 ..... 20	UP134 ..... 18
25715-0045 ..... 27	SS3086FLEX24LF ..... 8	U702 ..... 12	U870W50 ..... 24	UC020LF ..... 14	UC955 ..... 20	UP138 ..... 18
B9500 ..... 39	SS3088FLEX18BV ..... 9	U706 ..... 12	U870W100 ..... 24	UC057LF ..... 15	UC956 ..... 20	UP140 ..... 18
B9501 ..... 39	SS3088FLEX18LF ..... 8	U708 ..... 12	U870W300 ..... 24	UC058LF ..... 15	UC961 ..... 21	UP248 ..... 18
BFSM0134 ..... 39	SS3088FLEX24LF ..... 8	U710 ..... 12	U870W500 ..... 24	UC060LF ..... 15	UC4006LF ..... 17	UP256 ..... 18
BFSM01345B ..... 14, 39	U004LF ..... 3	U711 ..... 12	U880B5 ..... 24	UC068LF ..... 15	UC4008LF ..... 17	UP260 ..... 18
BFSM1401 ..... 39	U006LF ..... 3	U712 ..... 12	U880B10 ..... 24	UC072LF ..... 15	UC4016LF ..... 17	UP274 ..... 18
BFSM14015B ..... 14, 39	U008LF ..... 3	U713 ..... 12	U880B100 ..... 24	UC088LF ..... 15	UC013522 ..... 15	UP280 ..... 18
BF10101 ..... 39	U009LF ..... 3	U714 ..... 12	U880B300 ..... 24	UC094LF ..... 15	UC013528 ..... 15	UP360 ..... 18
BF101015B ..... 14, 39	U012 ..... 7	U715 ..... 12	U880B500 ..... 24	UC116LF ..... 15	UC014122 ..... 15	UP362 ..... 18
BF13434 ..... 39	U016LF ..... 3	U719LF ..... 6	U8800100 ..... 25	UC118LF ..... 15	UC014128 ..... 15	UP370 ..... 18
BF134345B ..... 14, 39	U020LF ..... 3	U721LF ..... 6	U8800300 ..... 25	UC120LF ..... 15	UC014135 ..... 15	UP374 ..... 18
PM0125B ..... 20	U050LF ..... 3	U722LF ..... 6	U8800500 ..... 25	UC134LF ..... 15	UC015441 ..... 15	UP408 ..... 18
PM0120UP ..... 20	U057 ..... 7	U724LF ..... 6	U880P100 ..... 25	UC0135 ..... 14	UC08352828 ..... 17	UP412 ..... 18
PM0245B ..... 20	U058LF ..... 3	U766LF ..... 4	U880P300 ..... 25	UC138LF ..... 15	UC08353516 ..... 17	UP414 ..... 18
PM024UP ..... 20	U060LF ..... 3	U772LF ..... 4	U880R5 ..... 24	UC139LF ..... 15	UC08353522 ..... 17	UP415 ..... 18
RM22712 ..... 20	U066LF ..... 3	U782LF ..... 9	U880R10 ..... 24	UC140LF ..... 15	UC08353528 ..... 17	UP416 ..... 18
RM22724 ..... 20	U068LF ..... 3	U850G5 ..... 24	U880R100 ..... 24	UC0141 ..... 14	UC08413528 ..... 17	UP444 ..... 18
S80135 ..... 3	U070LF ..... 3	U850G50 ..... 24	U880R300 ..... 24	UC142LF ..... 15	UC08414116 ..... 17	UP454 ..... 18
S80141 ..... 3	U072LF ..... 3	U850W100 ..... 24	U880R500 ..... 24	UC0154 ..... 14	UC08414122 ..... 17	UP514 ..... 18
S80154 ..... 3	U086LF ..... 7	U855B100 ..... 24	U880W5 ..... 24	UC0235 ..... 15	UC08414128 ..... 17	UP518 ..... 18
S80235 ..... 4	U088LF ..... 3	U8550100 ..... 25	U880W10 ..... 24	UC0241 ..... 15	UC08414135 ..... 17	UP520 ..... 18
S80241 ..... 4	U092LF ..... 3	U8550300 ..... 25	U880W100 ..... 24	UC246LF ..... 15	UC08545416 ..... 17	UP526 ..... 18
S80254 ..... 4	U094LF ..... 3	U8550500 ..... 25	U880W300 ..... 24	UC248LF ..... 15	UC08545422 ..... 17	UP527 ..... 18
S80335 ..... 6	U110LF ..... 4	U855R100 ..... 24	U880W500 ..... 24	UC0254 ..... 15	UC08545428 ..... 17	UP532 ..... 18
S80341 ..... 6	U116LF ..... 4	U855W5 ..... 24	U885W20 ..... 24	UC256LF ..... 15	UC08545441 ..... 17	
S80354 ..... 6	U118LF ..... 4	U855W10 ..... 24	U885W100 ..... 24	UC260LF ..... 15	UCF128L ..... 19	
S80435 ..... 6	U120LF ..... 4	U855W50 ..... 24	U890W20 ..... 24	UC272LF ..... 15	UCF128R ..... 19	
S80441 ..... 6	U126 ..... 7	U855W100 ..... 24	U890W100 ..... 24	UC274LF ..... 15	UCF128S ..... 19	
S80454 ..... 6	U134LF ..... 4	U860B5 ..... 24	U895W20 ..... 24	UC278LF ..... 16	UCF128U ..... 19	
S80535 ..... 4	U138LF ..... 4	U860B10 ..... 24	U895W100 ..... 24	UC280LF ..... 16	UCF168L ..... 19	
S80541 ..... 4	U139LF ..... 4	U860B25 ..... 24	U2008-0000LF ..... 14	UC286LF ..... 16	UCF168R ..... 19	
S80554 ..... 4	U140LF ..... 4	U860B50 ..... 24	U2016-0000LF ..... 14	UC341LF ..... 16	UCF168U ..... 19	
S80635 ..... 3	U142LF ..... 4	U860B100 ..... 24	U2020-0000LF ..... 14	UC340LF ..... 16	UCF12128A ..... 19	
S80641 ..... 3	U244LF ..... 4	U860B300 ..... 24	U2276LF ..... 11	UC342LF ..... 16	UCF12128H ..... 19	
S80654 ..... 3	U246LF ..... 4	U860B500 ..... 24	U3001A ..... 15	UC360LF ..... 16	UCF12128V ..... 19	
S80735 ..... 4	U248LF ..... 4	U860020 ..... 25	U3008FX18LFCA ..... 9	UC362LF ..... 16	UCF16128H ..... 19	
S80741 ..... 4	U249LF ..... 5	U8600100 ..... 25	U3008LF ..... 3	UC363LF ..... 16	UCF16128V ..... 19	
S80754 ..... 4	U252 ..... 7	U8600300 ..... 25	U3016FX18LFCA ..... 9	UC364LF ..... 16	UCF16168H ..... 19	
S80835 ..... 5	U256LF ..... 4	U8600500 ..... 25	U3016LF ..... 3	UC370LF ..... 16	UCF16168V ..... 19	
S80841 ..... 5	U260LF ..... 4	U86001000 ..... 25	U3020LF ..... 3	UC374LF ..... 16	UF128L ..... 8	
S80854 ..... 5	U272LF ..... 5	U860P100 ..... 25	U3068FX12LFCA ..... 8	UC408LF ..... 16	UF128R ..... 8	
S8013528 ..... 3	U273 ..... 7	U860P300 ..... 25	U3068FX15LFCA ..... 8	UC412LF ..... 16	UF128S ..... 8	
S8014128 ..... 3	U274LF ..... 5	U860R5 ..... 24	U3068FX18BLCA ..... 9	UC413LF ..... 16	UF128U ..... 8	
S8014135 ..... 3	U276LF ..... 5	U860R10 ..... 24	U3068FX18LFCA ..... 8	UC414LF ..... 16	UF168L ..... 8	
S8015441 ..... 3	U278LF ..... 5	U860R25 ..... 24	U3068FX24LFCA ..... 8	UC415LF ..... 16	UF168R ..... 8	
S8113532F ..... 4	U280LF ..... 5	U860R50 ..... 24	U3086FLEX24LF ..... 9	UC416LF ..... 16	UF168U ..... 8	
S8113532M ..... 4	U281LF ..... 5	U860R100 ..... 24	U3088FX12LFCA ..... 8	UC417LF ..... 16	UF12128A ..... 8	
S8114140F ..... 4	U286LF ..... 5	U860R300 ..... 24	U3088FX15LFCA ..... 8	UC418LF ..... 16	UF12128H ..... 8	
S8114140M ..... 4	U308LF ..... 5	U860R500 ..... 24	U3088FX18BLCA ..... 9	UC434LF ..... 16	UF12128V ..... 8	
S8115450F ..... 4	U314LF ..... 5	U860W5 ..... 24	U3088FX18LFCA ..... 8	UC0435 ..... 17	UF16128H ..... 8	
S8115450M ..... 4	U332LF ..... 5	U860W10 ..... 24	U3088FX24LFCA ..... 8	UC0441 ..... 17	UF16128V ..... 8	
S803353516 ..... 6	U334LF ..... 5	U860W25 ..... 24	U3120LF ..... 4	UC444LF ..... 16	UF16168H ..... 8	
S803353522 ..... 6	U335LF ..... 5	U860W50 ..... 24	U3134LF ..... 4	UC452LF ..... 16	UF16168V ..... 8	
S803353528 ..... 6	U340LF ..... 5	U860W100 ..... 24	U3140LF ..... 4	UC0454 ..... 17	UIP120 ..... 7	
S803414122 ..... 6	U351LFCA ..... 10	U860W300 ..... 24	U3358LF ..... 10	UC454LF ..... 16	UIP134 ..... 7	
S803414128 ..... 6	U358LF ..... 5	U860W500 ..... 24	U3362LF ..... 7	UC512LF ..... 17	UIP140 ..... 7	
S803414135 ..... 6	U359LF ..... 5	U8650300 ..... 25	U3370LF ..... 6	UC514LF ..... 17	UIP363 ..... 7	
S803545428 ..... 6	U360LF ..... 5	U870R5 ..... 24	U3482LF ..... 6	UC518LF ..... 17	UIP364 ..... 7	
S803545435 ..... 6	U362LF ..... 5	U870B10 ..... 24	U3486LF ..... 6	UC520LF ..... 17	UIP371 ..... 7	
S803545441 ..... 6	U363LF ..... 5	U870B25W ..... 24	U3523LF ..... 9	UC526LF ..... 17	UIP372 ..... 7	
S808353516 ..... 6	U364LF ..... 5	U870B50 ..... 24	U3524LF ..... 9	UC527LF ..... 17	UIP375 ..... 7	
S808353522 ..... 6	U366 ..... 7	U870B100 ..... 24	U3525LF ..... 10	UC528LF ..... 17	UIP376 ..... 7	
S808353528 ..... 6	U370LF ..... 5	U870B300 ..... 24	U3531LF ..... 10	UC529LF ..... 17	UIP514 ..... 7	
S808414122 ..... 6	U374LF ..... 5	U870B500 ..... 24	U3537LF ..... 10	UC530LF ..... 17	UIP518 ..... 7	





## Reliance Worldwide Corporation (Canada) Inc.

74 Alex Avenue  
Vaughan, Ontario, L4L 5X1  
Phone: 1-888-820-0120

Sales Inquiries: [canadasales@rwc.com](mailto:canadasales@rwc.com) | Orders: [canadaorders@rwc.com](mailto:canadaorders@rwc.com)  
[www.rwc.com](http://www.rwc.com)



[www.sharkbite.ca](http://www.sharkbite.ca) | [www.cashacme.ca](http://www.cashacme.ca)

MANUFACTURED AND DISTRIBUTED BY RELIANCE WORLDWIDE CORPORATION (CANADA) INC.