

## SPECIFICATION SHEET

### PHOTOCONTROL ACCESSORIES FOR TURN-LOCK CONTROLS

#### APPLICATIONS

##### MOUNTING BRACKET

Utility mounting bracket for 1/2" threaded conduit photocontrols.

##### REPLACEMENT CAPS

5500 replaces photocontrol to change light fixture to always ON. 5500-OC replaces photocontrol to change light fixture to always OFF. Durable materials and gasket provide longevity and weatherproof protection.

##### RECEPTACLE 2223

120-480V 50/60 Hz 15 amp maximum receptacle with 3 color-coded 12" long, #14 power leads, gasket and two mounting screws.

##### RECEPTACLE 2224

120-480V 50/60 Hz 15 amp maximum receptacle with 3 color-coded 12" long, #14 power leads, mounting bracket and one mounting screw.

##### RECEPTACLE 2227

120-480V 50/60 Hz 15 amp maximum receptacle with 3 color-coded 12" long, #14 power leads and 4 color-coded 12" long, #18 signal leads.

##### RECEPTACLE 2421

120-480V 50/60 Hz 15 amp maximum receptacle with color-coded 12" long, #14 leads, plastic housing, lock nut (with 1/2" NPT) and a mounting bracket.

#### MOUNTING BRACKET

DEVICE	CAT. NO.	UPC CODE	DESCRIPTION
--------	----------	----------	-------------

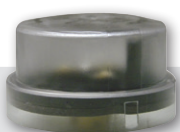


**73866** 62020 Mounting Bracket

#### REPLACEMENT CAPS



DEVICE	CAT. NO.	UPC CODE	DESCRIPTION
--------	----------	----------	-------------



**5500** 61130 Shorting cap, 480VAC max  
1800W Tungsten  
1800VA Ballast

**5500-OC** 61132 Open cap, 480VAC max  
(Black housing)

#### RECEPTACLE cUL<sup>us</sup>

DEVICE	CAT. NO.	UPC CODE	DESCRIPTION
--------	----------	----------	-------------



**2223** 61025 Receptacle with gasket

#### RECEPTACLE cUL<sup>us</sup>

DEVICE	CAT. NO.	UPC CODE	DESCRIPTION
--------	----------	----------	-------------



**2224** 61026 Receptacle and mounting bracket

#### RECEPTACLE cUL<sup>us</sup>

DEVICE	CAT. NO.	UPC CODE	DESCRIPTION
--------	----------	----------	-------------



**2227** 61030 7-Pin Receptacle with gasket and dimming feature

#### RECEPTACLE cUL<sup>us</sup>

DEVICE	CAT. NO.	UPC CODE	DESCRIPTION
--------	----------	----------	-------------



**2421** 61021 Receptacle with plastic housing and bracket

NSi offers many splicing options to complete the pole installation. See the Easy-Splice section of the NSi Product Catalog.

