

# Central Brass

C O M P A N Y

A Division of Pioneer Industries, Inc.

## Installation Guide

### Slow-Close Two Handle Widespread Lavatory Faucet:

- 3127-AN1
- 3127-AVN1
- 3127-DAN1
- 3127-DAVN1



This product meets the following standards:

- ASME A112.18.1
- ANSI A117.1
- ANSI / NSF 61, SECTION 9
- CUPC / IAPMO LISTED / ADA COMPLIANT
- CONTAINS NO MORE THAN 0.25% WEIGHTED AVERAGE LEAD CONTENT

## **Thank You For Choosing Central Brass Products**

Thank you for purchasing this quality product.

Central Brass products are rigorously tested to provide long service under normal conditions. Prior to installation, familiarize yourself with this parts diagram.

Make sure that you have all of the illustrated parts for your Central Brass product before installation.

## **Care Instructions**

Central Brass products are designed and engineered under strict quality standards. The Central Brass Collection of PVD finishes feature a strong and durable surface that will keep your fixture looking exquisite for a lifetime.

To ensure the beautiful appearance of your Central Brass product, please adhere to the following simple care instructions:

- Use clear water to clean the surface of the faucet and dry with a 100% cotton cloth.
- You may also use any non-abrasive wax, along with a soft cotton cloth to brighten the surface and provide future protection of the finish.
- Do not use detergents, harsh cleaners, abrasive cleaners, cloths, and cleaning agents.

## CENTRAL BRASS LIMITED WARRANTY

The Central Brass Company provides to the original consumer the following warranties for Genuine Central Brass manufactured products and components used in commercial or residential applications.

Central Brass Company will replace, free of charge, to the original consumer purchaser, any and all parts that prove defective under normal installation, use, and service. This warranty does not cover damage or defects due to normal wear and tear, misuse, abuse, accident, or improper installation. Replacement parts can be obtained from your local dealer or directly from Central Brass Company. Central Brass Company recommends using a certified plumber for all faucet installation and repair. Dated proof of purchase must accompany all warranty claims.

### **FAUCET WARRANTY**

The Faucet, defined as any metal cast, forged, stamped or formed portion of the product, not including moving parts or other components covered under other Central Brass warranties, is warranted against manufacturing defects for the life of the product.

### **CARTRIDGE WARRANTY**

Genuine Central Brass cartridges incorporated in Central Brass products are warranted against manufacturing defects for a period of five (5) years from the date of purchase.

### **SENSOR FAUCETS**

The mechanics of the Central Brass Sensor Faucets are warranted for five (5) years from the date of installation. The electronics and solenoid are warranted for a period of one (1) year from the date of installation.

### **FINISH WARRANTY - COMMERCIAL**

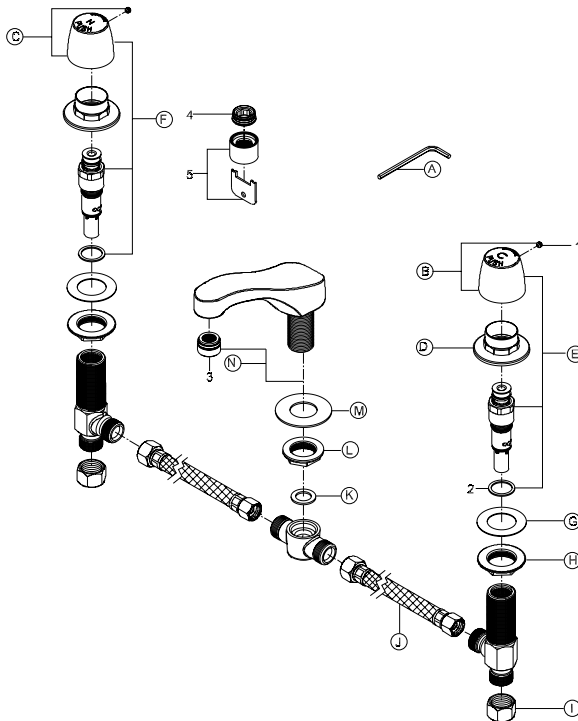
PVD finishes installed in public or commercial areas are warranted not to corrode, tarnish or discolor for a period of five (5) years from date of purchase.

### **FINISH WARRANTY – RESIDENTIAL**

PVD finishes installed in residential use applications are warranted not to corrode, tarnish or discolor for the life of the product.

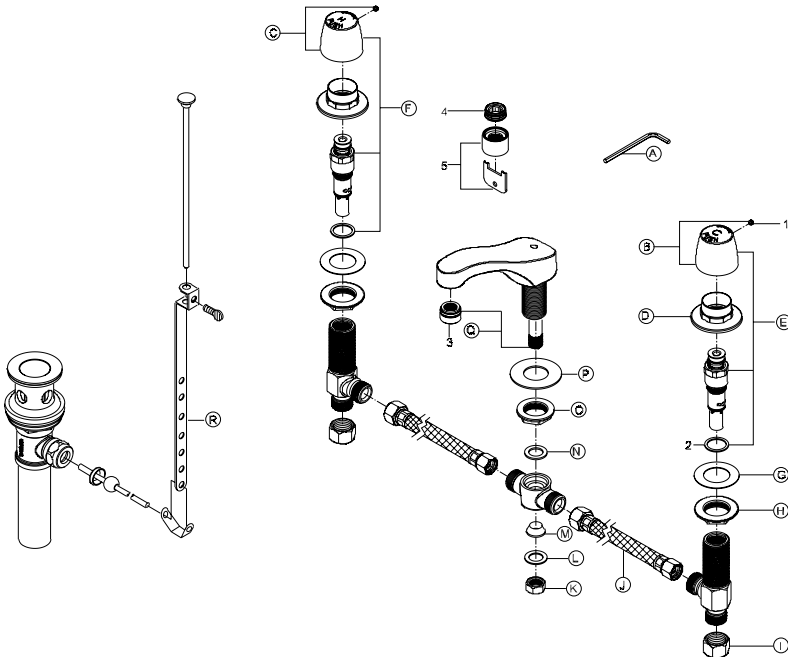
## 3127-AN1/3127-AVN1-Replacement Parts

|   | ITEM#      | DESCRIPTION                             |
|---|------------|---|
| A | 170-WA     | 3/32" Allen Wrench                      |
| B | CS-13002C  | Cold Push Handle                        |
| C | CS-13002H  | Hot Push Handle                         |
| D | 530        | Escutcheon                              |
| E | CS-49017C  | Cold Repair Kit                         |
| F | CS-49017H  | Hot Repair Kit                          |
| G | X491-U     | Gasket (12 Pcs Per Pack)                |
| H | X53-AS     | Lock Nut (6 Pcs Per Pack)               |
| I | X4015      | Coupling Nut (4 Pcs Per Pack)           |
| J | 312-10N    | 10" Flex. Hose Connector                |
| K | X944-N     | Washer (2 Pcs Per Pack)                 |
| L | X53-CZ     | Locknut (6 Pcs Per Pack)                |
| M | X52-S      | Washer (10 Pcs Per Pack)                |
| N | SU-2090-AB | Low Profile Spout                       |
| 1 | X103-HS    | Set Screw (6 Pcs Per Pack)              |
| 2 | X1028-Y    | Washer (2 Pcs Per Pack)                 |
| 3 | 30-L       | Aerator                                 |
| 4 | 166-UB     | Adapter (For 'V' Suffix)                |
| 5 | CS-49004   | Vandal 0.5 GPM Aerator (For 'V' Suffix) |



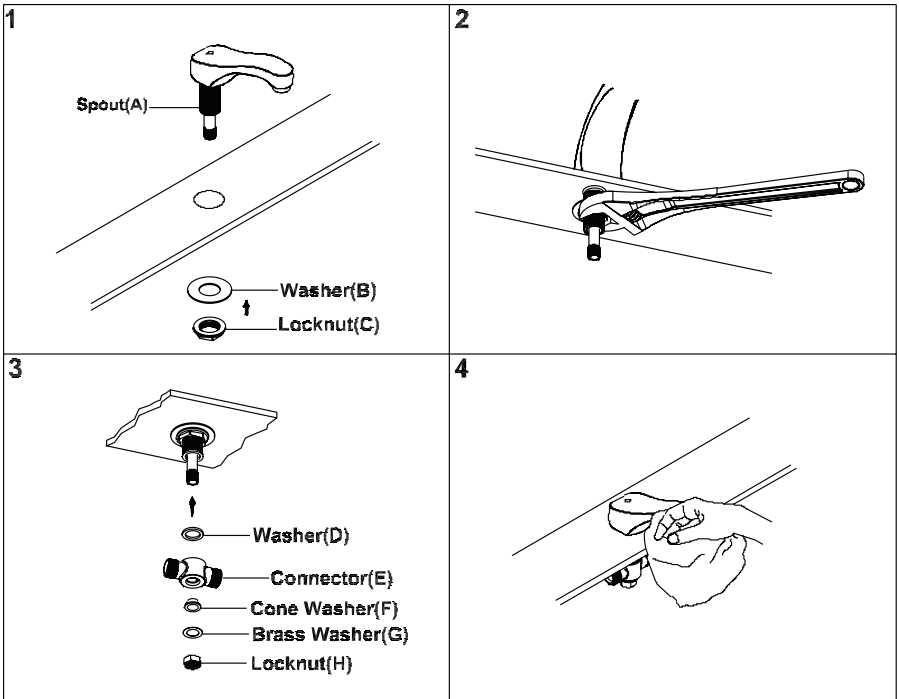
## 3127-DAN1/3127-DAVN1-Replacement Parts

|   | ITEM#     | DESCRIPTION                              |
|---|-----------|--|
| A | 170-WA    | 3/32" Allen Wrench                       |
| B | CS-13002C | Cold Push Handle                         |
| C | CS-13002H | Hot Push Handle                          |
| D | 530       | Escutcheon                               |
| E | CS-49017C | Cold Repair Kit                          |
| F | CS-49017H | Hot Repair Kit                           |
| G | X491-U    | Gasket (12 Pcs/Pack)                     |
| H | X53-AS    | Lock Nut (6 Pcs/Pack)                    |
| I | X4015     | Coupling Nut (4 Pcs/Pack)                |
| J | 312-10N   | 10" Flex. Hose Connector                 |
| K | X168-B    | Brass Hex Nut (4 Pcs/Pack)               |
| L | X28-A     | Brass Washer (6 Pcs/Pack)                |
| M | X954-A    | Slip Joint Washer (10 Pcs/Pack)          |
| N | X427-WS   | Washer (2 Pcs/Pack)                      |
| O | X53-CZ    | Locknut (6 Pcs/Pack)                     |
| P | X52-S     | Washer (10 Pcs/Pack)                     |
| Q | SU-2090-A | Low Profile Spout                        |
| R | 1109      | Pop-up Drain Assembly                    |
| 1 | X103-HS   | Set Screw (6 Pcs/Pack)                   |
| 2 | X1028-Y   | Washer (2 Pcs/Pack)                      |
| 3 | 30-L      | Aerator                                  |
| 4 | 166-UB    | Adapter (For 'V' Suffix)                 |
| 5 | CS-49004  | Vandal 0.5 GPM Aerator (For 'V' Suffix). |



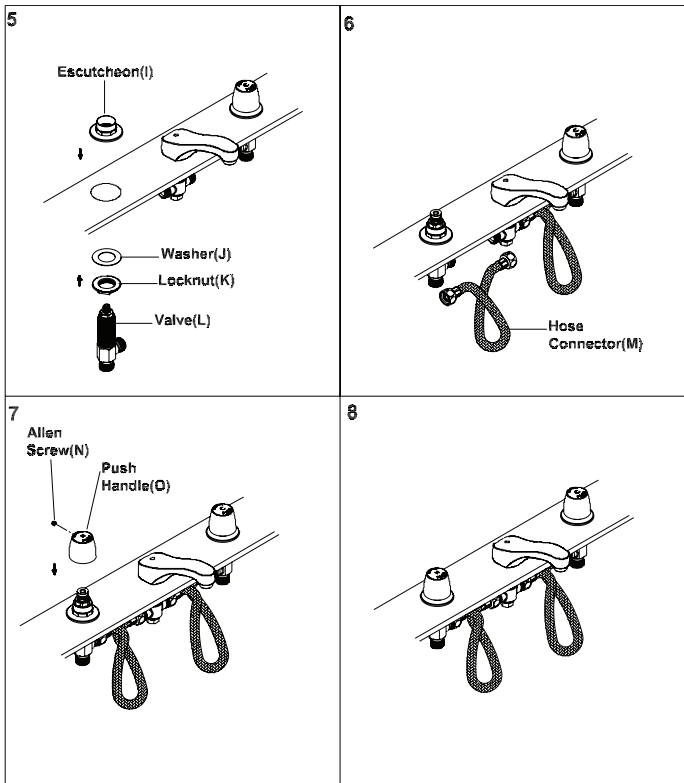
## Faucet Installation

1. Apply the plumbers putty underneath the spout (A). Slide the spout (A) through center mounting hole. Slide the mounting washer (B) through spout shank from underside of center mounting hole.
2. Thread and tighten the spout locknut (C) with the help of 1-5/32" Socket Set. Do not overtighten.
3. **For the Faucet W/Pop-Up Drain:-** Slide the connector (E) through spout shank. Ensure the washer (D) is placed inside the connector (E). Slide the cone washer (F) with the bigger end facing down through the spout shank. Slide the brass washer (G) through spout shank. Thread the locknut (H) to the spout. **For the Faucet Less Pop-up Drain:-** Ensure washer (D) is placed inside the connector (E). Thread the connector (E) to the spout shank.
4. Remove excess plumbers putty from the mounting surface.



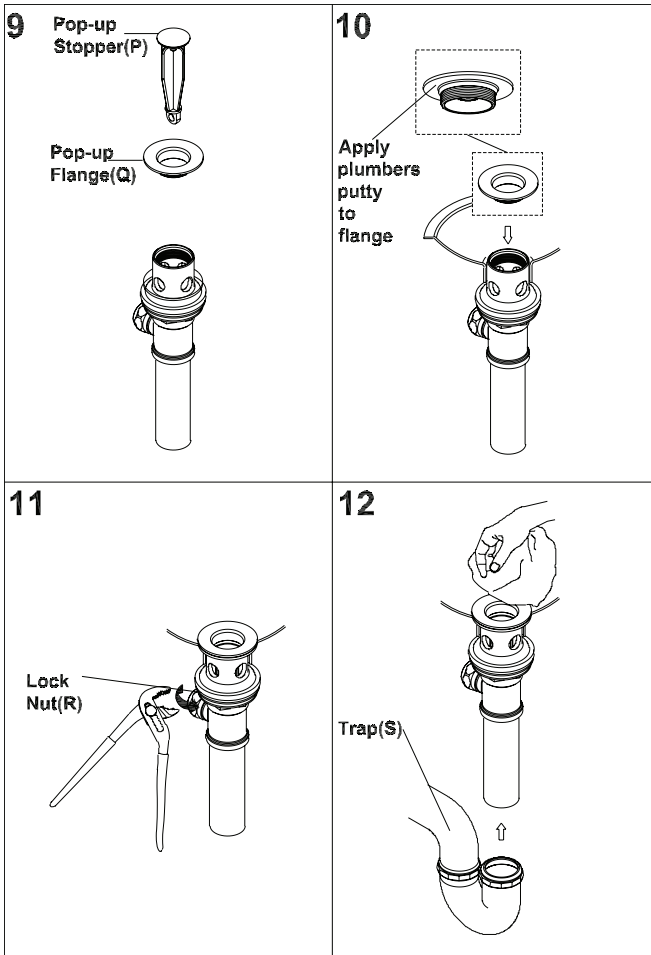
## Faucet Installation

5. Place the valve escutcheon (I) from the top. Apply the plumbers putty underneath of the escutcheon (I). The hot side valve should have 'Hot' marking and the cold side should have 'Cold' marking. Place the cold side valve (L) with washers (J) and locknut (K) from underneath sink. Thread the escutcheon (I) on the valve (L). Adjust the valve to proper height. Make sure the valve outlet faces toward the spout. Tighten the locknut (K) to secure the valve to the mounting surface. Install the hot side valve, escutcheon in the same manner.
6. Connect hose connectors (M) from hot and cold side valve to the connector (E).
7. Install the hot and cold side push handles (O) on the valve with the help of tightening allen screw (N).
8. Connect the valves to inlet supply lines. Connect the supply stops to the inlet supply lines (left is hot water supply and right is cold water supply). Make sure inlet supply lines are securely tighten. Do not overtighten. Turn on supply stops.



## Pop-up Drain Installation

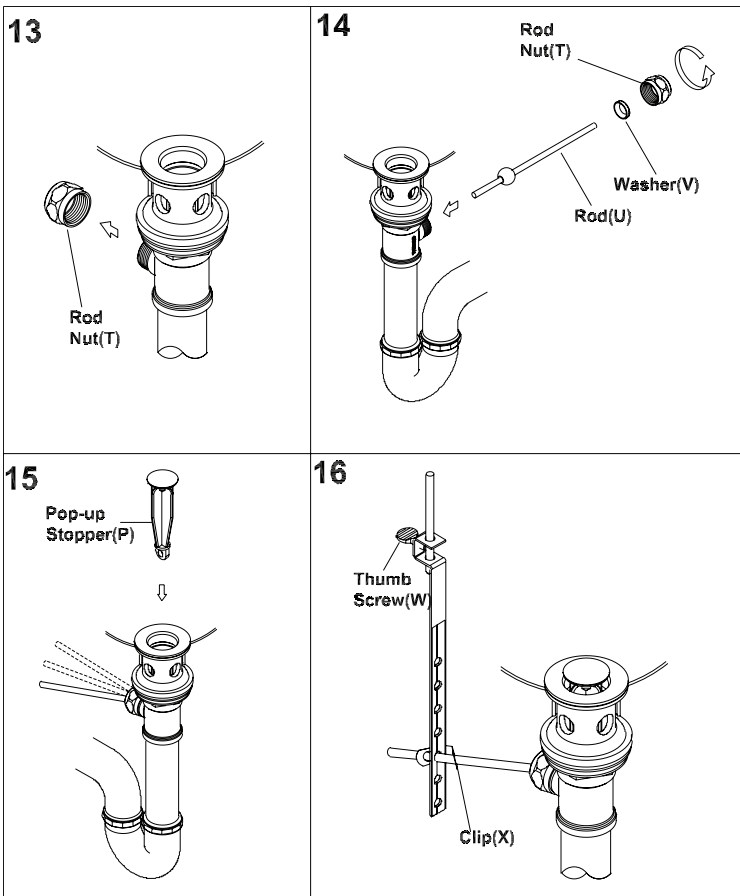
9. Remove the pop-up stopper (P) and pop-up flange (Q) from the pop-up assembly.
10. Apply adequate amount of plumbers putty underside of pop-up flange (Q). Then insert pop-up drain assembly from underside of the sink and secure the pop-up flange (Q) from the top.
11. Rotate the drain body so that horizontal rod hole faces back of the faucet. Hold the pop-up assembly in place and tighten the locknut (R).
12. Remove the excess putty. Connect the trap (S). (Check manufacturer's instructions for installation).





## Pop-up Drain Installation

13. Remove rod nut (T).
14. Ensure the washer (V) is in place. Insert rod (U). Tighten the rod nut (T).
15. Push rod down to open drain. Insert the pop-up stopper (P) carefully. Test if the pop-up stopper (P) is working properly.
16. Connect pop-up bracket to the rod using clip (X). Tighten the thumbscrew (W) to connect pop-up bracket to pop-up lift rod.

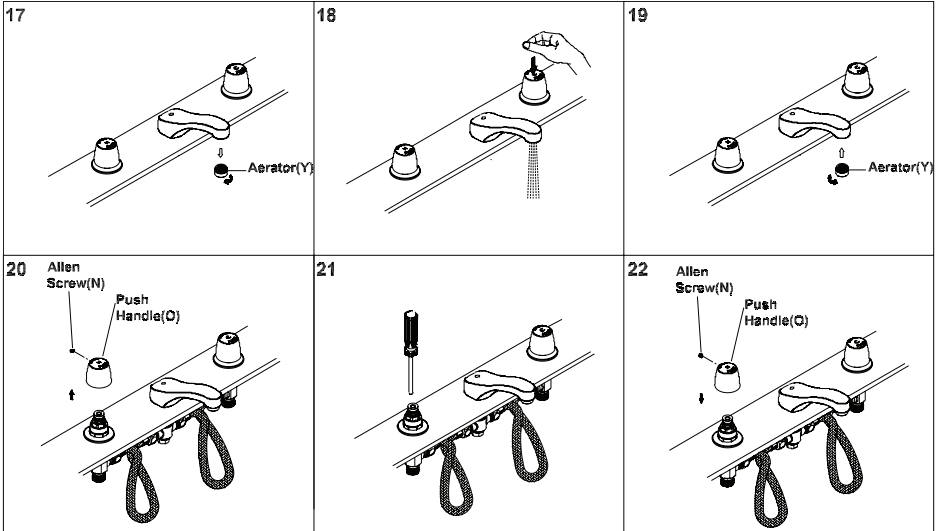


## Faucet Installation

17. Remove aerator (Y).
18. Push the handles. Flush and allow water to run at full flow.
19. Check for any leaks. Make sure all the connection are secure. Replace aerator (Y).

### Adjusting the Slow Close Timing:-

20. The slow close cartridge is factory preset at 10 seconds @ 60 PSI. Depending on the inlet water pressure and water temperature this timing can vary. If timing need to be changed, remove the handle(O) by loosening allen screw (N).
21. With the help of flat head screwdriver, loosen the screw to decrease the timing and tighten the screw to increase the timing. The timing can be adjusted from 0 to 60 seconds depending on the inlet pressure and water temperature.
22. Once the satisfactory timing has been adjusted, Install the handle(O) by tightening allen screw (N).



For more care information or trouble shooting inquiries about your Central Brass product, please see the contact information on the back page.

# Central Brass

C O M P A N Y

A Division of Pioneer Industries, Inc.

6892 Snowville Road | Brecksville, Ohio 44141  
Telephone: (800) 321-8630 | (216) 883-0220 | Fax: (800) 338-9414  
Hours: M - F, 7:30am to 5:00pm EST  
[www.centralbrass.com](http://www.centralbrass.com)