

C O M P A N Y

Brecksville, Ohio 44141

Phone: (216) 883-0220 Fax: (440) 526-5745

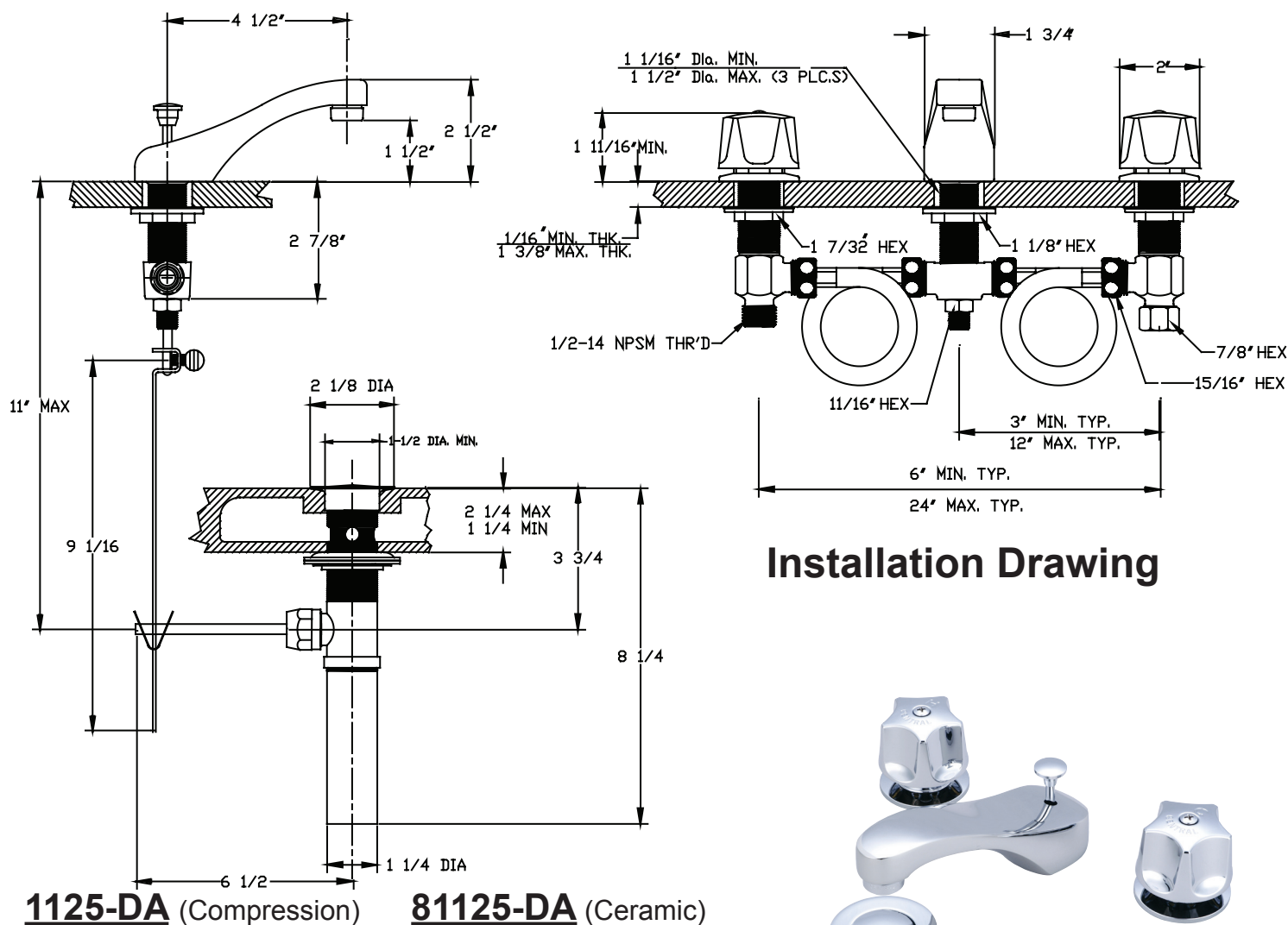
[www.CentralBrass.com](http://www.CentralBrass.com)

## MODEL NOS.

**1125-DA**

**81125-DA**

## WIDESPREAD SINK FAUCET



The widespread sink faucet is made with individual cast brass valves connected by nylon reinforced tubing. The center distance of the faucet can be adjusted from 6 to 24 inches. The spout is cast brass and has a polished copper, nickel and chrome plated finish. The stems are all brass, with a double O-Ring seal and rubber seat washer (for compression stems) or ceramic sealing discs (for ceramic units). The O-Rings and seals are rubber. The round canopy handles and the escutcheons are zinc die cast with a chrome plated finish. The spout is equipped with a water saving aerator that limits the flow rate. The pop-up drain is brass with a chrome plated finish. The stopper and guide assembly can be easily removed for cleaning.

Flow Rate: 2.0 gpm @ 60 psi

ASME A112.18.1M

ANSI/NSF 61/Section 9 Certified

01-16-09

# Central Brass

C O M P A N Y

Brecksville, Ohio 44141

Phone: (216) 883-0220 Fax: (440) 526-5745

[www.CentralBrass.com](http://www.CentralBrass.com)

MODEL NOS.

1125-DA

81125-DA

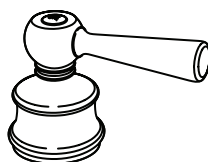
WIDESPREAD SINK FAUCET

*Handle variations available*

Prefix

10, 18, 20, 28

Villager Lever



K-512-02 (chrome)

K-512-15 (white)



Faucets with lever, wrist or elbow handles with compression or ceramic stem cartridges are ADA compliant.

Item available  
without Pop-Up Drain  
see items  
1125-A