

# Central Brass

C O M P A N Y

Brecksville, Ohio 44141

Phone: (216) 883-0220 Fax: (440) 526-5745

www.CentralBrass.com

**0805 0808 0826**  
**80808 80826**  
**TWO-VALVE**  
**BATH/SHOWER FITTING**

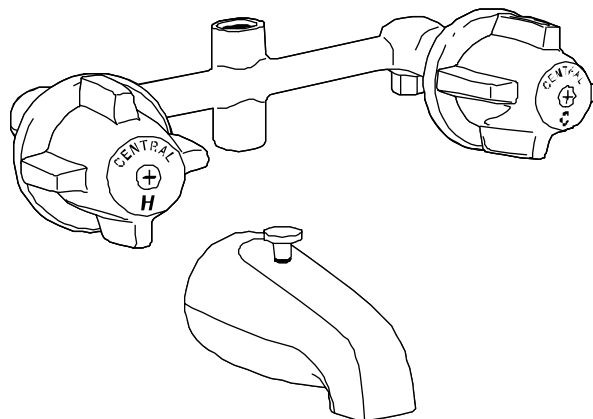
The two-valve shower fitting is made with a cast brass body with replaceable seats (for compression stems only) designed for direct sweat connections. The stem units are all brass with a reinforced rubber packing and rubber seat washer (for compression stems) or ceramic sealing discs (for ceramic units). The stem units can be easily replaced from the front of the fitting without removing the valve body. The handles and escutcheons are zinc die cast with a chrome plated finish. The shower arm is brass with a chrome plated finish, the escutcheon is stainless steel and the shower head is chrome plated plastic. The spout is brass or Zamak (Z - suffix) with a chrome plated finish.



ASME A112.18.1M

Shower Flow Rate 2.5 gpm @ 80 psi

**MODEL NOS.**  
**0805 0808 0826**  
**80808 80826**  
**TWO-VALVE**  
**BATH/SHOWER FITTING**



**8" Centers, Direct Sweat, Compression Stems, Replaceable Seats**

0805 Series	Bath Valve only
0808 Series	Bath Filler Valve with 1/2- inch IPS Spout
0826 Series	Shower Valve with Shower Head, Arm & Flange

**8" Centers, Direct Sweat, Ceramic Stem Assemblies**

80808 Series	Bath Valve with 1/2 IPS Spout
80826 Series	Shower Valve with Shower Head, Arm & Flange

# Central Brass

COMPANY

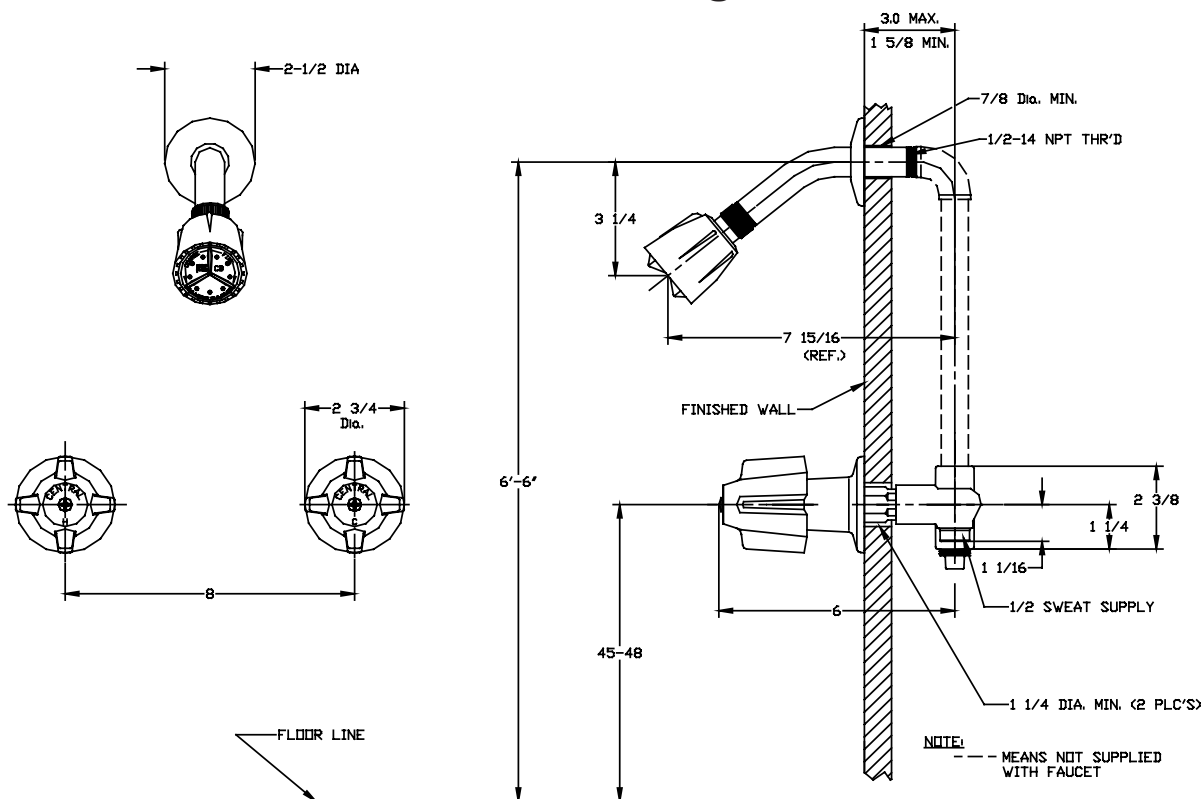
Brecksville, Ohio 44141

Phone: (216) 883-0220 Fax: (440) 526-5745

www.CentralBrass.com

**0805 0808 0826**  
**80808 80826**  
**TWO-VALVE**  
**BATH/SHOWER FITTING**

## Installation Drawings

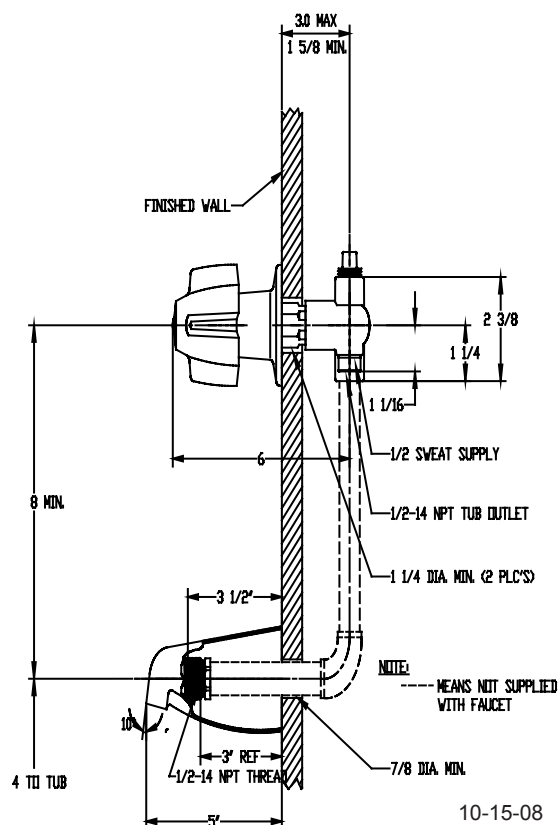
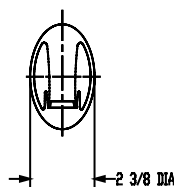
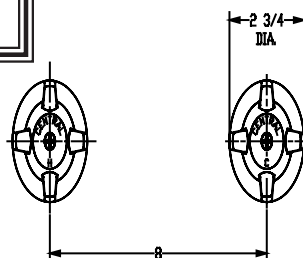


### Accessories available

Brass  
Stem Extension



G-1548-ET  
(Available Separately)  
Used for thicker wall dimensions



# Central Brass

C O M P A N Y

Brecksville, Ohio 44141

Phone: (216) 883-0220 Fax: (440) 526-5745

[www.CentralBrass.com](http://www.CentralBrass.com)

0805 0808 0826

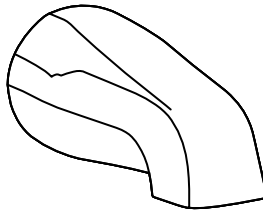
80808 80826

**TWO-VALVE**

**BATH/SHOWER FITTING**

## *Spout variations available*

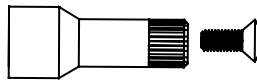
Z - Suffix  
Zamak Spout



3154-Z

## *Accessories available*

Brass  
Stem Extension



G-1548-ET  
(Available Separately)  
Used for thicker wall dimensions