



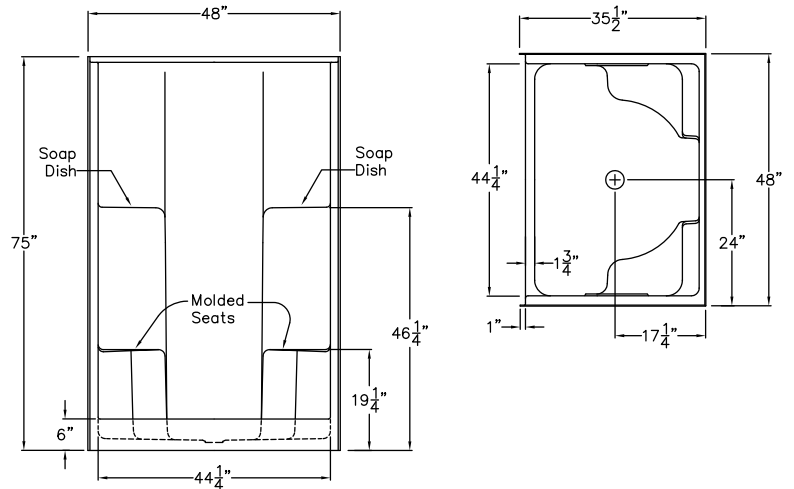
AcryIX™ APPLIED ACRYLIC

Residential Product Sheet

G 4895 SH 2S

48" x 35.5" x 75"

Enclosure: up to 44.25" x 67"



FEATURES

FINISH	PRODUCT	PIECES	WALL	SEAT
AcryIX™ Applied Acrylic	Shower	One	Smooth	Two

OPTIONS

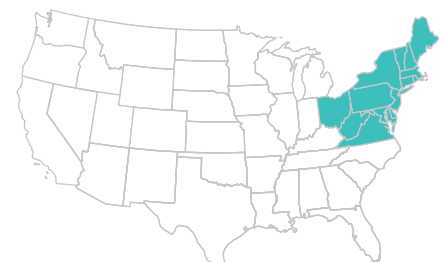
WHIRLPOOL	AcryIX™ COLORS	SOLID SURFACE COLORS	ACCESSORIES
No	White, Bone, Biscuit	Solids or Naturals	Drain

TECHNICAL INFORMATION

WT	LOAD FACTOR	HANDED BY	CODES	WARRANTY
120	1	Center Drain	ANSI 124.2, UPC	AcryIX™ - Lifetime Limited Solid Surface - 10 Year Limited

AVAILABILITY

NORTHEAST	MID / SOUTH
<input checked="" type="checkbox"/> Standard	<input type="checkbox"/> Standard



CUSTOMER SERVICE 800.443.7269

435 Industrial Road | Savannah, TN 38372 | Fax 731.925.4290 | www.praxiscompanies.com

Rev. 042017