

SRE & SR2200 MOUNTED SPHERICAL ROLLER BEARINGS



European Metric and American Standard Industrial Power Transmission Products

PTI SRE and SR2200 mounted spherical roller bearings from PTI are designed to meet industry standard "E" and "2000" series dimensions. Available for 1-7/16" - 5" shafts, SRE and SR2200 products feature ductile iron housings for added strength and HNBR triple lip seals for superior sealing & chemical resistance and an operating temperature range from -22°F through 290°F.



PRODUCT HIGHLIGHTS*

**Assembled in Charlotte, NC*

Interchangeable with Competitive Brands
SRE = "E" Dimensioned Products
SR2200 = "2000" Series Products

21 Shaft Sizes from 1-7/16" - 5"

Expansion and Non-Expansion Versions

Expansion Capability of up to 7mm (>1/4")

Setscrew Locking Collars for Easy Installation
Dual Collars Standard Above 4";
Optional for 2-7/16", 2-15/16", 3-7/16"
and 3-15/16"

HOUSINGS AVAILABLE - For a Wide Range of Applications

Pillow Blocks



SRE-PB2
2 Bolt Pillow Block
1-7/16 thru 4" Shaft Sizes



SR2-PB2
2 Bolt Pillow Block
1-7/16 thru 4" Shaft Sizes



SRE-PB4
4 Bolt Pillow Block
2-7/16 thru 5" Shaft Sizes



SR2-PB4
4 Bolt Pillow Block
2-7/16 thru 5" Shaft Sizes

Flanges

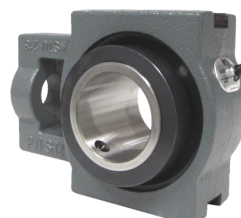


SR2-FB4
4-Bolt Flange
1-7/16 thru 4" Shaft Sizes



SR2-FC4
Piloted Flange
1-7/16 thru 4" Shaft Sizes

Wide Slot Take-Ups



SR2-WSTU
Wide Slot Take Up
2-7/16 thru 4" Shaft Sizes



PTI Corporate Headquarters Charlotte, NC - USA
24/7 Inside Sales: 704-588-1091 Toll-Free: 800-763-4434
ptiinfo@ptintl.com

www.ptintl.com

SRE & SR2200 SPHERICAL MOUNTED ROLLER BEARINGS

KEY FEATURES

Ductile Iron Housings = Similar to Cast Steel at a Fraction of the Cost

Tensile Strength = 72,500 PSI (Cast Iron = 30,000 PSI)

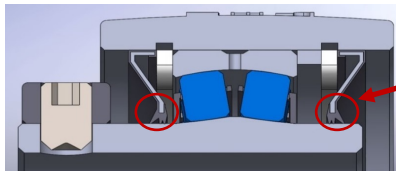
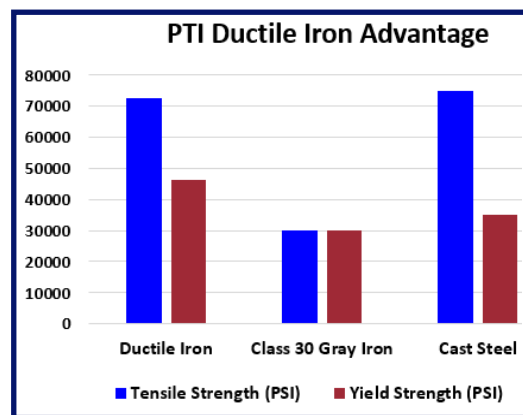
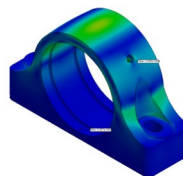
Yield Strength = 46,400 PSI (Cast Iron = 30,000 PSI)

Designed Using FEA Analysis

Most Rugged, Heaviest Housings in the Industry

Solid Base Design for Added Strength (see comparison below)

Elongated Bolt Holes Ensure Interchangeability with All Major Competitive Brands



Standard "R3" Triple Lip HNBR Seals

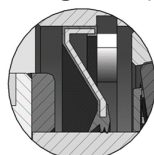
Excellent Protection Against Contamination

Operating Temp. = -22°F to +290°F | Excellent Abrasion, Chemical and Ozone Resistance

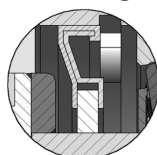
SEALS AND END COVERS*

* HNBR Triple Lip Seals are Standard

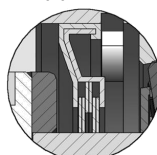
Teflon and Steel Labyrinth Seals Are Available for High Temperature or High Speed Applications



R3*
HNBR Triple Lip
-22F—+290F

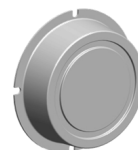


TL
Teflon Labyrinth
-100F—+400F



SL
Steel Labyrinth
-100F—+400F

Open and Closed End Covers Are Available for Added Safety and Sealing



EC
Closed End Cover
Bolts On to Housings



OEC
Open End Cover
Bolts On to Housings

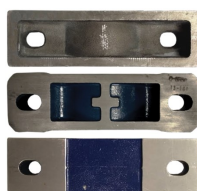
COMPETITIVE INTERCHANGES

Manufacturer	"E" Series	"2000" Series
PTI	SRE	SR2200
Hub City	KPBE	KPB
Jones	JE	JA
Link-Belt	EPB22400	PB22400
Moline	291..., 292...	191..., 192...
Rex	ZEP	ZA
Sealmaster	USRB...E	USRB
SKF	SYE	SYR
Timken/OM	QAP/QA AP	QAPL/QA PL

HOUSING FOOTPRINT COMPARISON



PTI (left) vs. Competitors



NOMENCLATURE

Nomenclature Example - SRE-PB2-215R3XP-DC

- Bearing Series**
SR2 = SR2200 Series
SRE = SRE Series
- Housing Style**
PB2 = 2-Bolt Pillow Block
PB4 = 4-Bolt Pillow Block
FB4 = 4-Bolt Flange
FC = Piloted Flange
WSTU = Wide-Slot Take-Up
- Shaft Size**
2 = 2"
15 = 15/16"
215 = 2-15/16"
- Seal Type**
R3 = Rubbing Seal, Triple Lip
TL = Teflon Labyrinth
SL = Steel Labyrinth
- Expansion or Non-Expansion**
XP = Expansion
NE = Non-Expansion

SRE-PB2- 215 R3XP- DC - Dual Collar (Standard Above 4")