

BUTTERFLY HANDLE BALL VALVE

• BRASS • 600WOG • FULL PORT

1/2" - 3/4" Sizes Gas Approved

ISO 9002 Manufacturer
FEATURES1/4-3/4" 600 PSI non-shock cold water, gas, oil
- 150 PSI saturated steam

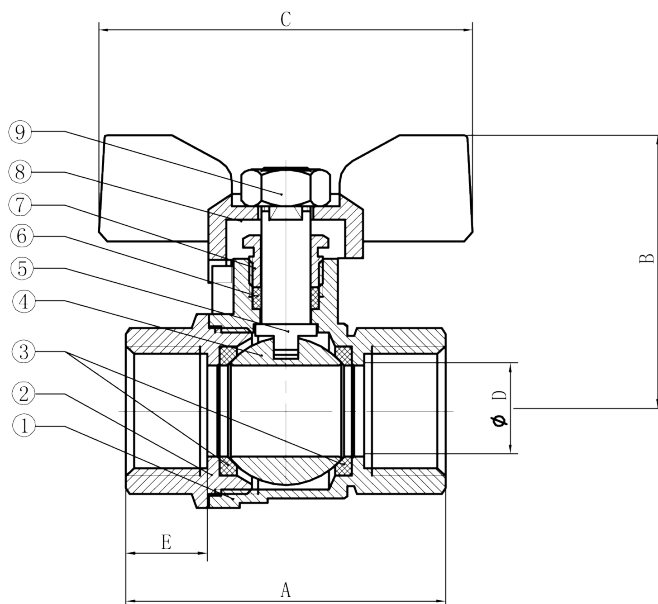
Made in China

- Suitable for full range of liquids and gases
- Minimal pressure drop due to large full size ports
- Bottom loaded, pressure retaining stem
- Pressure rated for 1/4"-3/4" at 600psi (42 bars) and 150 WSP (10.34 bars) saturated steam. Virgin PTFE stem packing seal, thrust washer and seats
- Fast 1/4 turn open or close operation
- Low operating torque
- Adjustable stem packing gland
- Maximum operating temperature: 302°F (150° C)

- Minimum operating temperature: -22°F (-30°C)
- Each valve individually tested
- Forged Brass - for more strength
- Threaded ends to ANSI B1.20.1
- Hard chromium plated solid ball
- Bottom entry, blow-out proof stem
- Deeper threads - for better connections
- Not Lead Free



| Part# | Size NPT | A | B | C | D | E | Weight | Box/Case | List Price |
|----------|-------------|-------|-------|-------|-------|-------|--------|----------|------------|
| 940-171T | 1/4" | 1.75 | 1.488 | 1.831 | 0.315 | 0.457 | 0.342 | 70/140 | 11.54 |
| 940-172T | 3/8" | 1.756 | 1.488 | 1.831 | 0.394 | 0.457 | 0.31 | 70/140 | 11.38 |
| 940-173T | 1/2" | 2.047 | 1.756 | 2.394 | 0.583 | 0.520 | 0.44 | 50/100 | 13.34 |
| 940-174T | 3/4" | 2.362 | 1.921 | 2.394 | 0.748 | 0.563 | 0.68 | 30/60 | 20.30 |



| POS | Components | Materials |
|-----|--------------|-----------|
| 1 | Body | C37700 |
| 2 | End Cap | C37700 |
| 3 | Ball Seat | PTFE |
| 4 | Ball | C37700 |
| 5 | Stem | C37700 |
| 6 | Stem Packing | PTFE |
| 7 | Packing Nut | C37700 |
| 8 | Lever Handle | ZL102 |
| 9 | Stem Nut | A570 |

Steel Tee handle option available
with extended delivery (1/4" - 4")

• Not Lead Free AB1953 Compliant