



Catalog Number 10074
UPC Number 60198610074
Description Vinyl Insulated Ring Terminals
 12-10 AWG



Features

- Color Coded insulation for easy identification
- Manufactured from high strength copper alloy
- Electro-tin plated for corrosion resistance
- Easy entry expanded insulation eliminates strand “Hang Up”, increases the crimping rates and the reliability of the termination
- Wire range stamped on the surface for easy interpretation
- Butted seams prevent splitting under maximum pressure
- Serrated barrel & flared position of sleeves provide excellent contact & mechanical stress relief at insulation & barrel junction
- Packed in Zip Lock plastic bags with punched hole for pegboard hanging

General

Insulation Type Vinyl
 Material Copper
 Finish Electro-tin plated
 Color Yellow
 Wire Range 12-10 AWG
 Stud Size 9/16

Dimension Information

L Inches (mm) 2.177
 W Inches (mm) 1.26
 D Inches (mm) 0.248
 d1 Inches (mm) 0.134
 d2 Inches (mm) 0.591
 E Inches (mm) 0.555
 F Inches (mm) 0.992
 T Inches (mm) 0.039

Specifications

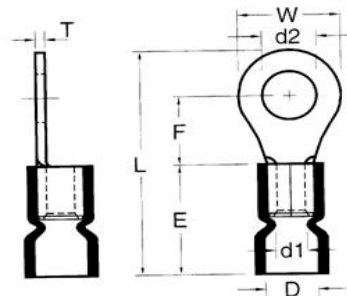
Temperature Rating 105°C
 Voltage Rating 600 V
 Flammability Rating UL94V-O
 Amp Rating 12 AWG 35 Amps
 10 AWG 50 Amps

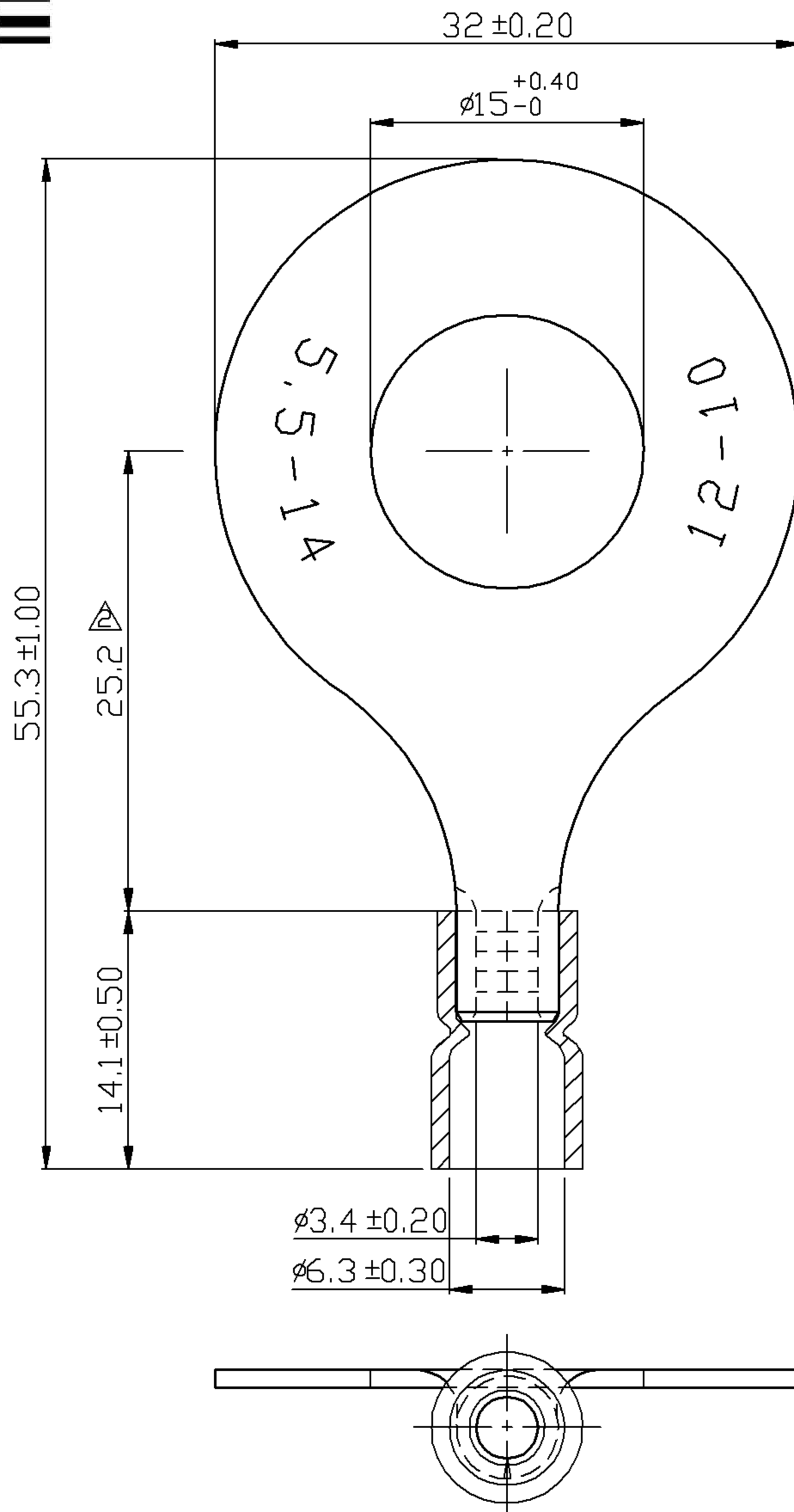
Packaging

Bag Qty 100
 Master Bag Qty 1000

Certifications

UL Yes
 cUL Yes
 RoHS Yes





REV	DESCRIPTION	DATE
△	RDK-97048	2008/03/12
△	RDK-97127	2008/08/15
△	RDK-98020	2009/08/21

NOTE :

1. MAXIMUM ELECTRIC CURRENT :

A.W.G.	12	10
AMP.	35	50
2. MAXIMUM ELECTRICAL RATING : 105°C 600 VOLTS MAX.
3. INSULATION MATERIAL : VINYL
4. INSULATION COLOR : YELLOW
5. TERMINAL MATERIAL : COPPER
6. WIRE RANGE : 12-10 A.W.G. ($4-6 \text{ mm}^2$)
7. TERMINAL SURFACE TREATMENT : TIN PLATED
8. TERMINAL THICKNESS : 1.0 mm

△ Tolerance Unless Otherwise Specified			
0 >	mm ±	ANGLE	
>	mm ±	0° >	° REF ±
>	mm ±	° >	° ±
>	mm ±	° >	° ±

NAME	VINYL-INSULATED (EASY ENTRY) RING TERMINALS				UNIT	mm	
PART NO.	10074	MATERIAL	-----	APPROVE			
NUMBER		SCALE	SHEET	PAGE	CHECKED		
DATE	2008/03/11	2/1	1-3	10F2	DRAWN		

Morris Products Inc.
53 Carey Rd. Queensbury, NY 12804