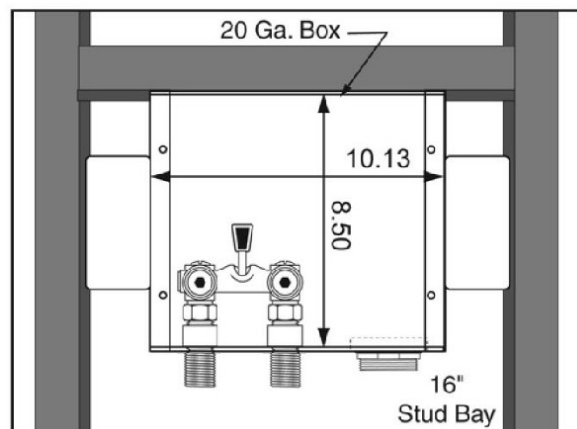


SPECIFICATION SUBMITTAL SHEET



RIGHT DRAIN GALVANIZED WMOB, Single Lever Valve With GFCI Receptacle



Specification:

Furnish and install right drain galvanized washing machine outlet box with single lever valve and GFCI receptacle. Unit shall be Guy Gray product code as manufactured by IPS Corporation.

Box Material:

20 gauge Box and 20 gauge faceplate
G90 Hot Dipped Galvanized Steel (unpainted)

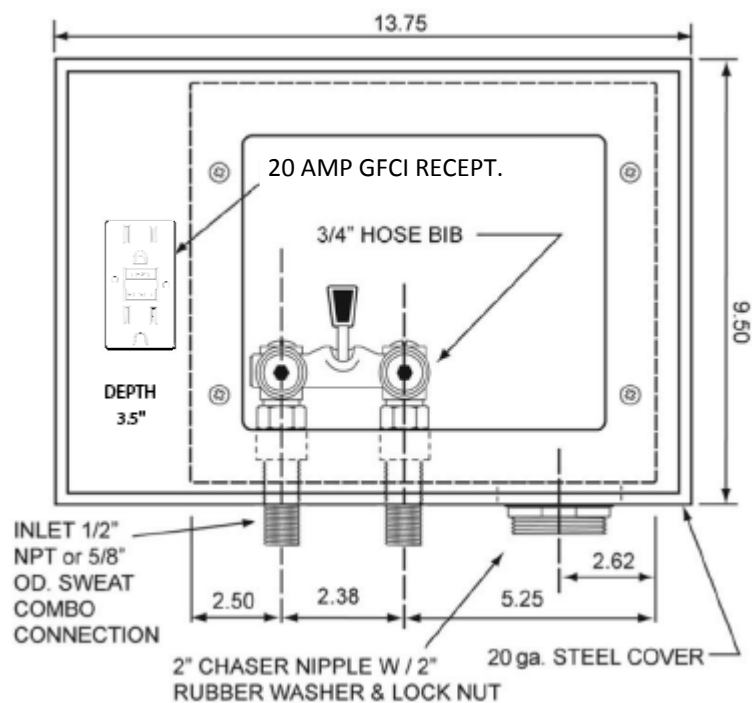
Valve & Drain Options:

Single Lever Valve with 1/2" MIP/Sweat Connection.
2" Threaded Drain. Valves comply with
ASME A112.18.1

Ground Fault Circuit Interrupter (GFCI)

Receptacle:

UL/CSA Listed
Rated: 20A, 20A Feed-Through, 125V



Product Code #	Product Description	Model Number	Units/Case
82668	1/2" MIP/Sweat Conx. Single Lever Valve, 2" Threaded Drain Fitting, w/GFCI	WBE200GF	6

