

Single Pole (One location) or 3-Way (Multi-location)
Push On/Off Dimmer
120VAC, 60Hz
Cat. No. 6684, 600W (Lighted)
INSTALLATION INSTRUCTIONS

TRIMATRON™

WARNINGS:

- To be installed and/or used in accordance with appropriate electrical codes and regulations.
- If you are unsure about any part of these instructions, consult a qualified electrician.
- To avoid overheating and possible damage to this device and other equipment, do not install to control a receptacle, fluorescent lighting, a motor- or a transformer-operated appliance.

CAUTIONS:

- Use only one (1) dimmer in a 3- or 4-way circuit. The switch(es) will turn the light on at the brightness level selected at the dimmer.
- Use with incandescent or 120V halogen fixtures only.
- Disconnect power at circuit breaker or fuse when servicing fixture.
- Use this device only with copper or copper clad wire. With aluminum wire use only devices marked CO/ALR or CU/AL.

Tools needed to install your Dimmer:

Slotted/Philips Screwdriver Electrical Tape
Pliers Pencil
Cutters Ruler

Installing Dimmer by itself or with other devices:

If installing Dimmer in a single device application, proceed with the **INSTALLING YOUR DIMMER** section. If installing Dimmer in a multi-device application, proceed as follows:

MULTI-DEVICE APPLICATION:

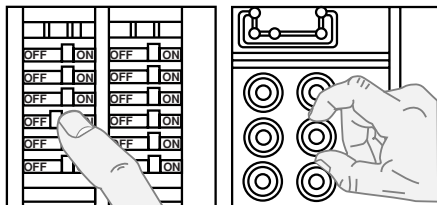
In multi-dimmer installations, the reduction of the dimmer's capacity is required. Refer to the chart for maximum load per dimmer.

| MAXIMUM LOAD PER DIMMER FOR MULTI-DEVICE | | | |
|--|--------|-------------|---------------------|
| Cat. No. | Single | Two Devices | More than 2 Devices |
| 6684 | 600W | 500W | 400W |

INSTALLING YOUR DIMMER

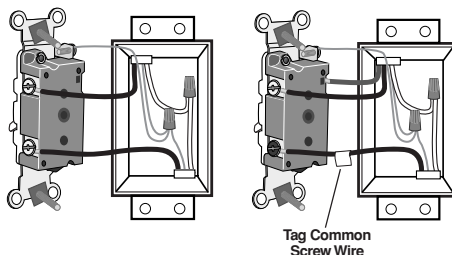
NOTE: Use check boxes ☒ when Steps are completed.

Step 1 **WARNING:** To avoid fire, shock, or death; **TURN OFF POWER** at circuit breaker or fuse and test that power is off before wiring!



Step 2 **Removing existing switch:** Remove existing wallplate and switch mounting screws. Carefully pull switch from wall box. **DO NOT** remove wires attached to the switch at this time.

Step 3 **Identifying your wiring application (most common):**
NOTE: If the wiring in the wall box does not resemble any of these configurations, consult a qualified electrician.

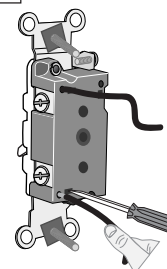


Single-Pole: Look at the back of your switch. If there are 2 wires connected to two screw terminals (not including a green or bare copper wire used for grounding), you have a Single-Pole switch.

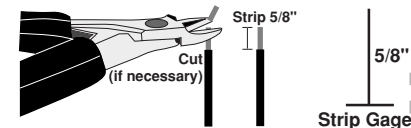
3-Way: Look at the back of your switch. If there are 3 wires connected to three screw terminals (not including a green or bare copper wire used for grounding), you have a 3-Way switch. Note that one of the screw terminals will usually be a different color (black) or labeled Common. Tag that wire with electrical tape to identify.

Step 4 **Disconnecting switch wires and preparing wires:**

- Disconnect wires from screw terminals or Quickwire™ slots (shown).
- Pull off pre-cut insulation from Dimmer leads.
- Make sure that the ends of the wires from the wall box are **straight (cut if necessary)**.
- Remove 5/8" (1.6 cm) of insulation from each wire in the wall box (shown).
- For Single-Pole Application, go to Step 5A.**
- For 3-Way Application, go to Step 5B.**

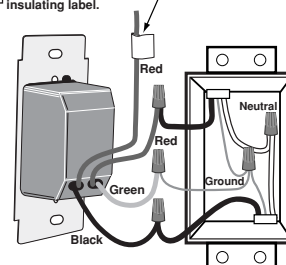


Press in slot and pull out wire



Step 5a **Single-Pole Wiring Application:**

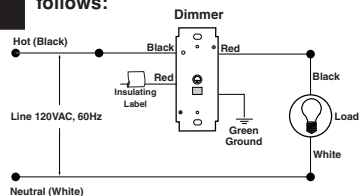
This wire is used in 3-way installations only. For single pole installations, do not remove this insulating label.



Connect wires per WIRING DIAGRAM as follows: Screw wire nuts on clockwise making sure no bare conductors show below the wire connectors. Secure each connector with electrical tape.



Step 5a Connect wires per WIRING DIAGRAM follows:

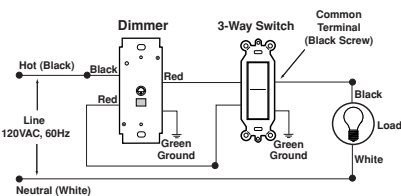
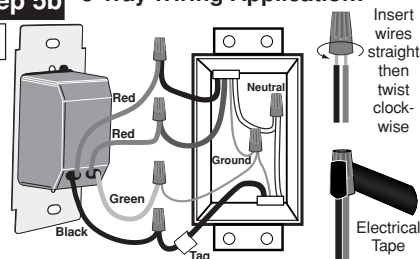


- Green dimmer Ground lead to Green or bare copper wire in wall box.
- Black dimmer lead to any wall box wire removed from old switch.
- Red dimmer lead without insulating label to remaining wall box wire.
- Remaining Red dimmer lead should have Red insulation label affixed.

Proceed to Step 6.

NOTE: If insulating label is not affixed to Red lead, use a small wire nut or electrical tape to cap off. **Proceed to Step 6.**

Step 5b 3-Way Wiring Application:

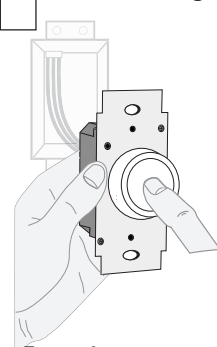


Connect wires per WIRING DIAGRAM as follows:

- Screw wire nuts on clockwise making sure no bare conductors show below the wire connectors. Secure each connector with electrical tape.
- Green dimmer Ground lead to Green or bare copper wire in wall box.
 - Black dimmer lead to tagged (common) wall box wire identified when removing old switch.

- Remove Red insulating label from Red lead.
- Any Red dimmer lead to any of the remaining wall box wires.
- Remaining Red dimmer lead to remaining wall box wire.

Step 6 Testing your Dimmer prior to mounting in wall box:

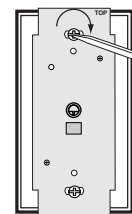


For testing, press knob onto shaft.

- Restore power at circuit breaker or fuse.
- Carefully holding Dimmer as shown, rotate knob clockwise to highest position. Lights should turn ON to brightest level. If lights do not turn ON, press knob once. Lights should turn ON to brightest level.

If lights do not turn ON, refer to the TROUBLESHOOTING section.

Step 7 Dimmer Mounting: TURN OFF POWER AT CIRCUIT BREAKER OR FUSE.



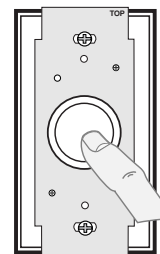
Remove knob. Installation may now be completed by carefully positioning all wires to provide room in wall box for dimmer. Mount dimmer into box with mounting screws supplied. Attach wallplate and either the White or Ivory knob.

NOTE: A toggle opening wallplate must be used for proper light indicator illumination.

Step 8 Restore Power: Restore power at circuit breaker or fuse. Installation is complete.

OPERATION

NOTE: The indicator light will illuminate when the dimmer is in the OFF position to facilitate access in the dark.



ON: Press knob. The lights will turn ON (Indicator light OFF) at brightness set on Dimmer by knob rotation.

OFF: Press knob. The lights will turn OFF (Indicator light ON).

BRIGHTEN: Turn knob clockwise.

DIM: Turn knob counter-clockwise.

TROUBLESHOOTING

- Lights Flickering
 - Lamp has a bad connection.
 - Wires not secured firmly with wire connectors.
- Light does not turn ON and ON/OFF LED does not turn ON
 - Circuit breaker or fuse has tripped.
 - Lamp is burned out.
 - Lamp Neutral connection is not wired.

NOTE: If further information is needed in identifying the HOT wire in a 3-Way application, go to *Leviton's website at www.leviton.com.*

For non-standard wiring applications, refer to Wire Nut and Connector Size Chart

WIRE CONNECTOR / # OF COND. COMBINATION CHART

- 1- #12 w/ 1 to 3 #14, #16 or #18
- 2- #12 w/ 1 or 2 #16 or #18
- 1- #14 w/ 1 to 4 #16 or #18
- 2- #14 w/ 1 to 3 #16 or #18

LIMITED 2 YEAR WARRANTY AND EXCLUSIONS

Leviton warrants to the original consumer purchaser and not for the benefit of anyone else that this product at the time of its sale by Leviton is free of defects in materials and workmanship under normal and proper use for two years from the purchase date. Leviton's only obligation is to correct such defects by repair or replacement, at its option, if within such two year period the product is returned prepaid, with proof of purchase date, and a description of the problem to **Leviton Manufacturing Co., Inc., Attn: Quality Assurance Department, 59-25 Little Neck Parkway, Little Neck, New York 11362-2591**. This warranty excludes and there is disclaimed liability for labor for removal of this product or reinstallation. This warranty is void if this product is installed improperly or in an improper environment, overloaded, misused, opened, abused, or altered in any manner, or is not used under normal operating conditions or not in accordance with any labels or instructions. There are no other or implied warranties of any kind, including merchantability and fitness for a particular purpose, but if any implied warranty is required by the applicable jurisdiction, the duration of any such implied warranty, including merchantability and fitness for a particular purpose, is limited to two years. Leviton is not liable for incidental, indirect, special, or consequential damages, including without limitation, damage to, or loss of use of, any equipment, lost sales or profits or delay or failure to perform this warranty obligation. The remedies provided herein are the exclusive remedies under this warranty, whether based on contract, tort or otherwise.

DI-00X-06684-02A

WEB VERSION