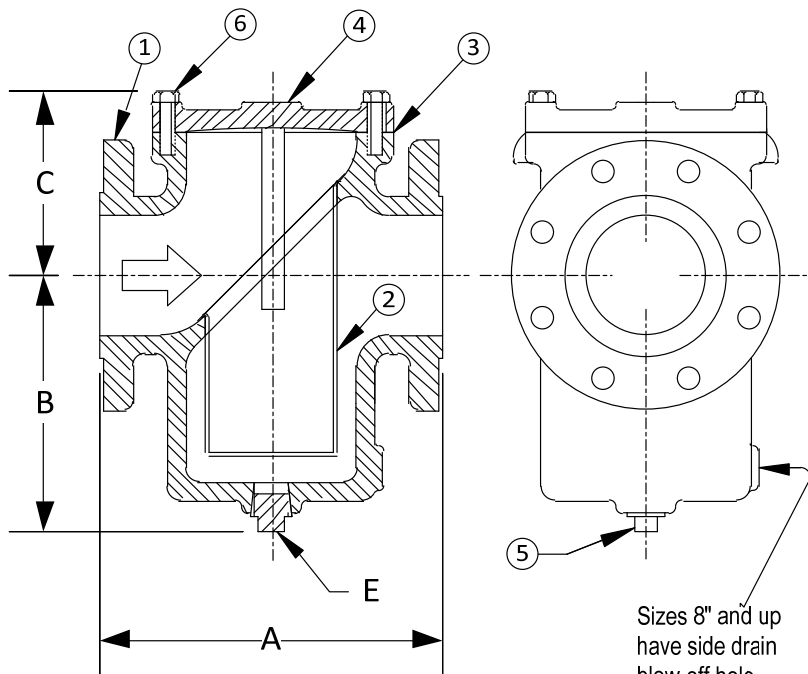


DRAWING NO.
AL 73189



BODY PRESSURE & TEMPERATURE RATINGS – NON SHOCK		
NOM. RATING	MEDIA	2" to 6"
250# (EX. HEAVY FLANGE)	STEAM	250 PSI @ 450°F
	W.O.G.	500 PSI @ 150°F

PARTS LIST		
ITEM	DESCRIPTION	MATERIAL
1	BODY	CAST IRON (ASTM A 126, CLASS B)
2	BASKET	STAINLESS STEEL (304)
3	GASKET	COMPOSITION
4	COVER	CAST IRON (ASTM A 126, CLASS B)
5	PIPE PLUG	MALLEABLE IRON
6	HEX HEAD CAP SCREW	STEEL

Product Number†	SIZE	DIMENSIONS (in)				COVER		WEIGHT (lbs)
		A	B	C	E	No. of Bolts	Size of Bolts	
23RFS-CI125P34-FB	2	8	6	3-1/2	3/4	4	1/2-13 x 1	23
21/23RFS-CI125P34-FB	2-1/2	8-1/4	7	3-3/4	3/4	6	1/2-13 x 1-1/2	33
33RFS-CI125P34-FB	3	9-3/4	8-1/4	4-1/4	3/4	6	1/2-13 x 1-1/2	44
43RFS-CI125P34-FB	4	11-1/2	9	4-3/4	1	6	1/2-13 x 1-1/2	67
53RFS-CI125P34-FB	5	13-1/8	9-3/4	6	1	10	3/4-10 x 2-1/4	88
63RFS-CI125P34-FB	6	14-3/4	10-1/2	6-1/4	1	10	3/4-10 x 2-1/4	12

†See "Style GFV Product Number Configuration" for additional options.

Face to face values tolerance in compliance with ASME B16.1.

STANDARD SCREENS SUPPLIED

SIZE	SCREEN PERFORATION			
	FOR LIQUID	OPEN AREA	FOR STEAM	OPEN AREA
in	in		in	
2 to 3	1/8	43%	1/16	30%
4 to 6	1/8	43%	1/8	43%

Standard screens supplied are for **liquid service**, unless otherwise specified.

Options: Other perforations, meshes, and screen materials are available.

KECKLEY

3400 CLEVELAND

SKOKIE ILLINOIS

DRAWING NO.
AL 73189

DIMENSIONAL ASSEMBLY

PART NO.

250# Flange Style GFV Cast Iron

SCALE: NTS

Basket Strainer w/ 304 ss screen

DATE: 09/21/2020

MAT'L:

REQ. ---

DR. BY DSF